

HAWAII MARINE

Voluntary payment for delivery to MCAS housing/\$1 per four week period

VOL. 10 NO. 39

KANEHOE BAY, HAWAII, SEPT. 30, 1981

TWENTY PAGES

Pass in Review

BOOST applications solicited

WASHINGTON — Applications are now being solicited for the 1982 Broadened Opportunity For Office Selection and Training Program.

BOOST is primarily intended to provide a basic educational foundation for enlisted personnel who would otherwise be ineligible for Navy ROTC scholarship programs and entry into the U.S. Naval Academy.

The program prepares selected enlisted personnel to compete for entry into those programs.

Applicants must be U.S. citizens enlisted on active duty with at least 36 months obligated service remaining as of June 1, 1982. Prospective NROTC candidates must not have reached their 21st birthday as of March 31, 1982.

NROTC candidates with active service in the Armed Forces prior to entering the BOOST Program may be granted a waiver on a month for month basis up to 27 months. All prospective USNA candidates must not have passed their 21st birthday on July 1, 1982. Age criteria for USNA is not waivable.

Details of application procedures and eligibility are contained in BUPERSMAN 102036 and OPNAVNOTE 1500 of Aug. 21, 1981. Application deadline for the Fiscal Year 82 BOOST is Dec. 1, 1981. Applications must be forwarded to The Chief of Naval Education and Training (N-14). Candidates will be notified of selection status by letter. Selectees will be issued orders for the BOOST class convening June 1982.

Book commemorates division

HQMC, WASHINGTON — The Second Marine Division Association has announced the publication of "Second to None," a book commemorating the history and legacy of the men and accomplishments of the Second Marine Division during World War II.

To be published soon, the book will contain various stories and photos of major battles and campaigns and will feature articles on Marines of every rank and assignment.

For complete information and an order form, those interested should write: Second Marine Division Association, P.O. Box 158, Denver, PA. 17517.

U.S. Navy purchases ships

WASHINGTON — Six of the largest and fastest container ships in the U.S. Flag Merchant Fleet have been purchased by the Navy from merchant shipping companies for use by the Military Sealift Command to improve the Department of Defense strategic mobility posture.

The Naval Sea Systems Command awarded a \$207.5 million contract for six SL-7 container ships. The price includes 4,000 containers and 800 container chassis and spare parts. Included in the contract is the option to purchase two additional SL-7s.

Title of the ships will be transferred to the government following a five-day survey and a 45-day inspection. The ships are being delivered to the Military Sealift Commands at San Francisco and Elizabeth, N.J., and delivery should be completed by early November.

The 33-knot ships will provide fast logistic capability and improve the strategic sealift to quickly deploy supplies located within the United States to potential danger areas throughout the world. The ships later will be converted to full self-sustaining roll-on, roll-off vessels with sufficient cranes, booms, hatches and sideports to permit rapid loading and unloading.

After acceptance by the Navy, the SL-7s will be re-named following the Navy practice of naming dry cargo-type ships for celestial bodies and phenomena.

Airlines extend discount

WASHINGTON — Efforts to get all carriers participating in the 50 percent Reserved-seat Furlough Fare Discount Program who had set expiration dates to extend them beyond Sept. 30, 1981 have been more than successful.

All carriers have extended at least to March 31, 1982, three more carriers (American, United, and Continental) removed their expiration dates altogether, and one more carrier (Continental) decided to offer this fare on all its domestic routes.

The following is a complete listing of the 21 participating carriers, their present expiration dates and the domestic markets they cover:

Airline	Markets	Expiration date
Air Florida	All	None
Air Midwest	All	Sept. 30, 1982
Air New England	All	None
Altair	All	None
American	All	None
Aspen	All	None
Braniff	Selected	None
Continental	All	None
Delta	All	None
Eastern	All	None
Egypt	All	None
Northwest	All	May 31, 1982
Ozark	All	None
Pan Am	All	None
Piedmont	All	None
Republic	All	None
Texas Int'l	Selected	March 31, 1982
TWA	All	March 31, 1982
United	All	None
USAIR	All	None
Western	All	May 31, 1982

TWA has imposed blackout dates on the use of the 50 percent furlough fare during the upcoming holiday season. The airline will not accept reservations for the furlough fare on Dec. 17, 18, 19, 23, 24, 25, 30 and Jan. 2, 3, 4, 5, and 10. However, TWA has agreed to honor this fare on a standby basis on all these dates.

National problem plagues Americans

Fire Prevention Week Oct. 4 through 10, 1981, marks the 71st year that fire safety has been the subject of a national observance.

It all started Oct. 9, 1911 when Fire Prevention Day was inaugurated. The date was chosen because it marks the anniversary of the so-called "Great Chicago Fire of 1871" — the conflagration which killed 250 people and destroyed 17,430 buildings at a cost of \$168 million, and the fire which started people thinking in terms of fire prevention rather than only of fire fighting.

FIRE IS A national problem which kills more than 8,000 Americans annually. At least 100,000 people are injured and billions of dollars in property is destroyed. A significant factor contributing to this unfavorable trend is human failure to recognize hazards and to take adequate preventive measures. Failure to act intelligently at the outbreak of fire. Failure to take appropriate actions to limit dangers.

A large percentage of the dead were children, elderly persons and invalids who had been left alone "for just a few minutes."

The chief causes of fires are: smoking; heating and cooking equipment; electrical wiring; children playing with matches; open flames and sparks; flammable liquids; suspected arson; and spontaneous ignition.

FIRE SAFETY and prevention are not solely the responsibility of the fire inspectors or safety inspectors. They are jobs that must be performed every day by everyone. In most cases, when the fire alarm goes off, someone has failed to do his or her job of fire prevention.

During the week all Federal Fire Stations will hold open houses. People are encouraged to visit the fire station within their areas. Get to know your firefighters and give them your support. Practice fire prevention year-round.

Tours of Air Station fire station can be arranged by contacting Bob Dircks at 257-2022 or 257-2080.

Lifesaving fire prevention tips
 • Be sure your cigarette is out. Matches, too. Never leave matches and lighters within the reach of children.

• Don't run cords under rugs or over radiators where they may get damaged. Replace a cord if it is frayed.

• Never leave small children or invalids alone in the house. Not even for a few minutes.

• Have your wiring and electrical installations done by a professional.

• Store oily rags and paints in a cool place in tightly sealed metal containers.

• Never use flammable liquids for dry cleaning indoors.

• Have a fire drill in your home to be sure everyone knows what to do in case of fire. Designate a specific meeting place outside so you will all know who's outside of the house.

• Remember: Fire extinguishers put out 97 percent of all fires on which they were used, and most large fires start as small fires. (So invest in a compact, easy-to-use fire extinguisher.) Keep it handy in your kitchen, or be prudent and buy one for your cottage, car, boat and the back bedrooms.

• Some excellent smoke, heat, and fire-detection systems are available to homeowners. Shop around and buy the one that suits your needs.

In case of fire

• If you suspect fire, alert the rest of the household. But first feel the top of the door. If it's hot, don't open it. Escape through the window.

• If you can't open the window, break it with a chair. Cover the rough edges with a blanket, sit on the window ledge with one leg hanging outside and one inside, and wait for help.

• The phone number to report a fire should be taped on or posted near every telephone. If it isn't, don't fumble around trying to find it. Get out and call from a neighbor's house.

• If you live in an apartment building, use the stairway. Don't take a chance on the elevator. If it fails, you're trapped.

• Once out, stay out. No treasure is worth risking your life.



Federal laws outline job restrictions

HQMC, WASHINGTON — Marines seeking off-duty, part-time civilian employment should make themselves aware of Federal laws and DoD regulations dealing with the subject.

Judge Advocate officials here recently highlighted these Federal laws and DoD directives in Marine Corps Order 5330.3B, Civilian Employment of Marine Corps Personnel.

"The Marine Corps is not encouraging Marines to seek off-duty civilian employment," stated judge advocate officials here. "But at the same time, the Corps recognizes that many people find it necessary to have a part-time, off-duty job to make 'ends' meet financially."

Marines can be employed in most types of occupations. According to the order, there are only three major restrictions dealing with civilian off-duty

part-time employment. The job cannot interfere with the individual's Marine Corps duties. Marines cannot hold jobs which would bring discredit on the U.S. Government or the Marine Corps, and Marines should not accept employment which could create the appearance of a conflict of interest. An example of service-discrediting activity is posing either in the nude or partially unclothed.

These are general rules Marines should follow whenever they seek off-duty employment. Marines should also keep in mind that they cannot wear a Marine Corps uniform while working at a part-time, off-duty job.

Regular Marine officers are prohibited by law from holding public office. However, serving as church or private organizational officers does not violate the law. In addition, officers cannot be

employed by someone furnishing Naval supplies or war materials to the United States. If an officer is employed by an organization selling such supplies, he or she forfeits all pay and entitlements paid by the U.S. Government.

While aboard military installations, Marines cannot represent any commercial company soliciting or selling insurance, mutual funds, and other investment plans, commodities, and services. In addition, Marines engaged in off-duty, part-time employment cannot solicit or sell to Marines junior in rank, according to the order. This applies to "activities on and off base, in or out of uniform, on or off duty and includes personal solicitation and sale of life and automobile insurance, stocks, mutual funds, real estate or other commodities."

The purpose of the Marine

Corps order is to eliminate instances where coercion, intimidation or pressure based on rank, grade or position could be used," explained officials.

However, marines who make one-time sales of property, such as homes or automobiles, are not violating the law. Also, Marines working in restaurants, service stations or department stores are not in violation of the law.

Working in off-duty civilian employment is a privilege all Marines have the opportunity to pursue. However, those who do must make sure their off-duty employment does not interfere with their Marine Corps duties, that they are not associating themselves with the Marine Corps while working for the civilian job, and that the job does not bring discredit on the Marine Corps.

For more information, see Marine Corps Order 5330.3B.

Sea rescues

Carelessness and nature endanger swimmers in high surf area



As the onset of the fall and winter storm season approaches, so does the inherent and lethal danger of swimming in high-surf areas.

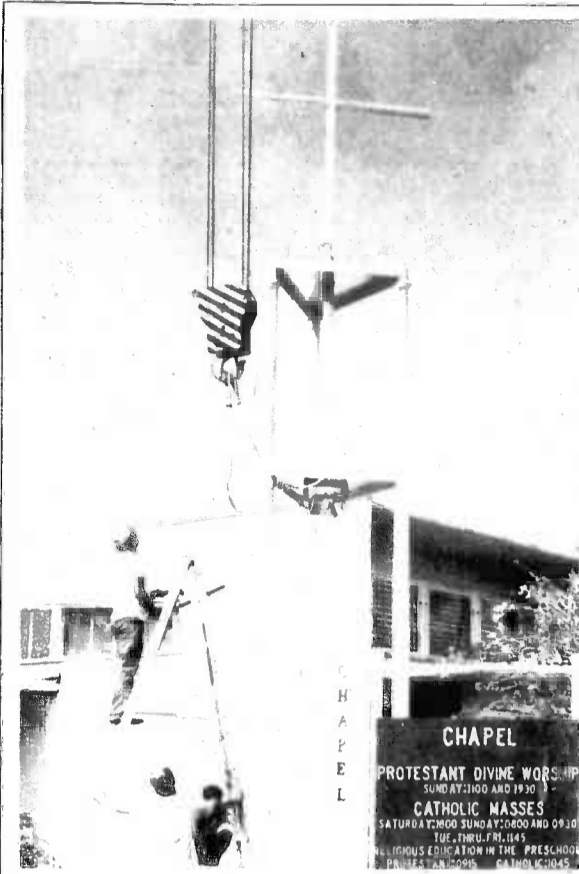
During recent weeks, a considerable increase in the number of beach rescues performed by Special Services lifeguards was reported. On Sunday, Aug. 23, four rescues were conducted in a three-hour period at Pyramid Rock Beach. Total rescues are averaging eight to 10 per month.

According to analysis made by the Station Safety Office, swimmers are consuming alcoholic beverages before entering the water; not physically qualified to cope with wave, undertow and rip tide actions; not using the "buddy system;" overexerting themselves while swimming; or are not properly equipped to swim in high-surf areas.

In regard to the latter, the Safety Office strongly recommends that no one attempt to swim in high-surf areas without swim fins.

Red flags will be flown at all Air Station beaches when water conditions are considered unsafe.

UPLIFTING EXPERIENCE — Members of the Station Operations and Maintenance Squadron's Search and Rescue team spend hours practicing the procedure and actions used to rescue persons from downed aircraft or damaged boats.



SILENT ELEVATION — Cletus Ching, Facilities Department, assisted by Herbert Sagon, also of Facilities, silences the Station Chapel's new bell (above) before it is raised in front of the Chapel (left). The 30-foot "steeple" and its bell was raised Sept. 18 and was dedicated Friday in a special ceremony.

Photos by SSgt Joe Blackburn
Colonel Charles Robinson, Commanding Officer, MCAS Kaneohe Bay, gave the bell its voice during the ceremony when he rang it for the first time. The bell will be used to announce weddings, memorial services and other special occasions.

Survey determines funds

Thursday, every student in Hawaii public schools will bring home a Federal Census Survey Card to be filled out by parents and returned to school the following day.

The annually conducted survey determines the number of federally connected pupils in the public school system for whom the state receives funds under Public Law 81-874, the Federal Impact Aid Program.

Impact aid provides partial funds to the state for educational services rendered to students whose parents live and or work on federal property.

Parents are urged to complete the survey card for each child attending public school and return it promptly. Failure to respond to the survey results in a significant loss of money for Hawaii's public schools.

Kaneohe Travel Agency, Inc.
Phone 247-2113

**FREE ROOM
LAS VEGAS SPECIAL**

**FLAMINGO HILTON HOTEL
6-23 DECEMBER 1981**

Up To 4 Nights Complimentary Standard Room With Round Trip Airfare To Las Vegas

Requirements: 1) Airline Ticket Purchase 30 Days Before Departure. 2) Age 21 Minimum

BOOKING CLOSES 19 NOVEMBER

Windward City Shopping Center Mon. thru Sat. 9-5 p.m.

SOFT CONTACTS
\$11200

Includes tax, fitting instructions, starter kit, 120 day guarantee.

HARD CONTACTS
\$8900

- GLASSES START \$39⁰⁰
- 1000 FRAMES IN STOCK

KAILUA OPTICAL
262-6191
332 ULUNU ST., IN KAILUA

Get rich slow.

\$10,295

**General Development
Average Prices**

\$1,795	\$2,395	\$3,495	\$5,395	\$6,095	\$10,295
Jan '63	Jan '66	Apr '70	June '75	Mar '78	Oct '81

Help insure your future for less than the price of a new car. We at General Development Corp. have been able to maintain a high quality operation as one of the country's largest community developers while holding prices and interest rates within an affordable range. Learn how you can own a beautiful 10,000 sq. ft. homestead in a spectacularly developed Florida community. Call us for an appointment or let us mail you a free property information kit.

U.S. PROPERTIES, INC.
Century Center, Suite 3601
946 2148

Our homestead prices are based on our cost of doing business, the fact that we are offering extended terms over a period of years, and the other factors. Such prices may not reflect the level of market prices of similar properties sold by others on other terms.

Fourth Annual

MAKAHIKI FESTIVAL

OCTOBER 3, 4, 1981, 11 A.M. to 5 P.M.

OPENING CEREMONY
Ancient Hawaiian rituals 11 a.m.

LUAU FOOD
Hawaiian food until 5 p.m., modestly priced

HAWAIIAN GAMES
Public may participate, prizes awarded

ENTERTAINMENT
John Kaminaka and his group, Keiki hula troupe, and Malau O Waimea

HULA COMPETITION
Features solo dancers, both men and women

REGULAR PARK ADMISSION
covers all Makahiiki events Adults \$4.50
Juniors 7-12 \$2.50 and kids under 7 free with parent. Reduced price for those attending both days.

923-8448 or 638-8511 for details

Waimea Falls Park

Located across from Waimea Bay on Oahu's North Shore

COME HAVE A FABULOUS HAWAIIAN DAY

OUR FIFTH LOCATION ... OPENING SOON

SPA

Health & Fitness Centers

Final Week

29500

Reg. 720⁰⁰

V.I.P. LIFETIME MEMBERSHIP

Expires October 6

COMPLETE FACILITIES

- HYDRO WHIRLPOOL
- SAUNA BATH
- PRIVATE SHOWERS
- PRIVATE LOCKERS
- PRIVATE DRESSING RM
- VANITY AREA
- \$80,000 IN FABULOUS EXERCISE EQUIPMENT
- JOGGING MACHINE
- NUTRITIONAL GUIDANCE
- SUPERVISED PROGRAMS
- WORLDWIDE FACILITIES
- STEAM ROOM
- DYNA CAM
- SUPERVISED PROGRAMS
- YOGA AND SPORTS CONDITIONING
- WATER EXERCISE CLASSES

PUNAHOU

1217 PUNAHOU ST
IN THE BANYAN TREE PLAZA

949-0026

PEARLRIDGE

PEARLRIDGE SHOPPING CTR
NEXT TO LONGS

487-5551

AINA HAINA

150 W. HIND DR
AINA HAINA PROF. BLDG

373-9836

KANEOHE

46-181 KAHUMIHA ST.
ACROSS KAREOME DATSUN

235-6461

**5th
LOCATION
COMING
SOON!**

The Hawaii Marine is an unofficial newspaper published every Wednesday by RFD Publications, Inc., 46-016 Alaloa St., Kaneohe, Hawaii 96744, in the interest of U.S. Marine Corps personnel in Hawaii. All news copy is prepared in the Joint Public Affairs Office, Marine Corps Air Station, Kaneohe Bay, Hawaii 96863, 257-2179.

HAWAII MARINE

Copy must be submitted no later than noon Thursday for the following Wednesday publication. Hawaii Marine solicits contributions of information and photographs from all Marine Corps organizations. However, it reserves the right to edit or rewrite material submitted. All advertising is arranged by the publisher, RFD Publications, Inc., telephone 235-5881. Circulation is 8,000.

Everything advertised in this publication must be made available for purchase, use or patronage without regard to race, creed, color, national origin, age or sex of the purchaser, user or patron. A confirmed violation or rejection of this policy of equal opportunities by an advertiser will result in the refusal to print advertising from that source.

At a glance

Spot Bid Sale

The Defense Property Disposal Service will hold a local spot bid sale of 180 items of government surplus at 9 a.m. Thursday. The sale will be held at Building 4 of the Pearl City Junction area, located one block Ewa of Waimano Home Road in Pearl City.

Items offered include: Van, panel, pickup, multi-stop and cargo trucks; sedans; convertibles; station wagons; motorcycles; household furniture; radios; photographic equipment; empty drums, trailers and doors.

All items may be inspected between the hours of 7:30 a.m. till noon and 12:30 till 3:30 p.m. today and from 7:30 till 9 Thursday. For more information call 455-5171.

Career change program

How to change your career, a program for those considering a job or career change, is scheduled for Saturday from 8:30 a.m. till 4:30 p.m. at the University of Hawaii at Manoa, Kuykendall 207. Russell Bruch, director of Life/Career Development, will conduct the course. Participants will learn how to identify types of people and activities they enjoy and explore the possibilities for finding work that embodies those activities and attracts those kinds of people. Cost is \$40. Sponsored by the UHM, College of Continuing Education

and Community Service. Call 948-8400 for details. Brown bag lunch recommended.

Postal hours

The Unit 3 Post Office in Building 835, also known as the Brigade Post office, will extend service hours for the Christmas holiday.

In addition to normal weekday hours of operation, the post office will be open from 8:30 a.m. to 12:30 p.m. on the following Saturdays to include finance sales (except money orders) and delivery of personal accountable mail: Nov. 14, 21, 28 and Dec. 5, 12, and 19.

The Unit 1 Post Office (Exchange) will not be open Saturdays.

Festival volunteers

The Hawaii International Film Festival, scheduled Nov. 1 till 7, is now looking for 100+ volunteers for various jobs. Some positions to start Oct. 7, but short term volunteers are needed the entire festival week with decorating, staffing the festival office and hosting the Gala Fundraiser at Sea Life Park.

A volunteer orientation meeting plus a showing of film festival clips and more information on volunteer opportunities will be held Tuesday from 7:30 till 8:45 p.m. at Burns Hall, East-West Center, 1777 East-West Road, or call the festival Hotline number 944-7178.

This event is sponsored by the East-West

Center and supported in part by a grant from the Hawaii Committee for the Humanities.

Interview course

Selling yourself — Interviewing is scheduled for Oct. 10, from 8:30 a.m. till 4:30 p.m. at the University of Hawaii at Manoa, Kuykendall 207. Russell Bruch will conduct the course. Topics include: What the job applicant should do on how to identify and approach potential employers; choosing the right job; how to conduct oneself during an oral interview; and how to write resumes. Cost is \$40. Sponsored by the UHM, College of Continuing Education and Community Service. Call 948-8400 for details.

Clinic renovations

The Navy Regional Medical Clinic at Pearl Harbor (Building 1407) is undergoing minor renovation now through Oct. 30.

The renovation will include new floor coverings, causing some departments to be temporarily relocated. The clinic will continue to provide the best care possible with the least interruptions. If problems arise which need to be brought to the clinic's attention, please direct them to the administrative office at 474-2239.

Shipping

Opportune shipping will be available for

the movement of authorized material to Okinawa during November and to California during December. Such shipping may be used by authorized personnel for shipment for privately owned items such as automobiles and boats, as defined by Brigade Order 4620.1A.

Additional information may be obtained by contacting 1st Lt. Paul Ladner at 257-2240 or 257-2641.

Childhood education course

Chaminade University will offer its introductory Montessori Early Childhood Education course in the evening for the first time as part of its Fall Accelerated Program beginning Oct. 13.

Slated in response to requests from teachers and other individuals interested in early childhood education, the course, Introduction to Montessori, will be offered at the Waiialae campus from 4:30 till 7:45 p.m. each Tuesday and Thursday evening through Dec. 15.

For more information call 735-4715.

Examination seminar

The University of Hawaii at Manoa, College of Continuing Education and Community Service will sponsor a seminar for people preparing for general intelligence examinations Oct. 17 from 9 a.m. to 4 p.m. at the UHM.

Warren Fischer, author of the book "Intensive Preparation for Civil Service Examinations," will conduct the course.

For more information call 948-6424.



PACIFIC COMMANDERS — Major General John Davis, Commanding General, Fleet Marine Force, Pacific and Commander of Marine Corps Bases Pacific, gathered his FMFPac commanders together for an annual conference here Sept. 21 through 25. (1st row left to right) MajGen James Day, CG 1stMarDiv; MajGen Calhoun J. Killeen, DepCG FMFPac; MajGen David; MajGen William Fitch, CG 1stMAW; and MajGen John Cox, CG 3dMAW. (2nd row) Brigadier General Joseph Knotts, CG

7th MAB; BrigGen Bain McClintock, CG 1stMarBde; MajGen John Phillips, CG MCH Camp Butler; BrigGen Joseph Went, CG 3dFSSG; BrigGen Edward Godfrey, AsstDepCdr 3dMarDiv; and Colonel Thomas Glidden, Chief of Staff FMFPac. (3rd row) Col John Robson, CG MCAS Futenma; Col Daryl Benstead, CG 1stFSSG; Col Speed Shea, CG MCAS Iwakuni; Col Charles Robinson, CG MCAS Kaneohe Bay; and Col James Poland, CG Camp Smith.

FAMILY CHIROPRACTIC CENTER



Dr. Lawrence J. Connors, M.A., D.C.
CHIROPRACTIC — THE NATURAL SOLUTION TO HEALTH PROBLEMS

- Headache
- Nervousness
- Neck Pain
- Shoulder-Arm Pain
- Bursitis
- Arthritis
- Backache
- "Pinched Nerves"
- Numbness in Hands or Feet

X-RAY FACILITIES
WORKER'S COMPENSATION
INSURANCE
HEALTH LECTURES
1ST & 3RD SAT 9:30 A.M.

No Charge For Consultation

KANEOHE BUSINESS & PROFESSIONAL CENTER
48-005 Kawa St., Suite 201
235-6677



LAST WEEK	THIS WEEK	TITLE	ARTIST
2	1	Tight Fittin' Jeans	Conway Twitty
29	2	Midnight Hauler	Razzy Bailey
3	3	Party Time	T.G. Sheppard
6	4	Step By Step	Eddie Rabbitt
7	5	Takin' It Easy	Lacy J. Dalton
8	6	Today All Over Again	Reba McEntire
9	7	It Don't Hurt Me Half As Bad	Ray Price
10	8	Hurricane	Leon Everette
11	9	I'll Need Someone to Hold Me When I Cry	Janie Fricke
15	10	Never Been So Loved	Charlie Pride

Listen to **BILLBOARD** Magazine's Top 40 Country Songs Saturdays and Sundays at 9 a.m. on

KDEO Country Radio AM 94

The Best of Country, from the Country, 24 hours a day.

H & R BLOCK
Income Tax Preparation
Phone **533-1690**
or **487-8531**

IT'S EVOLUTIONARY... CONTINUOUS WEAR SOFT CONTACT LENSES

- Can be worn continuously, day and night, for up to two weeks without removal.
- Superior oxygen transmission of this lens allows continuous wear—even while sleeping.
- Completely safe, comfortable and easy to wear from the start.
- 90-Day Trial Period.



COMPLETE PROFESSIONAL VISION SERVICES SPECIALIZING IN CONTACT LENSES

\$105

includes standard soft contact lenses, care kit, follow-up care by Dr. Dean and 90 DAY TRIAL PERIOD (NOT EXTENDED WEAR)

Dr. Charles Dean
Optometrist

KAILUA
139 Hekili St.
261-9735



TLA SPECIAL "ROOM & CAR PACKAGE"

Includes:

- RENTAL CAR by Trans-lease Hawaii Rent-A-Car
- DELUXE, Spacious Rooms with: Air Conditioning, FREE Color Television, Room Service Available, FREE Parking, Baby-sitter Referral, Hotel Laundromat, Swimming Pool, FREE 24-Hour Airport Shuttle Service, Kennels, CREDIT CARDS: American Express, VISA, Bank Americard, Carte Blanche, Diner's Club & MasterCard.
- Location on main bus line, convenient to all military installations.

ROOM ONLY \$380 Plus Tax per night

For Reservations & Information Call: 836-0661

WAIKIKI, MAJOR ISLAND ATTRACTIONS AND AIRPORT. *Holiday Inn* AIRPORT

Additional Conveniences:
Lei Maker's Garden Restaurant
Kalama Lounge (with nightly entertainment)

TLA Approved Room & Car \$51⁹⁵ Per Day

TELEPHONE 526-1502 WANTED TELEPHONE 526-1502

GOLD ★ SILVER ★ DIAMONDS

WE BUY GOLD, MARKED & UNMARKED. KAMAAINA METALS PAYS THE HIGHEST CASH PRICES IN TOWN—WE BUY EVERYTHING FROM CLASS RINGS TO BROKEN JEWELRY—CHAINS, WATCHES, WEDDING BANDS... DENTAL GOLD, BRACELETS, & PROPERLY MARKED BARS... WE PAY TOP CASH AT CORRECT WEIGHT! (Kamaaina Metals uses state-registered scales. Many dealers & refiners don't.)



Attention Sellers & Public: All Sellers must be 18 years of age or older with proper identification.

DIAMONDS (Any size). Extra \$5 on Diamonds One Carat and over. Especially wanted: Mine & European Cut Diamonds. Each diamond commands a unique price depending on its cut, color and clarity. KAMAAINA METALS WILL MEET OR BEAT ANY LEGITIMATE, COMPETITIVE OFFER. BRING IN YOUR DIAMONDS. MOUNTED OR LOOSE STONES.

COINS — Kamaaina Metals buys U.S. Silver Coins, Silver Dollars, U.S. Gold Coins, Foreign Gold Coins, Hawaiian Coins, & all types of Collectible Coins. Licensed numismatist on staff.

STERLING SILVER — We buy anything marked sterling .925, or .999 or Taxco. Mexico, spoons, forks, knives, plates, candlesticks, trophies, trays, frames, tea sets, etc. We also buy Silver Art Bars and Silver jewelry in any condition (new, broken or tarnished).

COLLECTIBLE WATCHES — Kamaaina Metals especially wants Rolex Watches and Gold Watches. We buy any pocket or wristwatch except Timex and digitals. Bring it in for our cash offer. (Watches need not be running, just complete.)

Office Hours: Mon-Sat 10AM-6PM Telephone 526-1502

KAMAAINA METALS

MAIN OFFICE: WE PAY THE HIGHEST CASH PRICES!
ALA MOANA 1232-A WAIMANU ST. (Near Pilkoi) AIEA NEWTOWN SQ. Suite 322 KAILUA 43 ONEAWA Suite 207 MAUI 70 CENTRAL AVE Wailuku

CHURCH'S FRIED CHICKEN SPECIALS!

• 1178 N. King St. • 2310 Kuhio Ave. • 1202 S. Beretania St. • 3405 Waiialae Ave.

<p>CHOOSE CHURCH'S FRIED CHICKEN LOVERS</p> <p>CHURCH'S BIG FOUR 2 Large Pieces Chicken & Roll 1 French Fries • 1 Ear Corn (#1) • 1 Medium Drink</p> <p>\$2.69 Expires Oct. 21, 1981</p>	<p>CHOOSE CHURCH'S FRIED CHICKEN LOVERS</p> <p>FAMILY DINNER SPECIAL 10 Large Pieces Chicken 3 Ears Corn 3 French Fries</p> <p>\$8.99 Expires Oct. 21, 1981</p>
<p>CHOOSE CHURCH'S FRIED CHICKEN LOVERS</p> <p>\$100 OFF Regular Price FAMILY ORDER (10 Pcs. Chicken) OR \$150 OFF Regular Price SUPER FAMILY ORDER (15 Pcs. Chicken)</p> <p>Expires Oct. 21, 1981</p>	<p>CHOOSE CHURCH'S FRIED CHICKEN LOVERS</p> <p>\$100 OFF Regular Price FAMILY ORDER (10 Pcs. Chicken) OR \$150 OFF Regular Price SUPER FAMILY ORDER (15 Pcs. Chicken)</p> <p>Expires Oct. 21, 1981</p>
<p>CHOOSE CHURCH'S FRIED CHICKEN LOVERS</p> <p>FREE Buy 3 Large Pieces Chicken & Roll (#4) Get 2 Large Pieces Chicken & Roll (#1) FREE!</p> <p>Expires Oct. 21, 1981</p>	<p>CHOOSE CHURCH'S FRIED CHICKEN LOVERS</p> <p>FAMILY DINNER SPECIAL 10 Large Pieces Chicken 3 Ears Corn 3 French Fries</p> <p>\$8.99 SAVE 2.07 Expires Oct. 21, 1981</p>

EDITORIAL / OPINION

Street Scoop

What do you think happens to the money taken for fines from office hours and courts-martial?



Lance Corporal Raul Lara, HMM-165: "I think the money taken for fines from office hours and courts-martial goes back to the U.S. Treasury eventually."



Sergeant L.D. McCumbers, Hq Co, 3d Mar: "As far as I know the fines from office hours and courts-martial goes back to the U.S. Treasury eventually."



Lance Corporal Lewis E. Wheelock III, Wpns Co, 3/3: "I don't really know, but I feel the fines should be used for improvements on the military bases, special services, roads, living quarters, etc."



Sergeant Jeanette Stines, H&HS: "It goes into the Recreation Funds for use in recreational activities."

EDITOR'S NOTE — According to Deputy Disbursing Officer, First Lieutenant William Andrews, the money forfeited in fines doesn't really go anywhere. "It's just that much less that is charged to the Marine Corps for salaries at the end of the year," explained 1stLt Andrews. "It just stays in one big pot."

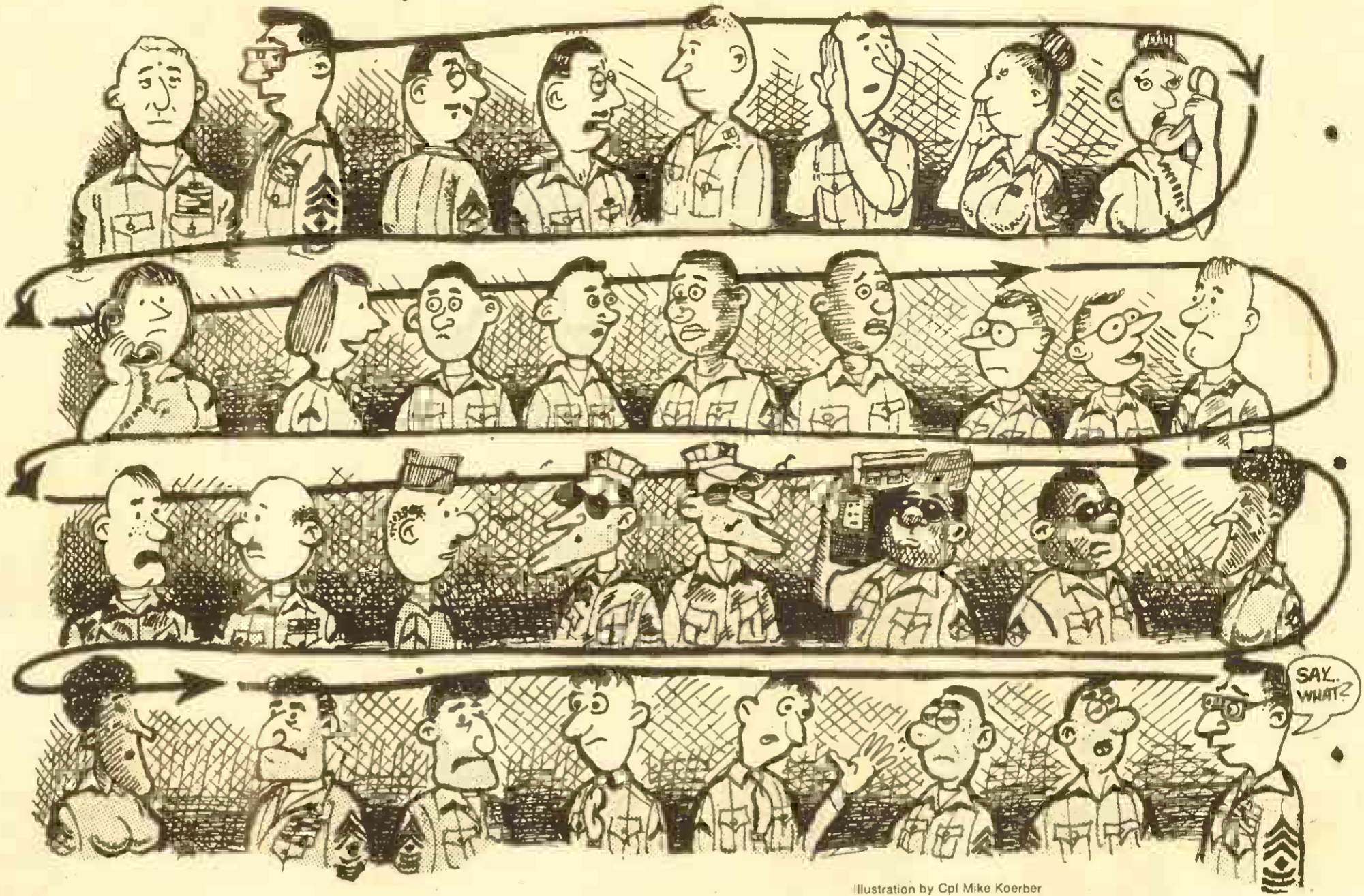


Illustration by Cpl Mike Koerber

Straight scoop transforms truth when passing "the word" along

by SSgt. C.W. Rowe

EDITOR'S NOTE — This article is reprinted from the August issue of the *Continental Marine*.

NEW ORLEANS — The word. Everybody knows what the word is. It's that guaranteed, 100 percent accurate, straight scoop that is the last "word" on any given subject. However, the only truly consistent thing about the word is that it's constantly changing.

FOR THE SIMPLEST OF EVENTS and in the shortest time periods, a bewildering number of completely different species of the "word" will appear. For example, the first sergeant passes the word that he wants a formation for the company office the next morning.

Thus starts the process. On their way to lunch, the company gunny and the admin chief are discussing the reasons for the formation.

"Whatdaya think he wants?" "Beats me. Probably to lecture us on our sins and tell us we're going to jail if we don't get our act together."

Lance Corporal McCorkle hears just enough to get his version of the word, which he passes on to Private First Class Flubert.

"I got the word on the formation, man." "Yeah. Straight scoop? What gives?" "They're gonna arrest Corporal Sin and haul him off to Leavenworth."

"Wow, man. That's some heavy stuff." Meanwhile, the training noncommis-

sioned officer is on the phone to his wife telling her to be sure he has a clean uniform for the formation in the morning. She naturally wants to know what's going on.

"HOW WOULD I KNOW? NOBODY ever tells me anything. They couldn't run this place without me, but I'm always the last to know what's going on. That's okay though, the old man knows he couldn't put up with this bunch without me. Besides, it's not long 'til I retire."

On the other side of the partition, Cpl DuBious can hear just enough to get the word. He immediately passes it on to his office crony, Cpl Sirfeit.

"I got the word, my man." "You ain't got nothin' but some more, jive talk, man."

"Straight scoop, man. Got it from old 'Long Sufferin' Jones in training. He says the old man's goin' to retire, cause he can't take no more from this bunch."

"Yeah, well maybe I'll just retire myself too."

"Right on. That's cool."

ABOUT THAT TIME, THE XO and the admin officer come back from their morning coffee break. They don't know any more than anyone else about the formation but heaven forbid that they shouldn't at least appear to know.

"What's the purpose of this august gathering?"

"As I have been given to understand the situation, it will actually involve the entire battalion. The regimental commander will be addressing us upon

our manifest destiny in regard to the currently potentially destabilizing situation in certain areas of the world where the Marine Corps may be called upon to exercise cognizance if the national interests so dictated. This discussion may be a shade too esoteric for the troops to comprehend adequately, but we can only try." (This is followed by a deep sigh.)

This is overheard by Private Baffle and Sergeant Musklewitz. Baffle looks at Musklewitz and says:

"Whadid he say?" "He said the regimental CO's gonna tell us all about goin' to war. You know, shootin' folks, blowing up things, all that good stuff."

BAFFLE ISN'T TOO CLEAR ON things, but he grasps Musklewitz's explanation just enough to get his own version of the word. And, of course, since he doesn't have too many opportunities to pass on the exclusive word, he can't wait to tell somebody.

Passing PFCs Blatherwhite and Gripalot in the hall, he assumes as commanding an air of knowledge as he can muster and loftily states:

"I know what the formation's for." Blatherwhite replies: "So, I already heard. Cpl Sin's going to jail and we're all gonna be witnesses at his court-martial."

Gripalot interjects: "No way, man, you got it all wrong. The CO's retiring cause he's goin' buggy, and we all gotta listen to him."

"You're both wrong," says Baffle smugly. "I got it from the XO himself."

We're goin' to war, and the whole regiment's gonna march out tomorrow. Straight scoop, man. That's the word."

BY THE TIME THE COMPANY office falls out in the parking lot the next morning, rumor is running rife. The word has assumed a dozen different forms, each one more outrageous and therefore more hotly defended than the next.

Bithely unaware of the repercussions of his simple statement the day before, the first sergeant falls in the tensely expectant crowd. Each version of the word has its own apostles. Some have even laid bets with believers of another version.

The usual jaw-jacking and horseplay is remarkably absent. The first sergeant is perplexed but happy. He wonders if this mob is finally beginning to shape up and act like grunts the way all Marines should.

Drawing himself up to his full height, he sounds attention. Then parade rest.

"Men, I have assembled you today to speak about a subject of vital importance to all of us."

He pauses, and the tension builds in the ranks. Everyone knows that the word is finally going to be passed, and each group is equally certain its version of the word is what will be handed down.

THE FIRST SERGEANT TAKES A deep breath and resumes.

"Now, you all know how important Savings Bonds are to the country, so I want you, each and everyone, to..." That's the word.

My Turn

Women's Weightlifting Bodybuilding

I was curious. I wanted to supplement my daily exercise routine by strengthening my upper body. Anxiety brought me to the Mini-Gym one Monday evening a few weeks ago to begin my new discipline of weightlifting. A women's free weightlifting program so widely advertised was a service to explore.

Upon arrival, I immediately began wondering how it was at all possible for approximately 70 women to use the weight apparatus with proper education and instruction from one individual, within one quick hour. It became clear shortly thereafter, such was not the case.

The majority of participants were sandwiched on the hard rubber slab, barely qualifying as a "mat." The few real mats there were accommodating only a handful of bodies. If one wasn't fortunate enough to get a space on either area, she won her position on the wooden floor!

Class commenced. Cpl Jones stood amidst the crowd and began shouting his commands. "Fifteen four-count jumping jacks." Everyone was highly urged (threatened?) to count. If not, Cpl

Jones presented himself face-to-face with the silent soul and proceeded to antagonize the individual with piercing stares and possibly a quick comment.

After the initial sets of calisthenics, the thought of what Parris Island must be like crossed my mind. It was actually a combination of such regiment and a spot on the "Howdy Doody Show" with the high pitched counts emitting from the women in unison, almost deafening. Many parents utilize such services to get away from the noise at home!

A summarized statement on the exercises is that many were not performed safely or correctly. In a few instances, Cpl Jones demanded that we bounce on our stretches. Anyone with the least bit of knowledge in healthy exercise knows that it is a cardinal sin. No one's groin muscles or ligaments will withstand such abuse, particularly if one is not in shape regarding flexibility. I made certain those near me heard me discourage such an order.

The leg-lifts were no better. Hands behind the head... wonderful for the back! Still another unprofessional and dangerous position. The sit-ups were very unimpressive: straddle position,

keeping legs straight, bringing the arms overhead and down to the feet. Straight-leg types are not beneficial to the abdominal area, and a continuation of this form will result in muscle shortening of the lower back and thighs. (Complete Guide to Figure Shaping by Charles T. Kuntzleman and Editors of Consumer Guide.)

Following 45 minutes of "Women's Weightlifting and Bodybuilding Class" the crowd was let loose on the weights. Much to my chagrin, I was unaware of any direction from Cpl Jones or anyone else. I did not stay because there clearly wasn't enough apparatus for the number of participants and no apparent instruction was available. In essence it was a composite of a three-ring circus and a child care center at its peak.

I resented this "free" service for the reason that it attracted myself and others under false advertising. It should be re-worded as "a Free Hour of Marine Corps Calisthenics for Women" with optional access to weight lifting equipment following class. "Women's Weightlifting and Bodybuilding" is extremely misleading.

Women who are serious about toning and comprehensive exercise should try

Body Dynamics, a professionally monitored class offered on base, by women, for women. Although not free, an incredibly nominal fee covers one hard core hour all done to music on safe, comfortable wrestling mats, six days a week. Participants are urged to progress at their own pace. Showers, sauna and a weight machine are available and included in the fee.

I plead with the many women being misled by the routine at the mini-gym to look into this other, more professional and qualified program. It's your body, respect it.

An Exercise Addict

My turn

Hawaii Marine wants to hear from its readers to find out just what it is that makes you tick, think, act or react. Now's your chance to sound off by writing to the editor of Hawaii Marine and getting in your two cents worth. Address your letters to:

Editor,
Hawaii Marine
Joint Public Affairs Office
Marine Corps Air Station
Kaneohe Bay, Hawaii 96863

VA volunteers benefit cuts

WASHINGTON — The Veterans Administration plans several program changes. By volunteering more than \$110 million in budget cuts in several little-used programs, the VA expects to escape the upcoming government budget cuts and ensure that more important veterans benefits will not be curtailed.

"The savings will be used to save the taxpayers money," said a VA spokesman. Programs which received minimal use and will be eliminated are flight training and educational loans. Three programs will remain, but will be reduced: correspondence training, dental care and burial benefits.

Flight training will end Thursday and the Fiscal Year 82 savings are expected to be \$14 million. The VA found that only 16 percent of flight training graduates had full-time flying jobs.

Although the GI Bill is still a strong and active VA program, low interest VA educational loans

have been eliminated. A high default rate on the loans led to the demise of the program.

Studies on correspondence course training programs showed a high dropout rate and high incidence of fraud and abuse. Accordingly, the law now requires the veteran to bear a

larger share of the cost. Also effective Thursday, veterans will be reimbursed by the VA for 55 percent of the costs instead of 70 percent. Estimated FY 82 savings are \$3.2 million.

Free VA dental care for a former service member after leaving military service has been reduced from one

year to 90 days. The \$300-burial allowance, previously available to all veterans, is limited to those eligible for a VA pension or compensation, and to those who die in VA medical facilities.

The estimated FY 82 savings by reducing these two programs is \$92.9 million.

WITH COUPON INFLATION-FIGHTER COUPON

TIMEX

FREE Battery With Each Out Of Warranty Repair

A CLOCK HOUSE
Pearlridge Shopping Center
Phase I - 487-8825

7 DAY SERVICE ON MOST REPAIRS

WITH COUPON

Cinema

W Th F S S M T
MCAS Theater 1 2 3 4 5 6 7
Camp Smith Theater 3 7 8 9 10 11 12

1. I GO POGO — Jonathan Winters, Vincent Price, PG, comedy. A humorous political and social satire depicting the cartoon characters from the Georgia swamp of Okefenokee.

2. CHEAPER TO KEEP HER — Mac Davis, Tovah Feldshuh, R, comedy. Recently divorced, Davis has to find a new job and living quarters. He takes a job working for a feminist attorney, Feldshuh. His job is to investigate husbands and relate their activities.

3. TAKE THIS JOB AND SHOVE IT — Robert Hays, Barbara Hershey, PG, comedy. Hays is returning to his hometown to supervise the brewery his company recently purchased.

4. THE NUDE BOMB — Don Adams, Sylvia Frisfel, PG, comedy. The bumbling Agent 86 is called in to save the world from a group of maniacs who claim to have a formula that will destroy all known clothing fabrics.

5. CUBA — Sean Connery, Brooke Adams, R, drama. In the finale of Batista's regime in Cuba, Connery arrives in an attempt to promote British business interests.

6. THE LADY VANISHES — Elliot Gould, Cybill Shepherd, PG, comedy adventure. In 1939, the trans-European express yields mystery and intrigue for its unsuspecting passengers.

7. CAVEMAN — Ringo Starr, Barbara Bach, PG, comedy. The misadventure of a primate tribe of cavemen set in one zillion B.C. There is action, humor and campy special effects.

8. TOUCHED BY LOVE — Michael Learned, Diane Lane, PG, drama. A dedicated nurse's aid, Deborah Raffin, helps a child that is handicapped. The child, Lane, is confined to a wheelchair and barely has any contact with those around her. Raffin uses the crush Lane has on rock star Elvis Presley as one of her therapeutic instruments.

9. CATHY'S CURSE — Alan Scarfe, Beverly

Murray, PG, horror drama. When a young girl moves with her family to her father's boyhood home, she finds a sepia photograph of her aunt in the attic and becomes obsessed with the photo.

10. MANHATTAN — Woody Allen, Diane Keaton, R, comedy. The family of a TV comedy writer becomes separated and each have their own affairs.

11. THE POSTMAN ALWAYS RINGS TWICE — Jack Nicholson, Jessica Lange, R, drama. Nicholson is a lustful bum-hero who pursues sexy waitress lange. They develop a passionate affair and plot to murder her husband, John Colicos.

12. DEATH HUNT — Charles Bronson, Lee Marvin, R, action drama. When Bronson kills defending his home, Ed Lauter sets the scene so that Bronson appears the attacker. Bronson leaves his home and begins a trek toward safety fortified with ammunition and pursued by the Royal Canadian Mounted Police.

War Surplus

Genuine Government ISSUE SURPLUS

- * ARMY
- * NAVY
- * AIR FORCE
- * MARINES
- * ALL MILITARY SERVICES
- * CAMPING GOODS

97-719 Kam Highway
Pearl City
Phone: 456-5075

OPEN 7 DAYS!
9-6 P.M.

Orson's QUALITY SEAFOOD Ward Warehouse

CLIP AND SAVE

FREE SPINAL EXAMINATION

Danger Signals of Pinched Nerves:

1. Headaches, Dizziness, Blurred Vision
2. Neck Pain, Tight Muscles, Spasms
3. Shoulder Pain, Pain Down Arms, Numbness in Hands
4. Pain Between Shoulders, Difficult Breathing, Abdominal Pains
5. Lower Back Pain, Hip Pain, Pain Down Legs

Why FREE? Thousands of area residents have spine related problems which usually respond to chiropractic care. This is our way of encouraging you to find out if you have a problem that could be helped by chiropractic care. It is also our way of acquainting you with our staff and facilities.

Examination includes a minimum of 10 standard tests for evaluating the spine and a contour analysis photo as shown above.

While we are accepting new patients, no one need feel any obligation.

Most Insurance Accepted

Pacific Chiropractic

DAVID L. HALPAHL D.C. JEANNE C. HALPAHL D.C.
WHEMCO BLDG., NO. 237 682 KALUA ROAD
PHONE 261-0831

© 1981 R.J. REYNOLDS TOBACCO COMPANY

8 mg. "tar", 0.8 mg. nicotine av. per cigarette by FTC method.

CAMEL

Where a man belongs.



8 mg tar

Camel Lights.
Low tar. Camel taste.

Warning: The Surgeon General Has Determined That Cigarette Smoking Is Dangerous to Your Health.

ALL ABOUT HAIR . . .

Shampooing your hair with a good protein acid balanced shampoo often times isn't enough to keep it in really good condition. But when do you use an instant conditioner and when do you need more deep penetrating reconditioning? There is a simple test you can do to determine if your hair is in competent structural condition. Remove a strand of hair from the head above the ears and place it between your thumb and forefinger, now with the thumbnail and index fingernail of the other hand, run the distance of the hair strand rapidly (as you would curl ribbon with the blades of a pair of scissors). This will create a series of small curls. Then take the same strand and apply tension (pull straight) for ten seconds and release. To analyze the results look for the following:

1. If the hair completely returns to the curl pattern, it is in good condition and does not need additional reconditioning.
2. If the hair only partially returns (50 percent or less) it is structurally weak. In this case the hair needs both protein and moisturizing treatments.
3. If the hair falls limp, it is very weak structurally, and it could also be a sign of too much moisture. If the hair has been chemically damaged from perms or hair coloring or bleaching you will need intensive reconditioning. If there is just too much moisture and the hair is over elastic protein treatments will correct this condition.

The elasticity and strength of the hair are very important factors in determining what type of conditioning program you need. But the condition of the cuticle or outer layer of the hair is also important. The outer layer of the hair is covered with cuticles very similar to fish scales. When the hair is in good condition these are compact, when it is damaged they are raised. To test how far the cuticle imbrications have pulled away from the hair to do the following: Separate a small strand of dry hair and hold it firmly between your thumb and forefinger. Now slide the thumb and forefinger of your opposite hand along the strand from the end of the hair to the scalp. The more the hair seems to stick between the fingers or drag, the more damaged the cuticle scales are. The hair has a compact cuticle layer if your finger slides easily over the hair shaft with little or no resistance.

Next week we'll discuss how to correct these conditions once you have decided which type of damage you have.

Susan Beers' Salon

All hair services specializing in: hair styling, perms, manicures, pedicures, waxing & make-up.

110-C Makiki St. Kalaheo
CALL TODAY 261-8871

Daily Bread

The daily breakfast and weekend/holiday breakfast/brunch menus consist of fresh fruit, assorted hot and dry cereals, eggs to order, omelettes, assorted meats, creamed or chipped beef, hash browns and hot cakes or French toast.

All lunch and dinner menus include assorted salads, beverages, breads and desserts.

The menus for today through Tuesday are:

TODAY — Lunch: Soup, tamale pie, chicken vega, tacos, Mexican corn and Spanish sauce.
Dinner: Pepper pot soup, pork roast, natural pork gravy, apple stuffing, simmered blackeyed peas and asparagus au gratin.

THURSDAY — Lunch: Soup, breaded veal slices, mashed potatoes, tomato gravy and mixed vegetables.
Dinner: Soup, chipper perch, fried shrimp, french fries, Harvard beets and buttered succotash.

FRIDAY — Lunch: Soup, Salisbury steak with mushroom gravy, French baked potatoes, buttered peas and fried onions.
Dinner: Soup, fried chicken, mashed potatoes, brown gravy, green beans with mushrooms, and vegetable combination.

SATURDAY — Brunch/dinner: Soup, el ranch stew, noodles Jefferson, buttered green beans, french fried cauliflower.
SUNDAY — Brunch/dinner: Soup, grilled steak to order, potatoes on a half shell, peas and mushrooms and broccoli Polonaise.

MONDAY — Soup, baked spareribs with sauerkraut, barbecue spareribs, O'Brien potatoes, green beans and mushrooms and simmered corn.
Dinner: Chinese egg rolls with mustard, duck sauce, sukiyaki, chow mein noodles, sweet and sour pork, fried rice and vegetable combination.

TUESDAY — Lunch: Soup, baked chicken, chicken gravy, mashed potatoes, corn-on-the-cob and fried cabbage with bacon.
Dinner: Soup, roast duck with apple jelly glaze, rice/Philippine, beets in orange sauce and broccoli Polonaise.

TODAY — Oyster stew, fried fish sticks, french fried shrimp, baked macaroni and cheese, simmered pinto beans and buttered asparagus.
Dinner: Soup, Newport fried chicken, mashed potatoes, chicken gravy, simmered white beans, and buttered green beans.

THURSDAY — Lunch: Soup, beef liver and onions, cottage fried potatoes, cauliflower, peas, carrots and corn bread.
Dinner: Soup, beef balls stroganoff, buttered noodles, buttered broccoli and buttered corn.

FRIDAY — Soup, veal parmesan, french fried potatoes, buttered carrots and mustard greens.
Dinner: Soup, breaded pork chops, macaroni and cheese, buttered asparagus and fried okra.

SATURDAY — Brunch/dinner: Soup, Syrian beef stew, rice pilaff, buttered succotash and green beans.
SUNDAY — Brunch/Dinner: Soup, grilled ham steaks, pineapple

sauce, scalloped sweet potatoes and apples, corn O'Brien, and buttered peas and carrots.

MONDAY — Lunch: Soup, baked Italian sausage, stuffed green peppers, tomato sauce, french fried potatoes, buttered turnip and greens and ranch style beans.
Dinner: Soup, yakisoba, buttered peas, Harvard beets.

TUESDAY — Soup, chicken cacciatore, steamed rice, buttered broccoli and buttered corn.
Dinner: soup, grill steak, baked potato, mixed vegetables and simmered white beans.

KANEOHE MARINE CORPS AIR STATION

CLUB SYSTEMS' OCTOBER CALENDAR EVENTS

Officers' Club October 1981

SUNDAY	MONDAY	TUESDAY	WEDNESDAY	THURSDAY	FRIDAY	SATURDAY
• Oktoberfest Sat. Oct. 24				1 Liver & Onions Dinner — Beefsteaks 6-8:30	2 Fish & Chips Dinner — Mongolian BBQ 6-9 p.m. "Country Lane"	3 Every Saturday Evening Beef & Crab
4 Every Sunday Champagne	5 Mexican Plate Evenings Club Closed	6 Open Roast Beef Sandwich Evenings Dining Room Closed	7 Corn Beef And Cabbage Dinner — 6-8:30 p.m. Mongolian BBQ	8 Liver & Onions Dinner — Beefsteaks 6-8:30 p.m.	9 Fish & Chips Dinner — Mongolian BBQ 6-9 p.m. Movies (Rock)	10 Buffet 6-8:30 p.m.
11 Brunch 10-1 p.m. In the evening	12 Closed For Columbus Day	13 Beef Stew Evenings Dining Room Closed	14 Ham Steak Dinner — Mongolian BBQ 6-8:30 p.m.	15 Liver & Onions Dinner — Beefsteaks 6-8:30 p.m.	16 Fish & Chips Dinner — Mongolian BBQ 6-9 p.m. Wood & Brass	17 Beef & Crab Buffet
18 Prime Rib Buffet 6-8:30 p.m.	19 Mexican Plate Evenings Club Closed	20 BBQ Beef Evenings Dining Room Closed	21 Fried Chicken Dinner — Mongolian BBQ 6-8:30 p.m.	22 Liver & Onions Dinner — Beefsteaks 6-8:30 p.m.	23 Fish & Chips Dinner — Mongolian BBQ 6-9 p.m. Lukes Pineapple	24 Oktoberfest Illinois (Lanal) Dining Room Closed
25 Champagne Brunch Prime Rib Buffet	26 Mexican Plate Evenings Club Closed	27 Chopped Steak Evenings Dining Room Closed	28 Chop Suey Dinner — Mongolian BBQ 6-8:30 p.m.	29 Liver & Onions Dinner — Beefsteaks 6-8:30 p.m.	30 Fish & Chips Dinner — Mongolian BBQ 6-9 p.m. Movies (Rock)	31 Beef & Crab Buffet 6-8:30 p.m.

Staff NCO Club October 1981

SUNDAY	MONDAY	TUESDAY	WEDNESDAY	THURSDAY	FRIDAY	SATURDAY
• All luncheon specials are served Mon. thru Friday 11 a.m.-1 p.m. • SNCO Wives Business Meeting - Oct. 5, 1981 7:00 p.m. (all SNCO wives & active duty are welcome). • Prime Rib and Crab - All You Can Eat - 6 till 9 p.m. • Candlelight Dining featuring Paul and Val Shrimp - 6 till 9 p.m. Fish and Chips served every Friday 11 a.m. till 1 p.m.				1 Veal Patties Mongolian Barbeque 5:30 till 8:30 p.m. "MOHAIR" 7:30-10:30 p.m.	2 "WOOD ROSE" 9 p.m.-1 a.m.	3 "DAVE WEST" 9 p.m.-1 a.m.
4 BUFFET BRUNCH SERVED	5 Mexican Plate 11 a.m. till 1 p.m. Happy Hour 5:00 till 6:00 p.m.	6 Meatloaf Happy Hour 5:00 till 6:00 p.m.	7 Lasagna Family Night Buffet 5:30 till 8:30 p.m.	8 Teriyaki Beef Mongolian Barbeque 5:30 till 8:30 p.m.	9 "ELECTRIC RANGERS" 9 p.m.-1 a.m.	10 ★ "Star" 9 p.m.-1 a.m.
11 EVERY SUNDAY 10 a.m.	12 Mexican Plate 11 a.m. till 1 p.m. Happy Hour 5:00 till 6:00 p.m.	13 Stuppy Joe Happy Hour 5:00 till 6:00 p.m.	14 Pork Chop Friday Night Buffet 5:30 till 8:30 p.m.	15 BBQ Ribs Mongolian Barbeque 5:30 till 8:30 p.m. "MOHAIR" 7:30-10:30 p.m.	16 "WOOD ROSE" 9 p.m.-1 a.m.	17 "DAVE WEST" 9 p.m.-1 a.m.
18 till 1 p.m. STEAK OUT — Charcoal grill	19 Mexican Plate 11 a.m. till 1 p.m. Happy Hour 5:00 till 6:00 p.m.	20 Hot Turkey Sandwich Happy Hour 5:00 till 6:00 p.m.	21 Short Ribs Family Night Buffet 5:30 till 8:30 p.m.	22 Chicken Ala King Mongolian Barbeque 5:30 till 8:30 p.m.	23 "ELECTRIC RANGERS" 9 p.m.-1 a.m.	24 "WOOD N BRASS" 9 p.m.-1 a.m.
25 own steak 4 till 7 p.m.	26 Mexican Plate 11 a.m. till 1 p.m. Happy Hour 5:00 till 6:00 p.m.	27 BBQ Beef Happy Hour 5:00 till 6:00 p.m.	28 Shoyu Chicken Family Night Buffet 5:30 till 8:30 p.m.	29 Spaghetti & Meatballs Mongolian Barbeque 5:30 till 8:30 p.m. "MOHAIR" 7:30-10:30 p.m.	30 ★ "STAR" 9 p.m.-1 a.m.	31 "COUNTRY SHADOWS" 9 p.m.-1 a.m.

Enlisted Club October 1981

SUNDAY	MONDAY	TUESDAY	WEDNESDAY	THURSDAY	FRIDAY	SATURDAY
• Tickets on sale in club office for Marine Corps Ball Nov. 10, 1981. \$6.00 per person includes dinner, two bands, photos available, drinks reduced prices, free etched glass as memento of 106th Marine Corps Birthday. • New Dining Room Hours: Monday-Friday 11:00-1:00 p.m., Sunday-Thursday 5:00-8:00 p.m., Friday and Saturday 5:00-9:00 p.m.				1 Country Lane 7:30-11:30 p.m. Moongate Lounge	2 Black Widow Rock n Roll 8:00-12:00 Ballroom D.J. Top 40 Disco 8:00-12:00 Moongate Private Party Moongate Prime Rib Special - 6.95 Prime Rib and Crab - 9.85	3 Movies Rock n Roll Ballroom D.J. Top 40 Disco 8:00-12:00 Moongate Lounge
4 Club opens from 2:00 p.m. till 8:00 p.m. every Sunday starting in Oct.	5 Every Monday Football Night Free Popcorn and Happy Hour Prices from 6:30-8:30 p.m. All you can eat spaghetti 5:00-8:00 \$3.50	6 Every Tuesday D.J. and Video Rock n Roll Moongate Lounge 7:30-11:30 p.m.	7 Every Wednesday D.J. and Video Rock n Roll Moongate Lounge 7:30-11:30 p.m. Menu Dining 5:00-8:00 p.m.	8 South Bound Moongate Lounge 7:30-11:30 p.m. Menu Dining from 5:00-8:00 p.m.	9 Master Rock n Roll 8:00-12:00 p.m. Ballroom Private Party Moongate Prime Rib Special - 6.95 Prime Rib and Crab - 9.85	10 Freestyle and D.J. Top 40 Disco Moongate 8:00-12:00 p.m.
11 Menu Dining in the "Breezy Inn" from 5:00-8:00 p.m.	12 Every Monday All you can eat spaghetti for \$3.50 in the "Breezy Inn"	13 Every Tuesday in our "Breezy Inn" All you can eat Smergobord from 5:00-8:00 p.m. for \$5.00	14 Join us in the "Breezy Inn" for dinner from 5:00-8:00 p.m.	15 Country Lane 7:30-11:30 p.m. Moongate Lounge Menu Dining from 5:00-8:00 p.m.	16 Excalibur Rock n Roll 8:00-12:00 Ballroom, D.J. Top 40 Moongate 8:00-12:00 p.m. Prime Rib Special - 6.95 Prime Rib and Crab - 9.85	17 Pure Energy Top 40 8:00-12:00 Ballroom D.J. Disco Moongate 8:00-12:00 p.m.
18 Club opens from 2:00 p.m. till 8:00 p.m. every Sunday starting in Oct.	19 Every Monday Football Night and Spaghetti Nite 5:00-8:00 p.m.	20 D.J. and Video Moongate Lounge 7:30-11:30 p.m. Smergobord 5:00-8:00 p.m.	21 Guest Night in the Moongate Lounge. Bring the boss by for pupa's and a drink or dinner in the "Breezy Inn"	22 Country Lane 7:30-11:30 p.m. Moongate Lounge Menu Dining from 5:00-8:00 p.m.	23 Genesis and D.J. Top 40 and Disco 8-12 Moongate Lounge Prime Rib Special - 6.95 Prime Rib and Crab - 9.85	24 RC Express and D.J. Top 40 Disco 8:00-12:00 p.m. Moongate Lounge
25 Menu Dining in the "Breezy Inn" from 5:00-8:00 p.m.	26 Free popcorn and Happy Hour prices from 6:30-8:30 p.m.	27 Advisory Board Meeting 11:30 Smergobord 5:00-8:00 p.m.	28 Enjoy a meal at the "Breezy Inn"	29 Country Lane 7:30-11:30 p.m. Moongate Lounge Menu Dining from 5:00-8:00 p.m.	30 Black Widow Rock n Roll 8-12 Ballroom Disco Top 40 Moongate Private Party 8:00-12:00 p.m. Prime Rib Special - 6.95 Prime Rib and Crab - 9.85	31 Monster Mash Night in the Ballroom 8-12 p.m.

Chairman of the Board

The AVALON HILL Game Company

WAR GAMES
FANTASY GAMES
BOARD GAMES

487-9445

Pearlridge Phase I (Upstairs) Near Liberty House & McDonald's

GOOD YEAR

SALE PRICED!

PREMIUM QUALITY RETREADS

6-Rib Polyester

POWER STREAK 78

Size	SALE PRICE	Plus Tax
8.75-13	27.99	1.61
9.75-14	31.99	1.75
10.75-14	33.99	2.28
11.75-15	35.99	2.36
12.75-15	38.99	2.57

Size A78-13 blackwall.

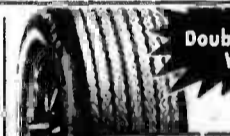
- Road-hugging tread
- Smooth-riding polyester cord body
- Goodyear's best-selling bus ply tire

SALE ENDS OCT. 3rd

A78-13	\$14.95
600-13	
613-13	
878-13	
500-14	\$15.95
700-14	
070-14	
C78-14	

PLUS TAX & RECAPABLE CASING

MONROE SHOCK SPECIAL
HEAVY DUTY
Installation Available
\$16.99



Double Glass-Belted WHITEWALL

MONROE MACPHERSON STRUT-REPLACEMENT CARTRIDGE
FRONT PAIR INSTALLED MOST CARS ALIGNMENT EXTRA
\$99

CUSHION BELT POLYGLAS

Whitewall Size	PRICE	Plus Tax
D78-14	24.99	2.04
E78-14	24.99	2.14
F78-14	24.99	2.28
G78-14	24.99	2.68
H78-15	24.99	2.50
I78-15	24.99	2.72
J78-15	24.99	2.95

\$36
Big in performance, low in price — that's the Cushion Belt Polyglas story. Smooth-riding polyester cord body, 8mm tape-glass belts for strength, handling, and puncture-resistance in the tread area. White sidewall design!

SALE! Performance That Makes Driving Fun Again.

CUSTOMGARD GT RADIAL

\$53

Size	PRICE	Plus Tax
BR80-13	52.99	2.07
FR80-14	52.99	2.56
FR70-14	52.99	2.67

• 110S/70R13 available Black letter, plus \$2.07 FET, no trade required.
• A special compound that's top to top.
• The outer letter case for 200-245 and 245-245.
• The strength of 4 hidden belts of Flexion cord provides a stable base of good load performance.
• Approves road leading road performance.

Engine Tune-Up

\$46.88
\$51.88
\$54.88
GAS SAVER!

GAS SAVER!
Includes: lube, oil, and labor — no extra charge for air conditioned cars. \$4 fee for electronic ignition.
• Electronic engine charging and starting systems analysis & install.
• New spark plugs, condenser, rotor & Set point and timing @ Adjust carburetor @ Includes Datsun Toyota, VW and light trucks.
Warranted 90 days or 3,000 miles, whichever comes first.

COMPARE and SAVE BRAKES

\$49.99
\$39.99

TOMBAY BATTERY

\$52.95

Front-End Alignment

\$17.95

MOTOR SUPPLY

Governmentally Located in Kailua
771 Kailua Rd.
M.F. 9:00-5:00
SAT. 9:00-1:30
SUN. CLOSED

Students participate in bicycle rodeo

by Sgt Ernie Carter

Safety and precision were stressed most during the 4th Annual Mokapu School Bicycle Rodeo, according to Gunnery Sergeant Philip Johnson from the Security Department here.

Fifty-three Mokapu students from grades one through six mounted their two-wheeled steeds and rode in the rodeo Wednesday.

"The rodeo is the final phase of a bicycle safety program that started the first day of school," Sergeant Eddie Burch, also from the Security Department, said. "Two lectures were given by the

military police and Officer Clint Akana from the Honolulu Police Department's traffic section."

The lectures were given to children in kindergarten through third grade and from fourth grade through sixth.

Entrants in the rodeo had to take a 20-question written examination the day before the event. The 20 True/False statements included:

- All bicycles must be equipped with either a foot or hand brake;
- All bicycles should be equipped with a horn or bell always;
- At stop signs the bike rider

should stop, but if there are not cars around, the rider may go through the stop sign very slowly; and

- Bike riders may hang on to cars and trucks only if they are going up hills.

Officer Akana, who assisted with the exams and the rodeo's bicycle safety obstacle course, has three years experience with the bicycle rodeo program. He works five days-a-week traveling from school to school on the Windward side of Oahu.

He and Officer Roy Hamasaki, who handles the Leeward side of the island work year-around

promoting bicycle safety.

The best three cyclists from each of the six grades at Mokapu will receive trophies from the Honolulu Police Department and will be eligible to enter in the big rodeo for the Windward side of the island to be held in June.

The number one winner in that competition will win a new bicycle.

In addition to the written test and the rodeo itself, the MPs made safety maintenance inspections of the entrants' bicycles. They also registered the bikes to help prevent theft or aid in recovery if they are stolen.



Photo by SSgt Joe Blackburn

SIGNAL FOR SAFETY — Donovan Adams, a sixth grader at the Mokapu School, signals his intention to turn right during one phase of the school's 4th Annual Bicycle Rodeo. Hand signals comprised three of the six tests of bicycle safety and precision during the rodeo Wednesday.

ENCHANTED TRAVEL, INC.

IATA **ARTA**

1051 Keolu Dr. in Kailua (Next to Dairy Queen) **261-7947**

OPEN M-F 9:00-5:00, SAT. 9:00-12:00

Rent a Washing Machine or Dryer

\$1350 a month

SERVICE INCLUDED WE PICKUP AND DELIVER

PH. 847-1344

TW SYSTEMS
2522 Rose St. in Kalihi off Middle St.

50% OFF BERNINA 50 and VIKING 50 50% OFF

BERNINA 800	BACK BY POPULAR DEMAND FOR 5 DAYS ONLY	VIKING 5710
Sug Retail \$650	Demo Sale \$325	Sug Retail \$596
• Demo Model	• Open Arm	• Viking Electronic w/ Built-In Cams
• Exclusive 25 Year Written Warranty	• Monograms	• Self-Adjusting Tension
• Makes Buttonholes	• Self Adjusting Tension	• Overlock
		• Blind Hem
WE GUARANTEE THE LOWEST PRICES ON ALL OUR MACHINES		
Quantities Limited	Hurry Sale Ends Sun. 10/4/5 pm	Quantities Limited
		Hurry Sale Ends Sun. 10/4/5 pm

PACIFIC SURPLUS
1247-F Pall Hwy. (1 block east of Castle Hospital) In the new 7-11 Complex in Kailua

CALL NOW 262-8131

Monday thru Saturday 10:00-8:00
Sundays 11-5

See your Career Planner

You'll get straight talk. Answers to your questions. And a fair look at all the Corps has to offer.

1/3
GySgt Vlar C.W.
257-2673

3d AAV
Sgt Stewart
257-2694/3537

H&MS-24
Sgt Detzel
257-2486

HMM-262
GySgt King
257-2489/3248

VMFA-235
GySgt Mitchell
257-2630/2904

SOMS
Sgt Romero
257-3439

2/3
GySgt O'Guin
257-2142

3d Recon
Sgt Piche W.E.
257-2758

MABS-24
Sgt Zeek
257-3693

HMM-265
SSgt Sult
257-2777

1st Radio Bn
GySgt Fairbanks
257-2725

HMH-463
Sgt Bendon
257-2208

Stay Marine.

To deliver.

In the Corps, you don't have to worry about a big medical bill when your child is delivered. Because low-cost medical care is available for the entire family. Plus you don't even have to pay insurance premiums for this coverage. Now what civilian job can offer that? It's just one of the advantages a Marine family has. When you add up security and pride in the Corps, medical, educational, retirement and other benefits, you've got some good reasons to...

Stay Marine.





Photo by Sgt Inez J. Stoner

CHECKING A FUSE — The Electronics Technician of the Year, Gunner Sergeant James Stephens, checks the fuse box in an F-4

Phantom aircraft. GySgt Stephens works in the Maintenance Control Section of the Marine Fighter Attack Squadron-235.



Photo by Sgt Inez J. Stoner

ELECTRONICS TECHNICIAN — "This is the highest award in my field," said Gunner Sergeant James Stephens, this year's recipient

of the Electronics Technician of the Year Award. "It's possibly the climax of my career so far."

Award recognizes professional knowledge

Leatherneck strives for career goals

by Sgt Inez J. Stoner

The Electronics Technician of the Year has been named by the Marine Corps Aviation Association and Gunner Sergeant James Stephens Jr., Marine Fighter Attack Squadron-235, will be standing up to accept the award during ceremonies in Detroit, Oct. 8 through 11 1981.

"It's the highest award in my field and possibly the climax of my career so far," said GySgt Stephens. "This award recognizes the individual for his professional knowledge." He added, "The standard of excellence has always been there, it's just the first time I've been recognized like this for it."

THE 29-YEAR-OLD native of Valdosta, Ga., arrived at the Air Station in March 1980. Until February 1981 he was the noncommissioned officer in charge of the Aviation Electrical Systems Technician Shop with VMFA-235. "I used to be responsible for only one shop," explained GySgt Stephens, "now I'm with Maintenance Control, and am responsible for the maintenance for the entire squadron."

GySgt Stephens came to VMFA-235 with an abundance of practical experience and education. He also claims to have worked on nearly every type of Air Force, Navy and Marine Corps aircraft.

He was graduated in the top 10 percent from almost every military school he attended including a 26-week primary course in electrical systems at the Naval Air Station, Jacksonville, Fla. He also attended the six-week Automatic Flight Control School at Marine Corps Air Station,

Beaufort, S.C.; a nine-week course in electrical systems at MCAS, Cherry Point, N.C. and 10 weeks of advanced electronics in Memphis, Tenn. GySgt Stephens also ranked in the top 10 percent at the Staff Noncommissioned Officers' Academy, MCAS, El Toro, Calif. in 1976.

DURING THE Vietnam conflict GySgt Stephens served with the Marine Corps Composite Reconnaissance Squadron, VMCA-1 from December 1972 through December 1973. His decorations include three awards of the Good Conduct Medal, the Sea Service Deployment Ribbon, the Navy Unit Commendation and the Meritorious Unit Commendation.

From 1977 to 1980 GySgt Stephens worked in research and development with the Marine Aviation Detachment at Point Mugu, Calif. "I was involved in the ground work of an electronics system we'll be seeing in the future," revealed GySgt Stephens.

"I've had a very natural progression for a supervisor," claims the 11-year Marine. "I work my shop as a team. It's my job as a leader to pull my people together as a team." According to the gunny, "if you try to be the best in your field, then your people will strive to reach those goals with you."

"I LOVE THIS job," said GySgt Stephens. "This is where it's at. It's very rewarding and I always get 100 percent backing."

Although he claims that it is not a driving force, GySgt Stephens admits that he wouldn't mind winning the award again in the future. "The next big step in my career, though, will probably be into the warrant officer ranks," he announced. "I know that I have to

fulfill myself and this may be the way."


GySgt Stephens and his wife, Theresa, have an 8-month-old son,

John Phillip. The gunny plans to attend the Marine Corps Aviation Association's Awards Ceremony in Detroit this year to accept his award.



Photo by Sgt Inez J. Stoner

INSIDE THE ENGINE COMPARTMENT — Gunner Sergeant James Stephens inspects the wiring inside the engine compartment of an F-4 Phantom aircraft. GySgt Stephens, the recipient of this year's Electronics Technician of the Year Award, works in Maintenance Control, Marine Fighter Attack Squadron-235.



RAMS

VS

CLEVELAND BROWNS

OCT. 4 — 9:35 A.M.

PLAY BY PLAY WITH BOB STARR/DICK BASS WITH STEVE BAILEY

KDEO

COUNTRY RADIO



SPIN THE DISC & WIN PRIZES!

VIDEO CENTER, Kailua, invites you to SPIN THE DISC and win prizes! It's easy! Limited to Video Club members, so join now and get 2 FREE spins! Buy a video recorder and get 3 spins. Any purchase gives you 1 spin. Prizes include: a color TV, a video disc player, movie rentals and much more!

Remember: ALL WHO SPIN... WIN!

SUPER LOW!

SPECTACULAR!

NEVER BEFORE HEARD OF!

NEVER TO BE REPEATED!

RIDICULOUSLY CRAZY BALE!!!



HITACHI



VT-9000 (Not exactly as shown)

Seriouly, folks, you'll never find a better time to buy than now at VIDEO CENTER — on Hitachi's 8000 V.C.R., with the ten day/one program tuner-timer & full function remote control! Buy now and receive the collector's item Video t-shirt & \$50 free club membership!

* A drawing will be held Oct. 10 during a remote by Ron Wiley on KIKI/Radio!

ISLAND VIDEO CLUB

FREE \$50 Club Membership with the purchase of any V.C.R.

- 50% discount on film rentals!
- 10% on all accessories!
- Cost, plus 10% on all brands, Zenith, Panasonic, RCA, etc
- Film trade-in program.
- Equipment rental service.
- Special discounts on service, free monthly newsletter & more!



The Video Specialty Stores

FACTORY AUTHORIZED SERVICE CENTERS

1-800-OPEN



SCHEDULED AIRLINES TICKET OFFICE (SATO)

Staffed by full time Airline personnel To assist in your travel requirements

- Individual leave
- Family travel to the Mainland
- Neighbor Island
- International
- Dependent travel to West-PAC
- Fares
- Flight Information

Contact SATO for reservations and airline tickets at any one of our three convenient on base locations

Pearl Harbor	Bldg. 487 - Tele: 422-0571	Office hours - Mon. thru Fri. 0730-1600
Camp Smith	Bldg. 2D - Tele: 487-1567	Office hours - Mon. thru Fri. 0800-1600
Kaneohe MCAS	Bldg. 209 - Tele: 254-1564	Office hours - Mon. thru Fri. 0730-1530

Ingenius.



DIMENSION 3 MICROWAVE/ CONVECTION OVEN NE-9900

3 Different ways to cook quickly, naturally and evenly. PLUS Panasonic's Unique COOK-A-ROUND Magnetic Turntable.

1. The Convenience of MICROWAVE COOKING

- Defrost, thaw and cook foods in a flash
- Cook by Power and Time or by Temperature Probe

2. The Tasty Appeal of CONVECTION COOKING for Browning and Baking

- Meats come out tender and evenly browned
- Breads, pastries, cakes and pies done by constant circulation of dry, heated air

3. The Unmatched Speed & Versatility of COMBINATION MICROWAVE/CONVECTION COOKING

- The best of both worlds... fast cooking with eye appeal for meats, roasts, pork, lamb or poultry.

Panasonic

just slightly ahead of our time.

Available At Your Military Exchange

Combat arms officers get second chance at occupation of choice

HQMC, WASHINGTON — Marine Corps Bulletin 1210 announces the establishment of a voluntary program for company grade officers in the infantry, artillery and tracked vehicle military occupational specialties to serve a tour in an MOS of their choice outside their primary MOS.

MOS ASSIGNMENTS from the Basic School are made in a manner that ensures as many officers as possible gain a fundamental knowledge of

the Combat Arms field.

The needs of the Marine Corps require, however, fewer officers in the Ground Combat Arms field at the grade of first lieutenant and captain than normally advance to those grades. At the same time the following MOSs presently are manned at less than desired strength of first lieutenants and captains which requires officers from overpopulated MOSs to fill valid requirements: 01 administration; 02 Intelligence; 04 Logistics; 26 Signal Intel-

ligence; 30 Supply; 35 Motor Transport; 40 Data Systems; and 58 Military Police.

First lieutenants and captains in MOSs 0302, 0802, 1802 and 1803 with two years commissioned service and at least one year experience in their primary MOS may volunteer for a tour in one of the above MOSs.

If found suitable, selected volunteers will be given appropriate schooling (if required), receive an additional MOS and if possible, will receive their choice of duty station for the tour of

duty in their selected additional MOS.

OFFICERS SE-lected will not lose their primary MOS involuntarily and will continue to share in the opportunities for later service in the Combat Arms field.

The length of the tour will vary from one to three years, after attaining MOS qualification, depending on the billet location and requirement.

Reserve officers who desire to volunteer for a noncombat arms tour of duty must have one year of active

service after MOS

qualification is achieved or submit a request to extend their end of active service date.

Officers may volunteer for a tour by submitting an Administrative Action Form (NAVMC 10274) to the Commandant of the Marine Corps (Code MMOA) in the following format:

Name, grade, social security number, PMOS, additional MOSs currently held.

End of active service date (Reserve officers only).

Current duty station

and date current tour began.

I desire a tour in MOS.

I am willing to extend my end of active service date (Reserve officers only, if required.)

Duty station preference for tour. (Indicate three duty stations, include one major command and one geographic preference, East Coast, West Coast, Overseas.

Use of geo-location codes described in paragraph 1215 of MCO P1080.20G is encouraged.)

KDEO RADIO, AM 94

WAKE UP IN THE COUNTRY WITH **RON JACOBS** WEEKDAYS 6-9AM.

YOUR FAVORITE MUSIC FROM THE PAST ON **REPEAT PERFORMANCE** WITH HARLEY E. AND BETTY B. ...SUNDAYS 6-10PM.

FIND OUT WHERE YOUR FAVORITE SONGS ARE ON THE NATIONAL CHARTS WITH **AMERICAN COUNTRY COUNTDOWN** WEEKENDS, 9AM-NOON.

HEAR THE BIGGEST COUNTRY STARS IN CONCERT ON **LIVE FROM GILLEY'S & LIVE FROM THE LONE STAR CAFE**, SATURDAYS 7-9PM.

NEWS WITH CHARLY ESPINA AND THE MUTUAL NETWORK.

THE BEST OF COUNTRY, FROM THE COUNTRY.

KDEO
COUNTRY RADIO

Postal Union launches educational campaign

"There is a great need for public awareness, and it is for this reason that the National Mail Handlers Union has embarked on this Educational Support Campaign," stated Lonnie Johnson, National Director of the union. He recently announced the campaign on behalf of the National Association for Sickle Cell Disease and the National Easter Seal Society.

THE UNION HAS arranged for posters to be displayed on public transportation in eight cities during a three-month campaign. The cities are Washington, New York, Chicago, Detroit, Cleveland, Atlanta, San Francisco, and Los Angeles.

The National Association for Sickle Cell Disease, Inc. is a voluntary organization of community groups involved in sickle cell programs throughout the nation and the Bahamas. NASCD is the only national association

established to combat a health problem in the black community, and is the only national volunteer organization working full time, on a national level, for comprehensive sickle cell disease programming.

Sickle cell anemia is an inherited blood disease which affects Black Americans. One out of 500 blacks has been estimated to have sickle cell anemia, and one out of 12 blacks has sickle cell trait. Other races who have been found to have sickle cell trait include those of Mediterranean descent, Spanish, Greek, Italian, Sicilian, Turkish, and East Indian.

NASCD AND ITS affiliate member organizations participate in a variety of activities to keep the public aware of the impact and implications of sickle cell anemia. Programs include counselor training, preparation and distribution of educational materials

worldwide, conducting workshops and seminars, providing technical assistance at the national, state, and local levels. Under the leadership of the NASCD, hundreds of genetic counselors have been trained in many communities in the United States, Africa, and the Bahamas to provide non-directive sickle cell trait counseling. Other services provided by member organizations include blood banks, testing and screening, tutorial services, summer camps for children with sickle cell anemia, and vocational rehabilitation. NASCD provides support for research activities leading to improved treatment and eventual cure.

Dr. Charles F. Whitten, National President of NASCD announced that September was National Sickle Cell Month, and the NASCD will be conducting educational programs throughout the nation. The

goal of the 130,000 member Union is to create a supportive and informed public through this campaign.

THE NATIONAL Association for Sickle Cell Disease and its affiliates are supported by voluntary contributions from the general public, and from thousands of federal and postal employees, and military personnel through the Combined Federal Campaign. All contributions are tax deductible.



KNOWLEDGE — National Association for Sickle Cell Disease, Inc. participated in health education programs at the Federal Building in Los Angeles. Federal employees received educational materials on sickle cell disease and free testing.

GET OUT OF DEBT

through Chapter 13
A federal law which helps to pay off your debts without borrowing and in payments you can afford, stops creditor harassment and law suits, protects your job, co-signers and property. Initial consultation or info packet are without obligation.

Please call:
HOWARD Y. TANAKA
Attorney versed in Chapter 13 filings
Suite 703, Ali Bishop Bldg.
1136 Union Mall, Honolulu
Telephone: 526-1544

NOW HEAR THIS! SUZUKI SERVES THE U.S.M.C.

In Kaneohe
46-144 Kahuhipa
Ph. 235-3300

Full line of
Mopeds,
Motorcycles,
Parts & Service.

A DIVISION OF
MONTGOMERY MOTORS

GRAHAM CELLULITE SALON AND DIET CENTER

50% OFF

CELLULITE, WEIGHT CONTROL & NATURAL FACELIFT PROGRAMS!

A SPECIAL MILITARY OFFER AT OUR AIEA SALON ONLY. EXPIRES SEPT. 30, 1981.

PH. 487-9066 or 737-5885
FOR FREE CONSULTATION

• AIEA SHOPPING CENTER, SUITE 230E

• Blaupunkt • Concord • Craig • Clarion

SPECIAL \$199⁹⁵
Reg. \$259.95

MITSUBISHI CAR AUDIO

RX-752 AM/FM MPX CASSETTE

- 5 AM or 5 FM pushbutton tuning
- Separate AM/FM car illumination VHS sensor
- FM Stereo
- Subcarrier Stereo Reception Control (SRC)
- Super DIALOC circuit
- Full speaker power tap
- Auto-reverse
- Locking tape counter/stop
- "Punch-off" tape protection mechanism
- Tape program selector switch
- Super DTM checker for imports
- Power antenna lead

Specializing in custom systems for your car.
Same day installation.

Auto Stereo Connection
3159 Keopaka St. 836-4055
(Behind Airport Ramada Inn) Mon-Fri. 9-6

• Mitsubishi • Pioneer • Jensen • Marantz

CONSOLIDATED THEATRES

KAM D.I. "SUPER" SWAP MEET
EVERY WED. - THURS. - SAT. & SUN.
7:00 AM to 3:00 PM
Opp. Pearlridge Ctr. • Ph. 536-3576 or 488-5822

<p>WAIKIKI #1 Seaside nr. Kalaheua 923-2394</p> <p>MARSHA MASON KIRSTY McNICHO "ONLY WHEN I LAUGH" (PG) 12:45 • 2:00 5:30 • 6:50 & 10:30 PM</p>	<p>HAWAII 1130 Bethel 536-6300</p> <p>FRIDAY-SUNDAY "FOUR SEASONS" (PG) "SOMEWHERE IN TIME" (PG) Call Theatre For Show Times</p>
<p>WAIKIKI #2 ENDS TOMORROW Five episodes The odds are even. "FORCE FIVE" (R) 7:30 • 8:50 • 11:30 P.M.</p>	<p>TOYO 1230 College Walk 538-1654</p> <p>STARTS FRIDAY FILIPINO FILM "TERIDOL DOBOL" "4 NA MAHINA" Call Theatre For Show Times</p>
<p>WAIKIKI #3 Kalaheua nr. Seaside 923-5353</p> <p>STARTS FRIDAY TREAT WILLIAMS "BRUCE OF THE CITY" (R) Call Theatre For Show Times</p>	<p>LIBERTY 1179 Nuuanu 537-1686</p> <p>STARTS TOMORROW "TRIBE" (PG) "KUNG FU COUPLE" Call Theatre For Show Times</p>
<p>KUHIO #1 2095 Kuhio 941-4422</p> <p>WILLIAM HURT RICHARD CRONIN "BODY HEAT" (R) TONIGHT: 8:45 • 9:50 & 10:15 PM</p>	<p>KAM D.I. #1 Moanalua nr. Kam Hwy. 488-3035</p> <p>"FORCE FIVE" (R) 7:30 & 10:30 PM "DEADLY RESSING" (R) 8:45 PM ONLY GATES OPEN AT 8:15 PM</p>
<p>KUHIO #2</p> <p>"AN AMERICAN WEREWOLF IN LONDON" (R) TONIGHT: 8:15 • 9:35 & 10:15 PM</p>	<p>KAM D.I. #2</p> <p>STARTS FRIDAY BILL MURRAY "STRIPES" (R) Call Theatre For Second Screening GATES OPEN AT 8:45 PM</p>
<p>KAPIOLANI 1646 Kapiolani 955-5115</p> <p>"WIL SQUAD" (R) TONIGHT: 8:30 • 9:30 & 10:15 PM</p>	<p>PEARLRIDGE 1 Pearlridge Center 487-5581</p> <p>STARTS FRIDAY ROGER MOORE "FOR YOUR EYES ONLY" (R) Call Theatre For Show Times</p>
<p>ASIAN CINEMA #1 Beverly Hills at Keraunoku 944-9644</p> <p>ENDS TONIGHT "TRAIL OF BLOOD" with Subtitle 8:30 • 9:15 & 10:05 PM</p>	<p>PEARLRIDGE 2</p> <p>"ZORRO, THE DAY BLADE" (PG) 8:30 & 10:30 PM "CARNIVAL" (PG) 8:15 PM ONLY</p>
<p>ASIAN CINEMA #2</p> <p>STARTS "DISORDERLY" ALL NEW "SHAMAMA" with Subtitle Call Theatre For Show Times</p>	<p>PEARLRIDGE 3</p> <p>CHRISTOPHER REEVE GERTIE HACHEMAN "SUPERMAN" (PG) TONIGHT: 8:30 • 9:00 & 10:15 PM</p>
<p>UNIVERSITY University 1910 University 995-4144</p>	<p>PEARLRIDGE 4</p> <p>BRODERICK JOHNSON "ENDLESS LOVE" (R) TONIGHT: 8:15 • 9:30 & 10:15 PM</p>
<p>CINEMA 11111 995-2391</p>	<p>KAILUA D.I. 917 Pa. Highway 261-6032</p> <p>STARTS FRIDAY "THE FIRST WIVES" "SODAS" (R) GATES OPEN AT 8:45 PM 8:15 PM STARTS AT 7:45 PM</p>
<p>ARLAVI Aiea Shopping Center 254-1330</p> <p>STARTS FRIDAY "GLASS" (PG) "GLASS" (PG) 8:15 PM STARTS AT 7:45 PM</p>	



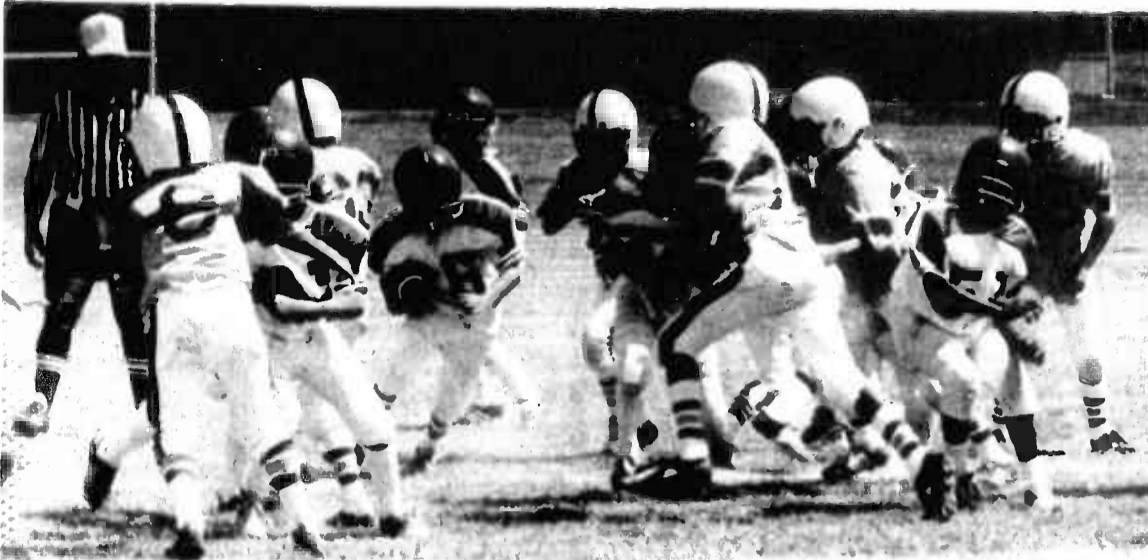
WE'VE BEEN FLYING FROM HONOLULU TO DALLAS-FORT WORTH AND BEYOND FOR TWELVE YEARS.

Fly Braniff's 747 nonstops to Dallas-Fort Worth any day of the week. From there, you can connect to Braniff cities in Britain, South America, Canada, Mexico and throughout the U.S.A. Without ever changing airlines or terminals.

- | | | | |
|--|---|--|---|
| <p>U.S.A.
Amarillo
Austin
Chicago
Corpus Christi
Dallas-Fort Worth
Des Moines
Fort Lauderdale
Harlingen
Houston
Kansas City
Lubbock
Memphis
Miami</p> | <p>Midland-Odessa
Minneapolis-St. Paul
Nashville
New Orleans
New York-Newark
Oklahoma City
Omaha
Orlando
Philadelphia
San Antonio
Tampa-St. Petersburg
Tulsa
Washington, D.C.-Baltimore
Wichita</p> | <p>CANADA
Montreal
Toronto</p> <p>BRITAIN
London</p> <p>SOUTH AMERICA
Asuncion
Bogota
Buenos Aires
Cali
Caracas</p> | <p>Guayaquil
La Paz
Lima
Maracaibo
Panama City
Quito
Rio de Janeiro
Santiago
Sao Paulo</p> <p>MEXICO
Acapulco
Mexico</p> |
|--|---|--|---|

For reservations, call your travel agent, corporate travel office or Braniff in Hawaii toll free at (800) 527-5090.

BRANIFF



LOOKING FOR A HOLE — A Kaneohe Midget ball carrier searches for daylight.

Boys tackle rough sport

Story and photos by Sgt Pepper Davis

Many fans withstood the pulsating heat of an autumn sun Sept. 19, to witness the opening day of the Youth Athletic Association gridiron battles between Air Station teams and Wheeler Air Force Base teams.

Divided into three teams — the Termites Bulldogs, the Pee Wee Trojans and the Midget Trojans, the Kaneohe kids fought Wheeler's three teams to one win, one tie and one loss.

The Termites opened the show and stalemated their opponents throughout the first half. In the second half, an end-around play by the Wheeler Rainbows earned them six

points, but the conversion attempt failed.

Bulldog quarterback Tracy Aldrich put his tenm into motion and ventured deep into Wheeler territory. With second and goal to go, Aldrich scored on a quarterback keeper. The conversion was no good. Before either team could get an edge, time expired. Final score: Bulldogs, 6, Wheeler 6.

In the Pee Wee division Wheeler again got on the scoreboard first, but flubbed the conversion attempt. Two plays later Trojan S. Garcia exploded for a 35-yard scoring run to even the game at six before halftime.

Late in the second half, after holding each other motionless,

Wheeler's Steve Murden took a handoff from the quarterback and swept around the right end for a touchdown. Murden also scored the two-point conversion and Wheeler led 14-6. It stayed that way through the remainder of the game.

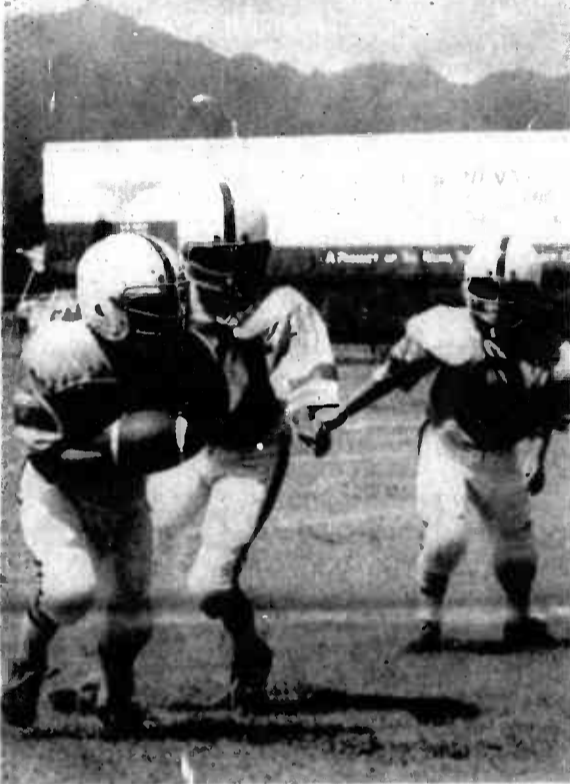
A 24-yard run by J.J. Celestine gave the Midget Trojans a 6-0 lead in their battle against Wheeler's Midgets.

The Trojans, regardless of only copping six points, had very little trouble out of their opponents as they held their lead to win their season opener.

The Bantams, the Air Station's fourth team, were idle.



HALFTIME REFRESHER — A Kaneohe Trojan takes a much-needed drink of water between halves.



HERE WE GO — Wheeler teammates get ready to make their move.



HURRAY TEAM! — Wheeler cheerleaders urge their team to victory.

Feel WONDERFUL & ALIVE With YOGA
Marilyn Studley School of Yoga — KAILUA —
Guidance by Marilyn Studley in the art of yoga postures, the science of breathing control, the art of concentration & relaxation. Lots of love, peace, energy, & vitality.
Morning & evening classes available 247-6621

LEEWARD TROPHIES
GIVE YOUR TROPHY BUDGET A BREAK!
*save time, money, gas
*plaques, ribbons, trophies, engraving
Phone: 677-3230 Mon.-Sat. 10-5
94-877 Farrington Hwy., Waipahu

WE BUY
•Gold •Dental Gold
•Silver •Platinum
•U.S. & Foreign Coins
•Diamonds •Watches
PRESTIGE
NOW IN TWO LOCATIONS
IN KANEOHE 247-8477 46-216 Kauhupa St.
IN HONOLULU 735-2368 746 Kauhupa Ave.
OPEN 9-5 DAILY; 9-12 SAT.

EXTENDED BY POPULAR DEMAND
LAST CHANCE
CAR TINTING
—ANY CAR—
FOR ONLY
\$98.95
•All legal colors available
•Reservations must be made this week for discount price
•Reg. \$135-\$175
•Please mention this Ad when making your reservation to assure your Special Price
LEGAL AUTO TINT
CALL TODAY 247-8583
Offer expires Oct. 18 46-1021 Kam Hwy., Kaneohe

PACIFIC SURPLUS & DISTRIBUTORS
Hawaii's only GAC store. GUARANTEES THE LOWEST PRICES IN HAWAII, due to their mainland buying power with 16 nationwide appliance stores.
CALL 262-8131
BACK BY POPULAR DEMAND FOR 5 DAYS ONLY
*HURRY OUR 2-WAY SPECIALTY SALE ENDS Sun., 10/4/5 pm
CEILING FAN HEADQUARTERS
NOW OPEN SUNDAYS 11-5
OUR GUARANTEE: If you find your fan advertised at a lower price within 30 days of purchase we'll refund the difference in cash.
Professional Fan Installation at reasonable prices!
SUMMER CLEARANCE
S.M.C. Sug. Retail 129* **\$58**
CASABELLA Sug. Retail 195* **\$218**
WE ARE ALSO YOUR **BERNINA** HEADQUARTERS
50% OFF For the wife or mom during Football season... There isn't a better time to buy than Now!
BERNINA
Features:
• Monograms
• Self-Adjusting Tension
• Open Arm
Sug. Retail **\$650**
Hurry! Limited Quantities
MODEL 800
• 25 yr. Exclusive Warranty
• Demo Model
• Zig Zag
NOW ONLY **\$325**
PACIFIC SURPLUS & DISTRIBUTORS
CALL NOW 262-8131 1247-F Pali Hwy
OPEN: Mon.-Sat. 10-6 pm, Wed. till 8 pm
Sundays 11-5 pm 44 block east of Castle Hospital in the 7-11 complex

Sportsnotes

In Hawaii Armed Service Athletic Council Volleyball Competition the Kaneohe women Marine's team overwhelmed the 25th Infantry women in two straight sets. Playing away at the Schofield Post Gym Sept. 23, the lady leathernecks defeated their opponents 15-5 in the first set and returned to "ice the cake" with a 15-2 victory.

Entry data for the Sixth Annual Marine Corps Marathon is now available at the Athletics Office. This Nov. 1 event will be held at the Marine Corps War Memorial in Arlington, Va.

Organizational meetings for the Intamural Bowling League are scheduled for Oct. 8 at 11:30 a.m. and 4 p.m. at the Station Theater Lobby. Unit representatives can now pick up command authorization forms at the Athletics Office.

The Hawaii Marine Gold Team, a group of Marine runners, took first place in the Arizona Memorial Relays, Sept. 20, finishing three minutes ahead of the second place team. The five-member team, Sergeant Robert Beyer, 1st Radio Battalion, Corporal Dennis Hairston, Commander-in-Chief, Pacific Fleet, Cpl Steve Van Guilder, 1st Battalion, 12th Marines, Cpl Tom Ray, Station Operation and Maintenance Squadron and Cpl Joe Flannery, of Camp Smith, completed the 28-mile run in 2:30:39.

The Varsity Boxing Team is still being formed and try-outs are 4 till 7 p.m. Monday through Friday at the Field House in Kaneohe near Windward Community College.

Naval Station, Pearl Harbor will sponsor whaleboat races and Navy Olympics Team events Oct. 10, in support of their birthday celebration. The olympics will emphasize team sports with motor whaleboat races, heaving line tosses, relay races and a tugs-of-war. The motor whaleboat race will be held at Merry Point Landing at 9 a.m., with the remaining events kicking off at the Ward Field thereafter. For more information contact Harry Carnavas at 471-3169 or Rodney Gouveia at 474-1198.

First Radio Battalion's Operations control and Analysis Platoon is sponsoring the first Scotch Doubles Bowling Tournament at the Pali Lanes in Kailua Friday. Entry is limited to 120 people with the cost at \$5 per person. Teams will be drawn at the bowling alley. The format for the tournament is: first game, nine pins by first ball is a strike; second game, frames three, six and nine are strikes and third game, a split on first ball is a strike. Each team will consist of two people. First bowler will throw his ball and his partner will pick up the spare. For more information contact Staff Sergeant Jim Roberts at 257-3573.

The Department of Land and Natural Resources announced that the Special Control Hunting season for feral pigs, goats and axis deer ends today on the Island of Molokai. Termination of the land lease agreement by the cooperator for Pau O Hoku Ranch prevents the Department from continuing the Special Hunting Program, and providing unrestricted public access to the State Forest Reserve Lands. Hunters that have qualified for axis deer tags are reminded that all unused tags must be returned to the Division of Forestry and Wildlife at the closure of the season.

For more information, contact the Division of Forestry and Wildlife offices at 244-4352 in Maui or 548-3898 in Honolulu.

Organizational meetings for the Intramural Basketball League will be Oct. 15 at 11:30 a.m. and 4 p.m. in the Station Theater Lobby. The league starts Nov. 2 and games will be played occasionally on Saturdays and Sundays.

The All-Marine and Interservice Racquetball calendar has been changed from February to September for 1982. Consequently, the two intramural programs will be delayed until January and July.

The University of Hawaii's accounting fraternity, Beta Alpha Psi, is inviting the Marines to participate in the BAP Scholarship Fun Run Oct. 11 starting 7:30 a.m. at Kennedy Theater on the University of Hawaii campus. Unofficial times will be recorded for the three divisions of runners; male, female and mixed teams. Each team consisting of 4 runners will complete 12 miles. Awards will be given to the first place finishers in each division but everybody gets a T-shirt. Entry forms must be completed by all team members and mailed with a \$24 payment to: Beta Alpha Psi Scholarship Run, c/o Beta Alpha Psi, 2499 Halekoa Drive, Honolulu, HI 96821. For more information contact Peter Lenhart at 261-9184.

Feeling smart?

Education Programs what does the Corps offer?

Formal programs?

College programs?

Correspondence courses?

Good questions!

For good answers...

see your Career Planner... he can do you some good.

Today's unique new way to communicate. Don't just write. **BLACKMAIL** Someone you care for. They will love you for it.

AVAILABLE IN FOUR DIFFERENT STYLES

BLACKMAIL STATIONERY, AVIGNETTE AND PORTRAIT CO. • 1981 OVID P. ADAMS P.O. BOX 3926, HONOLULU, HAWAII 96813

\$12 COUPON
For First Plasma Donation
NEW Donors Only!

GET DOWN TO ALPHA

Alpha
PLASMA CENTERS
3179 KOAPAKA
BEHIND AIRPORT RAMADA INN
Ph. 836-0647

EARN AT LEAST \$17 EVERY WEEK DONATING LIFE-GIVING PLASMA. IT'S AN EASY WAY TO HELP OTHERS WHILE HELPING YOURSELF.

Our Hours Have Been Changed Just For You!
M-F 10-6:00 p.m. Sat 8-2 p.m. Closed Sun.

JAMES PAPAYOANOU, D.D.S.
is pleased to announce the opening of his office for the practice of

ORAL & MAXILLOFACIAL SURGERY
Office hours by appointment

Kailua Medical Arts Bldg. 407 Uluniu St., Suite 204 262-6961
Haleiwa Family Medical Ctr. 66-125 Kam Hwy., Suite 2 637-9652

If no answer, call 524-2575 Physicians Exchange

Alan Line
Now Working with

Susan Beers Salon Inc.
116C Hekili St., Kailua
Call 261-8571

7-ELEVEN SAVES YOU MONEY WHERE YOU SAVE TIME

COLD BEER \$8.99
at Super Low CASE Prices

LOWENBRAU \$12.99
MICKEYS BIG MOUTH \$10.99
BUDWEISER \$10.99

EVERYDAY LOW PRICES

CIGARETTES ALL BRANDS \$6.19
Only CARTON
EVERYDAY LOW PRICE

ICE COLD SOFT DRINKS \$8.99
CASE
EVERYDAY LOW PRICE

THE DAIRY STORE MILK 1/2 Gal. \$1.65
EVERYDAY LOW PRICE

BIG DEAL ON BIG GUP 49¢
32 Ice Cold Fluid Ounces
OPEN 24 HOURS EVERYDAY
Specials good 10/1 thru 10/13/81

ANNOUNCING A Scientific breakthrough in moisturizing & reconstructing excessively curly hair to give you smooth, wavy, or curly styles.

New Era soft body curl.
with acid-balanced pre-soothing moisturizing gel Gives excessively curly hair unbelievable control and sheen.

OCTOBER SPECIAL \$10.00 OFF
CALL LU AT 261-1131

Exchange Savings!

One Free 8x10 KODAK Color Enlargement

PAY FOR TWO, THE THIRD IS FREE!

- Bring in your favorite Kodacolor film negatives, color slides or color prints.
- Get three 8 x 10 KODAK Color Enlargements for the price of two.
- Big, bright prints are excellent for framing.
- Hurry, offer ends October 14, 1981.

See your Exchange Service
This advertisement was neither paid for, nor sponsored in whole or in part, by the Exchange Service.

Paradise Pastimes

BEYOND THE GATES — Live Bavarian music, authentic German food and an inexhaustible supply of imported beer and wine will mark the Hale Koa's annual Oktoberfest celebration Oct. 1, 2, and 3. The Banyan Tree Room will be transformed into an old-world Bavarian Tavern.

Tickets are \$4 and are available starting today at the Hale Koa Activities Desk (daily 8 a.m. till 4 p.m.) and at all Military Ticket Outlets.

WITHIN THE GATES — Armed Services YMCA Outreach will be sponsoring a program **How To Prevent Poverty** presented by Millie Graham, Navy Relief Budget Counselor Oct. 7, from 9 to 11 a.m. The program, which is part of the weekly Women's Awareness Program, will be held in Building 455 at MCAS, Kaneohe Bay.

Child care and transportation are available. To make reservations call Armed Services YMCA Outreach at 254-4719/4965.

CHEAPSHOTS— Ships from two different Navy's will be open for tours Oct. 3 for the

monthly Visit Ship program at Pearl Harbor.

The masted sailing ship from Ecuador, the Guayas will be open for visitation Saturday and Sunday from 1 p.m. till 4 p.m. and the U.S. Navy ship the USS Robert E. Peary, named after the polar explorer, will also be open, Saturday only for free guided tours from noon until 4 p.m.

The Robert E. Peary a modern war ship, is the third ship in the history of the U.S. Navy to be named in honor of Rear Admiral Peary.

The Ecuadorian ship the Guayas is a training ship with midshipmen aboard, currently being trained for seamanship. Ships of the Guayas class date as far back as 1898 when they were used during the Spanish American War.

The U.S. Navy rock band "Tsunami" will also be performing, pier-side of the ships from 2 p.m. till 3 p.m., Saturday.

Reservations are not required and ample free parking is available near the ship. Large groups are also welcome. A shuttle bus from downtown and the Arizona Memorial Visitors Center is also available by calling 947-5015.



Oktoberfest

SEPTEMBER...1981

GOOD YEAR SALE ON STEEL ...IMPORT SIZES



ARRIVA RADIALS
\$39.95

- VALUE** — Even Its Footprint Tells You It's Different
- VALUE** — Gas-saving steel belted radial construction
- VALUE** — All-season year-round traction & performance
- VALUE** — Easy-rolling, long-wearing tread compound
- VALUE** — Stamina for front or rear wheel drive cars

Blackwall Size	Also Fits	SALE PRICE	Plus FET No trade needed
P155-80R13	155R13	\$44.05	\$1.51
P165-80R13	165R13	\$46.80	\$1.68
P165-80R15	165R15	\$47.70	\$1.62
P175-70R13	175-70R13	\$50.45	\$1.61
P185-70R13	185-70R13	\$52.30	\$2.03
P185-70R14	185-70R14	\$55.05	\$1.82

Other Import Sizes Sale Priced Too!

HURRY! Sale Ends October 3!

RAIN CHECK — If we sell out of your size we will issue you a rain check, assuring future delivery at the advertised price.

Custom Polysteel — Low Priced

Low, Low Prices On These Polysteel Whitewall Sizes Too!

Whitewall Size	Also Fits	LOW PRICE	Plus FET And old tire.
P195-75R14	DR78-14	\$64	\$2.26
P205-75R15	FR78-15	\$64	\$2.50
P215-75R15	GR78-15	\$75	\$2.64
P225-75R15	HR78-15	\$77	\$2.85

\$47

(Depending on availability) WHITEWALL plus \$1.99 or \$1.91 FET And old tire

Custom Polysteel — The Radial That Keeps Its Feet Even In The Rain!

- Gas-saving radial-ply construction
- Strength and penetration resistance of steel cord belts



NOW ON SALE. FOR PICKUPS, VANS, CAMPERS AND RV'S

<p>FOR SURE-FOOTED TRACTION ALL YEAR ROUND — ASK FOR TRACTION SURE-GRIP</p> <p>\$6100 \$8040</p> <p>700-15 TT blackwall, Load Range C, plus \$3.15 FET. No trade needed.</p>	<p>FOR HEAVY DUTY STRENGTH, PLUS LOW COST MILEAGE — ASK FOR RIB H-MILER</p> <p>\$5100 \$6985</p> <p>700-15 TT blackwall, Load Range C, plus \$2.77 FET. No trade needed.</p>
--	--

DON'T WAIT, SALE DEADLINE IS OCTOBER 3.

ANNIVERSARY SERVICE SALE!

SAVE 25%

ON SELECTED SERVICE PLEASE CALL FOR DETAILS & APPOINTMENT

GOOD YEAR Just Say "Charge It" Goodyear Revolving Charge Account

SEE YOUR INDEPENDENT DEALER FOR HIS PRICE AND CREDIT TERMS. SERVICE AND CREDIT TERMS AS SHOWN AT GOODYEAR SERVICE STORES IN ALL COMMUNITIES SERVED BY THIS NEWSPAPER. SERVICES NOT AVAILABLE AT ALL STORE LOCATIONS.

KANEOHE BAY SHOPPING CENTER Phone: 247-6668

Store Hours: Mon-Fri 7:30 am-6:00 pm Sat 7:30 am-5:00 pm Sun 10:00 am-5:00 pm

Manager: Phillip G. Smith

Start Building for the Future U.S. SAVINGS BONDS

UNION BUILDING MATERIALS

MAIN STORE
512 ALA MOANA BLVD.
#523-6969 #537-3324
MON.-SAT. 7:00-5:00 SUN. 8:00-12:00

AIKAHI STORE
AIKAHI PARK SHOPPING CENTER
#254-3517
MON.-SAT. 7:30-8:30 SUN. 8:30-5:00

SALE BEGINS 9-30 — ENDS 10-6

ACE EXTERIOR ACRYLIC LATEX HOUSE PAINT **ACE EXTERIOR STAINS**

WHITE #103-101 ALSO INCLUDES ASSTD. PRE-MIXED COLORS

REG. \$16.83 GAL. SALE **\$12.59**

CUSTOM COLORS SALE **\$13.59**

REG. \$15.99 GAL. SALE **\$9.99**

BLACK FLAG ANT & ROACH KILLER **SPARKLE GLASS CLEANER** **BRECK SHAMPOO**

11 OZ. REG. \$2.39 SALE **\$1.79** (AIKAHI ONLY)

16 OZ. REG. \$1.49 SALE **89¢**

15 OZ. REG. \$2.77 SALE **\$1.99** (AIKAHI ONLY)

ARRID ROLL-ON ANTI-PERSPIRANT **BIOX RUSTPROOFING**

6 OZ. REG. \$1.59 SALE **95¢** (AIKAHI ONLY)

8 oz. REG. 6.49 SALE **4.99**

16 oz. REG. 10.99 SALE **8.49**

BIOX RUST REMOVER

8 oz. REG. 5.99 SALE **4.49**

16 oz. REG. 9.99 SALE **7.49**

20 TINE METAL GARDEN RAKE **GENEAL ELECTRIC 48" FLUORESCENT BULB**

REG. \$4.09 SALE **\$3.09** (AIKAHI ONLY)

#F40CW REG. \$2.73 SALE **\$1.85**

SAKRETE MORTAR MIX REG. \$5.79 SALE **\$4.19**

RAINBIRD OSCILLATING SPRINKLER #0-17 **SUNNYSIDE GASOLINE STOVE & LANTERN FUEL**

WATERS 2800 SQ. FT. REG. \$13.29 SALE **\$7.69** (AIKAHI ONLY)

#118 REG. \$11.99 SALE **\$8.79**

REG. \$5.79 GALLON SALE **\$4.49** GAL. (AIKAHI ONLY)

WEED & FEED FERTILIZER **KINGSFORD MATCH LIGHT CHARCOAL** **KINGSFORD CHARCOAL**

10-6-4 18 LBS. COVERS 5000 SQ. FT. REG. \$8.29 SALE **\$6.49** (AIKAHI ONLY)

8 LBS. REG. \$3.49 SALE **\$2.79**

10 LBS. REG. \$3.09 SALE **\$2.59**

RIVAL CROCK POT SLOW COOKER **CORRUGATED ROOFING PANELS 26" WIDE**

5 QT. #3350 REG. \$31.77 SALE **\$27.77**

	8'	10'	12'
FIBERGLASS 2.5 oz.	REG. 7.65 SALE 4 ⁹⁵	REG. 9.55 SALE 6 ¹⁹	REG. 11.45 SALE 7 ⁴⁹
ALUMINUM .021	REG. 20.90 SALE 14 ⁹⁵	REG. 26.00 SALE 18 ⁹⁵	REG. 31.20 SALE 22 ⁹⁵
GALVANIZED 26 gauge	REG. 21.60 SALE 15 ⁴⁹	REG. 27.00 SALE 19 ⁴⁹	REG. 32.40 SALE 23 ⁴⁹

REDWOOD AT SPECTACULAR SAVINGS 1/2 OFF!

KILN DRIED—DEE GRADE USE FOR SHELVING, FENCING, PICNIC TABLES, & MANY OTHER USES

REG.	SALE	REG.	SALE
1"x4"x6'	\$4.40 \$2.20	1"x10"x8'	\$11.00 \$5.50
1"x4"x8'	\$6.60 \$3.30	1"x12"x8'	\$13.20 \$6.60
1"x6"x6'	\$6.60 \$3.30	2"x8"x6'	\$13.20 \$6.60
1"x6"x8'	\$8.80 \$4.40	2"x8"x8'	\$17.60 \$8.80
1"x8"x6'	\$8.80 \$4.40	2"x10"x8'	\$22.00 \$11.00

LANDSCAPING SPECIALS!

RAILROAD TIES . . . 6"x8"x8' REG. \$35.00 SALE **\$14.95**

APPROX. 4"x4"x6' ROUGH HEM FIR REG. \$3.20 SALE **\$1.50**

COME & SEE US FOR ALL YOUR LUMBER NEEDS!

APPLIANCES DRUGS ROOFING DRYWALL TOOLS STATIONERY TOOLS APPLIANCES DRUGS

HOUSEWARES PANELING LUMBER PLYWOOD DRYWALL ROOFING PANELING TOOLS SUPPLIES

Localmotion

K-BAY OFFICERS' CLUB
TODAY — Lunch in the Pacific Room from 11 a.m. till 1 p.m. features special, hot carved sandwiches, soup and salads. Mongolian barbecue on the Lower Lanai from 6 till 8:30 p.m.

THURSDAY — Lunch in the Pacific Room from 11 a.m. till 1 p.m. Beefeaters Nite from 6 till 8:30 p.m. featuring steamship round, a seafood item, rice or potatoes, vegetable and a salad bar.

FRIDAY — Lunch in the Pacific Room from 11 a.m. till 1 p.m. Happy Hour in the Tapa Bar from 4:30 till 6:30 p.m. Mongolian barbecue on the Lower Lanai from 6 till 9 p.m. "Country Lace" plays in the Tapa Bar from 8:30 p.m. till 12:30 a.m.

SATURDAY — King crab and hotel round of beef with salad bar, rice, potatoes, vegetable, rolls, coffee and iced tea.

SUNDAY — Champagne Brunch in the Pacific Room from 10 a.m. till 1 p.m. with a variety of breakfast specials and a complimentary glass of champagne. In the evening, Prime Rib Buffet with all the trimmings.

MONDAY — Lunch in the Pacific Room from 11 a.m. till 1 p.m. Join us Monday through Friday for lunch specials, hot carved sandwiches, soup and salads. Monday evening the dining room is closed. During football season, the Tapa Bar will open from 4:30 till 8 p.m. Half Time prices will mean one-half off on all drinks.

TUESDAY — Lunch in the Pacific Room from 11 till 1 p.m. Tuesday evening the dining room is closed. The Tapa Bar opens from 4 till 10 p.m. Happy Hour from 4:30 till 6:30 p.m. Pupus and popcorn are available at the bar.

K-BAY SNCO CLUB
TODAY — Luncheon special is beef stroganoff. Family Night Buffet is served from 5:30 till 8:30 p.m.

THURSDAY — Luncheon special is veal patties. Mongolian barbecue is served from 5:30 till 8:30 p.m. "Mohair" plays from 7:30 till 10:30 p.m.

FRIDAY — Luncheon special is fish and chips. Aloha Happy Hour is from 4 till 6 p.m. Candlelight dining featuring peel and eat shrimp are served from 6 till 9 p.m. "Wood Rose" plays from 9 p.m. till 1 a.m.

SATURDAY — Prime rib and crab is served from 6 till 9 p.m. "Dave West" plays from 9 p.m. till 1 a.m.

SUNDAY — Buffet Brunch is served from 10 a.m. till 1 p.m. Cook your own steak over a charcoal grill from 4 till 7 p.m.

MONDAY — Luncheon special is Mexican plate. Happy Hour is from 5 till 6 p.m.

TUESDAY — Luncheon special is meatloaf. Happy Hour is from 5 till 6 p.m.

WINDWARD ENLISTED CLUB

TODAY — Lunch from 11 a.m. till 1 p.m. Dining room opens from 5 till 8 p.m. Enjoy a meal off our new menu. D.J. in the Moongate

Lounge and "Kit Carson and Hurricane" play in the Ballroom from 7:30 till 11:30 p.m.

THURSDAY — Lunch from 11 a.m. till 1 p.m. Dining room opens from 5 till 8 p.m. D.J. in the Moongate Lounge and "Country Lace" plays in the Ballroom from 7:30 till 11:30 p.m.

FRIDAY — Lunch from 11 a.m. till 1 p.m. Dining room opens from 5 till 9 p.m. with a prime rib special and a prime rib and crab special. D.J. in the Moongate Lounge and "Black Widow" plays in the Ballroom from 8 till midnight.

SATURDAY — Dining room opens from 5 till 9 p.m. with a prime rib special and prime rib and crab special. D.J. in the Moongate Lounge and "Rock 'n' Roll Movies" in the Ballroom from 8 p.m. till midnight.

SUNDAY — Club opens at 2 p.m. with the Bar serving sandwiches. Dining room opens from 5 till 8 p.m.

MONDAY — Lunch from 11 a.m. till 1 p.m. Dining room opens from 5 till 8 p.m. with Italian Nite featuring all the spaghetti you can eat. Monday Night Football with free popcorn and happy hour prices from 6:30 till 8:30 p.m.

TUESDAY — Lunch from 11 a.m. till 1 p.m. Dining room opens from 5 till 8 p.m. with an all you can eat smorgasbord. D.J. and Video in the Moongate Lounge from 7:30 till 11:30 p.m.

we care...

we share.



Kaneohe Travel Agency, Inc.
 Phone 247-2113

OAHU GOLF TOURNAMENT ON KAUAI
 24-25 OCTOBER 1981
\$1500*

INCLUDES:

- 18 HOLES AT KAUAI GOLF COURSE
- GREEN FEES
- GOLF CART
- SATURDAY NIGHT DINNER
- DOUBLE OCCUPANCY

• ROUND TRIP AIR FARE
 • ONE NIGHT AT KAUAI RESORT
 • COMPACT CAR
 • 18 HOLES AT WAILUA GOLF COURSE

Mon. thru Sat. 9-5 p.m.
 Windward City Shopping Center

ATC & IATA Approved License #XTRAG0053

Stay Marine.

MYODONTIC DENTURES

For those people who want superior dentures, we highly recommend this method. We are getting excellent results and they eliminate most of the conventional denture problems.



Kailua Professional Ctr. Suite 503

WINDWARD DENTAL GROUP INC. Lee Hardy, D.D.S. 261-4694



CHARGE IT BEEF SALE

WE ACCEPT USDA FOOD STAMPS

LOOK!

FREE! 50 PORK CHOPS
 FREE! 20 lb. Grade A FRYERS with purchase

10% Discount To Gov't & Military Employees

USDA CHOICE BEEF HINDS & Roast Section 100 Lbs. \$89

for only T-BONE, SIRLOIN, PORTERHOUSE, ROUND STEAK, RUMP, RST, SIRLOIN TIP RST, EYE OF ROUND RST, GROUND BEEF - STEW MEAT AND MUCH MORE

Example 100 lbs. of 80% L.B. Avg. Wt. 100-250 lbs.

NO MONEY DOWN 3 MONTHLY PAYMENTS SAME AS CASH NO INTEREST NO CARRYING CHARGES ADDED PAYMENTS STARTS 30 DAYS FROM PURCHASE!

DOUBLE GUARANTEE

Cut & Wrapped 15'

D&L MEAT CO.

HOURS: MON-FRI 10-8 SAT. 10-4 SUN. 10-8

638 N. King St. Honolulu, Hawaii 841-5851

Select Beef 268-389

BIB'S
 Family Restaurant

THIS WEEK'S DINNER SPECIAL

Bib's Fish Platter for Two Tempura Style. Crispy golden brown breaded fish filets served with plenty of natural skin-on fries, and your choice of soup or salad. A delicious platter not to be missed. **\$10.35** (for two)

OPEN 7 DAYS A WEEK

- BREAKFAST 7 to 11 a.m. (Sun. 7 a.m. to 1 p.m.)
- LUNCH 11 a.m. to 5 p.m.
- DINNER 5 p.m. to 9 p.m.

315 Uluniu St., Kailua Square Phone 261-8724

SAFEWAY

Where Everything's Right Including The Price

<p>SIRLOIN STEAKS (Bone In) Safeway Quality Beef. Broil or BBQ</p> <p>LB. \$3.49</p>	<p>PORK CHOPS Assorted Ends & Centers</p> <p>LB. \$2.09</p>	<p>PATTI JEAN FRYERS Frozen Government Inspected</p> <p>LB. 67¢</p>	<p>Large Eggs Lucerne Grade A Mainland Shelltreated</p> <p>Dozen \$1.17</p>	<p>Top Ramen 3 oz.</p> <p>3/\$1</p>
<p>CROSSRIB ROASTS Boneless Safeway Quality Beef, Pot or Oven Roasts</p> <p>LB. \$3.09</p>	<p>TURKEY HINDS All Dark Meat, Excellent Value</p> <p>LB. \$2.09</p>	<p>LEG OF LAMB New Zealand Frozen, Whole or Half</p> <p>LB. 79¢</p>	<p>Minestrone Soup Riviera 20 oz.</p> <p>59¢</p>	<p>Cheerios 10 oz.</p> <p>\$1.19</p>
<p>RIB STEAKS Small End From Safeway Quality Beef</p> <p>LB. \$3.98</p>	<p>SPARERIBS small Lean Sides</p> <p>LB. \$1.98</p>	<p>HONEYDEWS U.S. NO. 1 RIPE, SWEET (SAVE 20c LB.)</p> <p>LB. 29¢</p>	<p>BARTLETT PEARS U.S. NO. 1 LARGE SIZE (SAVE 24c LB.)</p> <p>LB. 45¢</p>	<p>FRESH CARROTS U.S. NO. 1 (SAVE 77c)</p> <p>3 LBS. \$1</p>
<p>CHIQUITA BANANAS U.S. NO. 1 GOLDEN RIPE (SAVE 30c LB.)</p> <p>LB. 49¢</p>	<p>Crisco Shortening 3 lb.</p> <p>\$2.49</p>	<p>Orange Juice Minute Maid Frozen 12 oz.</p> <p>\$1.49</p>	<p>King Size Bread Love's or Holsum 1 lb.</p> <p>69¢</p>	<p>Mushrooms Button Patrico 4 oz.</p> <p>59¢</p>

Station and prices in this ad are effective Sept. 29 thru Oct. 5, 1981

840 Ala Lani Dr. Honolulu 801-227-8888
 1175 S. Beretani Dr. Honolulu 833-4444
 1000 Ala Moana Blvd. Honolulu 833-4444



Consumer's Choice

For many consumers who are familiar only with mortgage rates remaining the same during the life of the mortgage, the new Adjustable Mortgage Loans may come as a shock.

THERE HAS BEEN something comforting about knowing that, no matter what, the mortgage payment was a fixed expense. Mortgage rates kept ticking away at their accustomed rates (five or six percent in the '60s and seven or eight percent in the early '70s) in spite of 15 years of rapid inflation which escalated consumers' other costs — and their incomes in most cases. It is no wonder that mortgage lenders are now reluctant to make loans that commit their resources for 25 or 30 years.

been made that AMLs are not good for the consumers during inflationary periods when interest rates fluctuate so fast and increased monthly mortgage payments could result in massive foreclosures. However, the effect of long-term fixed mortgage rates is that the rates paid by current borrowers must subsidize long-term mortgages at lower rates granted years ago.

THERE ARE signs that banks will voluntarily set limits to the amount of change, the frequency of change, and the maximum amount of change in monthly payments. The market will demand that such assurances be included in a bank's mortgage offerings.

If mortgage lending money remains avail-

able to us, there has to be a profit incentive in times of high interest rates as well as low, and yet consumers must pay a competitive rate if mortgage loans are going to be within reach.

HERE ARE SOME highlights of the AML rule put into effect April 30:

• Although there are no limits in periodic interest rate adjustments, the adjustment must be based upon the movement of an interest rate "index." Among the indices the Board has suggested are three-month and six-month Treasury bill auction rates and the national average contract mortgage rate for the purchase of existing homes.

If the index goes up, the lender may increase the amount the

index goes up, but if the index goes down, the lender must decrease the interest rate correspondingly. The lender may also decrease the interest rate voluntarily.

• The lender must give an AML borrower a disclosure form with an AML application. The form must describe the adjustable elements of the loan, its key terms, and an example of how it will work.

• The lender must notify the borrower of interest rate adjustments at least 30 days but not more than 45 days before the adjustment dates.

• Borrowers may not be penalized for loan prepayments. This prohibition is intended to provide borrowers maximum flexibility to look for more favorable financing sources during the

term of an AML. The term may never exceed 40 years.

The new regulation does not affect Graduated Payment Adjustable Mortgages (primarily for younger people who expect to have greater earnings in the future) or Reverse Annuity Mortgages (primarily for older people where the equity in a dwelling is used to let the owners live in their homes until they die or decide to sell their interest).

TIME WILL TELL how useful and popular these new mortgage instruments will be. In the meantime, if you are looking for mortgage money, make sure you shop around or understand the loan agreements being offered you, and know if, when, and how much the payments can be changed.



CALL TODAY

235-5881 or 622-3966

Hello! Yes, we're no. 1 when you've got something to sell.

<p>• 10 CEMETERY PLOTS HAWAII Memorial Park, cemetery plot \$1000. Call 668-1194 or 262-9806 ask for Helen.</p> <p>• 15 ANNOUNCEMENTS SAILING Kaneohe Bay sailboat picnics, spratly swing, inter-island also. Windward Sea, 235-2984.</p> <p>• 20 LOST & FOUND FOUND: Near CINC PAC Fleet headquarters near alda gate school ring, maybe white gold, loser may claim by describing. Call 839-6164 anytime.</p> <p>• 25 PERSONALS DARE to go bare, Nudist Park information & free visit, write P.O. Box 8417, Hiron, HI, 96815.</p>	<p>• 35 PROFESSIONAL SERVICES PAINLESS CHIROPRACTIC FREE EXAM CALL Dr. Bart Smith at 526 0426</p> <p>• 45 SCHOOLS & TRAINING SPELL WITH PHONICS IMPROVE READING Easy Phonics Method Beginning remedial reading Grammar composition 1st level & Adult Individual tutoring Qualified experienced reasonable 262-7242</p> <p>• 50 BUSINESS OPPORTUNITIES THE GLASS SHACK, 25 yr. old, cottage co., manuf. glass & resin gifts, \$7500 incis glass, work counters, machinery & active accounts & instruction. Call 261-3918.</p>
--	--

<p>• 15 ANNOUNCEMENTS SAILING Kaneohe Bay sailboat picnics, spratly swing, inter-island also. Windward Sea, 235-2984.</p> <p>• 20 LOST & FOUND FOUND: Near CINC PAC Fleet headquarters near alda gate school ring, maybe white gold, loser may claim by describing. Call 839-6164 anytime.</p> <p>• 25 PERSONALS DARE to go bare, Nudist Park information & free visit, write P.O. Box 8417, Hiron, HI, 96815.</p>	<p>• 35 PROFESSIONAL SERVICES PAINLESS CHIROPRACTIC FREE EXAM CALL Dr. Bart Smith at 526 0426</p> <p>• 45 SCHOOLS & TRAINING SPELL WITH PHONICS IMPROVE READING Easy Phonics Method Beginning remedial reading Grammar composition 1st level & Adult Individual tutoring Qualified experienced reasonable 262-7242</p> <p>• 50 BUSINESS OPPORTUNITIES THE GLASS SHACK, 25 yr. old, cottage co., manuf. glass & resin gifts, \$7500 incis glass, work counters, machinery & active accounts & instruction. Call 261-3918.</p>
---	--

<p>• 15 ANNOUNCEMENTS SAILING Kaneohe Bay sailboat picnics, spratly swing, inter-island also. Windward Sea, 235-2984.</p> <p>• 20 LOST & FOUND FOUND: Near CINC PAC Fleet headquarters near alda gate school ring, maybe white gold, loser may claim by describing. Call 839-6164 anytime.</p> <p>• 25 PERSONALS DARE to go bare, Nudist Park information & free visit, write P.O. Box 8417, Hiron, HI, 96815.</p>	<p>• 35 PROFESSIONAL SERVICES PAINLESS CHIROPRACTIC FREE EXAM CALL Dr. Bart Smith at 526 0426</p> <p>• 45 SCHOOLS & TRAINING SPELL WITH PHONICS IMPROVE READING Easy Phonics Method Beginning remedial reading Grammar composition 1st level & Adult Individual tutoring Qualified experienced reasonable 262-7242</p> <p>• 50 BUSINESS OPPORTUNITIES THE GLASS SHACK, 25 yr. old, cottage co., manuf. glass & resin gifts, \$7500 incis glass, work counters, machinery & active accounts & instruction. Call 261-3918.</p>
---	--

<p>• 15 ANNOUNCEMENTS SAILING Kaneohe Bay sailboat picnics, spratly swing, inter-island also. Windward Sea, 235-2984.</p> <p>• 20 LOST & FOUND FOUND: Near CINC PAC Fleet headquarters near alda gate school ring, maybe white gold, loser may claim by describing. Call 839-6164 anytime.</p> <p>• 25 PERSONALS DARE to go bare, Nudist Park information & free visit, write P.O. Box 8417, Hiron, HI, 96815.</p>	<p>• 35 PROFESSIONAL SERVICES PAINLESS CHIROPRACTIC FREE EXAM CALL Dr. Bart Smith at 526 0426</p> <p>• 45 SCHOOLS & TRAINING SPELL WITH PHONICS IMPROVE READING Easy Phonics Method Beginning remedial reading Grammar composition 1st level & Adult Individual tutoring Qualified experienced reasonable 262-7242</p> <p>• 50 BUSINESS OPPORTUNITIES THE GLASS SHACK, 25 yr. old, cottage co., manuf. glass & resin gifts, \$7500 incis glass, work counters, machinery & active accounts & instruction. Call 261-3918.</p>
---	--

<p>• 15 ANNOUNCEMENTS SAILING Kaneohe Bay sailboat picnics, spratly swing, inter-island also. Windward Sea, 235-2984.</p> <p>• 20 LOST & FOUND FOUND: Near CINC PAC Fleet headquarters near alda gate school ring, maybe white gold, loser may claim by describing. Call 839-6164 anytime.</p> <p>• 25 PERSONALS DARE to go bare, Nudist Park information & free visit, write P.O. Box 8417, Hiron, HI, 96815.</p>	<p>• 35 PROFESSIONAL SERVICES PAINLESS CHIROPRACTIC FREE EXAM CALL Dr. Bart Smith at 526 0426</p> <p>• 45 SCHOOLS & TRAINING SPELL WITH PHONICS IMPROVE READING Easy Phonics Method Beginning remedial reading Grammar composition 1st level & Adult Individual tutoring Qualified experienced reasonable 262-7242</p> <p>• 50 BUSINESS OPPORTUNITIES THE GLASS SHACK, 25 yr. old, cottage co., manuf. glass & resin gifts, \$7500 incis glass, work counters, machinery & active accounts & instruction. Call 261-3918.</p>
---	--

<p>• 15 ANNOUNCEMENTS SAILING Kaneohe Bay sailboat picnics, spratly swing, inter-island also. Windward Sea, 235-2984.</p> <p>• 20 LOST & FOUND FOUND: Near CINC PAC Fleet headquarters near alda gate school ring, maybe white gold, loser may claim by describing. Call 839-6164 anytime.</p> <p>• 25 PERSONALS DARE to go bare, Nudist Park information & free visit, write P.O. Box 8417, Hiron, HI, 96815.</p>	<p>• 35 PROFESSIONAL SERVICES PAINLESS CHIROPRACTIC FREE EXAM CALL Dr. Bart Smith at 526 0426</p> <p>• 45 SCHOOLS & TRAINING SPELL WITH PHONICS IMPROVE READING Easy Phonics Method Beginning remedial reading Grammar composition 1st level & Adult Individual tutoring Qualified experienced reasonable 262-7242</p> <p>• 50 BUSINESS OPPORTUNITIES THE GLASS SHACK, 25 yr. old, cottage co., manuf. glass & resin gifts, \$7500 incis glass, work counters, machinery & active accounts & instruction. Call 261-3918.</p>
---	--

<p>• 15 ANNOUNCEMENTS SAILING Kaneohe Bay sailboat picnics, spratly swing, inter-island also. Windward Sea, 235-2984.</p> <p>• 20 LOST & FOUND FOUND: Near CINC PAC Fleet headquarters near alda gate school ring, maybe white gold, loser may claim by describing. Call 839-6164 anytime.</p> <p>• 25 PERSONALS DARE to go bare, Nudist Park information & free visit, write P.O. Box 8417, Hiron, HI, 96815.</p>	<p>• 35 PROFESSIONAL SERVICES PAINLESS CHIROPRACTIC FREE EXAM CALL Dr. Bart Smith at 526 0426</p> <p>• 45 SCHOOLS & TRAINING SPELL WITH PHONICS IMPROVE READING Easy Phonics Method Beginning remedial reading Grammar composition 1st level & Adult Individual tutoring Qualified experienced reasonable 262-7242</p> <p>• 50 BUSINESS OPPORTUNITIES THE GLASS SHACK, 25 yr. old, cottage co., manuf. glass & resin gifts, \$7500 incis glass, work counters, machinery & active accounts & instruction. Call 261-3918.</p>
---	--

<p>• 15 ANNOUNCEMENTS SAILING Kaneohe Bay sailboat picnics, spratly swing, inter-island also. Windward Sea, 235-2984.</p> <p>• 20 LOST & FOUND FOUND: Near CINC PAC Fleet headquarters near alda gate school ring, maybe white gold, loser may claim by describing. Call 839-6164 anytime.</p> <p>• 25 PERSONALS DARE to go bare, Nudist Park information & free visit, write P.O. Box 8417, Hiron, HI, 96815.</p>	<p>• 35 PROFESSIONAL SERVICES PAINLESS CHIROPRACTIC FREE EXAM CALL Dr. Bart Smith at 526 0426</p> <p>• 45 SCHOOLS & TRAINING SPELL WITH PHONICS IMPROVE READING Easy Phonics Method Beginning remedial reading Grammar composition 1st level & Adult Individual tutoring Qualified experienced reasonable 262-7242</p> <p>• 50 BUSINESS OPPORTUNITIES THE GLASS SHACK, 25 yr. old, cottage co., manuf. glass & resin gifts, \$7500 incis glass, work counters, machinery & active accounts & instruction. Call 261-3918.</p>
---	--

<p>• 15 ANNOUNCEMENTS SAILING Kaneohe Bay sailboat picnics, spratly swing, inter-island also. Windward Sea, 235-2984.</p> <p>• 20 LOST & FOUND FOUND: Near CINC PAC Fleet headquarters near alda gate school ring, maybe white gold, loser may claim by describing. Call 839-6164 anytime.</p> <p>• 25 PERSONALS DARE to go bare, Nudist Park information & free visit, write P.O. Box 8417, Hiron, HI, 96815.</p>	<p>• 35 PROFESSIONAL SERVICES PAINLESS CHIROPRACTIC FREE EXAM CALL Dr. Bart Smith at 526 0426</p> <p>• 45 SCHOOLS & TRAINING SPELL WITH PHONICS IMPROVE READING Easy Phonics Method Beginning remedial reading Grammar composition 1st level & Adult Individual tutoring Qualified experienced reasonable 262-7242</p> <p>• 50 BUSINESS OPPORTUNITIES THE GLASS SHACK, 25 yr. old, cottage co., manuf. glass & resin gifts, \$7500 incis glass, work counters, machinery & active accounts & instruction. Call 261-3918.</p>
---	--

<p>• 15 ANNOUNCEMENTS SAILING Kaneohe Bay sailboat picnics, spratly swing, inter-island also. Windward Sea, 235-2984.</p> <p>• 20 LOST & FOUND FOUND: Near CINC PAC Fleet headquarters near alda gate school ring, maybe white gold, loser may claim by describing. Call 839-6164 anytime.</p> <p>• 25 PERSONALS DARE to go bare, Nudist Park information & free visit, write P.O. Box 8417, Hiron, HI, 96815.</p>	<p>• 35 PROFESSIONAL SERVICES PAINLESS CHIROPRACTIC FREE EXAM CALL Dr. Bart Smith at 526 0426</p> <p>• 45 SCHOOLS & TRAINING SPELL WITH PHONICS IMPROVE READING Easy Phonics Method Beginning remedial reading Grammar composition 1st level & Adult Individual tutoring Qualified experienced reasonable 262-7242</p> <p>• 50 BUSINESS OPPORTUNITIES THE GLASS SHACK, 25 yr. old, cottage co., manuf. glass & resin gifts, \$7500 incis glass, work counters, machinery & active accounts & instruction. Call 261-3918.</p>
---	--

<p>• 15 ANNOUNCEMENTS SAILING Kaneohe Bay sailboat picnics, spratly swing, inter-island also. Windward Sea, 235-2984.</p> <p>• 20 LOST & FOUND FOUND: Near CINC PAC Fleet headquarters near alda gate school ring, maybe white gold, loser may claim by describing. Call 839-6164 anytime.</p> <p>• 25 PERSONALS DARE to go bare, Nudist Park information & free visit, write P.O. Box 8417, Hiron, HI, 96815.</p>	<p>• 35 PROFESSIONAL SERVICES PAINLESS CHIROPRACTIC FREE EXAM CALL Dr. Bart Smith at 526 0426</p> <p>• 45 SCHOOLS & TRAINING SPELL WITH PHONICS IMPROVE READING Easy Phonics Method Beginning remedial reading Grammar composition 1st level & Adult Individual tutoring Qualified experienced reasonable 262-7242</p> <p>• 50 BUSINESS OPPORTUNITIES THE GLASS SHACK, 25 yr. old, cottage co., manuf. glass & resin gifts, \$7500 incis glass, work counters, machinery & active accounts & instruction. Call 261-3918.</p>
---	--

Salutes

EDITOR'S NOTE: Salutes is designed to recognize individuals for their achievements and exceptional performance of duty as well as to welcome new arrivals to Hawaii. The information contained herein is compiled from Fleet Home Town News releases submitted to the Joint Public Affairs Office by unit information officers.

ComSptCo
Welcome Aboard:
LCpl S.P. Coogan
PFC R.K. Berger
Pvt E.C. McDermott
Promotion:
LCpl T.E. Darnell
LCpl J.X. Hernandez
Meritorious Mast:
Cpl M.T. Ridgel
Cpl T.J. Shaw
Cpl D.E. Stewart
Good Conduct:
Cpl L.E. Boren
Cpl T.M. Tomaro

LCpl L.W. Calkins - 3/3
LCpl E.J. Duart - SOMS
LCpl R.J. Everitt - BSSG
LCpl A.J. Gardiner - 3/3
LCpl B.A. Gray - 3/3
LCpl B.D. Hampton - CommSptCo
LCpl P.E. Haynes - 3/3
LCpl C.W. Huebner - BSSG
LCpl J.A. Lanese - 3/3
LCpl W.H. Lasher - 3/3
LCpl C.P. Lott - 3/3
LCpl J.W. Lowe - 1/12
LCpl E.J. McDonald - 3/3
LCpl J.D. Olson - CoD, 3dAABn
LCpl S. Organ - BSSG
LCpl C.D. Price - H&S
LCpl E. Reza - 3/3
LCpl C.J. Rodriguez - 3/3
LCpl P.G. Sawyer - 3/3
LCpl T.E. Craig - PFC T.P. Jacobi
Good Conduct:
Cpl A.J. Bogie
Cpl B.P. Moreland
Cpl R.L. Snodden
Marine of the Month:
LCpl M.K. Woodward

LCpl R.G. Thorp - 1/12
LCpl W.W. Tuppy - 1/12
LCpl C.M. Wallace - 3/3
LCpl C.C. Watts - 3/3
PFC G.D. Dyer - 3/3
PFC J.O. Essary - 3/3
PFC J.F. Eisner - 3/3
PFC J.W. Foster - 3/3
PFC R.P. Henry - BSSG
PFC K.P. Key - MABS-24
PFC R.G. Osborne - BSSG
PFC J.A. Richards - 3/3
PFC A. Santiago - 3/3

Ortello Guillermo
Maureen Johnson
Robert Smith
Beverly Thorne
Letter of Commendation:
Mable Baumgardner
Maxine Mahoe
Kim Whitchee
Sick Leave Society:
Earl Thomas Jr. - 500 Hours
Mary Alipio
Mabel Baumgardner
Dominga Corpus
Dennis Gonsalves
Hiroko Legarie
Harold Oshiro
Anne Ota
Eleanor Wilson
Correspondence
Course Certificates:
Jayne Black
Wayne Hubbell
Ernest Miyabe
Ruby Ogawa
Manual Perez
Janet Scarbrough
Bertha Hill
Accident Prevention
Commendations:
Tony Perez-Auto
Service Center
Hal Oshiro-Operations
Branch

H&HS
Welcome Aboard:
SSgt J.L. Gerdes
LCpl J.R. Hartsell
Promotion:
Sgt M.A. Garman
Sgt G.D. Johnson
Cpl S.M. Cooper
Cpl D.V. Hudnall
LCpl T. Abeyta
Meritorious Mast:
CPL P.G. Power
LCpl T. Abeyta
Letter of Appreciation:
Cpl A.T. Meekins
Good Conduct:
Cpl J.R. Cooper
Cpl S.M. Cooper
Cpl S.C. Cotton
Cpl J.J. Duteau
Cpl J.E. Sword Jr.
Reenlistment:
Sgt M.A. Garman

MACS-2
Welcome Aboard:
Cpl J.S. Ward
LCpl K.D. Allen
LCpl J.W. Colwell
LCpl D.J. Hite
LCpl T.G. Tollefson
LCpl S.L. Ward
Promotion:
LCpl R. Vazquez
Meritorious Mast:
Cpl D. Joseph
LCpl T.E. Craig
PFC T.P. Jacobi
Good Conduct:
Cpl A.J. Bogie
Cpl B.P. Moreland
Cpl R.L. Snodden
Marine of the Month:
LCpl M.K. Woodward

Marine Corps Exchange Employees
10 Years of Service:
Helen Lee
Alice Lum
Yvonne Phillips
Cash Awards:
Eugenia Birdsell
Kathleen George
Ginger Jones
Linda LeDrew
Lynn Verdonck
Quality Step Increases:
Linda Bermudez

St. Louis High School Graduates:
SSgt K.A. Primrose - VMFA-235
SSgt R.D. Raikes - 1/12
Sgt J. Spair - CoA3d-ReconBn
Cpl R.W. Buhr - BSSG
Cpl R.C. Gates - 1/12
Cpl B.C. Hazelwood - CoD, 3dAABn
Cpl P.A. Jones - 3/3
Cpl F. Juarez - MABS-24
Cpl J.W. Nasatka - MACS-2
Cpl J.P. Sirois - CoD, 3dAABn
Cpl W.M. Thompson - SOMS
CPL J.C. Will - BSSG
LCpl D.R. Alton - BSSG
LCpl T.E. Andrus - 3/3
LCpl K.L. Biddle - CommSptCo
LCpl V. Biondillo - H&MS-24
LCpl G.E. Brown - 3/3
LCpl C.C. Brumett - 3/3

H&MS-24
Promotion:
LCpl F.A. Cermak
LCpl S.C. Knott
Meritorious Mast:
Sgt J.A. Staton
Cpl W.C. Winters
Good Conduct:
Sgt M.K. Fox
Cpl N.B. Erickson

Hawaii Plastic Surgical Assoc., Inc.
MICHAEL D. WEINER, M.D.
Diplomate American Board of Plastic and Reconstructive Surgery
Is Happy To Announce
The Opening Of Our New
Kaneohe Branch Office
Specializing in Plastic, Reconstructive And Hand Surgery
at
46-005 Kawa St., #307, Kaneohe, Hawaii
(Territorial Building)
Evening and Saturday Office
Hours By Appointment. Call **262-6961**

Everyday Low Price*
GENERIC BEER!
NOW AT
TOWN PUMP
\$1.99 - 6 PACK
*Subject To Cool Change
• Alkahi Park 254-3185 • Windward City 235-5227
25 Kaneohe Bay Drive 45-480 Kaneohe Bay Dr.

AIKAHI AUTO PARTS
OPEN: Mon. thru Fri. 8:30-7:00 Sat. 8:00-4:00 Sun. 8:00-1:00

NAPA

KAILUA AUTO PARTS
OPEN: Mon. thru Fri. 8:00-5:30 Sat. 8:00-4:00 Sun. 8:00-1:00

Now, there is no reason not to have Booster Cables
5.99 For one week only

CALL NOW **254-3535** CALL NOW **262-8146**

COMMUNICATIONS SYSTEMS LABORATORIES
Electronic Engineering, Design, Prototype and Consultation Services now available to the public, industry and Government Agencies.
Complete list of services, reasonable fee schedule available upon request.
HAWAII INVENTORS - Need an electronic package to make your idea click? Call us in complete confidence. Through our industry contacts we may even be able to help put your idea into production and marketing.
CALL 677-3380 M-F 9:00 AM-4:30 PM

1/12
Welcome Aboard:
Cpl C.D. Jones
LCpl T.L. Adkins
LCpl G.E. Bellamy
LCpl J.D. Earl
LCpl P.M. Gonzalez
LCpl A.R. Isales
LCpl C.B. Jackson
LCpl G.D. Kimmons
LCpl W.W. Hitchcock
LCpl J.R. Lyons
LCpl J.C. Ricks
LCpl D.M. Rose
PFC C.L. Ditto
PFC D.T. Franks
PFC T.D. Garr
PFC S.P. Haan
PFC J.D. Ingram
PFC R.E. Hartsell
PFC M.N. Fayall
PFC W.L. Stemen
PFC B.N. Swinton
PFC A.S. Tomlinson
Promotion:
Sgt M.D. Wilburn
Cpl S.J. Saputo
PFC M.E. Hatten
PFC G.T. White

MACS-2
Welcome Aboard:
PFC J. Lopez
Promotion:
Capt J.S. Miller
LCpl J.K. Kapana
LCpl D.S. Ono
LCpl R.E. Santiago Jr.
LCpl C.E. Wolbaum
Meritorious Mast:
Sgt J.D. Jackson
Cpl K.P. Baisley
Cpl R. Hansen

St. Louis High School Graduates:
SSgt K.A. Primrose - VMFA-235
SSgt R.D. Raikes - 1/12
Sgt J. Spair - CoA3d-ReconBn
Cpl R.W. Buhr - BSSG
Cpl R.C. Gates - 1/12
Cpl B.C. Hazelwood - CoD, 3dAABn
Cpl P.A. Jones - 3/3
Cpl F. Juarez - MABS-24
Cpl J.W. Nasatka - MACS-2
Cpl J.P. Sirois - CoD, 3dAABn
Cpl W.M. Thompson - SOMS
CPL J.C. Will - BSSG
LCpl D.R. Alton - BSSG
LCpl T.E. Andrus - 3/3
LCpl K.L. Biddle - CommSptCo
LCpl V. Biondillo - H&MS-24
LCpl G.E. Brown - 3/3
LCpl C.C. Brumett - 3/3

• 10 CEMETERY PLOTS
HAWAII Memorial Park, cemetery plot \$1000. Call 668-1194 or 262-9806 ask for Helen.

• 15 ANNOUNCEMENTS
SAILING Kaneohe Bay sailboat picnics, spratly swing, inter-island also. Windward Sea, 235-2984.

• 20 LOST & FOUND
FOUND: Near CINC PAC Fleet headquarters near alda gate school ring, maybe white gold, loser may claim by describing. Call 839-6164 anytime.

• 25 PERSONALS
DARE to go bare, Nudist Park information & free visit, write P.O. Box 8417, Hiron, HI, 96815.

• 35 PROFESSIONAL SERVICES
PAINLESS CHIROPRACTIC FREE EXAM CALL
Dr. Bart Smith
at 526 0426

• 45 SCHOOLS & TRAINING
SPELL WITH PHONICS IMPROVE READING
Easy Phonics Method Beginning remedial reading Grammar composition 1st level & Adult Individual tutoring Qualified experienced reasonable
262-7242

• 50 BUSINESS OPPORTUNITIES
THE GLASS SHACK, 25 yr. old, cottage co., manuf. glass & resin gifts, \$7500 incis glass, work counters, machinery & active accounts & instruction. Call 261-3918.

SEWING Machine Repairs
All Brands
We Pickup & Deliver
Call Raymond's 696-6449

AIR CONDITIONING, Refrigerator repair, FREE Estimate
833-4093, 499-1231

YOGA Classes, cert. inst. for U of H & Hawaii, Loa. Studied in India. 282-8408.

ORGAN - PIANO Lessons
John Schouten
235-2010 or 247-6010

PIANO Lessons given by experienced pianist.
Call 235-3079

GUITAR & Voice lessons.
Professional teacher & performer. Beg., & Advanced.
262-8408

PIANO Lessons, your home or mine.
Kailua, area. 262-5152

FREE Jazzercise class.
Kaneohe, Pearl Harbor.
Call 487-6071

MATH & French tutoring by qualified College student.
262-8381 after 5 p.m.

HONOLULU Music Institute:
Group and private instruction in Guitar/Piano/Cello/Woodwinds/Violin. Honolulu 521-1515

STAINED GLASS CLASSES 4
week course. Excl. discount Ph. 487-1343 days or eves.

GUITAR Lessons. Your home or mine. Honolulu area. Call 396-9165

Your ad could be here.
Call Classified 235-5881

CLASSIFIED INDEX	
Classification categories are listed alphabetically	
Announcements	15
Autism	129
Appointments	127
Auto. Uninsured	73
Auto. Uninsured	74
Auto. Uninsured	75
Auto. Uninsured	118
Auto. Uninsured	155
Auto. Uninsured	181
Auto. Uninsured	146
Auto. Uninsured	141
Auto. Uninsured	46
Auto. Uninsured	50
Auto. Uninsured	100
Auto. Uninsured	120
Auto. Uninsured	121
Auto. Uninsured	172
Auto. Uninsured	113
Auto. Uninsured	61
Auto. Uninsured	62
Auto. Uninsured	63
Auto. Uninsured	64
Auto. Uninsured	65
Auto. Uninsured	66
Auto. Uninsured	67
Auto. Uninsured	68
Auto. Uninsured	69
Auto. Uninsured	70
Auto. Uninsured	71
Auto. Uninsured	72
Auto. Uninsured	73

• 50 BUSINESS OPPORTUNITIES

DO YOU recognize OPPORTUNITY when you see it? Call 833-5821 evens, 6-9 p.m. Mon.-Fri.

HOME Decor... If you ever sold, are selling by party or individually & want to increase your income \$200 per week. Ph. Bob 672-9892

SALES PEOPLE CHER BELL, ALDE VERA Products FANTASTIC OPPORTUNITIES 235-8355

OWN your own hair shop... Offering all the national known brands such as Jordon's, Van der Grint, Klorox, Sarsaparilla, etc. and over 70 other products. \$12,500.00 includes everything you need to start. Call 254-4143

INVESTMENT SEMINAR 'How To Beat Inflation' 'The Use of Leverage' 'New Tax Laws' 'And Lots More' Tues., Oct. 6, 7 P.M.

OPPORTUNITY For ambitious people write: C&N International, G.P.O. Box 86209, Honolulu, HI 96815.

OPPORTUNITY For ambitious people write: C&N International, G.P.O. Box 86209, Honolulu, HI 96815.

OPPORTUNITY For ambitious people write: C&N International, G.P.O. Box 86209, Honolulu, HI 96815.

OPPORTUNITY For ambitious people write: C&N International, G.P.O. Box 86209, Honolulu, HI 96815.

CORRECTION GENERAL MANAGER of a Hawaii Federal Credit Union... The first paragraph of the ad should have read: The General Manager, as the top appointed official under an elected board of directors, oversees the overall management and operation of a well-established, federally chartered credit union in accordance with the policies of the board and Federal and State laws and regulations.

General Office Help Wanted Growing Business needs sharp person for Circulation Department. Type 50 wpm. 10-key by touch, heavy telephones, process mail subscriptions. Must have car for field assignments. One year experience in office helpful but not mandatory. 42 hour work week. Advanceable position. Medical, Dental, Disability Insurances and Profit Sharing. Call Pat Meador at 235-5881 for interview.

TECHNICIANS ENGINEERS RADCON ELT'S I&C ET'S PUT YOUR EXPERIENCE TO WORK Become a valuable member of a growing team. We provide a general benefits package and excellent advancement. NISS Inc. provides technical and professional assistance to the nuclear and non-nuclear industries across the U.S. Call or send resume to: NUCLEAR SUPPORT SERVICES, Inc. Bob Garland 21A Bancroft Square Hershey, PA 17033 717-533-4838 Don Romine 402 South 33rd St Suite 106 Federal Way, WA 98003 206-832-8191

• 60 HELP WANTED MALE & FEMALE

KOREAN Cook wanted. Hawaii. Part time or full time. 637-9122 or 637-5663

AVON GOING INTO THE BEAUTY BUSINESS IS GOOD BUSINESS! Sell Avon and start your own beauty business. See your own home. Do your own boss. Earn good money for yourself. Call 866-5276

KORUUA EMPLOYMENT All household jobs. Word Processor \$800 mo. Receptionist \$475 mo. General Office \$675 mo. Light work \$300 mo. Manager. Training wages plus Office Clerk \$335 mo. plus Light Duties \$550 by Night. Office \$575 mo. 777 Kalaniana'olani Ave. Suite 105 Honolulu, HI 96815

OFFICE 10 KEY SOME NO EXPERIENCE ON TYP 40 JOB CENTER Call Gary at 437-6974

ACCOUNTING ASSISTANT accurate, enthusiastic person for clerical position in College Business Office. 10 key, nec. light computer experience helpful. Ph. 235-341 ext. 142. An equal opportunity employer

NAVY Federal Credit Union has vacancy for Teller. Full time Mon. to Fri. Approx. \$783 per mo. 836-1181

THE CREATIVE Circle needs demonstrators Island wide. Work 15 hrs a week & earn \$100 or more. A new way of selling. Stitches & needlecraft items. We train. 422-0821

BANK TELLERS \$720-\$775 Exper. helps but will train w/cashier exp. and lit typing. Call Island Jobs, 523-5802

WANTED: Experienced fry cooks needed for successful family restaurant in Kailua. Call Jerome at 261-8724.

TWO WAY RADIO SALES Military Communicators leaving service or retired, sell G.E. radio systems to business & industry. Excellent opportunity for persons with background, enthusiasm & energy. Base plus commission. Recruits with operational communications experience should apply. CALL COMAR ELECTRONICS for interview 833-5856

General Office Help Wanted Growing Business needs sharp person for Circulation Department. Type 50 wpm. 10-key by touch, heavy telephones, process mail subscriptions. Must have car for field assignments. One year experience in office helpful but not mandatory. 42 hour work week. Advanceable position. Medical, Dental, Disability Insurances and Profit Sharing. Call Pat Meador at 235-5881 for interview.

TECHNICIANS ENGINEERS RADCON ELT'S I&C ET'S PUT YOUR EXPERIENCE TO WORK Become a valuable member of a growing team. We provide a general benefits package and excellent advancement. NISS Inc. provides technical and professional assistance to the nuclear and non-nuclear industries across the U.S. Call or send resume to: NUCLEAR SUPPORT SERVICES, Inc. Bob Garland 21A Bancroft Square Hershey, PA 17033 717-533-4838 Don Romine 402 South 33rd St Suite 106 Federal Way, WA 98003 206-832-8191

• 60 HELP WANTED MALE & FEMALE

INCREASE Your income, part time or full time distributors & sales people needed for new product. Opportunity. Call 239-9414

ISLAND EMPLOYMENT P.T. General Office \$450 hr. P.T. Driver \$335 hr. P.T. Recept. \$5 hr. Clerk \$420 hrs. Counter Persons \$335 hr. Bookkeeper Recept. Open Photo Trainee \$335 hr. 1st Class Auto Painter DOE Melinda 261-9782

SALES PEOPLE NEEDED!! Start a new & profitable career in radio. Experience helpful, but not a must. Go to the top with us! Ph. 671-2851 9 am-5 pm weekdays

ORGANIST and/or choir accompanist for a Midtown church. Must be avail Thurs. eves & Sun. morns Ph 623-9972 after 3:30 pm

RNS LPNS Jobs available, pick your shift day & time you want to work. Call for benefits. Western Medical Services 900 Fort St., Suite 920 Call 524-0311

PRESCHOOL TEACHER college or 2 yrs equivalent. Mornings only in Kailua. 845-8233.

EARN EXTRA MONEY Part Time 5:30-9 pm. Nation's largest discount shopping service outlet has sales & delivery positions avail. Distributors of stores, television, microwave. Also the buying service for clothing, furniture, sporting goods, auto accessories. Openings avail. in Hono. Pearl Harbor, Salt Lake, Waikanae, S.W. Beach, Barbera Point & MCAS. Start at \$410/hr or incentive pay plan varies. Call Central Personnel Office for interview 833-4576 ask for Mary or 847-5556

MILITARY WIVES ARE YOU HOMESICK? Want to take the kids home to visit grandma or better still, bring grandma with you? You can earn enough money to pay for the travel expenses by working part time for our discount store. Earn \$4.10 per hr. or choose higher pay plan. No experience necessary. 9 to 12 hrs per wk. Between 5:30 to 9 P.M. Ph. 833-2228 Ask for Amy

MILITARY HOUSE CLEAN Reasonable Rates Guarantee Inspection FREE Estimates CALL 422-2535 or 422-6914

TELEPHONE SALES/TELEPHONE Morning & evening shifts available. 30 telephone people needed for radio station's exciting new promotion. Casual dress, guarantee plus bonuses & incentives. No experience necessary, will train. HIRING NOW! Apply in person 10am-6pm 1919 Kalakaua Ave., Suite 4 (near Sizzler Steakhouse)

ARMY ★ 2-YEAR ENLISTMENTS ★ \$14,100 FOR EDUCATION ★ GUARANTEED TRAINING ★ GUARANTEED LOCATIONS ★ \$5,000 CASH BONUS and we have many technical skills... computers, helicopter mechanics, lasers, etc. Call Army Now Waikiki 531-3715 Kaneohe 235-6491 Waipahu 671-3934 Kalihi 847-3905 ARMY. BE ALL YOU CAN BE.

• 60 HELP WANTED MALE & FEMALE

NEED extra income? Earn it in your spare time. Call 488-5667 for appl.

NEED hardworking sales person to drive our ice cream wagon. Also part time person to help with the business. 262-8259

LOST your Tr-Chem liquid embroidery instructor? FREE services, classes and our NEW Xmas catalog. 235-3084. Full part time job opportunities

• 62 DOMESTIC HELP WANTED PROF. Couple need exper. quality care-17 mo. boy, 5 day wk. 247-0070 Kaneohe.

WANTED Super care giver for 18 month girl. My Kailua home, 3-4 hrs daily. Non smoker-non drinker. No references required. No "babysitting" I want one on one stimulation, play and companionship. Call 262-4753

• 63 SITUATIONS WANTED HOUSECLEANING, Shopping, running errands, etc. Ph. 239-6951, Carole

SUPER receptionist/all around girl Friday seeking Mon-Fri full time position on Windward side starting at 5975. 262-0028 evens.

BABYSITTER - Experienced mother, Monday-Friday. Cecilia 261-3617

IRONING - Will pickup/deliver. Flat rate. Charlie 261-3617

WILL clean Hickam home weekly. Call 422-7156

CHRISTIAN Needs cleaning jobs on Windward side. \$5 hr. exper. Ph. 254-2650

BABYSITTING, KMCS Lunches, snacks and TLC Fenced Yard. Ph. 254-9656

• 66 GARAGE & LANAI SALES GARAGE Sale, & POTTERY Sale, chest of drawers, \$25 & \$30. BSR Turntable, \$20, 3/4 Roth violin \$150, dining room set & misc. items, Oct 3, 8 a.m.-4 p.m. 78 S. Kaimalu Dr. Kailua.

• 68 GARAGE & LANAI SALE

GARAGE Sale: Sat. Oct. 3, 9 to noon, 304 Wanao Rd., Kailua, h/dressed lg. desk, lots of misc. items.

YARD Sale, Oct. 3, 10 am-5 pm, 2475 E. Moses St., KMCS. Furn., household items, books & misc.

GARAGE Sale 4 Families: Furniture, tools, typewriter, sport goods, clothes etc. Oct 3, 4, 9 to 3 PM, 1744 Lawrence Rd. KMCS.

CLOTHES: handmade alghan; fabrics & linens & misc. items, 1028 Aialapa Dr., Kailua, Sat. & Sun. 261-3088

FURNITURE: Plants, clothes, knickknacks Sat. & Sun. 45-125 Makihulia St., Kaneohe.

NEIGHBORHOOD Garage Sale 9 to 4, Sat, Oct 3, baby, children's, adult clothing, toys, books, housewares, furn., (crib, dinette set, new vacuum). Many like new quality items. 94-344 & 348 Luleaka St., Kailua.

GARAGE Sale, Sat. 10/3, 9 a.m.-3 p.m. Artist's canvases, frames, lawn mower, bowling balls, much misc. 44-120 Kaulahoua Pl

GARAGE Sale, Oct. 4, 9 a.m.-2 p.m. Lots of clothes for young boys 8-12 yrs old, girls teen size 8-10, little girls size 6, Harlequin books, twin bed, misc. 942 Kapi St., Kailua.

GARAGE SALE, 933 Kapi St., Kailua. Saturday 10/3, 10 a.m.-1 p.m.

CARAGE Sale: Clothes; furniture; 27 gal. aquarium; sin. antiques; misc. 303 Koko Isle Circle, Sat. 8 to 1

ST. JOHN VIANNEY Garage Sale, 9 a.m.-12 p.m., 940 Koolu Dr., Kailua.

OUTDOOR furn., plants; bar w/stools & misc., 233 Mookua St., Kailua, Sat. 9 to 3

SAT. 7:30 am-2 pm, 1189 Lualoa St., Kailua. CB Radio, reel to reel recorder, etc.

SOFA; dressers; lamps; paintings; kitchen stuff; clothes; plants; appliances & misc. 1018 Uluphi Ln. 262-4439

CRAFT Fair: Sat. Oct. 3 10-3 at Mokapu School Kaneohe, MCAS Open to all

• 68 GARAGE & LANAI SALE

MULTI Family Garage Sale: Furn.; stereo; many household & misc. items. Sat. & Sun. 11 to 6, 403 Kaimake Ln., Kailua

GARAGE Sale: Sat. & Sun. from 9 to 3, dining set; dresser; living rm. chair; coffee table; bed; children's chair set; toys; clothes & misc. 75 Kailua Pl., Kailua

FURNITURE: 70 Datsun wagon; clothing; toys; misc. items. Sat. & Sun. 589 Paokano Ln., Kailua

DINETTE Set, clothing, misc. items. Sat. & Sun. 589 Paokano Ln., Kailua

SUNDAY ONLY - CHEAP: Plants; books; clothes; stove. 137-A Kapa St., Kailua

HOUSEWARES, Clothing, wheelchair. Oct. 10-11, 9-2 p.m. 95-160 Aumae Pl., Mililani

GARAGE SALE, 572 N. Kalaheo Ave., Kailua. Saturday only. Oct. 3, 9 a.m.-5 p.m.

• 73 APTS. FURNISHED KAILUA, 1 bdrm., no children, or pets, avail. now. Call 254-2065.

WAIKIKI: Lge. furnished studio, patio garden, attractive on bus line, parking \$300 per mo. 949-0892

NIU VALLEY - new lge. ocean view studio w/lanai, utls. incl. \$450. 373-2600, 262-0445

KAILUA Furnished beach cottage \$460 incl. utls. Carport Ph. 262-4765

• 75 APTS. PARTLY FURN. KAILUA, studio, \$300. 262-6462

PEARLRIDGE, Letepono, 2 bdrm. 2 bath, 27th floor view, 2 covered parking, \$550. Ph. 471-6156 or 487-5835

SALT LAKE, 1 bdrm., 5 Regents, most amenities, \$400 incl. utls. Ph. 841-8436

KANEKOE 3 bdrm., 2 bath, beautiful view, lots of amenities, \$500. 261-6141

• 76 RENTALS TO SHARE KAILUA: Female mid 20's \$250 incl. utls., 1 mo. dep. req., pet ok. 254-4267

• 76 RENTALS TO SHARE

KANEKOE: Rooms available for neat, clean, quiet, responsible, non-smoking male/female or couple. \$220-\$230 single, \$310 couple. Ph. 471-9474 or 239-7183 Darrell.

MALE To share w/wife, 2 bdrm. cond., \$212 + utls. Call 235-2976, 823-0277

KAILUA, professional lady to share lovely beach home. \$300. Ph. 262-4765

KANEKOE: small private room, share bath, kitchen, etc. pool \$185, plus deposit, references. 247-1141.

MIDDLE aged lady, responsible, non-smoker, share w/wife, seldom home, quiet. K. Shire. 941-2231

NUUANU: female to share w/wife, parking, kitchen priv. \$195 incl. utls. 595-3414

KANEKOE: Haiku Townhouse, \$200 incl. utls. Mature quiet person. 235-2552

KAHALA, luxurious living for man to share 5 bdrm., home w/wife. No rent, but other costs average \$510 per month per person. Price includes own fully furnished room (double bed, extension phone, intercom, desk), meals provided by live in cook-housekeeper. Linens, all utls., use of laundry facilities, use of TV & radio in living room. Off street parking, other features. Ph. 734-8819.

ROOM For rent in private house, pool & storage, \$250 mo. Maunawili area. Avail. immed. Ph. 262-8358

KAILUA Beach: Responsible person to share spacious home. Room w/own bath, nr. beach, bus & store. Call 262-0864 evens.

AMIALE, busy, considerate woman wishes to share attractive Kaneohe Bay Townhouse with one person. Beautiful view, Hawaiian furnishings, own Room and bath. Tennis, pool, Jacuzzi. 235-3912

KANEKOE 3 bdrm., 2 bath, beautiful view, lots of amenities, \$500. 261-6141

• 76 RENTALS TO SHARE KAILUA: Female mid 20's \$250 incl. utls., 1 mo. dep. req., pet ok. 254-4267

• 83 HOUSES PARTLY FURNISHED

SUNSET Beach, 2 bdrm., yard, kids, pete O.K., Call 638-7288

3 BDRM., 2 bath, family rm., patio, solar, fireplace, nr. beach \$750. 2261-3736 or 259-5859

KANEKOE end unit, 2 bdrm., 1 1/2 bath, enclosed 2 car garage, mtv. view, pool, nr. shopping & bus, no pets. \$550. Jenon Sullivan. 261-5536, Nielsen Realty 262-9668

KAILUA: Maunawili, spacious 3 bdrm., 3 bath duplex \$600 includes water & gardener. Refs. required, no pets. Call 261-4374

HAWAII KAI/Kalama 3 bdrm., 2 bath, den, avail. now, \$875. Call 395-0114.

KAILUA: 3 bdrm., 2 bath, fenced yard, no pets \$690 Call 254-1105, 262-8886

EWA BEACH, near Barber's Point, 3 bdrm., 1 1/2 bath w/solar heating, \$530. 637-9770

KAILUA: Enchanted Lake, 3 bdrm., 1 1/2 bath, family room, excl. cond., large yard, no pets, near schools & bus. Avail. 11/1, \$625. Call 262-0769 evens.

• 85 TOWNHOUSES PARTLY FURNISHED NANAKULI 4 bdrm. 1 1/2 bath; washer/dryer, gas appliances; \$500/mo. incl. gas, water, cable TV. Call Charlie 488-7739

• 86 TOWNHOUSES FURN. WINDWARD COVE - large 3 bdrm. executive condo, 2 baths, pool, 2 lighted tennis courts, sauna, jacuzzi, wet bar, solar system, water fall off back lanai. \$750 month. Ph. 261-2612 or 235-1484, Ellen.

• 87 TOWNHOUSES UNFURN.

OCEANFRONT condo apts. at Makaha, utls. incl., no Lease. From \$300. 538-7145.

KANEKOE 2 bdrm. townhouse - Nani Koolau, 1 1/2 bath, pool, yard \$475. Ph. 235-4739

HAWAII Kai: Lg. 1 bdrm. unit, \$525 unfurn., \$850 furn. no pets. 395-8101.

• 88 ROOMS FOR RENT IF You're looking for a clean, quiet & relaxed atmosphere located in the heart of Kaneohe, this may be for you! Your own private room, amenities incl., \$225. Call evenings 247-4119, 293-2080

KAILUA, working person share bath, \$100 deposit, rent \$195. 261-1478

1 ROOM available now, 1 available Oct. 3, working man preferred. Military welcome. Call 262-5634.

MAILE - townhouse 3 bdrms., 2 bath, \$450 mo. Felix Olmos Realtor 422-2891.

• 93 VACATION RENTALS MOLOKAI Wave Crest sleeps 4, beach, pool, \$26 per day, \$170 per week, 395-6085.

BEACHFRONT studio near Crochuing Lion. Week, Month, party. 235-6196.

KAILUA: 1 Bdrm., cottage, 1 block to beach, 2 quiet adults only. \$175/wk., 2 day/mo. rates also. 262-4287.

LANIKAI: 2 bdrm. home furnished, 1 block from beach, adults only. Day, Week or month. Call 261-3088

KUILIMA: 1 bdrm., apt., sleeps 4, amenities. Daily/wkly./mo. 235-1481

VACATION Rental, Kaaawa, magnificent view 2 bdrm., 1 1/2 bath + loft. Swimming pool, volley ball, \$250 per wk. Cathy Lyman 261-4332.

Having A Garage Sale? Let KKUA Help You Tell People About It It's FREE! Write To: KKUA 765 Amana Street Honolulu 96814 for application

COMMUNITY YARD SALE & SWAP MEET PEARL CITY PENINSULA NAVY HOUSING AT THE END OF LEHUA AVE. 9:00 A.M. OCT. 3rd JUNK! TREASURES! LOOT! FOOD! CRAFTS! OTHER STUFF! CALL 455-2718 TO PARTICIPATE

It Only Takes A Few Minutes To Place Your CLASSIFIED ADS \$1.65 per line per week ONLY Plus 4% State Tax; 3 Line Minimum

BUSINESS & SERVICE DIRECTORY Answering Service, Carpentry, Construction, Electrical, Housekeeping, Masonry, Painting, Piano Tuning, Pool Services, etc.

128 MISCELLANEOUS

LAWN mowers - rotary \$65, reel \$125. Guaranteed. Call 259-5927

WHIRLPOOL automatic washer, excl. cond. \$200. Call 624-5048

WHIRLPOOL washer & dryer, apartment size, \$500 or best offer. 422-1371

30" ELECTRIC range, avocado, good cond., 10 yr. old. \$150. 235-3308

GE upright freezer, 21" across, 62" length, ice box 14 cu. Frost guard on wheels. 247-0789 after 4 p.m.

Libra New - Reconditioned Washers & Dryers
Available - 6 mos. lease or longer. \$13.50 per mo. Includes full maintenance.
847-1344 Ask for Don

130 ANTIQUES

EXCELLENT CONDITION. Oak desk, couch, upright piano. Ph. 261-7843

131 WIKI WIKI FREE BEE

FREE Cockapoo/Schnauzer, 8 months, male. Call 239-7686

FREE Kittens, litter trained. Call 239-5065

FREE 8 wk. old puppies, cute & cuddly, small mixed breed. Call 689-0900 before 10 a.m. or after 5 p.m.

FREE Mixed pit bull puppies, 6 weeks, to good home w/fenced yard. Ph. 261-8076

FREE puppies, 7 weeks, kittens, 8 weeks, to loving homes. 823-1047 eves.

FREE 2 kittens to good home 4 mo. male, 6 mo. female. 254-1317

FREE small cute & cuddly puppies will make good house dogs part spaniel. Ph. 254-4223

FREE Male 1 yr. old dog, needs good home Part Doberman. Good watch dog, house-broken but used to being outside. 254-4223

FREE kittens, Males & females, Part siamese, part Abyssinian. 235-6081

FREE 1 year old cat, 5 month old cat & three 7 week old kittens. 422-1371

FREE 2 kittens, 9 weeks old to good homes. Call 623-1118

FREE To good home, part Shepherd/Lab 2 1/2 years old, good w/children. 262-8634, 261-0876

FREE Tortoiseshell Persian w/papers 3 Half Persian kittens. Ph. 499-1757

FREE 1 year old mixed breed female dog, medium size, spayed, all shots. 396-9937

FREE 1 yr. old w/ Beagles, Moscow ducks. Need good homes. Call Grace 833-3044/254-2264

FREE 6 wk. old puppies, fluffy, cute & cuddly. Part Spaniel, good house dogs. Ph. 254-4223

FREE Puppies Mama is leaving for Mainland, need 9 new moms, willing to feed w/bottle if necessary. 4 weeks old. Or will have to be destroyed. Ph. 254-4223

FREE Kittens, dumped on my doorstep, cute & cuddly, 6 weeks. 261-1018

FREE 1 yr. old male dog, part Doberman. Good house dog, needs good home or will go to pound. Ph. 254-4223

FREE To good home, darling 7 week old kittens, also 6 month old male. 455-3245

133 MISCELLANEOUS WANTED

WANTED: Unserviceable RCA, Zenith & Motorola Quasar, Color TVs. 623-2326

WE Buy Used Furniture & beds. Call 623-7074

CASH for Lawn Mowers & Outdoor Motors. Any Condition. Ph. 259-5927

WE BUY used furniture. We pay cash and pickup. Call 261-8482 or 261-1406

WANTED: Unserviceable washers, Maytag, G.E., Whirlpool & Kenmore. Call 621-9003

144 MUSICAL SALES & SERVICE

BUNDY Clarinet, excellent condition \$175. Call 395-3559 after 4 p.m.

HAMMOND Spinnet organ. Excellent condition. 261-6426 eves. Must sell.

GUITARIST seeking group employment. Highly diversified. Avail. Immed. 262-0319 anytime.

EXPER. Piano hauling ins. S&S Del. Lic#12. Call 833-1859 or 254-4142

KIMBALL piano Console, excellent condition, appraised \$950. 254-2110

GIBSON L6 Deluxe Guitar, Honner 1230 amplifier, Cry baby Wah Wah pedal. \$600. 677-4442

ISLAND Star Music Studios. Pearl City location. Call 732-5496

Student Guitars SPECIAL. Reg. \$146 SALE \$99.99. While supplies last. YAMAHA MUSIC CENTER. Registered-Peak 254-8876

148 BOAT SUPPLIES & SERVICE

FOR Sale: Brand new 2 man Kayak, "Savoyr Tahiti" includes paddles and pump. Ph. 261-7449 eves.

16 HOBBIE Cat w/trailer and accessories. 28 months old. \$200. Make offer. 262-8776

30" TRIMARAN. Excl. fiberglass, 8 interior seats, needs TLC \$799. 247-3333

37 HONDA 125 cc. Scoop w/2000 cc. engine. 247-3333

148 BOAT SUPPLIES & SERVICE

WANTED Used trailer for 16' Hobie Cat. Call 254-1346

19' REINELL 140 Evinrude O.B. complete w/skis, safety equip., top & cover, radio, PA system etc. Callins 62 trailer. \$5950. Ph. 254-2507

14' HOBBIE Cat. boat & trailer, excl. condition \$1000. Call 623-7854

HOBBIE 18 Ft. fully rigged. Must sell, sacrifice \$1500. Offer. Call Gary 526-1711 days or 247-5152 eves.

BOAT for sale \$115 w/trailer, needs work. Call 262-5615

JOHNSON 9.9 O/B excl. cond., \$450. Call 247-9120, after 2:30 p.m.

14' SAILFISH - type glas over ply. \$250. Call 262-5378

TWO Man KAYAK Double paddles, \$325. Excellent. Ph. 262-4894 evenings

14' WELLCRAFT boat, Evinrude motor, & trailer. Good cond. \$2300 or offer. Call 261-2930

19' REINELL 165 OMC, easy load trailer, excl. cond., extra optional \$6200. Call 455-9390 after 5 p.m.

21' KAUIA Sampson w/trailer, 100 hp, diesel, \$7000, or offer. Daily after 6 p.m. & wkends. 293-5806

151 PET SUPPLIES & SERVICE

WANTED AKC male old English Sheep dog for future stud service. 456-9068

AKC Female German Shepherd, 4 yrs. old, spayed, loves kids. \$100. 989-7461

WANT To breed female Maltese dog w/same breed. Ph. 671-3892

AKC Adult Chihuahua 4 females, 2 males. Ph. 247-2853

COCKATIELS (2). Ige, birdcage, fish tank. Call 262-4254

ADORABLE Chihuahua pups \$100. Canaries, breeders \$40 pair. 623-2156

AMERICAN Staffordshire Terrier pups, 3 months old. Call Dave 239-9120

WANTED: AKC registered Toy Poodle for stud. Call 423-2130 after 5 p.m.

156 AUTO PARTS & SERVICE

DANA 60 carrier and Spider gears \$110, 4 rocket black steel rims 8.25 x 16.5 \$110. Mario at 949-9603 or eves. 456-2730

SUPER BUG BODY & PAINT SERVICE

(Acacia City Hill - Waipahu) Your one stop VW facility. Open till 9 p.m. Mon-Sat. Call 677-0200

181 AUTOS WANTED

WANTED: Car or truck, running or not. Will pay up to \$500. Ph. 396-8182

188 PICKUPS, TRUCKS

78 DATSUN Pick up, 44,000 miles, \$3400. Excl. cond., 235-2552

80 DATSUN, truck, 4 wheel drive, 9,000 mi., Jensen stereo, tinted windows, roll bar \$8,000. Ph. 254-1142

75 SCOUT 4x4, auto, p/s WYA322 \$3295

75 GMC 1/2 ton pickup 6507BD \$2895

73 Ford 1/2 ton pickup 6 cyl., 84, 5916 \$2295. Car City 833-3017

75 CHEVY Scottsdale w/ ton rack, tool boxes, tinted windows, good condition \$4100/best offer. 262-2079

78 FORD Pickup, 4x4, \$5950/offer. Excl. cond. Ph. 261-5171

LOTS OF PICKUPS & WHOLESALE MOTORS

Ph. 636-1222 2900 N. Nimitz Hwy.

171 MOTORCYCLE SALES & SERVICE

88 HONDA 305, Scrambler low mileage \$195. Call 262-5378

75 HONDA CB200, elec. start, new tires, shocks, seat cover \$475. 422-8184

1977 HONDA GL1000 Goldwing, new tires, recent tune-up \$1,700, or offer. 235-5210 eves.

GREAT Gas Saver! VESTA SCOOTER P200E. Rack & windshield, 2,700 mi. like new \$1150. 947-6454

74 DODGE Maxi Working Van, loaded. (BR7462) \$2175. WHOLESALE MOTORS. Ph. 636-1222 2900 N. Nimitz Hwy.

79 SUZUKI 4x4 w/water 19,000 mi. Shors. (BEV254) \$3975. WHOLESALE MOTORS. Ph. 636-1222 2900 N. Nimitz Hwy.

80 YAMAHA 250, Exciter I, excl. cond., \$3,280 mi., \$1000. 455-7456

74 YAMAHA street bike, good condition \$450. Call 455-5274 eves.

AAAA Specials AAAA LOTS OF 4x4's. WHOLESALE MOTORS. 2900 N. Nimitz Hwy. 636-1222

78 CHEVY 4 x 4 w/water pickup, 19,000 mi. excl. cond. \$3,280 mi., \$1000. 455-7456. WHOLESALE MOTORS. 2900 N. Nimitz Hwy. 636-1222

171 MOTORCYCLE SALES & SERVICE

80 HONDA Hawk CB400T Sharp 8,000 mi. \$1450/offer. Call 688-2756

78 HONDA 550, Showroom condition, 3300 mi. Priced to sell quickly \$1200. Includes 2 helmets & motion burglar alarm. Call 395-0794 between 6 p.m. & 9 p.m., or leave message on machine.

173 AUTO ANNOUNCEMENTS

JEeps, CARs, PICKUPS. From \$35. Available at Local Gov't Auctions, For Directory call Surplus Data Center 415-864-0537

174 RENT-A-CAR

RELIABLE Used Cars, Low Monthly and Weekly rates. Collision waiver extra. Auto Mart Car Rental, 98-068 Kam Hwy., Aiea. Ph. 487-9991

175 VANS CAMPERS & JEeps

88 VW VAN, needs some work, \$1500 or best offer. Ph. 235-2411

64 FORD Van, partly customized, \$500 or offer. Call 262-7452

72 FORD Van, 6 cyl. std. 588ECP some rust \$688

73 Chev. Custom van 1/2 ton, 3507CE \$2295. Car City 833-3017

CLASSICS & ANTIQUES

85 CORVAIR, Turbo, many extras. Call 537-5882 or 235-2757

ALPHA ROMEO

74 ALFA Spider, 56,000 mi., AM/FM cassette, \$5,000. 239-6115

AUDI

74 AUDI 100 LS, 4 spd., AM/FM, new tires. Excl. cond., PH 257-2922 dwn ask for Brad.

BUICK

'79 RIVIERA 2 dr. Luxuriously eqpt., immac. (BG7135) \$8775. WHOLESALE MOTORS. Ph. 636-1222 2900 N. Nimitz Hwy.

'77 CENTURY 2 dr., clean, many extras, only 27,796 mi. (HEF567) \$3275. WHOLESALE MOTORS. 636-1222 2900 N. Nimitz Hwy.

CADILLAC

80 CADILLAC Fleetwood Brougham d'Elegance. Call 254-1098

79 SEVILLE, loaded, Excl. cond., w/new tires & major maint. warranty incl., \$11,200/offer. Ph. 948-2148 days or 623-0097 eves.

80 EL DORADO, brown/belge interior, 10,000 mi., sunroof. Call 254-4636 home, 945-7200 office

DESPERATE

Need clean small car. Will pay over top \$\$\$.

WHOLESALE MOTORS 2900 Nimitz Hwy. 636-1222

BAY CHEVY'S

YOUR WINDOW CHEVY DEALER

DIESEL SALE

OR CARS & TRUCKS

Bay Chevrolet

Kaneohe 835 3621

WHOLESALE MOTORS

Ph. 636-1222 2900 N. Nimitz Hwy.

74 DODGE

Maxi Working Van, loaded. (BR7462) \$2175. WHOLESALE MOTORS. Ph. 636-1222 2900 N. Nimitz Hwy.

79 SUZUKI

4x4 w/water 19,000 mi. Shors. (BEV254) \$3975. WHOLESALE MOTORS. Ph. 636-1222 2900 N. Nimitz Hwy.

80 YAMAHA 250, Exciter I, excl. cond., \$3,280 mi., \$1000. 455-7456

74 YAMAHA street bike, good condition \$450. Call 455-5274 eves.

AAAA Specials AAAA LOTS OF 4x4's. WHOLESALE MOTORS. 2900 N. Nimitz Hwy. 636-1222

78 CHEVY 4 x 4 w/water pickup, 19,000 mi. excl. cond. \$3,280 mi., \$1000. 455-7456. WHOLESALE MOTORS. 2900 N. Nimitz Hwy. 636-1222

CHRYSLER

'75 CHRYSLER Cordoba runs good, \$1100/offer. 239-6545 evenings

CHEVROLET

4 cyl. VEGA station air condition, overhauled Asking \$795. Call 247-5134

79 CHEVROLET Corvette 17000 miles, excl. cond. \$10,200. Ph. 254-5380, AHW.

74 VEGA GT, rebuilt engine, runs good, \$350/offer. Call 235-3059

74 CHEVY Nova, \$500 or offer. Contact Wayne 6 to 5 p.m. at 526-6842

76 CHEVY Impala wagon, maroon, AM/FM, auto, p/b, p/w, p/s, door locks \$1900/offer. Call Harvey 235-8491 eves.

'78 MONZA 4 cyl., auto, steering, AM/FM tape, rally wheels. (BF249) \$2975. WHOLESALE MOTORS. 2900 N. Nimitz Hwy. 636-1222

'75 Malibu Classic Auto, a/c, cruise, bucket seats. BFC007. \$1988. SHELLEY MAZDA WAIPAHU 677-0761

'75 VW Dasher Station wagon, 4 cyl., auto., radio. BCR138 \$2595

'78 CHEVY Chevette 4 dr., 4 cyl., auto., air, radio, 88G629 \$2895

'75 MERCURY Comet 2 dr., auto., p/s, air., radio. AM/FM stereo, radio. 109X881 \$1695

'75 VW Rabbit 2 dr., 4 cyl., 4 spd., radio. AEA842 \$2795

'72 FORD Torino 4 dr., auto., p. s., radio. BCG271 \$495

'75 FORD Torino Station wagon, auto., full power. AM/FM stereo. ANF267 \$995

Prices good Sept. 30 to Oct. 4, 1981

98-105 Kam Hwy., AIEA * Ph: 487-3811

All cars sold as is. Plus tax & lic.

BANK OF HAWAII FIRST HAWAIIAN BANK FINANCING

Military Financing Our Specialty

CHEVROLET

'86 NOVA 4 dr., new tires, new battery, \$700/best offer. Ph. 623-2605

'71 CHEVY 4 dr., \$200, ugly but runs. Call 262-6329

DATSUN

79 DATSUN 210, 4 dr., 4 spd., AJU180 \$3285. Car City 833-3017

WE PAY MORE! MORE! MORE!

FOR CLEAN LATE MODEL CARS, VANS & TRUCKS AT

SHELLY

CORNER NIMITZ & LAGOON

PH. 836-0466

CUTTER FORD

QUALITY USED CARS

'78 FIAT Spyder 4 cyl., 5 spd., AM/FM tape. 88G3485 \$3995

'75 VW Dasher Station wagon, 4 cyl., auto., radio. BCR138 \$2595

'78 CHEVY Chevette 4 dr., 4 cyl., auto., air, radio, 88G629 \$2895

'75 MERCURY Comet 2 dr., auto., p/s, air., radio. AM/FM stereo, radio. 109X881 \$1695

'75 VW Rabbit 2 dr., 4 cyl., 4 spd., radio. AEA842 \$2795

'72 FORD Torino 4 dr., auto., p. s., radio. BCG271 \$495

'75 FORD Torino Station wagon, auto., full power. AM/FM stereo. ANF267 \$995

Prices good Sept. 30 to Oct. 4, 1981

98-105 Kam Hwy., AIEA * Ph: 487-3811

All cars sold as is. Plus tax & lic.

BANK OF HAWAII FIRST HAWAIIAN BANK FINANCING

Military Financing Our Specialty

DATSUN

'89 DATSUN 1200, \$100. Good for parts. Call 235-1193 ask for Dan

DATSUN

'74 Datsun B210
4 dr., 4 spd. 80A582.
\$1688
SHELLY MAZDA WAIPAHU
677-0761

FIAT

'76 FIAT, 4 dr., 131S, 5 speed, AM/FM, a/c. \$1100/best offer. Ph. 623-4910

'76 124 SPIDER
4 seater convertible. 5 spd. stereo. air cond. low mi. (AP5987)
\$4975
WHOLESALE MOTORS
2999 Nimitz Hwy. 836-1222

FORD

'76 PINTO, red, auto., radio, \$500. Ph. 946-9746, 537-5414

'76 Granada
2-dr., auto. a/c. p/s. p/b. 800958
\$2188
SHELLY MAZDA WAIPAHU
677-0761

JAGUAR

ABSOLUTELY BEAUTIFUL
74 XJS (GEN QUALITY) 4 dr. well maintained with only 19,200 mi. Luxuriously eqpt with a 40 mpg. or 60,000 mi. 11 mt warranty on engine, transmission, drive shaft, brakes, steering, front suspension, air cond. & rental & swing. (AW942)
\$10,475
WHOLESALE MOTORS
Ph. 836-1222 2999 N. Nimitz Hwy.

MAZDA

AAA BUY OR LEASE AAAA

'82 MAZDAS
RX7, 626 & GLC
From \$5349 at
HAWAII'S OLDEST MAZDA DEALER
WHOLESALE MOTORS
dba AIRPORT MAZDA
836-1222 2999 N. Nimitz Hwy.

MERCEDES

'88 MERCEDES, 250S, loaded w/accessories including air, AXY346 \$3995 Car City 833-3017

'70 250C, leather, sunroof, rare 4 speed, AM/FM, much new. \$6000 621-9092

PONTIAC

'66 BONNEVILLE convertible, beautiful, loaded, good cond. Sell or Trade 487-5719.

'80 PONTIAC Phoenix, 2 dr. front wheel drive, 4 cyl., A/C, stereo/cassette \$6495 Must sell. 235-3494

TOYOTA

'78 TOYOTA Corolla, 2 dr., 4 spd. BCUE14 \$2695 Car City 833-3017

'76 CELICA GT, auto., air, radio, AM/FM, low miles. \$3200 Call 293-2080 evenings ask for Alan

DODGE

'78 DODGE Challenger 5 spd., loaded, great gas mileage \$5000 or best offer 254-3439 or 257-2722.

'71 DODGE DEMON, auto., power steer., good cond., new paint, \$750/off. 235-2592.

'77 DODGE Aspen, 2 dr., air, 8 cyl., good cond., 433-6631 or 833-0815

FORD

'79 FORD Pinto Runabout auto., p/s, only 16,000 actual miles, BCUE18 \$2995 Car City 933-3017

'79 3 DR. MUSTANG, good cond., \$3000 plus payments. Ph. 239-6526

'78 GRANADA Ghia, \$4000 or offer, good cond., Contact Wayne 8 to 5 p.m. 525-6842

FOREIGN CARS

'80 MASERATI
5 spd., AM/FM, a/c. (BCB043)
\$38,500
VIP AUTO
537-5921 1159 Kapiolani Blvd

MAZDA

'73 Mazda RX3
4 dr., auto., excellent transportation. AFV371.
\$1188
SHELLY MAZDA WAIPAHU
677-0761

MERCEDES

'87 300SEL, Chocolate brown, 4 dr., sedan, velour/vainut interior. Fuel injection, auto stick, beautiful cond. \$5500/best offer 259-5233

MG

'80 MGB, brown/black, Ph. 521-0021 weekdays 947-4181 evenings ask for Dawn.

'80 MGB, last year made, 12,000 miles, blue, AM/FM stereo, cassette, rustproofed, excel cond. \$7200 624-5380.

TOYOTA

'88 TOYOTA Corona, 4 dr., auto. DBN748 \$995 Car City 833-3017

'72 TOYOTA Corolla 4 spd., BDB037 \$795 Car City 833-3017

'74 TOYOTA Corona, 4 dr., like new radials, good cond., \$950 Ph. 254-1401

'88 TOYOTA Corona, \$600/off. Ph. 455-1632.

VOLKSWAGEN

'72 VW Bug with sunroof, rebuilt engine, new upholstery, \$1,500 firm. 621-3867

'70 BUG, auto., good cond., \$950 235-3590 after 3 p.m.

'71 VW BUG, good cond., \$1350/off. Call 235-4732

'79 Dodge Colt
4 spd., AM/FM, real economy. ABC882
\$3488
SHELLY MAZDA WAIPAHU
677-0761

'71 PINTO, fair condition \$250. Call 395-3559 after 4 p.m

'78 FORD Mustang II, 4 cyl., p/s, p/b, air, new tires, excel cond. \$2900. 623-3747

HONDA

'78 HONDA Accord, 5 spd., Michelin tires, \$3200. Ph. 261-1111.

BANK REPOSSESSION.
80 GLC
3 dr. sport 5 spd. sharp (ATA825) \$375 cash down pymt - tax & lic. OAC. Repossession price \$4489.15. See Repossession mgr. \$10,475
WHOLESALE MOTORS
Ph. 836-1222 2999 N. Nimitz Hwy.

'78 280E \$15,775
Auto. full power, air, stereo, alloy wheels, beautiful. (AXV731)

'78 450SE (P21044) \$14,775
Recent maintenance. Equpt. to make driving a pleasure.

'75 450SLC \$18,775
Silver/red interior, fully eqpt incl. sunroof, alarm cond. (P21048)
WHOLESALE MOTORS
836-1222 2999 N. Nimitz Hwy.

OLDSMOBILE

'77 OLDS Cutlass Supreme Brougham, excel cond., Full power/loaded. Must see to appreciate. \$4500/best offer. Call 239-8554 after 6 p.m.

'69 CUTLASS sta. wagon V8, 350 eng., a/c, p/s, p/b good runner. \$725/best offer. 422-2397 after 7

KAILUA TOYOTA

WE BUY CARS

'76 CHEVY
TON PANEL VAN, auto., #167TDF \$2195

'75 CHEVY
MALIBU WAGON, auto., p/s. #BCP530 \$1695

'77 FORD
GRANADA 4 DR. SDN., auto., p/s. #AFX998 \$1495

'74 FORD
ECONOLINE VAN, 3 spd., #489T8B \$595

'77 DODGE
COLT 4 DR. SDN., auto., #BCP122 \$2495

'72 DODGE
DART, 2 dr., auto., p/s. #AEF972 \$695

'72 DATSUN 510
4 DR., 4 spd., #AEP380 \$695

'77 DODGE
ASPEN 4 DR. SDN., auto., #BCP529 \$995

'77 VW DASHER
2 DR. LB, auto., #BDC769 \$2995

'75 SUBARU
2 DR. HT., auto., #STK3804 \$695

'76 Dodge Aspen
Station Wagon, 6 cyl., auto., p/s, p/b, below wholesale. BN1510.
\$1595
SHELLY MAZDA WAIPAHU
677-0761

'78 FORD Fiesta, immaculate, 4 spd., \$2200. Call 488-1321 evenings.

'73 GRAN Torino, gold hrdtp, 2 dr., excl. cond., runs good \$1300. Ph. 922-1262.

'77 GRANADA, whl, 4 dr., air, low mi., \$3100. Call 395-8101

'79 HONDA ACCORD
5 spd., p/b stereo. (ADU318)
\$5095
VIP AUTO
537-5921 1159 Kapiolani Blvd

'73 808
2 dr., 4 spd., AM/FM tape stereo, sharp. (BBN419)
\$1375
WHOLESALE MOTORS
836-1222 2999 N. Nimitz Hwy.

'77 SPIDER
5 spd., radio, tape deck. (AYG190)
\$6795
VIP AUTO
537-5921 1159 Kapiolani Blvd

'73 Maverick
2 dr., 4 spd. BCF449.
\$1488
SHELLY MAZDA WAIPAHU
677-0761

'78 SPIDER
4 spd., AM/FM cassette. (AFB704)
\$4995
VIP AUTO
537-5921 1159 Kapiolani Blvd

'78 PINTO
Station Wagon, 4 cyl., auto., family car. (AXP608)
\$1975
WHOLESALE MOTORS
Ph. 836-1222 2999 N. Nimitz Hwy.

'78 SPIDER
4 spd., AM/FM cassette. (AFB704)
\$4995
VIP AUTO
537-5921 1159 Kapiolani Blvd

'78 PINTO
Station Wagon, 4 cyl., auto., family car. (AXP608)
\$1975
WHOLESALE MOTORS
Ph. 836-1222 2999 N. Nimitz Hwy.

PUBLIC NOTICE
BANK REPOSSESSIONS—OWNER TRANSFERS
NO CASH Needed with approved credit
Ask about our 18 month or 18,000-mi. warranty

'80 DATSUN\$3691.15
Clean 4 dr., economy (8AW597)

'79 BRONCO 4x4\$7993.26
All the extras, sharp (P21130)

'77 COROLLA\$2176.47
4 dr. automatic (86Y009)

'75 PACER 2 dr.\$1583.34
Clean, economical 6 cyl. (BFJ153)

'79 MAZDA GLC\$3175.01
3 dr., auto., radio, clean (80N839)

'78 FUTURA 2 dr.\$3289.52
Clean, 8 cyl., loaded (ACP563)

'78 FORD VAN\$3697.40
Loaded incl. air (98H1CE)

'86 ECONOLINE\$1157.47
Pickup, 6 cyl. (328104)

ALL CARS STORED AT
WHOLESALE MOTORS
dba Airport Mazda Trade In Accepted Financing Avail.
Ph. 836-1222 ALSO OPEN SUNDAY 2999 N. Nimitz Hwy.

CHECK OUT THESE GREAT USED CAR VALUES

'67 DODGE
4 dr. Coronet, auto., p/s, excellent transport car. Lic. AGE250 \$295

'77 OLDS CUTLASS
2 dr., air cond., auto., AM/FM, rally wheels, low miles. Lic. #BEX057 \$3395

'78 FIAT X19
5 spd., alloy wheel, new radials. Lic. #AR634 \$4895

'72 VW BUS
7 passenger, new white paint. Lic. B0F869 \$2695

'78 PLYMOUTH VOLARE
4 dr. premier, a/c, auto., economy 6 cyl., price below wholesale. Lic. ASY659 \$1995

'72 BMW BAVARIA
Excel. cond., auto., air cond., AM/FM, cass. Hurry. Won't last. Lic. BBJ477 \$4995

'77 FORD GRANADA
4 dr. sedan, auto., Stk. V839A \$3595

'76 VW RABBIT
4 dr., std. trans., new radial tires. Buy Now at Wholesale Price. Lic. No. AGP457 \$2595

'79 JEEP WAGONEER 4WD
One owner, air cond., auto. Great for pulling boats or horse trailers. M8K058 \$5995

'75 BUICK SKYLARK
2 dr., air cond., auto., power steering. Lic. AEX405 \$1695

'72 CAD. DEVILLE
Loaded 4 dr., radial tires, nice trans., car eqpt. with propane gas. Lic. ANP488 \$995

'80 FIAT BRAVA
Price reduced. Like new. Only 3,000 miles. Factory air. 5 spd., leather interior. Lic. BFD162 \$5795

18 month/18,000 mile warranty
Jim Siemons Imports
Volvo Fiat
98-075 Kam Hwy., Alea
Opposite Pearlridge 487-7974

BEST DEALS IN WAHIAWA AT SERVICE MOTORS

'76 FORD TORINO
4 dr. sdn. 8 auto. power steering. (APX183) \$995

'75 FIAT WAGON
4 spd. (MLX926) \$995

'75 OLDS CUTLASS
(CBE042) \$1295

'75 FORD GRANADA
Cpe., 6 auto. power steering. (BDJ533) \$1595

'76 FORD GRANADA
Ghia cpe. 6 auto. power steering. (BDJ533) \$1595

'77 DATSUN B210
4 dr. sdn. auto. (8PNE15) \$1595

'78 AMC MATADOR
Wagon 8 cyl., auto. power steering. (PS2570) \$2395

'75 VW BUG
4 spd., sunroof. (8AA026) \$2995

'80 TOYOTA HI-LUX
SRS pickup. 5 spd. (212TCU) \$5495

'81 CHEVETTE
2 dr. cpe. auto. (BEW437) \$5495

'79 CORVETTE
1 res. 4 spd., power steering air power windows. (80J532) \$11,495

SALE GOOD THRU
Sept. 30-Oct. 4
SERVICE MOTORS
in the heart of Wahiawa
622-4195
OPEN SUNDAY
(A Division of Service Pacific, Inc.)

KAILUA TOYOTA

7 DAYS A WEEK
105 ONEAWA ST., KAILUA
261-3321
Good till Oct. 4, 1981

ALL NEW FOR '82

ESCORT 4 DOOR HATCHBACK GRANADA STATION WAGON

Come see them TODAY!
We'll put the lights and the deals on the cars

NOBODY BEATS A HONOLULU FORD DEAL!

HONOLULU FORD
711 ALA MOANA BLVD CALL 531-0491

SPECIALS

'71 PONTIAC LeMans hdtip. cpe., auto., power steer. (APT571) \$295

'71 OPEL
2 dr., 4 spd., (BCE658) \$895

'72 CHEVY NOVA 2 dr. cpe., auto., (BCC166) \$1195

'73 VW BUS, 4 spd., (BRSS30) \$2995

'74 VW BUG, 4 spd., (BEN661) \$2295

'75 DATSUN 710 4 dr., auto., (BT865) \$1895

'76 FORD MUSTANG 2 dr., 6 cyl., 4 spd., power steering. (DBC544) \$2295

'77 PLYMOUTH VOLARE station wagon, auto., power steering. (AAB719) \$1495

'78 CHRYSLER LeBARON hdtip. cpe., auto., power steering, air. (HCJ699) \$2995

'78 VW RABBIT 4 dr., 4 spd., (BCS665) \$2995

'79 MERCURY ZEPHYR 27 hdtip. cpe., auto., power steering, air. (BCS667) \$3795

Financing Available on Approved Credit

TOYOTA CITY
Hawaii's Largest Toyota Dealer

MANY, MANY MORE TO CHOOSE FROM
2310 Kam Hwy., End of Dillingham Blvd.
PHONE: 848-1811
A Division of Service Pacific, Inc.

UNBEATABLE!!

'80 CAMARO Fully loaded, low mileage \$7675

'79 COUGAR Fully loaded \$4775

'75 MERCURY MONARCH 4-dr \$1875

'67 CAMARO 4 spd., Cam headers. Stk. 5618 \$1475

'79 PINTO Stk. 5608 \$3175

'76 PONTIAC GRAN PRIX Loaded \$2895

'78 MAZDA Bright Red \$3375

SPECIALIZING IN 100% FINANCING FOR MILITARY UPON APPROVED CREDIT.

Selling your used car? ... We pay top dollar.

DATSUN of WAHIAWA 821-0762
1912 Wilikina Dr. 621-0761

WAIPAHU AUTO CHEVROLET SALES & SERVICE
Division of Service Pacific, Inc.
Mon.-Fri. 8:30-8:00 671-2871
Sat. 8:00-8:00
Sun. 10:00-6:00
Prices good from 8/30/10/4

'73 VALIANT
4 dr., 6 cyl., auto. p/s. AJA277 \$695

'74 SCAMP
2 dr., 6 cyl., auto. p/s. BJJ562 \$795

'74 BUICK REGAL
2 dr., V8, auto., p/s, p/b, vinyl top. BBT116 \$995

'74 MALIBU CLASSIC
4 dr., V8, auto., p/s, air. BCX562 \$1595

'77 ASPEN
4 dr., V8, auto., p/s, p/b. BGT382 \$1695

'74 DASHER
2 dr., 4 cyl., 4 spd., BJN980 \$1795

'74 COROLLA
4 dr., 4 cyl., auto., BPD051 \$1895

'76 HONDA S/W
4 cyl., 4 spd., APR378 \$2395

'77 FORD LTD
4 dr., V8, auto., air., p/s, p/b, vinyl top. AXV763 \$2595

'79 MONZA S/W
6 cyl., 4 spd., p/s, p/s, luggage rack. BEJ423 \$3195

'79 VW RABBIT
4 dr., 4 cyl., 4 spd., ABJ769 \$3695

'78 CORDOBA
V8, auto., p/s, p/b, air. BCY482 \$3895

'79 FIREBIRD
6 cyl., 3 spd., p/s. AAD418 \$3995

'81 HI-LUX SR-5
4 cyl., 6 spd., p/s. BFF457 \$\$\$\$

WINDWARD

'72 Dodge Van Lic. B43TCF \$299

'69 Buick Gran Sport Lic. BCU754 \$499

'77 Dodge Monaco Wagon Lic. BNF022 \$799

'77 Ford Pinto 2 dr. hb. Lic. BRD668 \$1495

'76 VW Rabbit 2 dr., auto. Lic. AYX749 \$2599

'79 Plymouth Champ 2 dr., 4 spd. Lic. ABY558 \$2995

'78 Mercury Zephyr 2 dr., 6 cyl., auto., air. Lic. BNG918 \$2995

'77 VW Scirocco 4 spd. Lic. BEN801 \$3999

'78 VW Rabbit Diesel, 2-dr., Lic. BDC079 \$4199

'81 Mazda GLC 2-dr., 4 spd. Lic. AAB028 \$4595

This Week's Special!!!

'73 Karmann Ghia Coupe 4 spd., ASW118 \$4995

VOLKS for Windward Folks
725 Kailua Rd. Ph. 262-6576

For Those Who Demand The Finest...

'70 Buick Skylark Auto. 7354 \$295

'73 Mercury Montego Auto. 7367 \$395

'74 Mercury Montego Auto. 7341 \$595

'68 Chev. Van 3 spd., 7363 \$795

'71 Audi 100LS Auto. 7362 \$1205

'75 Ford Pinto S/W Auto. 7301 \$1505

'75 Datsun 4 spd. 7345 \$1605

'74 Ply. Valiant Auto. 7307 \$1715

'76 VW Rabbit Auto. AM/FM cassette. 7348 \$1905

'76 AMC Sportabout Auto., 7323 \$1905

'77 Ply. Volare Auto. 7270 \$1905

'75 Ford Granada Auto. 7264 \$1995

WINDWARD TOYOTA
Prices Good THU Oct. 4, 1981. Subject To Prior Sale.
Corner of Kam and Liliha Hwy.
PH. 235-0088 OPEN 7 DAYS A WEEK

Pick Your LUCKY STAR

'80 FAIRMONT Wagon, brown tan interior, all sorts of options, inspect this & many more wagons. BAU751 \$5995

'76 OLDS Vista Cruiser station wagon, cheapest we've had, roof racks, a/c, fire engine red. BB505 \$2995

'78 FIESTA Hardtop 4 cyl., 4 spd. radio deluxe interior. AAS775 \$3195

'76 FORD VAN Fully eqpt. auto. p/s heavy duty specs. TB1558 \$3195

'77 PORSCHE 924 std. air cond. fire engine red alloys, try & better this price anywhere in town. We have the most desirable Cougar on hand. Financing, Immac. ASC135 \$5995

'78 COUGAR BROUGHAM hdtip. bucket seats, air cond. radials, low mi., the most desirable Cougar on hand. Financing, Immac. AJN619 \$3795

'79 TRANS AM Special Collector Edition. Power windows, air cond., mag. ABS/FM stereo, fitted. Immac. AUJ305 \$5995

'72 PONTIAC VERTIGA hdtip. bucket seats V8 auto. power steering mag. stereo cassette. Shelly's Super Dupor Saturday Special. ACY801 \$1395

'78 VW BUS Orange and tan w/black interior, auto. sunroof, a proven product. AXJ329 \$4495

'80 RABBIT 2 dr. 4 spd. auto. economical, low miles. ANZ259 \$5995

'79 MAZDA RX7 GS 6 spd., sunroof alloy wheels, canopy yellow. BCD158 \$6995

'78 BMW 280i, auto., air cond. stereo, cassette, mag. alloy, extra equipped with fog lamps, a great collection of BMW cars. ARW782 \$8995

Buy From The Experts

SHELLY CARS
Corner Nimitz & Lagoon Open THU 8 PM Everyday
836-0466

New tax bill expands retirement accounts

HQMC, WASHINGTON — Marines and government employees will be eligible for tax-protected Individual Retirement Accounts, beginning Jan. 1, 1982, thanks to the new tax bill signed by President Ronald Reagan, Aug. 10.

Currently, participation in IRAs is limited to people not covered by employer-sponsored retirement plans. Individuals without employer-sponsored retirement plans have been able to contribute as much as 15 percent of their income, up to an annual maximum amount of \$1,500.

THE NEW BILL WILL allow individuals already covered by an employer-sponsored retirement plan to participate in IRA, plus it

removes the 15 percent limitation and increases to \$2,000 the total amount individuals can contribute annually.

Monies placed in IRA are non-taxable and the interest earned in the account is also non-taxable. This results in the interest rates for an IRA being compounded on a higher money base.

Funds contributed to IRAs are tax-exempt until used. Individuals can elect to continue placing money in the program for as long as they wish. However, they must begin withdrawing money by the time they reach 70 and one-half years old.

INDIVIDUALS CAN begin withdrawing money when they are 59 and one-half years old

without paying any penalty tax for early withdrawal. People who withdraw money before they reach that age must pay income tax on the money they withdraw, plus an additional 10 percent early withdrawal penalty tax.

Those participating in the program should note that IRAs are tax-exempt while the money remains in an account; however, once it is withdrawn, it is considered taxable income.

According to officials, many people using IRAs are over 65 when they withdraw money. Therefore, the tax laws allow them extra tax credit, simply because of their age.

A person eligible for IRA could also open accounts for their

spouses. In the past, persons opting for spousal contributions were required to divide their contributions equally and there was a maximum ceiling of \$1,750, or \$875 in each account.

THE CEILING FOR combined accounts will be increased to \$2,250 beginning Jan. 1, and the requirement for evenly dividing contributions will be dropped. For example, a husband could deposit \$2,000 in his account and \$250 (or less) in his wife's account.

Whether or not to participate in an IRA is an individual decision. There are several types of IRAs available and individuals interested in opening one should check them thoroughly to find the one that best suits their needs.

TIRED OF WEEDS?

CALL ...
488-7047

HOKUAHI LAWNS

WE SPECIALIZE IN:

- NEW LAWN INSTALLATION
- LAWN RENOVATION
- LANDSCAPING
- SPRINKLER SYSTEMS
- SPRINKLER REPAIRS
- COMMERCIAL PROPERTY MAINTENANCE

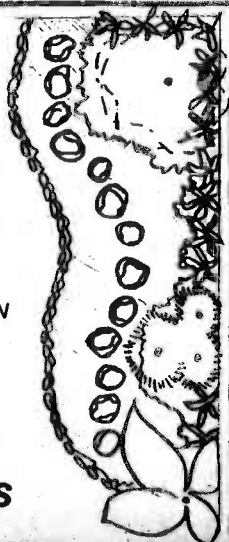
FREE ESTIMATES

ISLAND WIDE SERVICE

HOKUAHI LAWNS

AND SPRINKLER SERVICE
488-7047

HOURS
8-5 M-F
9-12 SAT.
CLOSED SUNDAYS



DON'T MOVE ... IMPROVE!

DO-IT-YOURSELF CONCRETE PROJECTS MADE EASY WITH



CONCRETE

- FREE TRAILERS
- SAVE TIME
- SAVE MONEY
- WE'RE OPEN 7 DAYS
- CONVENIENT U-CART CONCRETE



C & P Home Center

143 Hekili St.
Kailua

PH. 262-8118

WEED & BUG PROBLEMS?

In Your Lawn

Call LAWN SYSTEMS for a FREE lawn analysis ph. 488-7721

COMPREHENSIVE PROGRAMS AND INSTRUCTIONS FOR THE USE OF:

- Fertilizers
- Weed Control
- Bug Control
- Soil Amendments



STORE HOURS:
M-F 8:00-5:00
SAT. 9:00-3:00
SUN. CLOSED
Behind Culler Ford
30-888 HEKAPUA ST. • Also • PH. 488-7721



Considered the BEST by Popular Mechanics Magazine

SKYLIGHTS THAT OPEN!



The Most Energy-Efficient Ventilating Skylight

Enjoy Natural Light and Air

- Free Air Conditioning — Creates natural flow ventilation
- Natural Light — Dramatically changes your interior lighting
- Best Quality — Double-Domed Copper Flashed
- Adaptable to all roof conditions
- Commercial & Residential
- Locally stocked in Clear and Bronze tones

Available in Clear and Bronze Tones

Distributed Exclusively by

SKYLIGHTS of HAWAII

P. O. BOX 347 • 239-6277 • KANEHOE, HI

ARE YOU TAKING CARE OF YOUR WOOD SHAKE ROOF?

Check for these problems:

- * Rusting nails & flashings
- * Exposed tar paper
- * Worn or missing shakes
- * Mildew & rot

We provide a complete maintenance service that can save your roof

- * Completely reroil entire roof
- * Make all necessary repairs
- * Pressure wash preparation
- * Wood Preservation treatment

IS IT TOO LATE?

If you do have to re-roof — eliminate future problems with original quality:

- * Aluminum or stainless steel fasteners & flashings (lasting quality)
- * Pre-treatment or spray wood preservatives (Prevention is the best method)
- * Inorganic roofing paper (if it won't burn or rot it won't leak)
- * 8 inch weather exposure (3 layer thickness spells less maintenance & long life)



SPECIALISTS IN SHAKE TREATMENT RE-ROOFING REPAIRS

FREE ESTIMATES Island Wide (Lic. #C8212 - Member HRC)

CALL 261-8282

DO IT NOW

Offering a full range of flooring products:

- Ceramic & Decorative Tile
- Hardwood Flooring
- Sheet Vinyl

DO IT YOURSELF

- entryways
- living rooms
- kitchens
- countertops
- baths
- lanais
- garden nooks
- pools
- wall murals

Also Decracylic Roof Tiles



HAWAII PACIFIC SALES

120 MOKAUEA ST.
845-9581

ORGANIC COMPOST

(Composted Cow Manure and/or Chicken Manure and Wood Shavings)

Organic Soil Conditioner

Available in bags or bulk

Produced By

50th State Dairy Farmers' Coop

For more information or to place an order

Call 677-9103

Or visit your favorite Garden Shop

Have Permit for Neighbor Island Shipment

SPACEMAKERS CONSTRUCTION CO., INC.

The creators of liveable Space For You and Your Family is Now Offering:

- *Free Design Consultation
- *One-year Guarantee
- *All Permits
- *Free Estimates
- *Plan Service
- *24 Years of Experience

*Bonding, Insurance & License (BC10861)

Our general contracting services allow us to fully supervise all work from start to finish with minimal inconvenience to your family. Our Services include:

- *Interior and Exterior Remodeling
- *Additions and Lanai Enclosures
- *Kitchens and Baths
- *Improved Ventilation & Skylights
- *New Doors and Bookcases

Call Bob Riddle 538-1981

for an appointment to increase your living comfort.

We Excel In Excellence. Economically!