

HAWAII MARINE

Voluntary payment for delivery to MCAS housing/\$1 per four week period.

VOL. 11 NO. 50

KANEIHE BAY, HAWAII, DEC. 15, 1982

TWENTY PAGES

Federal employee's idea pays off

by Sgt Marie Woods

Ideas can mean big bucks, if they're submitted through the Armed Forces' Beneficial Suggestion Program.

The program is part of the Federal Incentive Awards Program for employees of the U.S. Federal Government. It's the only one available for civilian and military persons alike, according to Patrick Brown, employee relations specialist of the Civilian Personnel Office here.

One federal employee, Steven Fujiyoshi, shop planner of Facilities Department, had an idea for treatment of chill and cooling tower water in air condition and refrigeration systems. He submitted his beneficial suggestion, or "benny sug," in April '81 when he was an air condition mechanic.

Approximately 24 air condition

and refrigeration units aboard the air station use water as either a cooling or condensing medium. The efficiency of a unit decreases gradually as the amount of dissolved solids accumulate in the system. If the level of dissolved solids is undesirable, treatment of the water would be started by using the proper chemicals.

When Fujiyoshi made his suggestion, a private chemical company did the testing and treatment. He felt the Facilities Department could save a considerable amount of money if it bought the proper testing equipment and trained their personnel to use it.

Making its way through the proper channels, his "benny sug" was adopted in November '81. The air station saved \$59,590 that year and awarded Fujiyoshi \$1,000.

"I'd tried my idea on a few air

condition units here," said Fujiyoshi, "and it worked. So I was confident that my idea would be approved. As for the award money," he continued, "that sure came at a good time with Christmas around the corner."

A person who has a brainstorm for improving his work section, or any area at the air station, should submit it, encourages Brown. They can do so by filling out a suggestion form explaining the problem, difficulty, or circumstances that prompted the suggestion; the suggested change; and where and how it can be used, what it will accomplish, and how it will benefit the government in terms of tangible savings, if possible.

The form will be screened by the supervisor of the awards program for accuracy and clarity. An evaluator will check it to see if the idea actually constitutes an improvement. "The evaluator is someone who has expertise in the

job field the 'benny sug' is submitted for," said Brown. If the evaluator says it's feasible, the suggestion is presented before the Incentive Awards Committee, comprised of eight or 10 military and civilian people. The committee will either recommend the idea or disapprove it. If recommended, the suggestion is sent to the commanding officer of the air station.

"The CO has the authority for cash awards up to \$2,500," said Brown. Should the award be more than that, the beneficial suggestion is forwarded to Headquarters Marine Corps.

The Armed Forces' Beneficial Suggestion Program provides U.S. Federal Government employees an opportunity to gain recognition and monetary reward for their initiative, constructive imagination, and ingenuity. It's a program where a person has nothing to lose, but a lot to gain.



BENEFICIAL SUGGESTION WINNER — Steven Fujiyoshi, shop planner of Facilities Department here, checks the pressure rating of suction and discharge gages inside a refrigeration system compression room.

Archaeologist reads soil to explain the past

by Sgt Corrina Martell

Like historical books and pictures, the earth and its contents also tell a story.

To help tell this story and explain the behavior of previous inhabitants of Mokapu Peninsula, Dave Tuggle, staff archaeologist with the Pacific Division, Naval Facilities Engineering Command, has been working in the air station soil for almost a year.

Tuggle said that the cultural inventory he has been undertaking is an attempt to identify the full range of remains for the history of the area. This history includes ancient Hawaiian to the military era. The inventory is also intended to meet the requirements of federal law for the identification of historical and cultural property of federal agencies.

"Federal agencies that have land management responsibilities need to know what they have on their hands," said Tuggle. "They need to know which things need to be preserved, and which only need to be recorded and not preserved."

"I've done surveys at Kansas Tower, Fort Hase, the area west of the runways, the slope between the golf course and officers' housing, and French Battery. I will also be studying the Nuupia Ponds area."

Tuggle, who works at the air station two or three days a week, explained that he is following up on a primary recommendation from the Chiniago Report to complete the basic cultural resource inventory for the air station.

The Chiniago Report, completed in February 1982, involved reconnaissance surveys and ethnohistoric assessments of the

air station, and recommended follow-up work.

Diane Drigot, Environmentalist at the Facilities Department, explained that the archaeological work is funded by the air station, but the workers are supplied by PacDiv.

"Since we're a small installation," said Drigot, "we draw experts from PacDiv to help us. If PacDiv does not have the time or in-house staff, they go out on contract to find someone for us."

Tuggle said that his work involves the basic evaluation of the presence of an undisturbed historical site.

"I simply view the sand through a coring device which enables me to determine if there is a historical site there," said Tuggle. "I am able to determine this by looking at samples of the earth. I then make recommendations concerning that area."

The coring device Tuggle uses, is a tube-like piece of equipment which removes a cylinder sample of the earth.

In addition to this device, Tuggle also uses a shovel. "On a larger scale, I may use mechanical equipment," said Tuggle. "The kind of work I'm doing is easily done by myself."

Tuggle said that he found one major structural Hawaiian site buried below a sand dune that had not been discovered before.

"We usually leave sites the way they are," said Tuggle. "There is only a limited amount of excavation for the interpretation of a structure. Excavation is a very expensive process and fairly complicated, because you're destroying something as you try to discover it. The government wants to protect historical sites."

Tuggle said that there are two major burial areas on the air station — Mokapu Dunes Area and the Ulupau Dunes section of Fort Hase beach.

"There's a problem with some archaeological remains," said Tuggle. "At the Ulupau Sand Dunes section of Fort Hase, I found places that were disturbed by vehicles which strayed off the main path and caused erosion. Some people who wander along may dig into the exposed burials. Also, many archaeological sites are sensitive to damage such as looting and vandalism."

Tuggle said that one of his interests aboard the air station is historical valuables found from the military era.

"I'm curious to see if there's anything left from Fort Hase, which used to be an Army post," said Tuggle. "Between the Hawaiian occupation and the military use of the area, there was a long period of ranching. I'm also interested in the structures from that period."

Tuggle explained that he is not a historian, but that as an archaeologist he may need to go through history to find out about human behavior.

"We attempt to see what is left from the human behavior of before," he said. "I'm in the business because it adds another dimension to life. The more you know about an area, the richer it is and the greater your appreciation of cultural things."

When Tuggle is finished with his work aboard the air station, he will submit a preliminary report to the air station. This report will serve as a basis for continuing historic preservation responsibilities in future years.

Recommendations from the report that are adopted by the air station will be incorporated into the Station's Long Range, Multiple-Use Natural Resource Management Plan, according to Drigot.



WORKING WITH THE EARTH — Dave Tuggle, aboard the air station. Tuggle has been working staff archaeologist with the Pacific Division, almost a year to identify historic sites here. Naval Facilities Engineering Command, uses a (Photo by Chris Taylor) trowel and sieve as he works on some sand dunes

Marines challenge Beirut roads

by Sgt Christopher Grey

BEIRUT, Lebanon (Delayed) — Wheeling a Marine vehicle through the battered streets of Beirut is good experience for the Demolition Derby driver. For the Americans who man the jeeps and trucks supporting the U.S. units of the multi-national force, driving is an exercise in survival.

At daybreak, Marine drivers roll carefully out of the American compound, observing every rule and regulation of their training. When the front tires touch the madcap streets of Beirut, there's a dramatic metamorphosis and more basic instincts prevail. On these mean Mideast streets it is survival of the fastest and aggressiveness is the name of the Lebanese driving game.

In a war-torn city where traffic signals, signs and laws have become extinct, the Leathernecks must "blow the horn and go for broke."

"It's a free-for-all here," explained Sergeant Gary Stanton, 30, of Orlando, Fla. "New Marines that have come aboard must go through a certain amount of culture shock. Everything they've been taught in the past is almost worthless. Aggression and a loud horn is the answer, if they don't learn that, they will sit in traffic all day," he commented. Stanton is one of a growing number of veteran Marine drivers who are learning to support the American mission despite the chaotic traffic situation here.

Daily the drivers shuttle not only their fellow Marines, but Marine supplies and a growing number of visitors around this bombed-out city. "I have carried around people that I never thought I would see, much less drive for," emphasized Lance Corporal Antonio Ciliberto, a 19-year-old driver from Ambler, Penn. Wide-eyed and clutching their seats in fear, everyone from

well-known newscasters to congressman, have had their chance for a rollercoaster ride through Beirut's streets in Marine vehicles.

Mercedes Benz autos are as common as Chevrolet's here. Hundreds of them fill the streets each workday, racing to their final destinations. Driving on the right side of the road seems to be more of a loosely-observed custom than a rigid rule in Beirut.

"As a rule, we try to stay on the right side of the road, but you always have to be on the alert for hotdogs who feel they can make better time challenging the oncoming traffic head on," explained Stanton.

Aside from daring drivers who seem bent on suicides, Marines are faced with the perils of shell holes, orphaned animals and distracted pedestrians. These hazards keep both drivers and passengers on the edge of their jeep seats most times.

"You just have to be constantly aware of what is around you," explained Ciliberto. "When you come to a so-called intersection, the person who looks the meanest and moves the fastest has the right of way."

Although the Lebanese police are returning to the streets here, it is rare to see one risking his life by challenging traffic violators. "We just don't see any cops on the roads," Stanton said. "I'm sure there are some outstanding policemen here, but a guy could get killed standing in one of these intersections."

While intimidation and aggression may be the rules of the Lebanese road the last thing Marine drivers want is to get involved in a fender-bender. "We really have to be careful," concluded Stanton. "The last accident I saw between a taxi driver and another civilian was solved with no-fault, 45-caliber insurance."



A Marine Corps truck rumbles down a Beirut, Lebanon, street at dusk. (USMC photo by SSgt. Stan Pederson)

Precautions prevent holiday mishaps

by Sgt Corrina Martell

The holiday season is here, and to keep it merry and bright, some safety precautions should be followed.

When selecting a Christmas tree, find one that has not dried out from prolonged storage. When too dry, tree branches are brittle and shed needles easily. Stand the tree in water until ready for use.

The larger the tree, the greater the hazard, so do not get one any larger than needed.

Just before setting up the tree, saw off the trunk at an angle at least one inch above the original cut.

Place the freshly cut tree trunk in water and keep the level of water above the cut the entire time the tree is indoors. (Check water level at least once a day for absorption and evaporation.)

Do not use candles on the tree or nearby where there is any chance for an open flame to contact the tree or combustibles piled beneath the tree. Use only electric lighting sets that bear the UL (Underwriters Laboratories) label.

Check lighting sets before using for frayed wires, loose connections, and broken sockets. Be sure the fuse on the electrical circuit used is not over 15 amperes. Cord sets with a fuse on the plug,

bearing a UL label, are available.

Do not plug too many cords into one outlet, and make certain that all tree lighting is turned off before retiring or leaving the house.

Do not use electric lighting sets on artificial trees made of metallic materials.

Christmas wrappings should not be allowed to accumulate in the home; place them in a metal covered trash can and dispose of them as soon as possible. Noncombustible materials,

such as metal and glass, should be used to decorate the home for Christmas wherever possible. When combustible materials must be used, be sure they are "flameproofed," particularly if they are to be anywhere near the tree.

Untreated cotton batting, paper, and certain cloth costuming will ignite easily and burn with great intensity unless they are "flameproofed." Santa Claus whiskers have caused Christmas tragedies; be sure they are "flameproofed."



Pacific Chiropractic

Dr. Jeanne C. Michaels / Dr. Jeffery B. Ronning

CHIROPRACTORS
"for the finest in Chiropractic Care"

261-0831

J.C. Michaels, D.C. J.B. Ronning, B.A., D.C.

X-Ray Facilities, Physical Therapy, Nutrition
Auto and Industrial Accidents—
No Charge For Consultation

Wremco Bldg., #207, 602 Kailua Rd., Kailua

A CHRISTMAS SPECIAL

SLEEP-IN LENSES \$185 **STANDARD SOFT LENSES \$85**

Wear up to 2 weeks without removing. Includes lenses, care kit, solution & case, all follow-up visits. Same day service in most cases.

Offer expires Dec. 24, 1982

Dr. TIM TOGIKAWA Downtown 1145 Union Mall 536-6226
Dr. EDWIN ENDO Pearl City 98-1238 Kaahumanu St. Suite 301 487-7907

Jule's PIZZA

RESTAURANT KAILUA, HAWAII

ITALIAN FOOD—SANDWICHES

CALL FOR A FREE MENU

DELIVERY SERVICE
KAILUA - KANEOHE AREA
PHONE 261-9070

Jule's Restaurant located at Kailua Holiday Mart
OPEN: Sun.-Thurs. 11 A.M.-9 P.M.
Fri. & Sat. 11 A.M.-11 P.M.

GIVE YOUR FAMILY A COLORTYME CHRISTMAS

RENT TO OWN
NO CREDITORS CHECKED
NO SECURITY DEPOSIT
NO LONG TERM OBLIGATION
SERVICE AND DELIVERY INCLUDED

2ND WEEK SPECIAL 99¢
On TVs and Stereos. Come in for details.

WIN WHAT YOU WANT
Come see the 1983 Cadillac Coupe de Ville on display Tuesday, December 21 from 10 a.m.-3 p.m. Win what you want.

COLORTYME TV RENTAL

STADIUM MALL MON.-SAT. 10-7 **487-6421**

Holiday Inn AIRPORT

TLA RATES FROM* \$3500 + tax

*Pool view rooms slightly higher

MAKE US YOUR HOME AWAY FROM HOME

Military • Gov't. • Kamaaina • Day Rates Available

For Reservations and Information call **836-0661**

Holiday Inn HONOLULU AIRPORT
3401 Nimitz Hwy.

The Microwave Oven That Makes You a Genius!

Panasonic's NE-9930 adds a new dimension to microwave oven cooking... it's convection cooking for excellent baking or browning. Cook by microwave, convection or an automatic combination of both. With the NE-9930, every meal you cook will be a hit and make you a Genius.

Available at your military exchange.

Panasonic
just slightly ahead of our time

NAPA SCHUMAN Automotive, Inc. DBA

Dedicated to Quality, Service, Convenience and Competitive Prices

QUEEN AUTO PARTS
555 Cooke St. 536-3488

★ **HAWAII KAI AUTO PARTS**
Koko Marina Shopping Center 395-4402

★ **EWA AUTO PARTS**
Ewa Beach Shopping Center 689-8356

AIKAHI AUTO PARTS
Aikahi Shopping Center 254-3535

★ **KAILUA AUTO PARTS**
119 Kekili Street 262-8146

FLEET AUTOMOTIVE AUTO PARTS
Campbell Industrial Park 682-2027

★ **KING AUTO PARTS**
640 North King St. 841-3381

★ **AIEA AUTO PARTS**
98-390 Kam Highway 489-1936

SHAFTER AUTO PARTS
1404 Middle St. 847-4691

★ **OPEN 7 DAYS A WEEK**

MACHINE SHOP SERVICE

HAVE A NAPA CHRISTMAS!

NAPA PARTS STORE PLAY SET \$996*

This realistic play set includes four die cast metal vehicles — a scale model NAPA panel truck, Firebird, Corvette and pick-up truck. Also: easily assembled NAPA parts store, parking lot, signs, roads and even a phone booth. Designed for endless hours of safe, fun-filled play time! (1814-8241)

GIFTS FOR DAD
REAR VIEW MIRROR **736** Reg. 9.41

GIFTS FOR DAD
RIVET KIT **692** Reg. 8.85 SALE

GIFTS FOR DAD
AUTO REPAIR MANUAL **779** Reg. 10.95 SALE

GIFTS FOR DAD
SPLASH GUARDS SALE **499** Reg. 7.99

NAPA #770-2706 **NAPA** #799-1404

The Hawaii Marine is an unofficial newspaper published every Wednesday by RFD Publications, Inc., 46-016 Alala St., Kaneohe, Hawaii 96744, in the interest of U.S. Marine Corps personnel in Hawaii. All news copy is prepared in the Joint Public Affairs Office, Marine Corps Air Station, Kaneohe Bay, Hawaii 96863, 257-2179.

Copy must be submitted no later than noon Thursday for the following Wednesday publication. Hawaii Marine solicits contributions of information and photographs from all Marine Corps organizations. However, it reserves the right to edit or rewrite material submitted. All advertising is arranged by the publisher, RFD Publications, Inc., telephone 235-5881. Circulation is 8,000.

Everything advertised in this publication must be made available for purchase, use or patronage without regard to race, creed, color, national origin, age or sex of the purchaser, user or patron. A confirmed violation or rejection of this policy of equal opportunities by an advertiser will result in the refusal to print advertising from that source.

HAWAII MARINE

At a glance

Vending activity

The repair Department is now open Monday through Saturday from 8 a.m. to 4:30 p.m. A code-phone is operating 24 hours a day, seven days a week for any "out of order" calls on machines they service. The telephone number is 257-2426.

Barber Price Increase

The price for a regular haircut at Marine Corps Exchange Barber Shops will go up from \$2.25 to \$2.50 starting Sunday, Dec. 12, 1982. The cost of other barber services will also increase slightly. This is the first price increase since September 1979 — over three years ago.

Energy awareness

Deck the halls with boughs of Holly, but leave the exterior Christmas lights in the closet.

That's the message contained in Air Station Bulletin 1700, dated Dec. 6. The reason? The air station is promoting a sound energy awareness program.

Although exterior Christmas lighting in housing and unit areas is prohibited, there will be a lighted tree on Ulupau Crater. In the name of energy conservation, it will be the only lighted exterior Christmas display and will be conservatively lighted.

Other areas decorated for Christmas are the main gate and the light poles at the main entrance, Mokapu and Lawrence roads.

The main gate will be decorated with a large banner, a large Holly tree and a garland (unlighted) on the guard shack.

The light poles on Mokapu Road from Cushman to E Street, on Lawrence Road from the entrance to the housing area to Mokapu Road and the entranceway from the main gate to the Enlisted Club will be decorated with pole wrap and pole trim kits.

Rent-All Center

The Marine Corps Exchange Rent-All Center's operating days will be changed effective Monday, Dec. 20. Under the old schedule the Rent-All Center was closed on Tuesdays and Thursdays. The new schedule will have the center open Tuesday through Saturday and closed on Sunday and Monday. This schedule is the same as the Family Housing Self Help Unit which is located next door to the Marine Corps Exchange Rent-All Center. Operating hours will be 10 a.m.-6 p.m. Tuesday through Friday and 8 a.m.-6 p.m. on Saturday.

The Rent-All Center offers a full selection of yard care equipment such as lawn mowers and weed-eaters at very reasonable prices. Also available for rent are color and black and white televisions, mini refrigerators, air conditioners, professional carpet cleaning equipment and electric fans. It is located in Building 460 near the 7-Day Store, Marine Corps Air Station, Kaneohe Bay.

For more information contact George Budd, the Rent-All Center's manager, at 254-3230.

Math Institute

The Mathematical Health of the Elementary School Child is the title of a workshop

to be given at the Knitlon Public Library at 7:30 this evening. The workshop is intended for parents and teachers of elementary school children, but is open to the general public. It is provided as a public service by the Hawaii Malei Mathematics Institute, a non-profit organization for improving personal educational health in mathematics throughout Hawaii. This is the first in a series of three free workshops. It will be followed on succeeding Wednesday nights by sessions on the mathematical health of adolescents and of adults. Seating is limited, so please call ahead. For reservations, call the Hawaii Malei Mathematics Learning Clinic at 261-8106. Should you forget that number that may find the Malei Clinic listed

under "Tutoring" in the yellow pages.

Dance classes

Dependent Recreation may offer County Western Dance classes. Want to learn the Texas Two-Step and other popular dance? Interested? Call Kate in Special Services, 257-3520/3108.

Housing problems

The Installation Housing Referral Office is available to any military personnel with off-post housing problems. Members can call or report to either the Housing Referral Office on-post or the main Housing Referral Interservice Coordinating Office located at Fort Shafter, telephone 438-2801, for assistance.

Housing inspection

Service members are requested to urge landlords to conduct a joint check-out inspection upon written notice to terminate off-post housing. Although inspection is not required by the Landlord-Tenant Code, joint inspections provide the positive approach to assure maximum return of security deposits.

New main entrance

Tripler Army Medical Center's new main entrance on Ward Road opened Monday. The long awaited opening of the new entrance loop drive and lobby means patients may once again be off-loaded at the front door. Immediately inside the lobby, the information desk staff

and a new hospital directory will help patients and visitors with directions throughout the medical center.

Just a few feet down the hall from the new lobby is the center bank of elevators which provide access to all floors in the main building.

Repair program

HONOLULU — Grace Metal Products, Inc. is conducting a voluntary repair program on the "Swyngomatic Converta 3-in-1" cradle, model 5900, manufactured from September 1979 through July 1980. The cradle's masonite bottom of some units was improperly positioned during assembly and provided insufficient support resulting in the children falling to the

ground. The vendor corrected the program on units made after July 1980 by adding floor support rods to the bottom board. This item has been carried only in the AAFES Mail Order Catalog and it is not in the regular AAFES stock assortment. Affected units are not in the current AAFES inventory.

Customers owning the affected units may return them to their nearest exchange for a refund or the stores will assist customers in obtaining the support kit.

The support kit consists of two steel support rods, fasteners and assembly instructions. Affected units are those which do not have two metal rods to support the bottom board.

FAMILY CHIROPRACTIC CENTER INC.

KANEOHE 235-6677



Dr. George F. Clemens
B.S., D.C.



Dr. Lawrence J. Connor
M.A., D.C.

CHIROPRACTIC... A NATURAL SOLUTION TO HEALTH PROBLEMS

- Headaches
- Bursitis
- Whiplash
- Muscle Spasms
- Neck Pain
- Numbness in Hands & Feet
- Backache
- Nervousness & Tension
- Shoulder Arm Pain
- Pinched Nerves

Open 6 Days a Week: Mon.-Fri. 8:30 a.m. to 6:30 p.m.
Sat. 8:30 a.m. to 1:30 p.m.
2 Doctors • 3 Chiropractic Assistants

HONOLULU FEDERAL SAVINGS & LOAN BLDG.
45-114 Kam Hwy., Suites 200 & 200A

Ombudsman



If you have a question or complaint about the content of the Hawaii Marine — or a suggestion or compliment — please telephone our Ombudsman, Gunnery Sergeant Don Gilbert, at 257-2178.

Gilbert, the Joint Public Affairs media operations chief, will endeavor to answer your questions and complaints through impartial investigations. He will accept calls between 7:30 a.m. and 4:30 p.m.

Commissary holiday hours

The Commissary officer called to let us know that the Commissary Store holiday hours have changed. The Commissary will be open on Dec. 24 and 31 from 9:30 a.m. until 2 p.m. for shoppers' convenience.



25% OFF

ON EYEWEAR,
LENSES, FRAMES,
SUNGLASSES

STANDARD SOFT CONTACT LENSES

\$79

CONTINUOUS WEAR SOFT LENSES

\$179

Fees include lenses, care kit, follow up care by Dr. Dean and 30 DAY TRIAL PERIOD.

Effective Until December 18, 1982.

COMPLETE PROFESSIONAL VISION SERVICES
DEDICATED TO QUALITY AND SERVICE IN VISION CARE

Dr. Charles Dean
Optometrist

KAILUA
139 Hekili St.
261-9735



HAWAII'S LARGEST CHRISTMAS STOCKING GIVEAWAY!

WIN! A GIANT 10 FT. CHRISTMAS STOCKING

\$300.00

GIFTS INCLUDE AM/FM CASSETTE RADIOS, ELECTRIC FANS, TOTE BAGS, TOYS, GAMES, STEREO SPEAKERS, AND MUCH, MUCH MORE!

DRAWING TO BE HELD AT 1:30 PM ON THURS., DEC. 23, AT THE KAM SWAP MEET

ENTRY BLANKS AVAILABLE AT ALL CONSOLIDATED THEATRES, KAM SWAP MEET AND CONSOLIDATED WAREHOUSE. NO PURCHASE REQUIRED. NEED NOT BE PRESENT TO WIN.

JOIN US FOR OUR WEEK LONG CHRISTMAS CELEBRATION FROM SAT. DEC 18 - FRI. DEC 24 AT THE KAM SWAP MEET

STOCKINGS ON DISPLAY AT KAM "SUPER" SWAP MEET

OPEN WED., THURS., SAT., SUN. AND HOLIDAYS • 7AM TO 3PM

& CONSOLIDATED WAREHOUSE

OPEN MON.-FRI. 8AM TO 5PM • SAT. 8AM TO 3PM

BRING 'EM HOME FOR THE HOLIDAYS.




When your family comes home for the holidays, you'll want to serve 'em refreshment that's as special as the occasion.

So when you do your holiday shopping, pick up plenty of Coke, TAB, and Sprite in all your favorite packages. And bring 'em home...for the holidays.



SAVE 35¢

OFF YOUR NEXT PURCHASE OF COKE, TAB OR SPRITE IN SIX 12-OZ. CANS.

OFFER EXPIRES: January 31, 1983
ONLY ONE COUPON PER REQUIRED PURCHASE

NOTE TO DEALER: For each coupon you accept as our authorized agent, we will pay you the face value of this coupon, plus 7¢ handling charges, provided you and your customers have complied with the terms of this offer. Any other application constitutes fraud. Invoices showing your purchase of sufficient stock to cover all coupons must be shown upon request. Void where prohibited, taxed or restricted. Your customer must pay any required sales tax and bottle deposit.

Cash value 1/20 of 1¢. Redeem by mailing to Coca-Cola Bottling Co. of Honolulu, P.O. Box 30068, Honolulu, Hawaii 96820. OFFER GOOD ONLY IN AREA SERVED BY: Coca-Cola Bottling Company of Honolulu.

STORE COUPON

*Coca-Cola and "Coke" are registered trademarks which identify the same product of The Coca-Cola Company. "TAB" and "Sprite" are also registered trademarks of The Coca-Cola Company.

Material side of Christmas blinds meaning

by Father Newton

Each year the shops and bazaars of our towns and cities greedily dress up their windows and stores several weeks in advance of Christmas. Indeed each year they seem to "open" the Christmas season a week or so earlier than the year before... the reds and greens, the reindeers and santas, the carols and tinsel all sound their clear call, "come, see me, try me... buy me now (pay later)." Like the legendary Lorelei these enticing "voices" of the Christmas season lure many an unsuspecting person to trouble on the rocks of financial difficulties.

It is too, too bad that this accent on the material side of Christmas has often blinded some to the real job and beauty of the birth of Christ. The star of Bethlehem is sometimes obscured in the neon glos of our sparkling, shimmering shops. The child who was once lost in the temple, is sometimes lost today in the tinsel.

God, too, eagerly awaits the coming of Christmas each year. He waits, almost impatiently for the opportunity to come anew into our lives. He could have come in any form, shape, or guise. He chose to come to us in the most lovable form of all, the form no loving heart can resist... A baby, not just any baby but the most beautiful, most irresistible child the world has ever seen. His infant hands clasp and unclasp as if, already, He has begun his work of snatching souls from the fires of hell. His infant gaze lovingly embraces the adoring shepherds and draws their hearts to His. That heart that encompasses all mankind reaches out to us today.

O! Infant Saviour, let not our hearts be hard and cold. Let not cruel indifference turn us from the stable to the saloon, from the crib to the cha-cha, from Your love to the lusts of the world. Come, Infant Lord, Redeemer, Thou Promised One, awaited of the ages... melt these hearts of stone: make them like unto Thine own...

May peace, joy, and love from the bounty of Christ be yours this Christmas and throughout the new year.

SPEAKER TRUCKLOAD SALE

A major speaker manufacturer has asked us to liquidate all current stock of the below illustrated speakers. Brand names may not be mentioned in our ads as per manufacturer's request. The liquidation price is below wholesale due to some minor cosmetic scratches. All speakers sound perfect and are guaranteed for 5 years. (Hurry Limited Quantities)



- Adj. for Midrange & High Range
- 110 Watts RMS
- Removable Grill

Sug. Retail \$349 ea.

\$99 ea.

- 12" Woofer
- 3" Tweeter
- 5" Midrange
- 65 Watts
- 25" High, 15" Wide



\$69 ea.

- 8 OHMS Impedance
- 1/4" Wood Cabinet
- Removable Grill



- 2-12" Woofers
- 5 1/2" Midrange
- 3 1/4" High Force-Super Tweeter

Sug. Retail \$399 ea.

\$129 ea.

PACIFIC SURPLUS & DISTRIBUTORS LTD.

OPEN 7 DAYS

CALL 262-8131

Mon., Thurs. 9:30-8:00 p.m.
Fri. 9:30-8:00 p.m.
Tues., Wed. & Sat. 9:30-8:00 p.m.
Sun. 11:00-8:00 p.m.



CALL NOW 262-8131

NAME BRAND QUALITY WITH OUT A NAME BRAND PRICE

6 DAYS ONLY SALE ENDS MONDAY 12/20/82 9 p.m.



Computerized Astrology Service Unique Christmas Gifts Christmas Special:

2 for the price of 1
mail in coupon before Dec. 27

BIRTH CHART..... now \$9.20
SEXUAL COMPATIBILITY..... now \$9.20
NUMEROLOGY REPORT..... now \$4.25
1" reproduction
Up to 3000 words, 12/15 pages in detail

Send name, date, time & place of birth to:
PACIFIC OCEANIC ASTRO COMPUTING SERV.
Century Center, Suite 3-327, 1750 Kalia Ave.
Honolulu, HI 96826 • (808) 942-3786

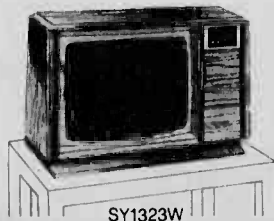
Introducing! New 1983 Zenith Color Television! Console and Table models!

Watch for the difference when you turn on a new Zenith Color TV. In the Custom Series - or in Zenith System 3 models where you will see the sharpest picture Zenith ever created.

That's due to our Tri-Focus picture tube and patented EFL™ gun for pinpoint focus plus the crisp detail provided by Zenith's PRP circuitry. That same PRP circuit that assures your Zenith System 3 TV receives all the picture detail a TV station transmits.

GREAT SOUND QUALITY, TOO

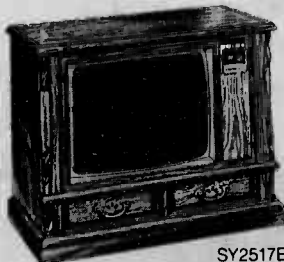
Listen to the dramatic sound of the new Zenith TVs and you'll hear the difference. On some compact models like the SY1961W, for example, speakers on both sides of the cabinet surround you with sound.



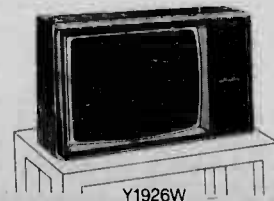
SY1323W



Y2508P



SY2517E



Y1926W



SY2541X

REMOTE CONTROL FROM THE WORLD LEADER

In addition to the normal remote control functions, you can

TURN YOUR TV INTO A TELEPHONE

And now for an incredible difference in remote controls only Zenith can offer: Computer Space Command with Advanced Space Phone in Model SY2541X. Lets you make and receive phone calls through your Zenith TV. Even lets you store two 13-digit telephone numbers for automatic dialing any time!

And, of course, all the other remote control functions are yours with the SY2541X.

STAY AT HOME TV

Finally, there's the reliability of Zenith's 100% modular chassis with snap-in modules. Selected models are at your PX now... or available thru your Special Order Desk!

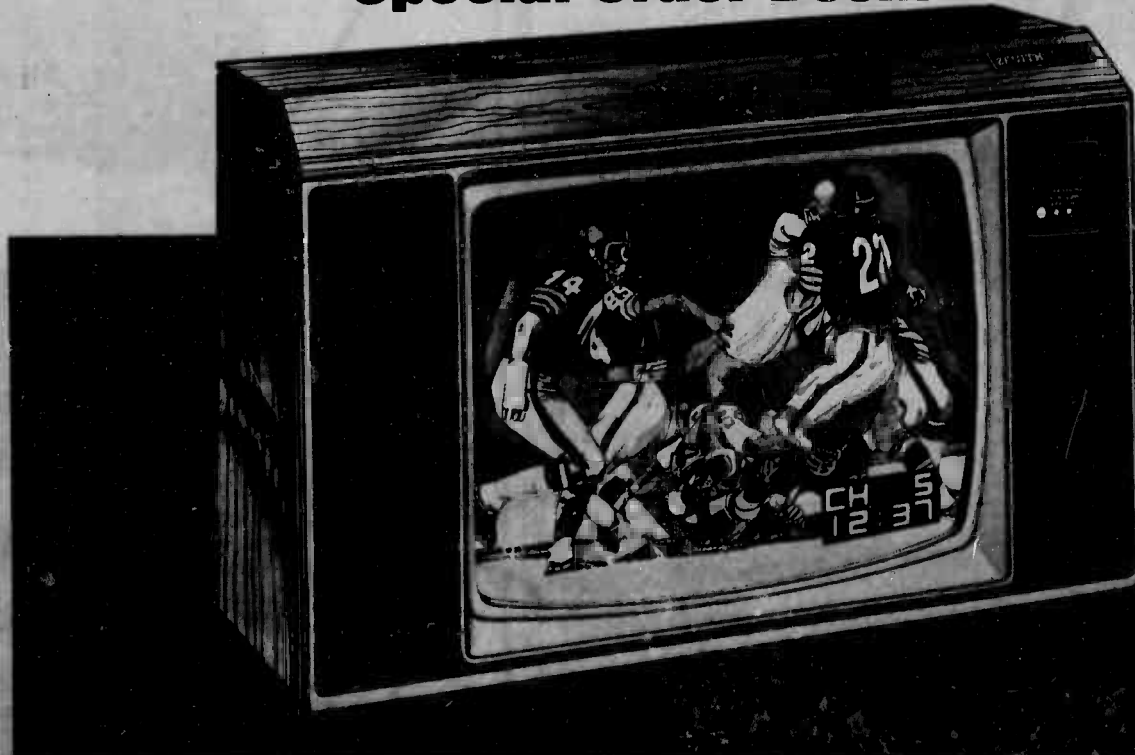
NEW 1983 ZENITH COLOR TV! Now at your PX or available thru your Special Order Desk!

112 CHANNEL TUNING CAPABILITY

There's a difference in channel tuning capability with these new Zenith TVs, too. Most are capable of receiving over 100 channels. That's every VHF and UHF channel in the country - plus cable.



THE QUALITY GOES IN BEFORE THE NAME GOES ON.



CONSOLIDATED THEATRES

KAM DRIVE-IN "SUPER" SWAP MEET EVERY WED., THUR., SAT. & SUN. • 7 AM to 3 PM • 488-5422	
WAIKIKI 1000 Ala Moana Blvd. • 923-2384 STARTS FRIDAY SORRY NO PASSES "TRAIL OF THE PINK PANTHER" (PG) Call Theatre For Show Times	KAM DRIVE-IN Moanalua Dr. Kam Hwy. • 488-5836 STARTS FRIDAY "BEST FRIENDS" (PG) "NIGHT SHIFT" (R) Gates Open at 5:30 PM Show Starts at 8:30 PM
WAIKIKI #2 1000 Ala Moana Blvd. • 923-2384 STARTS FRIDAY "THE TOY" (PG) "THE VERDICT" (R) Call Theatre For Show Times	PEARLRIDGE Pearlridge Center • 487-5581 STARTS FRIDAY "HONKY TONK MAN" (PG) Call Theatre For Show Times Tickets on sale throughout each day for that day's performance only. Tickets good only for performance purchased.
KUMIO 2995 Kumu • 941-4422 STARTS FRIDAY 5 DAYS ONLY "EMPIRE STRIKES BACK" (PG) Call Theatre For Show Times	STARTS FRIDAY "HONKY TONK MAN" (PG) Call Theatre For Show Times Tickets on sale throughout each day for that day's performance only. Tickets good only for performance purchased.
CINERIMA King Dr. Kakaia • 941-5591 STARTS FRIDAY SORRY NO PASSES "DARK CRYSTAL" (PG) Call Theatre For Show Times	STARTS FRIDAY SPECIAL ENGAGEMENT "SORRY NO PASSES" (PG) Call Theatre For Show Times Tickets on sale throughout each day for that day's performance only. Tickets good only for performance purchased.
VARSITY University Dr. Beretani • 940-4144 STARTS FRIDAY GOLDIE HAWN BURT REYNOLDS "BEST FRIENDS" (PG) Call Theatre For Show Times	AIKAHI Aiea Park Shopping Ctr • 254-1230 All Ages 9+ STARTS FRIDAY "ALONE IN THE DARK" (R) "CLAS OF 1994" (R) Call Theatre For Show Times
KAPICANI 1641 Kapalani • 955-5115 STARTS FRIDAY "TOOTIE" (PG) Call Theatre For Show Times	KAILUA DRIVE-IN 1175 Kailua • 537-1555 STARTS FRIDAY "TRAIL OF THE SORRY PINK PANTHER" (PG) "COVERMAN" (PG) Gates Open at 8:30 Show Starts at 8:30
ASIAN CINEMA 1000 Ala Moana Blvd. • 941-4422 STARTS FRIDAY "STITCHES REVENGE" Call Theatre For Show Times	LIBERTY 1175 Kailua • 537-1555 STARTS TOMORROW "RETURN OF THE CHINESE BOXER" "SHARK SHADOW" "LLAMA FIST" Call Theatre For Show Times
LAWAI 1110 Laie • 535-5230 All Ages 17+	ENDS FRIDAY "LEON HARRIS" @ 8:30 PM Only "MAHARAJA AT TALAHA" @ 8:30 PM Only STARTS "HAPOLAN AGA" "I LOVE YOU" Call Theatre For Show Times

RED HOT VALUE

Brought to you by

\$ K59 & KULA \$

Think of everyone who'd love a Christmas gift from Hickory Farms.

Choose from over 100 different gifts, in a variety of shapes, prices and sizes, all filled with tasty delights. And we'll gladly handle all the details sending your gifts out.

Hickory Farms OF OHIO

We'll give you a taste of old-time country goodness.



Pearlridge Phase II Ala Moana Center (inside JCPenney) Kahala Mall

FRAME SHACK

10% OFF FRAMING WITH THE PURCHASE OF ANY POSTER OR PRINTING

Aiea Workshop Stadium Mall 488-8584
Kaneohe Windward Mall 247-1911
Honolulu Workshop 317 Kamakee Street 521-2288
Honolulu Ward Warehouse 523-8866
Kailua Workshop 109 Hekili Street 261-3141

GALLERY • FRAMING SERVICES • DESIGN CONSULTATION

\$25.00 MAJESTIC FURNITURE \$25.00

Bring this coupon with you to get an additional \$25 off any purchase over \$100.

Moving Sale Up to 80% Off

Living Rooms Dining Rooms
 Teakwood Rattan
 Korean Chests Screens & Room Dividers

\$25.00

3075 N. Nimitz Hwy. 836-3171
 Offer thru December 24, 1982

\$25.00

A PERFECT

Holiday Gift!

KC KCHILITES PAIR PACKS



Reach beyond the range of headlights & drive safely at night with KC HILITES! Buy a KC PAIR PACK and receive a set of your favorite fog or driving lights plus light covers and switch kit — Everything you need for safe night driving!

PRICES START FROM **\$56.74**

KALANI 848-0561
 KANEHOE 235-5871
 WAIPAHU 671-5608
 MOILIILI 955-6391

ONE WEEK ONLY

Last Minute Christmas CARPET IDEAS

Come to BJ Pearlridge or Beretania and find out about the exciting Carpet Savings Ideas!

BJ FURNITURE

BJ DOWNTOWN 702 S. Beretania St. Honolulu 531-8581
BJ PEARLRIDGE 98-107 Kamehameha Hwy Aiea 487-9977
 Sale Ends Dec. 23, 1982

FREE ADMISSION

With the purchase of one at the regular price. Ask about our 365 great reasons to visit Paradise Park.

PARADISE PARK

Offer Good Thru 12/20/82

WOODWORKERS DO-IT-YOURSELFERS CRAFTSMEN

5-IN-1 MULTI-TOOL A Complete Home Workshop That's Compact And Affordable

FREE TOOL SET WITH PURCHASE TO FIRST SIX CUSTOMERS

Regular price \$1250
SAVE \$251 ONLY \$999

A. All Cast Iron Table
 B. Heavy Duty Design
 C. 2 HP Rated Mtr. Develops 3 HP
 D. Built As An Industrial Machine
 E. All Accessories & Tools Fit Other Similar Machines

Established Local Distributor
WOODMASTER OF HAWAII HOWARD K. GAFFNEY (808) 621-9092

CHRISTMAS SPECIAL
 GET \$5.00 OFF ON A \$25.00 GIFT CERTIFICATE WITH THIS COUPON

STRAWBERRY PATCHES

SANTA'S WORKSHOP OF THE PACIFIC

1050 Ala Moana Blvd. Ward Warehouse
 Coupon expires 12/24/82

CHRISTMAS SPECIAL
 GET \$5.00 OFF ON A \$25.00 GIFT CERTIFICATE WITH THIS COUPON

STRAWBERRY PATCHES

SANTA'S WORKSHOP OF THE PACIFIC

Come See Santa . . . and register to WIN a FREE TRIP TO MAUI (No Purchase Necessary)

NAME _____
 ADDRESS _____
 PHONE _____ ZIP _____

Mililani SHOPPING CENTER

Drop this coupon off at your favorite Merchant by DEC. 19, 1982, at . . .

SAVE \$50 ON ANY NEW MOPED

100 MPG
 Authorized Factory Service
 Financing Available
 Prices From \$379 w/coupon
 (one coupon per customer expires 1/15 83)

CITY BIKE MOPED SERVICE CENTER 449 COOKE STREET HONOLULU 537-3088

\$2.00 Off any feast combo

Name _____
 Phone _____

ARMADILLO PIZZA

SUN.-THURS. 11 A.M.-1 A.M.
 FRI., SAT. 11 A.M.-2 A.M.
 836-1400
 Halawa Hts.-Sand Island
 Pearl Harbor Hickam
 621-0700
 Wahiawa-Mililani
 Schofield Army
 955-2452
 Manoa-Waikiki-U.H.

\$2.00 Off any pizza plus 2 free Cokes

Name _____
 Phone _____

Offer valid between 10 p.m. - 1 a.m.

One Coupon Per Pizza. Not to be used in conjunction with any other coupon offer.

SHOW THIS AD SAVE \$10
 on any regular priced dress

villa roma

Offer good thru December 24, 1982

Localmotion

K-BAY OFFICERS' CLUB

TODAY — Lunch in the Pacific Room from 11 a.m. to 1 p.m. features special, hot carved sandwiches, soup and salads. Mongolian barbecue on the Lanai from 6 to 8:30 p.m.

THURSDAY — Lunch in the Pacific Room. Beefsteak buffet from 6 to 8:30 p.m. featuring steamship round, seafood item, rice or potatoes, vegetable and a salad bar.

FRIDAY — Lunch in the Pacific Room. Happy Hour in the Tapa Bar from 4:30 to 6:30 p.m. Mongolian barbecue on the Lower Lanai from 6 to 9 p.m. "Circle" plays in the Tapa Bar from 5 to 12:30 p.m.

SATURDAY — Hotel round of beef and Alaskan king crab buffet in the Pacific Room from 6 to 8:30 p.m.

SUNDAY — Champagne Brunch in the Pacific Room from 10 a.m. to 1 p.m. featuring a mini buffet, menu orders, and all the juice and champagne you desire. In the evening Prime rib and peel your own shrimp buffet from 6 to 8:30 p.m.

MONDAY — Lunch in the Pacific Room from 11 a.m. to 1 p.m. Join us Monday through Friday for lunch specials, hot carved sandwiches, soup and salads. Monday evening the club is closed.

TUESDAY — Lunch in the Pacific Room from 11 to 1 p.m. The Tapa Bar opens from 4 to 10 p.m. Happy Hour from 4:30 to 6:30 p.m. Tuesday evening the dining room is closed.

SNCO CLUB

TODAY — Lunch from 11 a.m. to 1 p.m. featuring beef kabobs and fried rice. Open menu dining available from 5:30 p.m.

THURSDAY — Lunch from 11 a.m. to 1 p.m. Mongolian barbecue from 5:30 to 8:30 p.m.

FRIDAY — Lunch from 11 a.m. to 1 p.m. featuring mahimahi or teri chicken. Happy Hour is from 4:30 to 6:30 p.m. Dinner super jumbo stuffed shrimp for \$9.95 or shrimp with prime for \$11.95 or just prime for \$8.95. \$1,000 Dance Contest starts at 9 p.m.

SATURDAY — Dinner special same as Fridays. Midpoint plays from 9 p.m. till 1 a.m.

SUNDAY — Champagne Brunch from 9:30 a.m. to 1 p.m. Family Christmas Party starts at noon. Family smorgasbord from 5 to 8 p.m.

MONDAY — Lunch from 11 a.m. to 1 p.m. Build your own Hoagie 20 cents per ounce from 5 to 7 p.m.

TUESDAY — Lunch from 11 a.m. to 1 p.m. Happy Hour is from 5 to 6 p.m. Bingo starts at 6:30 p.m. Shawn Von Bull plays from 8:30 to 11 p.m.

WINDWARD ENLISTED CLUB

TODAY — Lunch from 11 a.m. to 1 p.m. Dining room opens from 5 to 9 p.m. Every Wednesday night D.J. plays rock and roll in the Moongate Lounge from 7:30 to 11:30 p.m.

THURSDAY — Lunch from 11 a.m. to 1 p.m. Dining room opens from 5 to 9 p.m. with all the beef ribs you can eat. Every Thursday night is country and western night featuring this month "Lukes Pineapple Store" from 7:30 to 11:30 p.m.

FRIDAY — Lunch from 11 a.m. to 1 p.m. This month our dinner special is finger lobster and prime rib, just finger lobster or just prime rib. Freddy Fender tonight. Doors open at 7:30 p.m. Autographs after the show.

SATURDAY — Dining room opens from 5 to 9 p.m. with our finger lobster special, or prime rib and finger lobster, or just prime rib. Tonight is the "Dance Contest."

SUNDAY — Club opens at 11 a.m. Breezy Inn opens at 4:30 to 8:30 p.m. In the Breezy Inn this month we have a dinner plate special. Barbecued ribs, southern fried chicken, baked ham, and corn on the cob, Soul Night every Sunday night in the Moongate Lounge.

MONDAY — Lunch from 11 a.m. to 1 p.m. Dining room opens from 5 to 9 p.m. with all the spaghetti you can eat on "Italiano Night". Happy Hour from 5 to 6 p.m.

TUESDAY — Lunch from 11 a.m. to 1 p.m. Dining room opens from 5 to 9 p.m. with all the smorgasbord you can eat. In the Moongate Lounge D.J. plays rock and roll from 7:30 to 11:30 p.m.

Don't be left out on household goods shipments

WASHINGTON — There's an old adage in the military that says there's always a certain percentage who don't get the word. That adage applies to a nearly year-old change in entitlement for household goods shipment upon separation from active duty.

Under a change to the Joint Transfer Regulations that was effective Nov. 1, 1981, service members are now entitled to shipment of household goods for up to 180 days after release or

separation from active duty. Before the change, shipment could be made up to one year after separation or release from active duty. Many people haven't gotten the word.

The Uniform Pay and Benefits Act of 1981 required that people ship their goods or make application for shipment within six months after separation. After applying, if personal hardship prevents shipment within six months, they must reapply to a personal property shipping office

for an extension. Retiring members still have up to one year for shipment.

The major reason people are unaware of the change seems to be that orders issued before Nov. 1, 1981, were annotated with the one-year figure, even though the separation date was after the change went into effect. But shipment of household goods is authorized for only 180 days after release from active duty. Check with local household goods offices for details.

Cinema

MCAS Theater W T F S S M T
1 2 3 4 5 6 7

1. KING SOLOMON'S TREASURE — David McCallum, John Colicos, PG, action drama.
2. FOR YOUR EYES ONLY — Roger Moore, Carol Bouquet, PG, spy adventure.
3. TRON — Jeff Bridges, Bruce Boxleitner, PG, fantasy science fiction.
4. STRIKING BACK — Perry King, Don Stroud, PG, action drama.
5. BUSTIN' LOOSE — Richard Pryor, Cicely Tyson, R, comedy drama.
6. DINER — Steve Guttenberg, Daniel Stern, R, comedy.
7. SUMMER LOVERS — Peter Gallagher, Daryl Hannah, R, romantic drama.

Contact Camp Smith Special Services at 477-6167 or 477-6382 for listings of scheduled movies.

Stay Marine.

Metal Detection Hawaii

"The Gold Rush is Back!"

Metal Detectors — All Brands
Underwater • Land • Beach
Rentals • Magazines
Books • Accessories
Pipe Locators • Mining Eqpmt.

MasterCard & Visa Welcome

Open 7 days — 9 a.m. to 8 p.m.

955-4385

1718 Anapuni St., Suite 203, 96822



DON'T STAND IN LONG LINES!
CALL 946-8570

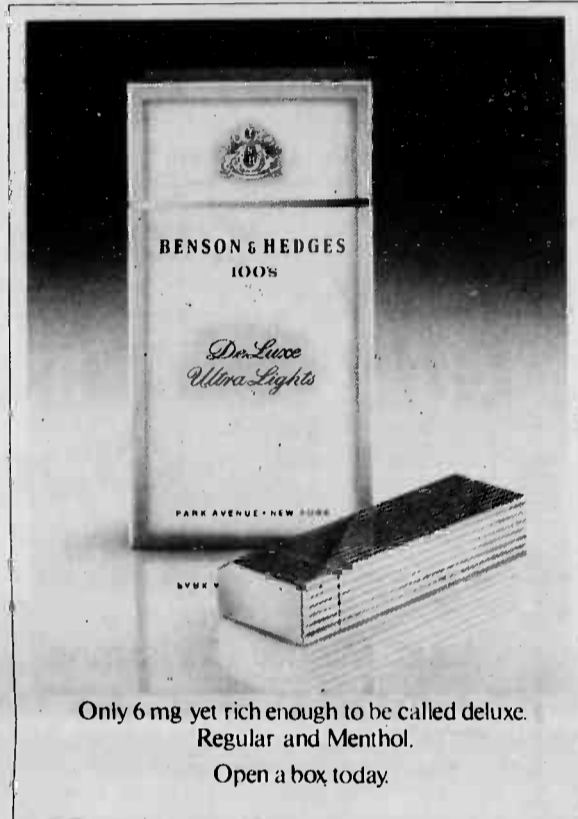
LICENSING HELP FOR OAHU
We help you put all the necessary papers in order, stand in line for you and complete everything to license your vehicle.

- ownership transfers
- renewals
- out-of-state mail in service
- military non-resident reasonable rates

1311 Kalakaua • Honolulu, HI 96826

BENSON & HEDGES

Deluxe
Ultra Lights



Only 6 mg yet rich enough to be called deluxe.
Regular and Menthol.
Open a box today.

Warning: The Surgeon General Has Determined That Cigarette Smoking Is Dangerous to Your Health.

6 mg "tar," 0.6 mg nicotine av. per cigarette, by FTC method.

You can count on the Corps.

GET OUT OF DEBT

through Chapter 13
A federal law which helps to pay off your debts without borrowing and in payments you can afford, stops creditor harassment and law suits, protects your job, co-signers and property. Information packet without obligation.

Please call:
HOWARD Y. TANAKA
Attorney versed in Chapter 13 filings
Suite 703, Ali Bishop Bldg.
1136 Union Mall, Honolulu

Phone: 526-1544

After Spruce

PepperTree
APARTMENT HOTEL

- 2 & 1 Bedrooms
- Children Welcome
- TV, Pool, Laundromat
- Maid's Service, Free Phone
- Close to most bases with transportation available

PEARL RIDGE SHOPPING CENTER
TLA APPROVED
488-1993

Courthouse
RACQUETBALL AND HEALTH CLUB

Military Membership Special
Ends Soon
Free
Racquetball • Exercise Classes
Babysitting
Call Today

PAA CLUB 633-6619
KANEHOE CLUB 235-5639
KAPIOLANI CLUB 942-8990

MICROWAVE OVEN TRUCKLOAD SALE

Due to the extended power failure on the Windward side, we are heavily overstocked and forced to liquidate 500 ovens at our lowest prices ever!

INDIVIDUAL FEATURES INCLUDE:

- ROTORAVES
- CAROUSELS
- DIGITALS
- PROBES

VALUES TO \$498

239

SELECT FROM EITHER:

- PANASONIC
- TAPPAN
- AMANA
- LITTON

COOK & DEFROST 7 cubic ft. Demo's

189
Sug. Retail \$348 5-year warranty

MICROWAVE W/BROWNER COMBINATION DIGITAL W/AUTOMATIC PROBE

469
Sug. Retail \$698 5-year warranty

FREE COOKBOOK WITH PURCHASE

OUR GUARANTEE:

Simple, we guarantee you the lowest prices in Hawaii on any oven including military exchanges. This applies to the Microwave/Convection Ovens from SHARP & PANASONIC. In addition, we have 22 models on display.

PACIFIC SURPLUS & DISTRIBUTORS LTD.

262-8131

OPEN 7 DAYS & 3 NIGHTS!

Mon., Thurs. 9:30-9:00 p.m.
Fri. 9:30-8:00 p.m.
Tues., Wed. &
Sat. 9:30-8:00 p.m.
Sun. 11:00-8:00 p.m.



CALL TODAY!
262-8131
6 DAYS ONLY
SALE ENDS
MONDAY
12/20/9 p.m.

LAYAWAY
NOW FOR
CHRISTMAS



Simple decorations add flavor to Christmas

by Carol Stepel

Be yourself as you capture the Christmas spirit in Aloha Land. There are many cheerful, quick-to-make, simple decorations to add a uniquely you flavor of Christmas spirit to your surroundings. Take a good look around your home — then decide on a few things you and the family can create together. I have made a list of ideas which I've seen and/or used which may inspire you!

It was my plan to include a recipe and directions for a Ginger-Bread House which my children and I have made over the years. Then I noticed that the last issue of WOMAN'S DAY has similar directions with a recipe in it.

To make curls for Santa faces or angel hair etc. try this idea. Wrap yarn tightly and firmly around metal knitting needles. Lay end of yarn against needle, wrap over end and down needle. Push and

twist strands tightly against one another until entire needle is covered. To end around needle. Dip yarn covered needle into water and bake in 150° oven for 1 1/2 hours. Cool, remove yarn from needle. Curls will be permanent, cut into desired lengths. Glue in place as needed.

Tape record Christmas happenings for relatives away or just save the tapes for later as presents to children or as your own keepsakes.

Decorate your potted plants for Christmas. Dress the pots in tissue paper, wrapping paper, or a Christmas fabric bag.

Top every picture and mirror with a swing of greenery and a big red, green or plaid bow. Add a special touch to your holiday table. Make small miniature stockings to put individual place settings of silverware. These can be made of felt, construction paper, knitted or crocheted.

Salutes

EDITOR'S NOTE: Salutes is designed to recognize individuals for their achievements and exceptional performance of duty as well as to welcome new arrivals to Hawaii.

The information is compiled from Fleet Home Town News releases submitted to the Joint Public Affairs Office by unit information officers.

H&HS

Welcome aboard:
PFC N.D. Jacobson Jr.

Promotion:
Cpl S.E. Butler
LCpl R.C. Chapman
Reenlistment:
MSgt T.W. Bishop
Sgt D.W. Johnson

HqCo, 3dMar

Welcome aboard:
PFC L.D. Brown
PFC J.E. Ravenell
Promotion:
Cpl S.R. Fahrenholz
LCpl S.A. Carson
LCpl A.J. Munoz

Letter of Appreciation:
Sgt E.A. Looney

1/3

Welcome aboard:
Sgt T.A. Smith
Sgt G. Stipauovich
Sgt A.M. Strveby
Cpl H.R. Bustos
Cpl M.W. Joe
Cpl L.L. Ray
Cpl B.C. Simpson
Cpl A.M. Tyson
LCpl D.A. Avila
LCpl S.E. Cleveland
LCpl J.A. Herrera
LCpl R.T. James
LCpl A.R. Krisfokof Jr.
LCpl D.S. May
LCpl D.A. Smith
LCpl H.K. Watson
LCpl A.M. Zimmerman

PFC R.L. Davis
PFC J. Garcia
PFC V.B. Goodrich
PFC W.S. Hlae
PFC E.A. Montalvo
PFC E.M. Robert
PFC M. Salinas
PFC G.F. Shechan
PFC W.J. Whatley Jr.
Pvt K.E. Brown
Pvt G.E. Caldwell
Pvt R.J. Carman
Pvt P.A. Cestodio
Pvt J.S. Chatham
Pvt D.P. Christianson
Pvt D.A. Dean
Pvt M.W. Garza
Pvt R.E. Griggs
Pvt M.L. Harrell
Pvt A. Hernandez
Pvt K.W. Hugel
Pvt F.V. Kapuy
Pvt J.B. Kehrt
Pvt S. Keys
Pvt J.A. Lang Jr.
Pvt G.M. Lewis
Pvt M.E. Ortiz
Pvt D.J. Parns
Pvt H. Ramos
Pvt C.J. Stoll
Pvt M.J. Thomas
Pvt J.R. Walker
Pvt R.J. Westlake

3/3

Welcome aboard:
GySgt M.A. Martin
SSgt A.R. Square
Cpl J.A. Andrews
Cpl G. Banker Jr.
Cpl D.L. Cash
LCpl J.D. Carte
LCpl L.T. Johnson
LCpl T.R. Kuzma
Pvt T.I. Chandler Jr.
Pvt K.A. Dax
Promotion:
1stLt D.L. Lawrence
Sgt T. Sula
Sgt C.J. Wilson
Cpl J.M. Ennals
Cpl S.A. Halvorsen
Cpl J.R. Pajarillo
Reenlistment:
Sgt D. Baily
Cpl R.K. Vann
Cpl M.E. Williams
Cpl R.K. Wilson

1/12

Welcome aboard:
WO D.M. Moser
Sgt D.A. Lucero
Cpl D. Tackett
LCpl T.R. Austin
LCpl G.E. Galloway
LCpl W.M. O'Brien
LCpl T.A. Ruckman

LCpl R.L. Wheeler
PFC S.W. Connelly
PFC G.D. Dyer
PFC M.E. Geronimo
Pvt J.M. Bailey
Pvt C.L. Kluczynski
Reenlistment:
Sgt J.J. Crawford

3dAABN

Promotion:
Sgt M.R. Brooks
Cpl G.S. Sherron
PFC D.E. Lawson
PFC T.W. Rightler
Good Conduct Medal:
Sgt M.P. Heninger

HMM-262

Promotion:
Capt H.M. Henry

Capt C.A. Hoffman
SSgt M.T. Robbins
Sgt D.C. Brown
Sgt A. Sanchez
Cpl J.E. Cain
Cpl K.K. Kita
Cpl D.R. Lipps
Cpl D.H. Moen
LCpl J.B. Clevenger
LCpl W.R. Henry
LCpl T.K. Nelson
LCpl S.T. Patton
LCpl M.S. Stoekert
LCpl R.L. Welsh

Meritorious Promotion:
Sgt F.E. McDonald
Cpl P.D. Gagliardi
Cpl D.G. Lampitoc
Cpl R.W. Leighton
Cpl A.J. Morita

Meritorious Mast:
Sgt C.J. Puffenbarger

HM2 T.F. Brown
HM3 T.F. Gavin
Cpl D.C. Russell
LCpl J.H. Beesley
LCpl M. Garringer
LCpl R. Gold
LCpl S.H. Martin
LCpl A.W. Weissman
PFC M. Fischer

Letter of Appreciation:
LCpl J.M. Alexander
LCpl J.E. Grier
LCpl C. Ramirez
PFC R.J. Drummer
PFC D.W. Shaw

Good Conduct Medal:
SgtMaj R.L. Boyd
GySgt R.G. Hamilton
SSgt M.T. Robbins
Sgt J.P. Kellogg
Sgt C.J. Puffenbarger

CREATIVE THEATER CLASSES
3 1/2 - 14 yrs.
Communication and Theater Skills.
Reasonable Costs, Small Classes

COMEDY SKILLS - 7 1/2-14 yrs.
MIME and PANTOMIME - 6-12 yrs.
CREATIVE EXPRESSION - 3 1/2-7 1/2 yrs.
VIDEO PRODUCTION
PERFORMANCE SKILLS - 7 1/2-13 yrs.

Enrolling Now for Jan. Hawaii Kai, Waipahu, Mililani, Pearl Harbor, Kailua, Waihee
941-2798, 261-0808, 737-5544

What's Fun & Free Every Weekend?
"THE ART MART" at the Honolulu Zoo Fence
YOUR ART MART... FEATURING 100 ARTISTS INCLUDING THE GREAT AND NEAR-GREAT BARGAIN PRICES ALL ORIGINALS.

BROWSE · BUY · INVEST ·
SAT. & SUN. 10 AM-4:00 PM

FREE 1983 Chuck E. Cheese CALENDAR
Contains over \$100 worth of coupons good for fun and food all year long!

This coupon is good for one (1) FREE Chuck E. Cheese 1983 Calendar with the purchase of a large pizza. Coupon valid through December 31, 1982 or WHILE SUPPLY LASTS.
Coupon must be redeemed at time of food purchase and may not be used in conjunction with any other offer or coupon. Only one (1) coupon per person.

COUPON
DOUBLE TOKEN DAYS
MON. thru THURS.
With purchase of Food Item (Except Holidays)
PEARL CITY
98-1258 Kahanamanu St. Times Square-Waimalu
(Next to Times Supermarket) Phone 488-8487
Minors must be Accompanied by Adult.

HOURS:
11 A.M.-11 P.M.—MON.-THURS.
11 A.M.-12 MIDNITE—FRI.
10 A.M.-12 MIDNITE—SAT.
10 A.M.-11 P.M.—SUN.
OPEN AT 10 A.M. on Holidays

CALL OUR "PARTY LINE"
487-2562
for info. & res. for Special Birthday Parties

Chuck & Cheese's
Pizza Time Theatre



Solve your personal problems for \$2,195.00

With an Apple® Christmas Package — an all-in-one personal computer system, complete with software.

Right now, we're offering special savings on all kinds of packages. For the home, for the professional, for the manager, for the small business.

And one of them's for you.

Call us for an appointment or drop in for a free demonstration.

Special Discounts on Apple products given to holders of Military I.D.'s
Computerland®

Honolulu 567 S. King St. 521-8002
Stadium Mall 4510 Salt Lake Blvd. 487-0030
Kaneohe 46-208 Kahuhipa St. 247-8541

MLC has the PRESENT for the FUTURE



Memory Lane Computers is offering very special prices on Apple Christmas Packages. Complete Apple Personal Computer systems with everything you need to get started, including software. It's the present for the future.

MLC's Special Christmas Package includes:

- Apple II 48K
- Stand
- Language Card (opens door to other computer languages) increasing an additional 16K
- Apple Writer
- Monitor III
- Disc Drive
- Extended Warranty — 15 Months Total
- MLC has packages for small business, big business, education or home use.

See Santa's qualified helpers at Memory Lane Computers for your special package. Memory Lane Computers also has gift certificates available for Super Stocking Stuffers.

Apple
Authorized Apple Dealer and Service Center

MLC MEMORY LANE COMPUTERS
NAVY Exchange PEARL JOHNSON CIRCLE
COMPUTER CORE
Classes are starting NOW!
Inquire at Memory Lane Computer, call 526-3232.

7-ELEVEN FREEDOM SUPER PRICES

OPEN 24 HOURS EVERYDAY

COLD SOFT DRINKS
•Coke •Sprite
•Tab •Sugar Free Sprite
24/12-oz. Cans
Reg. 8**
SAVE \$2.40

6 59
CASE
With this coupon Limit one case per coupon Offer good thru 12/21/82

Every Day Low Prices

ICE COLD BEER
BUDWEISER OR MILLER LITE
24/12-oz Cans
\$11.99 Case

GRADE A EGGS
FRESH ISLAND X-LARGE
\$1.45 Dozen

MEADOW GOLD
REFRESHING 1/2 GAL. MILK
\$1.67

BIG GULP®
A BIG 32 FL. OZ.
69¢

CIGARETTES
ALL BRANDS & SIZES
\$7.99

MEADOW GOLD
EGG NOG
1.19
Reg. \$1.49

LAYS & RUFFLES
Twin Pack or 1/2 lb.
1.19
Reg. \$1.89

2-LITER COKE
1.49
Reg. \$2.19

All items plus tax while supply lasts. Specials good through Tues. 12/21/82.

The One Place Where Freedom and Super Prices Meet

Courts-Martial Report

EDITOR'S NOTE: The information contained in Courts-Martial Report is compiled by the Joint Legal Service Office and is published as a source of information for all Marines.

Private First Class James C. Diggs, 1st Battalion, 12th Marines, 1st Marine Brigade, was convicted at trial by special court-martial of disobeying a command of a superior commissioned officer, and of aggravated assault on another marine.

He was sentenced to six months confinement at hard labor, forfeiture of \$280 pay per month for six months and reduction to private.

Lance Corporal Carl D. Forrier, 1/12, was convicted at trial by special court-martial of

the wrongful sale, transfer and possession of 10 units of LSD.

He was sentenced to five months confinement at hard labor, forfeiture of \$380 pay per month for three months, reduction to private and a bad-conduct discharge from the U.S. Marine Corps.

LCpl Leonard L. Eagle, Headquarters and Maintenance Squadron-24, Marine Aircraft Group-24, 1st Marine Brigade, convicted at trial by special court-martial of wrongfully possessing beer in the BEQ; and of wrongfully possessing marijuana.

He was sentenced to three months confinement at hard labor, forfeiture of \$350 pay per month for three months and reduction to private.

PFC Ronald E. Taylor, 3d

Battalion, 3d Marines, 1st Marine Brigade, was convicted at trial by special court-martial of stealing camera equipment of a value in excess of \$100; of unlawfully entering the ballast control room aboard the USS Cleveland; and of communicating a threat to injure.

He was sentenced to six months confinement at hard labor, forfeiture of \$380 pay per month for six months, reduction to private and a bad-conduct discharge from the U.S. Marine Corps.

LCpl Charles W. Brunson, 3/3, was convicted at trial by special court-martial of larceny of camera equipment of a value in excess of \$100; and of unlawfully entering a ballast control room aboard the USS Cleveland.

He was sentenced to six months

confinement at hard labor, forfeiture of \$367 pay per month for six months, reduction to private and a bad-conduct discharge from the U.S. Marine Corps.

PFC Christopher A. Rickert, 1st Battalion, 3d Marines, 1st Marine Brigade, was convicted at trial by special court-martial of unauthorized absence from Jan. 7 to Feb. 8, 1982; and the wrongful sale, possession and transfer of 2.5

grams of marijuana. He was sentenced to five months confinement at hard labor, forfeiture of \$380 pay per month for two months and reduction to private.

PFC Timothy P. Davis, 3/3, was convicted at trial by special court-martial of unauthorized absences from Aug. 13 to Aug. 16, 1982, and from Aug. 18 to Sept. 27, 1982; and of missing movement through neglect on Aug. 13, 1982

and again on Aug. 18, 1982. He was sentenced to four months confinement at hard labor, forfeiture of \$200 pay per month for four months and reduction to private.

Staff Sergeant Dale P. Fennell, 1/12, was convicted at trial by special court-martial of the wrongful use of marijuana.

He was sentenced to six months confinement at hard labor and reduction to private.

Amtracs

Battalion Landing Team 3/8 digs in, fights mud

by Sgt Christopher Grey

BEIRUT, Lebanon (Delayed)—In 1958, amphibian tractors loaded with U.S. Marines were launched to spearhead a Marine landing 700 yards from the Beirut International Airport. History was repeated 24 years later on Oct. 30 when contemporary armor rumbled ashore again in this devastated city.

As if to confirm the cyclical nature of history, a unit from the same regiment that made the 1958 incursion on Lebanese soil, spilled out of the armored amphibians in 1982. Battalion Landing Team 3/8 is now dug in around this city's air terminal and the vehicles of Company B, 2nd Assault Amphibian Battalion have become vital links in the security perimeter around that sector of West Beirut.

Most of the Marines who came ashore as the second U.S. Marine unit to serve as the American contingent of the multi-national force, reached Lebanese soil courtesy of the amphibian crews. "We were the first men ashore, and my men are damn proud of that," emphasized 1st Lieutenant Tom Ullrich, the 24-year-old amtrac platoon commander.

Now that the initial landing is complete, the 24th MAU trackers have been assigned new duties that kept them high and dry before the Mideast rains came along the southern portion of the U.S. perimeter, the tractors are dug deep into fortified defensive positions. Perched at the ready with .50 caliber machineguns, pointing at the high hills ringing Beirut, they have been strategically positioned to provide supporting fire should Marine

infantry require it.

Life for the amtrac Marines is much the same as it is for other leathernecks on duty in this ravaged city. They are constantly fortifying positions and struggling to keep equipment clean in the face of mud and rain. But these are minor differences. The cargo compartments of the static vehicles make a cozy shelter from the ever present cloud-bursts. "Although our positions were here when we arrived, we are constantly digging out our holes trying to battle our worse enemy right now: the mud and water," Ullrich said.

The amtrackers seem to be weathering the Mideast storms in good spirits. "The weather is unique here," explained Ullrich. "We have a mixture of Camp Lejeune's bugs and 29 Palms' sand."



After an emplacement was built for their Amtrac, the crew washed clothes and dried them in the hot Lebanese sun. (Official USMC photo by Sgt Chris Grey)

BLOOD. LET'S GET IT TOGETHER.
Red Cross is counting on you -to help.
+

Take off for 30 days.

Marines are entitled to 30 days of paid vacation each year. You only get 2 weeks in many civilian jobs.

You can count on the Corps.
Stay Marine.



PACIFIC MARINA INN
presents
NIGHT LIFE
in
The Canoe Hut Lounge
WED.-SAT. 9:30 PM-1:30 AM
Variety Music and Dancing

Why pay more?!!
\$44 per day
CONTACT Rent-a-car priced right for you.
MILITARY ROOM & WHEELS
Special Military Rate (Room Only) \$27 OBL. OCC.

2628 Waialae Loop Honolulu, Hawaii 96819
PACIFIC Marina INN
AT THE AIRPORT
836-1131

MILITARY ONLY!

BURI RATTAN HUT "HOLIDAY DIVIDEND"
\$40⁰⁰ OFF EVERY INVOICE
of \$250 or more with this coupon.
Customers Name _____
Rank _____ Phone _____
Coupon dividends available at both locations

CHRISTMAS SPECIAL Magazine Racks
Reg. \$30.19
NOW \$24⁰⁰
WHILE SUPPLY LASTS

SEE OUR SHOWROOM



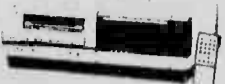
WHY PAY RETAIL WHEN YOU CAN SHOP BASE?
BURI RATTAN HUT
SCHOFIELD BARRACKS also at HICKAM AFB
BLDG. 874 BLDG. 1709
624-4116 422-1175

Schofield location may be temporarily closed due to power outage, please check with our Hickam location.
Call for our New Year's hours!
Sale Good Thru Dec. 24, 1982
Exchange Concessionaire. This ad paid for by Burl Rattan Hut.
MILITARY ONLY - ID REQUIRED



THE VIDEO EXPERTS! THE BEST VIDEO LIBRARY!
FINEST SERVICE! BEST DEALS!

TOSHIBA
V-9500



Enjoy all the features of this remote control video cassette recorder from Toshiba

A video buy you've got to see to believe!

WAS ~~\$849.00~~
Now price slashed...
too low to advertise!
Please no phone quotes.

LOOK AT THIS VIDEO BUY

- QUAD TRACK 4 Head Hi-Fi Format VCR • Dual Speed up to 5 Hours Recording Time • Front Loading System • Frequency Synthesizer Tuning System
- 117 Ch Capability (Auto Ready) • Programmable Programs, Over a 2 week period • Super Still (Still and Still) • Super Slow and Variable Slow Motion (Still and Still) • Frame by Frame Advance • 2 Time Scanning • Two Speed Picture Search • Soft Touch Operation
- Soft Eject Cassette Mechanism • Memory Counter • Auto Rewind • 10 Minute Battery Back-up • Wireless Full Function Remote Control

HAWAII'S LEADING VIDEO STORES
OUR SERVICE IS SECOND TO NONE!

- Lowest prices
- Video Experts
- Reliability



Main Store Kailua Waipahu

Christmas Special

- 5 1/2 Gal. Aquarium Set up ... Reg. \$31.99 **\$21.99**
- Tropical Fish All **30% off**
- All Bird Cages Entire Stock **20% off**
- Dynaflo 150 eco. ... Reg. \$19.99 **\$14.99**
- 10/20 ... Reg. \$19.99 **\$12.99**
- Challenger I air pump Reg. \$6.99 **\$3.99**
- 2 lbs. Parrot Mix Reg. \$2.99 **\$1.99**
- 5 lbs. Parakeet Mix **\$1.99**
- Dog Sweaters Paris ... Reg. \$6.49 **\$5.89**
- New York ... Reg. \$6.49 **\$5.89**
- Chicago ... Reg. \$4.49 **\$3.99**

FREE COMET GOLDFISH

Substitutes Neon Tetra or Zebra Danio
Limit 1 fish per person

Good Dec. 15-24

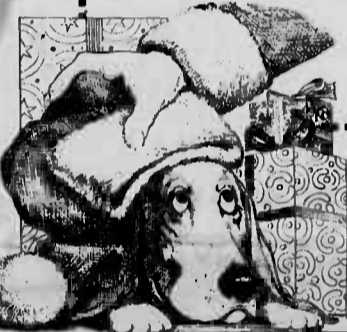
WITH THIS COUPON

Christmas Stockings Available

MOANALUA PETS Located at Gibsons
(2850 Pukolaa St.)
839-6886



Jara Finch Reg. \$8.99 **\$5.99**



CRIME STOPPERS

If you know of, or see a crime, call 955-8300 immediately. Crime Stoppers is a new system that keeps you anonymous and if your tip leads to an indictment or conviction you could earn up to \$1,000.

Deck the Halls and Trim the Doorways... Yarn & Needlecrafts

is offering an array of finished HANDMADE gift items

- stockings
- ornaments
- stuffed toys
- needlepoint
- stitchery
- framed pictures

151 Hekili St. (across from Holiday Mart) 262-9555
Mon. thru Fri. 9:30-5:30
Wednesday 9:30-8:00
Saturday 9:30-5:00
Sunday 10:00-3:00

BLACK HAIR TAKES A SPECIAL KIND OF CARE.



NANCY HIGA IS JUST THAT PERSON.

It takes a specialist to assure your hair the proper treatment. Nancy has had extensive training on the mainland and Europe in relaxing, curly curls, press and curl and braiding. We invite you to come in and consult with her on any of your hair needs or problems.

Susan Beers' Salon
116-C Hekili St., Kailua Phone 261-8571

RUNNERS WINDWARD

JUST ARRIVED



- Pegasus **\$44⁹⁵**
- New Equator **\$59⁹⁵**
- New Internationalist ... **\$52⁹⁵**

Where experience makes the difference.

354 ULUNI ST., KAILUA • 262-9292
One block Makai of Toyota • Parking
M-F 11:30-5:30, SAT. 10:00-5:00

ZENITH NEW 1983 COLOR TVs WITH SPACE COMMAND REMOTE CONTROL **SYSTEM 3**

NOW AVAILABLE AT YOUR PX... OR THRU YOUR SPECIAL ORDER DESK

19" ZENITH SYSTEM 3 REMOTE CONTROL COLOR TV

Dual Speaker Sound with Tone Control. Quartz-Controlled Electronic Tuning. 112 Channel Capability including 42 cable channels. Reliable Triple Plus Chassis. Tri-Focus Picture Tube for outstanding picture sharpness. Color Sentry for automatic color control. PRP Circuit for 25% more picture detail than most color TVs. New contemporary cabinet has beautiful simulated Walnut finish.

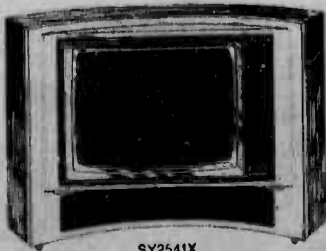


DUAL SPEAKERS SURROUND THE PICTURE WITH SOUND

Computer Space Command 3000 Remote Control lets you program TV to go on and off

like a clock radio. Displays time and channel on the screen like a computer. Provides favorite channel scanning, direct channel access.

Exclusive Advanced Space Phone Makes This TV A Telephone. Now with Auto Dial!



25" ZENITH SYSTEM 3 REMOTE CONTROL COLOR TV

Beautiful ultramodern console with Quartz-Controlled Electronic Tuning. 112 Channel Capability. Hi-Performance 4-speaker sound system. Computer Space Command 4100 Remote Control with Advanced Space Phone. In simulated Rosewood finish.

Zenith's Exclusive Advanced Space Phone

Auto Dial lets you make and receive phone calls through your Zenith TV. Even lets you store two 13-digit phone

numbers for automatic dialing any time. All this in addition to the normal remote control functions.

Kramer's

IT'S A MAN'S WORLD SINCE 1888

LEFT BANK®

Christmas '82 like no other

Striped Options

Top. short sleeve, collar placket pullover knit shirt. Men's S-XL. 19.00
Middle crewneck, long sleeve knit striped up rich. Men's S-XL. 24.00

Bottom. striped raglan sleeve crewneck short sleeve knlt. Men's S-XL. 17.00

Ladies' Night Thursday, December 16 6-8 PM

- Strolling Male Fashion Show
- Shop For Christmas
- 10% DISCOUNT ON ALL LADIES' PURCHASES

660 Kailua Road





Avoid hassles, hang up . . .

by Sgt Marie Woods

Hello — this is an obscene phone call. Occasionally, the voice of a caller will belong to an individual who gets his kicks by saying things he's too timid to say face to face.

An average of two of these calls are reported each month to the Provost Marshal's Office here, according to PMO statistics.

The difference between an obscene call and a nuisance call is content. According to Master Sergeant Louis Ventura, chief investigator of the Criminal Investigation Division, PMO, an obscene call involves vulgar language. "A nuisance call, however, is any other kind of call,

like someone breathing into the phone," explained Ventura. "If a person receiving an obscene call pursues the conversation, the caller will most likely persist," he said. "It's better to hang-up than to give the caller something to keep talking about."

If there is a conversation, remembering what was said will greatly help CID. "A caller's accent or background noises can tell us a lot about him," said Ventura.

Immediate reporting of an incident aids PMO and CID in tracking down the caller. Don't be afraid to report a call. Just notify the military police desk sergeant by calling 257-2123 to report an obscene or nuisance call.

IGE

INTERNATIONAL GOURMET ENCOUNTER

NOTICE: We apologize for publishing the incorrect phone number in the Dec. 8th advertisement. Please note our correct number is: 926-3431. Your patience is appreciated.

Singles meet . . . in an elegant atmosphere for an enjoyable dining experience, at a very reasonable price. Entertainment, gourmet advice, wine participation and more. Available weekly. Be introduced to new single friends with common interests by your director, Jack M. Richard and his staff.

Jack M. Richard is an internationally known gourmet, an award winning French chef, wine tasting connoisseur and fine dining maitre d' with great experience in directing singles encounter groups.

Participation includes:

- Discounts at fine restaurants
- Monthly Publication provides news, schedules of events, gourmet suggestions and advice
- and much more

Christmas Special:
\$10.00 Participation Price for 6 months
\$15.00 Participation Price for 1 year

Make your reservations for the next event before Dec. 18th. Call Jack Richard for information

926-3431

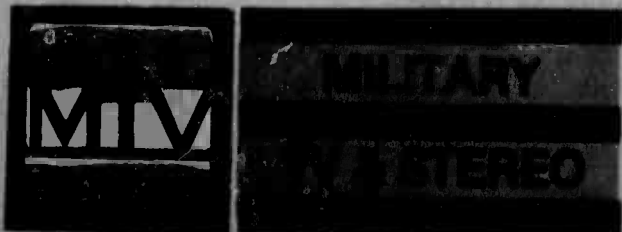
LET MTV MAKE YOU A JOLLY, HAPPY SOUL!



Turn to Military TV & Stereo now to find the perfect gift for everyone on your list. We offer Instant Credit to all Military, with no credit check, regardless of rank. So stop by MTV where you'll find not only great stereo systems but color TV's and furniture as well!!!

Men Christmas

INSTANT CREDIT FOR E-1 AND UP!



Serving The Nation's Armed Forces From Coast To Coast

Got Credit Problems??? Call Us...
Our Name Says It All

622-3995

177 S. Kam Hwy., Wahiawa
M-F 10-8, Sat. 10-6, Sun. 10-3

Marathon record broken by unknown

by Cpl Charlie Marshall

HONOLULU, Hawaii — Dave Gordon passed the Olympic gold medalist, Frank Shorter, at the 10-mile mark and pulled away from Sweden's Erik Stahl five miles later to win his first marathon in a record time of 2 hours, 15 minutes and 30 seconds.

Gordon, a 23-year-old University of Montana graduate, shaved 43 seconds off of the previous Honolulu Marathon record set by Dean Matthews in 1979.

In the 10th Annual running, Eileen Claugus of Sacramento, Calif. took the top female honors crossing the line at 2:41:11. Claugus, 27, led the entire race in the female division and claimed the victory unchallenged as the four-time women's champion. Patti Catalano could not enter due to an injury.

Duncan McDonald, a three-time Honolulu Marathon winner, overtook Stahl at about 18 miles to finish second overall in 2:17:43, a mere 13 seconds ahead of Stahl.

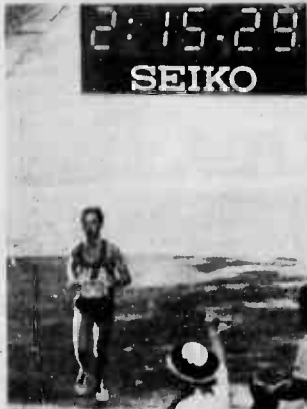
Shorter was unable to keep up with his own pace of five minute miles and finished fifth with 2:22:16.

Last year's winner, Jon Anderson, was eighth, clocking 2:23:11.

The first Marine to cross the finish line was Corporal Bruce Hall, winner of the 1982 Windward Marathon. Although he was 30th overall, Hall, of Brigade Service Support Group, ran his race in 2:32:53. He was 13th in his age group, 20-29 years old.

The record running of the race was hampered by almost an hour of rain but Shorter's pace of 5-minute miles made the rain seem like a blessing as it cooled off the 10,258 athletes. Shorter, who won the gold medal 10 years ago, fell off his pace and let the unknown Gordon go on to win.

Gordon had not run a marathon in three years.



THE WINNER — Dave Gordon approaches the finish line in record time completing the Honolulu Marathon in 2:15:30. (Photo by Sgt Pepper Davis)

Valuable Coupon — Clip & Save

CARPETS STEAM CLEANED

We Recommend Scotchguard Carpet Protector!

Commercial Rates Available!

WHY DO MORE CUSTOMERS SELECT HAWAII CARPET CLINIC
 * Certified Firm & Operators
 * Providing Professional Service Since 1976
 * We Pre Vacuum
 * Move Furniture
 * Expert Spotting
 * Brushed or Raked
 * Hand Edging

ANY SIZE ROOM
 Normally \$34.95

\$9.95 PER ROOM
 NOW ONLY 3 ROOMS OR MORE!
 EXPIRES Jan. 15, 1983

Our Work Includes:

- ✓ Workmanship Guaranteed
- ✓ One Day Service Avail.
- ✓ Color Brighteners
- ✓ Quick Drying
- ✓ Pet Deodorizers
- ✓ Controls Fleas
- ✓ Licensed and Insured
- ✓ Ask for References

HAWAII CARPET CLINIC
922-2222

SERVICES AVAILABLE
 Pre Conditioning
 Flood, Mud, and Water Damage Control

How I survived 26 miles 385 yds.

by Cpl Charlie Marshall

... And the agony of da feet, da knees, da legs and da whole body that aches after running 26.2 miles.

More than 10,000 people were at the starting line ready to tackle the 10th Annual Honolulu Marathon Sunday and I was among the 49 percent that was ready to run their first marathon.

Honestly, I don't see what people get out of running marathons.

The body (using stored carbohydrates) can only run 18 miles tops as proven by the hundreds of athletes who stopped to walk at mile 15, 16, 17, 18, etc. (I stopped at 17 for a cigarette break.)

My knees finally gave out somewhere around the 20-mile marker. The thoughts flash through your mind: I'm not going to finish. This race is ridiculous. The pain. What mile are we on? Where's the next aid station? I snapped out of it when a runner passed me who was in worse condition. Thinking about him made the pain go away.

Around mile 22 I had a limp that was getting sympathy from the crowds that gathered to watch us "heroes" run our bodies into the ground.

It might appear that I sound a little negative about marathons, but that's only because my pride was hurting more than my knees.

My estimated finishing time was 3:45 and at mile 20 I was just over three hours. From that point, if I had walked at a military cadence I could have finished 4:20. If I had limped at a military cadence I could have finished 4:40. If I had crawled at a military cadence I could have finished at five hours.

I finished 5:05. Another disadvantage about 10,000 people crowding the starting line is "people packing." Do you know what 10,000 people smell like?

The only smell that was worse than that was rounding the corner at Kapiolani Park and getting a full whiff of the Honolulu Zoo.

As I headed for the finish line the juggler passed me. The Coast Guard man who ran it backwards passed me. Even a "walk-a-thoner" passed me.

Then there are the people who have the cutesy sayings written on their shirts. "I survived Hurricane Iwa, but ... (on back) can I survive the Honolulu Marathon." I had to disagree with the couple that sported "Pride lasts longer than pain," on their shirts. They obviously weren't in my running shoes.

One of the many friends I made out there had this comment, "This is a lot of fun, isn't it?"

I thought to myself, "Yea, this is a lot of fun if you are a devoted masochistic."

Only after I finished the distance could I really respect the Greek messenger who died after he accomplished the mission. But, there ain't no message that important.

Thank God for telephones.

Here comes

BRIGHT

A fresh new taste experience that outshines menthol.

It not only tastes fresher while you smoke. It even leaves you with a clean, fresh taste.



You never had it this fresh!

7 mg. "tar", 0.5 mg. nicotine av. per cigarette by FTC method.

Warning: The Surgeon General Has Determined That Cigarette Smoking Is Dangerous to Your Health.

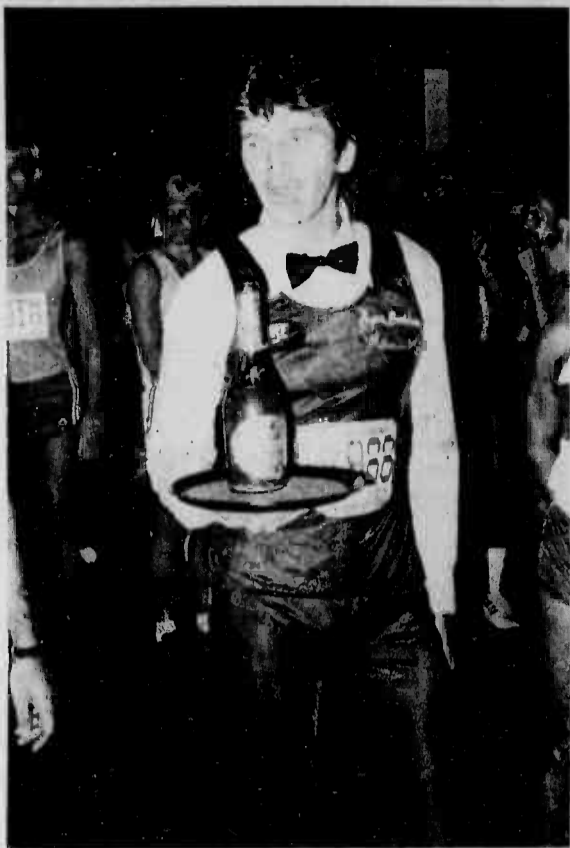
WE BUY

GOLD · SILVER · PLATINUM
 DIAMONDS · WATCHES
 U.S. & FOREIGN COINS

HONOLULU
 740 KAPAHULU
 735-7388

Prestige

KANEHOE
 46 210 KAHUHA
 247-5477



LE GARÇON — Of all the novelty runners in the 10th Annual Honolulu Marathon, Roger Bourbaum completed the race in a waiter's uniform. His time wasn't all that good but the wine was at the finish line. (Photo by Sgt Pepper Davis)

SEWING MACHINE TRUCKLOAD SALE

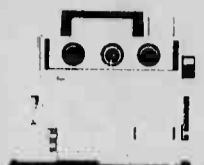
CALL NOW
262-8131



BERNINA

Buttonholes
Free Arm
Self-adj. Tension
Monograms
Swiss Quality
#800 Demo's

RETAIL \$649
NOW
\$299



VIKING

Buttonholes
Overlock
Stretch Stitch
Free Arm
Blindhem
#5710 Demo's

RETAIL \$598
NOW
\$279



RICCAR

Buttonholes
Stretch Stitch
Blind Hem
Overlock
#8500 Demo's

RETAIL \$598
NOW
\$249

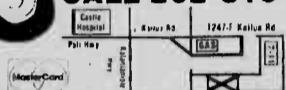
FREE SEWING MACHINE INSTRUCTION WITH PURCHASE
"EXCLUSIV" 25-YEAR WARRANTY — DEALERS WELCOME

PACIFIC SURPLUS & DISTRIBUTORS LTD

HOURS:

Mon., Thurs. 9:30-9:00 p.m.
Fri. 9:30-8:00 p.m.
Tues., Weds. & Sat. 9:30-6:00 p.m.
Sun. 11:00-6:00 p.m.

CALL 262-8131



Six Days Only
Sale Ends
Monday
12/20/9 p.m.

GUARANTEED
LOWEST PRICES
IN HAWAII ON
ALL MACHINES



See your Career Planner

You'll get straight talk. Answers to your questions. And a fair look at all the Corps has to offer.

HqCo. 1st Marine Brigade
GySgt Johnson R.E.
Sgt White
257-3670/3404

3/3
SSgt Szweda
Sgt Jackson
257-2673

BSSG
GySgt. Mandoza
Sgt Duncan
257-3127

MACS-2
SSgt Denoi
257-2995

VMFA-212
GySgt Colbert
247-2024

CommSptCo
SSgt Santana
257-3143

FMFPac
GySgt Perry
477-6226

Marine Barracks—Pearl Harbor
SSgt. Hall
471-9519

HqCo. 3d Marines
SSgt Alldrege
257-2758

1/12
Sgt Allen
257-3225

MAG-24
GySgt Malconian
257-2285/2012

HMM-165
Sgt Jeffra
257-2489

VMFA-232
SSgt Pletrzak
257-2623

H&HS
SSgt Garcia
257-2841/3653

Marine Barracks Hawaii
SSgt Chavira
471-9519

You can count on the Corps.

To deliver.

In the Corps, you don't have to worry about a big medical bill when your child is delivered. Because low-cost medical care is available for the entire family. Plus you don't even have to pay insurance premiums for this coverage. Now what civilian job can offer that? It's just one of the advantages a Marine family has. When you add up security and pride in the Corps, medical, educational, retirement and other benefits, you've got some good reasons to...

Stay Marine.



Sportsnotes

Special Services Ticket Outlet has tickets for the following games: Aloha Bowl, Hula Bowl and Pro Bowl. Tickets for the Aloha Bowl to be played Dec. 25 are \$12.50 and \$10 the Hula Bowl to be played Jan. 15 are \$10 and the Pro Bowl to be played Feb. 6 are \$12.50 and \$10. All games will be played at Aloha Stadium. Only a limited supply of each set of tickets are left, so purchase them as soon as possible.

The deadline for written resumes for the 1983 All-Marine programs in the following sports are:
 wrestling Dec. 22
 powerlifting Jan. 12
 Resumes should be submitted to the Athletic Office as soon as possible.

The Hawaii Marine men and women regional volleyball team will be conducting tryouts. For more information contact the coach, Gunnery Sergeant Ed Arita at 257-2348.

There will be a skeet tournament at the MCAS Skeet and Trap Range on Saturday beginning at 11 a.m. Competition is open to all eligible personnel. For more information, call John Daniels — 257-3108.

The Intramural Basketball Championships at Hangar 103 will have the following first game times: Saturday 5 p.m. (4 games), Sunday 5 p.m. (4 games), Monday 5:30 p.m. (3 games) and the rest of the schedule is posted at Hangar 103. The final game will be played Dec. 23 starting at 7 p.m.

Resumes should be submitted to the Athletic Office as soon as possible for track and field as well as boxing hopefuls.

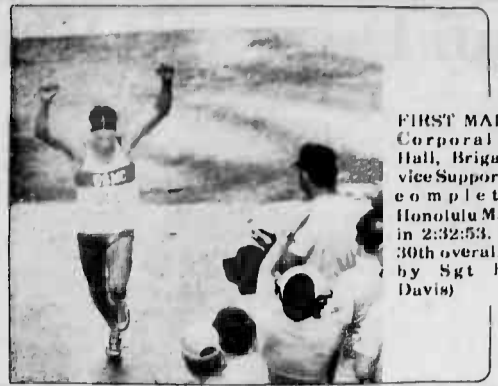
Women's exercise body building classes in the Mini-Gym at 8 p.m. have been temporarily discontinued for the coming holidays. Classes will resume Jan. 3.

An Organizational meeting for Intramural Soccer will be conducted Jan. 12 at noon in the Station Theater Lobby. There was no program last year due to lack of interest, however, the program will be restored if units become involved and enough team reps attend the organizational meeting. All units are encouraged to enter a team.

An Organizational meeting for Track and Field will be conducted Jan. 5 at noon in the Station Theater Lobby. If enough interest can be generated a Varsity Track team will be formed for participation in local events. All

Marines (men and women) interested in supporting or participating this program are urged to stop by the Athletics Office to register.

The Kaneohe Marine Karate team placed 7th in overall competition in the 1982 11th Annual United States/Republic of the Philippines Martial Arts Championship. Staff Sergeant David Brown, Headquarters Company, 1st Marine Brigade won first place in the overall individual black belt kata division. Karate enthusiasts are urged to call SSgt Brown at 257-2228, 2651 in regards to the air station karate team.



FIRST MARINE — Corporal Bruce Hall, Brigade Service Support Group, completes the Honolulu Marathon in 2:32:53. He was 30th overall. (Photo by Sgt Pepper Davis)

“Be a Pepper” Sweepstakes!

Win a years supply of



and Dr Pepper



for a family of four!

Just clip the entry blank from this issue of the Sun Press and send it to Dr Pepper in Honolulu. You could win the drawing for four Dr Pepper T-shirts in any combination of sizes . . . plus a year's* supply of Dr Pepper (regular or sugar-free).

NO PURCHASE NECESSARY. And remember—to be a Pepper, open up a Dr Pepper . . . and all you gotta do is taste!

OFFICIAL ENTRY

“Be a Pepper” Sweepstakes!

Send to: “Be A Pepper” Sweepstakes
 P.O. Box 30068, Honolulu, HI 96820

NAME _____ PHONE _____

ADDRESS _____

CITY _____ ZIP _____

RULES:
 Entries must be received by December 31, 1982. Drawing January 7, 1983. Winner need not be present to win; winner will be notified by phone or mail. Prizes to be picked up by winner at the Dr Pepper Bottling Company. Any Hawaii resident is eligible except employees and family members of Dr Pepper Bottling Company and its agencies. Use entry form in this newspaper or facsimile. Enter as often as you wish; however, each entry must be completed by hand. Mechanically reproduced entries are void.

*One 12 pack per week

MONTESSORI MUSIC WORKSHOP
 conducted by
MARTHA BRANDEN JONES
 December 16, 17, 18

An intensive course that will look at musical experiences as an aid to building character in the child from birth to 12.

As an added bonus Ms. Jones will perform a first in Hawaii.

CHILDREN'S RECITAL December 18
 For additional information
 422-5501

ROYAL VELVET SCHOOL OF DANCE
 Get The Fever!
 Dance Into THE NEW YEAR
 Special 1/2 PRICE
 On All Dances
 Offer good till Jan. 1
 1418-A Kapiolani Blvd.
 945-7788

LAW OFFICES OF NOAH D. FIDDLER
 GENERAL PRACTICE OF LAW

- Personal Injury/Accidents
- Divorce/Adoption
- Commercial/Business
- Bankruptcy
- Criminal Defense/Drunk Driving
- Wills
- Real Estate
- Immigration
- Military

Serving Windward Oahu
 415-A Uluniu Street
 Kailua, Hawaii
 Free Initial Consultation
 261-3233

Fine food for the service.
THE RESTAURANTS AT THE HALE KOA.

7094 KALIA ROAD / HONOLULU / HAWAII 96815
 CALL FOR RESERVATIONS (808) 955-0546

Bull Dogs and Raiders team up to win Friendship Bowl

by Cpt Charlie Marshall

The Kaneohe Bull Dogs completed a winning season Sunday by teaming up with the Schofield Raiders to win their game in the 6th Annual Pan American International Friendship Bowl, 1982.

The Bull Dog-Raider team took on a team made up of the Kalaikua Monarchs and the Wheeler Rainbows and played 32 minutes of hard hitting football in Aloha Stadium.

Each team ran six plays and then surrendered the field to their co-team for six plays.

Kaneohe found the going tough at first, but then converted a Wheeler fumble (which was recovered by Schofield) into a touchdown. Schofield immediately took charge after the fumble and quarterback Jason Lau marched his team down to the 27-yard line where Kaneohe took over.

Bull Dog William Aviu picked up 11 yards running a sweep to the left side and, on the next play, Dave Roberts carried the ball around the right side for the touchdown and an early 6-0 lead.

Neither the Rainbows nor the Monarchs could penetrate the combined defenses of the Bull Dogs and the Raiders. Their quarterbacks were caught behind the lines for big losses, hard hits caused fumbles and the challengers were held to two first downs for the whole game.

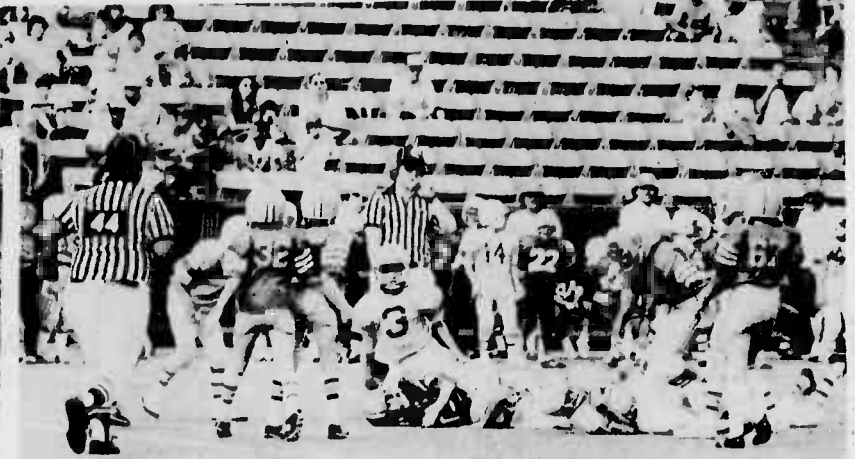
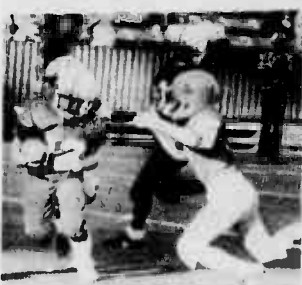
Schofield's Everette Miller-Randell Harris passing team resulted in big yards and two touchdowns. When Miller wasn't throwing the ball he was rushing for the yards.

Preventing a shutout, Kalaikua's Brady Louis ran 15 yards for their only score.

First Lieutenant Wade Blount, coach of the Schofield Raiders said, "Miller is like a miniature

Lynn Swam. They just couldn't stop him."

His post game comments were, "This is the best game my team has played all year. This is a great festival event and we hope to return next year."



CLEAN SWEEP Specials

LIMITED QUANTITIES
ON ALL MERCHANDISE
All items subject to prior sale
Sorry, no layaway on Clean Sweep Sale items.

CHRISTMAS SHOPPER'S COUNTDOWN

HOURS OF OPERATION
Monday-Saturday 9:30 a.m.-8:30 p.m.
Sunday 9:30 a.m.-5:30 p.m.
Phone — 422-9449

Items available at NEX PEARL Johnson Circle and selected NEX PEARL locations on Oahu

<p>5-Spd. Hand Mixer Sunbeam 3-76, Almond, Reg. \$20 \$15⁰⁰</p> <p>SilverStone Fry Pan Toastermaster #801, Reg. \$20.50 \$15⁰⁰</p> <p>Deep Heat Massager Pollenex, Reg. \$13 \$9⁹⁵</p> <p>Food Processor G.E. #FP-1, Reg. \$50 \$40⁰⁰</p> <p>10-Cup Coffee Brewer Mr. Coffee #CM-1Z, Reg. \$22.50 \$19⁰⁰</p> <p>Food Processor Cuisinart DLC 7E, Reg. \$180 \$165⁰⁰</p> <p>Upright Vacuum Eureka #14581, Reg. \$80 \$59⁰⁰</p> <p>Canister Vacuum Eureka #3760A, Reg. \$110 \$75⁰⁰</p> <p>6-Spd. Blender Hamilton Beach #626K, Reg. \$22.50 \$19⁰⁰</p> <p>Electric Knife, Gold Hamilton Beach #275, Reg. \$13.50 \$9⁹⁵</p> <p>Rototract Triple Header Razor Norelco #HP1601, Reg. \$44 \$35⁰⁰</p> <p>Lady Bug Deluxe Razor Norelco #HP2115 Reg. \$23 \$17⁰⁰</p> <p>30-Cup Urn, Almond Westbend #57130, Reg. \$20.50 \$15⁰⁰</p> <p>55-Cup Urn Westbend #13500, Reg. \$53 \$40⁰⁰</p> <p>10-Cup Coffeemaker Mr. Coffee #MCS-201, Reg. \$33 \$24⁹⁵</p> <p>Coffee Filters/200/BX Mr. Coffee UF200, Reg. \$1.35 95^c</p> <p>Replacement Glass Decanter Mr. Coffee 10-Cup D-7, Reg. \$4.80 \$3⁴⁹</p> <p>4-Slice Toaster Proctor-Silex #T522B, Reg. \$20 \$15⁰⁰</p> <p>2-Slice Toaster Proctor-Silex #T620B, Reg. \$12.25 \$9⁹⁵</p> <p>3 1/2 Qt. Slo Cooker Rival #3100H, Reg. \$14.50 \$10⁹⁵</p> <p>3 1/2 Qt. Crock Pot w/Server Rival #3150X, Reg. \$24.50 \$19⁰⁰</p> <p>5 Qt. Crock Pot w/Server Rival #3350H, Reg. \$28.50 \$21⁹⁵</p> <p>Corn Popper Westbend #25467, Reg. \$12.25 \$10⁰⁰</p> <p>Deep Fryer Fry Daddy National Presto #05420, Reg. \$22.50 \$15⁰⁰</p> <p>Can Opener Rival #753R, Reg. \$11.50 \$8⁹⁵</p> <p>8-Cup Poly Perk Regal #K7508, Reg. \$9.75 \$8²⁵</p>	<p>Assorted Totes, Carry-Ons & Duffles 25% OFF</p> <p>24" Pullman Black, Monarch #230-24, Reg. \$21 \$15⁰⁰</p> <p>Samsonite Traveller #556224 Sonora Wineberry Reg. \$52 \$39⁰⁰</p> <p>3" Accord Attache Black, Cinnamon, Brown, Reg. \$59.50... \$49⁰⁰</p> <p>5" Accord Attache Black, Cinnamon, Brown, Reg. \$62.50... \$49⁰⁰</p> <p>Satin Sheets Mr. Satin, Limited Quantities Reg. \$57-\$73 \$38⁰⁰-\$49⁰⁰</p> <p>Feather Down Pillows Purofied Down, Reg. \$27-\$40 \$20⁰⁰-\$30⁰⁰</p> <p>Selected Toys & Wheel Goods 25%-50% OFF</p> <p>Shopping Bags Strolee 190, Reg. \$4.40 \$3³⁰</p> <p>Caboose #119, Reg. \$13.75 \$10³⁵</p> <p>Top Deck Chair #312, Reg. \$13 \$9⁷⁵</p> <p>Gates Worlds Best #733 & #276 Reg. \$7 & \$11 \$5²⁵ & \$8²⁵</p> <p>Cord Jeans Levi Sizes 2-14, Reg. \$7.50-\$11 \$5⁶⁰-\$8²⁵</p> <p>Breast Pump Evenflo #52102, Reg. \$2.15 \$1⁶⁰</p> <p>Selected Picture Frames Intercraft 30% OFF</p> <p>Cheer Detergent 49 oz., Reg. \$2.20 \$1⁶⁵</p> <p>Afro Sheen Hair Spray 6 oz. #310, Reg. \$1.50 \$1¹⁰</p> <p>Sno-White Label Cotton Swabs 180's #72204, Reg. 76c 57^c</p> <p>Pinochle Double Deck Cards Kem, Reg. \$8 \$6⁰⁰</p> <p>Poker Arrow Single Deck Cards Kem, Reg. \$4.50 \$3³⁵</p> <p>Old Fashioned French Dressing General Foods, Dry, Reg. 49c 3/\$1⁰⁰</p> <p>Garlic Salad Dressing Dry, Reg. 49c 3/\$1⁰⁰</p> <p>Yuban Ground Coffee 3 lb. Can, Reg. \$9.75 \$7³⁵</p> <p>V-8 Vegetable Juice 6 oz., Reg. 20c 10^c ea. or 3/25^c</p> <p>Tomato Juice 6 oz., Reg. 19c 10^c ea. or 3/25^c</p> <p>Dad's Root Beer 12 oz. Cans, Reg. \$4.60 \$2³⁰</p>	<p>DeCorian Storage Ottoman Reg. \$85-\$90 \$65⁰⁰</p> <p>All Samsonite Bar Stools 15% OFF</p> <p>Gas Propane Tank Weber Refillable Assorted Sizes, Reg. \$45.50 Limited To Quantity In Stock \$36⁰⁰</p> <p>Workmate (Mitre & Saw Guide) Black & Decker, Reg. \$28 \$22⁰⁰</p> <p>E-pox-e Glue #EPX-1, Reg. 90c 70^c</p> <p>Fixture Adhesive FA-1, Reg. \$1.15 90^c</p> <p>Plastic Aluminum SPA-1, Reg. \$1.10 85^c</p> <p>Paint Rollers RC-100 9", Reg. 90c 70^c</p> <p>Garden Hose Swan 3/4x50 Ft., Reg. \$7.75 \$6⁰⁰</p> <p>Speedy Mower 16", Reg. \$41 \$32⁰⁰</p> <p>Sand Chair #52, Reg. \$7 \$5⁵⁰</p> <p>Chair P.V.C. Style #719, Reg. \$19 \$15⁰⁰</p> <p>Chaise P.V.C. Style Reg. \$29.50 \$22⁰⁰</p> <p>151 Qt. Cooler Igloo, Reg. \$160 \$120⁰⁰</p> <p>Rotary Lawn Mower Wheeler #WE-22, Reg. \$120 \$96⁰⁰</p> <p>36 Qt. Trash Can Tucker, Reg. \$4.10 \$3²⁵</p> <p>32 Gal. Trash Can Reg. \$14 \$11⁰⁰</p> <p>24 Gal. Trash Can Reg. \$8.50 \$6⁰⁰</p> <p>Tripod #VG-3 Velbon, Reg. \$38 \$32⁰⁰</p> <p>Ektra 1 Camera Outfit Kodak, Reg. \$18.99 \$11⁹⁹</p> <p>Instamatic X-15F Camera Outfit Reg. \$19.50 \$12⁷⁵</p> <p>SX-70 Camera Polaroid, Reg. \$127.50 \$99⁰⁰</p> <p>Practice Shag Bag Ajay, Reg. \$9.75 \$7³⁰</p> <p>Ground Cover Tarp Reg. \$5.70 \$4²⁵</p> <p>Day Hiker Back Pack Johnson Camping, Reg. \$16 \$12⁰⁰</p> <p>Slimmer Belt Dynamic Classic #724, Reg. \$7.50 \$5²⁵</p> <p>Aluminum Mess Kits Nelson #601, Reg. \$9.75 \$7³⁰</p>
--	--	---



LET'S GO TEAM - The winners of the Youth Cheerdown '82 in the Midget Division are: (front row, l to r) Demeka Jennings, Gwendolyn Williams, Diana Yeager; (back row) Melissa Roberts, Dawn Baranski, Amy Haldt, Yolanda Jeter, Wendy Mitchell, Shelley Garcia and Shawn Albaugh.

Bull Dogs top Cheerdown

The Falcon Youth Booster Club of Hickam Air Force Base held its Annual Cheerleaders' Competition Dec. 3 - "CHEERDOWN-1982".

The air station was well represented with three squads, the Bull Dogs in the Termite Division (ages 9 and 10); the Devil Dogs in the Pee Wee Division (ages 11 and 12);

and the Leathernecks in the Midget Division (ages 13 and 14). These squads are part of the Dependent Youth Athletics Association aboard the station.

The Kaneohe Bull Dogs were awarded the trophy in their division. They were competing against four other squads.

They were judged on their

gymnastic abilities, transition from cheer to cheer, overall appearance and a four minute routine. The judges were from University of Hawaii and Chaminade University cheering squads.

This year, the K-Bay Cheerleaders returned with one trophy, but the girls are planning to take all the trophies next year.

Stay Marine.

PERM SPECIAL

- Conditioner
- Shampoo
- Perm
- Cut and
- Blowdry

\$35

Long Hair More



- MANICURES \$8.00
- ACRYLIC TIPS \$30.00
- ACRYLIC NAILS \$40.00

INTERNATIONAL HAIRCUTTERS

"Where Quality Is Uncompromising In Cost"

Alkahi Park Shopping Center, Kailua

254-1585

RUDOLF HELPS SANTA . . . WE HELP SANTA TOO!!!

You'll find a sleigh full of holiday dollars by selling your spare (full or unwanted) treasures!

Call
235-5881
or
622-3966

***10 CEMETERY PLOTS**
MILILANI Cemetery 16 plots, Gardenia section at 40% discount from current price. Call Bea 536-6983 or 847-1040.

***20 LOST & FOUND**
LOST Ladies New Balance shoes, color light blue/white, size 6 1/2, in Hawaii Kai area. REWARD 395-2617 after 5 p.m.

***15 ANNOUNCEMENTS**

***25 PERSONALS**

PENNY STOCKS
Offers great investments and opportunity. For free brochures call 523-0938. Ask for G. Kobayashi, eves. 735-3774. Chesley & Dunn, Inc.

***20 LOST & FOUND**
MISSING: Large fluffy gray tiger cat. Lives in vicinity of Country Club Knolls, Kailua. Please help me find my pet. REWARD Ph. 261-1055.

FOUND: Enchanted Lake area, December 11th, small kitten. Ph. 261-9471.

FOUND: Male kitten, Kaimua Valley. Call 395-9640.

LOST: Black Male Lab, 5 years old, Aiea area, Dec. 8th, answers to Boo. Ph. 254-4727.

LOST: Female Siamese cat, white/gray, 12/4 Kailua area, Reward Ph. 261-5707.

LOST: Female part Persian cat, tortoise shell, spayed, "Lani" Kaimua Valley 395-9640.

THIS IS AN OLD LINE . . .

You don't have to resort to long talk, battery or exaggeration to get your message across. Just pick up the phone and call 235-5881 and we will help you place a simple and direct low-cost want ad. That's loaded with sell!

CALL
235-5881

Have a friend who'd make a good Marine?

Then tell him about the Corps. By simply telling him about the jobs, skill and training opportunities available in the Corps, you could: Receive points toward a promotion; a meritorious promotion or extended leave. Your unit has full details. Refer to MCO 1130.62.

This is an excellent chance for you to do yourself and a friend a favor. See your hometown recruiter and help him sell the Corps to people you'd like to see in a proud Marine Corps uniform.



Marines
Maybe you can be one of us. The few. The proud. The Marines.

PEARL CITY HEALTH SPA
French, Swedish, Shiatsu massages avail. at this location.
Pearl City Business Plaza
803 Kam Highway
455-2585
\$5 OFF
Lic. Therapist

ASSISTANT CONTROLLER
Full time. B.S. in accounting or business administration, 1 year experience in health care and data processing required. Supervisory experience preferred.
Send resume to:
Personnel Office
Wahiawa General Hospital
P.O. Box 580
Wahiawa, Hawaii 96786
An Equal Opportunity Employer

GET TOUGH ONE WEEKEND A MONTH AND GET A \$2,000 BONUS.

Think you're tough enough to be an Infantryman? Then your local Army Reserve unit would like to meet you. It needs people in Infantry and several other combat arms specialties. And you can qualify for a \$2,000 bonus when you enlist. The regular pay is pretty good, too. Over \$1,200 a year, to start. And so are the hours. Just one weekend a month and two weeks annual training. Interested? Stop by or call today.

ARMY RESERVE. BE ALL YOU CAN BE.

CONSIDER THE ADVANTAGES OF WORKING FOR YOUR UNCLE.

You support Uncle Sam when you work as a soldier in the Army. And Uncle Sam supports you right back.

We have over 300 skills from which you can choose. You can even choose to be stationed overseas.

The starting pay is over \$550.00 a month, which goes a long way, since there are no housing, food, or medical bills to pay.

If you qualify for the Army College Fund, you may put aside some of your pay for college, and the government will match your savings more than 5-for-1.

Call or visit your local Army Recruiter to find out more. It could be to your benefit.

ARMY. BE ALL YOU CAN BE.

IN A FEW MONTHS, WE CAN HAVE YOU WIRING FOR MONEY.

Or repairing a computer. Or taking X-rays. Or taming a 250-horsepower engine. In fact, the Army can teach you one of over 300 different skills.

You probably realize it's going to take more than a diploma to get into fields like electronics, engineering, and medical technology. And you probably realize that training for these fields can get expensive.

But an enlistment in the Army can get you training in the skill of your choice if you qualify. And it won't cost you a thing. In fact, we'll pay you. You'll start at over \$550.00 a month, and we furnish the room and board.

For more information, call your local Army Recruiter.

ARMY. BE ALL YOU CAN BE.



RUDOLF HELPS SANTA... WE HELP SANTA TOO!!!

You'll find a sleigh full of holiday dollars by selling your garage full of unwanted treasures! Call 235-5881 or 622-3966

25 PERSONALS 35 PROFESSIONAL SERVICES 54 SCHOOLS & TRAINING 50 BUSINESS OPPORTUNITIES

Grid of various professional services including Porcelain, Fiberglass and Marble Repairs, Designer custom-made alterations, MASON Needs work, HOLIDAY PARTY, HOUSECLEANING, DIVORCE, PIANO TUNING, and more.

10 GOOD REASONS why your boy or girl should have a newspaper route. Includes a list of reasons and contact information for The SUN PRESS Newspapers.

FURNITURE FOR CHRISTMAS? FILL YOUR HOUSE WITH JOY AND BRAND-NEW FURNITURE FOR CHRISTMAS WITHOUT SPENDING ALL YOUR HOLIDAY DOLLARS. RENT-TO-OWN "Santa Never Had It So Good"

CLASSIFIED INDEX and CLASSIFIED ADVERTISING RATES & REGULATIONS. Lists various categories like Aircraft for Sale, Automobiles, and provides a detailed rate schedule.

YOU Asked For It! To suit the needs of both buyers and sellers, the Classified section of your newspaper makes it convenient for you to advertise and buy those special items. Includes ads for Baby Furnishings, Jewelry & Clothing, Photo Supplies, Hardware & Equipment, Lawn & Gardening, Hobby & Craft Supplies, and TVs and Stereos.

LEGAL NOTICES and TRAFFIC CONTROL DEVICES. Includes a detailed traffic schedule and various legal notices regarding traffic regulations and public safety.

ANSWER TO DEC. 8 CROSSWORD IN THE SUN PRESS NEWSPAPER. Includes a crossword puzzle grid and the answers to the clues.

HELP WANTED M/F

MILITARY BROKE? EVEN ON PAY DAY Earn extra money part time 5:30 to 10 p.m. Mon. thru Fri. Worked in discount outlets specializing in dresses, televisions, microwave ovens & many more appliances. Also buying service for furniture, clothing, sporting goods, etc. Following areas available. Home, Pearl Harbor, Sali Lake, Waiawa, Barbera Point & KUCAS. \$6/hr. or incentive pay. Call 487-3651 speak to Mary

HELP WANTED M/F

GOOD JOBS ARE AVAILABLE! Professional resumes open doors. Military Specialists. Free Consultation. PROFESSIONAL RESUME SERVICE 735 Bishop St. #238 521-7911. Established 1977. HOLIDAY Gift Buying. Need extra cash for the holidays? World Book-Children's International, Inc. has the answer. Join us at either full time or part time sales representative. Excellent commission. Flexible hours. Call Vera Krinke at 261-8554, 2-4 p.m.

GARAGE/LANAI SALES

FOLK Art Favorites in Stoneware Handcrafted, inexpensive. Custom orders avail 7 days a wk. 7:30-4:00 262-1576, 377 Auwahi Rd., Kailua. HIG Garage Sale, 12/16 and 12/28, 9-5 p.m. Very Cheap! 45-460 Koa-Kaniko Street. SAT. 9-3, Dec. 18, 94-249 Kuanaloa Lp. Milliani. Furniture, household appliances, plants, tools.

GARAGE/LANAI SALES

BABY Furn. refig. sewing machine, clothes, books, misc., Sat. 12/15 9-5 p.m. 45-310 Kulaohi St., Kaneohe. REDUCTION IN INVENTORY SALE Wholesaler of Toys, Gifts, Greeting Cards Sat., Dec. 18th, 8 to 4 p.m. 1906 Kahaal Street Kahaal, Kailua Hawaii

HOUSES PART. FURN.

KAILUA, studio cottage, air bus, shopping & beach, single unit, no pets, \$325 incl. utils. Ph. 262-8457 ask for Kay. SALT Lake: Upper duplex, 3 bdrm., 2 bath, \$700 w/ utils. Kay, 941-4222, 944-1555. KAILUA, Enchanted Lake, 2 bdrm., all appliances, \$1200 incl. parking, Ph. 262-2668 after 6 p.m.

ROOMS FOR RENT

VIEW of mountain and ocean, pool, Hakuu, Hana, rate & req. required. Officers/NGO or professional person preferred. \$900 mo incl. utils. Call 247-6804. ROOM with bathroom for rent, kitchen privileges, \$275 mo. incl. utils 239-5015 evos. *93 VACATION RENTALS KUILIMA: 1 bdrm. fully furnished apt., no pets. Call 239-8539. BEACHFRONT Condo, near Crouching Lion, Week month, pool. Ph. 235-8198.

REAL ESTATE FOR SALE

HAIKU Village Center 3 bdrm., 2 bath home with mountain & ocean view. Quiet location. Close to schools, college and shopping center. 8% assumable VA loan. Call 235-0836 for appointment. MINNESOTA, the possible dream: 5 fabulous trees covered acres. Incredible hunting, fishing, farming & snowmobiling. Many lakes, close to major city. Electric and phone available. \$6000 full price \$6000 down. \$66.66 a mo including 10% interest. Call 595-3692.

FURNITURE

KAMA'AINA USED FURNITURE French Prov. bdrm. set, baby crib; double bed like new, twin beds w/frame, bunk beds w/mattress, standing closet, china cabinet, chest bed w/matching drawers, dinette w/walnut chairs, 4 or 5 drawer chest, queen & double hide-a-bed, office desks w/chairs, coffee & end tables, bar w/ stools, floral print sofas, bar refig., antique bdrm. set & much more arriving everyday. WE ALSO PAY TOP CASH FOR USED FURNITURE. Call 488-1985 (behind Culler Ford Area) Open 7 days. BEDROOM set, sofa, 2 chairs (classics), Carpets, brass & copper. Call 422-0161. COFFEE Table, \$15. Phone 237-8030. QUEEN Flotation, \$325, Sears crew's blankets, \$475. Brown sofa bed, \$500. Ph. 396-5346.

FURNITURE

COUCH \$95, 2 easy chairs \$75 ea., Admiral console stereo \$80, double contour recliner heater/massage \$299, bookshelf room divider \$150, 623-1702. NEED a bed for the holidays? Weekly/monthly rates. All sizes. Delivery & Pickup. COO phone orders accepted. Bed Rental & Sales Hawaii Ph. 677-3939. COUCH \$11 year old \$300, utility table \$25, TV table \$25. Call 239-6195. FREE TO HURRICANE (WVA) VICTIMS: Couch, w/ table, settee. Call 235-5240. CHROME & glass matching coffee table and table, buffers, all for \$300. Ph. 487-5997 evos. FOR SALE: Living room set, buffet table and chairs, dresser & nightstand, 671-7711 evenings. RCA Console stereo, \$125, 8' gulf brocade sofa, \$375; record cabinet \$35; dining table, \$25, desks, \$50 & \$65, 247-0523. SPINDLE Bunkbeds w/ drawers, exc'l. cond., \$120. Call 261-8344. OLD Prudstall tables, picture frames, lamps. Call 261-2474.

RESUME

NEED A Resume? Call Mr. Pool 9 a.m.-9 p.m. 235-5112 or 595-4908. Mobile Resume Services. Former AMWAY Distributors WANTED for NEW PROFITABLE Marketing Plan. 239-7287. l. msg.

REAL ESTATE DEVELOPER

In expanded Windward office needs: 3 Full time self-reliant realtors or associates. Any sales persons with interior decorating, Architectural or bookkeeping background would be welcome. Excellent commission schedule for those who qualify. All inquiries will be kept confidential. CALL 235-6020 for appointment. Walter Zane Realty, Inc. Kaneohe Business & Professional Center, suite 208 Kaneohe, HI 96744.

FUND RAISING GARAGE SALE

FUND RAISING Garage Sale on Hammon Circle in Cullin Park, Dec. 18, 9 a.m. on. XMAS Special Plant Sale, bargain prices, variety of cactus & many other plants. Sun., Dec. 19, 9-3 p.m., 139 Omao St., Kailua. SALE: 703 Wanaao Road, Enchanted Lake, now to used furn., lamps, toys, etc. Fri., Sat., Sun. 10 a.m. to 5 p.m. XMAS crafts & garage sale, now & used items. Clothes, toys, books, lots of bargains. Sat. 8-4 p.m., 548 Kipuke Pl., Kailua, off Oneawa St. MOVING! Must sell King-size water bed, twin beds, tables, recliner chair, shell units, Copper Craft, lamp set, ship's wheel & decor, dishes, tools & much more! Sat. 12/18, 92-630 Kohupono St., Makakii.

APTS. FULLY FURN.

PUNALUU Studio w/kitchenette, Furn., linens & dishes. \$275 incl. incl. 262-7806. KAILUA: 1 bdrm. apt., utils & parking incl., single working person only \$325 mo. Ph. 262-4013 after 6 p.m. *73 APTS. FULLY FURN. PUNALUU Studio w/kitchenette, Furn., linens & dishes. \$275 incl. incl. 262-7806. KAILUA: 1 bdrm. apt., utils & parking incl., single working person only \$325 mo. Ph. 262-4013 after 6 p.m. PEARL HARBOR 2 bdrm., 2 bath apt. on wly. rates. Nr. base. Children welcome. Awaiting housing? No allergies or oil TLA? Pepper Tree Apts./Hotel Ph. 488-1993. *76 RENTALS TO SHARE

ROOMS FOR RENT

KANEOHE - country comfort at Hokuola, Elegant former model, 4 bdrm. 7 rooms plus 2 1/2 baths & 3 lanais. Tennis courts right outside, pool, sauna area nearby, enclosed garage, loaded with extras. \$775. Call J.D. Petroti at work 531-0254, even. 923-3088. WAIMALU, 2 bdrm., 1 1/2 bath, stove, refig., washer/dryer, fully carpeted. 623-7377. KANEOHE, Haiku Gardens, 3 bdrm., 2 bath, 1675 mo. Ph. 247-3786. WAIPIO, Zero down, 3 bdrm., 2 bath, corner unit w/2 lanais, pool, rec. area, playground for kiddies. Charmaine Weinberg, 735-2336 (RA) Mike McCormack Realtors. Fee. MLS now.

RENTALS WANTED

SINGLE working woman, needs studio, excl. local refs. Ph. 261-4287 evos, 257-2919 days. *103 OFFICE FOR RENT KAILUA 630 sq. ft. of commercial space, \$650 mo. 1168 Waihi St. Ph. 261-2861. *88 ROOMS FOR RENT FURNISHED room in Ewa Beach, \$130 mo. incl. utils. Call 689-5315. ROOMS for rent in Waipahu, close to bus line \$175 per mo., incl. single ok. Call 671-3189 or 374-8404.

REAL ESTATE WANTED

WANTED Kahaala/Niu Valley home, 2 bath, low down by Feb 15. Call 235-1988. *116 REAL ESTATE WANTED SOFA, new, 8 1/2 ft. 3 pc. half price, child's 11 pc. modular desk set \$95 923-3661. *118 JEWELRY & CLOTHING LADIES Watches: 14 K gold Rolex, \$1800 offer; 14K gold & diamond, \$750 offer. Pearl necklace & diamond earrings. 947-8405. *120 FURNITURE DELUXE King size water bed complete, \$800. Ph. 237-7070. PARADISE USED FURNITURE King size wicker bdrm. set \$650. Queen size sofa bed \$1000. New 1295. Twin beds \$100. \$150. rattan love seat \$125. rattan/glass end table \$75. beautiful queen size Brooklyn bdrm. set \$1100. 7 pc. rattan iron patio set \$295. 5 pc. rattan/wicker din. set \$495. baby changing dresser \$125. compact desk - must see \$225. student desks \$45. 5 pc. patio set \$195. 7 drawer unfinished dresser \$130. occasional chairs from \$65. occasional wicker rockers from \$150. Also, lamps, room divider, dressers, tables & much more. 261-8492 320 Ulunui St. Kailua. WE ALSO BUY USED FURNITURE.

TEACHER

HEAD Teacher: Kaneohe Preschool BA Education or equiv. 2 yrs. exp. teaching & supervision. Submit resumes to L. West, 32 Kaneohe St., Suite 201, Kailua, HI 96734.

EXTRA INCOME

NEED Extra income?? Earn it in your spare time. Call 488-5867 for appl.

HELP WANTED SALES

NEED 10 people to sell fashions, will train, full/part time, commissions + free fashions. 623-9727. *62 HELP WANTED DOMESTIC BABYSITTER Needed, 4 yr. old girl, Schofield area, 7-5 p.m. Mon-Fri., Ph. 655-9372. TUTOR Wanted for home schooler, must be certified. Call 942-3786 or 396-6655. BABY sitter needed for 6 year old girl. Occasional evenings and during school vacation at my home near Aiea Elementary School. Teenager ok. Call 488-8217 after 6 p.m. CLOTHES, VW parts, misc. Sat. 12/18, 9-5 p.m., 45-480-C Apeki St., Kaneohe. SAT. 9-4: 1011 Kahlil St., Enchanted Lake. Stereo, 16mm movie equip, collectors editions Model Railroad magazines, records, clothes & misc.

LIBERAL MALE

LIBERAL Male, 31, looking for apt. to share w/same. Windward area. Need immed. Call 235-3791, John, evos. WORKING Female to share w/same, 3 bdrm., 2 bath house. \$250 + utils. 262-8090 6 p.m.

RENT IT!

THOSE DOGGONE VACANES COST \$\$\$ FULL EM FAST WITH A LOW COST WANT AD 235-5881. THOSE DOGGONE VACANES COST \$\$\$ FULL EM FAST WITH A LOW COST WANT AD 235-5881.

OFFICE SPACE

KANEOHE OFFICE SPACE [Excellent location across new Windward Mall Shopping Center.] 3-story beautiful garden bldg. Present tenants: Castle Memorial Hosp., X-Ray and Health Center. Physicians of many specialties. Territorial Savings & Loan, Beautician, Travel Bureau, Real Estate Developers. Offices available from 650 sq. ft. to 1500 sq. ft. Beautiful open beam. Excellent Allowances. WALTER ZANE REALTY, INC. 48-005 Kawa St., Kaneohe PH. 235-6020.

REAL ESTATE FOR SALE

NANAKULI, 4 bdrm. townhouse, overlooking park, covered lanai, \$52,000. \$20,000 under '81 appraisal. Owner says sell, terms. Joy Real Estate, 671-6395. QUIET 2 bdrm., 2 bath in Haiku Gardens, pool, 2 parking stalls, convenient location, low/no down, VA assumable. By owner. 235-6993.

MILITARY WIVES

Spent Easter with mom and dad. We need parttime workers immediately to train for our newly established, discount outlet. Now is the time to start making extra money for your holiday trip home or to bring Grandma over for a Hawaiian vacation. 5:30 to 9 p.m. \$6.00 per hour/incentive plan. For interview ask for Judy. Call 486-0173.

EXCELLENT CHILD CARE

EXCELLENT Childcare in my home. Phone 235-4311. EXPERIENCED Mother will babysit full-time weekdays. Prefer active duty solo parent but not a necessity. Call 235-8234. WILL Babysit for children, 3 years and under in my home. H.A.F.B. 423-1545. CHRISTIAN licensed day care, academic program, TLC, potty trained only 262-9455. SENIOR Citizen Convalescent Day Care or live-in provided in my home. TLC. Excl. refs. 262-9455.

THOSE DOGGONE VACANES COST \$\$\$

THOSE DOGGONE VACANES COST \$\$\$ FULL EM FAST WITH A LOW COST WANT AD 235-5881.

THOSE DOGGONE VACANES COST \$\$\$

THOSE DOGGONE VACANES COST \$\$\$ FULL EM FAST WITH A LOW COST WANT AD 235-5881.

YOU CAN COUNT ON CLASSIFIED.

1 To help you sell faster you don't need... 2 To help you find items you want to buy... 3 To help you find people to rent or make an investment... 4 To help you publish an event or make an announcement... 5 To help you save money and get... 235-5881.

KAILUA JOBS

Secretary to \$200 mo. Reception/Sales \$700 up. Full time sales clerk \$580 up. Dental Ass't. Trainee \$600. Cooks to \$850 mo. Many other jobs. Kokuu Employment 787 Kailua Rd., Rm. 207. COOK, part time, Kailua Preschool, 3 hr. per day. Call 281-8278.

EXPERIENCED MOTHER

EXPERIENCED Mother will babysit full-time weekdays. Prefer active duty solo parent but not a necessity. Call 235-8234. WILL Babysit for children, 3 years and under in my home. H.A.F.B. 423-1545. CHRISTIAN licensed day care, academic program, TLC, potty trained only 262-9455. SENIOR Citizen Convalescent Day Care or live-in provided in my home. TLC. Excl. refs. 262-9455.

DOLLHOUSES

and everything for them! Country Cousin 333 Ulunui Kailua - 261-4288. LANIKAI: Rm. w/bath in 3 bdrm. house across from beach, view, \$235 + utils, 262-7969. KAILUA, room for rent in 2 bdrm. apt. older woman to share w/same. \$325 incl. utils. 261-8286 after 6 p.m. ROOM for rent near Stadium. Ideal for military, \$250. Non-smokers call 487-2638.

THOSE DOGGONE VACANES COST \$\$\$

THOSE DOGGONE VACANES COST \$\$\$ FULL EM FAST WITH A LOW COST WANT AD 235-5881.

YOU CAN COUNT ON CLASSIFIED.

1 To help you sell faster you don't need... 2 To help you find items you want to buy... 3 To help you find people to rent or make an investment... 4 To help you publish an event or make an announcement... 5 To help you save money and get... 235-5881.

RN'S/LPN'S

Med Techs X-Ray Techs Respiratory Therapists Physical Therapists Nurses & Allied Health Professionals needed for Temporary Staff Relief Positions For Current & Future Openings On Oahu & Outer Islands. Kokuu Nurses & Para Professionals 538-2326 1210 Auahi St. Suite 223.

EXPERIENCED MOTHER

EXPERIENCED Mother will babysit full-time weekdays. Prefer active duty solo parent but not a necessity. Call 235-8234. WILL Babysit for children, 3 years and under in my home. H.A.F.B. 423-1545. CHRISTIAN licensed day care, academic program, TLC, potty trained only 262-9455. SENIOR Citizen Convalescent Day Care or live-in provided in my home. TLC. Excl. refs. 262-9455.

DOLLHOUSES

and everything for them! Country Cousin 333 Ulunui Kailua - 261-4288. LANIKAI: Rm. w/bath in 3 bdrm. house across from beach, view, \$235 + utils, 262-7969. KAILUA, room for rent in 2 bdrm. apt. older woman to share w/same. \$325 incl. utils. 261-8286 after 6 p.m. ROOM for rent near Stadium. Ideal for military, \$250. Non-smokers call 487-2638.

THOSE DOGGONE VACANES COST \$\$\$

THOSE DOGGONE VACANES COST \$\$\$ FULL EM FAST WITH A LOW COST WANT AD 235-5881.

YOU CAN COUNT ON CLASSIFIED.

1 To help you sell faster you don't need... 2 To help you find items you want to buy... 3 To help you find people to rent or make an investment... 4 To help you publish an event or make an announcement... 5 To help you save money and get... 235-5881.

WE SAVED \$876 LAST YEAR BY NOT SMOKING! Stop Smoking in 5 Days! SAVE YOUR MONEY AND YOUR HEALTH! without withdrawals or gaining weight... IT'S A PROVEN METHOD! WITH A MONEY BACK GUARANTEE! STOP SMOKING CENTERS OF HAWAII. PH. 487-0911 98-025 Hialeha St., Suite 7 Aiea, Hawaii 96701 Behind Culler Ford. Save \$25 with 120.

HOME IMPROVEMENT LUMBER. Beautify your home with one of these exotic woods. Plywood, Particle Board, Marine Plywood, Birch, Fir, Oak, Mahogany, Cedar, Walnut, Maple, Pine, Poplar, Purpleheart, Rosewood, Sapele, Shadblow, Spruce, Teak, Vermillion, Walnut, Wenge, Willow, Zebra wood.

MARGARET LOCKRIDGE, INC. SHOWN BY OWNER REAL ESTATE SERVICE 1 1/2 % YOU SHOW Member of Honolulu Board of Realtors, National Association of Realtors WE TRANSACT Our fee is 1 1/2% of the selling price. There is no initial charge for attesting our service. YOU SAVE Are You Interested? Give Us A Call! 262-8403 or 262-5307 829A Kailua Road, Suite 109, Kailua (Behind Kailua Hardware) SELLERS: Call For A Brochure BUYERS: Inquire into Our Numerous Listings

GARAGE SALE DRAW A BIG CROWD! FREE SIGN FOR YOUR GARAGE SALE!! Set the date and place an ad in the Classifieds and we will give you a FREE SIGN for your garage sale. Additional signs for only 25c each. CALL TODAY 235-5881 or 622-3966

Check Your SERVICE DIRECTORY For Fast, Quick Results. Appliance Repair, Floorcovering, Moving, Polynesian Dancing, Attorney, Floors And Upholstery, Painting, Roofing, Chiropractor, General Contracting, Construction, Handyman, Finance, Massage, Plumbing. Takuishi Therapeutic Shinkel Massage back problems or pinched nerves? 1048 Kani Key Rd #07 Ph. 247-2773 or 235-3215 By Appointment Only License No. MAS 0292

It Only Takes A Few Minutes To Place Your CLASSIFIED ADS Simply write your ad on the handy order blank describing each item you want to sell and be sure to give the price you want for it. List your phone number and the hours to call. Be sure to print, using a pencil, ballpoint pen or typewriter. Your ad will reach over 109,680 suburban homes on Oahu via the SUN PRESS, Waipahu Sun News, Hawaii Navy News, Hawaiian Falcon and Hawaii Marine. Deadline: Monday 4 P.M. for following Wednesday edition. *Deadline: Monday 11 A.M. for following Wednesday edition. ONLY \$175 per line per week Plus 4% State Tax; 3 Line Minimum. Name, Address, City, Zip, Phone Number, Classification Number. SUN PRESS TIMES TOTAL 5.46 + .83 = 6.12 7.28 + .84 = 8.15 9.10 + .85 = 10.19 10.92 + 1.28 = 12.23 12.74 + 1.47 = 14.27 14.56 + 1.68 = 16.31

ABC Furniture Rentals & Sales

•OPT-TO-OWN, 100% of rent applies to purchase

•Wide Selection of Items and Styles

•Fast Delivery

•No Long Term Commitment

SALES

New and Rental Returns

Large selections at Bargain Prices

Call 488-7741

98-115 Kam Hwy., Aiea (Across from Ana Miller's)

124 BABY FURNISHINGS

Child's complete, good condition. \$50. Call after 3 p.m. 261-8108.

126 MISCELLANEOUS

DISCOVERY Toys, looking for quality toys for Xmas? Use this ad for 10% disc. 373-4140.

GIRL'S Huffy bike

For sale. \$20. Call 622-1831

81 VESPA moped, gd cond.

\$275 plus offer. Call evenings 7-10 p.m. 623-5477.

LADIES Lavender jade ring

surrounded by 26 diamonds. \$3600 in stores. Need cash, list \$1300 takes. Also dia. ring, cheap private party. 239-5054.

BABY QUILTS for a special gift.

Wide selection. Call 235-2360.

LADIES diamond sunburst cocktail ring, containing one 1.07 CT diamond VVS2, color surrounded by 27 small diamonds T.W. 1.36 cts. Estimated at \$11,898. Need cash, list \$3,600. Also, diamond bracelet cheap. Fantastic Christmas Girls! Private party. 239-5054.

AIR CONDITIONERS - New & used for sale - with warranty.

Service & repair on all makes & models of room air conditioners. We pay cash for used & broken air conditioners.

CALL AIEA AIR CONDITIONING 487-7479

MARY Kay Cosmetics for Free

Key card and reorder call Elizabeth 262-0463

IBM DESK Copier, good for home use.

\$75. Phone Karen 533-4262 8-4-30 pm.

AUTOMATIC Doll house duracraft

lamin style, perfect for collectors. Offer 215-2081

SWINN girls 3 spd. bike.

red, cond. \$85. portable stereo, record player, sewing machine table \$25; pink dresser lamp \$5; roller skates women's size 7.5. 262-7943

TYPEWRITER Portable

w/Case, Smith Corona, pica type \$55. Call 235-1988

ELECTRIC clothes dryer \$75 & \$90.

IBM electric typewriter \$70. electric adding machine \$20. GE refrigerator \$145. 73 Yamaha 350 motorcycle, engine frozen \$40. 623-9388

WASHER \$128; dryer \$99.

color TV \$225. Microwave \$280. Both like new. 262-0324 anytime

CODE-A-PHONE 555 Ford

recording command, originally \$750. n/w \$150. Wood finish. 262-7223

McHOVEN Aloe Vera Products

Free facials 235-8395 days

126 MISCELLANEOUS

10 SPEED Women's cantonment bicycle, good cond. \$100. Call 235-1033.

COMPLETE Tamiya MongOOSE bike w/axits, w/oil \$300. asking \$150 or offer. Call 487-1830.

SURFBOARDS '82. Phil Edwards, \$100 offer. 7 Aiea \$125/offer. 20" Girls bike. \$35. Ph. 239-6425.

AUTO Air Conditioning charge analyze \$15.00 Ray 833-7190 after 4 p.m.

20" GIRLS Schwinn bike, excl. cond. \$85. Call 623-8958 after 5 p.m.

SURFBOARD customized, like new 6' 10" \$175. Call 261-5344

ROY'S LAWNMOWER REPAIR

Free Estimate

Lawn mowers for sale. Rotary \$75. Reel \$125. Guaranteed.

Discount avail. Call before Sat. 623-6688

YASHICA 35mm camera, TL-electro 135mm lens 2X converter, flash, Bell & HAF-70 slide projector. \$350. 239-6255.

129 TV'S. STEREO'S

ACA Video cass. recorder. VCT400 2/4 hr. excl. cond. \$375/offer. 239-6255

ANTIQUE Weigh yourself scale. \$500. stereo & console \$400. Ph. 261-2981.

121 WIKI WIKI FREEBEE

FREE Kittens & cats, many to choose from Healthy good mousers, kittens are darling! Pukukea Kitty Farm. 638-8198.

FREE: Xmas kittens available now. Beautiful markings. Val 395-8673.

FREE to good home w/yard, 1 yr. old Beagle mix male, all shots, very playful. Ph. 737-7779.

FREE: loving, healthy tortoise shell kitly, abandoned by owner who moved, all shots. 262-0817.

FREE TO HURRICANE IWA STORM VICTIMS: Couch, sofa, settee. Ph. 235-5240.

FREE: Shepherd/mix. 1 yr. female, white, spayed, shots, obedience. Ph. 696-3442 evens.

FREE: 2 German Shepherd/Collie mix, 1 1/2 old, well trained. Ph. 262-4111, leave message.

FREE: black Labrador puppy 6 months old, to good home only. Ph. 254-2737.

FREE: 5 female kittens, 7 weeks old to good home. Phone 536-6769

FREE CHRISTMAS PUPPY... smallish 20 lb. friendly, female part Fox Terrier, 8 mos. old, to good home. Ph. 638-8198

VACUUM CLEANERS

w/ guarantee, \$24.95 & up. Call 436-4211, 955-8854.

ORGAN/Kimbaal Fun Machine

reduced from \$995 to \$700; beginner guitar w/case \$50; movie camera (Yashika) projector, light \$125 or offer; Miracle Maid cookware \$95; Childcraft set \$75; Children's bible story \$50. 261-6808 or 261-2772

GIFTS - imported crafts & fabrics; sewing machine; women's clothing, misc.

262-0433

CON-STAN Industries presents:

Proper Skin Care with 100% PURE ORGANIC Products. For your appointment call 261-5324 or 395-2806

LOVABLE, Huggable, unforgettable pair, RAGGEDY ANN/ANDY DOLLS.

Each with a heart and made with love. On sale now with other Calico Friends at Country Charm Creations. 912 Kalipi St., Kailua.

ANTIQUE weigh yourself scale.

\$500. Stereo and console \$400. Ph. 261-2981.

CRIB, \$50, folding high chair, \$25, both excl. cond.

623-8094 after 4 p.m.

FREE PICKUP'S CASH \$ for good used furniture

Rattan, wicker & beds

261-8492 or 247-1937

GETTING Married? Ladies diamond engagement set, containing one .56 ct. diamond plus 5 small diamonds appraised at \$3,539, needs cash. list \$1400. Also diamond bracelet cheap. Private party 239-5054.

ATARI for sale, with cartridges.

Call 261-8471.

SONY SL3000 portable VCR

w/ timer/ timer and VHS 2000 color camera + AC adapter, car cord. \$950. Hardly used. Ph. 261-4462

RCA VET 650 VCR with remote control, excl. cond., \$500.

Ph. 261-4462.

RUGS, 10 x 14, \$100; 12 x 15, \$110; 12 x 18, \$120; 15 x 18, \$130.

Call 395-5479.

ATARI Video System, 19 cartridges, like new, value - \$750 plus, sell \$495/offer.

Phone 623-3904. Christmas Bargain.

NEW Toilet bowls, still in shipping crate.

White, \$30 ea./offer. Ph. 261-8497.

ATARI VCS, \$95 w/ various cartridges at \$15 each.

Ph 261-6369.

ANTIQUE Cast Iron Bathrub.

Ideal for animal baths, plants or collector's item. \$75 or best offer. 896-3928.

FOLDING roll-a-way bed, like new, \$100/offer.

Ph. 623-5510, days; 623-3503, evens.

FOR SALE: 15" color TV, excl. cond. \$195.

Call 261-235-5881 or 239-7758 after 8:30

GAS Stove, 4 burner apt. size, \$50; electric typewriter Royal 680.

\$60. 538-9134

RECONDITIONED Coldspot

refrig. front free. \$50, port. elec. oven, \$25 Ph. 261-1191.

HEAVY Duty Kenmore large capacity dryer \$150;

deluxe Lady Kenmore \$300 or best offer. Call 833-2669

PORTABLE washer & dryer,

deluxe Lady Kenmore \$300 or best offer. Call 833-2669

127 APPLIANCES

FOR Sale, Whirlpool, no frost, upright, one door freezer, 12 cu ft \$150. 262-5347 after 7:00 evens

APT. Size portable washer, great condition, harvest gold. \$200. 456-5553.

SEARS Kenmore oven, used, needs cleaning. \$20. Call 261-8497.

G.E. washer & dryer, excl. cond. \$300. Call 456-3543

APPLIANCES: Gas stove w/dishwasher, compactor, washer, gas dryer, 2 refrigerators; heat pump; copying machine; misc. items, all in good cond. Sat. 9-5 p.m., 8307 Kapapaia Pl., Hawaii Kai

6' XMAS Tree w/trim, \$200;

Antique sew. machine, \$350, Sultcase, \$10. Ph. 595-2475

CAPIZ Shell Lamps, high quality.

3-tier shell lamps, great Xmas gifts, military discount avail. Call before Sat. 623-6688

YASHICA 35mm camera, TL-electro 135mm lens 2X converter, flash, Bell & HAF-70 slide projector.

\$350. 239-6255.

129 TV'S. STEREO'S

ACA Video cass. recorder. VCT400 2/4 hr. excl. cond. \$375/offer. 239-6255

ANTIQUE Barrel-top desk, 120 years old, Victorian era, excellent condition, very large storage drawers.

Must see to appreciate, \$1000 offer. Ph. 237-8030 evens.

ANTIQUE Weigh yourself scale, \$500, stereo & console \$400.

Ph. 261-2981.

121 WIKI WIKI FREEBEE

FREE Kittens & cats, many to choose from Healthy good mousers, kittens are darling! Pukukea Kitty Farm. 638-8198.

FREE: Xmas kittens available now. Beautiful markings.

Val 395-8673.

FREE to good home w/yard, 1 yr. old Beagle mix male, all shots, very playful.

Ph. 737-7779.

FREE: loving, healthy tortoise shell kitly, abandoned by owner who moved, all shots.

262-0817.

FREE TO HURRICANE IWA STORM VICTIMS: Couch, sofa, settee.

Ph. 235-5240.

FREE: Shepherd/mix. 1 yr. female, white, spayed, shots, obedience.

Ph. 696-3442 evens.

FREE: 2 German Shepherd/Collie mix, 1 1/2 old, well trained.

Ph. 262-4111, leave message.

FREE: black Labrador puppy 6 months old, to good home only.

Ph. 254-2737.

FREE: 5 female kittens, 7 weeks old to good home.

Phone 536-6769

FREE CHRISTMAS PUPPY... smallish 20 lb. friendly, female part Fox Terrier, 8 mos. old, to good home.

Ph. 638-8198

136 MISCELLANEOUS WANTED

KAMA'AINA USED FURNITURE

Now buying all types of furniture. Top cash. 488-1985

WANTED: Coconut palms, and Singapore plumerias. Call 677-0702.

WANTED: 24" boys bike 18" or 18" 2 wheeler w/training wheels.

Call 235-2411

COMIC Books, new & old wanted.

Highest prices paid. Call 677-3348.

CASH for Lawn Mowers & Outdoor Motors.

Any Condition. Ph. 259-5927

WE BUY used furniture. We pay cash and pickup.

Call 261-8492 or 247-1937.

WANTED: Modular living rm, group beige or brown; 25" color TV, bar stools, picnic table; pool furniture.

Ask for Robin at 235-5881 or 239-7758, after 6:30.

140 PHOTO SUPPLIES

CANON A-1 Quilt, \$1000/offer. Call Vic 247-4394, evens and weekends.

NEW Sliding glass door, panel & frame, complete 82"x80".

\$75. 235-0534

144 MUSIC SALES AND SERVICE

66 FENDER Telecaster guitar \$300. Sears amp & rhythm box. \$150. Call 261-8922

GIBSON G-3 Bass guitar, asking \$325.

Toshiba belt turntable SR230 \$80. 696-8104.

YAMAHA Organ, almost new, sacrifice, \$2000/offer.

Ph. 487-5997 evens.

146 BOATS SUPPLIES & SERV.

17' MCKEE Craft with seats & console. Merc 65. Trailer. All rebuilt. Ready to go. \$4500. Call 235-6614.

14' GLASSPAR w/trailer, 40hp Johnson motor. \$1800 or best offer. Call 259-5537 after 4:30 p.m.

CHRISTMAS GIFTS FOR YOUR FAVORITE YACHTSMAN

Ibberson Yachtman Kalia Boat's Chairs Signal Instruments Sail Repair Kits

ART NELSON SAILMAKER, INC.

837-9658, 262-8236, 262-6854

147 SPORTING GOODS

RIFLES, Pistols, shotguns 22, 303, 243, 308, 3006, 7mm mag., .357, 20 & 12 GA. like new 734-8222 after 6 p.m.

LYNX Tigriss Elegance ladies

golf clubs, woods & irons, brand new w/bag, \$350. Ph. 833-2439.

1937 9mm GERMAN Luger,

excellent except some spotting on right side. \$475. 423-1203 after 7 p.m.

POOL table, 4' x 9' slate bed,

accessories w/cue rack, \$450. Ph. 455-5024.

151 PET SUPPLIES SALES & SERVICE

BABY Dwarf bunnies pedigree 5 generations, in house raised w/TLC. Please call 423-1224 from 3:30-7:30 p.m.

PAIR of Plumhead, 2 pairs Lineolard Parakeets.

Call 262-6096

2 FEMALE Geese, both for \$25.

Call 261-7723

HALF Chihuahua half toy fox terrier male pup, \$65.

Mother \$35. 623-2156

COCKATIELS, gentle handled,

will respond & deliver for Christmas. \$65-\$90. Ph. 247-0066.

GAGE-sturdy well reinforced w/screen, 5 1/2 ft. square 3 ft. high, opening for entry, in Kailua-you pick up, \$25.

948-1787 evens.

PITBULL purebred puppy for sale, male \$75.

Call 262-2980

GOOD home for two Yorkshire Terriers.

Call 926-5827.

CHRISTMAS Special! Seal-point Siamese kittens.

Call 254-1263 after 12 noon.

ilio Hawaii's Dog Newspaper

available at Pet shops and by subscription 262-6677

AKC American Staffordshire puppies for sale.

Ph. 239-9120

HIMALAYAN Cats, Seal Pt. male & female, pet quality - show quality.

Ph. 499-2797

AKC POODLE Pups, 3 female, 1 white, 2 apricot, \$125 each.

Call 624-4368

PIT Bull pups for sale \$80 or offer.

Ask for Anna at 668-1084 or 423-1389.

AKC white male poodle, for stud.

Call 622-1831.

156 AUTO PARTS & SERVICE

CONVERSION kit for '74 Datsun pickup, front end w/trailer case \$900 or offer. 259-7142.

161 AUTOS WANTED

DESPERATE WE NEED YOUR CAR

PAID FOR OR IMMEDIATELY! TOP DOLLAR GIVEN at WHOLESALE MOTORS 2090 N. Nimitz Hwy. 836-1222

171 MOTORCYCLES SALES & SERVICE

76 JAWA CZ125, never used, stored in preserved since new. \$900 or offer. 254-5319

78 HONDA 750-four, excellent condition, many extras.

\$1500 or best offer. Ph. 422-5370.

164 TRAILERS

CARGO Tandem Trailer, water light aluminum and seal, factory made on mainland, 12 long, 6 wide, 6 high, 9000 lbs. gross, hitch & mirrors, 695-5733

178 DATSUN PICKUP

4 spd., radio, (HGN575) \$3475

WHOLESALE MOTORS 836-1222 999 N. Nimitz Hwy

CLASSIC '64 Datsun Pick-up,

completely rebuilt, custom wheels, roll bar, moon roof. Steel at \$425. 524-5822 or 235-5435, Rob.

80 TOYOTA 3/4 ton longbed

pickup w/black plastic bed guard, now white paint & tires. Chrome bumper & hubs. AM/FM cassette, 24,000 mi. \$5500. 235-8292, Russ.

73 TOYOTA Pick-up truck,

67,000 miles, good cond. auto., \$1500/offer. Ph. 262-4955.

70 FORD Ranchero, needs

some body and engine work. \$300. 247-4318

70 TOYOTA Pickup,

4 spd. AE0591 \$995 Car City 833-3017

'75 YAMAHA RD200

Low mileage, excellent condition, perfect for transportation. \$200 or Best Offer Call 487-1432 after 5 p.m.

D&J's Auto Surgery

1711 SILVA STREET

Major Collision Repair - Insurance Work

Quality Paint & Body - Mechanical

Air Brush Work - Restorations

Guaranteed Work at Discount Prices

DAN WIGHTMAN - JOE SANTARONE, Owners

847-5212

MICHELIN MOTORCYCLES

ON SALE NOW

Free Installation Full Written Warranty

SANDY BRODIE'S 94-169 Farrington Highway Tel. (808) 671-2691

Volvo, Fiat, Jaguar, MG, Triumph, Alfa Romeo

JIM SLEMON IMPORT SERVICE SPECIALS

Automatic Transmission Service

Change trans. fluid. Change filter and adjust as necessary. Plus road test.

All this for **\$35.00**

Reg. \$55.00.

73 + later VOLVOS & FIATS. With coupon only. Good till Dec. 31, 1982.

Alignment Special

VOLVOS and FIATS

VOLVOS **\$19.00** Reg. \$22.00

FIATS **\$28.00** Reg. \$40.00

73 + later VOLVOS and FIATS. With coupon only. Good till Dec. 31, 1982.

Labor Save Coupon 20% Discount

73 + later VOLVO, FIAT, JAG, MG, TRIUMPH. Not valid on advertised service specials. With coupon only. Good till Dec. 31, 1982.

171 MOTORCYCLES SALES & SERVICE

81 YAMAHA DT100 Enduro, on/off road. Never used. Holmet. \$650. Ph. 247-5982.

81 YAMAHA 250 Exciter, excl. condition, low mi., \$1200/offer. 455-4697.

81 HARLEY wide glide, low mi., excl. cond., custom air brush paint \$4300/offer. 261-2204

MOPED - good mechanical condition. \$200. Call 262-7589

BIG AL'S CUSTOM CYCLE PARTS

671-9584

94-147Q Lookane St. WAIPAHU

Our Prices Are Way Below Retail! Come See Us!

174 RENT A CAR

HAWAII Discount Rent A Car \$12 a day, \$47 a week, \$120 a mo., 12 to 15 seater vans, wagons. Collision waiver extra. Call 526-9100.

175 VANS, CAMPERS & JEEPS

BUYING or SELLING any JEEP? Call AUTO. HOTLINE 528-1111 now for free listing.

73 CHEVY Van, 3 spd., 8 cyl., \$2000 or best offer.

Call 235-6118 after 4 p.m.

77 CJ5, red/gold custom, tan

chrome fenders, Renegade, \$8250. Ph. 923-4939 ext. 208A

176 AUTOS FOR SALE

CARS sell for \$118.95 (average). Also Jeeps, Pickups. Available at local Gov't Auctions. For Directory call 805-687-6000 Ext. 2022. Call refundable.

AUDI

BUYING or SELLING any AUDI? Call AUTO. HOTLINE 528-1111 now for free listing.

BUICK

73 BUICK Century, runs well, body in good condition, new tires. Call after 3 p.m. 239-6967

CADILLAC

BY PRIVATE OWNERS '77 DE VILLE \$995 '65 EL DORADO Luxury \$895 526-3586

77 CHEVETTE, 2 dr., 4 spd. BRX573 \$995. Car City 833-3017

BY PRIVATE OWNERS '77 DE VILLE \$995 '65 EL DORADO Luxury \$895 526-3586

77 CHEVETTE, 2 dr., 4 spd. BRX573 \$995.

Car City 833-3017

77 CHEVY Van, 3 spd., 8 cyl., \$2000 or best offer.

Call 235-6118 after 4 p.m.

77 CJ5, red/gold custom, tan

chrome fenders, Renegade, \$8250. Ph. 923-4939 ext. 208A

176 AUTOS FOR SALE

CARS sell for \$118.95 (average). Also Jeeps, Pickups. Available at local Gov't Auctions. For Directory call 805-687-6000 Ext. 2022. Call refundable.

CLASSICS & ANTIQUES

1915 1-BUCKET Kit car, show case condition, \$8500 or best offer. Call 235-2566

DATSUN

BUYING or SELLING any DATSUN? Call AUTO. HOTLINE 528-1111 now for free listing

FIAT

'74 FIAT 124, AM/FM, 5 spd., \$2100. Call 521-8140, 373-9673

HONDA

BY PRIVATE OWNERS 74 HONDA CIVIC '695 76 CIVIC WAGON '1995 526-3586

MAZDA

'80 626 (AGJ619) 2 dr., auto., AM/FM, \$5975. WHOLESALE MOTORS

MG

BY PRIVATE OWNERS 67 MIDGET '795 77 MGB Clean \$2995 526-3586

TOYOTA

THIS IS IT!!! Our last auto auction of the year-1982- and EVERYTHING must go. Low prices on cars reduced even further...

TOYOTA

'77 COROLLA, 4 dr., 4 spd., B1275. Car City 833-3017

VOLKSWAGEN

'78 CONVERTIBLE Volks Bug, low mileage, BCU597 \$5495. Car City 833-3017

DATSUN

THIS IS IT!!! Our last auto auction of the year-1982- and EVERYTHING must go. Low prices on cars reduced even further...

DODGE

'64 DODGE 4 dr. Polara, 318 engine, good running cond. Family transportation, \$3500/offer. 238-9878

FORD

75 PINTO, 2 dr., clean inside & out, \$750/best offer. Ph. 638-9134

HONDA

THIS IS IT!!! Our last auto auction of the year-1982- and EVERYTHING must go. Low prices on cars reduced even further...

MAZDA

ATTENTION! 1974 Mercedes 450SLC only 64,000 miles on this midnight blue, tan leather interior...

MG

72 OLDS Vista Cruiser, 9 passenger wagon, good cond. \$1200 or offer. 247-1439.

TOYOTA

'72 TOYOTA Corolla, 2 dr. wagon, 4 spd., low mileage, incl. mechanical cond. now tires, clutch, paint. 1 owner. \$1050. Ph. 395-2142

TOYOTA

THIS IS IT!!! Our last auto auction of the year-1982- and EVERYTHING must go. Low prices on cars reduced even further...

VOLKSWAGEN

BY PRIVATE OWNERS VW 75 RABBIT 2 dr. \$1295 71 BUG CONVERT. \$1950 80 VW SCIROCCO \$4995

All at PUBLIC AUTO AUCTION 777 S. King St. 526-9141

BY PRIVATE OWNERS 76 CUSTOM VAN \$2775 77 MONOCO \$1295 77 RAM CHARGER \$4695

BY PRIVATE OWNERS 75 GRANADA \$1295 69 MUSTANG Classic \$2295 65 MUSTANG \$2695

THIS IS IT!!! Our last auto auction of the year-1982- and EVERYTHING must go. Low prices on cars reduced even further...

SSINVESTORSSSSPECIALSS 1980 450SL. Excl. buy. By appointment only. \$33,000. Ask for David.

OLDSMOBILE 72 OLDS Vista Cruiser, 9 passenger wagon, good cond. \$1200 or offer. 247-1439.

BY PRIVATE OWNERS 70 CORONA economy \$495 78 CORONA clean \$1995 78 COROLLA \$1995

TRIUMPH BUYING or SELLING any TRIUMPH? Call AUTO. HOTLINE 528-1111 now for free listing.

VOLVO BUYING or SELLING any VOLVO? Call AUTO. HOTLINE 528-1111 now for free listing.

'75 DATSUN 210 \$475 DATSUN OF WAHIAWA 621-0761

BUYING OR SELLING any DODGE? Call AUTO. HOTLINE 528-1111 now for free listing.

BY PRIVATE OWNERS 77 LTD 4 dr., a/c \$995 72 MUSTANG \$995 73 MUSTANG \$1295

All at PUBLIC AUTO AUCTION 777 S. King St. 526-9141

BUDGET CAR SALES 448 Kalewa St. 836-1707

PONTIAC BUYING or SELLING any PONTIAC? Call AUTO. HOTLINE 528-1111 now for free listing.

70 CORONA economy \$495 78 CORONA clean \$1995 78 COROLLA \$1995

All at PUBLIC AUTO AUCTION 777 S. King St. 526-9141

VOLVO 73 VOLVO Wagon, auto, excellent mechanical, low mileage, \$2995/offer. 947-6405

BY PRIVATE OWNERS 75 DATSUN B210 Economy \$1795 69 DATSUN 4 dr., 4 cyl. \$795

THIS IS IT!!! Our last auto auction of the year-1982- and EVERYTHING must go. Low prices on cars reduced even further...

74 GRAND TORINO \$595 78 FAIRMONT \$2395 78 FIESTA \$1995

ASK ABOUT OUR WARRANTY IT'S 80 MOS./80,000 MI. '83 MAZDAS PICKUPS, RX7s, GLCs FROM \$5499

MERCURY BUYING or SELLING any MERCURY? Call AUTO. HOTLINE 528-1111 now for free listing.

TOYOTA 70 TOYOTA, \$500. No problem over the Pass. Phone 262-8647

BY PRIVATE OWNERS 70 CORONA economy \$495 78 CORONA clean \$1995 78 COROLLA \$1995

All at PUBLIC AUTO AUCTION 777 S. King St. 526-9141

DOWN TOWN HONDA USED CARS WAIPAHU 677-9167

76 DATSUN 280Z Sharp \$4195 74 DATSUN 210 \$995 73 DATSUN 240Z \$2495

All at PUBLIC AUTO AUCTION 777 S. King St. 526-9141

78 FAIRMONT \$2395 78 FIESTA \$1995 526-3586

WHOLESALE MOTORS 838 1222 2999 N. Nimitz Hwy.

MERCURY BUYING or SELLING any MERCURY? Call AUTO. HOTLINE 528-1111 now for free listing.

TOYOTA 70 TOYOTA, \$500. No problem over the Pass. Phone 262-8647

BY PRIVATE OWNERS 70 CORONA economy \$495 78 CORONA clean \$1995 78 COROLLA \$1995

All at PUBLIC AUTO AUCTION 777 S. King St. 526-9141

DOWN TOWN HONDA USED CARS WAIPAHU 677-9167

75 DATSUN B210 \$1495 79 KING CAB PICKUP \$3395 526-3586

All at PUBLIC AUTO AUCTION 777 S. King St. 526-9141

74 GRAND TORINO \$595 78 FAIRMONT \$2395 78 FIESTA \$1995

WHOLESALE MOTORS 838 1222 2999 N. Nimitz Hwy.

MERCURY BUYING or SELLING any MERCURY? Call AUTO. HOTLINE 528-1111 now for free listing.

TOYOTA 70 TOYOTA, \$500. No problem over the Pass. Phone 262-8647

BY PRIVATE OWNERS 70 CORONA economy \$495 78 CORONA clean \$1995 78 COROLLA \$1995

All at PUBLIC AUTO AUCTION 777 S. King St. 526-9141

DOWN TOWN HONDA USED CARS WAIPAHU 677-9167

79 KING CAB PICKUP \$3395 526-3586

All at PUBLIC AUTO AUCTION 777 S. King St. 526-9141

74 GRAND TORINO \$595 78 FAIRMONT \$2395 78 FIESTA \$1995

WHOLESALE MOTORS 838 1222 2999 N. Nimitz Hwy.

MERCURY BUYING or SELLING any MERCURY? Call AUTO. HOTLINE 528-1111 now for free listing.

TOYOTA 70 TOYOTA, \$500. No problem over the Pass. Phone 262-8647

BY PRIVATE OWNERS 70 CORONA economy \$495 78 CORONA clean \$1995 78 COROLLA \$1995

All at PUBLIC AUTO AUCTION 777 S. King St. 526-9141

DOWN TOWN HONDA USED CARS WAIPAHU 677-9167

Place Your Order Now! For The DECEMBER Shipment. Order Early For BEST Selection

Going to OREGON to buy a new car or pickup? contact ROBERTS & REDFIELD PORTLAND

79 FORD Mustang, 4 cyl. auto., AM radio, \$3500. Ph. 474-5201 7:30-4 p.m. Earl.

WHOLESALE MOTORS 838 1222 2999 N. Nimitz Hwy.

MERCURY BUYING or SELLING any MERCURY? Call AUTO. HOTLINE 528-1111 now for free listing.

TOYOTA 70 TOYOTA, \$500. No problem over the Pass. Phone 262-8647

BY PRIVATE OWNERS 70 CORONA economy \$495 78 CORONA clean \$1995 78 COROLLA \$1995

All at PUBLIC AUTO AUCTION 777 S. King St. 526-9141

DOWN TOWN HONDA USED CARS WAIPAHU 677-9167

VOLVO HAWAII 487-7974 98-075 KAM HWY. '78 ALFA SPIDER Red, 5 spd., stereo, P722

Going to OREGON to buy a new car or pickup? contact ROBERTS & REDFIELD PORTLAND

79 FORD Mustang, 4 cyl. auto., AM radio, \$3500. Ph. 474-5201 7:30-4 p.m. Earl.

WHOLESALE MOTORS 838 1222 2999 N. Nimitz Hwy.

MERCURY BUYING or SELLING any MERCURY? Call AUTO. HOTLINE 528-1111 now for free listing.

TOYOTA 70 TOYOTA, \$500. No problem over the Pass. Phone 262-8647

BY PRIVATE OWNERS 70 CORONA economy \$495 78 CORONA clean \$1995 78 COROLLA \$1995

All at PUBLIC AUTO AUCTION 777 S. King St. 526-9141

DOWN TOWN HONDA USED CARS WAIPAHU 677-9167

'69 BMW 2002 Tini, sunroof, U654 \$1895 '68 ROADSTER 4 spd., 53000 original miles, sharp, P196

Going to OREGON to buy a new car or pickup? contact ROBERTS & REDFIELD PORTLAND

79 FORD Mustang, 4 cyl. auto., AM radio, \$3500. Ph. 474-5201 7:30-4 p.m. Earl.

WHOLESALE MOTORS 838 1222 2999 N. Nimitz Hwy.

MERCURY BUYING or SELLING any MERCURY? Call AUTO. HOTLINE 528-1111 now for free listing.

TOYOTA 70 TOYOTA, \$500. No problem over the Pass. Phone 262-8647

BY PRIVATE OWNERS 70 CORONA economy \$495 78 CORONA clean \$1995 78 COROLLA \$1995

All at PUBLIC AUTO AUCTION 777 S. King St. 526-9141

DOWN TOWN HONDA USED CARS WAIPAHU 677-9167

'70 JAGUAR XKE 2-2 New paint, interior, and tires, P506 '54 MG TF Blue, show cond., U589

Going to OREGON to buy a new car or pickup? contact ROBERTS & REDFIELD PORTLAND

79 FORD Mustang, 4 cyl. auto., AM radio, \$3500. Ph. 474-5201 7:30-4 p.m. Earl.

WHOLESALE MOTORS 838 1222 2999 N. Nimitz Hwy.

MERCURY BUYING or SELLING any MERCURY? Call AUTO. HOTLINE 528-1111 now for free listing.

TOYOTA 70 TOYOTA, \$500. No problem over the Pass. Phone 262-8647

BY PRIVATE OWNERS 70 CORONA economy \$495 78 CORONA clean \$1995 78 COROLLA \$1995

All at PUBLIC AUTO AUCTION 777 S. King St. 526-9141

DOWN TOWN HONDA USED CARS WAIPAHU 677-9167

'75 DATSUN B210 Tini, sunroof, U654 \$1895 '68 ROADSTER 4 spd., 53000 original miles, sharp, P196

Going to OREGON to buy a new car or pickup? contact ROBERTS & REDFIELD PORTLAND

79 FORD Mustang, 4 cyl. auto., AM radio, \$3500. Ph. 474-5201 7:30-4 p.m. Earl.

WHOLESALE MOTORS 838 1222 2999 N. Nimitz Hwy.

MERCURY BUYING or SELLING any MERCURY? Call AUTO. HOTLINE 528-1111 now for free listing.

TOYOTA 70 TOYOTA, \$500. No problem over the Pass. Phone 262-8647

BY PRIVATE OWNERS 70 CORONA economy \$495 78 CORONA clean \$1995 78 COROLLA \$1995

All at PUBLIC AUTO AUCTION 777 S. King St. 526-9141

DOWN TOWN HONDA USED CARS WAIPAHU 677-9167

'70 JAGUAR XKE 2-2 New paint, interior, and tires, P506 '54 MG TF Blue, show cond., U589

Going to OREGON to buy a new car or pickup? contact ROBERTS & REDFIELD PORTLAND

79 FORD Mustang, 4 cyl. auto., AM radio, \$3500. Ph. 474-5201 7:30-4 p.m. Earl.

WHOLESALE MOTORS 838 1222 2999 N. Nimitz Hwy.

MERCURY BUYING or SELLING any MERCURY? Call AUTO. HOTLINE 528-1111 now for free listing.

TOYOTA 70 TOYOTA, \$500. No problem over the Pass. Phone 262-8647

BY PRIVATE OWNERS 70 CORONA economy \$495 78 CORONA clean \$1995 78 COROLLA \$1995

All at PUBLIC AUTO AUCTION 777 S. King St. 526-9141

DOWN TOWN HONDA USED CARS WAIPAHU 677-9167

'75 DATSUN B210 Tini, sunroof, U654 \$1895 '68 ROADSTER 4 spd., 53000 original miles, sharp, P196

Going to OREGON to buy a new car or pickup? contact ROBERTS & REDFIELD PORTLAND

79 FORD Mustang, 4 cyl. auto., AM radio, \$3500. Ph. 474-5201 7:30-4 p.m. Earl.

WHOLESALE MOTORS 838 1222 2999 N. Nimitz Hwy.

MERCURY BUYING or SELLING any MERCURY? Call AUTO. HOTLINE 528-1111 now for free listing.

TOYOTA 70 TOYOTA, \$500. No problem over the Pass. Phone 262-8647

BY PRIVATE OWNERS 70 CORONA economy \$495 78 CORONA clean \$1995 78 COROLLA \$1995

All at PUBLIC AUTO AUCTION 777 S. King St. 526-9141

DOWN TOWN HONDA USED CARS WAIPAHU 677-9167

'70 JAGUAR XKE 2-2 New paint, interior, and tires, P506 '54 MG TF Blue, show cond., U589

Going to OREGON to buy a new car or pickup? contact ROBERTS & REDFIELD PORTLAND

79 FORD Mustang, 4 cyl. auto., AM radio, \$3500. Ph. 474-5201 7:30-4 p.m. Earl.

WHOLESALE MOTORS 838 1222 2999 N. Nimitz Hwy.

MERCURY BUYING or SELLING any MERCURY? Call AUTO. HOTLINE 528-1111 now for free listing.

TOYOTA 70 TOYOTA, \$500. No problem over the Pass. Phone 262-8647

BY PRIVATE OWNERS 70 CORONA economy \$495 78 CORONA clean \$1995 78 COROLLA \$1995

All at PUBLIC AUTO AUCTION 777 S. King St. 526-9141

DOWN TOWN HONDA USED CARS WAIPAHU 677-9167

'75 DATSUN B210 Tini, sunroof, U654 \$1895 '68 ROADSTER 4 spd., 53000 original miles, sharp, P196

Going to OREGON to buy a new car or pickup? contact ROBERTS & REDFIELD PORTLAND

79 FORD Mustang, 4 cyl. auto., AM radio, \$3500. Ph. 474-5201 7:30-4 p.m. Earl.

WHOLESALE MOTORS 838 1222 2999 N. Nimitz Hwy.

MERCURY BUYING or SELLING any MERCURY? Call AUTO. HOTLINE 528-1111 now for free listing.

TOYOTA 70 TOYOTA, \$500. No problem over the Pass. Phone 262-8647

BY PRIVATE OWNERS 70 CORONA economy \$495 78 CORONA clean \$1995 78 COROLLA \$1995

All at PUBLIC AUTO AUCTION 777 S. King St. 526-9141

DOWN TOWN HONDA USED CARS WAIPAHU 677-9167

'70 JAGUAR XKE 2-2 New paint, interior, and tires, P506 '54 MG TF Blue, show cond., U589

Going to OREGON to buy a new car or pickup? contact ROBERTS & REDFIELD PORTLAND

79 FORD Mustang, 4 cyl. auto., AM radio, \$3500. Ph. 474-5201 7:30-4 p.m. Earl.

WHOLESALE MOTORS 838 1222 2999 N. Nimitz Hwy.

MERCURY BUYING or SELLING any MERCURY? Call AUTO. HOTLINE 528-1111 now for free listing.

TOYOTA 70 TOYOTA, \$500. No problem over the Pass. Phone 262-8647

BY PRIVATE OWNERS 70 CORONA economy \$495 78 CORONA clean \$1995 78 COROLLA \$1995

All at PUBLIC AUTO AUCTION 777 S. King St. 526-9141

DOWN TOWN HONDA USED CARS WAIPAHU 677-9167

ARE YOU SELLING YOUR CAR? We Can Sell It For You

OUR FEE: 10% ONLY IF SOLO ABSOLUTELY NO CHARGE IF NOT SOLD

79 FORD Mustang, 4 cyl. auto., AM radio, \$3500. Ph. 474-5201 7:30-4 p.m. Earl.

WHOLESALE MOTORS 838 1222 2999 N. Nimitz Hwy.

MERCURY BUYING or SELLING any MERCURY? Call AUTO. HOTLINE 528-1111 now for free listing.

TOYOTA 70 TOYOTA, \$500. No problem over the Pass. Phone 262-8647

BY PRIVATE OWNERS 70 CORONA economy \$495 78 CORONA clean \$1995 78 COROLLA \$1995

All at PUBLIC AUTO AUCTION 777 S. King St. 526-9141

DOWN TOWN HONDA USED CARS WAIPAHU 677-9167

DOOR BUSTER SPECIALS. 75 DATSUN B210 \$995, 73 CHEVY WGN \$995, 67 MERCURY MONCLAIR \$995, 74 VW DASHER \$1495, 75 DODGE DART \$1695, 79 FIESTA \$1995, 78 GLC \$1995, 74 CELICA \$1995, 76 COROLLA \$1995, 76 DODGE DART \$1995.

WAIPAHU'S SHELLY MAZDA. 94-212 Leoku St., Waipahu 677-0761. We're Looking for People Who Need GOOD USED CARS!

GREAT RATE! 10.9% ANNUAL PERCENTAGE RATE. ON NEW 1982 CHEVY CARS & LIGHT TRUCKS* FINANCE SAVINGS UP TO \$2395**

WINDWARD TOYOTA. Prices Good thru Dec. 21, 1982. Subject To Prior Sale. PH. 235-0068 OPEN 7 DAYS A WEEK

WAIPAHU AUTO SERVICE MOTORS. 94-729 Farrington Hwy. PH: 671-2871. 105 Kam Hwy PH: 622-4195

Paradise Pastime

WITHIN THE GATES — Armed Services YMCA Outreach, located in Bldg. 455 (near the 7-Day Store) will hold its Annual Christmas Party Dec. 22, from 9-11 a.m.

Parents and children are both invited. Parents are asked to bring a low priced wrapped gift (with name) for their children and Santa Claus will present it to them. Everyone is also asked to bring her favorite pupu for potluck refreshments. For information or reservations call Armed Services YMCA Outreach at 254-1719 or 254-4965 by Dec. 17.

BEYOND THE GATES — "Fully Alive Families," a workshop to enhance family interaction and communication, which will be conducted by Rev. John Powell, S.J., the founder of the "Fully Alive Experience" will be offered to the public.

The three-hour workshop, in conjunction with the university's Office of Accelerated Programs and Special Sessions, are open to families, including single-parent families with adolescent children of any religious affiliation, will be held on Maui at the St. Anthony Church on Jan. 4, 5, 6, 1982, and on Oahu at the CUH campus on Jan. 6, 7, 8, 1983.

Father Powell, the author of eight books dealing with God and relationships, and a faculty member of Loyola University of Chicago, will be accompanied by Loretta Brady, M.A., M.S.W., a family and marriage therapist who is affiliated with the Family Institute of Chicago.

The \$50 fee per family unit for the workshop, which will be held from 7 to 10 p.m. will include all materials.

To register, or for more information, call the Office of Accelerated Programs and Special Services at 735-4755 or 735-4791.

A special Christmas Interim term from Dec. 22 to Jan. 5, 1983 will be offered to the public by the Office of Accelerated Programs and Special Session of Chamaine University of Honolulu.

The four-hour intensive classes which will be offered at Schofield Barracks, Tripler Army Medical Center, Fort Shafter, Pearl Harbor, Naval Station and on the CUH campus, will be conducted by CUH faculty.

Lower division and upper division level courses in business, psychology, political science and religion which are offered, can be audited or taken for credit towards a degree.

For a complete class schedule and registration information, contact the Office of Accelerated Programs and Special Session at 735-4755, 735-4766 or 735-4791.

Paradise Park is pleased to announce the opening of Santa's Workshop to be held at beautiful Paradise Park. The workshop has been designed for keikis kindergarten through 4th grade.

A fun filled week is in store for them making each day Christmas.

All the fun starts December 20 — 24, 1982 from 8 a.m. to 4:30 p.m.

The schedule for Santa's Workshop is as follows:

MONDAY December 20 — Santa's Workshop, Aquatic Carnival, Tour, Hawaiian Workshop and Films.

TUESDAY December 21 — Santa's Workshop, Tour, Bird Show, Feathered Friends and Games.

WEDNESDAY December 22 — Santa's Workshop, Tour, Christmas Songs and Games.

THURSDAY December 23 — Santa's Workshop, Songs and Games, Tour and Cookie Decoration.

FRIDAY December 24 — Santa's Workshop, Games, Caroling and CHRISTMAS PARTY!!!

Santa's Workshop will include arts and crafts, making Christmas ornaments, creative play, story time and lots of fun-filled activities. Santa's Workshop will keep the kids entertained for the entire Christmas vacation. The cost per child for the entire week is \$35 or \$8 per child on a daily basis. Lots of snacks and a hot lunch is included in the price. Come up to Paradise Park and leave the kids at the exciting Santa's Workshop. Phone Lee-Ann Forias for applications and information. Deadline for registration is December 17, 1982.

The Polynesian Cultural Center in Laie will be closed on Christmas and New Year's Days, but will offer a full program of activities — including its "Invitation to Paradise" evening show — on both Christmas and New Year's Eves.

"In fact, if necessary because the holiday season is a busy time in Hawaii, we'll offer two shows on those evenings to accommodate visitors," said William H. Cravens, Vice President and General Manager of the Polynesian Cultural Center.

It is recommended visitors make reservations for the evening show by calling 293-3333.

The Polynesian Cultural Center — a non-profit activity of The Church of Jesus Christ of Latter-day Saints (The Mormons) — is regularly open Mondays through Saturdays from 10 a.m. (closed Sundays).

"HAWAII: THE ROYAL ISLES", opens December 19, 1982 and runs through August 31, 1983.

A major new exhibit that explores the last two centuries of changing Hawaiian traditions through an exciting and colorful collection of Hawaiian artifacts and other historical objects.

The more than 300 objects — most not publicly displayed for years — include paintings and engravings dating back to earliest Western contact; traditional Hawaiian religious images and missionary materials; calabashes; kupa; hula implements; featherwork; monarchy portraits and other royal trappings; and contemporary works based on traditional Hawaiian culture.

The exhibit recently returned from a two-year national tour of seven major museums, during which nearly 250,000 people enjoyed it.

Hours and admissions: main galleries open 9 a.m. to 5 p.m. daily except Christmas Day. Admission includes all public areas except for the Planetarium: Adults, \$4; Youths (6-17), \$2; Children under 6, when accompanied by an adult, free. Beginning January 1, 1983, — A flat rate for all public areas including the Planetarium: Adults, \$4.75; Youths, \$2.50. FAMILY NIGHTS (second Friday and fourth

Wednesday of each month, 6-9 p.m.): Families of up to six immediate members admitted for \$2 (including the Planetarium).

A Christmas in Hawaii — A musical extravaganza, will be presented in the Castle High School auditorium Dec. 19, 20 and 21 at 7 p.m. The program, sponsored by the Castle Memorial Hospital Auxiliary, will tell the story

of Christ's birth in an Hawaiian setting, featuring an orchestra and more than 40 in the cast.

Proceeds will be used to purchase life-saving diagnostic equipment for Castle Hospital. Tickets are \$5 and are available at the Castle Hospital Gift Shop, all Sears, Mescalitos and Playdys.

Wise up.

Get the degree you've always wanted. See your career planner and ask about the Corps' educational programs.

Stay Marine



CAMOUFLAGE SHOP

CHRISTMAS SPECIALS:

Camouflage T-Shirts & Tank Tops Reg. 7.99 \$6.40	Emblem T-Shirts Reg. 7.25 \$5.75
Camouflage Shirts Various Styles Reg. 12.95-14.98 \$9.95-\$11.95	Sanya Digital Quartz Watches Men's Reg. 34.95 \$19.95 Women's Reg. 39.95 \$25.95

76 Wilikina Dr. — 622-5538
 Mon.-Fri. 10:30-7/Sat. 10-5/Sun. 11-4

SCHEDULED AIRLINES TICKET OFFICE (SATO)

Staffed by full time Airline personnel To assist in your travel requirements

- Individual leave
- Family travel to the Mainland
- Neighbor Island
- International
- Dependent travel to West-PAC
- Fares
- Flight Information

Contact SATO for reservations and airline tickets at any one of our three convenient on base locations

- Pearl Harbor** - Bldg 487 - Tele. 422-0571
 Office hours - Mon thru Fri. 0730-1600
- Camp Smith** - Bldg. 2D - Tele. 487-1567
 Office hours - Mon. thru Fri. 0800-1600
- Kaneohe MCAS** - Bldg. 209 - Tele. 254-1564
 Office hours - Mon. thru Fri. 0730-1530

ALA MOANA

HAWAII'S CENTER

CHOO! CHOO! NEW!

All aboard!
 Santa's Jingle Bell Express,
 has delivered the
 greatest array of Christmas gifts ever.
 Every shop is sugar plum full.
 And Santa's showing off all the
 wonders of Santaland with
 train rides 'round our giant Christmas tree.

Shop for Joy! Every day 'til 10 p.m.