

HAWAII MARINE



White letter Commandant emphasizes chain of command usage

During my first year as Commandant of the Marine Corps, I was struck by the number of Marines who felt that they needed to go outside the chain of command to resolve a personal problem. In fact, too many cases per research indicated that the problem could have been solved within the chain of command by Marines in positions of leadership and responsibility.

While I was addressing my deep concern over this subject at Headquarters, Marine Corps, a White Letter from Gen. Wallace M. Green Jr. was brought to my attention:

"Since the founding of our Corps, continued success in war and peace has made the name Marine synonymous with soldierly virtue, military proficiency and professional pride. This legacy, passed on through generations of Marines, has been built on the cornerstones of camaraderie, discipline and esprit de corps.

Every Marine, from his first days in the Corps, is thoroughly indoctrinated in a way of life in which Marines take care of their own; one where each Marine may have complete reliance on his fellow Marine no matter the circumstance. One of the means of instilling this camaraderie and trust is to insure the opportunity to all Marines to express constructive criticism, grievances, and recommendations via the existing military chain of command, further to see that its availability is understood and exploited.

Discipline is not simply unhesitating obedience to orders. Certainly, in the combat environment, response must be swift, sure and predictable. However, this requirement is not in conflict with suitable consideration of innovative recommendations prior to action, nor of professional criticism and review after. All Marines have both opportunity and responsibility to contribute to our administration, techniques and procedures. This is especially true with respect to matters which bear on the daily life, safety, and effectiveness of Marines. In part, it is through this process that we progressively improve. This rational dialogue is most useful and effective when it is conducted within the organizational structure.

Recently, there appears to be a growing tendency for some Marines to bypass the chain of command, which could be resolved by internal communication. This tendency, by its nature, does not mean to disrespect the chain of command, but it does mean to bypass the chain of command. This is a serious matter and one which must be corrected. It is the responsibility of all Marines to communicate with their superiors and to accept the decisions of their superiors. This is the only way to maintain the chain of command and to ensure the effectiveness of the Marine Corps.



The ceremonial Marines who dramatized the two Jima flag raising stand silhouetted against the sunset during the evening parade at Pearl Harbor.

Island Marines celebrate Corps' 209th Birthday

Sunset parade at Pearl Harbor

by Sgt. Chuck Jenks
Marine Barracks, Pearl Harbor — The Annual Sunset Parade and historical uniform pageant held at Pearl Harbor, Nov. 8, dramatized the pride, tradition and professionalism which the Corps has held since Nov. 10, 1775.

At 5:40 p.m., three bells sounded the beginning of the 45-minute parade. Platoons of Leathernecks from Marine Barracks marched onto the parade field brandishing spotless M-14 ceremonial rifles and each platoon commander had a Mameluke sword. With musical accompaniment by the FMFPac Band, the pageant started.

Marines garbed in historical uniforms marched into the center spotlight. Each pausing as an excerpt from that particular part of Marine Corps history was read.

Following the pageant, the FMFPac Saluting Battery fired a 21-gun salute with their four Pack 75mm Howitzers.

"We must remember on this, our birthday," said LtGen. C. G. Cooper, CG, FMFPac, "that there are 364 other days of the year when we must continue to

celebrate and reflect on the past of our Corps. Today's Corps is stronger, smarter, more flexible and as well-equipped a fighting force as it

has ever been in the past. Remember, we are the Marines!"

Cont. on A-4



LtCpl. Brian D. Rood receives a piece of Marine Corps birthday cake from BGen. O.K. Steele, Commanding General of the 1st Marine Brigade, for being the youngest Marine. The oldest Marine, MGySgt. Marden R. Durkee, waits for his piece of cake.

MCAS ceremony

Marine Corps birthday celebrations may have been a day early this year, but they couldn't have been any sooner for PFCs Mario Drake and Todd Johnson of HMH-463.

Both Marines were promoted to their present rank by BGen. O.K. Steele, Commanding General, 1st Marine Brigade, during ceremonies at Pop Warner Field, Friday. The promotions followed a tradition started by BGen. Steele, who last year promoted Pvt. Lamar Smith to PFC during a similar ceremony.

This year's festivities marking the Corps' 209th birthday were witnessed by approximately 3,000 Marines, sailors and their families and friends. Featured were the FMFPac Band, a pageant of historical Marine uniforms, Brigade and Station color guards displaying national and organizational colors, an honor guard and a cake escort.

A cake-cutting ceremony was held and the first pieces were presented to the oldest and youngest Marines to signify past and future accomplishments, and as a symbolic "passing of the torch" from one Marine generation to another.

Cont. on A-4

Kick the habit for one day!!

The Great American Smokeout, sponsored by the American Cancer Society, is happening today.

It's a day for all smokers, those who know they want to quit and those who are just thinking of quitting, to try to stop for 24 hours.

The purpose of the Smokeout is to dramatize the concern of local health agencies for the critical link between smoking and diseases such as lung cancer, emphysema and heart disease.

It's also to inform smokers of support they can get from agencies and individuals on ways to quit. Getting at least one in every five smokers to quit during this 24-hour period is American Cancer Society's goal.

"Adopt a smoker and save a friend" is the theme for this year's Eighth Annual Smokeout. Nonsmokers are urged to "adopt" a smoker friend who will agree to try to quit for the 24-hour period. They should provide them with sympathy, understanding and encouragement. The society offers these tips for adopters:

Show that you care and have a vested interest in keeping the adoptee happy; provide them with a survival kit of low calorie nibbles; don't nag or threaten; try to make yourself available for the entire day; take them out for breakfast or lunch; and consider giving up something for the day also.

If you're an ex-smoker, share your experiences rather than lecture on the dangers of smoking. What worked for you may work for others.

Schedule an evening activity that minimizes the temptation to smoke. See a movie or have a get-together with fellow adopters and their adoptees.

Offer praise, encouragement, and finally, at the end of the day, congratulations. Urge them to stay off cigarettes now that they've made it for a day.

For more information on the Smokeout call 531-1662. Smoker adoption form on A-8

Next week's Hawaii Marine will be published on Wednesday due to Thanksgiving holiday

What's inside



BSSG hits the beach A-5

Field medicine makes a comeback A-6

Save a smoker's life A-8

A taste of Hawaii A-10

Big Bird bath A-13

WM's beginning B-1

Birthday runners B-1



Flag football champions B-5

Weekly items

- At a glance A-10
- Salutes A-14
- Religious services B-2
- Sports shorts B2
- Island Happenings B-4
- Special Services B-7
- Movies B-7

Harrier contract

St. Louis, Mo. — The U.S. Navy has awarded a \$2.1 million design definition contract to McDonnell Douglas Corporation for a night attack version of the AV-8B Harrier II.

Changes being considered for the night attack AV-8B include a forward-looking infrared system, night vision goggles and changes in cockpit lighting, according to Ed Harper, program manager for the AV-8B.

The forward looking infrared system provides a video picture of the ground ahead of the aircraft to help the pilot locate and attack ground targets at night as well as during daytime. Night vision goggles, similar to those used by infantry troops, will permit the pilot to see ground targets outside the infrared system's field of view.

"The contract permits us to define the changes to the AV-8B that will be the most effective in the night attack role," Harper said. "We're evaluating various systems according to how they meet the needs of the Marines."

If the program is instituted in the near future, the first night attack-equipped AV-8B could be in the air in late 1986, with production deliveries beginning in 1989.

The Marine Corps plans to order 300 AV-8Bs to provide

close air support, and 28 two-seat trainer versions of the aircraft.

Pet regulations outlined

Air Station residents who own pets must make sure that they abide by State, City, County and Station regulations, according to a recently published Air Station order.

Only certain animals are allowed on Station, while others are specifically prohibited. "Dogs, cats, guinea pigs, domestic rabbits, white mice, rats of U.S. origin, most common caged birds, fish and other cold-blooded animals purchased commercially in Hawaii are authorized," according to the order. "However, Air Station personnel are restricted to having no more than two mammal pets."

Mammals prohibited at the Air Station as pets include gerbils, hamsters, mongooses, monkeys, mice and rats — except of U.S. origin — wild rabbits, horses, ponies or other animals normally considered livestock. "Additionally," the order states, "game or hunting birds, pigeons, doves, poultry, Aztec dwarf parrots, Monk Parakeets, and certain species of Myna are not authorized."

Beekeeping, commercial or amateur, is prohibited on the Station, and snakes of all kinds are prohibited in Hawaii.

Veterinary care and registration requirements for privately-owned animals are strictly enforced. Dog and cat owners must register them at the Area Consolidated Family Housing Office at building 455 upon checking in. Those arriving from out-of-state must be registered at the Housing Office when released from the State of Hawaii Quarantine Facility.

"Owners must present certificates of City and County of Honolulu licensing, obtainable at any Satellite City Hall for dogs only; and for cats and dogs, certificates from the veterinary clinic verifying that distemper and rabies vaccinations have been administered and are current."

Should dogs or cats be acquired while in family housing, this registration process also applies. Dogs or cats acquired under the age of six weeks, which is too young for vaccinations, will be registered by the same process between six to eight weeks of age.

"Also, if a dog or cat is disposed of, given away, or is otherwise no longer residing in the owner's household, it must be reported to the Housing Office," states the order.

Limited veterinary care is available at the clinic here, but declawing, ear cropping, spaying or neutering are not done.

Available care includes examinations and certificates for sterilization.

The clinic also checks for internal parasites, heartworm, administers vaccinations and provides health certificates. But emergency care is available only when the veterinarian is present.

There are some areas of the Air Station in which animals cannot be maintained. These include duty areas, all bachelor quarters, Special Services activities, the Marine Corps Exchange, the Command Club Management System, the Commissary, beaches, campgrounds and picnic areas.

"Pet owners are totally responsible for their pets' actions," the order emphasized. Any animal that becomes vicious, a hazard, or a nuisance to neighbors will be placed under strict physical restraint by the owner. Pet owners will be held liable for any and all damages done by their pets.

Dogs and cats must be kept under positive restraint, which includes leashing or chaining the animal to keep it from roaming free or interfering with pedestrians. "In no case will the restraining device be longer than 20 feet or allow the animal to move outside the owner's yard," the regulation says.

According to the order, pets are a nuisance if they generate offensive odors; exhibit unprovoked vicious temperament; create excessive noise; scatter trash; deposit fecal matter on the premises of other persons or in public places; damage shrubbery or flowers; perform behaviors which may be caused by female animals in heat; or carry parasites that are likely to affect humans or other pets.

"Any stray that bites an individual will be disposed of," the order states. "And removal of any animals that is not a stray will be on case by case basis."

Animal bites should be reported to the Provost Marshal's Office, which will notify the Medical Officer and the Veterinary Clinic. Medical attention will be provided to victims.

"Penalties for violations of these regulations," the order states, "range from a letter of warning from the Air Station commanding officer to a notice of animal eviction."

For more information about pet regulations, read Air Station Order 10570.1.

SUCCESSFUL WEIGHT LOSS GUARANTEED!

nutri/system

weight loss centers

43 lbs.

LOST in 6 months

Henry Dean
Pearl City

Nutri/Match. You can lose 20 lbs. by Christmas and Save 20%.

Or lose 14 lbs. and save 14%. Lost 27 lbs? You've saved 27%. With Nutri/Match what you lose is equal to what you save.

And, with Nutri/System there's

- No constant calorie counting
- No drugs and injections
- No strenuous exercise
- Three meals a day with delicious NuCuisine
- Guaranteed results

And with Nutri/Match, you can save as much as you lose!

Hear the whole Nutri/System story at your next luncheon or meeting. Call Peggy Walsh at 488-1919 to set up a time for your group.

Aiea Haina 373-2101
850 West Hind Dr.

Downtown 531-4695
1164 Bishop St.

Kaliua 254-5811
Pali Palms Plaza

Pearl City 488-1919
98-1254 Kaahumanu

Offer good only for new clients
Offer expires 11/30/84
Offer not good in conjunction with any other offer

WINDWARD MALL

November & December Special Events

S	*	M	*	T	*	W	*	T	*	F	*	S
18		19		20		21		22		23		24
FREE BLOOD PRESSURE & HEART SCREENING		FRIDAY. Bring your keiki to see SANTA'S arrival at Windward Mall. Santa will pose with your keiki for a photo, and everyone gets a FREE balloon!		ACRES OF FREE AND EASY PARKING! OVER 2,300 PARKING SPACES FOR YOUR CONVENIENCE		WINDWARD MALL now has 60 great stores, with more coming! ... The best for everyone in your family		HAPPY THANKSGIVING!		SANTA ARRIVES! NOON Center Court		OPEN 'TIL 9 P.M. November 24 & 25 JUNIOR ACHIEVEMENT TRADE FAIR Hand-made items for sale by 36 student corporations Sat. 9:30-5:30 Sun. 10 A.M.-2 P.M. — Mallwide —
10 a.m.-5 p.m. Sears Wing				COMMENTS OR QUESTIONS ON OUR CALENDAR? CALL 247-8767		WE'RE ON YOUR SIDE!		WINDWARD MALL will be closed for the day.		WINDWARD MALL will remain open until 9 P.M. on Saturday throughout November and December		OPEN 'TIL 9 PM ANNUAL KANEHOE CHRISTMAS PARADE AWARDS CEREMONY 6 PM Center Stage
JUNIOR ACHIEVEMENT TRADE FAIR Awards Ceremony 1 PM Center Stage		SANTA'S HOURS Now through 12/9: M-F — 5:30-9:30 PM Sat. — 10:30-1 PM 2 PM - 5 PM 8 PM - 9 PM Sun. — 10 AM - 1 PM 2 PM - 5 PM				OPENING SOON! A & A Diamond The Hobby Company Windward Beauty Supply						
MALL HOURS: MON.-FRI. 10 AM-9 PM SAT. 9:30 AM-9 PM SUN. 10 AM-5 PM												

The Hawaii Marine is an unofficial newspaper published every Thursday by RFD Publications, Inc., 48-016 Alaloe St., Kaneohe, Hawaii 96744, in the interest of the U.S. Marine Corps personnel in Hawaii. All advertising is arranged by the publisher, RFD Publications, Inc., telephone 235-6861. Circulation is 8,000.

All news content is prepared by the Joint Public Affairs Office, Marine Corps Air Station, Kaneohe Bay, Hawaii 96863, telephone 257-2179. Articles for publication must be submitted no later than noon Thursday for the following week's publication. The Hawaii Marine solicits articles and photographs from all Marine Corps organizations; however, it reserves the right to edit or rewrite

material submitted.

Everything advertised in this publication must be made available for purchase, use or patronage without regard to race, creed, color, national origin, age or sex of the purchaser, user or patron. A confirmed violation or rejection of this policy of equal opportunities by an advertiser will result in the refusal to print advertising from that source.

Subscribers delivering the Hawaii Marine may request a voluntary monthly contribution of \$1 from residents of government housing at the Air Station; however, the contribution is strictly voluntary and residents will receive the Hawaii Marine whether they voluntarily contribute or not.

Navy League awards

by SSgt. Greg Berry

Five Marines were among 57 Honolulu Council Navy League award winners honored Oct. 25 at the Ala Moana Hotel.

Each year, the council honors outstanding Navy, Marine and Coast Guard junior officers and enlisted stationed in the Pacific area. Seventeen officers and 40 enlisted members were honored this year.

The Marine winners are; Maj. James B. Ramsden, director of Family Service Center here; SSgt. John A. Polanco, CommSptCo; SSgt. David R. Redondo, Fleet Intelligence Center, Pacific; SSgt. Carl A. Vincenti, HMH-463; and Sgt. Bruce T. Vincent, SOMS. DT-1 William R. Harte, Force Dental Branch at Camp H.M. Smith, joined the Marines in representing FMFPac.

This year's grand award winners are: Navy Lt. Janice

M. Hamby, Naval Base Pearl Harbor, and Chief Petty Officer Edward H. Lyle, Naval Ocean Processing Facility.

"This award makes us feel like we're a part of the community," said Harte, whose involvement with youth sports activities in the community was recognized by the Navy League. "They're saying thanks for getting involved," he added.

Community involvement included Scouting where several Marines were recognized for their contributions. Ramsden is the Station Scouting liaison officer, and Polanco has helped the Girl Scout program here by providing transportation and other assistance. Redondo is the varsity Scout coach for Troop 677.

"The award really surprised me," Redondo said. "I'd never heard of the Navy League before, but now I have and I'm very honored. The award made me realize that the things I do

help others," Redondo said he shares credit for the award with his wife, Maggie, because his community involvement is a family affair. He also coaches a youth soccer team and is active in his church.

"There's probably a lot of people who haven't been recognized for their contributions," Vincenti said. "I think I won the award just as much for them as for myself." Vincenti's community involvement has been centered around activities that, according to him, everyone gets involved with. But not everyone takes time to work with the Special Olympics or other youth activities like he did.

Vinenti, the youngest of the Marine recipients, helps lend a voice to several of the youth organizations here. He arranges support for the Little League and other youth sporting activities, and is active with the Zoo Hui, supporting the operations of the Honolulu Zoo.



This year's Marine recipients of the Honolulu Council Navy League awards, standing with Vice Admiral Donald S. Jones, Third Fleet commander, and HCNL vice president Ed Carter, are (from left) SSgt. Carl A. Vincenti, Sgt. Bruce T. Vincent, Maj. James B. Ramsden, SSgt. John A. Polanco and SSgt. David R. Redondo.

Home survival kit necessary

Every home should have a survival kit, not only for major disasters such as hurricanes, but also for other occurrences such as power outages.

A survival kit is a collection of items you should have on hand for use during emergencies and should include:

A battery powered portable radio; flashlight with spare batteries; First Aid kit; special medicines; and a five-day supply of canned goods and nonperishable foods that do not need cooking.

You can also include containers of water, sleeping bags or blankets; nonelectric can opener; personal toilet articles and sanitary needs and changes of clothing for each family member.

When you are told to evacuate, you should take along with you food for three meals, blankets and personal items such as medicine to be used at the evacuation center/shelter.

Other recommended items you should have for convenience before an emergency arises include; masking tape

for windows; an ice chest; fuel lanterns; candles and for stoves, hibachis or matches; and extra pet food.

CROUCHING LION INN

Celebrate Thanksgiving At Our House

We are planning a traditional Thanksgiving dinner here at the Crouching Lion and nothing would give us more pleasure than to welcome you to our table. Please come.

THANKSGIVING DINNER	10:50
(Children under 10)	5:25

Roast Turkey with Special Dressing, Giblet Gravy, Cranberry Sauce, Whipped or Sweet Potatoes, Corn-on-the-Cob and Fresh Baked Rolls. Dinner includes the Soup of the Day, Crouching Lion Salad, Pumpkin Pie or Ice Cream and your choice of beverage.

Served 4 pm to 9:30 pm
Thursday, November 22, 1984

Reservations: 237-8511

Oceanside between Kaaawa and Kahana Bay

ASK ABOUT OUR

\$3900

FAMILY EYE EXAMINATION PLAN!

SOFT CONTACT LENSES	From	\$79
EXTENDED WEAR LENSES	From	\$129
PRESCRIPTION GLASSES	From	\$49

All Contact Lens Fees include Lenses, Care Kit, Follow-up Care and 90 DAY TRIAL PERIOD.

COMPLETE PROFESSIONAL VISION SERVICES
DEDICATED TO QUALITY AND SERVICE IN VISION CARE

Dr. Charles Dean
Optometrist

KAILUA
1391 Hekuli St
261-9735

ENGRAVED FREE **CROSS** SINCE 1848

Give the distinctive gift of a Cross fine writing instrument for Christmas.

With every purchase of a classic Cross writing instrument, you receive engraving free. Personalize a special gift for that special person. Available in chrome, classic black, 10 Karat Gold Filled and 14 Karat Gold Filled. Men's and Women's styling

Free engraving with purchase of every writing instrument Thursday, November 15 and Friday, November 16, 10:00 a.m. until 3:00 p.m.

In the Camera Department at **KANEOHE MARINE CORPS MAIN EXCHANGE**

CROSS SINCE 1848

This Ad Not Paid For By Marine Corps Exchange

LONGS DRUG STORES

Longs Drugs Pearlridge

Make Longs a part of your day

Great Christmas Giveaway

YOU CAN WIN UP TO \$100* AND QUALIFY FOR THE GRAND PRIZE: A ZENITH 25" COLOR T.V.!!

TO ENTER, FILL OUT AN OFFICIAL ENTRY COUPON - AVAILABLE ONLY AT LONGS DRUGS PEARLRIDGE - AND DEPOSIT IT INTO THE ENTRY BOX LOCATED IN THE STORE. FACSIMILES OR REPRODUCTIONS NOT ACCEPTABLE. MUST BE 18 YEARS OR OLDER TO ENTER. NO PURCHASE NECESSARY. LONGS EMPLOYEES AND FAMILIES ARE NOT ELIGIBLE. THERE WILL BE THREE WINNERS EVERYDAY FOR THE MONTH OF NOVEMBER (EXCEPT THANKSGIVING DAY) AND ONE GRAND PRIZE WINNER TO BE DRAWN ON 12-1-84.

THE FOLLOWING PRIZES WILL BE AWARDED EACH DAY:

SATURDAY: 1 - \$50 LONGS GIFT CERTIFICATE (TOTAL OF 24)	ON: 1 - \$100 LONGS GIFT CERTIFICATE (TOTAL OF 5)
THRU: 1 - \$25 LONGS GIFT CERTIFICATE (TOTAL OF 24)	FRIDAYS: 1 - \$50 LONGS GIFT CERTIFICATE (TOTAL OF 5)
THURSDAY: 1 - \$10 LONGS GIFT CERTIFICATE (TOTAL OF 24)	1 - \$20 LONGS GIFT CERTIFICATE (TOTAL OF 5)

NEW DRAWING EVERYDAY! YOU MUST ENTER EACH DAY TO BE ELIGIBLE FOR THE PRIZES AWARDED THAT DAY. FULL CONTEST RULES AVAILABLE AT LONGS DRUGS PEARLRIDGE.

SALE STARTS THURSDAY, NOVEMBER 15 THRU WEDNESDAY, NOVEMBER 21.

4% STATE TAX ADDITIONAL. STORE HOURS: 8:30 A.M. TO 8:00 P.M. DAILY. EXCEPT SUNDAY. SUNDAYS 8:30 A.M. TO 8:00 P.M.

ALL Goody PRODUCTS BUY ONE - GET ONE FREE!

BUY ANY GOODY PRODUCT AT LONGS EVERYDAY LOW PRICE AND CHOOSE ANOTHER OF EQUAL VALUE OR LESS

ABSOLUTELY FREE!!

LONGS DRUG STORES

Birthday celebrations

Cont. from A-1

The oldest Marine was 55-year-old MGySgt. Marden R. Durkee, 2/3, who entered the Corps on Oct. 18, 1946. Discharged in 1949, Durkee waited nearly 16 years before rejoining the Marine ranks in 1965. He served two tours in Vietnam with 3/1 and is now the Operations Chief of 3d Marines.

The youngest Marine, 18-year-old LCpl. Brian D. Rood, 1/12, was born on Feb. 27, 1966. He entered the Corps on Sept. 19, 1983, completed basic training at San Diego, Calif., and attended Field Artillery School at Camp Pendleton, Calif. He reported to his present unit Aug. 1 of this year.



The Nov. 9 ceremony at the Air Station's Pop Warner Field included color guards, honor guards and uniforms spanning the past 209 years.



Sgt. Chuck Jenkins photo

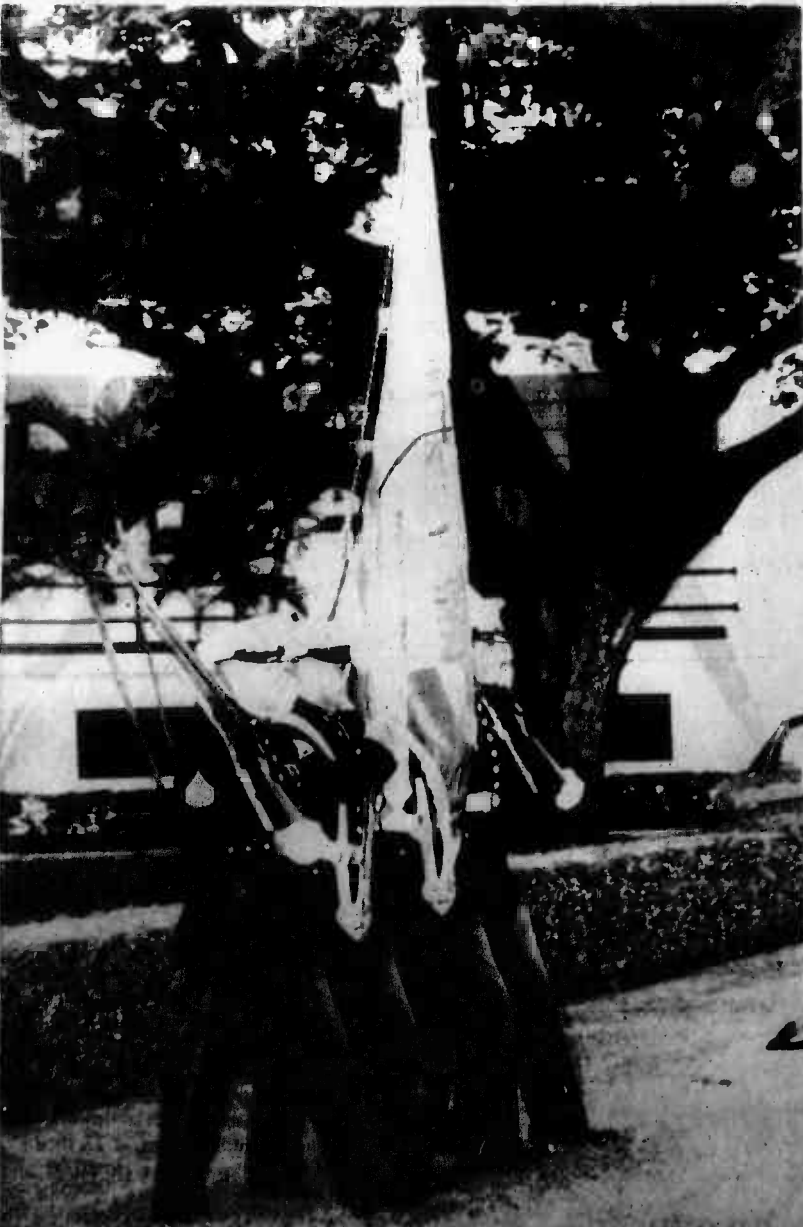
A Leatherneck from Marine Barracks Hawaii donned an 1890 Marine Corps uniform during the Annual Marine Barracks Hawaii Sunset Parade held at Pearl Harbor, Nov. 8.

209 years of Marine Corps uniforms, traditions, history reviewed



SSgt. R.A. Chan photo

Marine uniforms of the past were highlighted in the uniform pageant Nov. 9 at MCAS Kaneohe Bay.



A Marine Honor Guard parades the colors during the evening ceremony at Pearl Harbor.



The Marine Corps birthday cake is escorted onto Pop Warner Field.



Marines from Marine Barracks Hawaii stand for a color guard during the Annual Marine Barracks Sunset Parade held at Pearl Harbor, Nov. 8.



LCpl. F.S. Page wires a tent during the construction of the CSSA at Bellows.



Engineer Marines bring traction mats ashore during operation Rapid Support.

Support capabilities tested

By SSgt. W.S. Saunders

BELLOWS AIR FORCE STATION, Hawaii. While most eyes focused on the "cutting edge" of the Brigade during Operation Bell Volcano on Kauai, the support element of the Brigade conducted its own operation here to enhance its combat capabilities.

Brigade Service Support Group stormed the beaches of Bellows to execute a ship-to-shore amphibious landing of all classes of supplies needed to support a Marine Amphibious Brigade. The BSSG sealed operation was called "Operation Rapid Support."

"The landing started with simulated infantry resistance," said LtCol. W.D. Maxon, operations officer. "Regimental Landing Team 3 was forward and moving in, seizing their immediate objective to allow the combat support element to come ashore," he added.

There were isolated pockets of resistance on the beach. To combat the resistance, a provisional rifle company was formed. With the help of Marine Aircraft Group 24 and the 3d Marines, the PRC landed and secured the beach.

Once the beachhead was secured, the general off-loading started and the beach support area was established," said Maxon. "Our shore party and engineer Marines worked with sailors from Beachmaster Unit 1 out of San Diego, Calif. to execute the ship-to-shore evolution."

The following day, the Combat Service Support area was phased in. The BSSG Marines continued to build the CSSA,

and refine the internal security so they could work in a normal mode.

"To make it more realistic, an exercise control team was formed," said Maxon. "The team inserted scenarios based on Marine Corps Combat Readiness Evaluation System test standards. We had to respond and coordinate with the different companies involved and higher headquarters to solve the problems."

"The troops were very motivated, especially since having the opportunity to carry their weapons, wear helmets and flak jackets like their infantry counterparts," said Maxon. The scenario had been driven to allow for some excitement that they wouldn't normally get at Kaneohe, according to Maxon.

"As far as their mission, it worked well also," said Maxon. "If a job requires third or fourth echelon maintenance, we have the capability to handle it out here. We can do almost everything we'd have to do if we go to war," Maxon concluded.

"Exercises such as this make the troops better," said Capt. E.B. Craten, operations officer, Maintenance Co. "It gets a little stagnated sitting back in the rear. They get to come out here and see how it works in the field. They do things out here they can't do in the rear, such as wiring tents, working in a field environment. It gives them an appreciation of garrison life."

This exercise was the second of two conducted this year. The first was conducted during operation Kernal Blitz in January. Operation Rapid Support culminated with a 10 mile conditioning hike from Bellows lead by Gen. O.K. Steele, commanding general of the 1st Marine Brigade.

Neck Pain? Backache?
Don't Suffer Needlessly!

Pacific Chiropractic

TRAINED IN 8 RECOGNIZED TECHNIQUES INCLUDING "LOW FORCE"

COMPLETE PHYSICAL EXAM

X-RAY FACILITIES

COMMON SYMPTOMS:
• BACK PAIN
• HEADACHES
• NECK PAIN
• ARM & LEG PAIN
• JOINT PAIN
• MUSCLE SPASMS
• NUMBNESS
• PINCHED NERVES

DR. JEANNE MICHAELS
R.N. DC.

SPECIALIZING IN:
• ON THE JOB INJURIES
• AUTO ACCIDENTS
• SPORTS INJURIES
• CHRONIC & DIFFICULT CASES
• GENERAL PRACTICE
• FAMILY CARE PLAN
• PERSONALIZED CARE

602 KAILUA RD. NO. 207, KAILUA
(between Cornet & Hardware Hawaii-2nd floor rear)
NO CHARGE FOR BRIEF SPINAL ANALYSIS

261-0831

Enjoy...
THANKSGIVING DINNER
at beautiful
Rob Roy's

YOUR DINNER INCLUDES
(Choice of one)
Minted Fruit Cup
French Onion Soup Crisp Salad Greens

ROAST TOM TURKEY
Almond Stuffing Giblet Gravy
Sweet Green Peas Candied Yam
Jellied Cranberry Sauce
Whipped Potato, Steamed Rice
or French Fries

DESSERTS
Pumpkin Pie, Ice Cream or Sherbert
Coffee or Tea

\$7.95
Children's Dinner \$4.25

DINNER SERVED FROM
12 NOON. (We're Open At
6:30 a.m. For Breakfast)

Rob Roy's
1001 Kalia Street
Kailua, Hawaii
Phone 262-6992

Save up to **70¢**

Party Layer Cake

1 package (3 oz.) JELL-O® Brand Orange Flavor Gelatin
1/2 cup boiling water
1 can (8 oz.) crushed pineapple in juice*
2 cups ice cubes

2 baked 9-inch yellow or white cake layers, cooled
1" container (8 oz.) BIRDS EYE® COOL WHIP® Non-Dairy Whipped Topping, thawed

Thoroughly dissolve gelatin in boiling water. Add undrained pineapple and ice cubes. Stir gently until gelatin begins to thicken, 3 to 5 minutes. Remove any unmelting ice and chill until slightly thickened. Measure 1 cup and spoon over one cake layer. Chill about 10 minutes.

Meanwhile, thoroughly blend whipped topping into remaining gelatin mixture. Place second cake layer over filling and spread gelatin-topping mixture over top and sides of cake. Chill. Garnish with fruit, if desired. Store any leftover cake in refrigerator. Makes 1 cup filling and about 4 cups frosting.

*Flavor variations:
Use strawberry, peach or raspberry flavor gelatin and 1 package (10 oz.) BIRDS EYE® quick thaw strawberries, peaches or red raspberries. Dissolve gelatin in 1 cup boiling water, add fruit and stir gently until fruit thaws and separates and gelatin begins to thicken. Then proceed as above.

© 1984 General Foods Corporation
Birds Eye and Cool Whip are registered trademarks of General Foods Corporation

With Cool Whip and these coupons, you can enjoy great tasting desserts topped off with super holiday savings!

STORE COUPON

20¢ SAVE 20¢
on one tub of Cool Whip® Non-Dairy Whipped Topping or Cool Whip™ Extra Creamy Dairy Recipe Whipped Topping

STORE COUPON

50¢ SAVE 50¢
on any two tubs of Cool Whip® Non-Dairy Whipped Topping or Cool Whip™ Extra Creamy Dairy Recipe Whipped Topping

To the retailer: General Foods Corp. will reimburse you for the face value of this coupon plus 8¢ for handling if you receive it on the sale of the specified product and if upon request you submit evidence of purchase thereof satisfactory to General Foods Corp. Coupon may not be assigned, transferred or reproduced. Customer must pay any sales tax. Void where prohibited, taxed or restricted by law. Good only in U.S.A., Puerto Rico and U.S. Gov't install. Cash value: 1/20¢. Coupon will not be honored if presented through outside agencies, brokers or others who are not retail distributors of our merchandise or specifically authorized by us to present coupons for redemption. For redemption of properly received and handled coupon, mail to: General Foods Corp., P.O. Box 103, Kankakee, IL 60902. This coupon good only on purchase of product indicated. Any other use constitutes fraud. LIMIT—ONE COUPON PER PURCHASE. OFFER EXPIRES JANUARY 31, 1985.

GENERAL FOODS CORPORATION **20¢** GENERAL FOODS CORPORATION **50¢**



A patient receives emergency treatment for a stomach wound prior to being transported to a field hospital.

SSgt. Barb Zimmerman, USAF, photo



HM3 Brad Coleman administers



A Marine with head injuries is helped to a nearby medical aid station.

AFC Chad Davis photo



DT3 Lori Henke, 21st Dental Company, checks on a "DOA."

SSgt. Barb Zimmerman, USAF, photo

Navy 'MA in Mass

by SSgt. W.S. Sa

BELLOWS AFS, Hawaii -- Comp Battalion, BSSG, conducted a mass group's logistics exercise here, Nov. 5

Units involved in the exercise were and BSSG personnel. During the exercise diagnosed everything from minor cuts of nuclear blast.

The exercise was designed to allow set up a hospital and handle the large they would encounter in an actual combat determine, according to injury, which treated first.

"In a triage, patients with minor injuries over the more severe cases," said HM petty officer, 3d Medical Battalion. "The opposite of how things are run in the front lines as soon as possible." The



Medical personnel rush an injured Marine from a Ch-46 medevac chopper.

SSgt. Barb Zimmerman, USAF, photo



Litters waiting



...gives an EKG to his patient.



A medevac bird sets down near a field full of casualties.

'ASH' unit gets workout in Casualty Exercise

Saunders
Company A, 3d Medical
Group, conducted a
casualty drill during the
exercise, Nov. 5-7,
1984. The exercise
units were HMM-265, HMH-463
and HMM-464. The
exercise, Corpsmen
and medical personnel
sorts cuts to injuries on victims

allow personnel of Co. A to
handle a large number of patients
in a simulated combat situation, and to
determine which patients would be

priority for injuries have priority
for treatment. HMC E.D. Reese, leading
the exercise, said, "This is the exact
situation in the rear. The reason for
the exercise is to get them back to the
field hospital as

equipped with X-ray, operating room and a laboratory.
"When the casualties came in by helo, they were sorted
according to their injury," said Reese. "They would then go
to the shock surgical treatment area where they were again
sorted. The patients that would benefit the most from
surgery were immediately taken to surgery, via X-ray or the
lab."

The operating room was limited to two casualties at one
time. The others were taken to an acute-care ward where
they were stabilized, IVs started and again sorted according
to injury.

The 19-man staff handled 49 patients during the three-day
exercise. "We try to have exercises such as this at least every
six months," said Reese. "The last one was held during the
IG inspection," he said.

"I felt we did very well on this exercise," Reese continued.
"Considering that a lot of these kids have never done this
type of training and have never been to combat, or have had
any actual experience. These corpsmen carry medical MOs
but their main function in garrison is supply."



An assortment of bandages used in the emergency treatment of wounds.



...carrying injured Marines are carried to a waiting ambulance.



Cpl. L.F. Rodriguez, HMM-265, installs stretchers during flight.

Join
the great



american
smokeout

American Cancer Society



Adopt a smoker today!

I, _____, as a nonsmoker, will take it upon myself to help _____ on the path to smokelessness. For my part I will provide you with constant encouragement, fruit and peanuts if need be, and a shoulder to cry on.

It will be expected that _____ will assist me by adhering to the following suggestions:

1. Hide cigarettes, ashtrays, lighters and matches.
2. Tell all your friends that you have been adopted and will not smoke on the day of the Great American Smokeout (GAS), the third Thursday in November.
3. Call on your foster nonsmoker (me!) in times of weakness.
4. Refrain from frequenting smoke filled rooms.
5. Repeat to yourself over and over "not smoking is a GAS."

_____, the foster nonsmoker will try to cajole the aforementioned smoker to continue on the road to smokelessness following the Great American Smokeout, but this formal arrangement will conclude 24 hours after it began.

Signed: _____ Signed: _____ Date: _____
(nonsmoker) (temporary smoker)



BUZZ'S ORIGINAL STEAK HOUSE

In Lanikai

IS CELEBRATING THEIR

22ND ANNIVERSARY

Help us Celebrate!

WITH THE PURCHASE OF ONE DINNER, YOU MAY REDEEM THIS COUPON AT ANY OF OUR LOCATIONS AND RECEIVE A

RUSSEL LOWREY POSTER

(20⁰⁰ VALUE)

ONE COUPON PER DINNER • GOOD DURING THE MONTH OF NOVEMBER ONLY. THIS OFFER NOT VALID IN COMBINATION WITH OTHER COUPON OFFER.

— VALID AT ANY LOCATION —

LANIKAI
261-4661

KAILUA
33 Aulike St.
261-7944



Coupon good Sun.-Thurs. Only

PEARL CITY
487-6465

MOILIILI
944-9781

Come Join Us For A Traditional
Family Thanksgiving
3 P.M.-8 P.M.



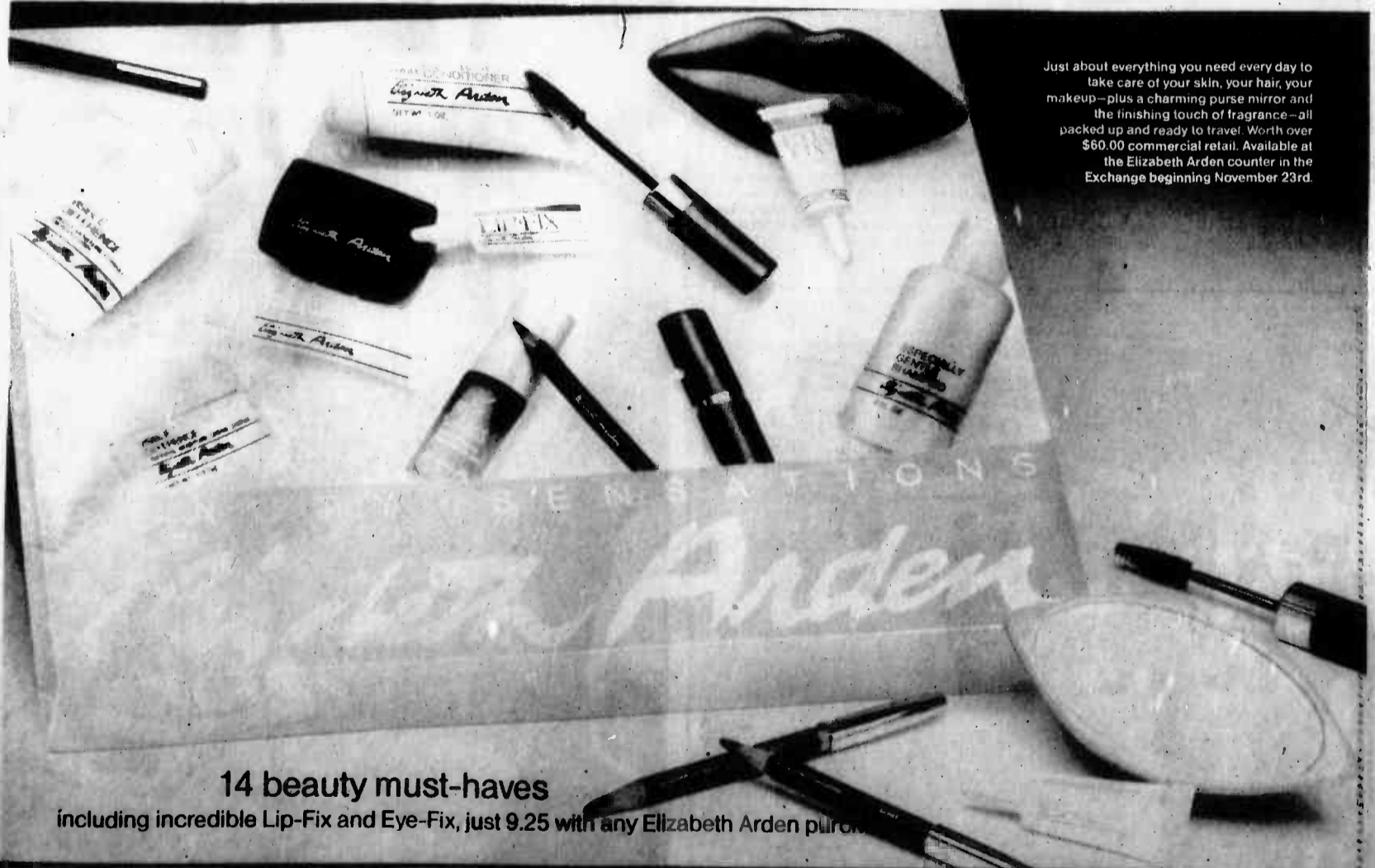
Turkey Dinner w/All The Trimmings & Pumpkin Pie
\$795 Adult
\$550 Junior
\$250 Keiki

Also Serving Complete Menu Selections

For Reservations
261-8724



Kailua Square
315 Uluniu St.
Kailua



Just about everything you need every day to take care of your skin, your hair, your makeup—plus a charming purse mirror and the finishing touch of fragrance—all packed up and ready to travel. Worth over \$60.00 commercial retail. Available at the Elizabeth Arden counter in the Exchange beginning November 23rd.

14 beauty must-haves

including incredible Lip-Fix and Eye-Fix, just 9.25 with any Elizabeth Arden purchase

BEAUTY • SENSATIONS

Elizabeth Arden

Most watchable Marine selected

by Sgt. L.C. Brooks

Excitement seemed to run through the customers at the Marine Corps Exchange parking lot Friday, as 13 Station and Brigade Marines vied for the title of "Hawaii's Most Watchable Marines," sponsored by the Regime Fashion show in honor of the Marine Corps' 209th Birthday.

Marines modeled clothing from the Exchange that showed off their physical attributes, and detailed workmanship of the clothes. A variety of clothing was worn, including aloha, swim and dress attire. Marines were escorted by the Governor's Official Beauty Queen Models, who also modeled fashionable offered by the Exchange.

The Marines were judged on stage presence, grooming, sex appeal, physical appearance and personality.

The judges had a difficult choice to make, but finally reached a decision. Before announcing who had captured the title of "Hawaii's Most Watchable Marine" the audience found out who was selected as Mr. Good Legs and Mr. Supersmile.

LCpl. John M. Mohring, H&MS-24, won Mr. Good Legs, legs down. "I was excited about the contest because it gave me a chance at winning a photo shoot. I've always been interested in modeling and this might be my chance," said Mohring. Mr. Good Legs also won a variety of prizes. Mr. Supersmile was won by Jim Scribner.

The contest climaxed when LCpl. James Rooker, 1/12 was bequeathed "Hawaii's Most Watchable Marine." Rooker received approximately \$1,000 in gifts and prizes.

"I was shopping in the exchange when someone asked me if I was interesting in competing. I said, 'sure.' Now I'm really excited; the prizes are all great," said Rooker, who also received the photo shoot he's looking forward to.

All of the other contestants received prizes for competing. The three winners will be featured this weekend at Ala Moana Centerstage during a fashion show.



LCpl. James Mohring, 1/12, is recognized for claiming the title of "Hawaii's Most Watchable Marine."

New memorial denied; conflicts to be added to monument

The Vietnam Marine Memorial Foundation has launched a campaign to erect another Marine Corps monument, in addition to the Marine Corps War Memorial in Arlington, dedicated to all Marines.

The foundation has claimed that land has been set aside on Camp Pendleton for a memorial. There are no intentions to set aside land for the memorial at Camp Pendleton, according to Headquarters Marine Corps officials.

The Marine Corps is prohibited by DoD from sponsoring or endorsing activities of private organizations, and is not permitted to lend official support to private fund-raising efforts. Also, Section 7881 of the FY-85 Defense Authorization Act prohibits the use of symbols, names or initials of the United States Marine Corps in connection with any promotion that would suggest approval or endorsement.

Although the Marine Corps can't prohibit Marines from contributing to such fund-raising efforts, Marines and their families are advised that the Marine Corps has disassociated itself from this campaign and does not endorse it.

A memorial now exists for all Marines, past, present and future, and the Commandant of the Marine Corps is proposing that the names "Dominican Republic," "Lebanon" and "Grenada" be added to the Marine Corps War Memorial in Arlington.

Revised eligibility guidelines for SNCO degree program

Staff sergeants and gunnery sergeants interested in applying for the FY-85 Staff Noncommissioned Officers Degree Completion Program can start sending in their applications for consideration.

Applications must be in one of the following disciplines: Financial Management, Psychology, Safety, Accounting, or Education with a concentration in guidance and counseling.

To apply, Marines must be serving in balanced or over zones. This year's selection

board will not consider applications from Marines serving in zones that would be awarded an SRB payment.

If applying for safety or accounting disciplines, a minimum of six semester hours or nine quarter hours of study in the major subject area must be completed, with a "B" average or the equivalent received from an approved service school.

To apply, Marines must have completed a minimum of two years on station, which can be waivable providing

the applicant intends to submit an application to an accredited institution in the same area where he/she is stationed. Individuals serving overseas will have to complete their assigned tours before being assigned to the program.

The FY-85 SNCO/DCP selection board will convene in May 1985. Application deadline is April 12, 1985, and should be submitted via the appropriate chain of command to CMC (Code MMEA-14).

For details see ALMAR 238/84 of Nov. 5, 1984.

DR. F. BROCK HOPKINS
(formerly of Enchanted Lake Animal Clinic)
ANNOUNCES
His relocation to:
AIKAHI PARK ANIMAL CLINIC
AIKAHI PARK SHOPPING CENTER
(Behind Firestone, Kailua)
HOURS:
MON., TUES., THUR., FRI.
8:00 AM-5:30 PM
WED., SAT.
8:00 AM-NOON
Dr. Hours by Appt.
254-1548

SUNRISE SPECIAL
• Mon.-Fri.
7-11 AM
2 Fluffy Pancakes
1 Egg - Any Style
2 Smokey Strips of Bacon
ALL FOR ONLY
\$1.95
NOT VALID SAT. or SUN.
EXPIRES 12/15/84

BIB'S
FAMILY RESTAURANT
315 Ulunui St., Kailua
261-8724

SUPER SAVER SALON

KAILUA SUPER SAVER SALON
OUR SPECIALTIES FOR WOMEN, MEN & CHILDREN

- PRECISION HAIRCUT \$6
- SHAMPOO/CONDITIONER/FINISH \$6
- PERMANENT WAVE
with either or both of the above ... additional \$6

NO APPOINTMENT! COME IN TODAY!
Monday, Tuesday, Wednesday, Saturday, 9:30 a.m.-8:30 p.m.
Thursday, Friday, 9:30 a.m.-9:00 p.m.; Sunday, 10 a.m.-4 p.m.
(service subject to time availability)
Must be 12 years or older for permanent wave.
Long hair slightly higher.

LIBERTY HOUSE

INCREDIBLE... BUT TRUE
WE HAVE MOVED 400 FANS... WITH THIS INCREDIBLE SALE, 100 FANS ARE LEFT AND MUST BE SOLD... DON'T MISS OUT, THIS COULD BE THE BEST CEILING FAN OFFER...
FINAL DAYS

BUY 1 GET 1 FREE!

30% OFF ALL LIGHT KITS!

SALE ENDS SUN. 11/15/5 p.m.

2 FOR \$88 (36" 4 BLADE MOD KB-36)
2 FOR \$118 (FLUSH MT. 52" SIERRA MOD. #80F)
2 FOR \$228 (52" SAN FRANCISCO 5 BLADE)

CASABLANCA • HUNTER • SAN FRANCISCO
on display for comparison only

PACIFIC SURPLUS & DISTRIBUTORS LTD.
MON. THRU FRI. 9:30-6:00 p.m. 262-8131
SATURDAY 9:30-5:00 p.m. 1247-F KAILUA RD.
SUNDAY 11:00-5:00 p.m. KAILUA
WEDNESDAY CLOSED 455-9010
98-593 KAM HWY.
PEARL CITY

MILITARY SPECIAL ONLY \$199*

OPEN HOUSE

INTERNATIONAL GIVES YOU FREE RAQUETBALL

First Time Offered

Enjoy our exciting aerobic classes or workout in our complete Fitness Center with the largest Nautilus & Free Weight system in Hawaii. There's no better time than right now to join your friends at Hawaii's largest & most complete fitness center.

START FEELING GOOD ABOUT YOURSELF!

* Individual Annual Membership Good at Paa & Kaneohe Clubs Offer expires Nov. 30, 1984

INTERNATIONAL Fitness & Racquetball Centers®

Kapiolani Club 1680 Kapiolani Blvd. 943-8990
Kaneohe Club 45-608 Kam Hwy 235-5839
Paa Club 2810 Paa Street 833-6619

Come In Today!

PRESENT COUPON FOR ONE FREE VISIT Expires Friday November 30, 1984

INCLUDES FREE USE OF AEROBIC CLASSES • NAUTILUS WEIGHT EQUIPMENT FREE WEIGHTS • SAUNA • JACUZZI • COLD PLUNGE BASKETBALL • VOLLEYBALL

Limit one coupon per person • 18 or over • Oahu resident • By appointment only
GOOD AT ALL 3 LOCATIONS: Kapiolani Club, 1680 Kapiolani Blvd., Kaneohe Club, 45-608 Kam Hwy., Paa Club, 2810 Paa St., 833-6619

Taste buds aren't excited by ancient food

by SSgt. W. S. Saunders

There's not much about Hawaii I don't like. In fact, I'd be hard pressed to think of two things normally associated with this state, as opposed to any of the other 49, that are totally distasteful to me. But I can come up with one — POI!

Introduced to it for the first time at a luau, it became readily apparent that it and my taste buds were, and would continue to be, on divergent paths.

Poi is a simple mixture of water and the taro root, one of the oldest known vegetables. These rudimentary ingredients are blended, and the result is a pudding-like substance that most Hawaiians love and swear by, which most mainlanders hate and swear at.

Taro was introduced to the islands about 450 A.D. by the adventuresome, seafaring Polynesians who discovered this land. On their canoes they carried cooked crushed taro wrapped in ti leaves. By not adding water to it until it was ready to be eaten, the taro

would not spoil or ferment for several months.

Taro is grown throughout the islands and there are more than 80 varieties, usually distinguishable by the interior color of the root. Many of the taro patches found in Hawaii are said to be over a century old. However, the majority of the patches where taro is commercially grown is found in Hanalei Valley on Kauai.

In ancient Hawaii, poi making was a task left solely to the men. The oblong, bulbous root of taro was first peeled of its fibrous bark, then cooked. Once the root was softened by boiling, it was mashed with a uniquely fashioned stone object known as a "poi pounder." Small amounts of water were added during the mashing.

As the root and water mixture changed consistency, lighter weight poi pounders were used until desired consistency was achieved — (rare, medium, or well done!) The poi was then put into wooden bowls and allowed to ferment; the degree of fermentation again determined by taste preferences.

For centuries poi served as the staple food of Hawaiians, and it is said that a man or woman would consume up to 15 pounds of it daily. The well developed bone structure, exceptional teeth and smooth skin of the ancient Hawaiians attest to the nutritional value of poi.

The small starch grains of poi make it easily digestible. It was, and still is, a popular baby food, and people with ulcers find it remarkably satisfying and devoid of the side effects of other foods that tend to aggravate their condition. Additionally, poi is practically nonallergenic.

Of course, the industrious ancient Hawaiians would never accept only one use for their plants. While the root of the taro plant was the basic ingredient of poi, the leaves were also edible and prepared in a variety of ways. In fact, the Hawaiian word for the taro leaf is "lu'au." Sound familiar?

Medically, the plant had many uses: cut portions of the stalk were rubbed on insect bites to reduce the sting; people with fever could reduce the discomfort by drinking a

concoction of the juice of the stalk blended with sugar or coconut milk; the root, when cut, was also used as a styptic to control bleeding, and thickened poi was applied as a poultice to infected sores.

Fresh poi is supposed to be the most bland tasting of all. To make it more flavorful and give it a pleasant "tang," the recommendation is to allow it to ferment at least a day. During the fermentation, "friendly" bacteria go into action and supposedly improve the taste. If, however, that doesn't do the trick, the other suggestion is to eat poi only after you've taken a bite of more flavorful food, e.g., some kalua pig, followed by a little lomilomi salmon, a forkful of long rice and then a fingerful of poi.

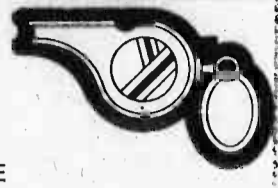
The traditional manner of eating poi is with your fingers. If it's thick, use one finger; a medium consistency needs two fingers. However, twirling it around a spoon has become the more accepted and discreet method of eating it.

Poi is both readily available and nutritious. The next step is to make it palatable. I'm not

knocking Hawaiian food; it's just that I happen to agree with the zillion other people who say that poi is horribly bland. I can't like some

compare it to wallpaper paste as I've never tried the latter. But I've tried poi — ONCE! I stick to pineapple, thank you.

LET'S BLOW THE WHISTLE ON ENERGY WASTE



SUSAN H. CHAPMAN, M.D.
Obstetrics & Gynecology
HMSA - CHAMPUS
Participating Physician

Pali Palms Plaza Suite A305
Kailua, Hawaii

Hours by appointment 254-1588

HAWAII PLASTIC SURGICAL ASSOCIATES INC.

DR. MICHAEL D. WEINER, M.D.
Diplomate American Board of Plastic/Reconstructive Surgery
Member of American Society of Plastic Reconstructive Surgeons, Inc.

Plastic, Reconstructive & Hand Surgery, Chemosurgery for Skin Cancer, Oriental Eyelids, Liposuction (fat) Suction

- Weekend & evening appointments
- Reasonable rates
- Financing available O.A.C.
- Special Military Rates
- Participating HMSA
- Medicare Checks Accepted with Full Payment for Elderly.

45-934 Kam Hwy. Kaneohe
660 Kailoa Rd. Kailua
Queen's Physician Off. Bldg.
1380 Lusitana, Suite 401
536-3661

PH. 247-8133

At a glance

Holiday meals

Guests of military personnel are invited to share holiday meals at the Air Station's dining facilities on Thanksgiving, Christmas and New Year's Day. Reservations are not required. All meals will be served from 3:30 to 5 p.m.

The meal cost is \$5.25 for officers and \$2.10 for all enlisted personnel receiving commuted rations; personnel authorized subsistence are only required to sign the meal

card roster. Guests 12 years old and older will be charged \$5.25, and \$2.60 for children.

Postal hours

The Main Post Office, located in building 1090, will modify its hours of operation Nov. 19 through Dec. 24 to accommodate holiday mail. The hours will be from 10 a.m. to 6 p.m., and money orders will be available until 3 p.m.

The post office in building 835 will continue with normal

operating hours from 8 a.m. to 4 p.m. Both facilities are open Monday through Friday only.

Toys for Tots

Marines from 4th Force Reconnaissance Company in Honolulu have started this year's Toys for Tots drive to collect thousands of toys to bring a happier Christmas to underprivileged children in Hawaii.

Individuals wanting to donate toys or gifts should

contact HN2 Bob Easton from 7 a.m. to 4 p.m., Monday through Friday, at 471-0202/0203.

Blood Drive

The Bloodmobile from Tripler Army Medical Center will visit the Air Station Branch Medical Clinic, building 216, Monday from 8 to 11:30 a.m. Basic donor requirements are: 18 through 65 years old, weight of at least

Cont. on A-12

Package Specialists

OUR SERVICES INCLUDE:

- BROWN WRAPPING BOXES FOR MAILING \$1.25
- PARCELS PACKED FOR MAILING \$4.00 to \$7.00
- POSTAGE (HAWAII, MAINLAND AND INTERNATIONAL)
- POST OFFICE DELIVERY DAILY \$1.25
- PARCEL INSURANCE (UPON REQUEST)

THREE CONVENIENT LOCATIONS:

KAHALA MALL (NEAR INDIA IMPORTS) MON.-FRI. 4-8 pm
WINDWARD MALL (ACROSS FROM LIBERTY BANK) SAT. 12-8 pm
WARD WAREHOUSE (NEXT TO RARE DISCOVERY) 737-7969

...AND HAVE A MERRY CHRISTMAS FROM PACKAGE SPECIALISTS HAWAII!

COMPLETE EYEGLASSES

\$45.50 SINGLE VISION (Clear) THE ORIGINATORS OF QUALITY AFFORDABLE EYEWEAR \$65.50 BIFOCALS (Clear)

Start that optical wardrobe you've always wanted. SALE ENDS NOV. 30, 1984

INCLUDED INCLUDED INCLUDED INCLUDED

Plastic or Glass Lenses 1-61 Oversized or Regular Plastic or Metal Frames All Lenses Comply with Fed. Std. Standards

Spectacle Shoppe 436 Piikoi St. (Corner of Waimanu & Piikoi) Kailua Holiday Mart 524-2730 (Via Moana Center) 261-4454

CARL'S General Tire

TIME OUT FOR SAVINGS Neighborhood Professionals

COUPON Wheel Alignment \$10.88 Expires November 30, 1984

COUPON Brake Reline \$39.00 Expires November 30, 1984

COUPON Electronic Engine Tune-Up \$37.00 Expires Nov. 30, 1984

Chiropractic can show you the way to FEEL GOOD... NATURALLY!

Dr. Lawrence J. Connors, M.A., D.C. Dr. Michael L. Clervo, D.C.

FAMILY CHIROPRACTIC CENTER, INC.

OPEN 6 DAYS A WEEK MON.-FRI. 8:00 AM-8:30 PM SAT. 8:00 AM-1:30 PM
45-1144 KAM HWY., SUITE 200-200A LOCATED IN HONOLULU FEDERAL SAVINGS & LOAN BLDG. 2ND FLOOR

Things you should know about Chiropractic

- Thorough X-ray Exams
- Massage & Manipulation
- No Harmful Drug Use

The whole body is the most important concern of chiropractic. It deals with the inter-relationship of the central nervous system, the brain and the spinal column and their angle and combined effect on the rest of the body, especially when malfunctions occur.

The Sacroiliac Slip

The wrong bend at the wrong time, and "Oop!" There goes my sacroiliac. This joint between the spine and hipbones can slip slightly through accident or exercise activity. It can cause either immediate or delayed pain in lower limbs. Your chiropractor can correct the condition by tender spine and active manipulation. It's a simple matter, we can help you.

SAVE! 20% to 25%

RETAILERS! You traditionally depend on the Christmas Shopping Season for up to 45% of your Gross Annual Sales. Target YOUR CLIENT, in YOUR Community, fast & effectively.

Call now for details on how you can advertise your products and services in the best possible way — during the busiest season of the year — and **SAVE!**

235-5881 Sun Press

Publishers of Hawaii Daily News, Sun-Flyer, Hawaii Marine, Honolulu Sun News, Midweek Sun Times and Sun Press
45-918 Alaolu Dr., Kaneohe, HI 96744

AMERI★LINE USA Built Tough! Priced Right!

General Ameri★SBR® Steel Belted Radials \$35.95 P155/89R13

SIZE	PRICE	SIZE	PRICE
P165/80R13	\$38.95	P215/75R14	\$2.95
P185/80R13	\$2.95	P205/75R15	\$1.95
P185/75R14	\$4.95	P215/75R15	\$4.95
P195/75R14	\$6.95	P225/75R15	\$6.95
P205/75R14	\$8.95	P235/75R15	\$9.95

Price includes mounting on standard wheels

AMERI★LINE USA American Built! Priced Right!

General Ameri★Sprint® \$28.95 P155/80D13

Size	Black SP	WSW SP
800-12	\$28.95	\$26.95
P165/80D13	28.95	30.95
P175/80D13	30.95	31.95
P185/75D14	33.95	37.95
P195/75B14	35.95	37.95
P205/75B14	38.95	40.95
P215/75B14	39.95	41.95
P225/75B14	40.95	42.95
P205/75B15	39.95	41.95
P215/75B15	40.95	42.95
P225/75B15	41.95	43.95
P235/75B15	43.95	45.95
500-15	33.95	35.95
800-16	35.95	37.95

CARL'S GENERAL TIRE Save Time... Phone Ahead! **263-4485** 21 Malunui Ave., Kailua

Sooner or later, you'll own Generals

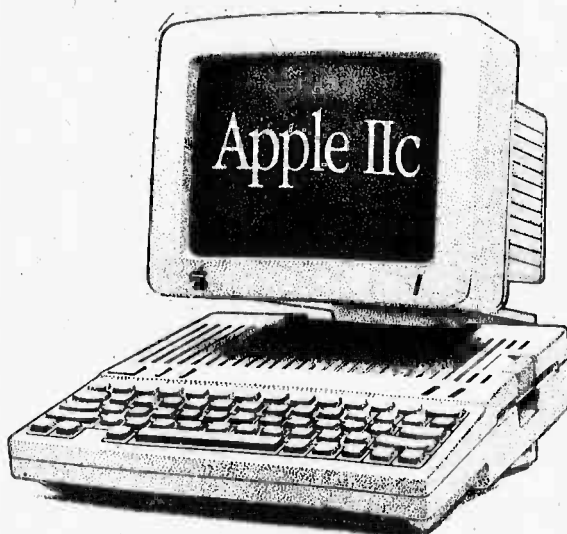
COME IN AND MEET THE **Apple** FAMILY

NAVY
Exchange
PEARL

 **apple computer**
® Authorized Dealer

Apple IIc

The newest edition to the Apple II family. Includes all the most desired features in a contemporary, compact package. Built to fit today's needs — runs over 10,000 programs. Apple II, the most widely used computers in today's educational system.



- 128K
- Built-in Disk drive
- Built-in Expansion
- Tutorial Package and more . . .

Apple Logo

Software Program
(for IIe & IIc)

\$86⁹⁹

NOW
\$899*

Apple Works

Software Program
(for IIe & IIc)

\$199⁹⁹

(*Does not include monitor or stand)

High technology.
Without high anxiety.



- 128K
- Mouse
- Built-in 400K Disk Drive
- High Res Screen
- Word Processing & Graphics Program

NOW ONLY

\$1699

Imagewriter for Macintosh



Enhance your Macintosh with the printer that was designed for it. The Imagewriter. High Speed, High Quality, and Full Graphics.

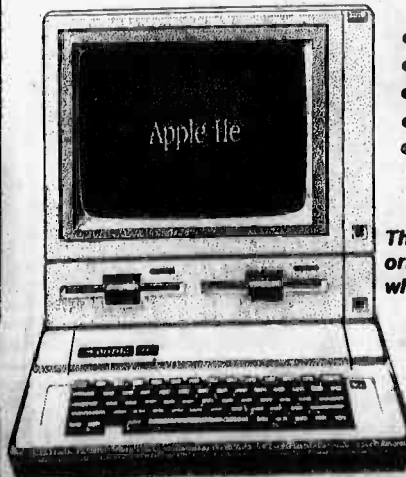
NOW
\$490

Apple IIe Professional System

Pro System Features

- Monitor II
- Duo Disk Drive
- 128K
- Extended 80 Column Card
- PRODOS Operating System

The latest, most powerful, version of the original personal computer. For those who need greater power and expansion.



ALL FOR

\$1555

At a glance

Cont. from A-10

110 pounds, good general health, and no donations given in the past two months. If you've been sick or received medication/innoculations recently, call Ens. R. Demars at 257-2812 to determine if you can be a donor.

MAC travel

Baggage transfers between MAC flights and commercial domestic airlines at civilian airports will begin Dec. 1. Currently, a passenger traveling on a MAC flight to a civilian airport must do his own transferring of baggage to the commercial airline for connecting flights. Beginning next month, 15 major airlines will provide this service automatically and it will work both ways. The airlines participating in the transfer are Aloha, American, Continental, Eastern, Frontier, Ozark, Pan American, Piedmont, Republic, United, USAir, Western, Northwest and Delta.

Passengers wishing their baggage to be transferred should tell the MAC passenger agent at the time of check-in. Passengers must have a ticket showing their confirmed reservation for the commercial airline.

Women's careers

The Federal Women's Program will present on Nov. 27 at 8 a.m. in the Station theater, a two-hour mini-workshop on how to expand your horizons; feel good about yourself; personal growth; and learning how to grow to your



THE GOLDEN THIMBLE
MEN'S & WOMEN'S ALTERATIONS
Monday-Saturday
9 A.M.-5 P.M.
FREE ESTIMATES
PHONE
247-3337

COUPON HILLTOP RANCH



UNGUIDED TRAIL RIDES
BRING THIS COUPON FOR ONE FREE RIDE WITH GROUPS OF 4 OR MORE.
AFTER SCHOOL PROGRAM
8 WEEK SESSIONS
2, 3 OR 5 DAY PROGRAMS
RESERVATIONS:
259-8463

LOW COST DIVORCE

Divorce & Family Law Services
Ray Asasaki & Associates
880 Ala Moana Bldg
545-5755

HAWAII MARINE

Approved Private Pilot Ground School Course on Monday.

This ground training is open to all individuals interested in obtaining aviation training or their Private Pilot's Certificate.

Classes meet on Monday and Wednesday evenings in the Barbers Point Navy Flying Club classroom, building 1868. Course registration fee is \$60. Books and other materials cost approximately \$55.

If interested persons are apprehensive of general aviation, a \$20 half-hour introductory flight is available.

For enrollment, scheduling or additional information contact the Flying Club at 684-8221.

Children's school routes

School children have been taking a short cut through the Motor Transport area, between Cushman and Harris Avenues, or taking the Harris Avenue and Mokapu Road route to get to Mokapu School. Children should reroute their path to use Machachlan Street for their own safety.

fullest potential. Presentations will also be given on how positive thinking helps you grow; how to choose a guidance counselor; what it takes to be happy on the job and in life; and how to take responsibility for who you are and where you are going.

Navy Relief Course

A Navy Relief Course will be held Dec. 5-7 and 10-12 from 8:30 to 11:30 a.m. at the Air Station's Officers Club. Everyone is invited to attend.

Patrician Anderson, a field representative from the Navy Relief Society Headquarters in Arlington, Va., will present subjects including Navy Relief policies and pay and allowances.

Free child care is available at the Drop-Off Center. Reservations can be made by calling 254-1327.

Ground school

The Barbers Point Navy Flying Club will hold its FAA

OBSTETRICS & GYNECOLOGY

Robert C. Allin, M.D.

- Natural Childbirth
- Menopause
- Personalized Care
- Infertility
- Outpatient Sterilization

Participating HMSA, CHAMPUS, MEDICARE
Appointments Both Offices
Kaneohe Honfed Bldg. 247-8737 Kailua Medical Arts

ACCIDENT CASES

INCLUDING WRONGFUL DEATH CLAIMS AND CATASTROPHIC INJURIES

You may qualify if you or any member of your family has been injured.

524-5400

Law Offices of
GARY GALIHER & ASSOCIATES

No Charge For Initial Consultation
No Recovery No Fee

333 Queen Street, Suite 800 Validated Parking

SALE ON NEW TENNIS FASHION WEAR

prince

NEW PRO MID-SIZE \$59.95	UNSTRUNG WOODIE \$109.95
PRO OVERSIZE \$64.95	COMP \$119.95
NEW MAGNESIUM MID-SIZE \$69.95	GRAPHITE \$167.95
MAGNESIUM \$72.95	BORON \$285.95

PRECISION GRAPHITE \$94.95

Wilson

FORCE MID-SIZE \$63.95
STING MID-SIZE \$84.95

HEAD

UNSTRUNG

TOURNAMENT EDGE \$54.95

TOURNAMENT DIRECTOR \$59.95

COMPOSITE GRAPHITE EDGE \$69.95

COMPOSITE DIRECTOR \$79.95

TXE GRAPHITE \$144.95

GRAPHITE DIRECTOR \$149.95

While Supply Lasts Sale ends 11/30/84

PROFESSIONAL Racquet Stringing and Repairs
ONE DAY SERVICE
SUPER SPECIAL on Tennis & Racquetball Bags, Gloves and Accessories
LARRY'S TENNIS HUB
247-3633
Next to Central Pacific Bank
45-1015-A KAM HWY., KANEHOE, HI
HOURS: MON-FRI, 8:30-5 SAT-SUN, 9:30-3

GENERAL ELECTRIC COMPANY Factory Service

WE OFFER THESE SERVICES

- Scheduled Service Mon.-Sat.
- Emergency Service
- Service Contracts
- Step-by-Step Repair Manuals/Parts
- Factory Trained Technicians
- Refrigerator/Freezer
- Washer/Dryer
- Range/Microwave
- Dishwasher/Disposal
- Compactor
- T.V.
- Room Air Conditioner

Service 533-7462
Emergency 533-7462
Parts 538-1141

ALAN

404 Cooke St.
Honolulu, Hawaii 96813

Pali Palms DENTAL GROUP FAMILY DENTISTRY OPEN SATURDAYS AND EVENINGS

Moms, Dads, keikas, tutu wahines... everybody loves Pali Palms Dental Group! Special kids play area stocked with zoo of furry animals. Most modern office in Windward. Tender loving denture care!

- All areas of family dentistry
- Really reasonable fees
- Immediate appointments
- Open daily, nights and Saturdays

We Welcome all Insurance:
■DSSH ■HMSA ■DDS-82
■Dentaguard ■HDS ■All others

Pali Palms Plaza
Next to Yum Yum Tree
970 N. Kalaniana'one Ave. - 1st Floor
Across from Aikahi Shp. Ctr.

Phone
254-1541

LAST WEEK... SEWING MACHINE SALE

These are the final days of this sale, all machines will be sold at PRACTICALLY WHOLESALE COST!

BERNINA • VIKING • RICCAR SINGER • PFAFF

FINAL 4 DAYS SALE ENDS Sun. 11/18/84 p.m.

- ZIG ZAG
- BUTTONHOLE
- MONOGRAM
- OPEN ARM
- FULLY GUARANTEED

This is just "one example" Sale

•STRETCH STITCHES
•BLIND HEM
•TWIN NEEDLE

FREE Machine Instruction w/Purchase

\$169 ~~399~~

PACIFIC SURPLUS DISTRIBUTORS LTD

455-9010
88-100 Kamehameha Hwy. (Next to Robinsons)
PEARL CITY

TAMA'S POLYNESIAN EXPLOSION!

Flashing blades... soft Hawaiian hulas... the drum-beats of Tahiti! The South Pacific excitement of TAMA'S POLYNESIAN EXPLOSION is yours to enjoy Wednesday, Friday or Sunday in the Hale Koa's Banyan Tree Showroom.

Start with a lavish buffet dinner from 6 p.m. to 7:30 p.m., and then at 8 p.m. experience an unforgettable journey through the Pacific in song, dance and the true spirit of Aloha. Just \$11.95 for adults and \$6.50 for children under 12, including show, buffet and gratuity. Tickets on sale at the hotel or at the MCAS Kaneohe Special Services Office.

HALE KOA HOTEL
Armed Forces Recreation Center • Waikiki Beach • 955-0555

Lex Brodie's SELLS BETTER TIRES!

We can prove it!
We have the records!

You Save up to 30% on High Mileage Steel Radial Tires, and with our Full Service Prices, you get Free Mounting, Balancing, Wheel Weights, Valve Stems, Repairs, Rotation, Alignment Checks and Accurate Tire Records. No One has a Better Tire Deal! Yes, Come See Us!

The following tire prices are firm until Sat. November 24. If your size is not listed below, please call us. We can help you.

GOOD! AURORA FIRST QUALITY APPROX. 35,000 MILES* BLACK STEEL RADIALS

TIRE SIZE	NO SERVICE PRICE	FULL SERVICE PRICE
155-12	20.25	35.25
155-13	22.75	37.75
165-13	26.75	41.75
185-14	35.25	50.25
165-15	30.50	45.50
175/70-13	26.25	41.25
185/70-13	31.00	46.00
185/70-14	34.25	49.25

NATIONAL FIRST QUALITY APPROX. 35,000 MILES* WHITEWALL STEEL RADIALS

TIRE SIZE	NO SERVICE PRICE	FULL SERVICE PRICE
175/80-13	39.00	54.00
185/80-13	40.50	55.50
185/75-14	41.25	56.25
195/75-14	43.50	58.50
205/75-14	46.75	61.75
215/75-14	49.00	64.00
225/75-14	51.00	66.00
205/75-15	47.75	62.75
215/75-15	51.75	66.75
225/75-15	53.50	68.50
235/75-15	57.00	72.00

BETTER! TOYO SEMI-PREMIUM QUALITY APPROX. 40,000 MILES* BLACK STEEL RADIALS

TIRE SIZE	NO SERVICE PRICE	FULL SERVICE PRICE
155-12	29.00	44.00
145-13	30.00	45.00
155-13	31.00	46.00
165-13	36.00	51.00
175-13	37.00	52.00
175-14	42.25	57.25
185-14	43.75	58.75
165-15	42.00	57.00

70 SERIES BLACK STEEL STEEL RADIALS

TIRE SIZE	NO SERVICE PRICE	FULL SERVICE PRICE
175/70-13	41.75	56.75
185/70-13	46.75	61.75
185/70-14	49.25	64.25
195/70-14	52.75	67.75

75 SERIES WHITEWALL STEEL RADIALS

TIRE SIZE	NO SERVICE PRICE	FULL SERVICE PRICE
185/80-13	48.50	63.50
175/75-14	47.25	62.25
185/75-14	52.25	67.25
195/75-14	56.50	71.50
205/75-14	60.50	75.50
215/75-14	68.25	83.25
195/75-15	57.50	72.50
205/75-15	62.75	77.75
215/75-15	66.25	81.25
225/75-15	70.00	85.00

MICHELIN BEST!

BECAUSE SO MUCH IS RIDING ON YOUR TIRES

MICHELIN PREMIUM QUALITY APPROX. 50,000 MILES* BLACK STEEL RADIALS

TIRE SIZE	NO SERVICE PRICE	FULL SERVICE PRICE
155-12	41.00	56.00
145-13	36.75	51.75
155-13	44.00	59.00
165-13	51.25	66.25
175-14	61.75	76.75
185-14	67.75	82.75

70 SERIES BLACK STEEL RADIALS

TIRE SIZE	NO SERVICE PRICE	FULL SERVICE PRICE
175/70-13	59.00	74.00
185/70-13	67.00	82.00
185/70-14	73.50	88.50
195/70-14	78.00	93.00

Note: Our No-Service prices for outer island and over-the-counter sales do not include services. Hawaii 4% state tax and air freight charges for shipments to the outer islands must be added. Easy pay plan available. VISA and MasterCard are accepted.

*Lex Brodie Quality Designation
*Mileage expected on smaller cars under average Hawaii driving conditions.

Lex Brodie's TIRE COMPANY

Mon. thru Sat., 8 a.m. to 5 p.m.
WAIPAHU HONOLULU
68-100 Kamehameha Hwy. (Next to Robinsons)
PH. 431-0200



L.Cpl. Kevin Hazlett, SOMS, sprays a CH-46 helicopter with a hose. Goggles are mandatory to avoid eye damage.



Every nook and cranny is a target for these SOMS Marines as they clean a CH-46 at the Air Station's wash rack.



L.Cpl. Gerry Bouska, SOMS, scrubs the top of a CH-46 helicopter. Combating corrosion is a major problem for Hawaii aviation units.

Battling nature's elements

by Sgt. Christopher Wood

It may be the biggest bird bath in the area, but you won't find feathered creatures preening themselves in the Air Station's wash rack.

Located near the flight line, the wash rack is reserved for birds of a different feather — the ones that have jet engines or rotors.

"It's very important to keep our aircraft clean because of corrosion," said SSgt. Vincent Flores, SNCOIC of the wash rack. "Corrosion is the biggest

problem in Hawaii because we're surrounded by water," he said. "Salt is constantly spraying around, and during the rainy season, it practically rains salt water. Unless the squadrons wash their aircraft regularly, they'll have twice as much corrosion."

According to Flores, each squadron sets up a schedule to wash their aircraft. "They send crews to do the washing," Flores said, "which takes from 20-30 minutes per aircraft. They must ensure that each

bird is done at least once every 14 days," he said.

"As supervisors, we ensure that the washing is done properly," Flores continued. "They must wear goggles as the water pressure is pretty high and they could easily get an eye injury."

Proper cleansing of the aircraft is essential. "As they wash them, they inspect the aircraft," Flores remarked. "There are certain areas that they pay particular attention to in some aircraft because different aircraft are corro-

sion-prone in different areas."

Various chemicals are used to combat corrosion, and the hazardous waste those chemicals produce is contained. "We have a tank that catches the residue," Flores remarked. "The water is separated from the grease, oil and other elements which are kept in the tank. The non-pollutants go into the sewage system." So not only is the wash rack the biggest bird bath in the area, it's also the safest and most sanitary.

Head On
inn to BEAUTY

328 Ulukoua St.,
Kailua

Grosvenor Ctr.
737 Bishop St.
Suite 113
Downtown

WENDY MAGOON
(Formerly of Int'l. Haircutter)

Has Now Moved To **HEAD ON**
Phone For Appointment & Holiday Specials
261-9778 or 531-9902

WINDWARD PROGRAM
1984 East-West Center Hawaii International Film Festival

ADMISSION FREE

Hawaii Loa College presents a series of films and film conferences in Windward Oahu as part of this year's Hawaii International Film Festival. Four films will be shown at the Aikahi Theater, and three conferences held at Hawaii Loa College. The festival theme is "When Strangers Meet—Cross Cultural Perspectives from the Humanities." Admission is free to the public.

ADMIT ONE

SCHEDULE OF FILMS
Monday, Dec. 3—8:30 & 9 PM
Tuesday, Dec. 4—8:30 & 9:30 PM
Wednesday, Dec. 5—8:30 & 9 PM
Thursday, Dec. 6—8:30 & 9 PM

Tickets will be distributed on November 17th at Kailua Drive-In, Koko Marina Theaters, Pearlridge Theaters, and the Varsity Theater from 9 AM to 3 PM, or while supplies last. Maximum four tickets per person in any combination.

The first film conference seminar will be held on Nov. 24, 1984, from 9-4 PM at Hawaii Loa College, titled, "Film As A Medium Of Cross Cultural Education."

For information on film conferences, please call 262-4126.

45-045 Kam Hwy., Kaneohe



Come up to Kool.

Kool gives you extra coolness for the most refreshing sensation in smoking.

A sensation beyond the ordinary.



Warning: The Surgeon General Has Determined That Cigarette Smoking Is Dangerous to Your Health.

Salutes

EDITOR'S NOTE: Salutes recognizes individuals for their achievements and exceptional performance and to welcome arrivals to Hawaii. The information is compiled by Unit Information Officers in conjunction with Fleet Home Town News releases submitted to the Joint Public Affairs Office.

1/12 Welcome aboard

PFC C. McRae
PFC R. Woody
LCpl. W. Alvarez
LCpl. J.R. Carreno Jr.
LCpl. E.A. Hinton
LCpl. A.D. Hoggard



Glenn Sambor, Station Marina manager, received a Certificate of Appreciation for his help in boating safety from the Coast Guard Auxiliary. The marina and the Recreation Branch have been instrumental in maintaining safe conditions for boating and other water sports.

LCpl. J.V. LeGrade
GySgt. H.C. Voorhees
2ndLt. D.R. Bernth
2ndLt. S.W. Heinrichs
2ndLt. J.D. Hochstetler
2ndLt. D.C. Lowe
2ndLt. D.W. Schmar II

Meritorious promotion
Sgt. M.A. Sylvia
Navy Achievement Medals
Cpl. J.J. Belschner
Sgt. R.M. Cuellar

Meritorious Masts
LCpl. C.J.H. Barnes
LCpl. D.D. Campbell
LCpl. T.R. Cardoso
LCpl. A.J. Horak
LCpl. A.K. Poog
Cpl. R.J. Long
Cpl. R.J. Ludlow
Sgt. R.K. Chanda
Sgt. R.D. Gibson
Sgt. M.E. Styles

Good Conduct Medals
Cpl. J.R. Urquia
Cpl. M.A. Woolford
Sgt. M.A. Sylvia

**3dAAVBn
Welcome aboard**
PFC N.E. Wilks
LCpl. T.D. Goodin
LCpl. G.N. Piteock

Cpl. C.L. Cloud
Cpl. M.K. Compton
Cpl. R. Pereira
Cpl. A.C. Williams

Promotions
PFC S.R. Gray
LCpl. R.C. Ballard
LCpl. S.K. Boydston
LCpl. D.R. Cline
LCpl. T.M. Delby
Cpl. J.A. Hosmer
Cpl. R. Liendo
Cpl. W.K. Parrish

Letter of Appreciation
LCpl. D.R. Cline

**H&MS-24
Welcome aboard**

LCpl. C.L. Arnold
LCpl. R.M. Cramer
LCpl. B.E. Gilbert
LCpl. M.J. Taylor
Cpl. L.F. Paz
Sgt. J.V. Buttrey
GySgt. D.P. Harris

Promotions
Cpl. P.R. Laliberte
Cpl. S.M. Trumpower
Sgt. L. Hamilton
Sgt. E.S. Schwartz
Sgt. W.C. Watts

Good Conduct Medal
Cpl. T.B. Gasca

MACS-2 Welcome aboard

Pvt. W.L. Walkee
LCpl. M.S. Atkinson
LCpl. D.E. Murdaugh
LCpl. T.C. Shepard
LCpl. W.S. Wright
LCpl. M.E. Wyckoff



John Daniels, Recreation Branch, Special Services, received a Certificate of Appreciation for his help in boating safety from the Coast Guard Auxiliary. The Recreation Branch and the marina have been instrumental in maintaining safe conditions for boating and other water sports.

Cpl. K.W. Jarrett
Cpl. G.H. Klippel
Cpl. R.L. Rowe
Cpl. G.S. Welch

Promotions
LCpl. L.J. Parker
Cpl. D.P. Russell
Meritorious Mast
Sgt. R.A. Coleman

**HMM-265
Welcome aboard**
SSgt. N.C. Bryant
Meritorious Promotions
Sgt. R.F. Lynn

Good Conduct Medal
LCpl. C.T. Friudenberg
Good Conduct Medals
LCpl. C. Gaumont
Cpl. M. Meredith
Sgt. R.F. Lynn

Reenlistments
Sgt. D.M. Caballero
Sgt. P.T. Donovan
**Camp H.M. Smith
Promotions**

LCpl. K.J. Beiszer
LCpl. W.J. Holloway
LCpl. J.A. Howell
LCpl. J.M. Paquette-Spillers
LCpl. J.D. Zang
Cpl. P.D. Kondratowicz

thanksgiving savings

GREMLINS CANDY

Tickle 'em Pink this Christmas.

8 oz. size

ALMOND ROCA

10% OFF

THE ORIGINAL
Carl Buddig

Happy Thanksgiving!!
Special Holiday Savings
on Carl Buddig
Thin Sliced Meats

For Your HOLIDAY BAKING NEEDS

Professor I.M. Nutley, Noted Nutologist

If you're nutty about nuts, Chipper's new Honey Roasted Nuts are especially for you.

12 oz. **SAVE 16¢**

7 oz. **SAVE 25¢**

16 oz. **SAVE 23¢**

10 oz. **SAVE 12¢**

SAVE ON HOLIDAY BAKING WITH THESE BORDEN & COMSTOCK PRODUCTS

Try This Blueberry or Cherry Cheese Pie (Makes 1 pie)

1 (3 oz.) pkg. cream cheese, softened
1 (14-oz.) can Eagle Brand Sweetened Condensed Milk
1/3 RealLemon Reconstituted Lemon Juice

1 teaspoon Vanilla Extract
1 Johnston's Graham Cracker Ready-Crust pie crust
1 (21-oz.) cart. cherry pie filling, chilled

In medium bowl, beat cream cheese until light and fluffy. Gradually beat in sweetened condensed milk. Stir in lemon juice and vanilla. Pour into pie crust. Chill 2 hours. Top with cherry pie filling before serving. Refrigerate leftovers.

Sunshine Krispy Crackers

19¢ OFF

16 oz. Package

Salted or Unsalted

Homemade for the Holidays

For Holiday Cooking and Special Treats, Look For Savings on These Borden Favorites.

PEPPERIDGE FARM

SPECIAL HOLIDAY SAVINGS on PEPPERIDGE FARM STUFFING

8 oz. Corn Bread Stuffing

HAPPY THANKSGIVING

Release a Marine

to drive that tank, man that gun, down that plane

by SSgt. Theresa Anthony

"Taught to be tough, trained for combat, they can't do it chained to a flat top desk. And that's where women came in," according to a 1944 recruiting book.

"For Marine men are fighting men — trained for the front lines of battle. And they are asking women of this country to assume their duties here at home so that those front lines may be filled.

"And to the women who accept their invitations, who wear our uniform, share our trials and triumphs, march with us to victory, your country will be forever grateful," said our 18th Commandant, LtGen. Alexander Vandegriff.

In special recognition of women veterans from all services, President Reagan signed a Congressional Resolution proclaiming Nov. 11-17 National Women Veterans Recognition Week.

The resolution calls for an observance to create greater public awareness and recognition of the contributions of women veterans to express the nation's appreciation for their service; and to inspire more responsive care and service for women veterans.

Eleanor Warner, a veteran from World War II, enlisted in the Marine Corps in 1943. She explained that it wasn't difficult for her to tell her parents that she was joining the service because her mother had served in the Navy during World War I.

"I had been working as a telephone operator for two years since graduating from high school," said Warner. "I admired the fact that my mother had served during the war, and I wanted to support my country. So as soon as I could, I enlisted."

Stationed at MCAS Santa Barbara, Calif. Warner worked as a radio operator. "I enjoyed being a Marine and liked my job," said Warner.

She and 20,000 other women served in the Marine Corps

during World War II, but because they were a part of the Reserve, they were only enrolled for the duration of the war. In 1948, Congress passed the Women's Armed Services Integration Act, authorizing the acceptance of the women into the regular Marine Corps.

Reserve MSgt. Carol Mueller enlisted in the Marine Corps in 1952. Mueller recalls leaving her native Hawaii on a double-decker sea plane enroute to Parris Island, S.C. "It took me 14 hours to fly to Alameda, Calif., and then five days by train to get to Parris Island," said Mueller.

The trip was slow but the pace quickened once she arrived at Parris Island. "Trained by male Drill Instructors, we were kept on our toes," said Mueller. "We had 10 minutes to dress after waking up, make our bunks and be out on the street, ready to begin the day. In order to be on time, a lot of the girls slept in their uniforms, but the training staff caught on and began having bed checks. Little things, like brushing your teeth in bed, saved time," explained Mueller.

Mueller served 15 years on active duty, working in the exchange field. "I learned a great deal about the operation of a business," said Mueller. "I really enjoyed being a Marine but my husband and I wanted a family, and the Marine Corps did not allow pregnant women to remain on active duty at that time," Mueller explained. In 1967, Mueller left the Corps and is now serving with the Reserves.

Today, there are 9,000 women on active duty, and their enthusiasm and "esprit de corps" is just as evident as it was the first women who served some 60 years ago.

"Once a Marine, Always a Marine" remains true as Warner heads to local chapter of the Women Marines Association in Hawaii, and she encourages all women Marines to join.

"Those of us who can meet every two years for a convention. We reminisce, compare notes with the Marines of today, and have fun," said Warner.

For more information concerning the Women Marines Association, write to: WMA Membership Chairman, P.O. Box 86002, Madeira Beach, FL 33738-6002



A fanciful woman Marine was used by Howard Chandler Christie as his model in this World War I recruiting poster.



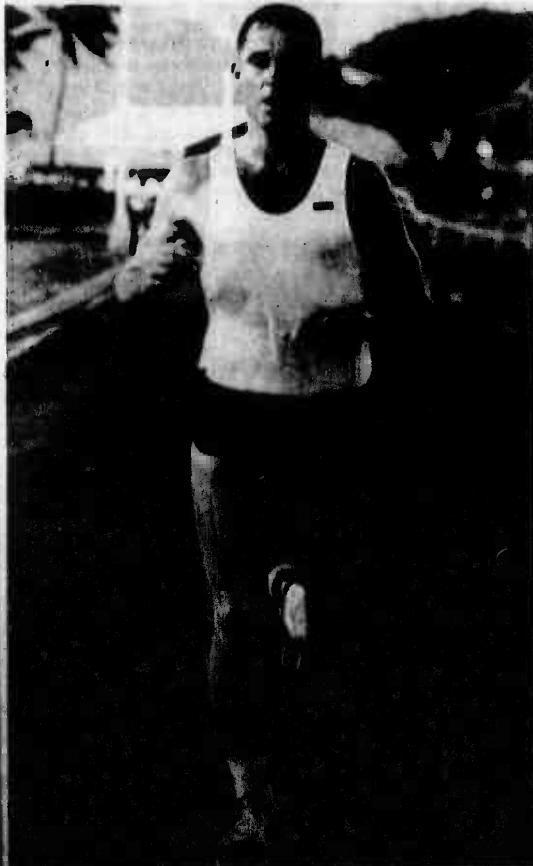
Eleanor Warner, in 1943, in her service greens.



During 1956, MSgt. Carol Mueller was stationed at Camp Smith, Hawaii. In this photo, she is wearing the old style utility uniform which has the rank stenciled on the sleeves.



Eleanor Warner, 1984, "Once a Marine, Always a Marine."



Capt. Dave Dipman, H&HS, approaches the finish line during the 10K Fun Run held at Dewey Square Friday. Dipman crossed the finish line with a 33:36, a full minute ahead of the next finisher.

Marines celebrate with a 10K run

by Cpl. Pat Lewandowski

More than 800 enthusiasts gathered at Dewey Square, Friday, to participate in the annual Marine Corps Birthday 10K Fun Run.

The run, sponsored by Special Services, looped around the

Air Station from the back gate to the runway, and runners of all ages took to the pavement for the challenging 6.2 mile event.

The run, sponsored by Special Services, looped around the

Cont. on B-3



Marines from HqCo, 3d Marines, cross the finish line during the 10K Fun Run. They ran the 6.2 mile race in formation, finishing with every man they started with.

Religious services

MCAS Kaneohe Bay

257-3552/3506
Weekdays
 11:45 a.m. — Catholic Mass
Saturday
 6 p.m. — Catholic Mass
 7 p.m. — Catholic Reconciliations
Sunday
 7:30 a.m. — Catholic Mass
 8:30 a.m. — Protestant Liturgical Communion
 9:30 a.m. — Catholic Mass
 9:30 a.m. — Protestant Sunday School
 10:45 a.m. — Catholic CCD Classes
 11 a.m. — Protestant Worship
 1 p.m. — Samoan Congregation

The Station Chapel is located in the right rear corner of the Marine Corps Exchange, building 1090. Sunday School and CCD are held in the pre-school area, building 1391.

Camp H.M. Smith

477-5098
Sunday
 8 a.m. — Catholic Mass
 9:30 a.m. — Protestant Worship
 9:30 a.m. — Protestant Sunday School
Monday
 11:30 a.m. — Bible Study
Wednesday
 6:45 a.m. — Prayer breakfast

Naval Station Pearl Harbor

471-3971
Weekdays
 11:30 a.m. — Daily Catholic Mass
Saturday
 6 p.m. — Catholic Mass
Sunday
 7:30 and 9:30 a.m. — Catholic Mass
 8:30 a.m. — Protestant Communion Service
 9:30 a.m. — Protestant Sunday School
 11 a.m. — Protestant Worship Service
 7 p.m. — Protestant Gospel Service
Holidays
 11:30 a.m. and 5 p.m. — Catholic Mass

Aloha Jewish Chapel, Pearl Harbor

471-0050
Friday
 8 p.m. — Shabat
Saturday
 9:30 a.m. — Shabat and Torah Study
Sunday
 9 a.m. to noon — Religious School

Tennis

The Tri-Annual Station Tennis Tournament will be held this weekend at the lower courts.
 All active duty personnel interested can sign up at the Gym or call the Athletic Office before 4:30 p.m. Thursday.
 There will be six divisions: novice; intramural; open; Junior Vet, 35-44 yrs; Senior, 45 and over; and women.

Racquetball

The Tri-Annual Racquetball tournament will be held Dec. 1, 2, 8 and 9 in the Station Gym.
 All active duty personnel who want to participate can preregister at the Gym starting Monday.
 There will be five divisions: open, intermediate, novice, senior and women.

Volleyball

A one-day pool play unit Volleyball tournament will be conducted Nov. 25 at the Station Gym.
 Registration will start Monday at the Athletic Office. A coaches meeting will be held Wednesday at noon in the Station Gym.

Softball

A unit Slow-Pitch Softball Tournament will be held Dec. 8 and 9 at Risely Field Complex.
 All teams should preregister with the Athletic Office starting Nov. 26. Entry fee is \$70. Organizational meeting/entry deadline is noon Dec. 5 at the Station Theater.
 Entry fee must be paid at this meeting. All teams will be

-It's No Disguise... Classified advertising gives you facts that you need to make smart buying decisions. There's no puffery that will confuse and mislead. Information is presented in a simple, straightforward form. In a time when buying facts are a consumer necessity, it's nice to know classified is around.
Call 235-5881.

Sports Shorts

guaranteed at least four games.

Golf

The Tri-Annual Station Cat-Fight will be Dec. 14 with a 1 p.m. shot-gun start.
 Entry fee is \$28 per team — \$7 per person — to be paid at Special Services, building 219.
 Entry forms will be available at the Athletic Office, building 219 and the Golf Course starting Nov. 26.
 Deadline is 3:30 p.m. on Dec. 7. Late entries will not be accepted, and the field will be limited to 32 team entries.

Basketball

A meeting for the 1984 Camp H.M. Smith Basketball team will be held on Nov. 29, at 2 p.m. in the library. All active duty military and DoD employees with exchange privileges stationed at Camp Smith are eligible to participate.
 Coaches or team representatives should attend this meeting and should bring team rosters.
 For more information, call Hal at 477-5197.

1984 Intramural Golf Final Standings

Team	Longest Drive Division			Pts
	Wins	Losses	Ties	
H&HS Food Serv.	7	0	1	13½
MACS-2	6	1	1	13
SOMS ATC	4	3	1	9½
H&HS #1	3	2	3	9
3d Marines	3	3	2	8½
1stRadBn #1	3	4	0	6
HqCoBde #1	1	6	1	3½
Supply Co. BSSG	0	5	1	1

Closest to the Pin Division			
MAG-24	6	1	12½
1stRadBn	5	3	10
HMH-463	4	2	9½
H&HS #2	4	2	9
MATCS-18 Det.B	2	3	5
SOMS	2	4	4
Electronics Maint.	1	5	2

1984 Intramural Basketball Standings

A Division		B Division	
1/3	4-0	H&H #1	3-0
HqCoBde	2-1	1stRadBn	3-1
CommSptCo	2-1	BSSG	2-1
1/12	2-1	HMH-463	1-1
Amtracs	1-1	HqCo, 3d Mar	1-2
VMFA-235	0-1	SOMS	1-2
Engineers	0-2	Supply Co, BSSG	1-2
H&HS #2	0-3	MABS-24	0-3

Island bus schedule

Marines requiring transportation on and off the Air Station have an economical mode of travel.

Established by the Air Station's commanding officer, the liberty bus is designed to provide free transportation for active duty personnel to and from Waikiki.

The liberty bus schedule is as follows:

Bus stop	Times			
Joint Reception Center	6 p.m.	8 p.m.	11 p.m.	1 a.m.
Main Exchange	6:05 p.m.	8:05 p.m.	11:05 p.m.	1:05 a.m.
Main gate (ID check)	6:10 p.m.	8:10 p.m.	11:10 p.m.	1:10 a.m.
Aikahi Park	6:15 p.m.	8:15 p.m.	11:15 p.m.	1:15 a.m.
Kailua bus stop (Kailua & Hoolai Sts)	6:25 p.m.	8:25 p.m.	11:25 p.m.	1:25 a.m.
Fort DeRussy (turn around point)	7 p.m.	9 p.m.	midnight	2 a.m.
Kailua bus stop (Oneawa & Uluniu Sts)	7:35 p.m.	9:35 p.m.	12:35 a.m.	2:35 a.m.
Aikahi Park	7:45 p.m.	9:45 p.m.	12:45 a.m.	2:45 a.m.
Main gate (ID check)	7:50 p.m.	9:50 p.m.	12:50 a.m.	2:50 a.m.
Main Exchange	7:55 p.m.	9:55 p.m.	12:55 a.m.	2:55 a.m.
Joint Reception Center	8 p.m.	10 p.m.	1 a.m.	3 a.m.

Adverse weather or road conditions could cause a change to the schedule. In that event, Marines in Waikiki should contact the Military Police Station at Fort DeRussy for information.

NEW 1985 ZENITH Advanced SYSTEM 3 THE SMART SET The Color TV with a Computer Brain!

25" Diagonal ULTRAMODERN STYLING PLUS ZENITH SPACE COMMAND™ 7000
 Into a world of unsurpassed TV performance comes this Advanced System 3 Smart Set in an exquisite console cabinet finished in simulated Rosewood on top and ends. Its Computer Space Command 7000 Remote Control, besides its customary remote control functions, also provides Zenith's newest Parental Control and Playback features, plus Full-Use Dual TV/VCR convenience... and more in Zenith Advanced System 3!

18" Diagonal DUAL SPEAKER SOUND PLUS ZENITH SPACE COMMAND™ 6000
 Four speakers, two on each side, are centered inward for optimum sound-centering. Great remote control convenience too. Use Dual TV/VCR convenience... which even controls Zenith VHS video recorders.

NEW CHROMACOLOR CONTRAST PICTURE TUBE
 Provides a picture with exceptional contrast and extraordinary color fidelity.

Z-TECH CASSIST
 Zenith's most automatic channel selector. So automatic, it assures constant peak performance.

EXCLUSIVE COMPUTER BRAIN
 Maintains color fidelity year after year automatically.

ON-SCREEN CHANNEL NUMBER AND TIME DISPLAY
 Lets you check the number of the channel you are watching... and the time.

NEW FLASHBACK FEATURE
 One touch control for switching back and forth between shows on two different channels (Model SA2541X only of sets shown).

FOUR SPEAKER SOUND SYSTEM
 For rich, dramatic TV sound.

NEW DMR-PLUS
 Allows easy connection of currently available and anticipated developments such as Stereo TV sound adapter, Teletext Decoder and selected Cable TV decoders.

ADVANCED COLOR CENTER
 8 automatic sub-systems work together to correct the color picture, correct it 30 times a second... automatically.

25" Diagonal FAMOUS ZENITH SYSTEM 3 WITH SPACE COMMAND™ 6000
 Charming country-style cabinet in richly-grained Pecan finish featuring Chromacolor Contrast Picture Tube, Electronic Keyboard Tuning featuring 187 Channel capability, and Space Command 2600 to provide all the normal remote control functions besides operating Zenith VHS Video Recorders.

Now at your favorite store or available direct from us.

AVIS SALUTES YOU... WITH EXTRA SPECIAL SAVINGS!

Avis has extra-special rates for retired and active military and civilian personnel. In Hawaii, you can rent a Chevy Chevette or similar subcompact car for just \$19.95 a day. And there's no charge for mileage. In the 48 contiguous states, subcompact cars are available for as low as \$26 a day. Avis also has great low rates on other car groups. Special weekly rates too!

What's more, Avis has set up a special Government Desk just to serve you! And you can call us there on your special toll-free number:

1-800-331-1441

To get your extra-special savings, for personal or official travel, all you need is an Avis or Avis-honored charge card and an Avis Worldwide Discount (AWD) card. (Clip the AWD card below for temporary use; to get a permanent AWD card, fill in and mail the coupon.)

The next time you rent a car, get all the quality and service of Avis, and special military discounts too. Use the temporary card below and send for your permanent card today!



Avis features GM cars. Chevy Chevette.



TRYING HARDER MAKES AVIS SECOND TO NONE.

Clip and carry this temporary Avis Worldwide Discount card. U.S. Government FT (For temporary use only.) AWD # A/A143059

To reserve a car, call the Avis location nearest you or call the new special Government toll-free number:

1-800-331-1441

THIS IS NOT A CREDIT CARD



For a permanent Avis Worldwide Discount card, clip and mail this coupon.

To: Hawaii Sales Department
 Avis Rent A Car System, Inc.
 3001 Nimitz Highway
 Honolulu, HI 96819

Please send me _____ Avis Worldwide Discount card(s).
 Name _____
 Address (or AIN) _____
 AWD # A/A143059

Special rates with no charge for mileage are available only on reservations made at least 30 days in advance of the rental period. In Hawaii, the maximum rental period is 30 days. In the 48 contiguous states, the maximum rental period is 30 days. In the 48 contiguous states, the maximum rental period is 30 days. In the 48 contiguous states, the maximum rental period is 30 days. In the 48 contiguous states, the maximum rental period is 30 days.

10K run

Cont. from B-1

Capt. Dave Dipman, H&HS, broke the tape at 33:36, taking first place.

LCpl. Tim Taylor, BSSG, crossed the finish line second, winning the 23-24-year-old age division with a 34:56.

The next Marine to cross the finish line was Sgt. Arnold Will, 1/3, with 35:07. He captured the top position in the 25-28-year-old division.

The first woman to complete the run was Sgt. Kathy Breen, BSSG, with a 44:27. Close behind Breen was the second woman finisher, LCpl. Dorothy Gavin, MABS-24, with a 44:49. Third place went to SSgt. Kathy Creswell, BSSG, with

47 minutes.

Although she did not enter the women's division, 12-year-old Sonja Hildebrand completed the race with a 45:18. She was the first registered dependent to cross the finish line.

Other winners were Cpl. Scott Whitaker, HMM-265, first in the 20-and-under division at 36:37; and Cpl. Bill Lamie, BSSG, first place in the 21-22-year-old division with a 37:22.

The 30-38-year-old division was won by Capt. Tom Muehleck, BSSG, who posted a 37:30. Maj. Charles Barton, H&HS, led the 39-and-over division with a 35:27.

20-years-and-below: Cpl. Scott Whitaker, HMM-265, 36:37; LCpl. Javier Regalag, 3d Recon. Bn., 37:40; Cpl. Jeffrey Prowse, 1/12, 37:50;

21-22 year-old: Cpl. Bill Lamie, BSSG, 37:22; Cpl. David Shroove Jr., BSSG, 38:12; LCpl. Tim Rutter, 1stKadBn, 38:37;
 23-24 year-old: LCpl. Tim Taylor, BSSG, 34:56; Cpl. Jamie Torres, BSSG, 38:12; Cpl. Gregory Boyd, 1/3, 36:39;
 25-28 division: Sgt. Arnold Will, 1/3, 35:07; SSgt. Robert Fiera, HMM-265, 35:47; Capt. Dave-Williams, VMFA-212, 36:44;
 30-38 division: Capt. Tom Muehleck, BSSG, 37:10; Capt. Rick Nealis, BSSG, 37:53; Maj. John Boulware, HMM-265, 38:34.
 39-and-above division: Maj. Charles Barton, H&GS, 35:27; MSgt. George Hight, S&MS, 39:19; Maj. Ray Bennett, HqColBde, 39:52.



Overall winner, Capt. Dave Dipman, receives his award and congratulations from Col. C.D. Robinson, Station commanding officer.



Sgt. Kathy Breen, first woman finisher with a 44:27, receives her award from Col. C.D. Robinson, station commanding officer.



Sonja Hildebrand makes her final strides as she crosses the finish line at the 10K Fun Run Friday. The 12-year-old finished the race in 45:18, the first dependent to finish the race.



ONE MORE TIME - BY POPULAR DEMAND
ONE DAY ONLY
20%-50% OFF
EVERY RUNNING, RACQUET AND SPORT SHOE IN STOCK
 Saturday, November 17
 Doors Open 8:00 a.m.



HONSPORT
 Division of Oshman's Sporting Goods, Inc.
 • Windward Mall, 247-8733
 • Kailua, 261-9751
 • Pearlridge, 487-1517

Some Stores have All the Fun®

<p>AMF HEAVY HANDS Unique new 2 lb. handles specially designed to exercise the muscles of the upper torso. Reg. 21.99 ... 17.99 3 lb. Weights, Reg. 11.99 ... 9.97 4 lb. Weights, Reg. 15.99 ... 12.97 5 lb. Weights, Reg. 19.99 ... 15.97</p>	<p>MARCY "MONSTER" WEIGHT BENCH 84.97 Reg. 169.99 SAVE 50%</p>	<p>DP Scrambler Racquetball Racquet Made for strength and quickness Reg. 21.99 ... 14.99</p>
<p>BODYTONE ROWER/EXERCISER A rower that allows you to do rowing squats, overhead pulls, bench press, shoulder press and upper torso curls. Reg. 179.99 ... 139.97</p>	<p>Chrome Solid Dumbbells 3 lb. (6 lb. pr.) Reg. 19.99 ... 15.97 5 lb. (10 lb. pr.) Reg. 27.99 ... 22.99 8 lb. (16 lb. pr.) Reg. 38.99 ... 31.97 10 lb. (20 lb. pr.) Reg. 43.99 ... 34.97</p>	<p>Women's Sweats! Crew Neck Shirt, Reg. 14.99 ... 10.99 Drawstring pants, Reg. 14.99 ... 10.99</p>
<p>KAKIKAZE Skateboard Deluxe •Curb hopper •Toeguard •Grab rails. Reg. 89.99 ... 67.99</p>	<p>SUPER BRUTE TABLE TENNIS TABLE Reg. 125.00 ... 99.97 4-Player Table Tennis Set #5000 Reg. 19.99 ... 14.97</p>	<p>INNOVATIVE TIME Water Sports Watch Digital quartz display; stopwatch. Men's and women's. Reg. 39.99 ... 29.99</p>
<p>St. Pierre Horseshoe Set Drop-forged steel horseshoes, steel stakes. Reg. 27.99 ... 21.97</p>	<p>Top-Flite XL Pro Golf Balls Reg. 18.99 ... 15.97</p>	<p>Wilson "Hale Irwin" Personal Golf Set 3 Woods - 8 Irons Reg. 199.99 ... 159.97</p>
<p>LADIES' RUNNING WEAR 100% nylon tricot jog short with key pocket and built-in "liner." Two-tone singlet with poly/cotton mesh with special air circulation weave for maximum dryness and comfort. Reg. 13.00-15.00 10.97</p>	<p>Coyote Golf Bags Nylon bags in assorted styles and colors. 34.99-59.99</p>	

HONSPORT
 Division of Oshman's Sporting Goods
 Use your Visa, American Express or MasterCard
 Prices good thru Nov. 20. While quantities last.

Island Happenings

For kids only

"Kids Fun Day" will take place on Sunday from 10 a.m. to 1 p.m. for children 9 years old and younger. A \$5 entry fee is required for ages 10-15.

For more information contact the Camp U.M. Smith Stables at 486-9649.

Fashion show

The Staff NCO Wives Club will be holding their annual membership drive fashion show at 10 a.m. Monday in the Club.

Admission is free, and Hawaiian wear will be featured. Refreshments will be served.

Those wishing to join the club, but cannot attend our fashion show, may attend any one of the regular meetings held the first Monday of the month at the Staff NCO Club.

All enlisted ranks are welcome. For more information call Joann Molloy at 254-6218.

Teen Activities

There will be a Teen Thanksgiving Dance Saturday at Dependent Recreation, building 1391.

In order for Special Services to sponsor more activities for teens, parents are needed to chaperon. Help your teens by volunteering once a month for scheduled activities.

Concert

Leeward Community College will hold its annual Fall Pops Festival on Tuesday at 7:30 p.m. in the college's theatre.

The concert features classical and contemporary

favorites, highlighted by a tribute to the big band jazz sounds of the 1940's.

Tickets are on sale now at the LCC Box Office, and are \$3 for adults and \$2 for students, senior citizens and military. Tickets are also available at the door on the night of the concert.

The program includes Sousa's "Black Horse Troop," selections from Holtz's "Planets," contemporary hits by Lionel Ritchie and Les Brown: "A Jazz Suite" and "A Broadway Spectacular." For more information call 455-0384.

Youth Athletics

Registration for the 1984-85 Youth Basketball season will be conducted today through Nov. 30, Mon-Fri, 1 to 4 p.m.

Dependent age groups are 8-16 yrs. Cost is \$20 per person.

Dry Flower Arrangement

Learn how to make a woodrose Christmas Wreath on Nov. 28.

Classes are limited. Deadline to register is the Friday prior to class session; cost is \$20 and all materials are supplied.

Aquanastics

Get into shape by getting into the new wave exercise.

Firm up those muscles and tighten up that waist line. Cost is \$2.50 per class.

For more information about Dependent Recreation programs and classes call 257-3501.

Cont. on B-6

self storage
ATTENTION MILITARY PERSONNEL!

NAVY EXCHANGE
TWO LOCATIONS:

THE PUKA
BLDG. 1146
NAS BARBERS POINT
HAWAII
(808) 682-4588

PUKA II
DEFENSE PROPERTY
DISPOSAL SECTION
(Across Pearl City Post Office)
(808) 455-4194

24 HOUR SECURITY
MINI-STORAGE WAREHOUSE
STORAGE FOR YOUR
Furniture • Boat • Motorcycle • Stereo • Car • Household Items, Etc.
ALL ACTIVE AND RETIRED MILITARY WELCOME!

OPEN 10 A.M. - 6 P.M.
Mon. - Sat.
(Closed Sundays)

• Private Low Cost
• Individual Unit Storage
• Many Sizes to Choose From
• Self Service
• Your Lock, Your Key

HOWOT STORAGE SYSTEMS
This Ad Is Not Paid For By Navy Exchange

GRAND OPENING
SPECIAL
A-1 TAILORING SERVICE

Hours:
Mon.-Sat.
9 a.m.-5 p.m.

262-7844
254-4150

clip
20% OFF
clip

Tailoring & Alterations
For Men & Women
With This Coupon
Expires 12/31/84

333
Uluniu St.
Kailua

HOLIDAY SPECIALS
FINE JEWELRY-MANUFACTURER DIRECT

KANEOHE MARINE CORPS EXCHANGE

NOVEMBER 15TH -21ST
LOOK FOR SPECIAL DISPLAYS

EARRINGS • PENDANTS
RINGS & STRANDS
IN:
PEARLS • PINK CORAL
BURMESE JADE • BLACK CORAL

14K CHINESE CHARACTER JEWELRY 福

THIS AD IS NOT PAID FOR BY THE MARINE CORPS EXCHANGE

Windward Enlisted Club presents

A FLOCK OF SEAGULLS

Friday
16 Nov. '84

Show
10:00 P.M.
\$10.00

Doors Open At 7:00 P.M.
All Ranks

"Wishing (If I had a Photograph of You)"
"Space Age Love Song"
"It's Not Me (Talking)"
"I Ran"

H&HS squeaks past HqCo Bde

by SSgt. Dave Smith

The championship game in the 1984 Intramural Flag Football season was played Friday afternoon and the H&HS team emerged victorious.

Headquarters Co., Brigade, was the victim as H&HS put the icing on their playoff winning streak with a 9-8 final score. Quarterback Joe Lovan didn't allow HqCo's defensive unit time to gather their thoughts as he moved H&HS to within three yards of the end zone before he personally took it in. The extra point attempt was deflected.

The HqCo offense waited until their second time around to get on the board. After starting from their own 35-yard line, Kenny Higareda was the eventual receiver of a 15-yard pass from quarterback Darril Taylor for the touchdown; it was Higareda again for the two-point conversion.

It was then that both defenses got tough, giving up nothing to the advances of their opponents.

But it was in the final minutes of the fourth quarter that H&HS began the final drive of the game. Quick passes and short runs to the sidelines allowed a first down and a few plays afterwards. But, as in their earlier playoff game against SOMS, the outcome rested on the size 10 right foot of John Millen.

It was definitely to be the last play of the game as time ran out after the snap, but Millen rose to the occasion and with the finesse of a great pro field goal kicker, he put it squarely through the uprights.

While H&HS won the championship here, they will be joined by the HqCo team in concluding the Hawaii All-Marine Competition at Pearl Harbor this weekend.

Both teams came from behind in the local competition as H&HS beat SOMS, 10-8; Amtracs, 17-16; and 1st RadBn, 20-13. HqCo Bde beat MABS-24, 26-13; H&S BSSG, 17-14 and H&MS-14, 14-9.

In the first round of playoff action, HqCo 3rd Marines was held scoreless by H&S BSSG, who got one touchdown, and MACS-2 lost to Amtracs 21-8. H&MS-24 and 1st RadBn, raked number one and number two respectively, lost their game in the semifinals.

"All teams should be congratulated on the excellent level of

play this year," commented Jerry Price, sports specialist at Special Services. "This has been the closest scoring playoff in years, which demonstrates the keen competitive spirit developed by all teams."



A scrambling Joe Lovan makes for the safety of the sidelines.



Quarterback Joe Lovan, H&HS, throws a short screen pass to one of his receivers.



An H&HS runner moves through HqCo's defensive line.



John Miller puts his foot into it for the field goal and the win despite HqCo's efforts to block it.

FREE!
NAPA HAT
 with this coupon and a minimum \$5.00 purchase during our ...

NEW EVENING HOURS:
MON.-FRI.
6:00 p.m. 9:00 p.m.

Machine Shop Services available.
 Conveniently Located ...

AIEA AUTO PARTS **KAILUA AUTO PARTS**
 98-390 KAM HWY. 119 HEKILI ST.
 488-1936 262-8146

Coupon expires Fri., 11/23/84

ON THE SEVENTH DAY OF CHRISTMAS

Come sing a song of Christmas with us!
Retailers and Advertisers Remember . . .
There Are Only 6 More Weeks Till Christmas!

Call Your Area
SUN PRESS Representative
235-5881

Pre-holiday SALE

40 sq. yds. of Carpets made of DuPont ANTRON nylon for only \$390⁰⁰

NAVY Exchange

Now at Pearl Harbor or Barbers Point Navy Exchanges, you'll SAVE \$248.00 when you purchase 40 sq. yds. of a beautiful Solid Saxony Plush Pile carpet for only \$390.00! You'll also SAVE BIG on custom drapery, no-wax sheet vinyl, horizontal and vertical blinds. You'd better hurry for the best selection because they're priced to sell fast!

40 sq. yds. will cover approximately:

- A small livingroom, diningroom & hallway
- 3 bedrooms
- A large familyroom

DU PONT ANTRON® CARPET SPECIALS!

SOLID SAXONY PLUSH PILE
 Sug. Retail \$638.00
 Get 40 sq. yds. for only **\$390⁰⁰**
 YOU SAVE \$248.00

POPULAR LINT FREE PLUSH
 Sug. Retail \$838.00
 SAVE \$408.00
 Get 40 sq. yds. for only **\$430⁰⁰**

NEW TONE ON TONE SCULPTURE
 Sug. Retail \$958.00
 SAVE \$448.00
 Get 40 sq. yds. for only **\$510⁰⁰**

NEW SAXONY PLUSH PILE
 Sug. Retail \$958.00
 SAVE \$448.00
 Get 40 sq. yds. for only **\$510⁰⁰**

THICK LUXURIOUS SCULPTURE
 Sug. Retail \$1118.00
 SAVE \$498.00
 Get 40 sq. yds. for only **\$620⁰⁰**

ELEGANT VELVET PLUSH
 Sug. Retail \$1358.00
 SAVE \$608.00
 Get 40 sq. yds. for only **\$750⁰⁰**

SUPER THICK VELVET PLUSH
 Sug. Retail \$1838.00
 SAVE \$808.00
 Get 40 sq. yds. for only **\$1,030⁰⁰**

Carpet only. Pad and Installation available.
 Carpet prices based on 40 sq. yds. Your actual price will depend on the quantity purchased.

HORIZONTAL BLINDS SAVE 44%
from manufacturer's suggested retail

VERTICAL BLINDS SAVE 33%
from manufacturer's suggested retail

CUSTOM DRAPERY SAVE 33%
from manufacturer's suggested retail

SHEET VINYL SAVE 25%
from manufacturer's suggested retail. Honolulu stock only.

Save on Carpets of Du Pont Nylon Too!

100% CFN DU PONT PLUSH
 Sug. Retail \$528.00
 SAVE \$228.00
 Get 40 sq. yds. for only **\$310⁰⁰**

TONE ON TONE SAXONY PLUSH
 Sug. Retail \$638.00
 SAVE \$248.00
 Get 40 sq. yds. for only **\$354⁰⁰**

Pearl Harbor Navy Exchange Interiors Plus
 Phone: 422-2767
 Regular Store Hours: Mon-Sat 9:30 am to 7:00 pm Sunday 9:30 am to 5:30 pm

Barbers Point Navy Exchange Rainbow Annex Furniture Store Bldg. 1141
 Phone: 682-5525
 Regular Store Hours: Mon-Fri 10:00 am to 5:00 pm Saturday 10:00 am to 4:00 pm Sunday closed

NAVY Exchange PEARL

NAVY Exchange BARBERS PT.

Visa and Mastercard accepted
 Sorry no layaways

Sale starts November 1, 1984
 Sales ends November 18, 1984

This ad was not paid for by the Navy Exchange

Island Happenings

Cont. from B-4

Handmade goodies

A Christmas Boutique, presented by the Naval Dental Wives Club, will be held Saturday at 279 Aikahi Place, Aikahi Park, Kailua.

Stained glass, baked goods, calligraphy, ornaments, stitchery, macrame dolls, wooden items, ribbon wreaths and corn husk and eucalyptus wreaths are among the items featured.

For more information call Teresa Pugh at 262-2069.

Auto show

The Honolulu Motorama speed and custom car show has been set for the Blaisdell Exhibition Hall Dec. 7, 8 and 9.

Featured will be specialty vehicles from the mainland and Hawaii. Show hours are Dec. 7 from 6 to midnight; Dec. 8, noon to midnight; and Dec. 9, noon to 10 p.m.

Tickets are \$3.50 for adults and \$2 for children ages 5 to 12, and are available at the NBC Exhibition Hall box office.

For more information, contact Vince McAngus at 395-9725 or Lewis Blanchard at 262-0379.

Toy-making workshop

Learn how to make your own inexpensive and creative toys at "Homemade Toys for Young Children," a workshop sponsored by the Pearl Harbor Family Service Center on Nov. 30, from 9 to 11 a.m. in the Pearl Harbor Chapel Fellowship Hall.

Bring your own scissors and plan to make at least one toy for Christmas. Babysitting will be available for 75¢ per hour per child.

For more information and to register call 474-1256.

5¢ PITCHER OF BEER!
 With The Purchase Of One Pitcher At Regular Price
EVERY SUN. THRU THURS. — DAY OR NITE
 OPEN 11 AM — 2 AM
CHER'S BUNKHOUSE
 Waimanalo Shopping Center
 Entertainment with **DONNA WHITE & THE HIRED HANDS**
EVERY FRI. & SAT. 9 PM - 1 AM
 Bring This Coupon!

FINAL DAYS... MICROWAVE OVEN SALE

THESE ARE THE LAST DAYS OF THIS INCREDIBLE SALE. ALL OVENS ARE REDUCED AT PRACTICALLY WHOLESALE COST. SALE ENDS SUN. 11/18/5 p.m.

INDIVIDUAL FEATURES INCLUDE:
 ROTOWAVES
 CAROUSELS
 DIGITALS
 PROBES

VALUES TO \$498
\$236
 Limit 2 per customer

FREE!
 cookbook with oven purchase

WE GUARANTEE
 The lowest prices in Hawaii including all Military Exchange outlets!

SELECT FROM EITHER:
PANASONIC
TAPPAN
AMANA
LITTON

DIGITAL W/BROWNER & PROBE
497
 Sug. Retail \$698

COMPACT OVEN
166
 Sug. Retail \$348

PACIFIC SURPLUS & DISTRIBUTORS LTD.
 MON. THRU FRI. 9:30-6 p.m. 262-8131
 SATURDAY 9:30-5:00 p.m. 1247-F KAILUA RD. KAILUA
 SUNDAY 11:00-5:00 p.m. 98-553 KAM HWY. PEARL CITY
 WEDNESDAY CLOSED

7 ELEVEN
We Save You More Than Time
 ALL SPECIALS EFFECTIVE NOW THRU NOVEMBER 18, 1984
 All items plus tax, while supply lasts.

OPEN 24 HOURS EVERYDAY!

CIGARETTES
 All Brands & Sizes
9 29
 Carton
 EVERYDAY LOW PRICE

HOT DOGS
FREE!
CHILI & CHEESE
99¢
 Reg. Size
 2 FOR

PILSENER BRAU
PACK BEER
3 89
 12 oz. cans
 EVERYDAY LOW PRICE

LOVES FRUIT
APPLE
CHERRY
99¢
 2 FOR

EVERYDAY LOW PRICE

GALLON MILK
VIVA 2% OR HOMOGENIZED
 2½ Gallon package
3 25
 EVERYDAY LOW PRICE

EVERYDAY LOW PRICE

EVERYDAY LOW PRICE

*except Walkiki
 Competitive Prices on Gasoline 24 Hours Everyday at Selected 7-Eleven Stores
 All items plus tax, while supply lasts.

7 ELEVEN

GIVE US YOUR KODAK FILM... WE'LL GIVE YOU A DEAL!

On KODAK Processing

17 November - 1 December, 1984

Submit your Kodacolor film with the coupon below and we'll give you our special low prices on developing and printing of your KODACOLOR Film by Kodak. Hurry, this offer applies only to orders submitted within the sale dates!

Kodak... Serving the Military Worldwide

Ask for **Kodak**

This advertisement was neither paid for, nor sponsored in whole or in part, by the Exchange Service.
 *Eastman Kodak Company, 1984

COUPON EXCHANGE SPECIAL — from Kodak

Submit this coupon with your exposed KODACOLOR Film and save on developing and printing. Hurry, this offer applies only to orders submitted within the sale dates!

SPECIAL
 17 November - 1 December, 1984

100' 35mm	\$ 4.70	1.50
100' 35mm	5.51	1.70
200' 35mm	7.94	2.44
300' 35mm	11.18	3.50

Special Services

Tickets

The Special Services Ticket Sales Office has tickets for the following events:

Wrestling, Polynesian Championship — Nov. 14, NBC; ringside seat \$7; risers, \$6; general admission, \$5; children, \$4.

Kenny Loggins — Nov. 15, NBC; \$14.50.

A Flock of Seagulls — Nov. 17; General admission \$13.50; held at the Andrews Amphitheater.

Dan Fogelberg — Nov. 21, Waikiki shell; \$12.50 for reserved seat; \$10.50 general admission.

Hawaii State Professional Championship Rodeo — Nov. 24 and 25; adults, \$7.50; children, \$4.50; and family, \$14.50.

Rush — Nov. 24, NBC; \$15.50.

Ronnie James Dio — Dec. 2, NBC; \$14.50.

Aloha Bowl — Jan. 5; for the 40 and 50-yard line seats, Orange and Blue sections; \$10.

Castle Park Gift Certificates — For two people, all rides and activities up to 6 p.m., \$14.50.

The Ticket Sales Office is located in building 219, next to the Station Theater. Call 257-3520/3108 for more information.

Rodeo finals

The Hawaii State Professional Championship Rodeo Finals are scheduled for Nov. 24 at 1:30 and 7 p.m., and Nov. 25 at 1:30 p.m. at the New Town and Country Stables in Waimanalo.

A family ticket (which admits mother, father and children; or three adults; or five children) is available for \$14.50. The family ticket will not be available at the gate and is available by pre-sale

only. Adult tickets are \$7.50; children's, 4 to 12 years old are \$4.50; and children under 4 years old are admitted free. Tickets are available through Special Services, building 219. For more information call Special Services, 257-3520/3108 or Sgt. Maj. McGuirk at 257-3625.

Movies

Movie Schedule for the Week of Nov. 15-21
Movies start daily at 7:15 p.m. For more information call 257-3668.

Tonight

Unfaithfully Yours — (PG) — Dudley Moore. A renowned and temperamental symphony conductor becomes convinced that his wife has been cheating on him. He fantasizes three means of revenge while conducting three different works. Later, as

he follows through each plot scheme he bumbles everything.

Friday

Running Hot — (R) — Eric Stoltz. A teenager convicted in the shotgun slaying of his father seeks refuge with a compassionate and somewhat eccentric masseuse.

Saturday

Stroker Ace — (PG) — Burt Reynolds. Burt is a flamboyant stock car competitor whose finesse behind the wheel is overshadowed by his high-spirited behavior. When he loses financial backing, he is forced into promoting a chicken franchise.

Sunday

The Golden Seal — (PG) — Steve Railsback. A young boy in the Aleutians finds a rare golden seal. He protects it from fur hunters who can get top dollar for the unusual color fur.

Monday

Cloak and Dagger — (PG) — Henry Thomas. A young

boy stumbles onto a real-life plot involving enemy agents trying to sneak military secrets out of the country in the video cassette game Cloak and Dagger.

Tuesday

Trading Places — (R) — Eddie Murphy. An argument between two tycoons causes a snooty commodity trader to be thrown out on the street penniless and destitute.

Wednesday

The Philadelphia Experiment — (PG) — Michael Pare. It's 1943 and a secret radar experiment involving the crew of an American warship is about to go awry, throwing two horrified, young seamen 41 years into the future to the year 1984.

Recreation Housing

The Special Services Beach Cottage has rental units that have a great view, are fully furnished and cost \$16 a day. Call 257-2080 for more information on these vacation cottages.

Child Care

There will be a parent advisory meeting Nov. 29 at 5:15 p.m. at the Child Care Center, building 579.

All Child Care Center patrons are encouraged to attend. Input will be greatly appreciated.

For more information call 257-2608.

Cont. on B-8

WAIKIKI 3
Kailua Bay, Seaside
923-5353

DAILY SHOWS AT:
12:45-2:45-4:45-6:45-8:45-10:45

KNTEK FULL DIMENSIONAL SOUND!

ALSO SHOWING AT KAILUA D.I.

OH, GOD! YOU DEVIL

That's funny, they both look like George Burns.



GEORGE BURNS
"OH, GOD! YOU DEVIL"
Directed by PAUL BOGART

KDEO

COUNTRY RADIO

TOP 10 COUNTRY SONGS

NOVEMBER 11, 1984

LAST WEEK	THIS WEEK	TITLE	ARTIST
1	1	Chance Of Lovin' You	Earl Thomas Conley
2	2	You Could Have Heard A Heart Break	Johnny Lee
3	3	Nobody Loves Me Like You Do	Anne Murray
4	4	Your Heart's Not In It	Janie Fricke
10	5	Too Good To Stop Now	Mickey Gilley
11	6	She's My Rock	George Jones
7	7	Prisoner Of The Highway	Honnie Milsap
8	8	Maggie's Dream	Don Williams
13	9	Why Not Me	The Judds
5	10	Fools Gold	Lee Greenwood

Hear the Top Country Songs in the Nation on the WEEKLY COUNTRY MUSIC COUNTDOWN SUNDAY MORNINGS at 9 A.M. on AM94 at KDEO Country Radio.

HAWAII'S BIGGEST USED FURNITURE LIQUIDATION EVER

HAPPENING NOW!

Two major hotel renovations offer you quality used furnishings at bargain prices!

desk-dresser	89.00
mirror	12.00
nightstand	29.00
headboards	12.00
rattan occ. chair	45.00
rattan side chair	29.00
floor lamps	19.00
table lamps	15.00-39.00
lanai chairs	15.00-29.00
lanai occ. tables	10.00
twin bed	39.00
queen bed	59.00
bedspreads	14.00-19.00
drapery panel	12.00-18.00
carpet approx. 11x17	22.00
48x60 mirror	65.00

INTERISLAND FURNITURE, CO.

717 Moowaa Street
Back of Kapaemahu Shopping Center
CALL 847-1361 FOR DETAILS Monday thru Saturday 9 a.m.-5 p.m.

David Clayton Thomas

Thursday, Nov. 15, 1984

2 BIG SHOWS
ALL RANKS

\$5.00 at the door
DOORS OPEN AT 6 P.M.
SHOWTIMES: 7:30 P.M.

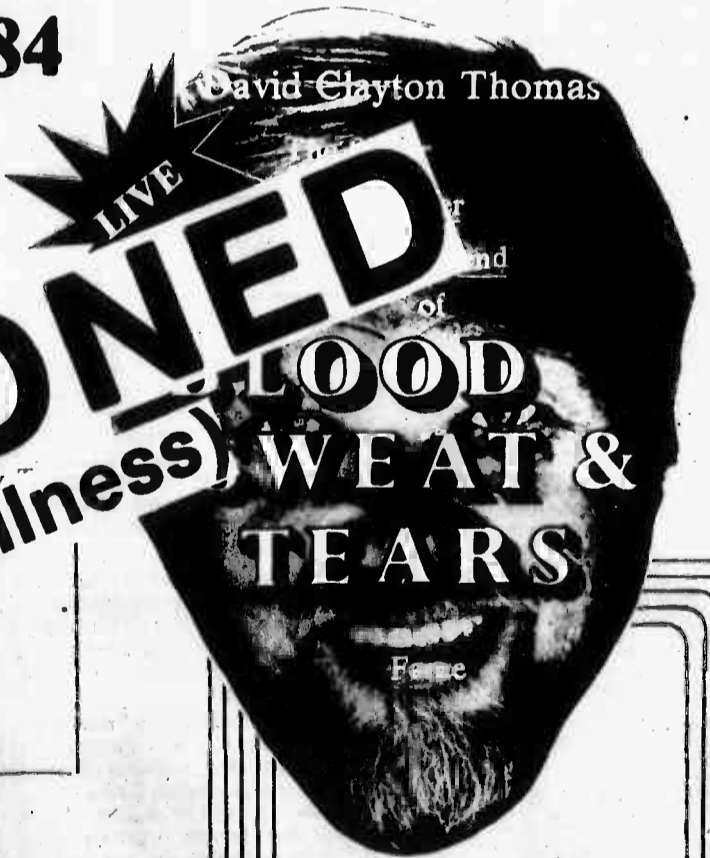
OVER TEN MILLION

POSTPONED

(Due to illness)

AWARD
Five
Male Vocalist
Group of the Year
A's Entertainer of the Year
S.M.I.'s Special Achievement
No. 1 Playboy Reader's Award

David Clayton Thomas



Windward

Enlisted Club

KMCAS

Special Services

Cont. from B-7

Crossbow Class

Sign up now for the last crossbow class before Christmas. Students can make a Hawaiian Koa Crossbow. The cost is \$70 and includes all instructions and materials.

The "Jayhawk" crossbow, of grained Hawaiian Koa stock with inlaid metal runners, aluminum alloy bow and a 650-lb test bow string, cost \$70 and includes all instructions and materials.

Classes meet Dec. 7 from 6-8 p.m. and Dec. 8 and 9 from 9 to 11 a.m.

There will be a special program for children ages 9 to 15 Dec. 6 from 3 to 5 p.m.

Auto Hobby Shop

On Nov. 29, a Ladies Basic Automotive class will meet from 5 to 7 p.m.

The class is free and is designed to help wives of deployed Marines maintain their automobiles and save money on expensive repair bills.

For more information call 257-2983.

Marina

Two new programs starting at the Marina, on a trial basis.

Diet Pili Sweeping U.S.

New Grapefruit Super Pill' Gives Fast Weight Loss

No Dieting - Eat All You Want Pili Does All the Work

BEVERLY HILLS, CA. (Special)—An amazing new "super" grapefruit pill has recently been developed and perfected that reportedly "guarantees" that you will easily lose a least 10 pounds in 10 days. Best of all, it allows you to "eat as much as you want of your favorite foods and still lose a pound a day or more starting from the very first day until you achieve the ideal weight and figure you desire."

This "super" grapefruit pill is a dramatically improved version of the world famous grapefruit diet. It is far more effective than the original and eliminates "the mess, fuss, and high cost of eating half a fresh grapefruit at every meal."

"Pili Does All the Work" According to the manufacturer, "the pill itself does all the work while you quickly lose weight with NO starvation "diet menus" to follow, NO calorie counting, NO exercise, and NO hunger pangs." It is 100% safe. You simply take the pill with a glass of water before each meal and the amazing combination of powerful ingredients are so effective they take over and you start losing weight immediately.

Pili Has ALL Daily Vitamins The powerful and unique combination of ingredients are what make this a "super-pill". It contains highly potent grapefruit concentrate and a diuretic to help eliminate bloat and puffiness. No need to take any vitamins to maintain your good health and energy. The pill is fortified with ALL (100%) of the U.S. Government daily vitamin requirements.

Contains Japanese 'Glucosmannan' Each pill also contains an amazingly effective amount of "glucosmannan", the remarkable natural dietary fiber discovery from Japan (used successfully for over 1500 years) that expands in your stomach and gives you a full and satisfied feeling all day long.

The super-pill is already sweeping the country with glowing reports of easy and fast weight loss from formerly overweight people in all walks of life who are now slim, trim, and attractive again.

Now Available to Public

You can order your supply of these highly successful "super" grapefruit pills (now available directly from the manufacturer by mail order only) by sending \$12 for a 14-day supply (or \$20 for a 30-day supply, or \$35 for a 60-day supply) cash, check, or money order to: Citrus Industries, 9903 Santa Monica Bl., Dept. W42, Beverly Hills, Calif. 90212. (Unconditional money-back guarantee if not satisfied.) Visa, MasterCard, and AmEx. Express OK. (Shipping, expiration date, and other details on Citrus Industries.)

HAWAII MARINE

Many foreign countries, as well as the U.S., require special time qualifications for rabies vaccinations. The Zoonosis Clinic can assist you. Call 257-3643 for more information.

Zoonosis Clinic

Animal Health Certificates are valid for only 10 days and are required for all air travel of pets.

are Open Ocean Sailing and Overnight Sailboat Rentals. Patrons wishing to take advantage of these new programs must have sailboat licenses and will be required to take a short checkout class. An advanced Sailing Class will start in January. For more information call the Marina at 257-2219.

Drop-in care

Do you have medical appointments, shopping

MILITARY ROLLS, RUGS, REMNANTS

CARPET YOUR QUARTERS **\$85.00** DOWN AND **\$21.95** PER MONTH O.A.C. DUPONT NYLON PULSH PILE CARPET, 3/4" FOAM CUSHION AND INSTALLATION

FREE DRAWING WIN A 450^{sq} AREA RUG 12x10'6" FREE

NO PURCHASE NEC. JUST COME IN AND REGISTER

FREE ESTIMATES

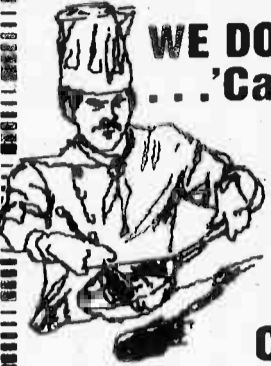
*BASED ON 48.6% S/V CARPET, CUSHION, AND INSTALLATION 30 PAYMENTS 21st TOTAL 656^{sq} A.P.R. 26%

Bill Bohart's CARPET 834-1456

HOURS M-F 9:00-5:00 SAT 9:00-4:00 SUN. 12:00-4:00

970 Ahua Street (across from Gibsons)

To Our Many Happy Carpet Customers, We Say... "Thank You!"



WE DO PARTIES BETTER! ... 'Cause We're Professional!

Catering and Food Service! To Your Home or Barracks... No party Too Big or Too Small!

for more Information, Call 257-2657/257-2873

Mr. Keith Ward or Mr. Tim McDonald

WINDWARD ENLISTED CLUB KMGAS

FLY DELTA FROM CALIFORNIA TO OVER 80 U.S. CITIES. YOU'LL ENJOY THE DIFFERENCE!

Delta has nonstops, thru-jets and other service from both Los Angeles and San Francisco to cities across the U.S.

Delta fans out from Los Angeles with flights to cities in the South, Midwest and Northeast. Fly nonstop to Atlanta, Cincinnati, Dallas/Ft. Worth, New Orleans or San Francisco. Or straight through to New York, Washington, Cleveland, Raleigh/Durham, Shreveport, Ft. Lauderdale, Tampa/St. Pete, West Palm Beach, Orlando (home of EPCOT Center/Walt Disney World) or San Juan.

From Ontario fly Delta nonstop to San Diego, Atlanta or Dallas/Ft. Worth. Or through to New York's LaGuardia Airport, Boston, Cincinnati or Baton Rouge.

From Delta's San Francisco hub, we've also got flights to cities nationwide. Nonstops to Atlanta, Cincinnati, Dallas/Ft. Worth and Los Angeles. Straight through to New Orleans, Orlando, Boston and New York's LaGuardia.

Enjoy the extra comfort of Delta's Wide-Ride Superjets. Delta flies the TriStar to most of the cities we serve with nonstops from L.A. and San Francisco. And many of our thru-jets are TriStars. From Ontario, our great new Wide-Ride Boeing 787s fly nonstop to both Atlanta and San Diego.



Save up to 50% with Supreme Super Saver Fares. You and your family can save up to half of the regular Day Tourist Fare with Supreme Super Saver Fares. Seats are limited, and there are special requirements. So book your reservations as early as possible.

Or save 25% off with our special Military Fare. No advance purchase requirements. You don't fly stand-by. You can get on any flight, at any time, that has available space.

Check your on-base Scheduled Airline Ticket Office (SATO) or Delta for further details and current fares. All schedules are subject to change without notice.

Starting December 14 DELTA WILL FLY NON-STOP FROM HONOLULU TO DALLAS/FT. WORTH, THROUGH TO ATLANTA. Leave any evening at 6:40pm and arrive the next morning.



THAT'S THE DELTA SPIRIT™



Also
available in
soft pack.

New
crush-proof
box.

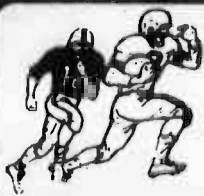
MERIT

A world of flavor in a low tar.

Warning: The Surgeon General Has Determined
That Cigarette Smoking Is Dangerous to Your Health.

8 mg "tar," 0.6 mg nicotine av. per cigarette, by FTC method.

© Philip Morris Inc. 1984



Only On The Goal Line Will You Get More Action Than A Classified Ad Brings.

235-5881 or 622-3966 To Place Your Classified Ad Today!



CLASSIFIED INDEX table listing various categories and their corresponding page numbers.

15 ANNOUNCEMENTS PENNY STOCKS Offers great investments and opportunity...

35 PERSONAL SERVICES FELIPE Yard and Housecleaning. Call 261-5050...

45 SCHOOLS & TRAINING PIANO Lessons by teacher in Hawaii Kai...

80 HELP WANTED M/F WOMEN in Community Service: part time, good stipend position...

83 SITUATIONS WANTED M/F EXPERIENCED childcare available for your children...

88 GARAGE/LANAI SALES WAREHOUSE Garage Sale! Sat. 11/17, 8 a.m. to 2 p.m.

86 HOBBY & CRAFT SUPPLIES "WHERE'S the beef jerky?" recipe \$2. JC c/o Sun Press...

88 GARAGE/LANAI SALES CARs, couch, chest 5 cu refriger, silver rocker...

6th Annual HOLIDAY BOUTIQUE Nov. 15, 16, 17 Thurs. 5-9 Fri. 9-5 Sat. 9-3

SPARKLE in your CHRISTMAS PARTY Live music, Hula Dances or Shows...

WINDWARD (and LEeward) RESUMES, ETC. PERSONALIZED WRITING 261-7524

Dorothy Hazzard Resumes & Business Writing 947-8422

GOOD opportunity for military retiree with telephone or electronic exp...

ATTENDANT 11 to 7 a.m. shift also 2 attendant loaders. Apply at Luaniho Home...

HOUSECLEANERS wanted, must be dependable and have a car. Call Rhonda 263-4575

WILTON cake decorator Care Bears, Smurfs (etc), Strawberry Shortcake...

HOUSEKEEPER Need honest reliable thorough person for weekly cleaning...

DISPATCHER Secretary Post Control & Planning Company needs person to answer phones...

20 LOST & FOUND FOUND: 2 year female dog, mixed, black w/brown paws...

HOUSECLEANING Windward side, Kaneohe, KMCAS Call Debbie 239-7130

GOVERNMENT JOBS \$1,930-\$80,920/yr. For Directory call 805-687-6000 Ext. 41-0000

HAIR Stylist wanted in one of Oahu's finest modern hair salons...

TAILOR For Men's & Women's Clothes Alterations Full-time & Part-time...

WAIHAWA/MILILANI PART-TIME RECEPTIONIST/OFFICE MANAGER Immediate opening for responsible individual...

DISPATCHER Secretary Post Control & Planning Company needs person to answer phones...

HOUSEKEEPER Need honest reliable thorough person for weekly cleaning...

DISPATCHER Secretary Post Control & Planning Company needs person to answer phones...

25 PERSONALS FREE ride. Need rider/drivers from Hawaii Kai to Kaimuki...

IT MAY NOT cost as much as you think to remodel or add on to your home! Call today for a free estimate...

HOUSEWIVES FOR HIRE Quality housekeepers for quality homes. Ext. refs. Call Doreen at 237-8659

HOUSEKEEPER Need honest reliable thorough person for weekly cleaning...

DISPATCHER Secretary Post Control & Planning Company needs person to answer phones...

HOUSEKEEPER Need honest reliable thorough person for weekly cleaning...

DISPATCHER Secretary Post Control & Planning Company needs person to answer phones...

HOUSEKEEPER Need honest reliable thorough person for weekly cleaning...

DISPATCHER Secretary Post Control & Planning Company needs person to answer phones...

35 PERSONAL SERVICES ARTHUR Brickwood & Associates, General Contractors for (49C-4258) Specializing in new homes...

FREE PREGNANCY TEST Open 5 days a week Monday-Friday 10 a.m.-2 p.m. No Appointment Necessary Ph. 262-2171

CLASSIFIED ADVERTISING RATES & REGULATIONS Your classified ad reaches over 124,940 homes each Thursday...

CLASSIFIED LINE ADS Deadline Tuesday 10:00 a.m. \$1.00 per line - tax 3 line min. Ad will appear in the SUN PRESS, Waianae Sun NEWS, Hawaii Navy News, Sun Flyer & Hawaii Marine & Waianae Sun Times (by 12 noon)

CLASSIFIED DISPLAY Deadline Friday 5 p.m. Call 235-5881 or 622-3966 for information on open & contract rates

REPORT ERRORS AT ONCE Corrections and cancellations deadline Monday - 12:00 noon

SELL IT! Through Classified Advertising RFD Public letters will not be returned for items that are not classified. Individual or only classified advertisements and notices who only list their name or initials in the ad that appears incorrectly.

REPORT ERRORS AT ONCE Corrections and cancellations deadline Monday - 12:00 noon

SELL IT! Through Classified Advertising RFD Public letters will not be returned for items that are not classified. Individual or only classified advertisements and notices who only list their name or initials in the ad that appears incorrectly.

A Unique Christmas Gift SEND A VIDEO CHRISTMAS CARD All the color, sounds and action of you and your family expressing a Hawaiian Christmas greeting to relatives and friends...

One Man's Junk Is Another Man's Treasure! Advertise your "treasure" to place your ad call 235-5881 or 622-3966

Mililani & Pearl City Openings for Area Advisor Challenging, highly visible part-time positions for independent self-starters...

WAIHAWA/MILILANI PART-TIME RECEPTIONIST/OFFICE MANAGER Immediate opening for responsible individual with typing and spelling skills...

PART-TIME ACCOUNTING CLERK 25-35 Hours Per Week Duties include: Accounts Receivable Answering Phone, Coordinating Accounting Data In Office.

NEWS ASSISTANT We're seeking a dedicated, hardworking and enthusiastic person to join our award-winning news staff as a news assistant...

E' HANA LIMA (Working Hands) CHRISTMAS ARTS & CRAFTS FAIR (50 Original Displays) Nov. 16 & 17 10 a.m. to 5 p.m. Aikahi Park Shopping Center

SHEARPOWER hairstyling for men & women HOLIDAY SPECIALS NOW OPEN 7 DAYS A WEEK! Shampoo Cut Condition Blowdry ALL FOR ... \$12.50

WRITE A BEST SELLER It Only Takes A Few Minutes Your classified ad in the SUN PRESS could be the biggest seller you'll ever write...

68 GARAGE/LANAI SALES

PUBLIC Auction - Kailua Holiday Mart, Sat. Nov. 17th at 10:00 a.m. Furniture, clothes, hardware, tools, toys. Gift Certificates, household items, plants, Hula and Pro Bowl tickets. Sponsored by Koolaukopo Lions Club. All proceeds to Community Service Projects.

HOLIDAY CRAFT BOUTIQUE

Santas, Wreaths, Ornaments & Toys. Sat. 9 to 4. 573 Uluhaku St., Kailua.

69 GARAGE/LANAI SALES

GARAGE sale: Sat. Nov. 17, 9-3. 2178 Hancock, KMCAS. TV, desk, end tables, clothing, toys, etc.

70 CONDOS/TOWNHOUSES PART. FURN.

3 BEDROOM 1 1/2 bath. Immaculate, \$575, avail. now. 688-2355 days, 696-4190 evens.

71 COMPUTERS

COMMODORE 64 w/1541 disc drive \$435; Vicmodem 25 and other accessories. 499-2637

72 FURNITURE

EXTRA holiday discount on FINE FURNITURE for every room in your home! Save 30%-55% Off retail on all stock. Select one of 17 different china cabinets before 11/21 and save 10% Off the already low discount price.

73 MISCELLANEOUS

STORAGE Cabinet, wood 36" x 18" x 24" \$75. Versatile! Call 456-3222

74 MISCELLANEOUS

GIFT checks \$7.50% goes to Kaiser Computer Fund. Great Xmas Gift. 395-0359

75 MISCELLANEOUS

ANTIQUE wall clocks \$750-\$1650; 5 dresses; cam. 84 software \$10-115. 395-0359

76 MISCELLANEOUS

CHRISTMAS Craft Fair Sun. Nov. 18, 9 to 2 p.m. 1662 Kuahaka St., Pearl City

77 MISCELLANEOUS

RARE odds & ends items. Cheap Sat. Nov. 17, 10 a.m. on 283 Kakaheka St., Kailua

78 MISCELLANEOUS

SAT 11/17, 8-11 lamps, furniture, TV, etc., 395 Auwinala Rd., Kailua

79 MISCELLANEOUS

THREE Family garage sale from 9 a.m. to 2 p.m. Sunday at 2558-A Manning St., Kailua.

80 MISCELLANEOUS

MOVING low rates, honest estimates, no damage, fast & professional. Call 734-4489.

81 MISCELLANEOUS

DISCOUNT MOVING low rates, honest estimates, no damage, fast & professional. Call 734-4489.

82 MISCELLANEOUS

APTS. RENT Mart has all areas, sizes, prices. 943-0092 till 8 p.m. Open Sun. too! Fee.

83 MISCELLANEOUS

MAKAHA small one bedroom cottage, quiet area, near ocean, OK for one person only. \$275 includes utilities. 696-6484

84 MISCELLANEOUS

BANYAN Tree Plaza (Punahou), two bedroom, two bath apt., \$550. Call 946-7324

85 MISCELLANEOUS

KANEHOE: 3 bdrm., basement apt., prefer adults, incl. pets. Avail. 12/1 \$575 mo. incl. \$75 utils. Call 235-4208

86 MISCELLANEOUS

MOVE today 1 bdrm. \$300 total or large apt. \$400 pool area. 943-0092 Rent Mart till 8

87 MISCELLANEOUS

CHOOSE one 2 bdrm. \$410 fenced, ldry, or 3 bdrm. nr. beach \$500 Others. 943-0092 Rent Mart

88 MISCELLANEOUS

ROOM near KMCAS in 3 bdrm. home with beautiful ocean view and complete access to home with parking and cable TV. \$250 plus utilities, small deposit. 247-8755

89 MISCELLANEOUS

LANIKAI Beach nr. to Cool/Open/Airy/Quiet/Private 3 bdrm. \$2040+ 262-9119

90 MISCELLANEOUS

KAILUA: nr. Alakai School & KMCAS - beautiful spacious brick 3 bdrm., 2 bath on priv. road. \$1350. 254-1060

91 MISCELLANEOUS

WINDWARD 2 bdrm., w/lam. rm., enclosed garage, fenced yard, \$800. Ph: 262-0632

92 MISCELLANEOUS

HOUSES! Townhouse! Rent Mart has the one for you. 943-0092 till 8 p.m. 7 days. Small fee.

93 MISCELLANEOUS

FOSTER Village: 3 bdrm., 2 bath, fam. rm., solar, nr. schools \$1060. Ph. 422-4622

94 MISCELLANEOUS

KANEHOE: 3 bdrm., 2 bath, 2 parking, view cul-de-sac, children's welcome, washer/dryer \$800. 239-9983. 239-4381

95 MISCELLANEOUS

LANIKAI, 3 bdrm 1 bath, fireplace, yard, avail. 12/3 \$1000. 262-7018

96 MISCELLANEOUS

BEST bet. 4 bdrm. \$600 Waipahu, largest selections on Oahu. 943-0092 Rent Mart till 8

97 MISCELLANEOUS

PICK one 2 bdrm., Sall Lake \$500 or huga 3 bdrm. \$650, garage. Others. 1 -0092 Rent Mart

98 MISCELLANEOUS

YOUR choice nr. KMCAS \$295 or 1 bdrm. \$360 Kailua, carpet, many more. 943-0092 Rent Mart

99 MISCELLANEOUS

MATURE dependable woman will care for your home, pets, plants, refs. Ph. 261-5267

100 MISCELLANEOUS

MILLANI Golf Course: 2 bdrm., 2 1/2 bath, townhouse magnificent ocean, mountain, golf course views - end unit - cool & quiet, 1 yr. lease avail. Dec. 10. \$1100 a mo. 623-1543

101 MISCELLANEOUS

KANEHOE: Temple Valley, 2 bdrm., 2 bath townhouse, 2 car garage, Avail. Dec. 1. \$650. Peggy 524-8277

102 MISCELLANEOUS

HAWAII Kai: 3 bdrm., 2 1/2 bath, Avail. 1 Dec. \$850. Swede Larson (R) Cardinal Associates. Ltd. 395-8101

103 MISCELLANEOUS

KAILUA - Room available immediately for couple or individual. Must see to appreciate. Very clean, comfortable & affordable living. Call Gary, 262-9074

104 MISCELLANEOUS

CRESTVIEW - Waipahu, ipe, furnished bdrm. w/TV & 1/2 private bath, kitchen privileges. Single only \$300. 871-3745

105 MISCELLANEOUS

WORKING single person, own bedroom, share bath, kitchen and living room, rent \$300 plus deposit. 261-1478

106 MISCELLANEOUS

KANEHOE: room for rent \$250 incl. util., pool, washer/dryer, kitchen priv. 235-1840

107 MISCELLANEOUS

KANEHOE - 1 room for rent, 2nd floor, pool, parking \$200 mo., utilities not included. Call 395-2098 days 9 to 5

108 MISCELLANEOUS

BOTH near beach, Lanikai, 1 bdrm., garden apt. Kailua, rent \$175. Call, Refrig. 262-5445

109 MISCELLANEOUS

KAILUA: lovely bdrm. & bath near beach, private entrance, am. refrig. 262-8073

110 MISCELLANEOUS

KAILUA Beach, 1 bdrm., immaculate private cottage, \$35 a day. Call 261-2834

111 MISCELLANEOUS

MOLOKAI Wave Crest, sleeps 4, ten, pool \$30 day \$190 per week. Ph. 235-8699

112 MISCELLANEOUS

SCULPTURE studio needed in Kaimuki / Kapahulu / Kahala area. High ceiling and neighborhood necessary. 734-8401

113 MISCELLANEOUS

LOOKING for 4 bdrm. house in Kaneohe, partly furnished, no more than \$1000/mo. 4 adults, 4 children, references avail. Need by 12/1. Please phone 247-4394

114 MISCELLANEOUS

GUAM waterfront, 3 bdrm., in exchange for Oahu 3 bdrm home. 456-4379

115 MISCELLANEOUS

HARBOR ridge: 2 bdrm., 2 bath with excl. VA assumable. View. \$99,000 Fee Simple. MLS51436. What a buy! Call Non-Peria Properties 621-9334.

116 MISCELLANEOUS

Space, Value, Location, Convenience All in One! 3 bdrm., 2 bath, ocean & mountain view, extra storage, 2 covered parking stalls, even a heat pump for economy. Plus pool, sauna and playground. We've even included the appliances! And all at a great price \$79,000! Call Now. Lynn Wells (RA) 281-5649.

117 MISCELLANEOUS

MAILE Sands - VA appraised \$95,000 Fee as is excl. neighborhood. Catherine (R) 668-1220

FREE PICKUP CASH \$

for good used furniture. Rattan, wicker & beds. 261-8492 or 261-1406

PARADISE USED FURNITURE

dressers from \$45 & up; desks \$45 & up; chest bed \$150; tall bed w/ dresser chest \$125; dinette from \$125; 7 pc. rattan din. set \$325; ipe assortment of dining sets for the Holidays; 12 pc. bed \$95; beautiful king waterbed complete \$375; rattan king size bed \$350; rattan tall bookcase \$200; gas BBQ \$125; and many more items. Come see us at 320 Uluhaku St., Kailua. 261-8492. We also BUY USED FURNITURE.

LOVELY Bress bed for sale.

queen size, excl. cond. 423-1103

ROSEWOOD table, 8 chairs w/china cabinet, Murphy style bed, w/shelves & closet, Baldwin piano, NSA Japanese altar. Call 623-6528

7' SOFA, excl. cond., brown tone, \$200. Call 949-4059

HUGE FURNITURE SALE:

Up to 50% Off on quality home furnishings at Nimitz Used Furniture. Nice sofas from \$75 & up; dining room chairs \$5 ea., Only 50 left; Puna bed \$25; dining room sets from \$45 & up; China cabinets from \$129 bunk bed sets complete from \$98 & much more. Hurry in while supplies last. Come Browse. 3165 Nimitz Hwy. between Kalia and Kalia. Call Dodge. Open weekdays until 6 p.m. 834-1080

COUCH, chair & ottoman, good cond. Herculon material \$300 firm. Ph. 422-0847

ANTIQUE wht. Rattan Art Gallery Sofa w/2 matching chairs, swivel rocker \$500. 262-9929

SSSSCASHSSS for used furniture beds Rattan & Wicker 834-1080

HOME IMPROVEMENT LUMBER

Advertisement for Home Improvement Lumber featuring a picture of a person and text: 'Beautifully your home with one of these exotic woods. 1000 AOLOA PLACE, KAILUA, OAHU (BEHIND HOLIDAY MART) TEL. 263-4436'

CLOTHING COMPANY

SAMPLE SALE Nov. 15, 16 & 17 Sizes 4 to 46 Big Savings 573 Kaimalino St., Kailua Ph. 254-2927

FURNITURE WANTED

TOP CASH \$\$\$ for dressers, beds, rattan, wicker, etc. Call Mon-Fri. 8 a.m. to 5 p.m. 247-6621

128 MISCELLANEOUS

STORAGE Cabinet, wood 36" x 18" x 24" \$75. Versatile! Call 456-3222

129 MISCELLANEOUS

GIFT checks \$7.50% goes to Kaiser Computer Fund. Great Xmas Gift. 395-0359

130 MISCELLANEOUS

ANTIQUE wall clocks \$750-\$1650; 5 dresses; cam. 84 software \$10-115. 395-0359

131 MISCELLANEOUS

CHRISTMAS Craft Fair Sun. Nov. 18, 9 to 2 p.m. 1662 Kuahaka St., Pearl City

Advertisement for Century 21 Real Estate: 'Who else wants to earn big money selling real estate? Through the CENTURY 21® CareerTrak™ program, you'll learn the latest techniques in financing, selling, prospecting and everything else you need to know to start earning big commissions. Call us today. Century 21 REAL PROPERTIES 25 Kaneohe Bay Dr., #211 Kailua, HI. 254-5888'

Large advertisement for Koolau Vista Phase 1: 'IN EXCLUSIVE KAILUA GARDENS Koolau Vista PHASE 1 NOW SELLING VA NO DOWN!! FHA 2.03% DOWN!! 30 YEAR FIXED MORTGAGE NO ESCROW FEE FOR VA BUYERS STUDIO 1 BEDROOM 1 BATH 2 BEDROOM 1 1/2 BATH \$62,975 \$76,125 \$88,100 PHASE 1-BLDG. B, WILL BE COMPLETED BY THE TIME YOUR LOAN CLOSES!! COME IN TODAY!!! MODELS OPEN DAILY 1-5:30 P.M. TEL. 263-4436'

BUSINESS & SERVICE DIRECTORY

Grid of business and service advertisements including: Cleaning Services, Construction, General Contracting, Moving, Roofing/Gutter, Vacuum, etc. Includes 'CLEAN SWEEP' advertisement with phone number 235-5881.

CLIP & SAVE FOR QUICK REFERENCE To Place Your Service Directory Ad 3 LINES \$4.95 week CALL 235-5881 TODAY

Classified III November 15, 1984

***126 MISCELLANEOUS**

QUALITY crafted picnic tables. Adult and children sizes. Delivery available. Call Tim at 455-9847 or Phil at 455-4051

14K GOLD bracelet solid link 5mm rope chain 8" length, double lock. Bought for \$200 sold for \$1300. 13.5 nice Xmas gift. Evenings 545-2849

VACUUM cleaners, like new \$24.95 + up with guarantee. Call 735-6452

PINATAS Hat Dolls Rainbows, Strips, Stars (Hulls Candy & low priced) But Adult 624 6016

WINDWARD POTTERS CHRISTMAS FAIR
Nov. 17, 9 am to 3 pm
Lanikai Community Center
Aalapa Drive, Kailua

PORTABLE dishwasher \$75; reel to reel tape. Offer. Call 456-4191

BUNK bed set \$75. 2 1/2 drawer dressers \$10 & \$25. nice-a-bed w/matching swivel rocker \$150, erasable marker board \$45. 10 gallon aquarium, all accessories & stand \$50. Kodak camera projector, auto focus & reverse \$140; movie screen \$25. Call 422-1857

COMPLETE Browne uniform, size 6-7, worn twice, 10 pcs. \$40. 623-8983

DEHUMIDIFIER - 20 gallon seldom used. Excellent condition. \$25. 235-5609

SANTA available for children or adult Xmas parties. Whatever. 262-9200

SWEET Potato for sale 40c a pound. Call 247-0808 after 5 pm

TWO swivel-rocker, easy chairs \$130. One leg cabinet end table \$25. 623-0773

CHRISTMAS cash/Christmas gifts, buy or sell. Avon. Call Eileen 823-0330

TWIN mattress and box springs, all wood, 11" boards \$100. 623-4476

TAN naugahyde arm chair \$50. 5000 BTU air conditioner \$50. Ph. 261-6709

KONICA SLR camera with 3 lenses \$160. Firm. Call Ed at 533-8221 days

PIANO TUNING \$1900
Free interior cleaning & free bug treatment all included anywhere on Oahu.
28 years experience German trained
Mr. Mayors 395-0029

84 ELECTROLUX vacuum. Cost \$450. Must sell \$400. Call 455-9374

WASHER \$150, dryer \$125. Sanyo IR W-55. like new. 623-0324

REFRIG. 19 cu ft. GE. gold, \$300. Samsui amp, cassette, dgt. tuner. \$400. 262-3092

8 LADDER, boys clothing, life size mummus, patio chairs, turn. misc. 261-7861

EXEC. desk, \$125; birds eye maple dresser, mirror, \$215; carved Chinese dresser/cabinet, \$195. 8 ft. blk. naugahyde couch, \$85; glass-top coffee table, \$145; drop leaf table, \$55; mu. closet, \$45. LANIKAI 261-3018

BEAUTIFUL mahogany desk for home or off. excl. \$195; ref. \$325. 623-1543

BROTHER electric typewriter correcting, case \$100/offer. 235-1186

84 FILTER Queen vacuum. cost \$800. Must sell \$350. Ph. 735-3652 or 922-3294

WINDWARD TIME SERVICE JEWELERS will hold its annual Christmas Sale, Nov. 30 through Dec. 8, all merchandise in store discounted 10 to 30%. Lay-away and charge card accepted. Expert watch, jewelry & clock repair.
KAILUA SHOPPING CENTER 261-6661

84 ELECTROLUX vacuum. Cost \$450. Must sell \$400. Call 455-9374

WASHER \$150, dryer \$125. Sanyo IR W-55. like new. 623-0324

REFRIG. 19 cu ft. GE. gold, \$300. Samsui amp, cassette, dgt. tuner. \$400. 262-3092

8 LADDER, boys clothing, life size mummus, patio chairs, turn. misc. 261-7861

EXEC. desk, \$125; birds eye maple dresser, mirror, \$215; carved Chinese dresser/cabinet, \$195. 8 ft. blk. naugahyde couch, \$85; glass-top coffee table, \$145; drop leaf table, \$55; mu. closet, \$45. LANIKAI 261-3018

BEAUTIFUL mahogany desk for home or off. excl. \$195; ref. \$325. 623-1543

BROTHER electric typewriter correcting, case \$100/offer. 235-1186

84 FILTER Queen vacuum. cost \$800. Must sell \$350. Ph. 735-3652 or 922-3294

WINDWARD TIME SERVICE JEWELERS will hold its annual Christmas Sale, Nov. 30 through Dec. 8, all merchandise in store discounted 10 to 30%. Lay-away and charge card accepted. Expert watch, jewelry & clock repair.
KAILUA SHOPPING CENTER 261-6661

84 ELECTROLUX vacuum. Cost \$450. Must sell \$400. Call 455-9374

WASHER \$150, dryer \$125. Sanyo IR W-55. like new. 623-0324

REFRIG. 19 cu ft. GE. gold, \$300. Samsui amp, cassette, dgt. tuner. \$400. 262-3092

8 LADDER, boys clothing, life size mummus, patio chairs, turn. misc. 261-7861

EXEC. desk, \$125; birds eye maple dresser, mirror, \$215; carved Chinese dresser/cabinet, \$195. 8 ft. blk. naugahyde couch, \$85; glass-top coffee table, \$145; drop leaf table, \$55; mu. closet, \$45. LANIKAI 261-3018

BEAUTIFUL mahogany desk for home or off. excl. \$195; ref. \$325. 623-1543

BROTHER electric typewriter correcting, case \$100/offer. 235-1186

84 FILTER Queen vacuum. cost \$800. Must sell \$350. Ph. 735-3652 or 922-3294

WINDWARD TIME SERVICE JEWELERS will hold its annual Christmas Sale, Nov. 30 through Dec. 8, all merchandise in store discounted 10 to 30%. Lay-away and charge card accepted. Expert watch, jewelry & clock repair.
KAILUA SHOPPING CENTER 261-6661

84 ELECTROLUX vacuum. Cost \$450. Must sell \$400. Call 455-9374

WASHER \$150, dryer \$125. Sanyo IR W-55. like new. 623-0324

REFRIG. 19 cu ft. GE. gold, \$300. Samsui amp, cassette, dgt. tuner. \$400. 262-3092

8 LADDER, boys clothing, life size mummus, patio chairs, turn. misc. 261-7861

EXEC. desk, \$125; birds eye maple dresser, mirror, \$215; carved Chinese dresser/cabinet, \$195. 8 ft. blk. naugahyde couch, \$85; glass-top coffee table, \$145; drop leaf table, \$55; mu. closet, \$45. LANIKAI 261-3018

BEAUTIFUL mahogany desk for home or off. excl. \$195; ref. \$325. 623-1543

BROTHER electric typewriter correcting, case \$100/offer. 235-1186

84 FILTER Queen vacuum. cost \$800. Must sell \$350. Ph. 735-3652 or 922-3294

WINDWARD TIME SERVICE JEWELERS will hold its annual Christmas Sale, Nov. 30 through Dec. 8, all merchandise in store discounted 10 to 30%. Lay-away and charge card accepted. Expert watch, jewelry & clock repair.
KAILUA SHOPPING CENTER 261-6661

84 ELECTROLUX vacuum. Cost \$450. Must sell \$400. Call 455-9374

WASHER \$150, dryer \$125. Sanyo IR W-55. like new. 623-0324

REFRIG. 19 cu ft. GE. gold, \$300. Samsui amp, cassette, dgt. tuner. \$400. 262-3092

8 LADDER, boys clothing, life size mummus, patio chairs, turn. misc. 261-7861

EXEC. desk, \$125; birds eye maple dresser, mirror, \$215; carved Chinese dresser/cabinet, \$195. 8 ft. blk. naugahyde couch, \$85; glass-top coffee table, \$145; drop leaf table, \$55; mu. closet, \$45. LANIKAI 261-3018

***126 MISCELLANEOUS**

COLOR TV \$135, ref. \$250, elec. range \$195, washer \$150, dryer \$110, stack combo \$295; guaranteed. 528-3122

BLOOMING Calteleya orchid plants only \$8 & \$7 for 2 wks. only. 262-8941

NEW Picnic tables \$80. Purch savings \$70. Phone 293-8392

ASK about quality Plexiglas, dan. drinkboards & space. vitamin rack. They're the nicest gift to have. Call Phyl's Glass at 488-2839

LOSE WEIGHT NOW! 100% natural and nutritious way to lose those unwanted pounds. 100% money back guarantee. You have nothing to lose - but weight! Call 488-2839

RAINBOW Vacuum, cost \$850. Must sell \$300. Call 923-7943 or 735-2055

***127 APPLIANCES**

BRAND new Gibson washer & dryer, warranty \$400. Call 455-4811

WHIRLPOOL washer & dryer, good condition \$250. Call 247-4410

GE Refrigerator/Freezer, looks awful but runs. Best offer over \$25. 254-3806

WASHER/Dryer for rent, \$15 a month. C.O.E. Systems. 247-6621 or 247-5927.

TOP of the line Whirlpool washer and dryer, like new \$450/sell \$254.

WASHER \$95, stack washer/dryer \$295, gas apt. above \$35. 261-4641 or 235-5776

REFRIGERATOR, Must. See. GE no frost, 17 cu ft. good cond. \$185. 623-5364

REFRIGERATOR, \$35-5360

NOVEMBER Special! 1 door ref. \$65, 2 door ref. \$120. Frost free ref. \$218. Washer \$120, stove \$120. Guaranteed. Delivery available. Call 621-9003

***129 STEREO & TV**

COLOR TV 19", also color 25", 135 each. Best price! Call 946-6940

COLOR TV's 13 1/2", Hitachi \$110, GoldStar \$140, 395-6736 after 4 p.m.

19" RCA color remote, \$225/offer. Call 262-2848

SONY FM-7 stereo system, brand new in unopened package. \$300. 262-2631

***130 ANTIQUES**

PRIVATE Sale: 11/16 & 11/17, 8 a.m. to 2 p.m., turn & collectibles. 44-410 Kamehohi Bay Dr. 254-1088. No prior sales.

Special rates for Military Personnel Call 262-2555 or 263-8398 in Advance

***131 WIKI WIKI FREEBEE**

FREE, young male tabby cat, neutered and vac. One cat family call 947-3136

FREE 6 mo. old male kitten. Needs good home. Ph. 254-5709

FREE, pretty kittens, male, 3 mo., white w/black markings. Need perm. home. 671-7695

FREE adorable kittens, 6 wks. old, orange & black stripes and tiger stripe. Also calico cat, female, spayed, 6 mos. 422-4416

FREE Shepherd/lab/spitz, female, 8 months, 30 lbs. Also fox terrier, male, 1 year, 12 lbs. and calico cats, females spayed, 6 months. 621-2588

FREE, Baby rabbits and 1 unit to a good home. Call 422-8928

FREE, Adorable black kittens and 1 unit to a good home. Call 946-0812

FREE, Adorable blk & wht. Persian kittens, to loving homes. 395-4913

FREE, female puppies to good homes. 239-8329

***136 MISCELLANEOUS WANTED**

WANTED: used/broken color TV's, refrig, ranges, washer/dryers, VCR's, computers. Free pickup. Islandwide 528-3122

WE BUY USED FURNITURE WE PAY CASH AND PICKUP CALL 261-8492 or 261-1406

WE BUY USED FURNITURE TOP CASH & FREE PICKUP ISLANDWIDE 488-1965 7 DAYS

***141 BUILDING SUPPLIES**

800 SQ. FT. Yellow wood grain vinyl siding, \$800/offer. 668-2823 or 696-8780

***144 MUSIC SALES AND SERVICE**

EXPERT PIANO MOVING Crating, shipping, 833-1659 S & S Delivery 395-7955

MASON and Hamlin piano Sheraton console, Excl. cond. \$900. Call 235-4686

***148 LAWN & GARDENING**

COME TO VEGAS
Lawn mower Repair Service
Reel Mowers Sharpened
John Vegas
261-6204

***149 HARDWARE & EQUIP.**

SALE: Used lawnmowers and Doozers. For information call 833-0779. 8-4 p.m.

***151 PET SUPPLIES SALES & SERVICE**

HAND-LED w/TLCS. 5 mo. Eclectus parrot (red, maroon, blue) talks, cage, quality. 262-7254

***152 AUTOS WANTED**

TOP DOLLAR PAID DESPERATE. NEED CLEAN CARS
PAID FOR OR NOT
J.N. CHEVROLET/MAZDA
836-1222 2999 N. Nimitz Hwy.

***16B TRUCKS & PICKUPS**

'75 FORD 1/2 ton pickup, new paint & tires, excellent condition, \$2400/offer. Phone 239-4170 or 239-8676

'84 MAZDA PICKUPS \$5775
(1984) \$2000 base, 5 spd, carpet, tie bars, fuel mirrors, 5 in. boost trim.

J.N. CHEVROLET/MAZDA TRUCK CENTER
NIMITZ HWY. BY THE AIRPORT
PH. 836-0770

'72 TOYOTA Hilux pickup (truck) w/camper, mint condition, low mileage, new tires, shocks, paint and carpeting. Sacrifice \$2250. Call Geoff at 261-4929 or 261-7934. No message if not in.

'71 TOYOTA Hilux, new front end, battery, air, w/w, 11000/offer. Ph. 262-9092

BIG DISCOUNTS HUGE TRADE-INS

'84 Chevy S-10 Pickup (LT3603) V-6, 5 spd., air, power steering + more. Retail \$12,328. **SALE PRICE \$8975**

'84 Chevy SS Designer El Camino (LT3641), customized trim & hood by Custom Customs, fully accessorized. Retail \$15,747. **SALE PRICE \$13,745**

'84 Chevy full-size Pickup (LT-3358) long bed, 8 cyl., auto, power steering + more. Retail \$12,256. **SALE PRICE \$8975 4x4**

'84 Chevy 4x4 S-10 Durango Pickup (LT3107) V-6, auto, power steering, radio + more. Retail \$13,608. **SALE PRICE \$10,775**

'84 Chevy 4x4 S-10 Blazer (LT-3351) V-6, auto, power steering, stereo + many other options. Retail \$15,300. **SALE PRICE \$12,775**

'84 Chevy 4x4 S-10 Blazer Pickup (LT3615) V-8, 4 spd., air, stereo, loaded w/options. Retail \$18,042. **SALE PRICE \$12,875**

J.N. CHEVROLET/MAZDA TRUCK CENTER
NIMITZ HWY. BY THE AIRPORT
PH. 839-0770

ANSWER TO LAST WEEK'S CROSSWORD
IN SUN-FLYER, HAWAII NAVY NEWS, & SUN PRESS NEWSPAPER

OURS WETS PLATA PARK
STEP BAYOU LODEN ERIA
CIMA ERHOL APING LEAR
A L A L L A L L A L L O N E S A L A L L
R E P A I D EVERS LEE
T E G GENET WESTERN
S M O N E B A L L D MORN EAU
E T O UGLY BONEA L R I
L E D AGRES MATI LESE
S I A MAR TONTO AME
A L L O R NEANONE FOR ALL
E R E EMPTY MAS BOO
O D E A COMES HEART ADO
P H A L L CONES SOLT TEN
A R EAST STALL WONES
P O N T A L L SHORE AGE
L I T O RANIN REGALL
N A L L D A R E C O N E I T T R E A B O N
A L E E R E C U R A D O R E T I M E
P E A R ENATE L E N H E D A M
E N Y T O P E R L A G O D E N Y

America's Greatest Puzzle . . .
Every Week from the New York Times

***151 PET SUPPLIES SALES & SERVICE**

COCKATIE! Med. Moving. Must sell \$50 w/food & cage. Call 261-7103

DOBERMAN pups for sale, no papers, \$100. 677-3731

PUREBRED Doberman pups, no papers. Call 488-5883

***156 AUTO PARTS & SERVICE**

GUARANTEED used engines, transmissions & rear ends. Drive Line Components U39-9771

VW Trans. '72 Karmann Ghia heads, rebuilt dual port. 622-3780

***146 BOATS SUPPLIES & SERV.**

FREE! 17' Fiberglass boat & trailer w/marine of 1978. Evinrude engine 3.600. Call Bob 4 to 11 p.m. 262-7809

12' JON Boat, homemade, 3.5 hp motor & trailer \$800. Call 254-5160

35' CUTTER Rigged, '70 sailboat, proven world cruiser, excl. live-aboard. Owner: POSING. Dec. \$34,500/offer. 955-4286

28' HAWK FARM Sailboat "Coyote," an extremely fast, competitive racer, extremely comfortable and spacious. Completely rigged for racing/cruising. Must see to appreciate. Docked at Iroquois Lagoon Yacht Club. \$28,000 or possible half partnership. Call 684-8207 (W) or 682-3079 (H).

"BATTERY FACTORY"
New and Reconditioned Auto Batteries \$25 + trade & dp
New Motorcycle Batteries
747 Kaplani
533-3312

SPORT FISHING on the MISS MAKAHA

Deep sea fishing along the scenic Waianae coast, with usually wind sheltered seas for MARLIN, TUNA, ONO, MAHIMAH!

We supply all gear. Just bring your lunch. Maximum 6 passengers but special rates for private parties of 1-4.

Full Day (7 HRS) \$220
Half Day (4 HRS) \$150

The "MISS MAKAHA" is berthed at Waianae Harbor, Slip A-30

CALL CAPT. FRED RACKLE
PH. 695-9923

***147 SPORTING GOODS**

WINDSURFING
Now available at Bellows AFS (Boathouse)
Lessons-Rentals International Certification Available Sat. & Sun or by appt. Special rates for Military Personnel Call 262-2555 or 263-8398 in Advance

***148 LAWN & GARDENING**

COME TO VEGAS
Lawn mower Repair Service
Reel Mowers Sharpened
John Vegas
261-6204

***149 HARDWARE & EQUIP.**

SALE: Used lawnmowers and Doozers. For information call 833-0779. 8-4 p.m.

***151 PET SUPPLIES SALES & SERVICE**

HAND-LED w/TLCS. 5 mo. Eclectus parrot (red, maroon, blue) talks, cage, quality. 262-7254

***152 AUTOS WANTED**

TOP DOLLAR PAID DESPERATE. NEED CLEAN CARS
PAID FOR OR NOT
J.N. CHEVROLET/MAZDA
836-1222 2999 N. Nimitz Hwy.

***16B TRUCKS & PICKUPS**

'75 FORD 1/2 ton pickup, new paint & tires, excellent condition, \$2400/offer. Phone 239-4170 or 239-8676

'84 MAZDA PICKUPS \$5775
(1984) \$2000 base, 5 spd, carpet, tie bars, fuel mirrors, 5 in. boost trim.

J.N. CHEVROLET/MAZDA TRUCK CENTER
NIMITZ HWY. BY THE AIRPORT
PH. 836-0770

'72 TOYOTA Hilux pickup (truck) w/camper, mint condition, low mileage, new tires, shocks, paint and carpeting. Sacrifice \$2250. Call Geoff at 261-4929 or 261-7934. No message if not in.

'71 TOYOTA Hilux, new front end, battery, air, w/w, 11000/offer. Ph. 262-9092

BIG DISCOUNTS HUGE TRADE-INS

'84 Chevy S-10 Pickup (LT3603) V-6, 5 spd., air, power steering + more. Retail \$12,328. **SALE PRICE \$8975**

'84 Chevy SS Designer El Camino (LT3641), customized trim & hood by Custom Customs, fully accessorized. Retail \$15,747. **SALE PRICE \$13,745**

'84 Chevy full-size Pickup (LT-3358) long bed, 8 cyl., auto, power steering + more. Retail \$12,256. **SALE PRICE \$8975 4x4**

'84 Chevy 4x4 S-10 Durango Pickup (LT3107) V-6, auto, power steering, radio + more. Retail \$13,608. **SALE PRICE \$10,775**

'84 Chevy 4x4 S-10 Blazer (LT-3351) V-6, auto, power steering, stereo + many other options. Retail \$15,300. **SALE PRICE \$12,775**

'84 Chevy 4x4 S-10 Blazer Pickup (LT3615) V-8, 4 spd., air, stereo, loaded w/options. Retail \$18,042. **SALE PRICE \$12,875**

J.N. CHEVROLET/MAZDA TRUCK CENTER
NIMITZ HWY. BY THE AIRPORT
PH. 839-0770

ANSWER TO LAST WEEK'S CROSSWORD
IN SUN-FLYER, HAWAII NAVY NEWS, & SUN PRESS NEWSPAPER

OURS WETS PLATA PARK
STEP BAYOU LODEN ERIA
CIMA ERHOL APING LEAR
A L A L L A L L A L L O N E S A L A L L
R E P A I D EVERS LEE
T E G GENET WESTERN
S M O N E B A L L D MORN EAU
E T O UGLY BONEA L R I
L E D AGRES MATI LESE
S I A MAR TONTO AME
A L L O R NEANONE FOR ALL
E R E EMPTY MAS BOO
O D E A COMES HEART ADO
P H A L L CONES SOLT TEN
A R EAST STALL WONES
P O N T A L L SHORE AGE
L I T O RANIN REGALL
N A L L D A R E C O N E I T T R E A B O N
A L E E R E C U R A D O R E T I M E
P E A R ENATE L E N H E D A M
E N Y T O P E R L A G O D E N Y

America's Greatest Puzzle . . .
Every Week from the New York Times

***151 PET SUPPLIES SALES & SERVICE**

COCKATIE! Med. Moving. Must sell \$50 w/food & cage. Call 261-7103

DOBERMAN pups for sale, no papers, \$100. 677-3731

PUREBRED Doberman pups, no papers. Call 488-5883

***156 AUTO PARTS & SERVICE**

GUARANTEED used engines, transmissions & rear ends. Drive Line Components U39-9771

VW Trans. '72 Karmann Ghia heads, rebuilt dual port. 622-3780

***151 PET SUPPLIES SALES & SERVICE**

COCKATIE! Med. Moving. Must sell \$50 w/food & cage. Call 261-7103

DOBERMAN pups for sale, no papers, \$100. 677-3731

PUREBRED Doberman pups, no papers. Call 488-5883

***156 AUTO PARTS & SERVICE**

GUARANTEED used engines, transmissions & rear ends. Drive Line Components U39-9771

VW Trans. '72 Karmann Ghia heads, rebuilt dual port. 622-3780

"BATTERY FACTORY"
New and Reconditioned Auto Batteries \$25 + trade & dp
New Motorcycle Batteries
747 Kaplani
533-3312

***161 AUTOS WANTED**

TOP DOLLAR PAID DESPERATE. NEED CLEAN CARS
PAID FOR OR NOT
J.N. CHEVROLET/MAZDA
836-1222 2999 N. Nimitz Hwy.

***16B TRUCKS & PICKUPS**

'75 FORD 1/2 ton pickup, new paint & tires, excellent condition, \$2400/offer. Phone 239-4170 or 239-8676

'84 MAZDA PICKUPS \$5775
(1984) \$2000 base, 5 spd, carpet, tie bars, fuel mirrors, 5 in. boost trim.

J.N. CHEVROLET/MAZDA TRUCK CENTER
NIMITZ HWY. BY THE AIRPORT
PH. 836-0770

'72 TOYOTA Hilux pickup (truck) w/camper, mint condition, low mileage, new tires, shocks, paint and carpeting. Sacrifice \$2250. Call Geoff at 261-4929 or 261-7934. No message if not in.

'71 TOYOTA Hilux, new front end, battery, air, w/w, 11000/offer. Ph. 262-9092

BIG DISCOUNTS HUGE TRADE-INS

'84 Chevy S-10 Pickup (LT3603) V-6, 5 spd., air, power steering + more. Retail \$12,328. **SALE PRICE \$8975**

'84 Chevy SS Designer El Camino (LT3641), customized trim & hood by Custom Customs, fully accessorized. Retail \$15,747. **SALE PRICE \$13,745**

'84 Chevy full-size Pickup (LT-3358) long bed, 8 cyl., auto, power steering + more. Retail \$12,256. **SALE PRICE \$8975 4x4**

'84 Chevy 4x4 S-10 Durango Pickup (LT3107) V-6, auto, power steering, radio + more. Retail \$13,608. **SALE PRICE \$10,775**

'84 Chevy 4x4 S-10 Blazer (LT-3351) V-6, auto, power steering, stereo + many other options. Retail \$15,300. **SALE PRICE \$12,775**

'84 Chevy 4x4 S-10 Blazer Pickup (LT3615) V-8, 4 spd., air, stereo, loaded w/options. Retail \$18,042. **SALE PRICE \$12,875**

J.N. CHEVROLET/MAZDA TRUCK CENTER
NIMITZ HWY. BY THE AIRPORT
PH. 839-0770

'72 TOYOTA Hilux pickup (truck) w/camper, mint condition, low mileage, new tires, shocks, paint and carpeting. Sacrifice \$2250. Call Geoff at 261-4929 or 261-7934. No message if not in.

'71 TOYOTA Hilux, new front end, battery, air, w/w, 11000/offer. Ph. 262-9092

BIG DISCOUNTS HUGE TRADE-INS

'84 Chevy S-10 Pickup (LT3603) V-6, 5 spd., air, power steering + more. Retail \$12,328. **SALE PRICE \$8975**

'84 Chevy SS Designer El Camino (LT3641), customized trim & hood by Custom Customs, fully accessorized. Retail \$15,747. **SALE PRICE \$13,745**

'84 Chevy full-size Pickup (LT-3358) long bed, 8 cyl., auto, power steering + more. Retail \$12,256. **SALE PRICE \$8975 4x4**

'84 Chevy 4x4 S-10 Durango Pickup (LT3107) V-6, auto, power steering, radio + more. Retail \$13,608. <

FORD
 '77 PINTO stick low mileage. 262-6103
 '80 MUSTANG convertible, good cond., sound. For. Ph. 261-1344
 '80 MUSTANG V8 auto. low mileage, very reasonable. 262-6103

HONDA
 '79 Mazda Wagon \$2475
 auto. clean family car (BFC080)
 J.N. CHEVROLET/MAZDA
 836-1222 2999 N. Nimitz Hwy.

MAZDA
 HIGH TRADE-IN ALLOWANCES
HUGE DISCOUNTS
 Has left us with
NO NEW '84 MAZDAS
 Care in our inventory!
WE ARE EXTENDING THESE SUPER DEALS!!!
 On to our
WIDE SELECTIONS
 of
'85 MAZDAS
 RX7, B26, GLC's
\$5775
 Hawaii's oldest Mazda dealer
J.N. CHEVROLET/MAZDA
 2999 N. Nimitz Hwy. 836-1222

MAZDA
 '83 MAZDA RX7, low mileage (7800), air, 5 spd., car cover \$9650. Call 524-0034, 908-7649

MERCURY
 '73 MERCURY Montego 2 dr. loaded, good running cond., \$1400/offer 833-7420.

MG
 '75 MIDGET, 60,000 mi., good cond., extras. Must sell. Call after 6 p.m. 263-8337.

OLDSMOBILE
 '79 OLDS Delta, Diesel, fully loaded. Seats 6. \$2700. '95-1211

PLYMOUTH
 '76 PLYMOUTH Sports Fury, 2 dr., body some rust, good running \$700, 622-1803

PORSCHE
 '85 PORSCHE 911, 5 spd., 6 cyl., Webbers, needs work. \$3500 offer. 545-1811/545-2908

PONTIAC
 '78 PONTIAC Bonneville Brougham, excel. running cond., \$3500 or offer. 455-4811

PONTIAC
 '78 FIREBIRD \$3475
 Formula, has all the toys, incl. glass T top (BFS807)
 J.N. CHEVROLET/MAZDA
 836-1222 2999 N. Nimitz Hwy.

SUBARU
HAWAIIAN ISLE
 Used cars
 '81 Subaru
 1 spd., Clean Car, low Mileage Price, #E1083 \$1,195
 Financing Available O.A.C.
 3103 N. Nimitz Hwy.
 836-1754

SAPPORO
 '81 SAPPORO 5 spd., a/c, loaded, \$5500 or best offer. Call 696-6704

TOYOTA
 '76 TOYOTA Corolla, good condition, some rust, runs well. Asking \$550. Call 239-7987 after 5 p.m.

TRIUMPH
 '74 TH-6, convertible, 4 spd. overdrive, good cond., sharp car. Must sell \$1900 firm. 621-8214. Even 235-5881. days ask for David

VOLKSWAGEN
 FOR SALE 1972 Volkswagen Van. Excellent condition. Recent paint job and rebuilt engine. No rust. AM/FM stereo. \$2750/offer. Make C. days 235-5881, even 261-6226

VOLKSWAGEN
 '69 BUG, 2010cc, must condition. \$400/offer. Must see in appropriate. 625-0163

'81 CIVIC
 \$3475
 2 dr., 4 spd., clean (BFR835)
 J.N. CHEVROLET/MAZDA
 836-1222 2999 N. Nimitz Hwy.

1980 HONDA Prelude automatic, AM/FM cassette, \$5,200, like new. 293-2541.

'84 HONDA CRX (sports model), red, 6000 mi., like new, \$7200/offer. 254-1060

'81 HONDA Prelude 5 spd., sun/moon roof, AM/FM cassette, low miles, new radials. \$5,300/offer. 545-1811/545-2908

TONY HONDA
 PEARLRIDGE

'74 AUDI 100 2 dr., std., radio, NAVW696 \$995	'76 FORD Elite 2 dr., LOADED, #ASF700 \$995	'78 DODGE Aspen 2 dr., #ASP578 \$1,195
'77 PONTIAC Grand Prix 4 dr., #AT5140 \$1,295	'77 MUSTANG V8 auto, radio, #ATM81 \$1,495	'78 OLDS Omega auto radio, #AFU841 \$1,595
'77 CHEVY Nova 4 dr., auto, radio, #AYU856 \$1,795	'77 TRIUMPH TR7 H/T std., 5 spd., #ADP081 \$1,995	'77 VW Bug std., radio, #ACW033 \$1,995
'79 DATSUN Wagon std. radio, #AVJ337 \$2,495	'81 RABBIT 2 dr., 4 spd., radio, #RUS32 \$2,995	'79 OLDS Cutlass 2 dr., AM/FM radio, a/c, auto, #BDP995 \$4,195

98-057 KAM HWY. 488-8499
 Sales Ends 11/20/84 Prices plus tax & license. Subject to prior sale.
SPECIALIZE IN MILITARY FINANCE

'85 HONDAS NOW AT TONY HONDA PEARLRIDGE
 98-057 Kam Hwy
 487-5599

JENSEN
 '78 Interceptor III
 Used Cars
 Only 24,500 mi. on this gorgeous British classic: all the toys incl. elec. sunroof, CPI Book Value \$23,000.
 J.N. CHEVROLET/MAZDA
 836-1222 2999 N. Nimitz Hwy.

Going to OREGON to buy a new car or pickup?
 -contact-
ROBERTS & REDFIELD
 PORTLAND
 Write for price lists and full information
ANY MAKE - ANY MODEL
 Delivered - road tested at Portland International Airport
ROBERTS & REDFIELD
 Suite #102
 6020 N.E. 82nd
 Portland, Oregon 97228
 (503) 257-0561
 Conveniently located just 5 minutes from Airport!

WINDWARD VOLKS
 725 Kailua Rd.
 Ph. 262-6576

18 USED AUTOS UNDER \$1000

'73 TOYOTA COROLLA #AJE300	\$479
'67 VW SQUAREBACK #MRS226	\$509
'76 DODGE COLT #BFY568	\$525
'75 PINTO #ACJ088	\$542
'75 DATSUN WAGON #ADD949	\$685
'74 DATSUN 210 #DCA407	\$729
'66 BUICK SPECIAL #ADF528	\$745
'69 CADILLAC DeVILLE #ASH979	\$788
'77 MAZDA 4 dr. #AXE467	\$818
'77 FIAT WAGON #AWF372	\$828
'72 DATSUN WAGON #BRC891	\$849
'76 HONDA CIVIC #AGX488	\$849
'71 VW SQUAREBACK #AJV908	\$949
'74 NOVA LIFTBACK #AVW702	\$988
'74 CADILLAC EL DORADO #HAY831	\$991
'76 TOYOTA WAGON #BJG614	\$992
'74 CAMARO #BFX523	\$999
'76 HONDA #BTS391	\$999

BEST DEAL

1984 CAVALIER STATION WAGON



BEST DEAL PRICE \$7,290 STK. NO. 400232

- Cavalier 4-Dr. Station Wagon • Vinyl Bucket Seats • Tinted Glass
- Color Keyed Floor Mats Ft./Rear only • Dual R Speakers
- Body Side Moldings • Door Edge Guards • Cig. Lighter
- Body Pin Stripling • 2.0 Lt. E.F.I. 4 cyl. Eng. • Auto. Trans.
- P-Steering • P175/80 R-13 G/B Rad B/Wall Tires • AM Radio

ALL PRICES PLUS TAX & LIC. ALL UNITS SUBJECT TO PRIOR SALE.
 PRICES GOOD TILL NOV. 22, 1984

Excellent Financing/Complete Parts & Service/Trade-Ins Welcome

TOYOTA SERVICE MOTORS
 CHEVROLET, TOYOTA, SUZUKI, USED CARS
 105 KAM HWY., WAHIAWA (ACROSS McDONALD'S)
 622-4195

BEST DEAL!

1984 CHEVETTE 4 DR.



BEST DEAL PRICE \$5,968

- Chevette 4 Dr. Hatchback Sedan • Body Side Moldings
- Color Keyed Floor Mats-Ft./Rear • Power Brakes
- Black Door Edge Guards • Cig. Lighter • AM Radio • 1.8 Lt. 4 cyl. Eng.
- Automatic Transmission • P165/80 R-13 G/B Rad B/Wall Tires • Cloth Bucket Seats

ALL PRICES PLUS TAX & LIC. ALL UNITS SUBJECT TO PRIOR SALE.
 PRICES GOOD TILL NOV. 22, 1984

Excellent Financing/Complete Parts & Service/Trade-Ins Welcome

TOYOTA SERVICE MOTORS
 CHEVROLET, TOYOTA, SUZUKI, USED CARS
 105 KAM HWY., WAHIAWA (ACROSS McDONALD'S)
 622-4195

CUTTER FORD
 MILITARY FINANCING AVAILABLE

'74 CUTLASS #5347	\$295	'77 MONARCH #5238	\$1095
'74 MUSTANG #5372	\$395	'76 LAMAS #4836	\$1295
'72 F250 #5372	\$495	'76 CORDOBA #5095	\$1295
'73 TORINO #5337	\$495	'76 E-150 VAN #5374	\$1295
'72 TOYOTA Wagon #4901	\$695	'77 RABBIT #4988	\$1395
'73 CUTLASS #5345	\$695	'77 SUBARU GF #5382	\$1395
'75 IMPALA #5375	\$895	'78 GRANADA #5384	\$1595
'75 DATSUN B210 #5373	\$995	'78 RABBIT #5154	\$1695

98-015 Kam Hwy., AIEA • Ph: 487-3811

'77 HONDA Civic Special \$1295
 2 dr., 4 spd., AM/FM case, #AAF280

'78 CHEVY Chevette Special \$1795
 4 dr., sedan, auto., #AD1549

'74 FORD Van Special \$2495
 1.9L 8 cyl., p/s, 3 spd., may have AM/FM case, #BVG009

'80 DATSUN P/U Special \$2495
 5 spd., 4 cyl., AM/FM case, #ANA321

'82 FORD EXP Special \$3995
 Cpe. 4 cyl., 4 spd., p/s, a/c, #BSJ176

'80 CHEROKEE Laredo Special \$7995
 2 dr., V8, 4 spd., p/s, a/c, #BSV337

Offer good Nov. 15 thru Nov. 20

PEARLHARBOR
 AMC/Jeep
 Waipahu. We buy cars too! 677-0709

HAWAIIAN ISLE
 Used Cars
 Call 836-1754

'75 Ford Mustang 4 cyl. sunroof, 4 spd. cassette, #BDR957	\$695
'77 Datsun P/U 4 cyl., 4 spd., #H11153	\$1195
'79 Mercury Monarch 2 dr., a/c, auto, 6 cyl., #AJU127	\$1295
'80 Datsun 210 auto., 4 dr., #ADV137	\$2495

Many More Cars to Choose From
 Financing Available On Approved Credit
 3103 N. Nimitz Hwy., Honolulu
 Prices good thru Nov. 21, 1984

CUTTER DODGE AIRPORT
OVER STOCKED

'77 Ford LTD II #ADU961	\$1193	'79 Toyota Corolla #AYX127	\$3369
'67 Chevy Camaro #AJA124	\$1387	'77 Lincoln Versailles #BWU411	\$3620
'78 Ford Mustang #B218MV	\$1925	'83 Dodge Charger #B5A346	\$5407
'77 Honda Civic Wagon, #ACX619	\$1946	'84 Dodge D50 P/U #H65TCC	\$5584
'78 Datsun B210 #BRW925	\$2472	'82 Ford Mustang #BGP413	\$5835
'78 Monte Carlo #BFY683	\$2803	'80 Volvo VL4 Dr. #BEW235	\$6702
'81 Ford Escort #BAT591	\$2937	'83 Dodge D50-4x4 #BSP779	\$8919

Many More Cars to Choose From!
 Low Down Payment - Easy Financing!
 Prices Good through Nov. 18, 1984

Your Only Intown Dodge Dealer
 3149 NIMITZ HWY.
 836-0626
 Cars subject to prior sale. Plus Tax & License

WOLFSALE

\$85 OVER COST + DEST. CHG.
 on All 1984 CONVERTIBLES
RABBIT's JETTA's & QUANTUM's
 38 to CHOOSE FROM
WHILE THEY LAST!
ALA MOANA VOLKSWAGEN
 800 ALA MOANA BLVD.
 537-3386

WAIPAHU SHELLY MAZDA 100% Financing Available

'76 MONZA 2 dr. ASD109	\$895	'76 DATSUN 60,000 mi., RUNS GOOD ANA869	\$995	'78 HORIZON 4 dr., 4 spd., slk. 0254	\$1295
'77 CELICA MUST GO. BJE457	\$1495	'80 DATSUN 310 2 dr., 5 spd., BAU191	\$1695	'78 COUGAR 2 dr. Black, SHARP CAR! BFP594	\$1795
'77 CUTLASS 2 dr., auto., BPF594	\$1795	'78 ASPEN STN. WGN. a/c, SUPER NICE. BAS370	\$1995	'80 SKYLARK Very Clean. BW0238	\$2995
'82 DATSUN STN. WGN. auto., a/c. STEAL! MFF791	\$3295	'79 CAMARO T-TOP Rally Wheels, SHARP BUR999	\$4995	'84 GLC 3 dr., 4 spd., BVV294	\$5495

94-212 Leoku St., Waipahu 677-0761
 Offer Good Till Nov. 21
 All Units Subject to Prior Sale

WE'RE OVERSTOCKED!!!

'78 SUBARU 2 dr., hardtop auto, mech. spec. low way (BPA108)	\$295	'74 CHEVY Malibu 2 dr., 4 spd., radio (ART101)	\$295
'74 DATSUN B210 4 dr. auto, radio, GLAS. O.K. (AYU291)	\$355	'74 VW Dasher 2 dr., auto., radio (AGG461)	\$395
'77 MAZDA GLC 2 dr., 4 spd., radio (ACW483)	\$495	'76 DODGE Colt 2 dr., hardtop, auto, radio (BGC319)	\$495
'72 VW Superbeetle 4 spd. GOOD BODY. Needs mech work (B21121)	\$595	'75 TOYOTA Corona 4 dr. auto., radio, GOOD NUMBER (BRC250)	\$895
'78 DATSUN 510 2 dr. auto. AM/FM, radio (BGF1321)	\$995	'75 TOYOTA P/U HIGH LUXURY TRUCK, 4 spd., radio (H1185)	\$1095
'74 TOYOTA Celica ST Cpe., 4 spd., AM/FM, GOOD MECH. CONDITION (ATK153)	\$1195	'75 VW Rabbit 4 dr., 4 spd., radio (ANS418)	\$1195
'79 MAZDA GLC 4 dr., wagon auto radio (ANS218)	\$1395	'78 HONDA Civic 2 dr., 4 spd., radio (M1UB57)	\$1595

Many More Cars to Choose From!
 Low Down Payment - Easy Financing!
 Prices Good through Nov. 19, 1984

Corner of Kam & Nimitz Hwys
WINDWARD TOYOTA
 PH. 235-0068 OPEN 7 DAYS A WEEK
 Subject to prior sale.

NISSAN OF WAHIAWA

'84 Sentra 2 Dr. Deluxe Sedan \$49 Over Factory Invoice*

'84 Sentra 4 Dr. Deluxe Sedan \$49 Over Factory Invoice*

621-0761 WE SPECIALIZE IN MILITARY FINANCING

'75 Ford Granada 2 dr., 8 cyl., auto, p/s, APG644	\$695	'73 Pont. Conv'ble Grand Ville 2 dr., 8 cyl., auto., p/s, AWU899	\$1595	'77 Honda Civic 2 dr., 4 cyl., auto., radio, AAS863	\$1795
'78 Merc. Marquis 4 dr., auto., p/s, a/c, BAC40R	\$1495	'80 Ford Pinto 2 dr., H/B, auto., p/s, DZV503	\$1695	'76 Chevy Nova 2 dr., 6 cyl., auto., p/s, radio BNT479	\$1895

\$49 Over Factory Invoice applies to only '84 Sentra 2 dr. & 4 dr. Sedans
 Prices Plus Dealer Installed Accessories If Any
 Prices Good thru Nov. 21, 1984



It is our pleasure to honor Veterans, past and present, and especially, the men and women of this community who have served in our armed forces. We're proud of the time you gave and the work you did, and are always glad to be of financial service.

OFFROAD HAWAII

- ★ DICK CEPEK
- ★ RANCHO SUSPENSION
- ★ DOWNEY
- ★ B. F. GOODRICH
- ★ RECONSTRUCTION (Bumper Height Law Updates)
- ★ CALL FOR DETAILS ON 4-WHEEL TRUCK RALLEYS!!

235-1153 46-208 Kahuhipa St., Kaneohe, Hawaii

HONDA FOLLOW THE LEADER

THE CUSTOM REVOLUTION CONTINUES

For those who demand high performance and superior styling, there are now three Magna™ models to choose from. Whether you choose the awe-inspiring V-85, the revolutionary Magna, or the economical V30, you're getting Honda's incredible V-4 performance, plus state-of-the-art maintenance technology, all wrapped in that eye-catching Magna

671-2691
Sandy Brodie's Mon.-Sat. 8am-5pm
WAIPAHU CYCLES

NEVER WAX YOUR CAR AGAIN

15% OFF

WITH PURCHASE OF COMPLETE SHINE FACTORY PROCESS

COMPLETE EXTERIOR/INTERIOR CAR CARE

2 Locations to Better Serve You

PEARL CITY 96-1173 Wahiawa St., #A-9 455-1017	KANEOHE 45-564 Kam Hwy. 235-5833
--	---

the Shine Factory

STARS & STRIPES

BUY AMERICAN

EXTENDED 3 DAYS ONLY

LOUNGE IN COMFORT AT BUDGET'S CHAIR OF CHAIRS SALE!

RECLINERS! Vinyl! Herculon!

From **\$149**

STACK CHAIRS \$19 \$29

Chrome frames with neoplyds covering

Dining Chairs \$29 each

Oak wicker back, upholstered seats

Occasional Chairs \$99

Upholstered

Cute!! & Tiny Junior Recliners! \$98!

PICKUP PROFITS

TRUCK \$2000 BED MAT OFF

Prices starting from \$195 Good thru

Auto Mastics, Inc.

Save wear and tear of your truck bed with a Nyracord bed mat. Protects finish, withstands extreme temperatures and is unaffected by most chemicals and will not crack or break. Sizes to fit all models in black only. Tailgate protector optional.

For more info. Call **524-4020**

COMPLETE RUSTPROOFING SERVICE
Other Professionally Applied Services Available

T&T Sealant • Protective Side Molding • Complete Detail • Steam Cleaning • Interior Shampoo • Tinting (Trucks & Vans Only) • Interior Sealing (Velouris) • Minor Body Work • Compound & Waxing • Stripping

DBA-B.T. Enterprises
501 Cooke Street Honolulu, Hawaii 96813

Island Auto Exchange

'72 Torino #BSV307 \$450	'76 Granada #ABE308 \$850
'75 Nova #BTX996 \$550	'79 Colt #MAK797 \$950
'73 Toyota #AFY558 \$650	'75 Datsun #ACT953 \$1150
'75 Cutlass #AGG430 \$750	'76 Elite #BCG768 \$1250

Military Finance Specialty!!

622-3977

152 Wilklna Dr.
Prices good thru 11/21/84

Stars and Stripes Specials

'79 Chevy Corvette Custom Paint, Loaded, DLH...

SAVE

'74 Toyota Celica Auto., Excellent, BPD463	\$1897
'78 Ford Granada Excellent, New Paint, ARB900	\$2397
'75 Chevy Van Excellent, New Paint, BPD465	\$2797
'80 Toyota Corolla Excellent, New Paint, BAT633	\$2797
'79 Ford T-Bird ASW330	\$2997
'81 Honda Civic S/W New Condition, BGC643	\$3697
'78 Lincoln Versaille Loaded, ANP406	\$4397
'80 Chevy Z28 Loaded, Fast, AWV530	\$5897
'80 Ford 4x4 P/U Black Beauty, AX010	\$5997
'78 Datsun 280Z Excellent, ADX041	\$5997

677-9167
Prices Good Thru Nov. 20, 1984

DOWNTOWN USED CARS IN WAIPAHU

94-097 Farrington Hwy.

Star Spangled Specials

WINDWARD

NISSAN

8.8% APR Financing

ANNOUNCING

or

\$500 REBATE ON ALL NEW TRUCKS

46-151 Kahuhipa St., Kaneohe
235-6433

MILITARY FINANCING AVAILABLE

RATTAN HIGH BACK SWIVEL CHAIRS

Now **\$149**

Reg. \$295

WHILE SUPPLIES LAST HURRY! SALE ENDS NOV. 18

BUDGET FURNITURE

98-115 KAM HWY., AIEA ONLY!
(Across from Paerlridge Center)

In-house Financing Low Down Payment EASY MONTHLY PAYMENTS

MasterCard VISA

488-7741

