

# Hawaii Marine

Vol. 15, No. 19

MCAS Kaneohe Bay, Hawaii

May 15, 1986

## Keeping America Free



May 17 is Armed Forces Day. For a list of events, see B-1.

## New navigation system revolutionizes operations

A soldier lost in the jungle pulls a small box out of his radio backpack, presses a few buttons and pinpoints his location. The captain on the bridge of a ship, or a fighter pilot flying at 600 miles an hour, use the same system to determine position and speed, and to calculate headings to the target.

This could soon become an everyday occurrence in military operations. The NAVSTAR Global Positioning System a space-based navigation system designed to provide exact position and navigation information, could be operational by the late 1980s.

According to Air Force Col. Phillip Baker, DoD project coordinator, the system will have three basic components: a system of 18 satellites, each circling the earth every 12 hours; ground-based control and monitoring stations; and user sets, adapted for vehicle, aircraft, ship or personal use.

When activated, these user sets will automatically process signals from four of the satellites in view from a particular location. Within seconds, the sets will provide

exact latitude, longitude, elevation and time information — anywhere in the world.

They also will allow soldiers, warship skippers, fighter pilots, submariners and tank commanders to pinpoint any village, island, enemy airfield or bridge... and the heading to that destination or target, if requested.

Defense officials say the system could revolutionize military operations. The potential applications for such a system — expected to be 10 times more accurate than any existing radio navigation system — are almost limitless.

The Global Positioning System will enhance weapons systems to an unprecedented accuracy. It will provide for precision targeting, enhanced reconnaissance and mapping operations, and more thorough satellite, submarine and missile tracking.

Already seven research and development satellites are in operation. Twenty-one operational satellites, three of which will serve as

backups, were expected to be launched during upcoming space shuttle missions. However, possible delays in that program could lead defense officials to consider other launch methods.

The system's ground control center is being established at the Consolidated Space Operations Center in Colorado Springs, Colo. A monitoring station is already operating in Hawaii, and another, in Colorado Springs, will soon follow.

In addition, monitoring and control stations are up and running at Diego Garcia in the Indian Ocean; Ascension Island in the South Atlantic Ocean; and Kwajalein Atoll in the Pacific Ocean's Marshall Islands.

Three hundred users sets — the first of some 27,000 DoD expects to purchase by the late 1990s — will come off the production line in 1987.

The sets will come in three models. A five-channel model will be used on high-performance aircraft and ships and a two-channel model on Army helicopters.

See NAVIGATION/A-9

## EFT Act protects credit card holders

Washington, D.C. — You reach for your purse or wallet, and it's gone, so is your Automated Teller Machine card. Despite your bank's instructions to the contrary, you wrote your Personal Identification Number — the code needed with the card to get into your accounts — on the back of the card.

Unfortunately, this situation happens more often than it should. If it happens to you, how much can you lose, and what can you do to minimize your loss?

In 1978, Congress passed the Electronic Fund Transfer

Act that covers transactions — withdrawals, deposits or other transfers of funds — begun by consumers at electronic terminals. After this law was passed, the Federal Reserve Board enacted Regulation E procedures.

The EFT Act provides the following protections:

If your card or PIN has been lost or stolen, your liability is limited to \$50 if you notify your financial institution within two business days of the loss or theft. If you fail to notify your institution within two

business days, your liability will increase to \$500.

If you receive your monthly statement and it doesn't reflect transactions made, such as deposits, you must promptly notify your financial institution. The EFT Act requires that your institution investigate the error and resolve it within 45 days. Also, if your institution takes longer than 10 business days to complete the investigation, it must recredit your account for the amount in question while finishing the investigation.

Once the investigation is completed, the financial institution must notify you of the result. It must either correct the error or, if no error is found, the institution must explain in writing why it believes no error exists and inform you that the amount in question has been deducted from your account. Also, you have the right to request copies of documents used in the investigation.

If your monthly statement shows unauthorized transfers, such as withdrawals, you must notify your

financial institution within 60 days of that statement's mailing. If you don't, you risk unlimited loss on transactions made after the 60-day period.

You can further protect yourself and your finances by taking the following steps:

Keep your ATM card separate from your PIN. This lessens the possibility of someone's gaining unauthorized access to your accounts if you lose your wallet or purse.

Ensure that others cannot see your PIN when you're using an electronic terminal.

Keep your transaction receipt until you've verified it with your monthly state-

ment. If an error is made, you will have the receipt to back you up.

Balance your account when you receive your statement. If you wait to do it later, it may be too late to protect your interests.

Automated teller machines have revolutionized the way we do our banking. Yet, this revolution requires that you, the consumer, know how to use the ATM card; what to do when your card is lost or stolen; how to ensure that you are protected when an error occurs; and that you exercise those rights under the law.

By Lt. Sam Kitterman, USNR  
Navy Editor Service

## UCMJ toughens punishment for spying

The Uniform Code of Military Justice has always provided stiff punishment for members of the armed forces who participate in espionage during wartime. Its mandatory sentence for service members convicted of "lurking as a spy or acting as a spy" — death.

But defense officials were concerned that the UCMJ didn't have enough bite when it came to acts of espionage committed during peacetime. In fact, the UCMJ made no specific reference to these crimes at all.

As a result, the same offense that demanded the death penalty during wartime was treated as a lesser crime during peacetime, with a maximum penalty of only 10 years' confinement.

The military law didn't even have the teeth of federal civilian law. Civilians convicted of peacetime espionage can receive up to life imprisonment.

Fueled largely by a highly publicized rash of espionage cases, Congress recently toughened the UCMJ to allow the death penalty in some cases of peacetime espionage.

The law is particularly strong in reference to service members whose activities compromise critical defense technologies. It specifies that the death penalty may be imposed if the accused is found guilty of an offense that directly concerns:

Nuclear weaponry, military spacecraft or satellites, early warning systems or other means of defense or retaliation against large-scale attack;

War plans;

Communications intelligence or cryptographic information; or strategy.

The law, explained L. Britt Snider, DoD director of security information, reflects the message that espionage is espionage, whether it happens in wartime or peacetime.

"Any secrets compromised and any technological lead lost — even during peacetime — ultimately affect the lives of our service members and the success of our forces in combat."

By Donna Bolinger  
American Forces  
Information Service



Cpl. D.M. Dolan photo

### Change of Command

Lieutenant Colonel B. Luby, the new commanding officer of HMM-165, (center), receives the squadron colors during a change of command ceremony on Dewey Square, May 8, from LtCol. T.A. Braaten, the former commanding officer, (l), and passes it to 1stLt. Rich Hilburn, squadron adjutant.

## SecDef approves Osprey development

The Secretary of Defense has authorized the Secretary of the Navy to begin full-scale development of the V-22 Osprey program, subject to incremental reviews by both the Navy and the Defense Systems Acquisition Review Council during the first quarter of FY-87.

The results of the reviews, including cost provisions, mission effectiveness and capability, will determine the continued development of the V-22.

The V-22 Osprey, formerly known as the JVX, is a multi-mission, multi-service, vertical take-off and landing aircraft for the 1990s and beyond. It represents a major technological breakthrough in aviation to meet both existing military needs and future civilian applications.

It will be capable of operations from various Navy ships, and operations from fixed bases, including unimproved landing sites.

The tilt-rotor aircraft combines the speed, range and fuel efficiency normally associated with C-130 or C-12

turboprop aircraft and the slow flight and hover capability of helicopters.

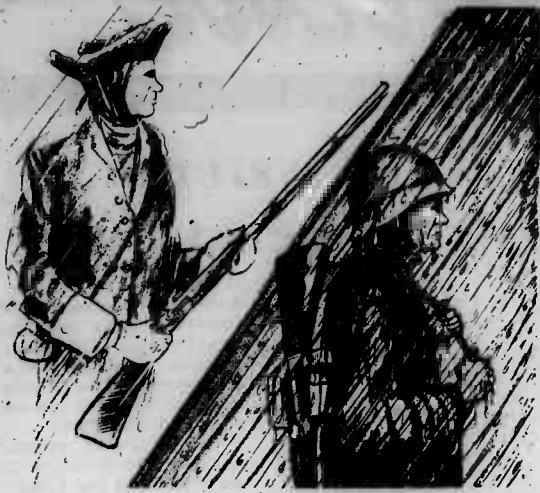
The Navy is the lead agency for the joint service program, and the team of Bell Helicopter Textron and Boeing-Vertol is the primary contractor for the program. The Osprey is now in research and development with a FY-87 budget request of \$391.8 million.

## Inside

Salutes	A-6
Religious Services	A-8
At A Glance	A-10
Sports Shorts	B-3
Island	
Happenings	B-4
What's Cooking	B-4
Special Services	B-5
Movies	B-5
Ticket Info	B-5

## Editorial

# 'This is my country, I believe in her'



"This is my country and I believe in her. I believe in her wisdom to make decisions and to choose the place and under what conditions I shall fight for her. If she's got ills, I'll hold her hand until she can put them right; but in the meantime, I'll protect her against all enemies, foreign and domestic."

A plaque bearing this creed hangs in a Pentagon hallway below a picture of the late Air Force Gen. Daniel "Chappie" James, the United States' first black four star general and a true believer in his country and its military services.

"I choose to be in the service of my country because I felt it was the best way I

could serve this great nation of mine," he once said. "And I consider myself very fortunate to call myself a practicing American and to try to demonstrate at every turn that I possibly can, that I consider this the highest honor afforded any man."

James celebrated Armed Forces Day every day of his 35-year military career. He knew the pride of wearing the uniform and the commitment military service demands.

He knew that Armed Forces Day is more than a day of picnics, parades and air shows. And few understand this as well as the men and women who serve today in the Army, Navy, Air Force, Marine Corps and Coast Guard.

While most of the country goes about enjoying Armed Forces Day festivities, many of these service members will remain on duty, ready to do whatever is necessary — and to make whatever sacrifice is required — to protect their country and its freedoms.

These men and women, the best and brightest troops this country has ever known, understand how critical they are to America's national security. They have risen to their country's calling with spirit and professionalism.

"As we ensure that the sacrifice of all who have fought and died for freedom in the past are honored, so let us honor the soldiers, sailors,

airmen and Marines today," said Secretary of Defense Caspar W. Weinberger.

"Their jobs are difficult, requiring judgment, technical know-how, endurance and in many cases, exposure to danger. We ask them to put in long hours, in distant climes, under difficult if not perilous conditions:

"We ask them to serve far from their families and frequently to miss cherished holidays at home; we ask them to be prepared to make the ultimate sacrifice for our nation.

"They deserve our eternal gratitude, for it is to them we owe our freedom and our future," Weinberger concluded.

## New DoD directive promotes smoking prevention programs

Health-minded service members will be getting more support than ever before. In addition to an anti-smoking campaign, a new DoD directive outlines the health promotion and education program for physical fitness, nutrition, alcohol and drug abuse, hypertension (high blood pressure) and stress management.

Some highlights of the health promotion program directive are:

- Smoking prevention and quitting programs aimed at creating an atmosphere that discourages tobacco use will be provided.

- Smoking will be prohibited in auditoriums, confer-

ence rooms and classrooms, buses, vans, elevators and, unless adequate space and ventilation to ensure a health environment is available for non-smokers, in eating areas and common work areas.

- DoD components will not participate with alcohol and tobacco manufacturers and distributors in promotional programs, activities or contests aimed primarily at DoD personnel. (However, military people will be allowed to run in races sponsored by the alcohol or tobacco industry for the general public.)

- Commanders are to consider integrating physical fitness regimens into normal work routines for military

personnel. The chain of command will support community fitness promotion activities.

- In military dining facilities, where feasible, calorie information will be made available. So will



reduced-fat, salt and-calorie meals. Concessions and vending machines should offer nutritious alternatives such as fresh fruit, fruit juices and whole grain products.

- Military physicals and annual dental exams will include hypertension screening. Each DoD medical facility will periodically offer mass hypertension screenings for all DoD beneficiaries.

- Education on such topics as alcohol and drug use during pregnancy, driving while intoxicated, adolescent alcohol and drug abuse, and misuse of alcohol and other drugs, with emphasis on eliminating illegal uses, will be required.

By Evelyn D. Harris  
American Forces  
Information Service

## Congress focuses on 'revolving door' concept

When Lee Iacocca left Ford Motor Company to work for Chrysler, it seemed like a natural move: a talented man taking his skills to another company in the same industry.

But take a military pilot experienced in military aircraft procurement, give him his retirement papers, and let him take a job with a defense contractor that produces aircraft parts. You have the makings of a potential "scandal."

The "revolving door" — the phenomenon in which DoD officials leave government service to work for a defense contractor — has attracted considerable attention on Capitol Hill and in the media. The concern is that some DoD officials, particularly those involved in procurement, are so busy trying to land lucrative jobs with defense contractors that they overlook their responsibility of ensuring that DoD gets the

highest quality products at the best price.

Critics of the revolving door question how likely a procurement officer is to challenge cost overruns, poor quality and late deliveries, when it might jeopardize a future job offer.

Pentagon officials have mixed opinions about the seriousness of the revolving door phenomenon and what should or should not be done to affect its spin. However, most agree that loopholes in the current law need to be tightened.

David Ream, an attorney for the DoD General Counsel, pointed out that the movement of individuals between the private sector and government service is a major strength of this country's democratic system — and of the Defense Department.

He pointed to the U.S. Statutes, in effect since 1979, that help ensure the DoD

procurement officials maintain a healthy arm's length distance from defense contractors.

These statutes: Permanently restrict former government employees, military or civilian, from serving as another person's representative to the government on an issue in which he participated "personally and substantially" while a government employee;

Place a two-year restriction from the time an employee leaves government service and the time in which he represents another person on an issue in which he had official responsibility during his last year of service;

Bar senior employees from representing anyone other than the United States before their former agency for a period of one year after leaving military service; Prohibit retired regular

military officers from selling supplies or defense materials to defense and related agencies for three years after retirement; and

Permanently restrict retired regular military officers from selling to their own former military departments.

These rules are enforced through a requirement that former military officers with 10 years active service at grade O-1 and up, and former civilians at grade GS-13 and up, must report if they worked for, or served as a consultant to, a major defense contractor.

This requirement was recently strengthened by the FY-86 Defense Authorization Act.

The prohibitions, defense officials pointed out, prevent officers and DoD employees from using their DoD procurement positions to land jobs with contractors. They also prevent these

former employees from influencing government agencies on matters they dealt with or for which they had responsibility while in government service.

What the prohibitions do not do — and what many defense officials fear other measures being considered by Congress would — is prevent individuals from continuing to work in areas in which they have developed skills.

Ream said DoD's ability to attract skilled and talented individuals into government procurement will suffer considerably if the field becomes a dead end with no opportunity for future non-government employment.

"Not only will the most capable young individuals fail to apply for entry-level positions, but it may become even more difficult to attract skilled scientists and businessmen for senior appointee positions," he said.

Ream recommended that any legislation being considered be narrowly crafted to focus on this area and not impose broad limitations on the employment opportunities of the vast majority of defense procurement officials whose behavior raises no propriety issues.

Department of Defense Deputy Inspector General Derek J. Vander Schaaf recently told Congress the revolving door is largely a problem of public perception.

"The numerous 'revolving door' cases reported over the years have left the public with a bad taste, reduced confidence in the institutions of government, and graphically pointed out the need for regulations and policies which deal with the perception of conflict of interest, as well as actual conflicts," he said.

By Donna Bolinger  
American Forces  
Information Service

## Credit history can follow you . . . forever!

You have to have credit before you can get credit. If you were turned down the first time you applied for a loan because you lacked a sufficient credit history, you're familiar with this "Catch-22" of the money business.

Credit can be an asset in using your money effectively and can even save you money if it's used properly. However, the convenience will cost you a finance charge, and you're getting a bad credit rating if you abuse it.

Chances are that you won't know the status of your credit until you're ready to make a major purchase, such as a car or house.

Your status as a good credit risk" will be a major

factor in convincing a financial institution to assist you with your purchase. Since the lender is taking a risk, you'll be required to fill out a loan application that will be used to evaluate your ability to repay the loan.

It's wise to consider carefully the reliability of the lender as well, and the terms and cost of the loan.

Lenders use a numerical system when evaluating these applications and apply points to factors they consider in rating you — such as length of employment in same position, potential to increase future earnings, length of residence, statements from character references and other signs of stability.

Based on their findings, they will rank you in a category specifying that you have either no credit, bad credit, or good credit or something in between.

If you have no credit, you might establish some by opening an account with a local department store. This type of charge account is known as non-installment debt. The balance will be due in 30 days, and if you do not pay the entire amount at that time, you may pay a minimum amount along with a finance charge and carry over the remainder of the balance to the next month.

Your finance charge will be based on one of three different computing methods: the previous balance method;

the average balance method; or the adjusted balance method. Different department stores use different methods. The one to avoid if possible is the previous balance method because it is the most costly.

Charge accounts do not require a down payment on the merchandise. You do not sign a formal contract, and unlike the case with many loans, the goods can not be repossessed if you fail to pay for them.

However, if you don't pay for your purchases, you are classified as a bad credit risk, and that label will cause you trouble for a long time.

The moment you obtained your first form of credit, whether a department store

charge account, a bank credit card or loan, a credit file is started on you at the local credit bureau.

The file indicates how you pay your bills — whether you pay on time, or past due 30-59 days, 60-89 days, or 90 days or more. If you default, which means you did not pay at all, this is recorded as well.

In addition to your local credit record, a nationwide computer system that is updated monthly stores the details firms need before granting you additional credit, employment or insurance. That means that if you abuse the credit you already have, that information will be available to potential creditors for the next seven years — or 14

years if you file for bankruptcy.

Good credit is important, not only so you can avoid the unpleasant consequences of having bad credit, but because it will help you to acquire the material things you need when you don't have the necessary cash. Most of all, your credit rating is a personal reflection of you, and how you manage money.

A few practices that will help keep your credit rating good: Make all payments when due; avoid unlicensed or otherwise unreliable lenders; and never borrow unless you are sure of your ability to repay the loan.

By Jacalyn W. Houston  
American Forces  
Information Service

Commentary

# Children need guidance, training

**EDITOR'S NOTE:** The following commentary was written by the wife of a Marine stationed at Kaneohe Bay who, from time to time, will be submitting articles for publication in the *Hawaii Marine* on a voluntary basis.

By Patricia Gail Sears

"Spare the rod and spoil the child" is a long-standing theory of discipline among many parents today. While this form of corporal punishment may seem to be an effective method of discipline, it can lead to serious problems.

Spanking is dangerous because it teaches children that the way to get attention is to misbehave. It also teaches them that violence is an acceptable way to deal with problems. According to an article written for *Parents*

magazine, by psychologists Edward Zigler and Nancy Rubin, an even more serious consequence of spanking is that "violence begets violence" in parents. Disciplinarians who resort to physical punishment are more apt to eventually abuse their children than those who do not.

Refraining from corporal punishment, however, does not mean giving up discipline. All children need guidance and training, as well as encouragement. They need to be taught acceptable behaviors and how to eliminate unacceptable ones. As Niles Newtown states in his book "The Family Book of Child Care," this training can best be given with firm guidance, understanding and compassion, rather than by physical force.

In order to accomplish this difficult task, parents must be aware of effective alternatives to physical

punishment. They must educate themselves about child development and parental roles. A wide variety of informative literature is available through clinics, libraries and bookstores.

In addition, many support groups, such as Parents Anonymous, are available and eager to help new and veteran parents with their endeavors to raise happy, well disciplined children.

Once parents decide to proceed on a course of nonviolent discipline, they must find new ways to obtain cooperation from their children... cooperation is the key. Next, definite steps to assure success with the new methods must be taken.

Making sure the child understands exactly what (s)he is expected to do, when, why and how (s)he is expected to do it is a good start. Parents can simply discuss these points with their children, and provide detailed instructions,

demonstrations and specific routines which will be helpful. Most importantly, parents must be consistent with their demands.

When a child responds positively to his parents demands, praising his acceptable behaviors and accomplishments is a useful tool to ensure additional cooperation. According to Dr. Fitzhugh Dodson, in his book "How To Parent," praise gives the child a sense of accomplishment which strengthens and enhances his self-esteem. However, for praise to be effective, it must be distributed genuinely and honestly among all children in the family... and it must be bestowed for small accomplishments as well as large ones.

In spite of praise and many other ways to get cooperation, sometimes children will misbehave. If the circumstance demands discipline, several effective methods can

be used. Taking away privileges, isolation and assigning an unpleasant task are just a few common methods.

When children misbehave, one of the most difficult obstacles parents face is controlling their anger. Most parents don't realize anger is a secondary emotion... a reaction to a first emotion; usually fear or frustration. When parents get angry, they should take a "time out" and get in touch with their real emotions. Only then, can they make rational decisions about discipline. Parents should remember that punishment is not discipline.

Punishment is directed toward the child; where discipline is directed toward behavior. The objective of good discipline is preventing "bad" behavior and encouraging "good" behavior while preserving the child's self-esteem.

Comparing a child who has been punished with one who

has been disciplined reveals positive results of using effective alternatives to physical force. A punished child is often inhibited, insecure, and tends to solve disputes by fighting. On the other hand, a disciplined child is often secure, confident and makes decisions based on fairness and compassion.

Whether a parent chooses to raise his child by discipline or by punishment, the task is not easy one; but according to Dr. Kevin Leman in "Making Children Mind, Without Losing Yours," it can be a rewarding experience if it is handled with the child's best interests in mind.

Using alternatives to the "spare the rod spoil the child" theory of discipline may not be the easiest way to raise children, but it seems the best way to teach children compassion and good moral values while preserving their self-esteem and happiness.

# Seat belts save lives—if they're used

Only 14 percent of Americans regularly wear their seat belts estimates the National Highway Traffic Safety Administration. Other sources are more optimistic in their figures, but all are below 50 percent.

Seat belts save lives, but only if you use them. In New York, officials report 170 fewer driver and passenger deaths in the first six months since it became mandatory to wear, 438 persons died versus an average of 608 fatalities per six-month-period over the past five years.

That statistic is more impressive when you consider that the law does not mean everyone obeys it. Drinking drivers are the least likely to buckle up; researchers in New York found that only 21 percent of bar patrons buckled up; 35 percent of other drivers strapped themselves in.

Time seems to lessen the impact of buckle-up laws as well. A survey in Michigan

found that in July 1985, right after a mandatory seat belt law went into effect, only 58 percent of front seat drivers buckled up. By December, the rate declined to 43 percent, which was an improvement over the state's pre-law rate of 20 percent, but well below full compliance.

"If you think seat belts are confining, try a body cast," states one safety poster. Seat belts not only save lives, but they can cut in half the chance of death or serious injury. The rate of facial fractures alone went down by two-thirds after a seat belt law went into effect in Sweden.

Seat belts offer protection from the "second," or "human," collision. When a car stops, people who do not wear seat belts will fly toward the point of impact, colliding with the dashboard, steering wheel or windshield.

Although some people still say they are afraid of being trapped inside a burning

car... fiery crashes are rare except to television," said North Carolina highway safety expert Patricia F. Waller.

Waller said that out of 3.5 million vehicles involved in crashes in her state, only 1,291 of those vehicles experienced post-crash fires. In only three instances was a belted driver killed in a crash involving fire. Experts analyzing these three accidents believe the drivers were dead before the fire started.

On the other hand, 72 unbelted drivers were fatally injured in post-crash fires, while 56 belted drivers survived.

Some people think seat belts are only for long trips. Fortunately, Marine Sgt. James Wilson is not one of them. Wilson was driving no more than 10 miles away from his quarters when his brand new car was struck by another.

The impact pushed

Wilson's car into oncoming traffic. The motorcyclist suffered a broken leg. Wilson, who always "automatically" wears his seatbelt, was physically unharmed. However,

his new \$14,000 car was a total loss.

"I look back now and thank God for my seatbelt. The instant of the crash, I

thought I had met my maker," Wilson said.

By Evelyn D. Harvis  
American Forces  
Information Service

## Navy Relief Fund Drive continues

By Sgt. Leah Gonzalez

As the Navy Relief Fund Drive continues and donations are collected, services offered by the Society continue to be stressed.

Although the Navy Relief will normally not do such things as make car payments, there may be a problem a servicemember cannot help which may merit a loan or grant.

One Marine had problems making his car payment and needed money for food and babysitting because his house had been burglarized. Because of this, his bank

account had been frozen.

After explaining his problem to a Navy Relief volunteer, he was informed that these were things normally not granted money for — but it was possible an exception could be made.

After verifying the problem with the filed police report and receiving a statement from the bank, the interviewer called Navy Relief Headquarters in Washington, D.C. She spoke to a caseworker who, after some discussion of the problem, approved the loan.

Because of the Navy Relief assistance, the Marine and



his family were helped. In order to keep funds available for problems such as these, the Society needs all possible contributions. To donate, contact your local representative.

## Red Cross needs your donations



For the first time in its 105-year history, the American Red Cross has exhausted the fund it uses to help disaster victims.

Major disaster operations conducted by the Red Cross since Sept. 2, 1985, include sheltering 897,000 men, women and children in more than 2,000 shelters and providing mass care feeding to more than four million people, as well as providing financial assistance to 31,365 families.

Since July 1, 1985 the Red

Cross has spent or committed more than \$48 million helping victims of hurricanes, flooding and mud slides in the continental United States and Puerto Rico. The recent wave of disasters has left the organization facing a \$14 million deficit.

To restore the emergency disaster fund and erase an expected deficit, the Red Cross is now engaged in a nationwide campaign to raise funds.

"We'll need about \$40 million in contributions to get

us through the year," said Robert Vessey, Red Cross director of disaster operations.

While there is no formal fund-raising drive within DoD to help replenish the disaster fund, DoD personnel and their families wishing to help can contribute to the Red Cross Services Office at their installation or directly to Red Cross headquarters at: American Red Cross, Emergency Disaster Relief Campaign, P.O. Box 37243, Washington, D.C. 20013.

## MILITARY PERSONNEL... \$31 from for 2

Visit neighbor islands at special hotel rates... Here's a great way to visit other islands at budget hotel rates. Use Hawaii's top hotel value, comfortable rooms in attractive and convenient locations.

KONA LAGOON Kona at Kona/From \$31	HILO HAWAIIAN Hilo/From \$35	MAUI BEACH Kahului, Maui/From \$40	MAUI PALMS Kahului, Maui/From \$31
KAUAI RESORT Waialeale, Kauai/From \$39	QUEEN KAPIOLANI Waikiki/From \$38	WAIKIKI HANA Waikiki/From \$31	

For reservations and information, see your travel agent or call Hawaiian Pacific Resorts 531-5235. From neighbor islands, toll-free 1-800-272-5275. Executive offices: 1150 S. King St., Honolulu, HI 96814.

**SAN DIEGO BOUND?**

**FREE Relocation Brochure**

**JOAN KIDDER**  
Multi-Million Dollar Producer

**Corky McMillin Realty**

Call Toll Free 1-800-525-8910 ext. 9961

**HARRY'S cafe & d'li**

**PARTY-PARTY-PARTY!**

New VEGIE-DIP TRAY just \$19.00

We now offer 9 beautiful Party Trays for small and large gatherings. Stop in and pick up our Party Tray Menu

and invite HARRY'S to your next PARTY!

**254-2277**

Open 10:00 A.M.-8:00 P.M. Daily Closed Mondays Aiea Shopping Center Next to Firestone

## FAMILY EYE EXAMINATION PLAN

Includes All Immediate Family Members **\$39**

CHAMPUS Participant

SOFT CONTACT LENSES From \$79

PRESCRIPTION GLASSES From \$49

NEW! NOW AVAILABLE! TINTED Extended Wear & BIFOCAL Soft Contact Lenses Satisfaction Guaranteed

A Contact Lens Eyes include Lenses, Care Kit Follow-up Care and 90 DAY TRIAL PERIOD

COMPLETE PROFESSIONAL VISION SERVICES DEDICATED TO QUALITY AND SERVICE IN VISION CARE

**Dr. Charles Dean**  
Optometrist

KAILUA  
139 Hekili St.  
261-9735

MasterCard

# SAR - always on stand-by

Story and photos  
By LCpl. Hugh Trask

During last week's tsunami warning, an Air Station Squadron was on stand-by alert — prepared to put two helicopters in the air, with a five-minute notice, with rescue equipment and a corpsman.

If the tsunami had devastated the Hawaii coastline, SOMS' Search and Rescue Department would have rendered whatever assistance possible to save the lives of military personnel and their families.

The SAR crews are normally on stand-by alert prepared to fly on five minutes notice; during the weekend, when the airfield is closed, the SAR teams can have their helicopters flight ready in two hours. The teams are activated in the event of natural disasters. During last week's tsunami

warning, two SAR helicopters patrolled the coastline from Waimea Falls to Hanauma Bay, flying for an hour and 50 minutes. While the helicopters patrolled, SOMS advised aircraft scheduled to land here of the tsunami situation.

If large tsunami waves had actually struck, the SAR teams would have rescued military personnel first; once the teams had taken care of them, they would have taken orders for the Joint Rescue Coordination Center operated by the U.S. Coast Guard for civilian rescue operations.

While patrolling the coastline, the SAR Marines would warn anyone on the beaches to seek higher land by using their loud speaker system.

The SAR birds are equipped with horse collars, a device placed under a person's arm pits and around their body which is attached to a winch; a Ford-S penetrator, a device with three seats capable of holding three people being pulled into the helicopter; a BUGH net,

an enclosed basket which someone can crawl into; a litter and assorted equipment such as cable cutters, flares and a first aid kit.

The equipment, according to Capt. Vinne Bousa, SAR officer, coupled with the SAR crew's experience, combine to create a powerful countermeasure to natural disasters.

"We had a full-day mission back in the beginning of March," added Bousa. "We were involved in a search for a downed Cessna airplane in the Molokai Channel. Then in October 1985, we rescued two adults and three kids after their boat sank off of Mokapu Peninsula."

**EDITOR'S NOTE:** SAR crews are on stand-by alert seven days a week, prepared to aid victims in an event of natural disaster. As with tsunamis, SAR teams are also equipped to handle hurricane disasters. For story, see page A-5.

Sergeant Chris Espinoza, a SAR helicopter crewman, scans the ocean for signs of the tsunami wave.



Corporals Joe Schaer (l) and Gerry Bouska, SOMS helicopter mechanics, check the helicopter's exhaust flange.



Corporal Rick Johnson (l) and LCpl. Bill Beehler, SOMS' SAR helicopter crewmen, wait for word to be given to take off and patrol the coastline.



As the Marines of "C" Battery, 1/12 watch, an HMH-463 CH-53D helicopter lifts a 105mm howitzer.

## HMH-463 'lifts' 1/12

By LCpl. Hugh Trask

A helicopter from HMH-463 hovered over a field of scrub brush and weeds while Marines of 1/12 watched the CH-53D lift a 105mm howitzer like a shoe on a string.

The external lifts of four 105mm howitzers was a part of Helicopter Support Training conducted recently by Capt. S.A. Bennet and 1st Lt. D.R. Farren in Hawaii. The event supported rapid mobility training for "C"

Battery, 1/12, and practiced external transport of heavy equipment by the 1st MAB's only heavy helicopter squadron.

The external lifts also supported a company of soldiers from Nepal's 1st Battalion, 7th Duke of Edinburgh's Own Gurkha Rifles, homebased in the New Territories of Hong Kong. The Gurkha soldiers trained with Marine units here.

"The howitzers were pretty light; they only weigh about 5,000 pounds, which is only half of our capacity," said Bennet. "Normally, we would

pick up guncrews and ammunition. With them, we're pretty close to our maximum weight capacity."

According to Bennet, external lifts are a common job for CH-53Ds. "We do them often, but they provide us with the chance to train our aircrews and copilots in precision placement of lifted equipment; besides, it helps out the Marines of 1/2," added Bennet.

"It also teaches ground crews how to attach cables to the Howitzers and where they should be placed so we can pick them up," Bennet said.

# Hurricane season starts in June

By LCpl. Hugh Task

With June just around the corner, the hurricane season will soon begin here and continue through December; Hawaii residents should prepare themselves for the worst.

With the aid of modern detection and tracking devices, the National Weather Association can provide 12 to 24 hours advanced warning. Severe weather conditions that accompany hurricanes could subject the Hawaiian Island chain to over 130 mph winds; storm surges; a water dome up to 50 miles wide that sweeps across the shore near the eye of the storm; and heavy flooding.

Hurricanes combine three major natural hazards into one violent, slow-moving body. To be classified as a hurricane, weather conditions must include winds of at least 74 miles per hour; torrential rains that can cause flooding far inland; and abnormally high waves and tides, called storm surges.

These elements by themselves are usually not dangerous, but combined they can cause extensive damage to property and even cause loss of life.

In Hawaii, hurricane winds, aided by the contours of hills and valleys, can damage trees, vegetation, crops and homes. Heavy and prolonged rainfall over steep hillsides can also cause landslides and severe flash flooding.

Swells moving ahead of a hurricane can reach island shores while the storm itself is still several hundred miles out to sea. As the hurricane nears the coastline, rising water levels from abnormal storm tides and high, wind-driven waves flood coastal areas, erode beaches and devastate waterfront buildings, highways and other structures.

In the past 50 years, two hurricanes have struck the Hawaiian Islands; Hurricane "Dot" struck in August 1959 and Hurricane "Iwa" hit in November 1982. Both storms damaged Kauai the most, although Oahu had significant damage — Iwa caused \$250 million in wind and water damage before defusing.

When a hurricane approaches Hawaii, TV and radio stations will be reporting weather advisories they receive from the National Weather Service in Honolulu. During normal weather conditions, the

forecasts are given every six hours, beginning at 5 a.m.

During a hurricane, advisories are sent to TV and radio stations every three hours with the location and characteristics of the storm. During an approaching storm, the National Weather Service will issue a hurricane watch or a hurricane warning.

A hurricane watch is issued if chances exist that coastal or inland communities will be threatened by hurricane conditions within 36 hours or less. A hurricane warning is issued when a high probability exists that hurricane force winds of 74 mph, or more, will strike in 24 hours or less.

Once winds — identified by a hurricane warning — reach

the coastline, electricity, fresh water, gas and telephone utilities can be affected or interrupted.

Tree limbs and palm fronds could fall across overhead electric lines or two lines could be blown together causing a short during periods of heavy winds. When this happens, a circuit breaker automatically trips,

causing a black out for that part of the system.

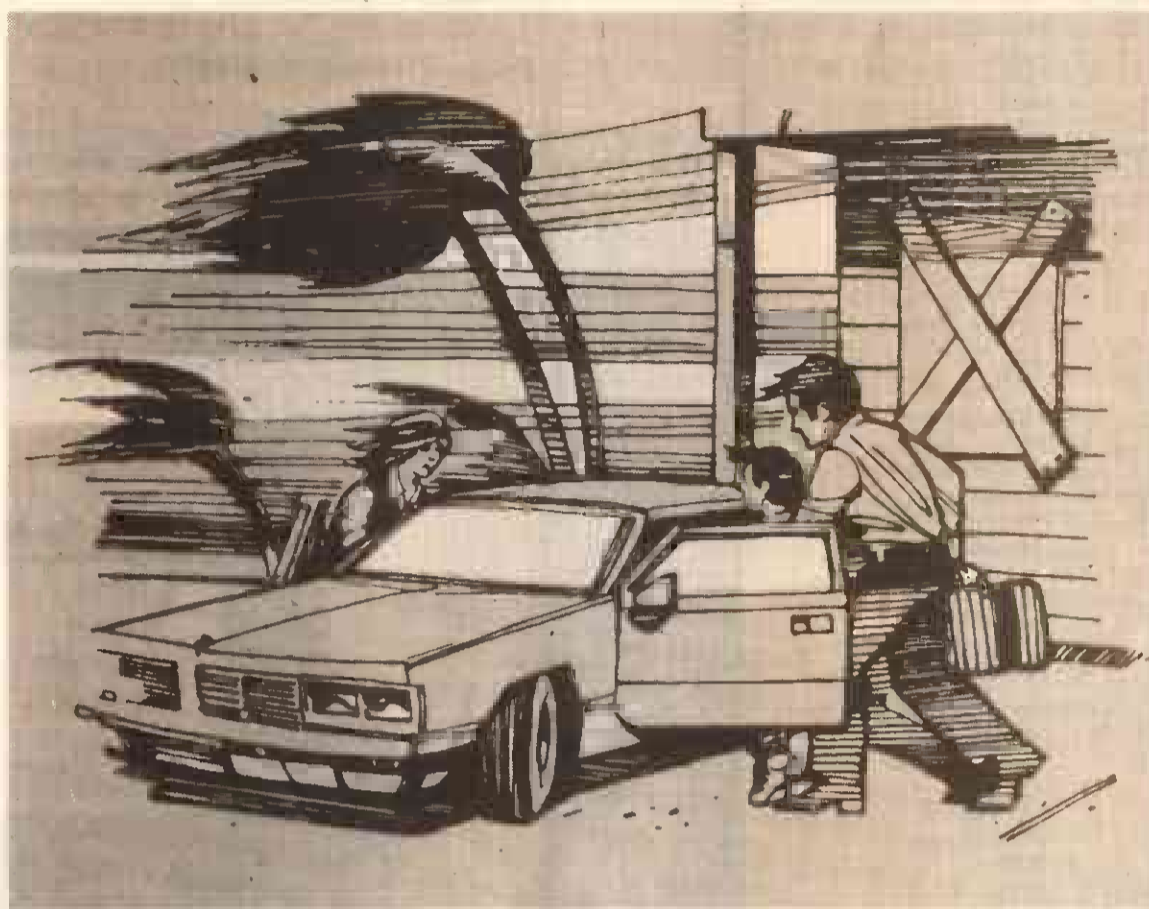
During a hurricane, water conservation becomes a must as heavy rain can overload or destroy water pipelines. If you are notified that you are in the hurricane's direct path, those who use tanks should shut off their gas at the tank and meter patrons should turn it off at the meter. Because gas pipelines are buried there should be no disruptions.

People should limit the use of their telephones to emergency calls only. Overloading telephone lines will slow down the entire system.

Although use of the telephone should be limited, in April the National Weather Service instituted a Hurricane Hotline to provide up-to-the-minute information on Pacific storms for the general public; the number, 1-900-410-CANE, costs 50 cents for the first minute and 35 cents, plus tax, for each additional minute.

The 900 number can handle 1,000 calls from Hawaii while simultaneously taking 8,000 calls from the mainland and other Pacific countries.

Further information on the hurricane season can be obtained from the Station Weather Office, SOMS, at 257-2839, or by calling the Civil Defense Office in Honolulu at 523-4121.



Greg Yamamoto, Honolulu Advertiser

## Preparation is key to surviving storms

By LCpl. Hugh Task

Preparation for the hurricane season could mean the difference between going without food, fresh water and lights during a storm, or making what can be days of waiting a bearable experience.

The Civil Defense in Hawaii publishes lists of articles people should stockpile before the hurricane season begins. The lists range from food and family records to those items needed for survival.

The following lists of food and equipment will enable people in a hurricane-hit area to prepare meals for two people for a five-day period. These items do not require refrigeration (in case electricity is interrupted) and most foods were selected because of their convenience and shelf-life. A few items have a short shelf-life, but add variety to meals. And if electrical power is lost, refrigerated foods should naturally be used first.

Item	Amount	Shelf-Life
Non-fat dry milk	1 box (12 1-qt. env.)	6 months
Tuna	1 can (6½ oz.)	12 months
Beef stew	1 can (24 oz.)	18 months
Chili with beans	2 cans (15½ oz.)	18 months
Red or pink salmon	1 can (8 oz.)	12 months
Vienna sausage	2 cans (5 oz.)	18 months
Canned meat	2 cans (12 oz.)	18 months
Corned beef hash	2 cans (15 oz.)	18 months
Corned beef	2 cans (12 oz.)	18 months
Deviled ham	2 cans (4½ oz.)	18 months
Pork and beans	2 cans (16 oz.)	18 months
Chunked chicken	1 can (12½ oz.)	18 months

Condensed soups	4 cans (10½ oz.)	12 months
Assorted fruits	9 cans (16 oz.)	18 months
Assorted vegetables	5 cans (16 oz.)	18 months
Assorted fruit juices	10 cans (12 oz.)	18 months (citrus 12)
Seedless raisins	1 box (15 oz.)	12 months
Instant hot cereal	1 box (10 oz.)	24 months
Cold cereal	1 box (20 oz.)	12 months
Soda crackers	2 pkg. (13 oz.)	1-2 months;
Rice	32 oz.	24 months
Cookies	1 pkg.	1-2 months
Salad oil	1 pt.	3 months
Granulated sugar	16 oz.	24+ months
Hard candy, gum	As wanted	18 months
Jelly	1 jar (16 oz.)	12 months
Instant orange drink	1 jar (18 oz.)	24 months
Instant coffee	1 jar (4 oz.)	18 months
Instant tea	1 jar (2 oz.)	18 months
Non-dairy creamer	1 jar (6 oz.)	18 months
Salt	As wanted	indef
Pepper	As wanted	indef
Curry powder	As wanted	indef
Peanuts	1 jar	12 months
Mustard	1 jar (6 oz.)	indef
Catsup	1 btle (14 oz.)	indef
Soft drinks	1 six pack	12 months
Peanut butter	1 jar (18 oz.)	9 months

Because water and electricity can be interrupted during a hurricane, disposable plates and silverware, hot and cold beverage cups, paper napkins, manual can openers, trash bags, a camp stove with 5 days of fuel, matches in a water

proof container, and heavy duty aluminum foil should always be kept in store.

Every family has important papers that need to be protected during a hurricane. These documents should be kept in a watertight container. The documents include but are not limited to:

Insurance, vehicle ownership, tax and medical records; credit card numbers; deeds; birth certificates; passports; marriage licenses; bank books; and social security numbers and records.

Also, stock and bond certificates; certificates of deposit, phone numbers of relatives and friends; irreplaceable photographs; wills; naturalization certificates; and immunization and school records.

These records should be kept in an easily accessible place in case of evacuation or in a safety-deposit box at a bank.

Every home should have a survival kit, not only in case of emergencies like hurricanes, but also for general power outages. The kit should include:

A battery-powered portable radio; flashlights with spare batteries; first aid kit; special medicines; containers of water; sleeping bags or blankets; toiletries and sanitary items; and changes of clothing.

When told to evacuate, people should take with them food for three meals, blankets and personal items such as medicines to be used at the evacuation center or shelter.

Other items that should be kept in case of an emergency include: masking tape for windows; an ice chest; fuel for stoves, hibachis or lanterns; candles and matches; and extra pet food.

# Salutes

**EDITOR'S NOTE:** Salutes recognizes individuals for their achievements and exceptional performance and welcomes new arrivals to Hawaii. This information is compiled by the Unit Information Officers in conjunction with Fleet Home Town News Releases submitted to the Joint Public Affairs Office.

Cpl. J.R. Fisher  
Cpl. P. Mevs  
Sgt. B. Toa

**Good Conduct Medals**  
LCpl. T.M. Pentecost  
Cpl. M.J. Battenfeld  
Cpl. E. Morales  
SSgt. W.T. Arthurs  
GySgt. A.D. Nelson

**Letters of Appreciation**  
Pvt. J.D. Harden  
PO2 L. Davis  
LCpl. M.C. Emmons  
LCpl. N. Johnson  
LCpl. L. Curtis  
LCpl. R.M. Blak  
LCpl. R.R. Hewitt  
PO1 C.K. Cartwright  
Cpl. I.A. Walle  
Cpl. M.A. Taylor  
Sgt. K.R. Finley  
Sgt. E.C. Hall  
Sgt. G.L. Briddell  
SSgt. A.A. Rogier  
GySgt. W.F. Mullis  
Col. F.P. Abbott

**CommSuppCo.**  
Welcome Aboard

LCpl. J.W. Norton  
LCpl. S.D. Gray

**Promotion**  
LCpl. F. Duncan

**Meritorious Promotions**  
Sgt. M.T. Thompson  
Sgt. A.S. Brown

**Good Conduct Medals**  
LCpl. J.W. Norton  
LCpl. D.G. Klaba  
Cpl. R.T. Steward

**Meritorious Must**  
LCpl. T.J. McCabe

**Certificate of Commendation**  
Sgt. M.T. Thompson

**1st Bn., 3d Marines**

Welcome Aboard

Pvt. J. Munn  
Pvt. J. Boyd Jr.  
PFC S.C. McGovern  
PFC A.J. Linsley  
PFC R.A. Felton  
PFC J.D. Maddox  
PFC V.D. Dobbins  
PFC G.A. Tate  
PFC M.V. Ponce  
PFC B.K. Peterson  
PFC J.S. Kurlunge  
PFC F.H. Diaz  
PFC D.S. Beckstead  
PFC R.A. Harmonter  
LCpl. R.T. Polvador  
Cpl. M.L. Wilkey  
Cpl. A. Markowich

**Meritorious Musts**

LCpl. R.L. Jones  
Cpl. N.D. Rodriguez  
Sgt. B.U. Abulayan  
Sgt. S. Silva  
Sgt. C.F. Lagajeno

**Letters of Appreciation**

Cpl. M. Rampel  
Cpl. T. Robinson  
Cpl. J. Shaw

**Certificate of Completion**  
Cpl. S.L. Hershberger

**Promotions**  
LCpl. A.A. Maric  
LCpl. J.D. Maddox

**HdqCo., 3d Marines**

**Promotions**

PFC D.D. Sides  
LCpl. S.H. Jones  
**Meritorious Promotion**  
Sgt. H.T. Jones

**Welcome Aboard**

LCpl. M.J. Lezenby  
Cpl. G.O. Hucks  
Cpl. R.L. Jennings  
Cpl. R.D. Lucero

**MACS-2**

**Promotions**

LCpl. J.A. Mello  
Sgt. G.S. Welch  
Sgt. K.W. Jarrett  
1stLt. J.A. Peterson

**Welcome Aboard**

1stLt. R.H. Snyder

Continued on A-7

No more waiting in line  
— with Direct Deposit.

## KATHLEEN L. DURANTE, M.D.

COMPREHENSIVE CARE FOR  
INFANTS, CHILDREN, ADOLESCENTS

HMSA/CHAMPUS Participant

263-6623

Kailua Professional Bldg. 1

30 Aulike St.  
Kailua, Hawaii

After Hours:  
988-2188

Suite #201  
Kailua Prof. Bldg. 1



Neck Pain? Backache?  
Don't Suffer Needlessly!

### Pacific Chiropractic

TRAINED IN  
5 RECOGNIZED  
TECHNIQUES  
INCLUDING  
"LOW FORCE"



DR. JEANNE MICHAELS  
R.N. DC.

COMPLETE  
PHYSICAL  
EXAM

X-RAY  
FACILITIES

COMMON SYMPTOMS:  
• BACK PAIN  
• HEADACHES  
• NECK PAIN  
• ARM & LEG PAIN  
• JOINT PAIN  
• MUSCLE SPASMS  
• NUMBNESS  
• PINCHED NERVES

SPECIALIZING IN:  
• ON THE JOB INJURIES  
• AUTO ACCIDENTS  
• SPORTS INJURIES  
• CHRONIC & DIFFICULT CASES  
• GENERAL PRACTICE  
• FAMILY CARE PLAN  
• PERSONALIZED CARE

261-0831

602 KAILUA RD. NO. 207, KAILUA  
(between Cornet & Hardware Hawaii 2nd floor rear)  
NO CHARGE FOR BRIEF SPINAL ANALYSIS

Don Shula.  
Successful coach.  
Veteran traveler.



"The military wins big on this scoreboard."

## THE SCORE

On Northwest Orient Fares From Honolulu

BOSTON (BR30)	\$279	MILWAUKEE (BR30)	\$259
CHICAGO (BR30)	\$259	MPLS./ST. PAUL (BR30)	\$239
CLEVELAND (BR30)	\$279	NEW YORK CITY (BR30)	\$279
DETROIT (BR30)	\$259	PHILADELPHIA (BR30)	\$279

Fares shown are each way based on a round-trip purchase and apply for travel from June 7-December 19, 1986 on Tuesdays or Wednesdays only. Fares slightly higher on other days. One free stopover permitted in Los Angeles, San Diego, San Francisco or Seattle in each direction. Reservations must be made and tickets purchased at least 14 days prior to departure. Fares are subject to change.

Low fares like these—to 73 cities in 16 countries—are one reason why Northwest Orient serves more military people in the U.S., Europe and the Orient than any other airline. Some restrictions apply. For details, call your travel agent, on-base SATO, or Northwest Orient at (800) 225-2525.



**MILITARY SPECIAL!**  
Only \$11 per person, with military ID. Cocktail show only. For reservations call 922-6408 or 923-0711. Tickets also available at all base ticket outlets.

**PLAYBOY'S**  
Girls of Rock & Roll

The girls are gorgeous! The music is sensational! The comedy is hysterical! Don't miss the Playboy's Girls of Rock & Roll Revue!

Two shows nightly (except Sunday) 8:30 and 10:30 p.m.

**Outrigger**  
MAIN SHOWROOM  
2335 Kalikau Avenue  
Across from the International Market Place

For reservations call 922-6408 or 923-0711

HERE'S SOMETHING SPECIAL from Rob Roy's  
In the center of Kailua

Succulent **PRIME RIBS OF BEEF**  
Finest beef, thick, tender, juicy and just the way you prefer it.  
**\$12.95**

**SHRIMP CURRY**  
With our own sauce seasoned to perfection. Condiments you'll love.  
**\$8.50**

**SHORT RIBS**  
Korean Style  
Prime ribs with a delicious Oriental sauce.  
**\$8.95**

**SCAMPI**  
Large shrimp sauteed in butter garlic & a pinch of herbs  
**\$11.95**

... and many more, all with soup or tossed green salad, potatoes or rice, roll and butter.

**Rob Roy's**  
26 Hoolai Street  
Open from 6:30 A.M. daily  
262-6992

**Carpet, Blinds & Drapes SAVE UP TO 50%**

# Spring Decorating SALE

**SHOP WITH CONFIDENCE!**  
A Kamakua Company  
Celebrating its 12th Anniversary!

**100% NYLON MULTITONE HI-LO** 7.99 sq. yd.  
• Very Durable  
• Super Value!  
• Compare at 11.99

**Springtime Specials**

**INDOOR/OUTDOOR LEVEL LOOP** 7.99 sq. yd.  
• Ideal For Heavy Traffic Areas  
• Easy Maintenance  
• Compare at 15.99

**SOLID SAXONY PLUSH PILE** 7.99 sq. yd.  
• Elegant Texture  
• Highlighted Color Selections  
• Compare at 13.99

**MULTICOLOR LINT-FREE PLUSH** 8.99 sq. yd.  
• Exciting Color Combinations  
• Long Wearing  
• Compare at 15.99

**SOFT SAXONY PLUSH PILE** 9.99 sq. yd.  
• Super Colors  
• Super Pile!  
• Compare at 17.99

**100% NYLON BERBER PILE** 9.99 sq. yd.  
• Outstanding Durability  
• Ideal For Frequently Used Areas  
• Compare at 15.99

All prices include carpet only. Pad and professional installation is available.

**Custom Drapery**  
Simply a timeless window treatment that's always in style. Many styles and colors to choose from.

**SAVE 30%**

**AMERICAN CARPET COMPANY**  
GET AN ADDITIONAL 4% BONUS WITH THIS COUPON  
Offer expires May 24, 1986

**AVAILABLE AT THE MAIN STORE ONLY!**  
**CARPET REMNANTS SAVE UP TO 69%**  
Hundreds to choose from at super low prices!

**KEIKI-SIZE REMNANTS**  
Perfect for hallways or dens!

12x3 Level Loop	\$39	142
12x8 100% Nylon Pile	\$67	129
12x18 Saxony Pile	\$109	109
12x7 Plush Pile	\$93	139

**ROOM-SIZE REMNANTS**  
Great for your livingroom, bedroom or any room!

12x9 100% Nylon Hi-Lo	\$110	159
12x10 Multi-color Cut-N-Loop	\$173	179
12x12 Level Loop Pile	\$179	179
12x18 Saxony Pile	\$199	199
12x16 100% Nylon Cut-N-Loop	\$179	149
12x18 100% Nylon Plush Pile	\$336	168
12x20 Short Plush Pile	\$266	133

**KING-SIZE REMNANTS**  
Big enough for large playrooms or familyrooms!

12x24 100% Nylon Pile	\$279	1139
12x24 Saxony Pile	\$448	223
12x30 Multi-color Cut-N-Loop	\$599	279

Come In To See Our Entire Selection!

**AMERICAN CARPET COMPANY**

Reg. Store Hours: Mon-Fri 9AM to 7PM, Saturday 9AM to 5PM, Sunday Closed

Sale ends May 24, 1986

**MAIN STORE**  
302 Sand Island Access Road  
Ph. 847-4887

**WINDWARD STORE**  
45-582 Kamehameha Hwy.  
Ph. 235-7512

From A-6  
**MABS-24**  
 Welcome Aboard  
 PFC T.W. Flynn Jr.  
 LCpl. A.H. Rosenbohm

LCpl. E.T. Frey  
 Cpl. J.D. Scharpe  
 Cpl. G.D. Marcus  
 SSgt. K.I. Boucher  
 MSgt. J. Bustamante Jr.

**Promotion**  
 1stLt. W.A. Loughridge  
**Certificate of Achievement**  
 Cpl. L. Sayles

**HMM-265**  
**Promotions**  
 Cpl. J.R. Buehre  
 Cpl. J.W. Madden  
 Cpl. J.A. Novello  
 Sgt. M.F. Hayes  
 Sgt. P.G. Jewett  
 Capt. E.W. Bingham  
 Capt. A. Lemishko  
**Navy Achiev**     **1st Merit**  
 1stLt. R.J. Spragg

**Good Conduct Medal**  
 Cpl. H.G. Anderson  
**Marine of the Quarter**  
 Cpl. G.B. Cross Jr.

**Meritorious Mast**  
 LCpl. M.R. Collins

**Camp H.M. Smith**  
**Welcome Aboard**  
 PFC C.H. Hunter Jr.  
 PFC J.M. Lane  
 PFC J.K. Russell  
 PFC M.W. Catfell

LCpl. L.A. Epps  
 LCpl. T. Bullock  
 LCpl. D.R. Martin  
 Cpl. J.A. Martin  
 Cpl. S. Balzek  
 Cpl. K.S. Tolbert  
 Cpl. M.J. Shawback

**Promotions**  
 Cpl. A. Navarro Jr.

Cpl. D.J. McClure  
 Sgt. J. Swinney

**Reenlistment**  
 Cpl. D.P. Phipps Jr.  
 Sgt. J.A. Landry  
 GySgt. H.T. Farley

**Good Conduct Medal**  
 Cpl. K.J. Eubanks



LCpl. Hugh Frash photo

**Reenlistment**

Corporal Jack L. Hope (r), a helicopter crewchief with HMH-463, reenlisted for four years, a choice of duty station, and bonus, during the squadron's recent deployment at Barking Sands, Kauai. LtCol. D.P. Pender, 463's commanding officer, administered the oath of enlistment.



Ocean views. Garden setting.  
 Hawaiian music. Fabulous feast.

**It's another Aloha Friday in the Hale Koa Room.**

A tradition is renewed. In a cool garden setting by the sea, vast buffet tables are filled with fresh island fruit, garden and seafood salads, steamed clams, crab legs, roast baron of beef, and such local favorites as kalua pig, lau lau, oriental chicken and more.

It's the Aloha Friday Luncheon Buffet, better than ever in the recently remodeled Hale Koa Room, every Friday from 10:30 a.m. to 1:30 p.m. We welcome groups, so join us when you're ready for a party or celebration.

Price: \$9.95 per person, plus gratuity.  
 For reservations, please call 955-0555.

**HALE KOA HOTEL**

Armed Forces Recreation Center  
 2055 Kalia Road, Waikiki Beach  
 Honolulu, Hawaii 96815

A new dawn in moving services...



**Economy Movers**

"concentrating on moves big movers don't want"



Featuring... personalized home and condo service to all Domestic and International points. (sorry... no local moves)

- Lowest Minimum Rates
- Customized Service (pay only for services desired)
- Free Estimates
- Most Experienced Packers in Town
- Special Handling on all Art Objects
- Fully Insured

Call now for your free estimate... 834-7600

**Economy Movers**  
 3040 Ualena Street  
 Honolulu, Hawaii 96819

Sun Freight Systems, Inc.

**COUPON**

**5% DISCOUNT**

Call for your free estimate before June 1, 1986 and receive a 5% discount on your move. Coupons must be presented to the estimator at the time of estimation.

Call Now... 834-7600

**Economy Movers**  
 3040 Ualena Street Honolulu, Hawaii 96819

**Swap meet to be held**

A Swap Meet will be held behind the YMCA building tomorrow from 9 a.m. to 2 p.m. Sellers call to reserve space. Admission is 25 cents.

**WATERBEDS**  
 New Complete W/  
 Bookcase & Headboard  
 \$249 w/terms  
 Aqua Wood 486-3288

We're celebrating our first anniversary



**Plush Pippin Week**  
 Breakfast Special  
**99¢**

All You Can Eat  
 Spaghetti Dinner & Garlic Bread  
**\$4.95**

**May 18 thru 24**  
**SPECIAL BIRTHDAY DRAWING WIN!**  
 1st. Prize Trip for 2 any Hawaiian Island.  
 2nd Prize Eel Skin Attache Bag  
 3rd Prize 6 Month Pie Certificate



108 HEKILI ST., KAILUA  
 Kailua Town Center (Next to Foodland)  
 Enter our drawing. Fill out the entry form and drop it off at our store. Open 7 days a week. No purchase necessary.

Name: \_\_\_\_\_  
 Address: \_\_\_\_\_  
 Zip: \_\_\_\_\_ Phone: \_\_\_\_\_

**WINDWARD MALL**

**NOT BIGGER...**

**JUST BETTER!**



Kam Hwy. & Haiku Road  
 Kaneohe

## Religious services

### MCAS Kaneohe Bay 257-3553/3506 Weekdays

11:45 a.m. — Catholic Mass  
**Saturdays**  
 8 p.m. — Catholic Mass  
 7 p.m. — Catholic Confession Reconciliation  
**Sunday**  
 7:30 a.m. — Catholic Mass  
 8:30 a.m. — Protestant Liturgical Communion  
 9:30 a.m. — Protestant Sunday School  
 9:30 a.m. — Catholic Mass  
 10:15 a.m. — Catholic CCD Classes  
 11 a.m. — Protestant Worship  
 1 p.m. — Samoan Congregation  
 6 p.m. — Protestant Gospel Worship service

The Station Chapel is located in the right rear corner of the Marine Corps Exchange, building 1090. Sunday School and CCD are held in the pre-school area, building 1391.

### Camp H.M. Smith 477-5098

**Sunday**  
 8 a.m. — Catholic Mass  
 9:30 a.m. — Protestant Worship  
 9:30 a.m. — Protestant Sunday School

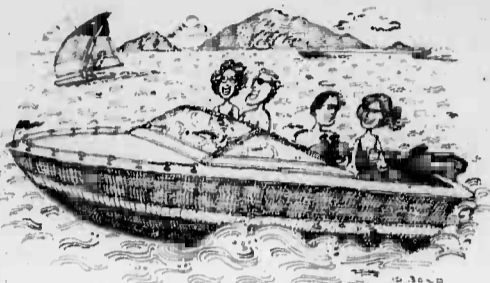
### Monday 11:30 a.m. — Bible Study

**Wednesday**  
 6:15 — Prayer breakfast  
 7 p.m. — Choir rehearsal  
**Friday**  
 11:30 a.m. — Catholic Mass

### Aloha Jewish Chapel Pearl Harbor 471-0050

8 p.m. — Shabat  
**Saturday**  
 9:30 a.m. — Shabat and Torah Study

# FUN FUNDS.



If you've got vacation fever, we've got the funds. Just stop in and talk to the boss at Beneficial. The Beneficial manager knows your needs. And will work with you to get you the money. Usually in just 24 hours. So go ahead — plan your fun. Then talk to the boss about getting the funds.

The boss is in at the following locations:

<b>AIEA</b> 99-185 Moanalua Road 488-6818	<b>WAIHAWA</b> 554 Olive Avenue 621-8451
<b>HONOLULU</b> James Campbell Building 826 Fort Street Mall 533-4202	<b>WAIKAPU</b> Waipahu Shopping Plaza 91-300 Farrington Highway 677-3151
<b>KANEHOE</b> 15-955 Kanehameha Highway 247-2156	

Phone today for a FREE brochure and loan application



**Beneficial**

1956 B.M.C.

Talk to the manager, and you're talking to the boss.

## WINDWARD ENLISTED CLUB KMCAS

PRESENTS AN

# ALL DAY PIG PICKIN'

Saturday, May 17th

Also Featuring

**Clay Bowser, Arlin Wentz, and the Goodnight Trail!**

**The Budweiser Clydesdales Hayride And Live Entertainment starts outside at 12 noon! Plus: Horseshoe Tournament, Buffalo Chip Throwing, Potato Sack Races and Much, Much More!**



Starring "Jack Reeves"

## All Ranks Welcome!

The Chow starts at **4PM** featuring: BBQ Chicken, corn on the cob, Cole Slaw, Macaroni Salad, Potato Salad, Tossed Salad, Corn Bread and **ROASTED PIG!**

**\$6.00 ALL YOU CAN EAT!**

**\$1.00 OFF**

ONLY ONE (1) COUPON PER PERSON.

WINDWARD ENLISTED CLUB KMCAS

TICKETS INCLUDE: Live Entertainment with Four Live Country & Western Bands!

## THE WINDWARD ENLISTED CLUB & HAWAII INTERNATIONAL PROMOTION

### CHAMPIONSHIP WRESTLING

KMCAS FRIDAY, MAY 16, 1986



#### DOUBLE MAIN EVENT

**ROCKY "SOULMAN" JOHNSON**  
New York (250 lbs.)

**VS.**

**VICTOR RIVERA**  
Puerto Rico (245 lbs.)

**JIMMY "SUPERFLY" SNUKA**  
Fiji Islands (240 lbs.)

**VS.**

**GERRY MONTI**  
San Francisco (245 lbs.)

**CORPORAL CLINT TERRELL**  
Arkansas (225 lbs.)

**VS.**

**BRUISER STEVENS**  
New Zealand (270 lbs.)

**ALEX SMIRNOFF**  
Russia (275 lbs.)

**VS.**

**DOUG HUI**  
Hawaii (250 lbs.)

ALSO ON CARD: SANDAN SAM • MASKED HANGMAN • THE FALCON • MR. FLORIDA • SPECIAL GUEST APPEARANCE BY PRINCE NEFF MAIWA • GUEST RING ANNOUNCER KING "RIPPER" COLLINS! DOORS OPEN AT 7 P.M. EVENT STARTS AT 8 P.M.

**\$7.00 PER PERSON**

NO RESERVED SEATS  
 CHILDREN UNDER 16  
 MUST BE ACCOMPANIED  
 BY PARENT OR GUARDIAN

CALL 257-2657 OR 257-2873 NOW! FOR MORE INFORMATION & RESERVATIONS. CIVILIAN WORKERS WELCOME! Marines, Army, Navy, Air Force, Coast Guard. Everyone's Welcome.



MasterCard & VISA Accepted for Concert Tickets, Dinner & Beverage Purchases.

## WINDWARD ENLISTED CLUB KMCAS

## 2nd Anniversary GRAND OPENING

# 2 for 1

THIS MEMBERSHIP INCLUDES FREE (U.V.A.) SUNTAN SOLARIUM & FREE BABYSITTING.

Two years or two people for the price of one at the ultimate figure fitness and aerobic spa for women in Windward City Shopping Center.

\*Same as in April 1984! If you missed it then, now's your opportunity!



Mademoiselle Spa takes pride in offering the best to the ladies of Hawaii with personalized programs and the finest, the most luxurious exercise equipment and facilities available. So, ladies, if you wish to reduce pounds and inches, firm, tone, and join in the fun of dance and exercise aerobics while gaining fitness along the way, then Mademoiselle is the answer for you.

Mademoiselle features... personalized supervision • aerobics • the most modern exercise equipment • steam • whirlpool • and many other facilities! Call today for your appointment. **235-3511**

HAWAII'S ONLY LUXURY SPA EXCLUSIVELY FOR WOMEN!

HOURS: 8 a.m. - 9 p.m. Mon.-Fri., 9 a.m. - 6 p.m. Sat., 12 a.m. - 5 a.m. Sun.  
 Babysitting • Ample Free Parking  
 Windward City Shopping Center

**Mademoiselle Spa Lady**

Due to popular demand, 2nd Anniversary offer extended



**Navigation / from A-1**

One-channel user sets will be used on land vehicles such as tanks and for personal use. Baker said scientists at the Defense Advanced Research Projects Agency are working on the technology that eventually could reduce the size of the one-channel model to that of a cigarette pack.

Although the Global Positioning System is being developed for military use, it has the potential to provide navigation, position and time information to civilian users as well.

The system offers promise in land surveying and oil exploration, as well as for commercial ships, yachts... even ordinary motorists.

"By the year 2000, possibly sooner, we could be seeing many thousands of people enjoying the benefits of Global Positioning System," according to one defense contractor involved with the system.

"A receiver might cost about the same as a car's air conditioner, provide exact position information at the push of a button, and use less power than a flashlight."

By Donna Bolinger  
American Forces  
Information Service

**A Weight Control Group** meets every Tuesday from 11:45 a.m. to 12:45 p.m., at the Family Services Center, here. Brown bag lunches are welcome. A private weighing is included.

**A Red Cross Babysitting Course** for 11-15-year-olds will be held June 11 and 12 from 9 a.m. to 3 p.m. Class is limited to 16. Bring your own lunch. For reservations, call 257-2128/2129.

**PIZZA SPECIAL**

1 Large cheese pizza  
Pitcher of soft drink  
15 tokens



**\$5.95**

Additional toppings may be added at extra cost.

Coupon must be redeemed at the time of purchase and may not be used with any other offer, coupon, or birthday package special. Only one (1) coupon per family. Offer good May 16-31, 1986.



98-1258 Kaahumanu 488-8487

**Birthday Party Special**

REG. \$4.95 per person, NOW \$3.95 per person!!! Offer good Mon. thru Thurs. only. No coupon necessary. Call for more details. 488-8487.

**KUHIO**  
2095 Kuhio  
941-4422

**STARTS FRIDAY**

Michael Burgess wrote a book about the American Revolution. Now, Hollywood's come to his town to make a movie of it - Plunging him into a summer of madness.



A UNIVERSAL PICTURE

PG PARENTAL GUIDANCE SUGGESTED

**Ronald T. Nelson**  
D.D.S.

**FAMILY DENTISTRY**

970 N. Kalaheo Ave.  
Suite C #309  
**PALI PALMS PLAZA**  
KAILUA

HRS:  
Days & Evenings  
By Appointment  
254-5503

**WE HAVE THE LOWEST FARE ON THE MOST FLIGHTS.**

Going to the Neighbor Islands this weekend? We offer the most flights at \$36.95. You can get the lowest fare and a wide choice of departure times as well. You'll even save enough roundtrip to cover a rental car, plus gas.



**MAUI**

6:10am\* 1:45pm  
6:25am\* 2:10pm\*  
7:50am 2:38pm\*  
8:10am\* 3:25pm  
9:15am 3:50pm\*  
9:40am\* 4:20pm\*  
10:10am\* 4:35pm  
10:45am 4:48pm\*  
11:15am\* 5:30pm\*  
11:45am\* 6:08pm\*  
12:10pm 6:35pm  
12:45pm 8:00pm\*  
1:23pm\*



**KAUAI**

6:20am\* 7:30am\*  
7:45am 9:20am  
9:50am\* 10:45am  
11:30am\* 12:45pm\*  
1:45pm\* 2:38pm  
3:30pm\* 4:20pm\*  
4:55pm 5:55pm\*  
6:35pm\* 7:25pm\*



**BIG ISLAND**

**KONA:**  
6:25am\* 6:55am\*  
9:35am\* 1:00pm\*  
3:35pm\* 4:48pm\*  
6:08pm\* HILLO  
6:30am\* 9:30am\*  
1:25pm\* 4:48pm\*  
6:10pm\*

\*\$36.95 flights shown in bold face type. Flight schedule shows departure times from Honolulu.



**MID PACIFIC AIR**

The Lowest Fare on the Most Flights.

Oahu 836-3313, Maui 242-4906,  
Kauai 245-7775 or 245-5681, Kona 329-0944 or Hilo 961-6626. Or call your travel agent.

**We Keep You Revvin'**



OFFERS GOOD NOW THROUGH 5/18/86

**12-PACK BEER**

BUDWEISER & BUD LIGHT  
12/12 OZ CANS



ALL OTHER 12-PACKS

**FRESH HOT DOGS**



JUMBO OR SAUSAGE

FREE CHILI AND CHEESE

EACH

**2-LITER SODA**



- PEPSI
- DIET PEPSI
- DIET PEPSI FREE
- MOUNTAIN DEW
- 7-UP
- DIET 7-UP
- PEPSI FREE

EACH

**ANDRE CHAMPAGNE**



- EXTRA DRY
- PINK
- COLD DUCK

YOUR CHOICE

**CARTON CIGARETTES**

WARNING: THE SURGEON GENERAL HAS DETERMINED THAT SMOKING IS DANGEROUS TO YOUR HEALTH.



EXCEPT WAIKIKI

**CASE COKE**

- COKE
- CLASSIC COKE
- DIET COKE
- C.F. COKE
- C.F. DIET COKE
- CHERRY COKE
- DIET SPRITE
- C.F. TAB
- SPRITE

MIX 'N' MATCH ANY COMBINATION YOU DESIRE



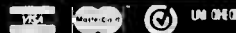
24-12 OZ CANS

Keeps You Revvin' Like

available at all stores on Oahu.



NOW ACCEPTING



OPEN 24 HOURS EVERYDAY

ALL ITEMS PLUS TAX, WHILE SUPPLY LASTS ON OAHU ONLY!

THE SOUTHLAND CORPORATION

# At a glance

## Garagefest '86

Marines from HMM-262 will be holding "Garagefest '86" on Saturday, from 8 a.m. to 2 p.m., at Coleman Field, across from the 7-Day Store. All proceeds collected from the sale will be donated to the Navy Relief Society's fund drive. A bake sale, hot dog roast and refreshments will also be available.

## Credit union anniversary

The annual meeting of the Windward Community Federal Credit Union will be held tomorrow at the Enlisted Club, here, starting at 4 p.m. In conjunction with the meeting, the credit union will be celebrating its 33rd year of service with an opening ceremony, pupus, beverages and door prizes. All members are encouraged to attend. During the business meeting, officers for the coming year will be elected, and last year's financial report will be given along with a review of the goals for the coming year. For information on the annual meeting, call 254-3566.

## Band Concert

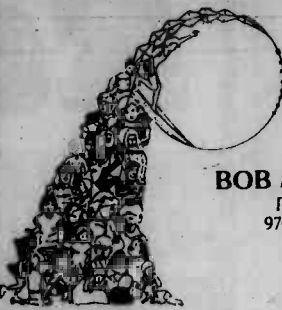
The FMFPac Band will perform in a combined concert with the Royal Hawaiian Band on Sunday, at 2 p.m., at the Kapiolani Bandstand in Waikiki. The Armed Forces Week concert will feature "American Overture for Band," "Star Spangled Spectacular," "Victory at Sea," "Duty, Honor, Country," "American Salute," "Buglers Holiday," and "God Bless America." The concert is free and open to the public. A mini-parade honoring military personnel in Hawaii will be held tomorrow beginning at 11:45 a.m. The

parade will start from Hotel Street and will feature a high school band, the U.S. Army Band, the Gurka Drum and Bag Pipe unit from Hong Kong and the KDEO Dancers.

## Camp Smith Live Fire

Live firing will be conducted at the Camp H.M. Smith Training Facility, at Ewa Beach, on Sunday, from 7 a.m. to 5 p.m. All safety limits and restricted areas will be enforced. For more information, call 471-3548 or 471-8011, Monday through Friday, 7 a.m. to 5 p.m.

The New Arrivals Program for single and married personnel and their families includes an orientation briefing, a tour of the island and free lunch at the Hale Koa Hotel. Every second and fourth Friday, 9 a.m. to 4:30 p.m. For reservations, call 257-2128/2129.



HMSA  
MEDICAID  
MILITARY DEPENDENTS  
  
FREE  
PRENATAL INTERVIEWS

BOB ANDERSON, M.D.  
PALI PALMS PLAZA  
970 N. KALAHEO AVE.  
SUITE C-103  
KAILUA  
254-6474

PEDIATRIC CARE Newborns to Adolescents

# MAHALO HAWAII

For Helping Us Get Started

NOW AVAILABLE:

'86 1/2 NISSAN CAMPER SHELLS



- STOCKLAND Camper shells (Domestic & Import)
- HARBOR Utility Bodies
- Sliding Rear Windows
- Tool Boxes
- Flatbeds
- Liftgates
- Pipe Racks
- Roll Bars
- Grill Guards
- Tube Bumpers
- & MUCH MORE

TRUCK EQUIPMENT HAWAII  
944 AHUA ST. (behind Carpet Corner) 836-0525

# NOTICE TO MILITARY CUSTOMERS

**ANNIVERSARY SALE OFFER!**

**CERTIFICATE**  
**MARSH CO. ANNIVERSARY**  
**CUSTOMER**

MARSH CO. ANNIVERSARY CUSTOMER  
Additional 4% Off For Your Lifetime!

PRESENTED TO

NAME \_\_\_\_\_

ADDRESS \_\_\_\_\_

**FREE KEY CHAIN . . .**  
ENTITLES YOU TO AN ADDITIONAL  
4% OFF FOR LIFE!! (MIN. \$99 PURCHASE)

# WE'LL TRADE YOU FOR IT!

We realize that many of you in the Armed Forces may not be able to take much advantage of our "4% Savings For Life" key chain. So we'd like to trade for it with this special offer:

## 0% INTEREST FOR ONE FULL YEAR!

(FOR MEMBERS OF OUR ARMED FORCES ONLY, WITH THIS COUPON)  
BUY AS MUCH FURNITURE AS YOU WANT AND PAY NO INTEREST FOR ONE FULL YEAR. YES, THE LOW PRICE ON THE TAG IS THE LOW PRICE YOU PAY . . . WITH EASY PAYMENTS SPREAD OUT OVER A YEAR! OFFER ENDS SAT. 5/17

MARSH DILLINGHAM STORE 1808 DILLINGHAM BLVD. 847-5382  
MARSH WAIPAHU STORE 94-300 FARRINGTON HWY. 671-3995  
MARSH KANEHOE STORE NEXT TO OGM 247-2737

IN LIEU OF 4% OFF AND KEY CHAIN GIFT OFFER. ON APPROVED CREDIT. MIN. 20% DOWN

MIN. \$299 PURCHASE

**WATERBEDS**  
Renewed - Complete  
Guaranteed  
\$475<sup>00</sup>  
Aqua Wood  
486-3288

*Gucci Poochi's*  
*Galloping Groomer*

Pets groomed in the comfort & security of your home. Our tenderness is as professional as our tidiness. All breeds.

Services include:  
• Bathing  
• Clipping  
• Nail trimming  
• Dipping

Serving Windward Oahu & the Animal Quarantine.  
254-5518 Lauren Robinson

**SCUBA SUMMER'S HERE!**  
**SALE**  
At  
**PACIFIC QUEST DIVERS**  
up to **50% OFF**  
All Equipment  
**TANKS \$119<sup>95</sup>**  
Incl. FREE AMI For Life!  
**B.C.'s From \$169<sup>95</sup>**  
**REGULATORS**  
From **\$149<sup>95</sup>**  
**OPEN WATER CLASS**  
Only **\$89<sup>95</sup>**  
**AND MUCH MORE!**  
**3 Big Days Only!**  
**MAY 16, 17, 18**

LET'S GO DIVING!!!  
PACIFIC QUEST DIVERS  
247-1015  
40-216 Kalia Rd.  
Hawaii's Preferred Scuba Authority

# Armed Forces Day '86

The Navy and Air Force will host a joint Armed Forces Day 1986 observance at Pearl Harbor and Hickam AFB on Saturday, from 9 a.m. to 4 p.m.

The observance at Pearl Harbor will be a joint program with the Marine Corps, Navy and Coast Guard. The observance at Hickam will include participation by the Air Force, Navy, Army, Marine Corps and Coast Guard.

Highlights of the Pearl Harbor observance will include three ships for general visiting; parachute jumping and scuba/deep sea diving demonstrations; a VC-1H3 helicopter on display; rappelling and SPIE rig evacuation by Marines;

jazz and rock music concerts by the Pacific Fleet Band; and a martial/popular musical concert by the FMFPac Band.

The highlights of Hickam's observance will be aircraft flyovers; parachute jumpers; Marine rappelling/SPIE rigging demonstration; security police dog demonstrations; security police dog demonstrations; JROTC drill team competition; and a variety of musical entertainment.

Visitors to the Pearl Harbor Armed Forces Day observance should enter and exit through Halawa Gate, which will be open at 7:30 a.m., and close at 5:30 p.m. Security officers will direct all traffic to available

parking areas at the Naval Supply Center.

Hickam visitors should enter and exit through the main gate, which will be open at 9 a.m., and close at 4 p.m. Security Police will direct all traffic to available parking areas.

Two Navy buses will shuttle visitors between Pearl Harbor, the USS Arizona Memorial Visitor Center and Hickam.

The schedule of events for Pearl Harbor is:

7:30 a.m. — Halawa Gate opens.

9 a.m. — Armed Forces Day program begins at Naval Supply Center Kilo piers.

9 a.m. — First shuttle bus begins operating to and from USS Arizona Memorial

Visitor Center and Kilo piers.

9:30-10 a.m. — Scuba/deep sea diving demonstration by Navy divers.

10-10:30 a.m. — FMFPac Band performance on stage behind bldg. 475.

10:30-11 a.m. — Navy parachute jump. Explosive Ordnance Disposal Group.

11-11:30 a.m. — Marine rappelling demonstration, followed by SPIE Rig demonstration around harbor area between Kilo piers and Arizona Memorial.

11:30 a.m.-noon — Scuba/deep sea diving demonstration.

Noon-12:15 p.m. — Award presentation to command with best overall exhibit.

12:15-1 p.m. — PACFLT Tsunami Band Rock Music

Concert, on stage in back of bldg. 475.

1-1:30 p.m. — Scuba/deep sea diving demonstration.

1:45-2:30 p.m. — PACFLT Show Band Jazz Concert, on stage in back of Bldg. 475.

2:30-3 p.m. — Scuba/deep sea diving demonstration.

3-3:30 p.m. — Navy parachute jump.

3:30-4 p.m. — Marine rappelling and SPIE Rig demonstration.

4 p.m. — Armed Forces Day concludes.

5:30 p.m. — Halawa Gate closes.

Visitors are reminded that security at both bases will be strictly observed and by entering a military installation, they become subject to vehicles and parcels inspection.

## Armed Forces Day messages

### From the President

For most Americans Armed Forces Day is a once-year event, but to you who serve in the Army, Navy, Air Force, Marine Corps, and Coast Guard, every day is Armed Forces Day.

Whether you are on a lonely hilltop outpost in Korea, serving in that urban island of freedom known as West Berlin, patrolling the high seas, unloading cargo planes at Diego Garcia, turning eager youngsters into proud Marines, or rescuing small water craft off our nation's coasts, you all serve America and serve it well. We are proud of you — proud and grateful.

As Commander-in-Chief, I assure you I will not waver in my commitment to providing America with the strongest, best trained, best equipped, and most modern Armed Forces possible. Let no one have any doubts on that score. I salute all of you today and every day for your very special contribution to Keeping America Free.

*Ronald Reagan*  
Ronald Reagan



### From the Secretary of Defense

On Armed Forces Day each year, all of us take a close and personal look at our men and women in uniform and the equipment they operate in serving our country. I know that most citizens come away impressed with the quality of the Servicemembers they meet and the capabilities of the combat systems that American industry provides. I know too, that they are deeply grateful, as I always am, for your dedication and your commitment to the eternal vigilance we must maintain to keep our freedom.

On this Armed Forces Day of 1986, I hope you can sense, as I do that all Americans have a renewed pride and confidence in their Armed Forces and in the achievements of our men and women in uniform. This is a tremendous accomplishment, which you yourselves achieved through sacrifice and steadfastness.

Our Armed Forces today are strong, capable, and ready to perform any mission in the pursuit of peace and the defense of our nation. Not only on this one day of the year, but on all other days as well, you have the profound gratitude of our citizens and of all freedom-loving peoples.

*Caspar W. Weinberger*  
Caspar W. Weinberger  
Secretary of Defense



### From the Commandant of the Marine Corps

On this Armed Forces Day, a grateful America pays tribute to your professionalism.

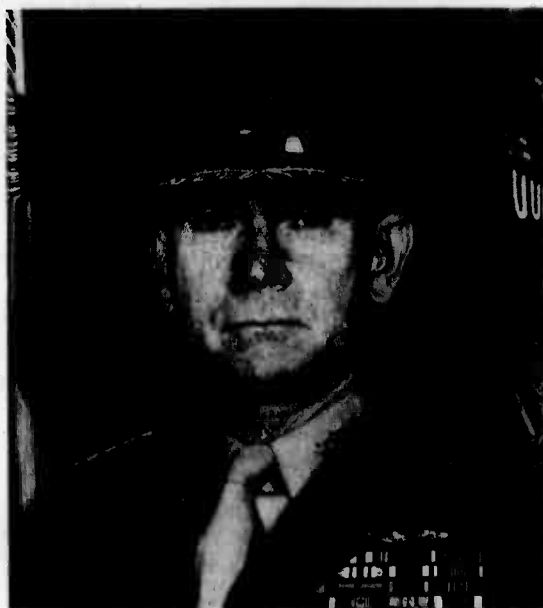
As Marines, you can stand tall knowing that you remain a vital part of our Nation's Force-in-Readiness. Through your selfless devotion, our Corps continues to uphold the special trust and confidence the American people have placed in us. Your superb training and total dedication to duty have moved each of you to the forefront of our national defense.

I commend all Marines and sailors whose contributions to safeguarding our freedom are reflected in the highest degree of combat readiness the Corps has ever known. Along with the patriotic men and women in our sister services, you have formed a bond of strength that will enable our country to meet the challenges of today and tomorrow.

As you perform your duties, I ask that each of you rededicate yourselves to a motto which has served as an inspiration for over 210 years... Semper Fidelis... always faithful.

Good luck and best wishes to each of you, and to your families.

*P.X. Kelley*  
P.X. KELLEY  
General, U.S. Marine Corps



**A Smart Spouse Workshop** will be held May 22, from 9 to 11 a.m. Items to be discussed include legal assistance services, divorce rights in Hawaii, consumer law, landlord-tenant problems, wills and powers of attorney.

**Ombudsman Training** will be held May 28, 7 to 9 p.m., at the Family Service Center, here. New Ombudsman handbooks are available at the FSC. Call 257-2128/2129 for information.



**DR. GUY M. NISHIZAWA**  
OPTOMETRIST

ANNOUNCING HIS NEW OFFICE AT  
**45 Aulike Street, Kallua**  
(Corner of Aulike and Uluku Street)  
phone: 262-2330

- Eye Examinations
- Contact Lenses
- Fashion Eyewear

**FREE T-SHIRT!!!**  
Business - Schools - Churches - Clubs

If you're in the market for printed T-shirts, check us out first. We offer:

- A FREE printed sample before ordering
- NO artwork charge
- NO screen charge
- FREE pick-up & delivery

OVER GOOD FOR LIMITED TIME ONLY

**PHOTO-LETTERING SERVICE AVAILABLE**

**CHRISTIAN T S**  
HAWAII

45-635 #B-11 Luluku Rd. - Kaneohe Ph. 235-3910

**\$34 for A Room and Car For Two**

KONA HUKILAU from \$34	KAUAI SANDS from \$44
KONA SEASIDE \$44	MAUI HUKILAU \$49
HILO HUKILAU \$36	MAUI SEASIDE \$55

Includes standard room on or by ocean, a 1986 Budget auto compact, free mileage. Most rooms have color TV, refrigerator, ceiling fan, A/C, phone, pool, dining room, free ice, free parking. Hawaii's largest room and car operator.

**ROOMS ONLY from: \$28 single or double.**

See your travel agent or call: Sand & Seaside Hukilau Hotels **922-1228**

# ARMED FORCES DAY

Special Saturday Hours: 10am to 8pm

**\$1500 INSTANT CREDIT\***  
**20% TO 50% OFF STOREWIDE**

**NO INTEREST AND NO DOWN PAYMENT FOR 90 DAYS ON APPROVED CREDIT**

**A. SAVE \$90.95 CAMPAIGNER VIDEOCENTER**  
Our sturdy, easy to care for center has a place for your tv, VCR, tapes, extra cables.  
Reg. \$249.95 **\$159**

**SAVE \$60.95 WAGON WHEEL BUNKBED FRAME**  
Just like the Old West—the kids will love it! Mattress and boards sold separately.  
Reg. \$159.95 **\$99**  
Bunkie mattress and board \$89 ea.  
Reg. \$119.95 ea

**SAVE \$420 WEATHERVANE 5-PC SET**  
Our country style dining set has a pedestal table 40" x 58" that extends to 76". 4 arm, 599 less chairs. Reg. \$1019 **\$599**  
24 monthly payments plus down payment **\$269<sup>2</sup> mo.**

**D. SAVE \$20.95 WHITE LACQUER BOOKCASE**  
Each unit 32" x 11" x 71". Double door accessory sold separately. Easy to assemble.  
Reg. \$109.95 ea **\$79 ea.**

**E. SAVE \$74 SWIVEL BARSTOOL**  
Ride 'em high, swing it low. This colonial barstool adjusts from 24" to 29".  
Reg. \$149 **\$75**

**F. SAVE \$20.95 STENO CHAIR**  
Choose from red, blue, beige.  
Reg. \$109.95 **\$89**

**E SAVE \$72.95 SPINDLE BUNKBED FRAME**  
A great space-saver. Mattress and boards sold separately.  
Reg. \$149.95 **\$77**

**G. SAVE \$46.95 FOLDING TABLE AND CHAIRS**  
Set it up in front of the tv for the Big Game. 4 chairs. Natural finish. Reg. \$225.95 **\$179**  
5-PC SET

**B. SAVE \$36.95 WHITE LACQUER DESK**  
Two drawers for your supplies and handy hooks for books. 47" x 23" x 28". Easy to assemble.  
Reg. \$175.95 **\$139**

**SIMMONS BEDDING 20% TO 40% OFF**  
Free 6 pc. Corningware set with every purchase of our Beautyrest Classic bed set.

**SAVE \$410 CUMBERLAND 5-PC SET**  
Big, impressive country manor style! 42" x 68" trestle table extends to 92". 4 armless chairs with eye-catching ballbacks. Reg. \$1409 **\$999**  
24 monthly payments plus down payment **\$489 mo.**

**G. SAVE \$140.95 COMPUTER CENTER**  
A real task table made for serious business. Features bookcase and lots of space to help you get organized.  
Reg. \$439.95 **\$299**  
24 monthly payments plus down payment **\$1343 mo.**

**C. SAVE \$740.00 WEATHERVANE SET**  
Create the perfect setting for your entertaining guests. Our sofa and loveseat in warm spice oak finish, sturdy carved wood.  
2-PC SET Reg. \$1639.00 **\$799**  
24 monthly payments plus down payment **\$3590**

**SAVE \$300.90 NEWPORT SET**  
Our sofa and loveseat in natural colors blend so easily with anything.  
Reg. \$1499.90 **\$799**  
2-PC SET **\$3590 mo.**

**SAVE \$76.95 SURPRISE 3-SEATER**  
Little space? Tight budget? Want style? This sofa is just right. 75" x 30" x 32". In black or putty.  
Reg. \$1129.95 **\$299**  
24 monthly payments plus down payment **\$1343 mo.**

**H. SAVE \$80.95 COMPUTER TABLE**  
Genuine task table on casters rolls easily to wherever you need it.  
Reg. \$229.95 **\$149**

**HUNDREDS OF ITEMS ON SALE**  
**BJ PEARLRIDGE ONLY!**  
98-107 Kam Hwy. • PH: 487-7211  
**SPECIAL STORE HOURS:**  
10AM TO 8PM MAY 17

**PEARLRIDGE SHOPPING CENTER**  
98-107 KAM HWY. KANELOE, HI 96705

**BJ FURNITURE**  
\*On approved credit.  
\*Based on a 24-month contract.  
18% APR, 10% down

Some items are not available for immediate delivery. All subject to prior sale.

# Mystery team takes Club Spring Tournament



Dawn Reaves, a member of the Silver Bullets team from the Nimitz Club, runs for third base.

## Tourney promotes sportsmanship

Story and photos by Sgt. Leah Gonzalez

The K-Bay Athletic Club Spring Tournament was held here, May 10 and 11, with the mystery team from the Nimitz club taking first place.

The eight K-Bay Club and two Nimitz women's softball teams played double elimination, seven-inning games. The tournament, held on Pollock field, started at 8 a.m., and ended after 7 p.m., both days.

"We've had these games for the past few years to promote goodwill among the teams," said Judy Perkins, the K-Bay Club Commissioner. "It also helps all the girls to stay in shape and build team pride."

Of the awards given, individual trophies went to the top three teams, along with team trophies. There were also three individual awards given to the Most Valuable Infielder, Outfielder and Player of the tournament. The stats are:  
1st Place Mystery (Nimitz Club)



- 2nd Place Wildcats
  - 3rd Place Silver Bullets (Nimitz Club)
  - 4th Place Esprit-Deuce
  - 5th Place Wham
  - 6th Place Wikiwiki Wahines
  - 7th Place Bad Co
  - 8th Place Redball Express
  - 9th Place Rebels
  - 10th Place Dreamers
- The Most Valuable Outfielder award was given to Dee Dee Pennison from the Mystery team; the Most Valuable Infielder award went to Phyllis Morton from the Esprit-Deuce team; and Debbie Braxgon, of the Wildcats, was named the Most Valuable Player.



Betsy Bichenbach, of the Wikiwiki Wahines, starts her swing during a game against the Wildcats.

## 1986 STAFF NCO INVITATIONAL

The Staff NCO Golf Invitational will be held at the Kaneohe Klipper Golf Course, here, May 24-25. The opening ceremony will be held at 8 a.m., May 24, and play will begin with shotgun starts at 8:15 a.m. and 1:15 p.m. Starting times for May 25 and 26 will be 7 a.m., and noon, at No. 1 and 10 tees. The 54-hole tournament is open to all active duty Marines island-wide, retired military and members of the Kaneohe Klipper Golf Course.

The \$40 entry fee includes green fees, cart, and admission to the awards banquet to be held at 6 p.m., May 26. Entry deadline is May 19. For information, call SgtMaj. Pugh at 257-2534 during working hours.

All active duty Marines, ENLISTED and OFFICER, are eligible.

## Sports Shorts

### Runners wanted

The Runner's Life Single 10-mile Classic will be held June 21, at Schofield Barracks.

Units and individual runners, military or civilian, are encouraged to enter this race. The course is flat, TAC-certified, beginning and ending at Stoneman Field.

In addition to elite and age group prizes, special awards will go to the first five military men and women finishers: the fastest unit running in formation; and the largest unit running in formation.

Awards to the winning formations will include a large trophy for the unit and individual trophies for each runner.

Entry fee is \$8 until June 12, then it will be \$12 until June 20. It includes post-race refreshments, finish time

mailed to your home, and a chance to win random prizes. For \$6 more you can get a long-sleeve T-shirt. Applications are available at Special Services offices and at most athletic stores.

For more information, call 235-0577.

### Swimming lessons

Swimming lessons will be held Tuesday-June 3. Classes are available for infants, children and adults. Cost is \$25 for 10 lessons. Call 254-2963 for schedule.

### Tennis

An Open Tennis Tournament will be held June 7-8 at the lower courts. Matches will start at 9 a.m., on June 7. All-Marine hopefuls are encouraged to participate. Register with the Athletics Office as soon as possible.

### Youth Soccer

Youth Summer Soccer registration for boys and girls 6-16 years old is being conducted on a first-come, first-served basis at Dependent Rec. bldg. 1391, from 1-4 p.m., Monday through Friday. Military ID card or a birth certificate is required.

For more information, call 254-2963.

### Volunteer Coaches

Individual interested in coaching a youth soccer team may contact Dependent Rec at 245-2963 as soon as possible. Training will be provided to coaches of all levels.

### Bowling

An organizational meeting for the Summer Bowling Program will be held at the Station Theater, May 28, at noon. Units are encouraged to enter more teams.

# Island Happenings



## ALA volunteers

The American Lung Association of Hawaii needs volunteers to count and process direct mail donations. Additional help is needed for folding, stapling, and collating health education materials.

Contact Hazel or Joanne at 537-5996 for more information or to volunteer.

## Frisbee Festival

Hundreds of brightly colored discs and footbags will be in the air at the Honolulu Hacky Sack and Frisbee Festival May 24 at Kapiolani Park from noon until 5 p.m. Admission is free.

The festival is a fun, non-competitive, family-oriented event. There will be demonstrations by Frisbee champions and Hacky Sack wizards. In addition to exhibitions, instructors will be available to give free beginner, intermediate and advanced workshops.

## What's cooking

### Today

Lunch: Grilled cheese sandwich, baked ham  
Dinner: Beef stew, Newport fried chicken

### Friday

Breakfast: Grilled ham slices, corned beef hash, nutmeg French toast, waffles  
Lunch: Baked turkey & noodles, Southern-style perch filets  
Dinner: Deep fried fish sticks, French fried shrimp, ravioli, baked macaroni and cheese

### Saturday

Brunch: Creamed beef, pancakes, waffles  
Dinner: Beef sauerbraten, stuffed cabbage roll

### Sunday

Brunch: Hashed brown potatoes, grilled minute steaks  
Dinner: Grilled steak-to-order, Southern-fried chicken

### Monday

Breakfast: Creamed beef, waffles  
Lunch: Roast veal, BBQ sliced pork, mashed potatoes  
Dinner: Baked honey glaze rock Cornish hen, hamburger parmesan, rice Pilaf

### Tuesday

Breakfast: Oven-fried bacon, cinnamon French toast  
Lunch: Roast fresh pork ham tamale pie  
Dinner: Swiss steak with brown gravy, baked huliuli steak

### Wednesday

Breakfast: Baked sausage links, pancakes  
Lunch: Spaghetti, ravioli, pepperoni pizza  
Dinner: Roast turkey, BBQ beef cubes

Participants will have the opportunity to learn the basics of Hacky Sack and Frisbee play, as well as pick up tips on how to try some tricky moves of advanced play.

One of the highlights of the day is the "Big Throw" — an attempt to break the Guinness record for the most number of discs in the air at the same time. The current record is 449.

For more information, call Brad Evans at 449-5078.

Box Office, by mail order and through reservations by calling 455-0385.

## Rainbow Festival

The Rainbow Arts Festival, featuring 50 performances by young people, will be held Sunday on The Bishop Museum Grounds, from 9 a.m. to 6 p.m.

The event is sponsored by the Hawaii Alliance for Arts in Education. Admission is \$6 for adults and \$3 for children.

For more information, call Mark Jeffers at 944-3799.

## 'Mack and Mabel'

Singers, dancers, actors and musicians will combine their talents for Leeward Community College's production of "Mack and Mabel," the madcap musical love story of Mack Sennett, creator of the Keystone Kops, on Friday and Saturday and May 23 and 24 at 8 p.m., and May 25 at 2 p.m. at the LCC Theatre.

Tickets are \$3 for adults, and \$2 for students, senior citizens and military. They can be purchased at the LCC

addition, top musicians from Waikiki will provide entertainment.

The Youth Festival is open to all military, active duty and retired, and their families. Proceeds from the festival are used to support the youth programs at both Hickam and Wheeler Air Force Bases.

## Stop Smoking Program

Castle Medical Center's new "Breathe Free" stop smoking program will be held Sunday through Thursday and May 29 from 7 to 8:30 p.m. at Castle Health Education Center.

The program, based on the "Five-Day Plan to Stop Smoking" the hospital previously used, includes an introductory evening devoted to psychological preparation for the five days of the "cold turkey" approach to stop smoking.

A total of seven sessions are spent in the program.

Besides the first introductory session, which is free, there is a follow-up a week after the last session. Fees are \$35 per person, \$50 per couple.

The program emphasizes positive lifestyle changes while addressing physiological addiction, neuromuscular habit, psychological patterns, emotional depen-

deny and spiritual malaise. It consists of lectures, films, group interaction and discussion. Each participant receives a lung function test, as well as the results of two computerized smoker profiles.

For additional information and to preregister, call 263-5286 or 235-8737.



OM QUALITY SERVICE PARTS

GENERAL MOTORS CORPORATION

**To serve you better, Schuman Carriage Company Parts Department has a commitment to supply you with the largest, most complete inventory of genuine General Motors replacement parts and accessories. We always welcome you to stop by today or call any of our experienced and reliable salespeople who are dedicated to understanding your automotive parts needs.**

ESTABLISHED 1993

*Schuman Carriage Company*

LIMITED



CALL: 524-8571

## Coming Soon



Dr. Glenn C. Riggs

*Be a pioneer — attend the first service of the new*

### WINDWARD BAPTIST TEMPLE

Sunday - May 18 at 9:30 A.M.

- \* Bible Centered Sunday School
- \* Dynamic Evangelistic Preaching
- \* Warm Friendly People
- \* Nursery Provided Each Service

**Schedule of Services**

Bible Study 9:35 a.m.

A.M. Worship 10:35 a.m.

P.M. Worship 6:05 p.m.

Wed. Evenings 7:30 p.m.

For more information call 247-1896

**Independent Fundamental Evangelistic WINDWARD BAPTIST TEMPLE**

Temporarily meeting at Kailua High School

Dr. Glenn C. Riggs, Pastor 247-1896

## SATURDAY MAY 31

### ALOHA STADIUM

*"Motorsports Event of the Year."*

-Hawaiian Cruisers Car Magazine  
**"Supercross is a Thriller!"**  
-Honolulu Advertiser

## Alpha SUPERCROSS

**PUNWAY & NJ EVENTS PRESENT**

THE 3RD ANNUAL

**98 Rock Military Challenge Run**


Cutler Team 4x4 Truck Exhibition

HIC BMX Freestyle Show

Photo Courtesy of Daily 88-Torques Publications

**SUPER FIREWORKS SHOW**

from INSIDE the Stadium



ALPHA

**SUPER FIREWORKS SHOW**

from INSIDE the Stadium

**New Products Expo**

High School Race

Practice Sessions

Mini-Bikes & ATVs

Rain Date: June 1  
Rain or Shine

**SUPER FIREWORKS SHOW**

from INSIDE the Stadium

"Besides being exciting, Supercross is a fair deal for the dollar."  
-Honolulu Star Bulletin

**TICKETS ON SALE** Monday May 12 at All 7 Eleven Stores All Stars Store Family Food Stores Local Motorcycle Dealers The Stadium Box Office Charge by Phone 547-9888


**ALL SEATS GENERAL ADMISSION \$15.00 ADVANCE \$15.00 DAY OF EVENT \$18.00** KIDS 7-12, HALF PRICE Under 7 FREE with regular seat holder

**TRACK & PIT PASSER** On Sale at All Ticket Outlets

**LIMITED EDITION** "Supercross" T-shirt \$15.00

"Besides being exciting, Supercross is a fair deal for the dollar."  
-Honolulu Star Bulletin

The Alpha Supercross - "The Original Stadium Racing Event"



**WATERBEDS**

Double Tier - Bookcase Complete

\$225.00 w/terms

Pacific Waterbeds 621-9068

**ADOPTIONS**

**DIVORCE**

**DRUNK DRIVING**

Reasonable rates

Marylyn K. Hata

Attorney at Law

Ph. 521-4781

## "DRY EYE"

Treat with WET

### Lavoptik

EYE WASH

AT PAY 'N SAVE

• WHOLESALE TO THE PUBLIC • WHOLESALE TO THE PUBLIC •

## Wholesale Electronics

Why Pay Retail When You Can Buy Wholesale?!

### Walkman Sale

FROM \$11.99 to \$49.99

**Buy One At Our Reg. Low Price Get 2nd One Free!**

(Of Equal Or Less Value)



**American Audio #PR-6402 AM/FM/MPX Radio**

- Auto Stop Stereo Cassette
- 12 Watts Power Output



**ONLY \$39.99**

**Emerson Square Screen Color TV 20" Advanced Hi-Tech**

Only 4 Left

• Remote control M20R

**NOW \$399.99**

**CAR STEREO #1 PACKAGE**



• CR 20 V AM/FM Cassette Car Stereo  
• EQ77 Band Graphic Equalizer  
• CR545 1/2" 3 Way Stereo Speakers  
• SE 14124 2 Way 30 Watts Speakers

**ALL FOR ONLY \$69.99**

WITH THIS COUPON

**CAR STEREO #2 PACKAGE**



• CA 500 AM/FM Cassette w/Auto Digital Display Auto Scan Volume & Balance Controls  
• SF 6933 6x9 3 Way Speakers  
40 WATTS MAX

**ALL FOR ONLY \$89.99**

WITH THIS COUPON

**CAR STEREO #3 PACKAGE**



**Installation Now Available!**

**CAR STEREO #4 PACKAGE**



**139**

WITH THIS COUPON

**43-6 ONEAWA ST., KAILUA**

**263-6600**

Hours: Mon-Fri. 9-7 pm Sat. 10 am-4 pm Sun. 10-3 pm

Limited Supply — Rainchecks Given

ITEMS NOT EXACTLY AS SHOWN



• WHOLESALE TO THE PUBLIC • WHOLESALE TO THE PUBLIC •

## Special Services

### Drop-In Center

NaKeiki Drop-In Center will hold an Open House on Wednesday from 6:30 to 8 p.m. Everyone is invited.

For more information, call 254-3249.

### Adult Hula

Learn the islands culture and grace through its own unique dance. Evening classes start next week.

Call Dependent Rec. at 254-2963 for more information.

### Station Library

The Station Library has "Lie Down with Lions," by Ken Follett. A young Englishwoman, a French physician, and a roving American each have their reasons for arriving in

Afghanistan where the mountain-bred natives wage a guerilla war against the invading Russians. This exotic story of espionage and intrigue revolves around these three people, a Russian commander and a legendary leader of the Afghan guerillas.

For more information, call 257-3583.

### Health Appraisal Workshop

Learn about health risk factors, stress/relaxation exercises, healthful cooking on Tuesday from 11:30 a.m. to 1 p.m. in the Station Theater. It's open to everyone and it's free.

Call Dependent Rec at 254-2963 to make reservations.

## Movie schedule

### Today and Tomorrow

**Iron Eagle (PG-13)** Louis Gossett Jr. Action-adventure. Air Force Col. Ted Mast is shot down over an unidentified Middle Eastern country and is sentenced to death for violating their air space. His son, Doug, is determined to rescue his father at any cost.

### Saturday and Sunday

**Young Sherlock Holmes (PG-13)** Mystery-adventure. Everyone knows about the adventures of Sherlock Holmes, but do you know how his career began? Steven Spielberg unravels the legendary sleuth's greatest mystery.

### Monday

**Requiem for a Heavyweight (PG)** Anthony Quinn and Jackie Gleason. Boxing-drama.

### Tuesday and Wednesday

**Better Off Dead (PG)** Romantic-comedy. Lane Meyer is a 16-year-old who, after being dropped by a fickle blonde beauty, decides he's better off dead than dumped. To prove himself a better man than his rival, he vows to conquer a killer ski course or die trying.

## Ticket info

**Dorothy Hamill Ice Show - Waikiki Shell**, at 2:30 p.m. Saturday and Sunday. Tickets are \$17.20 for pool area; \$15.20 for terrace and \$10.20 for grass seating. For children under 16 and adults over 64, tickets are \$2 off.

**Liberty Ride - A bike ride from the NHC Arena**, at 8 a.m. Includes lunch, photo, T-shirt, closed TV show of Hwey Lewis, Hall and Oates and the Hooters. Tickets are \$21.70.

**Aloha Supercross - Aloha Stadium** on May 31 at 7:30 p.m. Tickets are \$13.20 for adults and \$6.35 for children 6-12.

**Amy Grant - Waikiki Shell** on June 14 at 7:30 p.m. tickets are \$15.70 for reserved seats, and \$13.20 for lawn seating.

**Polo Matches - Mokuleia - through August**. Tickets are \$1.

**Hawaii Islanders Baseball - At Aloha or Rainbow stadiums**, seasonal book of 20 tickets is \$25. Single tickets are \$1.25. Ask for a game schedule.

**Castle Park Special - Action Pass gift certificates** are \$10.95 for two people.

For more information, call Margaret at 254-3804 or stop by bldg. 219. Hours are from 9 a.m. to 3:30 p.m. Monday through Friday.

\$1500

COMPLETE - RECONDITIONED ANY SIZE - GUARANTEED Beds by Ed 696-5788

### TRAVELING TO THE ORIENT?

Let me help you save on \$100-\$200. Save on mainland and interisland travel too. For excellent service and free delivery call:

B.C.I. TRAVEL  
735-8414 Rick  
8:30 am-7:30 pm Mon-Fri  
1A 867

### ARRESTED FOR DRUNK DRIVING?

CALL NOAH D. FIDDLER

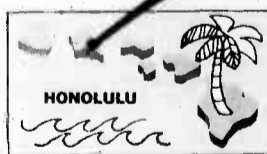
Attorney at Law  
Free Consultation

545-7400

820 Mililani St.  
HK Bldg. Ste. #612

261-3233

415 A. Uluolu St.  
Kaliua



ALSO TO: LONDON, FRANKFURT, MUNICH, STUTTGART, IRELAND, NASSAU, SAN JUAN, BERMUDA AND PARIS.

Fly Delta nonstop to Dallas/Ft. Worth, nonstop to Atlanta. Make fast connections for dozens of other cities.

Fly nonstop to Dallas/Ft. Worth any evening for arrival the next morning.

Our nonstop to Atlanta leaves every evening. You arrive in Atlanta the next morning.

Save with Delta's discount fares. Be sure to ask about our big discounts off regular Day Tourist Fares. Discount fare seats are limited and there are

special requirements; reserve early. We also have Military Fares that save you 25%. No restrictions - leave on any flight that has available space.

Check your on-base SATO (Scheduled Airline Ticket Office). See your professional Travel Agent. Or call Delta. Schedules are from Honolulu and subject to change without notice.



# TRY 2000 FLUSHES

## and your toilet bowl will be Hygiene Clean up to 4 months.

That means 2000 Flushes bleaches away stains, streaks and rings automatically, without brushing.

25¢
25¢

## SAVE 25¢

Please! Accept this coupon from the consumer on the purchase of specified product. We will reimburse you the face value of this coupon plus 8¢ handling. Coupon may not be assigned or transferred. Any other use constitutes fraud. Void where prohibited, taxed or restricted by law. Adequate proof of purchase must be submitted upon request. Consumer pays any sales tax. Cash value 1/100¢. MAIL TO: Bock Drug Company, P.O. Box 4256, Beaverton, Oregon 97075. Limit one coupon per purchase, good only in USA. Offer expires 7/31/86.

STORE COUPON 2045

# DELTA GETS YOU THERE. OVER 100 MAJOR CITIES, THE EASY WAY.









**NISSAN OF WAHIAWA**  
**621-0761**  
**EASY AS A, B, C, REBATES**

**A** **\$500<sup>00</sup>**  
 ON  
**SENTRA & PULSARS**  
 EXCLUDES - STANDARD MODEL SENTRA'S

**B** **\$600<sup>00</sup>**  
 2x2 AND 4x4 PICK-UPS  
**STANZA'S AND 200 SX'S**  
 EXCLUDES - STANDARD MODEL PICK-UPS

**C** **\$700<sup>00</sup>**  
**MAXIMA'S**  
 AND  
**300 ZX'S**

REBATES NOT COMBINABLE WITH  
 6.7% OR 7.7% FINANCING  
 OFFER GOOD TILL 5-22-86

**TAKE YOUR CHOICE!!**  
**6.7%**  
 ANNUAL PERCENTAGE RATE  
 BASED ON 36 MOS.

**OR**  
**7.7%**  
 ANNUAL PERCENTAGE RATE  
 BASED ON 48 MOS.

**ON ALL NEW NISSAN PICK-UPS**

**156 AUTO PARTS/SERVICES**

**"BATTERY FACTORY"**  
 • Reconditioned Battery \$19.95 & up  
 • Motorcycle Battery \$8.35 & up  
 • "Euro" 5 yr. Reg. \$74.95  
**49.95**  
 747 Kapiolani **533-3312**

TRANSMISSION Troubles? Call 684-3290 or 499-2583 Ask for Chief or Mac. Very reasonable Work Guaranteed!

VOLVO Owners - Four 1978 GT Alloy Wheels mounted with 185-70-14 Dunlops. Very good cond. \$325. Kevin 262-4659 eves.

10x15 DESERT Dealers on spoke rims. 3/5150. 2 rims \$30. Chevy 6-bolt. 623-9952

**OVER STOCKED TRUCK BED MATS**

Save wear & tear of your truck bed with a lycorad bed mat. Protects finish, withstands extreme temperatures & is unaffected by most chemicals & will not crack or break. Sizes 10 ft all models

**ALSO COMPLETE RUST PROOFING & AUTO DETAILING**

**Auto Mastics, Inc.**  
 Since 1971  
 524-4020  
 501 Cooke St., Honolulu 96813

**Four work. Four fun. Four excitement.**

FourTrax™ 4x4  
 FourTrax™ 250  
 FourTrax™ 200SX

Honda Four Trax™ four-wheelers deliver something for everyone. We've got versatile machines that are equally at home on the job or on the trail.

**HONDA**  
 FOLLOW THE LEADER

94-169 Farrington Hwy. **Sandy Brodie's** 871-2691  
 WAIPAHU CYCLES Mon.-Sat. 8 a.m. - 5 p.m.

**176 AUTOS FOR SALE**

Order from OREGON any NEW CAR or PICKUP contact —

**ROBERTS and REDFIELD**  
 Portland  
 Write for price lists and full information  
 ANY MAKE — ANY MODEL DELIVERED ANYWHERE Including HAWAII  
**ROBERTS and REDFIELD**  
 1313 W. Burnside  
 Portland, OR. 97209  
 (503) 295-5566

**AMC**  
 '71 HORNET. 4 dr. 6 cyl. auto. wgn radio. p/s. \$2800/offer. 735-7746 All day  
 '73 AMC Hornet wagon. 4 dr., auto., \$350. Phone 622-4679

**AUDI**  
 '85 TURBO 5000S. good cond. Call Arlene 525-8215 M-TH 8-4:30. Fri 8-6

**BMW**  
 '73 BMW 3.0S. 4 spd., AM/FM stereo p/b. p/s. p/w. new clutch. \$3500. Ph. 638-8209  
 '84 528E. excl. auto. air, sunroof. bckt seats. 12,810 mi. \$18,813/offer. 254-1688

**BUICK**  
 '76 REGAL. new tires/battery. good running cond. \$1500. Ph. 621-5364

**CADILLAC**  
 BANK Repol '82 Cimmaron 4 dr sedan. Call Cleo 525-8225 M-TH 8-4:30 Fri 8-6

**CLASSICS & ANTIQUES**  
 SPORTSCAR of yesteryear This '37 Conv'ble 2 passenger w/black sweeping fenders & running boards will take you back in time. Test drive & make offer. 624-9586

**CHEVROLET**  
 '63 ROADSTER Corvette. original cond. 4 speed. \$18,000/offer. Call 254-2611

**DODGE**  
 '75 DART Good transportation Auto. As is \$200/best offer 488-8595

**FIAT**  
 '78 FIAT Spider - New tires, paint, engine, top. Moving, must sell. \$2700/offer Call Henry. 623-3869  
 '78 FIAT Spider. new top excl. inside and out. \$2800. 833-0138 or 472-1035

**FORD**  
 '52 FORD. parts or restore. Good engine. New radiator \$425 734-8222 after 6 p.m.  
 '66 MUSTANG Conv. Classic show winner. 289 eng. 4 spd. \$5750/Of. 737-1123 eves.  
 '68 MUSTANG V8. 289. auto., p/s. excl. cond. \$1800. Ph 247-4062  
 '69 VISTA Cruiser 9-passenger wagon. new brakes. runs good. some rust. but great car! Ph. 261-6001 eves  
 '71 MUSTANG V8351C Hi performance. shift kit. Enki rms stereo, alarm power accessories. \$2700/offer 261-0138  
 '76 GRANADA-runs well. good tires. needs body work. \$450 261-6552 days

**5.9% GMAC FINANCING!**  
 Models may not be exactly as shown

**BEST BUY USED CARS & TRUCKS**

'78 Monte Carlo 2 dr., V6, AT, PS, AC. \$15199 **\$2,887**

'79 Ford Fairmont 2 dr., 8 cyl., AT, PS, RRX280 **\$1,287**

'82 Pontiac J2000 3 dr., AT, PS, AC. \$50952 **\$2,987**

'83 Ford Escort L 3 dr., 4 spd., cassette, CAS178 **\$2,887**

'83 Ford Futura 2 dr., AT, PS, AC. #24029 **\$2,687**

'81 Delta 88 Royal 2 dr., loaded. CBC882 **\$3,087**

'83 Ford EXP 3 dr., 5 speed. C5C037 **\$2,587**

'80 Concord DL 2 dr., 8 cyl., AT, PS. BFJ332 **\$1,987**

'83 Chevy Chevette 4 dr., AT, AC, radio, MNP355 **\$3,387**

'84 S-10 Blazer Tahoe, 4x4, V6, 5 spd., BVR759 **\$9,988**

'85 Toyota Mini Van 7 pass., dual air, AT. CAG328 **\$10,988**

'85 Astro Van Cargo, V6, AT, PS. CER338 **\$8,988**

'84 Vanagon 7 Pass. All AM/FM load. BXP938 **\$10,488**

'85 S-10 Blazer 4x4, 4x4, V6, 5 spd., BVR934 **\$11,988**

1986 CELEBRITY EUROSPORT 2 DR. Bucket seats, tilt wheel, AC, gauge package & much more! Stk. 5758 **\$9,988**

1986 CAMARO Z-28 IROC V8, 5 spd., loaded including T-top. 5931 **\$10,488**

1986 MONTE CARLO SPORT COUPE 2 dr., AT, PS, PB, etc. 5755

1986 MAZDA 626 4 DR. SEDAN 5 spd. Stk 5834 **\$11,988**

1986 CHEVY S-10 BLAZER V6, 5 spd., retail \$14,693. LT5730 **\$13,588**

1985 CHEVY 4x4 S-10 P'UP Air, loaded. retail \$14,904. LT5307 **\$12,388**

1986 ASTRO 8 PASS. VAN V6, AT, air, retail \$16,079. LT5544 **\$11,988**

\*Rates available from 5.9% APR depending on length of contract & model you choose.

**JIN CHEVROLET MAZDA**

2999 N. NIMITZ HWY. 836-1222  
 One Block Ewa of Lagoon Drive

**OVER 400 CARS & TRUCKS**

**INVENTORY CLEARANCE 5.9%\*** Annual Percentage Rate

the functional **CABARELLOS** NO REASONABLE OFFER REFUSED on our most popular **CUTLASS SUPREMES** the stylish **CUTLASS CIERAS** (4 cylinder)

\*on approved credit for limited time on select models only

Westridge Showroom  
 98-150 Kaonohi St  
**487-5526**  
 Mon-Fri 10 a.m.-9 p.m.  
 Sat. 9 a.m.-8 p.m.  
 Sun 10 a.m.-6 p.m.

**PACIFIC OLDSMOBILE & GMC**  
 Subject to prior sale. Price + tax & lic.

**FORD**

'77 T-BIRD Blue/white. nice shape \$1550 Bob 422-1200. 422-1600.

'79 GRANADA. 6 cyl. p/s. p/b p/w. a/c. new trans. shocks. brakes. \$1995. 239-4028

'79 MUSTANG 2 door. new AM/FM stereo. a/c. all power. no rust \$1595. 247-0928

'79 FORD Ranchero. 848-2737 8am-12pm. Monday-Friday

'79 MUSTANG 2 door. new AM/FM Stereo. a/c. all power. no rust. \$1775. 247-0928

'79 GRANADA. red. two tone. 2 door. 6 cyl good condition. air p/w AM/FM radio. \$1400/offer Call 395-2080

'80 MUSTANG. Auto. AM/FM cassette. very low mi. p/s. excl. cond. \$2795/offer. Call 261-1344

'82 T-BIRD loaded. sunroof. good tires. excl. cond. \$5600/offer. 839-8244/247-5795

'83 MUSTANG GLX. Auto. air. cruise. flip roof. AM/FM + more. \$4100 672-4113

'84 ESCORT Station Wgn., AM/FM 4 wheel drive. p/s. low mi. great condition \$4750 Call 624-6018.

**HONDA**

78 CIVIC Hatchback 4 spd. runs great no rust. moving. must sacrifice. \$1400 Ph 261-3213 eves

76 CIVIC CVCC. economical. std. 4 spd. hatchback. \$500/offer 254-1688

**CUTTER FORD - MILITARY FINANCING AVAILABLE**

'76 COROLLA #7597.....	\$395	'75 CUTLASS SUPREME #7660.....	\$595
'78 MUSTANG #7656.....	\$895	'70 DUSTER #7662.....	\$695
'80 MUSTANG #7658.....	\$1295	'77 GRANADA #7666.....	\$795
98-015 Kam Hwy., Aiea * Ph. 487-3811 MAY 17, 18, 19		'80 CITATION #6784.....	\$595

'80 CITATION #MENS36 Transportation Spec.	\$695	'78 OLDS CUTLASS 2 DR. #88C010 Very Low Miles	\$2995
'73 VW BUG #BRN793 Economy Special	\$895	'79 PLY. SAPPORO #ADCF341 Clean	\$1795
'70 VW BUG #4511	\$995	'79 GRAND PRIX #8WY075 Like New	\$1795

**RAINBOW USED CARS WILL FINANCE Ph. 943-0031**  
**CHEVROLET** 1799 Kapiolani Blvd. Subject to prior sale  
 (corner of Kapiolani & Kalakaua)

**HONDA**

78 CIVIC Accord hatchback Good condition \$3 500/offer 262-5229

'82 CIVIC wagon 5 spd. air new tires Excl cond \$4100 offer 623-0104



**'84 CUTLASS CIERA  
BROHAM**  
P/ WINDOWS, A/C, 6 CYL.  
BEAUTIFUL CAR #MMM 350  
WAS \$8,295  
NOW  
**\$7495**

**Pardon  
our  
dust...**



**'83 FORD 12 PASS.  
VAN**  
#HGC 365  
AIR COND. & AUTOMATIC  
WAS \$8,495  
NOW  
**\$6995**



*While we beautify & improve  
our store for you!  
You'll love our new look!*



**'81 CHEVY PICK-UP**  
#607 TCE  
V-8, AUTOMATIC  
WAS \$6,995  
NOW  
**\$4995**



**'79 TOYOTA CELICA**  
#AER 049  
AUTO., A/C, UNDER 50,000 miles  
VERY NICE!  
WAS \$4,295  
NOW  
**\$3295**

**'81 SUBARU 3 DR.** NOW  
#BTX 274  
RUNS GREAT  
WAS \$2995 **\$1695**

**'76 COROLLA SR5** NOW  
#ADR 482  
PRE-CONDITIONED  
SALE PRICE  
WAS \$2995 **\$1495**

**'70 MAVERICK** NOW  
6 CYL., AUTO.  
#AAY 637  
VERY CLEAN!  
WAS \$1995 **\$995**

**'79 OMNI** NOW  
#ANG 057  
AUTO, SUPER CAR!  
WAS \$2495 **\$1395**

**'82 MAZDA GLC** NOW  
#BGR 475  
AUTO, A/C  
WAS \$4495 **\$3295**

**'84 MAZDA GLC** NOW  
#HHA 742  
4 DR., AUTO, A/C  
WAS \$5995 **\$4895**

**'85 MAZDA 626** NOW  
#MJP 009  
4 DR., AUTO, CASSETTE, A/C  
WAS \$5495 **\$4295**

**'78 280 Z** NOW  
#ASE 190  
BEAUTIFUL RED  
WAS \$5495 **\$4295**

**SHELLY MAZDA WAIPAHAU**

94-212 LEOKU ST.

PHONE: 677-0761

100% FINANCING O.A.C.

**\$9899**

**'86 MAZDA 626 4-DR. DELUXE**  
5-speed,  
power steering



20 626's available  
at this Special Price

**\$199** a month  
\$1,770 down;  
13.50% annual  
percentage rate;  
60 months

Mazda Motor Corp., Shelly Mazda and its employees  
sincerely believe they represent the finest product in  
its class. They invite your comparison before you buy.

**SHELLY MAZDA**

Ph: 521-8080  
830 Kapiolani Blvd.  
Honolulu



Ph: 677-0761  
Opposite Gem  
Waipahu

**NO PAYMENT 'TIL OCT.**

Based on 48- or 60-month Financing

OR

**\$1000  
CASH BACK**

OR

**5.9%**  
Annual  
Percentage  
Rate



**'86 MAZDA 323 SEDAN**

**SHELLY MAZDA**

Ph: 521-8080  
830 Kapiolani Blvd.  
Honolulu



Ph: 677-0761  
Opposite Gem  
Waipahu

**WE ARE OVERSTOCKED  
WITH USED CARS  
WE WILL NOT REFUSE ANY  
SERIOUS OFFER  
STOP BY TODAY  
AND MAKE OFFER**

**13" COLOR TV or  
MICROWAVE  
WITH EVERY PURCHASE**

- '79 BUICK REGAL (AEV031) Auto. Air. AM Radio.
- '79 DODGE ST REGIS 4 DR. (AXR223) Auto. Air. AM Radio.
- '77 CHEV MALIBU 4 DR. (ARF254) Auto. Air. AM Radio.
- '82 FORD FUTURA 2 DR. (BBW738) Auto. Air. AM Radio.
- '80 FORD LTD 4 DR. S/W (BAB231) Auto. Air. AM Radio.
- '79 CHEV IMPALA 4 DR. (AJB273) Auto. Air. AM Radio.
- '85 FORD TEMPO GL 4 DR. (BYG737) Auto. P/S. Air. AM/FM Cass.
- '80 OLDS OMEGA 4 DR. (BER031) Auto. Air. AM Radio.
- '82 FORD EXP 2 DR. (BFP943) 4 spd. AM Radio.
- '84 CHEV CAVALIER 4 DR. (MJW572) Auto. Air. AM Radio.
- '78 CADILLAC ELOORADO (AXR427) Auto. Air. AM/FM Cass. Leather. P/D/Lock.
- '81 VOLKS RABBIT 2 DR. (AYU674) 4 spd. AM Radio.
- '85 CHEV SPRINT 2 DR. (BWG586) 5 spd. AM Radio.
- '84 CHEV CELEBRITY S/W (BUP072) Auto. Air. AM Radio. 6 cyl.
- '81 BUICK LESABRE 4 DR. S/W (BFB5B1) Auto. Air. AM/FM Cass.
- '82 DASTSUN 280ZX (BXV632) 5 spd. Air. AM/FM Cass.
- '80 PONTIAC BONNEVILLE S/W (BTP514) Auto. Air. AM/FM Cass.
- '83 FORD FUTURA 4 DR. (BTS271) Auto. AM Radio.
- '82 PONTIAC J2000 4 DR. S/W (ATN113) Auto. Air. AM/FM Cass.
- '82 FORD ESCORT. (BDX294) 4 spd. AM Radio.
- '82 DATSUN 210 2 DR. (MFK171) 4 spd. AM Radio.
- '81 TOYOTA TERCEL 2 DR. (BEA934) 5 spd. AM Radio.
- '79 DATSUN 280ZX 2+2 (AAS443) Auto. Air. AM/FM Cass. P/D/Lock.
- '79 DATSUN 510 S/W (BJA758) Auto. AM/FM.
- '84 CHEV CHEVETTE 4 DR. (BYT323) 4 spd. Air. AM Radio.
- '83 DODGE SHELBY 2 DR. (EYZ321) 5 spd. AM/FM Cass. P/S.
- '85 PLY RELIANT LE 2 DR. (COR528) Auto. Cruise. Air. AM/FM Cass. P/W.
- '84 FORD TEMPO GL (BXU005) Auto. Air. AM Radio.
- '78 TOYOTA LANDCRUISER (BAS461) 4 spd. AM Radio.
- '78 TOYOTA CELICA 2 DR. (BFY156) Auto. Air. AM Radio.

100% Financing Available Subject to prior sale  
MANY MORE CARS TO CHOOSE FROM

**NISSAN**

# Windward

46-151 Kahuhipa St. in Kaneohe  
Call 235-6433

**---\$2 OFF W/THIS AD---**  
**HONOLULU RENT-A-CAR**  
487-2702

## \$4995 wk.

+ Insur.  
Monthly Rates Available

**FREE Mileage    FREE Map    FREE Airport Pickup**  
98-360 Kam Hwy., Aiea (Next to ARCO Gas Station & BC Used Cars)

**HONDA**

'83 ACCORD LX, 3 door, 5 speed, lite blue, loaded. Must sell by May 25. \$7000. Call 254-1092

**JAGUAR**

'76 JAG XJ12C, immac. cond., truly a classic car. Perfect woman's car. \$17,500. 735-2217

**MAZDA**

'80 GLC - 5dr, hatchback, auto., \$2000/offer. Call 261-4514.

'80 RX7, auto., a/c, AM/FM, sunroof, dark gray w/blk interior, low mi., \$4550/OBO. Call 263-6375

80 HATCHBACK, good cond., recent tune up. \$1200. 262-7786 after 6 p.m.

'80 GLC 5 dr., Hatchback, auto., runs well \$1775/offer. 395-3775. 521-0842

'81 GLC, bronze, good cond., must see! Buy now! Best offer. 486-3051

'81 MAZDA GLC Wgn, 4 spd., new tires Excl. cond. No rust. \$2100 737-2717.

'85 MAZDA RX7 GSL Loaded! Must see this great car! 456-5410 after 5 p.m.

'85 626SL - 4 dr sedan loaded, low mi., asking \$8500. 499-1191

**MERCEDES**

EUROPEAN Model, '87 250 SE. Excl. Thru out. White w/gold interior. Runs extremely well. \$3375. John 261-1009

**MGB**

'80 MGB, 35,000 mi., 1-owner A-1 cond. \$4995/best offer or trade. 396-8282 Purchased new 7/81. Also, other items for sale.

**NISSAN**

'83 SENTRA, 5 spd., air low mi. AM-FM stereo, 22,000 mi., like new. \$3995 Call 247-2593 leave message.

'84 SENTRA 2 dr., 5 spd., rustproof, very clean \$3600. Ph. 395-2903

**PLYMOUTH**

'80 PLYMOUTH Volare \$1500/best offer. 254-4679

**PONTIAC**

'76 ASTRE Safari - 5 spd., \$500/offer as is. 235-6353 6:30-9:30 a.m. Also after

**TOYOTA**

'68 TOYOTA Deluxe - 1900cc, auto., blown motor, excl. body/trans. Offer. 254-2685

'74 CELICA, engine overhauled, no rust, excl. cond. \$1750/offer Call 235-8026

'76 CELICA 5 spd., modified engine, lots of extras. Must sell \$2150/offer. 941-9569

'79 CELICA, auto., air, excl. cond., low mi. \$3000 235-6266. 471-9180 iv. mess.

'80 COROLLA, a/c, 4 dr., 5 spd., 47,000 mi., 4 new radials, AM/FM cass. Excl. cond. \$3150/offer. 595-2466

'80 CORONA, luxury edition, p/s, p/b, air, tinted windows. Must Sell. \$3200 or best offer. Call 254-3102 anytime.

'80 TERCEL - Auto. runs great! \$2200/offer 247-4531 after 7:30 p.m.

'81 TOYOTA Celica GT, 5 spd., low mi. 27,000 1 owner, clean \$5300. 261-6834

'81 TERCEL 4 dr. 5 spd., radio, new tires. \$2200. 247-5172.

'81 CORONA, Luxury Edition, auto., p/s, p/b, air, superb cond. \$5000. 261-3639

'81 TOYOTA Corolla, 2 dr, sedan deluxe, excl cond \$3300 Ph 239-5130

'83 COROLLA, low mi., 5 speed, tinted windows, air excl. cond. \$5600 262-9342

'83 TERCEL, 4 dr, hchbk., auto., p/s, p/b, air, low mi., excl. cond. \$5000. 261-3639

'84 TOYOTA Cressida Air, auto., sunroof, leather, cassette, graphic equalizer, low mileage. \$12,500. 395-6643

# MIKE SALTA GOOD NEWS REPORT



PRICES ON ALL PONTIAC FIERO COUPES HAVE NOW BEEN REDUCED BY '650

**\$7995** IS NOW THE CASH PRICE FOR A NEW '86 PONTIAC FIERO #227147

PONTIAC MOTOR DIVISION ANNOUNCES ALL NEW PONTIACS ARE NOW ELIGIBLE FOR NEW, LOW 7.9 ANNUAL PERCENTAGE RATE FINANCING, SOME MODELS FOR AS LOW AS 5.9%

**\$8695** IS NOW THE CASH PRICE FOR A NEW '86 PONTIAC GRAND AM ORDER NOW!

GMAC ANNOUNCES NOW PONTIACS CAN NOW BE LEASED WITH ANNUAL PERCENTAGE RATE FINANCING LOWER THAN EVER!

**\$6995** IS NOW THE CASH PRICE FOR A NEW '86 ISUZU I-MARK #11828

THROUGH THE PONTIAC MOTOR DIVISION, COLLEGE GRADUATES CAN NOW PURCHASE NEW CARS WITH LESS THAN 5% DOWN EVEN WITHOUT PREVIOUS CREDIT.

**\$8995** IS NOW THE CASH PRICE FOR A NEW '86 PONTIAC FIREBIRD #238765

ISUZU ANNOUNCES THE INTRODUCTION OF ITS NEW 4-DOOR TROOPER II FEATURING GREATER PASSENGER CONVENIENCE AND SAFETY.

**\$9995** IS NOW THE CASH PRICE FOR A NEW '86 ISUZU IMPULSE #05029



VEHICLES ARE SUBJECT TO PRIOR SALE. PRICES ARE PLUS TAX, LICENSE AND DOCUMENTARY FEE, AND VALID THRU 5-22-86

**MIKE SALTA  
PONTIAC-ISUZU**  
2945 N. NIMITZ HIGHWAY  
Ph. 836-2441

**TRIUMPH**

'71 TR6, New Paint, Ideal island car. Must see. \$1700. Call 486-3051

**VOLKSWAGEN**

'68 VW Single Solex carburetors, good body, clean car. \$650 262-7786 eves

'69 ANGLE Chop Bug, new paint, alloys. \$6000/offer. Ph. 732-7865 before 7 p.m. Kalaui. Leave message.

'70 VW Bug, body good cond. 1776cc. 48's. Rebuilt heads & trans. Offer. 247-6700

'70 VW Bug, 1776 dual-44S chrome motor, clean car. 235-2327

'71 SQUAREBACK, automatic, excellent running condition \$500/offer. Call 257-2209 days. 486-9694 eves.

'73 BUG 4 spd cass. stereo, tinted windows good cond. Offer 638-9033

'74 SUPER BEETLE - Excl. cond. \$1600 firm. 254-3020

'75 BUG as is, needs repairs \$650/offer. 455-7043

'77 VW Rabbit, 4 spd., 4 dr., runs well, clean \$850. Ph. 247-6707 or 247-4653

'78 RABBIT L, sunroof, 4 dr., auto., stereo, good cond. \$1600 or offer. 261-4407

'79 VAN, 7 passenger 31,000 mi., 1 driver. Must see \$5200/offer. 239-7073.

'80 SCIROCCO, 4 speed, Std., low mi. \$3400/offer. 521-8311 or 261-2891

'80 RABBIT Diesel, original owner's Tuffkote \$1700/offer. Call 621-9032

**ON THE ROAD AGAIN**  
Friend of the Family

**FRIDAY • SATURDAY • SUNDAY**

**FREE**

- HOT DOGS
- BALLOONS
- SODAS

**KDEO**  
COUNTRY RADIO 94 AM

DANCERS / LIVE BROADCAST  
**JL COUNTRY BAND**

**DRAWING FOR CAR**

4:30 p.m. - Saturday 5/17/86

**FREE GAS**  
WITH EVERY PURCHASE

**USED CARS**

<p>'79 DATSUN 280ZX 5 spd AM/FM stereo cass., rear louvers, radial tires. This is no mistake — ACT IMMEDIATELY. #ASG199</p> <p>'82 PONTIAC 6000LE 4 DR Fully loaded, ventur int., a/c, mirror. In color. What a steal — THE SECRET SHELLY SAVER #ATS114</p> <p>'79 COUGAR XR7 V8, auto., p/s. Fantastic Transportation. This price is no mistake — ACT NOW #ADF269</p>	<p>'73 VW BUG Hurt splitter, stereo cass. Last of a Breed. \$1000 Price Reduction. Must see — DONT DELAY #AR0851</p> <p>'80 VW CAMPER Std. fully equipped. Sun roof. \$2000 price reduction. FIND ONE CHEAPER — WE DARE #HX218</p> <p>'81 CHEVY 1/2 TON P/U V8, auto., p/s, long bed, new paint. You can't steal this one today. ACT NOW — ONLY 1 AT THIS PRICE #54HTCE</p>
<p>\$4995</p> <p>\$3995</p> <p>\$995</p>	<p>\$1995</p> <p>\$3995</p> <p>\$3995</p>

**SHELLY CARS**  
NIMITZ & LAGOON 5 min. from Hickam Gate 836-0466 OPEN 'TIL 9 P.M. EVERY DAY