

# Hawaii Marine

Vol. 15, No. 20

MCAS Kaneohe Bay, Hawaii

May 22, 1986

## Armed Forces Day

See CELEBRATION /B-1



A cammie-stick-painted Jeremy Goodspeed gives the thumbs-up "Go!" signal from the cockpit of "his" CH-46 helicopter. Capt. Stan Gould photo

## New FMFPac SgtMaj arrives

Camp H.M. Smith — Sergeant Major Louis Pichler will relieve SgtMaj. Lee M. Bradley as FMFPac Sergeant Major during ceremonies to be held tomorrow, starting at 4 p.m., at Bordelon Field, here.

Pichler enlisted in the Marine Corps in April 1950. After completing recruit training in MCRDSan Diego, he was assigned to the 2d Marine Division at Camp Lejeune, N.C. In 1951, he was sent to Korea where he served with "I" Co., 3/5; earned a Navy Commendation Medal, with Combat "V", and was awarded the Purple Heart Medal.

In 1959, he was assigned duty with the 1st Marine Division, and a year later went overseas to serve with the 9th Marine Regiment on Okinawa. From Okinawa, he returned to Camp Pendleton where he again served with the 1st Marine Division.

From Camp Pendleton, Pichler returned to San Diego, but this time to serve as a Drill Instructor for 2½ years. From there, he went to Sand Point, Wash., where he served on Inspector - Instructor Duty with the reserve unit there.

In 1967, Pichler was assigned for duty in the Republic of Vietnam where he served as the company gunnery sergeant for "F" Co., 2/5. He returned to the US in 1968 and served as the first sergeant for the Basic Infantry Bn., at Camp Pendleton.

From Camp Pendleton, Pichler was assigned as the Marine Detachment First Sergeant aboard the USS Long Beach, which operated off of the Vietnam coast.

In October 1973, SgtMaj. Pichler was assigned to Marine Barracks, Puget Sound Naval Shipyard, Bremerton, Wash., where he served for three years. After this tour, Pichler was assigned to overseas duty and served as the Group Sergeant Major for MAG-12, MCAS Iwakuni, Japan. In October 1977, he was assigned as Group Sergeant Major for MCCRTG-10, at MCAS Yuma, Ariz.

His next tour of duty took Pichler back overseas where he served as Group Sergeant Major for MAG-12, on Iwakuni. From there, in August 1979, he was assigned as Wing Sergeant Major, 1st MAW, on Okinawa, a post he again held in 1984-85.

After his tour with 1st MAW, SgtMaj. Pichler returned to the U.S. to serve as the Wing Sergeant Major for the 3d MAW, at MCAS El Toro, a post he held from March 1981 to June 1984.

In July 1985, Pichler was assigned as the COMCAB-WEST and Station Sergeant Major at MCAS El Toro, the post he held until his assignment to FMFPac.

Pichler, and his wife, Judy, have four sons and one daughter.

## Station ERC opens Oct 1

By LCpl. Hugh Trask

With the opening of Pearl Harbor's Spouse Employment Assistance Program, May 15, the first steps have been taken, here, to open a satellite program — the Employment Resource Center.

The station's ERC is scheduled to open Oct. 1 and

it will be an information bureau not an employment agency.

The center will provide military family members with information concerning the job market in a particular area including outside of Hawaii; an evaluation of their skills; and workshops on subjects ranging from

writing a resume to grooming themselves before a job interview.

The ERC will coordinate with other satellite programs at Army, Navy, Air Force, Coast Guard and Marine Corps installations on Oahu. The Navy will manage the interservice spouse employment program for their first year, and then it will rotate to a different branch of the service each year.

The Joint Employment Management System, the coordinating agency located at Pearl Harbor and staffed by the Navy, will design

training programs and workshops; coordinate with civilian employment agencies; coordinate workshop presentations; and market the JEMS program to civilian employers.

JEMS will also maintain a job bank — a list of companies with job openings that can be matched to lists of ERC patrons by their skills; evaluate the local job market; and train volunteers.

Currently, three spouse employment centers are operating on Oahu, which are located at Fort Shafter, Hickam and Pearl Harbor.

Any military family members can request help from these centers.

According to Capt. Barbara Johnson, coordinator of Camp H.M. Smith's satellite program, ERCs will not be run on a priority basis; family members will receive equal service on a first-come, first-served basis no matter what their spouse's or parent's rank is. Counseling will be provided by a qualified civil service employee.

If you want to volunteer or become involved in the program, call 257-2128.

**INSIDE**

Salutes	A-7
At A Glance	A-8
Around The Corps	A-9
Movies	B-5
What's cooking	B-5
Ticket info	B-5
Sports Shorts	B-6
Island Happenings	B-6
Religious Services	B-6
Special Services	B-7



Lt. Col. Hugh Trask photo

### Change of Command

Lieutenant Colonel John C. Boulware (right), the new commanding officer of HMM-265, is congratulated by Lt. Col. J.L. Larue, the squadron's former commanding officer, during a change of command ceremony on Dewey Square, May 14. Boulware, the squadron's former executive officer, assumed the commanding officer's post while Larue assumed duties as the executive officer of MAG-24.

## Memorial Day Message



26 May 1986

A MESSAGE FROM THE COMMANDANT OF THE MARINE CORPS

From the Revolutionary War to rescue operations in Grenada, Marines have forged the frontiers of freedom. Many have given their lives in defense of that freedom so as to advance the cause of peace.

On this Memorial Day, we reflect upon the brave and heroic service of these fallen Marines. We remember the ultimate sacrifice they and other servicemen have made to preserve freedom.

While we honor these patriotic men and women who have died in the service of our country, let us also pay tribute to the countless families who have suffered and endured the loss of their loved ones. For it is they who can appreciate the true cost of our heritage. Their quiet courage continues to be a source of national strength, as the torch of freedom is passed from generation to generation.

Today, as we honor our fallen comrades, let us also resolve that our Marine Corps shall remain, as it has for 210 years, the first to fight in defense of freedom.

Semper Fidelis Marines!

*[Signature]*  
General, U.S. Marine Corps



USMC photo



# 75 years of Marine Corps Aviation

Washington, D.C. — New aircraft and the equipment to command and control them have put Marine aviation at a new crossroads in its 74-year history.

According to LtGen. Keith A. Smith, deputy chief of staff for Aviation, Marine air hasn't experienced anything like its current modernization program since the introduction of the jet engine.

Upgrading the Marine Corps' aviation element began in the late 1970s. Until then, about the only new aircraft to arrive on Marine flightlines in two decades was the AV-8A Harrier in 1971.

Although this unique aircraft added a valuable close air support dimension, it didn't fill the gaps caused by other aircraft like the F-4, A-4, CH-46 and CH-53A/D.

Today, that trend is reversing as Marine aircrews are delivered some of the most technologically advanced aircraft in the world.

## Status of Marine Aviation

If that technology is expensive, it is also worth the price, according to LtGen. Smith, who recently briefed a DoD subcommittee on the status of Marine aviation. "We are reaching levels of preparedness unparalleled in Marine aviation's history,"

he said. "The record high levels of aircraft readiness I reported last year were surpassed in 1985..."

Smith attributes the steady increase in preparedness — up more than 13 percent since 1981 — to a combination of good planning and modern technology. "Although new aircraft being introduced to the fleet today have the latest affordable technology, they also reflect a concerted effort to design reliable and maintainable systems," he said.

A case in point is the F/A-18 Hornet, an aircraft that is already approaching legendary status to the Marines who fly it. Its impressive performance in 1985 included an 85 percent mission-capable rate and an 82 percent full mission-capable rate.

Calling the introduction of the Hornet superb in every way, the general emphasized its dual role as either a fighter or attack craft. "It offers the promise of being the most versatile aircraft ever introduced," Smith told the committee.

Three F/A-18 squadrons are currently operational on the West Coast. On the East Coast, one squadron is on line, with two due to transition this year and two more scheduled to form in 1987.

## AV-8B Harrier II On Line

Keeping the Hornet company over the front lines is the AV-8B Harrier II, a much improved version of the Corps' first generation of vertical take off aircraft. The new Harrier matched the Hornet's mission-capable rate in 1985 and finished slightly behind with a 79 percent full-mission capability.

When the AV-8B is fully introduced, the Corps will have eight light attack squadrons and one training squadron. Full introduction of both the Harrier and the Hornet will replace the A-4 and F-4 aircraft now in service.

In addition, plans call for providing each of the new aircraft with night attack systems, which consists of night vision goggles for the pilot, navigational forward-looking infrared devices and a moving map display. These systems will increase aircraft survivability while overcoming the obstacles of night combat operations.

## Rotor Aircraft Also Upgraded

Modernization hasn't been restricted to only fixed-wing aircraft. When the CH-53E Super Stallion was first introduced in 1981, the Marine Corps received the free world's most powerful heavy helicopter.

The CH-53E can lift the light armored vehicle and the M-198 howitzer, making it ideally suited for MPS heavy lift requirements. The helicopter can self-deploy up

to 1,000 nautical miles, and its range can be extended through aerial refueling.

Three Super Stallion squadrons are operational, and a fourth is scheduled to come on line in 1987. If a Department of the Navy request is approved, two additional squadrons will be formed by 1994.

Marines will also receive a new attack helicopter, the AH-1W Super Cobra. Powered by beefed-up engines, the Super Cobra will be able to operate more effectively at high altitudes and in hot environments. Making it particularly lethal is the Hellfire missile system that can penetrate armored forces at greater distances than current anti-armor weapons.

In addition to receiving new AH-1Ws straight from the manufacturer, the Corps will eventually upgrade all of its AH-1T Cobras to AH-1W specifications.

## Osprey Being Developed

Among the most dramatic changes in Marine aviation is the MV-22 Osprey. Though still in the developmental stages, the tilt-rotor aircraft promises to be more than just a replacement for the aging CH-46. Described by LtGen. Smith as a "force multiplier," the Osprey is the number one priority in Marine aviation.

"The MV-22 permits a rapid, unprecedented build-up of combat power ashore... American Marines may be employed well in advance of a combined surface assault to

isolate the objective area and block potential counterattacking enemy forces," the general explained.

Trying the Osprey's future role to the Maritime Pre-positioned Ships program, according to LtGen. Smith, "the strategic and tactical applications of the MV-22 far exceed the speed and range capabilities of the existing CH-46 fleet.

"Independent of critical sea and airlift," said Smith, "the Osprey may be strategically deployed over an unrefueled range of 2,100 nautical miles. This capability enables a timely marriage of aviation forces with those around elements assigned to MPS brigades."

## Command, Control Equipment Modernized

The modernization of aviation command and control equipment is keeping pace with the tactical aircraft improvements, LtGen. Smith assured committee members.

"The Tactical Air Operations Module provides a state-of-the-art automated command and control system essential to maintaining an integrated air defense for the MAGTF. It can track twice as many enemy aircraft and can be linked to systems of other U.S. services and allied command and control agencies," LtGen. Smith said.

The TAOM is modularized and can be tailored to the size of the operation. As a result, the strategic and tactical lift

required to move it has been reduced by two-thirds, making it rapidly deployable.

Brand new on the 1987 budget worktable is a request for the improved Direct Air Support Center, essential to the control and integration of close air support and assault support missions.

General Smith characterized the current DASC as "old, worn out and unsupportable due to a lack of replacement parts." The IDASC, he explained, is a short-term, low-cost solution that will provide needed support until the Marine Integrated Fire Support System is fielded in the 1990s.

## Marine Air Begins 75th Year

As Marine air begins its 75th year, its importance continues to grow. It is one of the basic components of the Marine Air Ground Task Force, an organization looked to by the nation as its "force in readiness."

LtGen. Smith's words, the "support requirement of a MAGTF demands a flexible and responsive aviation combat element task organized to meet the anticipated threat across the entire range of potential operating environments."

The current modernization of Marine aviation ensures that when the call "land the Marines" is sounded, Marine air will be there — more ready and capable than ever before.

By SSgt. Fred Carr  
DirPA HQMC

# New recognition for Vietnam Memorial

In May 1969, a B-52 bomber bound for a combat mission in Vietnam crashed on takeoff from Guam.

The five crewmen killed in that crash, and 90 other servicemen who died in Southeast Asia, will receive special recognition at this year's Memorial Day ceremonies at the Vietnam Veterans Memorial in Washington, D.C.

For the first time since the memorial was completed in 1982, the names of these 95 men — who died outside the immediate combat zone but while on or in direct support of combat missions during the Vietnam Conflict — will appear with the other 58,022 names etched in the

memorial's shiny black granite.

Thirteen more names, some of men who died from combat wounds since the memorial's completion and others inadvertently left off the original monument will also be included.

The Defense Department reviewed its records and came up with the additional names after the Vietnam Veterans Memorial Fund Committee broadened its definition for eligibility to be named on the monument.

Originally, the wall included only the names of those service members who died in the immediate combat zone in Vietnam, Cambodia and Laos, a committee spokesperson explained. Those who died outside that

immediate area, even if they died enroute to the combat area or in support of combat operations in that area, were not included.

Air Force Maj. Jungus Jordan, DoD project officer for the effort, said DoD has sent notices on behalf of the committee inviting family members and friends of these service members to attend this year's Memorial Day ceremonies in Washington, D.C.

He said DoD has been able to track down about 80 percent of the family members, even though some of these service members died as many as 16 years ago.

By Donna Bolinger  
American Forces  
Information Service



## From the President

Each Memorial Day we pause to recall with love, with pride, and with gratitude those members of our Armed Forces who made the supreme sacrifice in preserving our liberty.

We Americans traditionally celebrate Memorial Day with picnics, parades, and the opening of swimming pools and beaches. While we look forward to this day as the unofficial beginning of summer, we also know it is a time of painful memories — memories of the many courageous Americans in all our wars who fought and died so that we could live in peace and freedom in this blessed land.

Today we pay solemn tribute to our fallen heroes. We know that we can never give them as much as they gave us, but we and succeeding generations can see to it that they did not die in vain, by keeping the flame of freedom burning brightly. As we observe this Memorial Day, let us also remember that the best way to preserve our peace and to prevent future wars is to keep our Armed Forces strong and ready.

*Ronald Reagan*

Ronald Reagan

## Punchbowl Memorial Service

The traditional Mayor's Memorial Day Service will be held Monday starting at 8:45 a.m., at the National Memorial Cemetery at the Pacific at Punchbowl.

After a musical prelude by the Royal Hawaiian Band, the master of ceremonies will signal for the posting of the 50 state flags in order of each state's admission to the union. The national colors will then be posted.

A benediction will be followed by a salute to the dead by the U.S. Army; a 21-gun salute by the U.S. Marine Corps; and a low altitude "missing man" flyover by the Hawaii Air National Guard.

Limited parking will be available in Punchbowl crater that morning. No

parking will be allowed in nearby streets. The City will provide shuttle bus service from the bus stop at Alapai and Hotel streets beginning at 8:15 a.m., with the last bus departing at 8:33 a.m. The buses' destination signs will read "Special" and a placard in the window will read "Punchbowl." After ceremony, riders will be returned to their Alapai/Hotel bus stop.

Free parking will be available in the civic center parking structure across from the bus stop for those who take the bus to Punchbowl. Fares of 60 cents one-way for adults and 25 cents one-way for children will be charged. Bus passes and transfer will be honored.

## The Secretary of Defense

As we observe this Memorial Day, we are gratified that it is another peaceful Memorial Day in which we can give full honor to those who gave all that they had to give in serving their nation.

From simple, modest grave sites in local cemeteries, to the Tomb of the Unknown Soldier in Arlington, Americans are united today in paying their respects, not only to our familiar military heroes, but to all of our now silent comrades, most of whom died far from home, defending our liberty and our freedom.

On each Memorial Day, we recognize anew that freedom and justice have always exacted a very high price. We also know that Americans have always been willing to pay this price, and will continue to pay any price this imperfect world may demand of us to retain our freedom and the heritage handed down to us by those we honor today. We can never do any less.

*Caspar W. Weinberger*

Caspar W. Weinberger

# Military Spouse day

Story and photo by Sgt. Leah Gonzalez

The observance of Military Spouse Day will give servicemembers the opportunity to pay tribute for the hard work, dedication and accomplishments of their spouses, tomorrow.

Sherry Christmas, wife of Col. G.R. Christmas, 3rd Marines' commanding officer, who is the Volunteer Executive Director of the Air Station's Navy Relief Society, was selected as the Marine Corps local selection for the "Outstanding

Military Spouse Award." "The thing about volunteering is that you don't think about rewards because you're so busy — sometimes I even forget to log in my hours. But it is definitely nice to be recognized," said Sherry, "and I'm honored."

She was nominated by Colonel R.P. Rogers, Station commanding officer, for her outstanding service to the Navy Relief Society. In his nomination letter, Colonel Rogers said, "The nomination of Mrs. Christmas is based on the many years of dedication and unselfish

volunteer work with the Navy Relief Society and with the civilian communities in Oahu."

Recognition is something Sherry has been getting a lot of lately. Recently, she received the Navy Relief Society's Meritorious Service award — the most prestigious award the Society presents. This was added to her many letters of appreciation and award pins for hours of service to Navy Relief.

Her husband, daughter, Tracy, and sons Jim, Kevin and Brian, share the pride for

her accomplishments. "She's always been so tremendously involved; and I'm proud of what she has accomplished," said Col. Christmas.

He feels the observance of Military Spouse Day is very important. "We need to recognize spouses and the important contributions they make. It's the wives groups, for example, that really provide support during deployments and training," he said.

Although she does a lot of volunteering, Sherry tries not to let it interfere with her family life. "I do most of my work during school and work hours so I can be home for them," she said.

Now, she only volunteers for Navy Relief and the Officers Wives Club. In the past though, she has worked as a counselor for the Christian Day Camp at Camp H.M. Smith; a Sunday school teacher at St. George's Episcopal Church in Honolulu; and has collected for the March of Dimes and Kidney Foundation.

"I can do all of my volunteering because I haven't had to get a paying job," said Sherry. "That's why volunteerism is so low now — so many more women have to work."

Sherry says she works as a volunteer because she knows that even one person can make a difference. "I enjoy my work and have met a lot of



Navy Relief Society Service Award

Sherry Christmas, executive director of Navy Relief, receives the Navy Relief Society's Meritorious Service Award from Col. R.P. Rogers, commanding officer of the Air Station, at an awards luncheon held at the Officers Club here, recently. The award is the most prestigious of its kind and is given for outstanding service and dedication.

## Memorial Day schedule

The following are the Memorial Day holiday hours for the Air Station Special Services and Club Activities:

Facility	Hours	Facility	Hours
Child Care Center	closed	Pool/Beaches	10 a.m.-5 p.m.
Recreation housing	7 a.m.-6 p.m.	Station Gym	11 a.m.-7 p.m.
Marina and Scuba Locker	9 a.m.-5 p.m.	Mini Gym	9 a.m.-5 p.m.
Scuba Tank air fills	7:30-9:30 a.m.	Ticket Office	closed
Wood Hobby/Multi-crafts	9 a.m.-5 p.m.	K-Bay Lanes	10 a.m.-10:30 p.m.
Auto Hobby	9 a.m.-5 p.m.	Golf Course	6:30 a.m.-7 p.m.
Skeet Range	9 a.m.-6 p.m.	Library	closed
		Theater	6:45-movie end
		Enlisted Club	4 p.m.-midnight (bar only)
		Officers Club	closed
		Staff NCO Club	closed
		Package Store	10 a.m.-6 p.m.
		Pizza Parlor	4:30-10 p.m.

## 'The Bus'

"The Bus" will begin servicing the Air Station at the Lanikai-Maunawili shuttle run expansion is planned to begin June 8.

The service will be on a trial basis, with runs every 90 minutes from 8 a.m. to 2 p.m.

The amount of people using the service will determine whether service is continued or increased.

More information on scheduling, rates, route, and ID requirements will be published in future issues of the Hawaii Marine.

## Motorcycle helmet stats

The study found that: Fatalities decreased from 38 per 1,000 crashes to 29 per 1,000.

The percentage of accident victims whose most severe injuries were to the face and head declined from 27 percent in 1981 to 9 percent in 1982.

Hospital costs for injured cyclists fell 48 percent from 1981 to 1982. Those riders who defied the law tended to stay in the hospital a lot longer than their helmet-wearing counterparts.

Combined data for 1981 and 1982 revealed a rate of 285 head injuries per 1,000 helmeted injured riders, compared with 634 for injured riders without helmets.

Feeling the wind whipping through your hair as you ride a motorcycle may be thrilling. But your chances of keeping your head — and your hair — intact are a lot better if you wear a helmet, according to a recent study commissioned by the National Highway Traffic Safety Commission.

The study was commissioned to measure the effects of Louisiana's 1982 law requiring motorcyclists and their passengers to wear helmets. Louisiana had suffered a 45 percent increase in motorcycle fatalities following the 1976 repeal of its first mandatory helmet law.

## Hawaii Marine

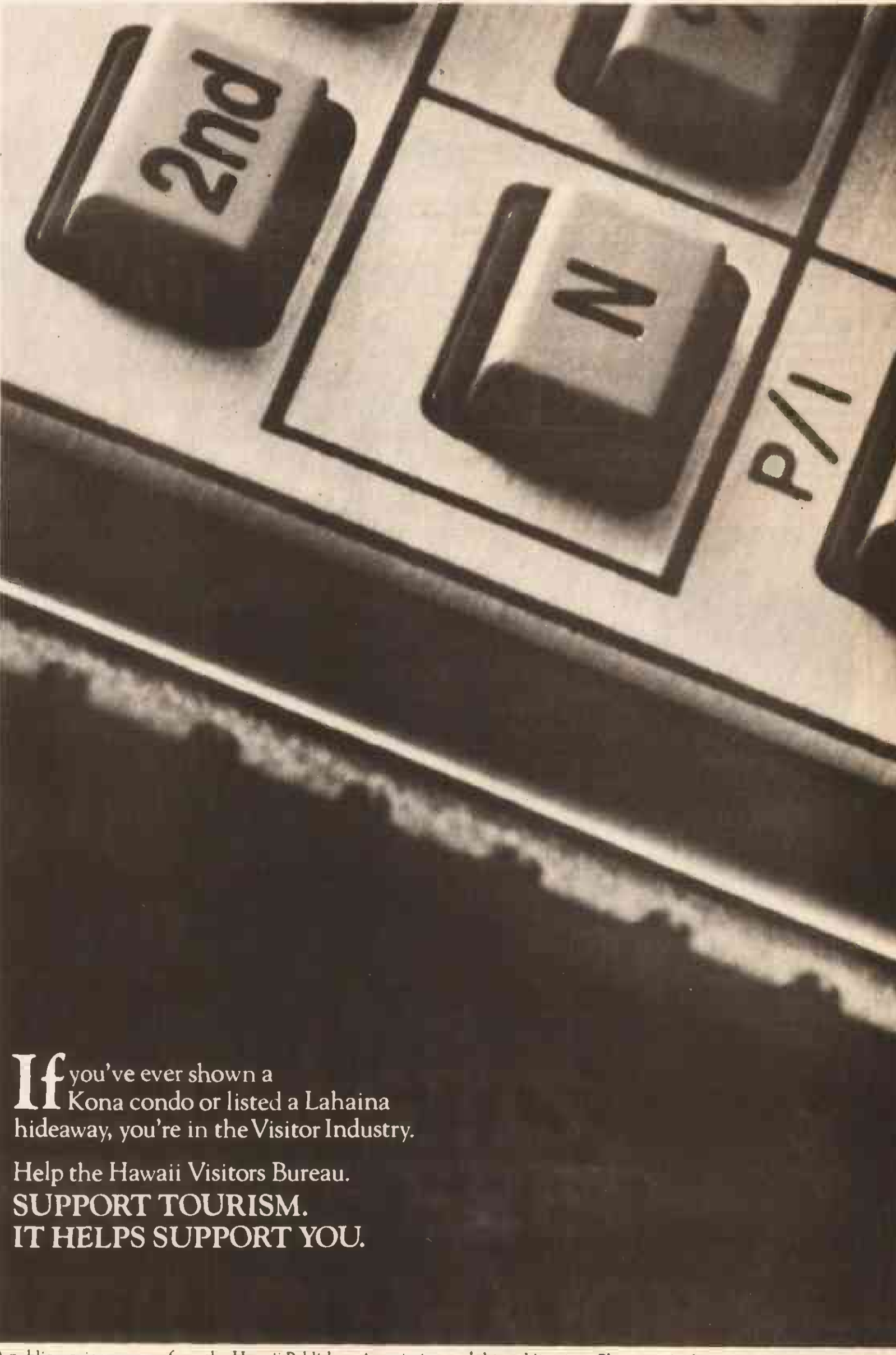
The Hawaii Marine is an unofficial newspaper published every Thursday by RFD Publications, Inc., 46-016 Alaloe St., Kaneohe, HI 96744, a private firm in no way connected with the Department of the Navy or the United States Marine Corps. All advertising is provided by the publisher, RFD Publications Inc., by calling 235-5881 or by visiting their office. Circulation is 8,000.

The editorial content is edited, prepared and provided by the Joint Public Affairs Office, Marine Corps Air Station/1st Marine Amphibious Brigade, Kaneohe Bay, Hawaii, 96863-5001, telephone 257-2178/2179. Opinions expressed by the publisher and journalists are their own, and are not to be considered an official expression of the Department of the Navy or the United States Marine Corps.

Articles for publication must be submitted to the Joint Public Affairs Office by 4:30 p.m., on Thursday for the following week's publication. The Hawaii Marine staff solicits articles and photographs from all Marine Corps, Navy and civilian organizations sanctioned by the Commanding Officer, MCAS Kaneohe Bay; however, the Joint Public Affairs Officer, or his designated representative, reserves the right to edit or rewrite materials submitted for publication. Submission does not constitute publication. All photographs published are Official Marine Corps photographs unless otherwise noted. The Hawaii Marine subscribes to the American Forces Information Service (AFIS), and Navy Editor Service (NES), which articles are published on a regular basis.

Items advertised in the Hawaii Marine must be made available for purchase, use, or patronage to everyone without regard to race, creed, color, national origin, religion, age or sex of the purchaser, user or patron. A confirmed violation, or rejection, of this policy of equal opportunity by any advertiser will result in the refusal to print advertising from that source. The appearance of all advertisements in the Hawaii Marine, to include inserts and/or flyers, does not constitute endorsement by the Department of Defense, the Department of the Navy or the United States Marine Corps, of the firms, products or services advertised.

A voluntary monthly contribution of \$1 from residents of government housing at the Marine Corps Air Station, Kaneohe Bay, may be requested by Sun Press carriers delivering the Hawaii Marine. This contribution is strictly voluntary, and residents will receive the Hawaii Marine whether they contribute or not.



If you've ever shown a Kona condo or listed a Lahaina hideaway, you're in the Visitor Industry. Help the Hawaii Visitors Bureau. SUPPORT TOURISM. IT HELPS SUPPORT YOU.



Corporal C. Demello (r), an assistant squad leader for A Co. along with fire team leaders Cpl. M. Little (center) and Cpl. D. McKinney (l), plan the route for their movement-to-contact phase.

## Co 'C' takes squad competition

Story and photos  
by Cpl. Stephen Frank

Rifle squads from Companies A and C, 1/3, recently spent nine days exercising their skills as infantrymen competing for the chance to represent 1/3 at the Regimental Squad Competitions to be held later this month. Co "C" took top honors.

"The squad competition was held to pick a squad to represent the battalion at the regimental level, and hopefully at the division level on Okinawa," said 1stLt. Reginald Tate, officer-in-charge of the competition.

The competition included live fire with the light anti-armor weapon, squad

automatic weapon, M60 machine gun, M203 grenade launcher and M16A2 service rifle; land navigation; various infantry tactics; minefield clearing; medical evaluations for the corpsmen; individual skills testing, and physical fitness events.

"The squad competition went very well," said Tate. "We identified some weaknesses in both squads, but both put out 100 percent. We couldn't have asked any more from our Marines. It's unfortunate we could only pick one squad, but we think we've got some good representatives for the battalion," continued Tate.

The competition squad from Co. C will now take a few days to get ready for the Regimental competition held this week.



Corporal Dwight Pringle, negotiates an obstacle.



The competing squad from Co. C, "humps" to Kansas Tower.



A UH-1N takes off from the flightline.



A CH-53D refuels directly from the fuel tanks of a CH-46E.

# HMH-463 sharpen skills

Story and photos by LCpl. Hugh Trask

To survive in combat, aircrews draw upon skills they have perfected in training.

The Marines of HMH-463 sharpened their survival skills, during a recent 10-day deployment to the Pacific Missile Firing Range, Barking Sands, Kauai, with combat maneuvering, transport of troops and electronic evasion tactics.

The squadron's CH-53D crews flew approximately 175 sorties to practice "dog fights" with other CH-53Ds and A-4 jets; meanwhile, the squadron's UH-1Ns flew 50 similar missions.

The aircrews also fired door-mounted machineguns; used radar to guide their helicopters in evasive

maneuvering; practiced counter measures against electronic tracking and jamming by enemy radar; and practiced transporting and inserting troops into combat areas.

Four days into the exercise, the squadron hadn't lost any of the mock sorties flown against attacking helicopters or A-4s.

To practice the transfer of troops into combat areas, the squadron simulated an amphibious, company-sized insert of Marines into Port Allen, and held multi-plane airlifts using six transport helicopters and four UH-1Ns.

According to LtCol. D.P. Pender, commanding officer of '463, the training — although basic in comparison to training received in

Weapons and Tactics Instruction at MCAS Yuma, and in electronic and counter-electronic warfare training at Nellis AFB, Nev. — complimented their training.

"WTI trains pilots in advanced tactics, climaxing everything they've learned from their home squadrons and showing them how all the tactics are coordinated with each other," said Pender.

Training there, according to Pender, set the basis of skills that pilots can draw upon for WTI. This training at Barking Sands taught them how to tell when they're under attack and how to avoid it. "The training is comparable to what we learn at Nellis; how to counter electronic jamming and how to evade radar," added Pender.

According to Pender, the squadron flew with more intensity than they fly here. The CH-53Ds flew over 200 flight hours during the 10-day exercise and the UH-1Ns flew over 11 hours, twice the normal number of flight hours put in during the same period while the squadron is here.

"The firing ranges and open training areas are at one site there. We don't have to fly very far, nor do we have to use a lot of fuel to get to them; we can train longer and more intensely," said Pender.

"The training went as planned," added Pender, "and we've had no problems. We owe that to the people at Barking Sands and our own ground crews who installed electrical wiring, set up our tents and helped organize our camp."



Corporals Lorry Yates (l) and Monte Gregg, HMH-463 helicopter mechanics, check the skin of a CH-53D.

## Doctor shortages

Due to staffing shortages and operational commitments, a physician will no longer be available at the Branch Medical Clinic at a 24-hour a day basis.

Starting on June 1, a physician will only be available from 7:30 a.m., to 10 p.m., daily, in Acute Care Service. An enlisted duty crew will be available at all times for emergency patient evaluation/assessment and for transportation to another medical facility if required.

A physician will continue to be available at Tripler Army Medical Center and the clinic in Pearl Harbor, 24 hours a day.

### Family Dental Care at Kaneohe Bay

Sickcall: Monday-Friday (except holidays) 4 to 6 p.m.  
Care: Monday-Friday (except holidays) 6 to 9 p.m., by appointment only.

Screening exams, preventive dentistry lectures, and fluoride treatments will still be conducted on the second Saturday of each month by appointment. Preschool children will be seen at this time.

All questions concerning dental care will be answered Monday-Friday, except holidays, 2 to 9 p.m. by calling 257-3226/2290.

### TRAVELING TO THE ORIENT?

Let me help you save \$100-\$200 on airfare. Save on mainland and interisland travel too. For excellent service and free delivery call:

B.C.I. TRAVEL

735-8414 Rick

8:30 am-7:30 pm Mon.-Fri. • Sat. 9-1

1A 867

### Ronald T. Nelson D.D.S.

### FAMILY DENTISTRY

970 N. Kalaheo Ave. Suite C #309  
PALI PALMS PLAZA  
KAILUA

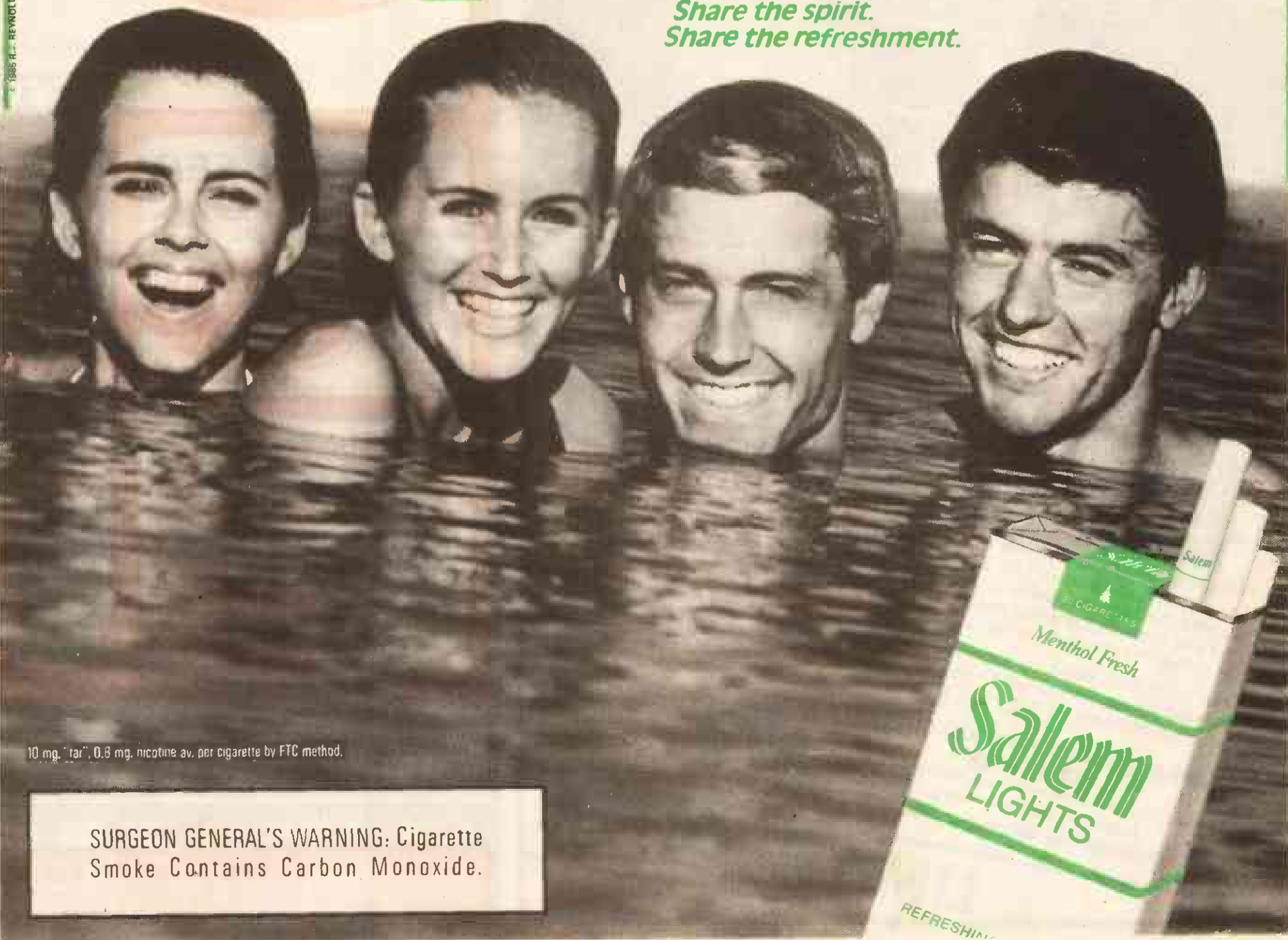
HRS:  
Days & Evenings  
By Appointment

254-5503

You've got what it takes.

# Salem Spirit

Share the spirit.  
Share the refreshment.



10 mg. "tar", 0.8 mg. nicotine av. per cigarette by FTC method.

SURGEON GENERAL'S WARNING: Cigarette  
Smoke Contains Carbon Monoxide.

# 6th Engineers build pride

Reserve Marines of the 6th Engineer Support Bn., 4th FSSG, from Portland, Ore., under the command of LtCol. John E. Payne, returned to Kaneohe Bay, May 10, for annual training duty.

The 6th Engineering is the headquarters element for several reserve engineer companies, including some located in Michigan, Arizona and Oregon.

The reservists are working on several projects during their two-week stay, under the direction of CWO-2 Charles E. Mason, who is the projects officer and leads the unit's Construction Platoon.

Prior to their arrival in Hawaii, the Portland Marines were at Camp Pendleton to undergo a Mobilization Organization Readiness Deployment Test, and spent three days

there working on MOS training for combat engineers, communicators, and heavy equipment operators.

Before leaving for Camp Pendleton a recall was held, which is a reporting procedure where the platoon sergeants contact each member of their platoon by phone and then report the results to their platoon commanders. The process is monitored by inspectors who rate the personnel availability of that unit.

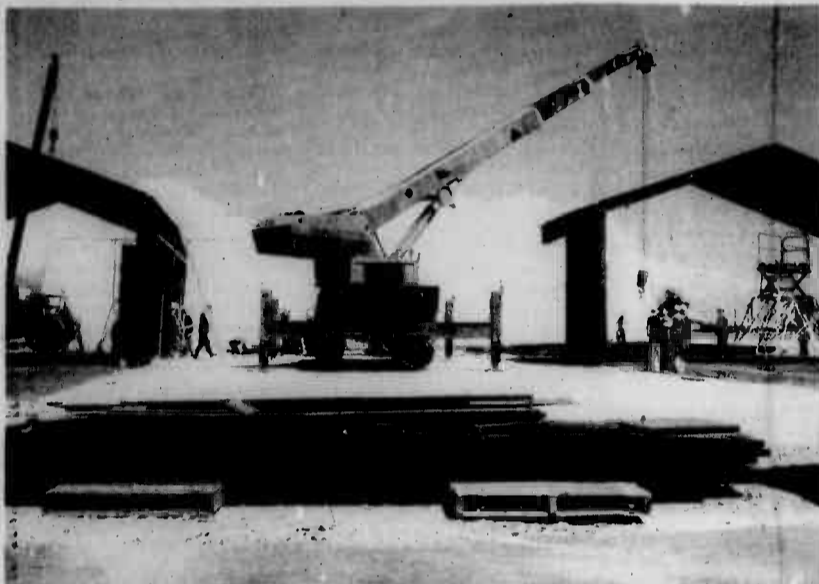
The Marines of 6th Engineers received an outstanding rating when 98.7 percent of the unit reported.

The battalion returned to Hawaii for the second time in the last three years. During their last visit the unit built an extension to the Windward Enlisted Club.

Story and Photos by SSGT. Richard Pratt USMCR



A marker at the Windward Enlisted Club was left by the 6th Engineers two years ago.



New storage sheds for MAG-24 are being erected here by Marine Reservists.

2nd Anniversary  
★ GRAND OPENING

# 2 for 1

THIS MEMBERSHIP INCLUDES FREE (U.Y.A.) SUNTAN SOLARIUM & FREE BABYSITTING.

Two years or two people for the price of one at the ultimate figure fitness and aerobic spa for women in Windward City Shopping Center.

★ Same as in April 1984! If you missed it then, now's your opportunity!



Mademoiselle Spa takes pride in offering the best to the ladies of Hawaii with personalized programs and the finest, the most luxurious exercise equipment and facilities available. So, ladies, if you wish to reduce pounds and inches, firm, tone, and join in the fun of dance and exercise aerobics while gaining fitness along the way, then Mademoiselle is the answer for you.

Mademoiselle features... personalized supervision • aerobics • the most modern exercise equipment • steam • whirlpool • and many other facilities! Call today for your appointment. 235-3511

HAWAII'S ONLY LUXURY SPA EXCLUSIVELY FOR WOMEN!

Hours: 8 a.m.-9 p.m. Mon-Fri., 9 a.m.-6 p.m. Sat., 12-4 p.m. Sun.  
Baby-sitting • Ample Free Parking  
Windward City Shopping Center

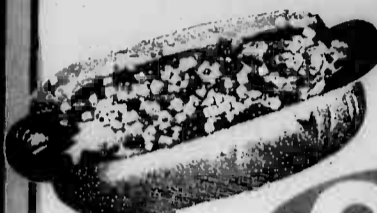
**LIMITED OFFER!**

# We Keep You Revvin'



OFFERS GOOD NOW THROUGH 5/31/86

## FRESH HOT DOGS



JUMBO OR SAUSAGE

FREE CHILI AND CHEESE

# 99¢

## 2-LITER SODA



- PEPSI
- DIET PEPSI
- PEPSI FREE
- DIET PEPSI FREE
- MOUNTAIN DEW
- 7-UP
- DIET 7-UP

# 99¢

EACH

## CARTON CIGARETTES

# 999

30¢ MORE FOR 100'S



WARNING: THE SURGEON GENERAL HAS DETERMINED THAT SMOKING IS DANGEROUS TO YOUR HEALTH.

\*EXCEPT WAIKIKI

## 12 PACK BEER

ALL POPULAR BRANDS



# 699

EACH



# 799

EACH

12 OZ. CANS

## LAYS & RUFFLES POTATO CHIPS

11 OZ.

YOUR CHOICE



# 179



# 799

EACH

12 OZ. CANS

One Keeps You Revvin' Like

ALPHA SUPERCROSS TICKETS AVAILABLE AT ALL STORES ON OAHU.

NOW ACCEPTING



OPEN 24 HOURS EVERY DAY



# Salutes



**EDITOR'S NOTE:** Salutes recognizes individuals for their achievements and exceptional performance and welcomes new arrivals to Hawaii.

The information is compiled by the Unit Information Officers in conjunction with Fleet Home Town News Releases submitted to the Joint Public Affairs Office.

### BSSG

#### Welcome Aboard

- I.Cpl. F.A. Barrett
- I.Cpl. J.W. Burger
- I.Cpl. B.E. Robinson
- I.Cpl. C.D. Perry
- I.Cpl. R.M. Greco
- I.Cpl. J.W. Lafayette
- I.Cpl. V.A. Armenio
- Cpl. B.E. Ravis
- Cpl. J.R. Hennion
- Cpl. A. Sloan
- Sgt. K. Powell
- Sgt. K.M. Smith
- Sgt. M.E. Franklin
- 2ndLt. D.L. Wood
- 2ndLt. L.D. Treu

#### Promotions

- PFC D.E. Schopf
- Sgt. D.W. McCord

NCO of Qtr.

Sergeant M.T. Thompson, Communications Support Company, was recently promoted to his present rank for becoming the 1st MAB's NCO of the Quarter. (USMC photo by Cpl. V.L. Tavoletti)

### Meritorious Promotions

- Sgt. M.P. Theriault
- Sgt. J.A. Palmer
- Sgt. I.A. Dunlap
- Sgt. A.M. Miranda
- Sgt. S.D. Sergeant

### Navy Achievement

- Maj. A.M. Crebbin

### Certificate of Commendation

- Sgt. G.L. Carlson

### Good Conduct Medals

- Cpl. M.J. Groves
- Cpl. M.J. Greco
- Sgt. D.J. Mancillas

### Certificate of Appreciation

- I.Cpl. B.J. Wessel
- I.Cpl. M.K. Yan
- I.Cpl. G.A. Tolbert
- Cpl. R.D. Culver
- Sgt. T.L. Powell

### Service School Graduates

- Cpl. S.M. Walker
- Sgt. S.M. Oldham

### St. Louis High Graduate

- Cpl. M. Halley

### NCO of the Month

- Cpl. D.M. Taylor

### 100 Mile Club

- LCpl. A.A. John

### 500 Mile Club

- Cpl. E.D. Mata

### HdqCo. 3d Mar.

- Welcome Aboard
- Sgt. T.W. Farr

### Meritorious Mast

- Cpl. M.A. Wittman

### Letter of Appreciation

- Sgt. J.L. Frame

### Letter of Recognition

- LCpl. R.E. Wayson II

### Good Conduct Medal

- Cpl. K.M. Schartz

### 3d Bn. 3d Mar.

- Welcome Aboard

- Pvt. M.A. Rivas
- Pvt. R.H. Wever Jr.
- PFC M.C. Abshire
- PFC T.W. Bankert
- PFC R.W. Daniels Jr.
- PFC B.K. Flowers
- PFC M.A. Glenn
- PFC L.D. Kimbrell Jr.
- PFC S.P. Martin
- I.Cpl. I.B. Kelly Jr.
- Cpl. M.J. Templeton
- Cpl. H.M. Watts
- Sgt. R.W. Armstrong
- Sgt. N.A. Legault

### 2ndLt. D.B. Liden

### Meritorious Mast

- Sgt. K.J. Stillings

### NCO of the Quarter

- Cpl. I.S. Nolan

### MACS-2

- Welcome Aboard

- I.Cpl. J.R. Oakley

### HMH-463

- Welcome Aboard

- I.Cpl. L. Tremaglio

- IstLt. T.P. Kearney

### Promotions

- Cpl. E. Carballo

### Meritorious Masts

- I.Cpl. K.A. Booth

- Cpl. S.A. Alloway

### NCO of the Quarter

- Sgt. G.A. Travis

### Letter of Appreciation

- Sgt. J.M. Flores

### Good Conduct Medals

- I.Cpl. J.A. Gaschen

- LCpl. E.P. Edwards

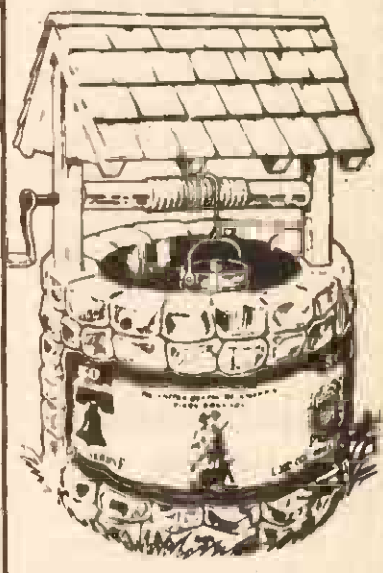
- Cpl. T.A. Myers

- Sgt. I.D. Wilkins

### Designation as CH-53 Crewchief

- LCpl. M.L. Kruse

# Wishing well.



Take stock in America. Buy U.S. Savings Bonds.

## P's and Q's of military construction

"Facilities foster pride, professionalism and productivity."

With these words, James P. Wade Jr., assistant Secretary of Defense for Acquisition and Logistics, outlined DoD's request to Congress for \$10.2 billion for the FY-87 military construction program.

One example cited by Wade illustrate his theme of excellent installations — the foundation of defense: the Air Force's Tactical Air Command. That command spent \$1 billion on facilities between 1978 and 1984 as part of an overall program to enhance readiness.

Major facility improvements similar to those made at the Tactical Air Command are now in progress in the Strategic Air Command and the Army's Training and Doctrine Command.

A good portion of the FY-87 budget is intended to improve living and work conditions. For Europe, the new budget provides \$147 million for 400 family housing units and more than \$160 million

for barracks and dining halls.

A total of \$68 million is targeted for community support needs such as child care centers, religious and education facilities, physical training areas and youth centers.

The Army is also asking for more than \$100 million for essential facilities modernization at various European bases, where, according to Wade, many of the facilities existed before World War II and are inadequate to meet the needs of today's weapon systems, such as the M-1 tank.

Wade also asked Congress to consider several legislative changes that would:

Increase minor construction authority to \$2 million. This would reduce time from concept to occupancy for smaller projects from the current 5-7 year period to 2-3 years. Since delay costs money, this should result in significant savings.

Modify the definition of minor construction. This would give a commander the flexibility to install new equipment bay doors to

accommodate the M-1 turret, for example, without being hamstrung as to whether to call the new doors construction or repair.

Finally, he said he hoped Congress would help DoD to adopt a policy of competition for excellence along with competition for price.

According to Wade, when competition is based solely on price, an "award to the low bidder" mentality is too pervasive. For military

construction, he hopes to involve America's best architects and engineers in providing quality planning, design and construction.

"Their task is to satisfy mission requirements, improve our people's performance and productivity, and incorporate innovative engineering to keep our construction costs down," Wade said.

Of course no matter how excellent a facility is in other

aspects, said Wade, it is no good if it can't survive an attack. To increase the survivability of ships, facilities, personnel and material and in the event of enemy attack, natural disaster of accident, DoD is also requesting funds for:

Implementing the strategic homeporting concept — the 600-ship Navy will require dispersed ports to minimize ship concentrations, and thus, vulnerability;

Relocating personnel from earthquake-prone, non-secure buildings in Naples, Italy;

Hardening medical and operational facilities against blast, small arms, splinter fragments and chemical, bacteriological and radiological warfare; and

Protecting against terrorist attack.

By Evelyn D. Harris  
American Forces Information Service

## \$34 for A Room and Car For Two

KONA HUKILAU from \$34	KAUAI SANDS from \$44
KONA SEASIDE \$44	MAUI HUKILAU \$49
HILO HUKILAU \$36	MAUI SEASIDE \$55

Includes standard room on or by ocean, a 1986 Budget auto compact, free mileage. Most rooms have color TV, refrigerator, ceiling fan, A/C, phone, pool, dining room, free ice, free parking. Hawaii's largest room and car operator.

### ROOMS ONLY from: \$28 single or double.

See your travel agent or call: Sand & Seaside Hukilau Hotels 922-1228

## PIZZA SPECIAL

- 1 Large cheese pizza
- Pitcher of soft drink
- 15 tokens

\$5.95

Additional toppings may be added at extra cost

Coupon must be redeemed at the time of purchase and may not be used with any other offer, coupon, or birthday package special. Only one (1) coupon per family. Offer good May 16-31, 1986.



98-1258 Kaahumanu 488-8487

### Birthday Party Special

REG. \$4.95 per person, NOW \$3.95 per person!!! Offer good Mon. thru Thurs. only. No coupon necessary. Call for more details. 488-8487.

# ON AMERICAN, THE SOUTH RISES AGAIN. AND AGAIN. AND AGAIN.

Now American takes off for more Southern cities than any other airline. We're flying 3 non-stops a day from Hawaii to Dallas/Fort Worth. We're serving hometowns like Atlanta, Huntsville and Jacksonville. And now, 7 more cities in the Carolinas: Charlotte, Fayetteville, Greensboro/High Point/Winston-Salem, Raleigh/Durham, Charleston, Columbia and Greenville/Spartanburg.

But no matter where you're headed on the Mainland, you can fly non-stop to any of our four gateway cities: Chicago, Dallas/Fort Worth, Los Angeles or San Francisco. Then connect in American's own terminal to any of over 85 destinations. Even London, Frankfurt, Paris, Mexico, Canada and the Caribbean.

NORFOLK

ATLANTA

NEW ORLEANS

DALLAS/FORT WORTH

SATO or American Airlines. 1-800-232-0980.

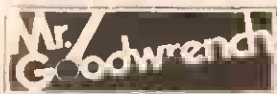
**SERVICE IN THE AMERICAN TRADITION.** From the time you make your reservation to the time you reach your destination, you'll enjoy our special services. Like selecting your seats and getting boarding passes even before you go to the airport. And the warmth and experience of over 200 employees in Hawaii, ready to show you what "something special in the air" is all about.

**American Airlines**  
Something special in the air.



To serve you better, Schuman Carriage Company Parts Department has a commitment to supply you with the largest, most complete inventory of genuine General Motors replacement parts and accessories. We always welcome you to stop by today or call any of our experienced and reliable salespeople who are dedicated to understanding your automotive parts needs.

Schuman Carriage Company LIMITED



CALL: 524-8571

SALUTES THE MILITARY

Arby's

**SPECIAL MEMORIAL DAY OFFER!**  
REGULAR ROAST BEEF SANDWICH  
Juicy, tender and lean... stacked high and mighty, delicious the Arby's way.

SAVE 70¢



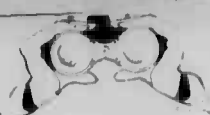
Arby's REGULAR ROAST BEEF SANDWICH  
Offer valid May 22 thru May 30  
Good Only at Arby's Pearisridge Phase I, Koko Marina Shopping Center, and Milliani Shopping Center. Not valid with any other offer. Tax Not Included.  
Limit 5 sandwiches per coupon

REG. 1.89  
SAVE 70¢ \$1.19

ROAST BEEF RESTAURANT

Pearisridge Center—Phase I, 2nd Level  
Koko Marina Shopping Center—Hawaii Kai  
Milliani Shopping Center

# At a glance



## Camp Smith Live Fire

Live firing will be conducted at the Camp H.M. Smith Training Facility, at Ewa Beach, on Sunday from 7 a.m. to 5 p.m. All safety limits and restricted areas will be enforced.

For more information, call 471-3548 or 471-8011, Monday through Friday, 7 a.m. to 5 p.m.

## Commissary hours

The Station Commissary store will be closed Saturday in observance of Memorial Day.

## Exchange laundry hours

The new hours for the Exchange Laundry are: Monday through Friday, 6 a.m. to 5 p.m.; Saturdays, 8:30 a.m. to 2:30 p.m.; and closed on Sundays.

## Recruiter assistants

Marines from North Dakota, Minnesota and western Wisconsin are needed to serve on temporary additional duty as recruiter assistants for Recruiting Station, Twin Cities, headquartered in Minneapolis.

Marines can spend up to 30 days at home while helping the local recruiting effort and will not count as annual leave.

For more information, call SSgt. Lyneb collect at (612) 349-3108.

## Military spouse day

The Pearl Harbor Family Service Center and the Naval Station Officers Club will host a "Military Spouse Day" luncheon tomorrow, from 11 a.m. to 1 p.m. All branches of the military and their spouses are invited to attend.

Lunch is \$6.50 per person, and flowers will be given to the spouses. The buffet luncheon will include Mahi Mahi, chicken, salad bar. Tickets can be purchased at the Officers Club.

## Memorial Day observance

Admiral James A. Lyons, Commander in Chief, U.S. Pacific Fleet, will be the guest speaker at a Memorial Day observance aboard the USS Arizona Memorial on Monday, starting at 7:59 a.m. Rear Admiral Henry F. Boyle, Commander Naval Base, Pearl Harbor, will toss a flower from the Armed Services wreath into the Arizona Memorial's open well in honor and remembrance of all those who have

sacrificed their lives for their country.

A Navy and Marine Corps color detail will raise the US flag above the memorial at 8 a.m., followed by the playing of the National Anthem by the Pacific Fleet Band, Captain Dean Cook, Command Chaplain of the Naval Station, will deliver the invocation.

## Exchange hrs.

All Exchange activities will be closed on Memorial Day, except the following: Activity

- Main Store, 10 a.m.-5 p.m.
- CFS #1, 8 a.m.-10 p.m.
- Self Service, 10 a.m.-9 p.m.
- Deli, 9:30 a.m.-5 p.m.
- Bowling Center Snack Bar, 11 a.m.-10 p.m.
- Car Rental Facility, 8 a.m.-6 p.m.
- Golf Pro Shop, 7 a.m.-5 p.m.
- Golf Course Snack Bar, 6 a.m.-6:30 p.m.
- Wiki Wiki Snack Bar, 8 a.m.-10 p.m.
- CFS #2, Manana, 8 a.m.-9 p.m.
- Baskin-Robbins, 6:30 a.m.-9 p.m.
- Rent-All Center, 10 a.m.-6 p.m.
- Service Station (gas, mdse only), 8 a.m.-9 p.m.
- Mobile canteens, 9 a.m.-9 p.m.

## Housing survey

Personnel who received an Onahu Consolidated Family Housing Office survey on living conditions in the civilian community are encouraged to complete and return the answer sheet as soon as possible. The answers to the questionnaire will be used to rate current conditions and plan for future needs.

## Liberty Statue coins

Commemorative coins for the Statue of Liberty's 100th birthday are available at the

Marine Corps Exchange here, and at Camp H.M. Smith and Marine Barracks Pearl Harbor exchanges.

The coins, minted as legal tender, are available in half-dollar and dollar denominations, and come in a velvet case or a gift box.

The limited edition coin prices are: 1986 Liberty half-dollar, \$7.50; 1986 Liberty silver dollar, \$24; and 1986 two-coin set, half and silver dollar, \$31.50.

Purchase of the coins will help the restoration of the statue as a portion of the profits will be donated to the Liberty Ellis Island Foundation.



Don Shula, Successful coach, Veteran traveler.

"The military wins big on this scoreboard."

## THE SCORE

On Northwest Orient Fares From Honolulu			
BOSTON (BAP30)	\$279	MILWAUKEE (BAP30)	\$259
CHICAGO (BAP30)	\$259	MPLS./ST. PAUL (BAP30)	\$239
CLEVELAND (BAP30)	\$279	NEW YORK CITY (BAP30)	\$279
DETROIT (BAP30)	\$259	PHILADELPHIA (BAP30)	\$279

Fares shown are each-way based on a round-trip purchase and apply for travel from June 7-December 19, 1986 on Tuesdays or Wednesdays only. Fares slightly higher on other days. One free stopover permitted in Los Angeles, San Diego, San Francisco or Seattle in each direction. Reservations must be made and tickets purchased at least 14 days prior to departure. Fares are subject to change.

Low fares like these - to 73 cities in 16 countries - are one reason why Northwest Orient serves more military people in the U.S., Europe and the Orient than any other airline. Some restrictions apply. For details, call your travel agent, on-base SATO, or Northwest Orient at (800) 225-2525.

People who know...go NORTHWEST ORIENT

**FOR THOSE WHO SEARCHED SO HARD...**

*HALLEYS OVER HAWAII*

**MARCH 1986 APRIL**

Red, White & Black emblem on a custom black cap

- \* If you saw the comet, celebrate.
- \* If not, show something for your efforts
- \* **ONLY \$6.25 plus \$1.25 P & H**
- \* Available only from: **MILCAP HAWAII**, P.O. BOX 1810 Pearl City, HI 96782 **455-8998**

**FROM THE "The Purple Foxes" TO THEIR LOVELY WIVES**

In sincere appreciation for your loyal support and devotion.

Hang in there... Be home soon!

**Neck Pain? Backache? Don't Suffer Needlessly!**

**Pacific Chiropractic**

TRAINED IN 5 RECOGNIZED TECHNIQUES INCLUDING "LOW FORCE"

COMPLETE PHYSICAL EXAM.

X-RAY FACILITIES

COMMON SYMPTOMS: BACK PAIN, HEADACHES, NECK PAIN, ARM & LEG PAIN, JOINT PAIN, MUSCLE SPASMS, NUMBNESS, PINCHED NERVES

SPECIALIZING IN: ON THE JOB INJURIES, AUTO ACCIDENTS, SPORTS INJURIES, CHRONIC & DIFFICULT CASES, GENERAL PRACTICE, FAMILY CARE PLAN, PERSONALIZED CARE

DR. JEANNE MICHAELS, R.N. DC.

261-0831

602 KAILUA RD. NO. 207, KAILUA (between Cornet & Hardware Hawaii-2nd floor rear) NO CHARGE FOR BRIEF SPINAL ANALYSIS

**MILITARY SPECIAL!** Only \$11 per person, with military ID. Cocktail show only. For reservations call 922-6408 or 923-0711. Tickets also available at all beer ticket outlets.

**PLAYBOY'S** Girls of Rock & Roll

The girls are gorgeous! The music is sensational! The comedy is hysterical! Don't miss the Playboy Girls of Rock & Roll Revue. Two shows nightly (except Sunday) 8:30 and 10:30 p.m.

**Outrigger MAIN SHOWROOM** 2335 Kalaniana'olaha Ave. 2nd floor from the International Market

For reservations call 922-6408 or 923-0711

**STARTS 9:00AM SHARP MONDAY, MAY 26TH**

**CARPET PRICES Hit The Floor!**

**STOREWIDE/WAREHOUSE SALE!**

**SAVE 20% TO 70% AT TWO GREAT LOCATIONS!**

**OPEN MONDAY MAY 26th 9a.m.-5p.m.**

**NEEDLE PUNCH OUTDOOR CARPET** Reg. Durable 8.99, Long Lasting 1,181 sq yds available **3.99** sq. yd.

**LEVEL LOOP PILE** Reg. Super Value 9.99, 3 popular colors 2,888 sq yds available **5.99** sq. yd.

**MULTICOLORED CUT-N-LOOP** Reg. 100% Nylon 12.99, Easy Maintenance 2,341 sq yds available **6.99** sq. yd.

**SOLID SAXONY PLUSH PILE** Reg. 100% Nylon 12.99, Lint Free 3,882 sq yds available **6.99** sq. yd.

**HOTEL LOBBY CARPET** Reg. 100% Nylon Plush 28.99, Ideal Familyroom Carpet, A Ray Of A Lifetime, Selling Below Manufacturers Cost (limited to Short Runs And Honolulu Stock Only) 588 sq yds available **7.49** sq. yd.

**THICK, LINT FREE PLUSH** Reg. Solid Decorator Shades 18.99, Ideal For Corridors and Lounges 8,541 sq yds available **8.99** sq. yd.

**POPULAR MULTITONE SCULPTURE** Reg. Good Elegant Colors 19.99, Super Buy Limited to Honolulu Stock 2,187 sq yds available **9.99** sq. yd.

**OUTDOOR GRASS** Reg. Non-directional 9.99, Action Bac 400 sq yds available **4.99** sq. yd.

**THICK, LUXURIOUS PLUSH** Reg. The Best Selling Carpet 21.99, In the Country, Ideal Colors 3,789 sq yds available **11.99** sq. yd.

**ELEGANT TONE ON TONE SAXONY** Reg. Super Value-Lint Free 21.99, Luxurious Tone on Tone Shades 1,758 sq yds available **12.99** sq. yd.

**UNIQUE SCULPTURE PILE** Reg. Fascinating Tone on Tone Shades 21.99, Textured Footprint Fine Style 3,182 sq yds available **12.99** sq. yd.

**THICK, LINT-FREE PLUSH PILE** Reg. 100% Nylon 25.99, Super Special Solid Decorator Shades limited to Honolulu Stock 2,882 sq yds available **12.99** sq. yd.

**GORGEOUS BERBER PILE** Reg. Fashionable Antron Pile 25.99, limited to Honolulu Stock 1,326 sq yds available **14.99** sq. yd.

**THICK SAXONY PLUSH** Reg. Most Durable Plush Pile 32.99, limited to Honolulu Stock Only 1,782 sq yds available **15.99** sq. yd.

**OUR BEST SAXONY PLUSH** Reg. Soft Dense Velvet Plush 33.99, Weat Dated - Lint Free 9,788 sq yds available **19.99** sq. yd.

**CARPET 3 ROOMS FULLY INSTALLED FOR ONLY \$399** Reg. 649.60 Based on 40 sq yds.

**CARPET YOUR LIVINGROOM & HALL FULLY INSTALLED FOR ONLY \$279** Reg. 454.72 Based on 28 sq. yds.

**ROOM-SIZE CARPETS YOUR CHOICE!** 1 OUTDOOR CARPET 2 100% NYLON LOOP PILE

Size	Reg.	Sale
12x9	\$108	\$48
12x12	\$144	\$64
12x15	\$180	\$79
12x18	\$216	\$96
12x24	\$288	\$128

Carpet only prices

**AMERICAN CARPET COMPANY**

Reg. Store Hours: Tues-Fri 9AM to 7PM, Saturday 9AM to 6PM, Sunday Closed. Sale ends May 31, 1986.

CONTR. LIC. #C-7137

AMERICAN CARPET COMPANY

MAIN STORE: 302 Sand Island Access Road, Ph. 847-4887

WINDWARD STORE: 45-582 Kamehameha Hwy. Ph. 235-7512



# Around the Corps

## AV-8As retirement

MCAS Cherry Point, N.C. — The last two AV-8As from VMA-542 were retired April 23 when Col. D.E. Savage, commanding officer, MAG-32, and Lt.Col. V.E. Taber, commanding officer, VMA-542, flew them to Davis-Monthan Air Force Base, Tucson, Ariz., for retirement. VMA-542 now flies AV-8B Harrier II aircraft.

command Col. James R. Davis, former commanding officer of H&SBn, MCRD, assumed command of Recruit Training Battalion. The former commanding officer, Col. Kenneth D. Jordan, will become the Deputy Director of the Personnel Management Division at Headquarters Marine Corps.

Hailston received the helm from Lt.Col. Sydney Wade Jr., who will be reassigned to MAG-31 headquarters. Hailston was previously assigned as executive officer of MAG-31.



## VMFA-312 Change of Command

MCAS, Beaufort, S.C. — Lt.Col. E.B. Hailston took command of VMFA-312, April 3 here.

The Few.  
The Proud.  
The Marines.

## Change of Command

MCRD San Diego, Calif. — During a May 2 change of

## FAMILY EYE EXAMINATION PLAN

Includes All Immediate Family Members

# \$39

### CHAMPUS Participant SOFT CONTACT LENSES

From \$79

### PRESCRIPTION GLASSES

From \$49



NEW! NOW AVAILABLE! TINTED Extended Wear & BIFOCAL Soft Contact Lenses Satisfaction Guaranteed

All Contact Lens Fees include Lenses, Care Kit Follow-up Care and 90 DAY TRIAL PERIOD.

COMPLETE PROFESSIONAL VISION SERVICES DEDICATED TO QUALITY AND SERVICE IN VISION CARE

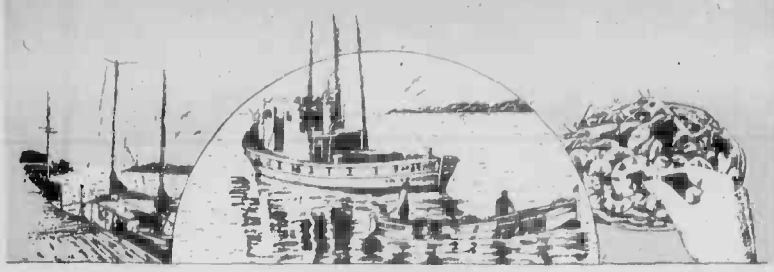
Dr. Charles Dean Optometrist

KAILUA 139 Hekili St. 261-9735



# WINDWARD ENLISTED CLUB

## PRESENTS



## FRIDAY NIGHT SEAFOOD BUFFET MAY 30, 5-9 pm

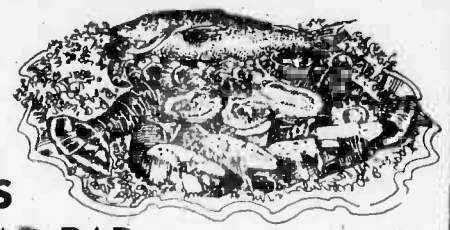
# ALL YOU CAN EAT

# \$ 9.95

EARLY RESERVATIONS ARE RECOMMENDED!

## FEATURING: CHEF EDDIE ACOBA'S SPECIALTIES:

- CRAB
- LOBSTER
- "PEEL YOUR OWN" SHRIMP
- MAHI-MAHI
- SCALLOPS
- ROAST BEEF
- RICE
- NEW POTATOES
- COMPLETE SALAD BAR



(EXTRA FOOD LINES FOR FASTER SERVICE!)

## LIVE ENTERTAINMENT! BEFORE & DURING DINNER DINNER MUSIC with LEE LAMBERT DANCE MUSIC with EXIT 21

**\$1<sup>00</sup> OFF** **FRIDAY NIGHT SEAFOOD BUFFET**  
**WINDWARD ENLISTED CLUB**  
**KMCAS \$1<sup>00</sup> OFF**  
 One Coupon Per Person

### CIVILIAN WORKERS WELCOME!

• HICKAM • PEARL HARBOR • SCHOFIELD • MARINE BARRACKS • ALPHA STATION • WHEELER

### EVERYONE'S WELCOME TO COME AND JOIN US! FOR MORE INFORMATION & RESERVATIONS

257-2657 OR 257-2873



MASTERCARD & VISA ACCEPTED FOR CONCERT TICKETS, DINNER & BEVERAGE PURCHASES

# WINDWARD ENLISTED CLUB KMCAS

AT YOUR MARINE CORPS EXCHANGE OFFER GOOD THROUGH JUNE 6, 1986



# 2 BUCKS BACK!

It's your choice. Buy any two rolls or discs of Kodak color film—or a combination—and get \$2 back from Kodak. Get two rolls of Kodak color film for 2 bucks less.

Offer good only from April 14—June 6, 1986. See your exchange for details.



Kodak... Serving the Military Worldwide

## \$2 MILITARY REBATE CERTIFICATE \$2

To get your \$2 rebate check, send: • This completed certificate • Two "Proof of Purchase USA" symbols from two rolls or discs (or any combination that equals at least 2) • Kodak color film • Original film sales receipt(s) dated between April 14 and June 6, 1986

Circle one rebate amount: 01 - Send me \$2 for two rolls 02 - Send me \$4 for four rolls Limit \$4 per address, group or organization. This offer does not include Kodak instant, black and white, or professional film. Also excluded is any Kodak color film that does not have a "Proof of Purchase USA" symbol. It cannot be used in combination with any other rebate offer for Kodak film. Facsimiles of certificate and proof of purchase not allowed. Symbols must represent your actual purchases. Requests must be received no later than June 30, 1986. Allow six to eight weeks for rebate check to arrive. Limit one request per envelope. Offer void where restricted, taxed or prohibited by law and limited to residents of the 50 United States. Dealers of Kodak products are excluded.

Mail all of the above to: Rebate for Kodak Color Film, P.O. Box 3974, Young America, MN 55394

NAME \_\_\_\_\_ ADDRESS \_\_\_\_\_ CITY \_\_\_\_\_ STATE \_\_\_\_\_

# BJ GRAND OPENING

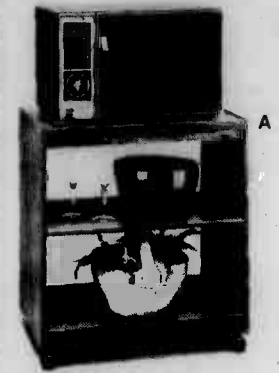
SUNDAY, MAY 25 • 11AM

## WINDWARD MALL

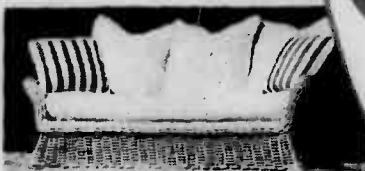
**WE'RE GROWING!**  
 And we're celebrating our new Windward Mall store with great savings for you in ALL of our stores. Choose the easy way to pay:  
**0% INTEREST FOR ONE FULL YEAR** (on approved credit)  
**OR \$1,500 INSTANT CREDIT** (on approved credit)  
**OR GET A 5% DISCOUNT WHEN YOU PAY CASH**  
 Be sure to register for our fantastic drawing at any of our BJ stores!

**OVER \$5,400 IN PRIZES!**

**1st PRIZE:**  
 5-piece Deerfield Dining Set plus China Cabinet.  
**2nd PRIZE:**  
 South Hampton Sofa and Loveseat  
**TWO 3rd PRIZES:**  
 First draw: Barcalounger® Commander Recliner.  
 Second draw: Simmons® Backcare Mattress and Boxspring set (Queen size)



**A. MICROWAVE CART**  
 Koa finish. Rolls on casters. 30" x 19 1/2" x 33". Reg. \$149.95 **\$99**



**B. ACAPULCO SOFA**  
 Our breezy rattan sofa covered in off-white 100% cotton. Reg. \$1239.95 **\$799**



**C. 3-PC. RATTAN DINING SET**  
 36" easy wipe oak finish table, 2 natural rattan chairs. Reg. \$519.90 **\$399**



**D. MAXIPEDIC CLASSIC III**  
 by Simmons® FROM **\$119** ea. pc.



**E. ROXANNE DAYBED**  
 Baked-on white finish on metal. Twin mattress and covers sold separately. Reg. \$499.95 **\$299**



**F. 5-PC. FONTAINE DINING SET**  
 Cherry oval table 38" x 56" extends to 74". 4 armless chairs. Reg. \$979 **\$599**

**G. NEW! CANTON BEDROOM GROUP**  
 3-pc set: triple dresser, mirror, full/queen headboard. Reg. \$1249.95 **\$899**  
 Nightstand Reg. \$289.95 **\$229**  
 5-drawer chest Reg. \$519.95 **\$399**

**H. MON CHER BEDROOM GROUP**  
 Double dresser Reg. \$289.95 **\$199**  
 Desk Reg. \$279.95 **\$199**  
 Matching pieces also at sale prices.



**I. SIMPLICITY MATTRESS**  
 Twin size. By Simmons® Reg. \$149 ea. **\$89** ea.

**J. IMPULSE L-SECTIONAL**  
 A great entertaining idea! Covered in beige fabric touched with eye-pleasing cream scribbles. Reg. \$1279.90 **\$899**

**K. EASTWIND SOFA**  
 Our basic sofa design adapts so easily to many moods. Covered in beige with salmon accents. Reg. \$619.95 **\$399**



**L. FERN TRUNK**  
 36" x 20" Reg. \$149 **\$69**



**M. 3-PC. WALL SYSTEM**  
 Koa finish. Two bookcases 30" x 11" x 72" each. Center unit 19 3/4" x 11" x 72". Reg. \$549.95 **\$399**



**N. HARLOW SOFA**  
 Ultra-comfy, extra-wide roll arms. Covered in restful, natural shade. Reg. \$829.95 **\$599**



**O. GRAND OPENING SECTIONAL**  
 Statolounger's® luxurious seating opens to a full bed. In taupe velvet. Reg. \$3419.80 **\$2350**



**P. WHITE WICKER WASTEBASKET**  
 Reg. \$9.95 **\$5**

**Q. CAMPAIGNER BEDROOM GROUP**  
 Triple dresser Reg. \$379.95 **\$249**  
 Matching pieces also at sale prices.



SALE GOOD THROUGH MAY 28, 1986

**BJ SHOWCASE at Furniture Square**  
 702 S. Beretania St. • PH: 531-2051

**BJ PEARLRIDGE • 98-107 Kam Hwy. • PH: 487-7211**

**Store Hours: Monday through Friday, 10AM-9PM; Saturday, 10AM-5PM; Sunday, 11AM-5PM**



**NEW BJ WINDWARD MALL!**  
 2nd FLOOR • PH: 235-7558

**Regular Store Hours:**  
 Monday Through Friday, 10AM-9PM;  
 Saturday 9:30AM-5:30PM; Sunday 10AM-5PM

**SPECIAL MEMORIAL DAY HOURS: 10AM-5PM**

Some items are not available for immediate delivery. All items are subject to prior sale.



A young boy takes the stick of a CH-46 from HIMM-165.



Marine units greet the visitors at Hickam AFB.



Marines from 4th Force Reconnaissance Co. in Honolulu demonstrate spierigging.

## Armed Forces Day celebration

Story and Photos by Sgt. Joe P. Jaseur

Servicemembers from the Army, Navy, Air Force, Coast Guard and Marine Corps joined together May 17 to celebrate Armed Forces Day held at Naval Base, Pearl Harbor and Hickam Air Force Base.

The two host bases opened their gates at 9 a.m. and invited the public to help celebrate their day of recognition.

All branches of the service displayed equipment and

gave demonstrations throughout the day, showing the public what each branch of the service specializes in to safeguard our country.

Marines from the Air Station and the Marine Reservists from the 4th Force Reconnaissance Co teamed-up to show the crowds at Pearl Harbor and Hickam their air, ground and sea prowess. They also showed static displays of 10 aircraft from MAG-24 units, weaponry from Battery 1/12 and amphibious assault vehicles from the 3d AAV Det.

See CELEBRATION/B-2



Spectators view a Marine jet from VMFA-212.



A young child watches



Two boys hang loose in an "amtrac" from the 3d Amphibious Assault Vehicle Detachment.



A C-5 Galaxy is the largest plane in the Air Force inventory.



Hospitalman Carl C. Clay, Weapons Co., 3/3, shows his medical equipment to inquisitive children.

CELEBRATION/from B-1



A Marine reservist from 4th Force Reconnaissance rappels from an HMM-165 CH-46.



A young boy sights down an M60 machine gun.



# Armed Forces Day



A Marine from MCAS Kaneohe Bay carries up a retired sailor.



A sailor aboard the USS Leftwich explains the procedure for anchoring a vessel.

Commentary

Women's Sports

Several times a year, we must put the spotlight on active duty women's sports and try to promote their programs. In the "Sports Shorts" section of the Hawaii Marine, we'll advertise our programs and state "superior women athletes interested in... should contact the Athletic Office or coach..."

Generally, we'll get some response. But it has been brought to our attention that we may be scaring off more participants than we are attracting by using the word "superior." Let's assume this may be happening, and try to put everything in its right perspective.

In December of each year, we have a "WM Sports Luncheon" and distribute sports calendars for the coming year. We also circulate copies through the units so each woman Marine and sailor here receives a copy. This schedule is always available at the Athletic Office in the Station Gym.

At the December meeting, we emphasize three things: we want all women, from those with little or no ability, to the superior athlete, to participate in our programs. Everyone must start somewhere; it is our responsibility to find outlets for all women who are sports-minded; and encourage all women who haven't been involved in sports to "try it, you might like it."

What we're really saying is that we're forming teams, and those with the most ability may go to regional competition; and those with superior ability may go as high as All-marine and/or armed forces competition.

In the meantime, the Air Station has agreements with the other services in Hawaii to enter women's tournaments and leagues in volleyball, basketball, softball, bowling, tennis, racquetball, golf and 10K runs. We simply must get more women involved in our programs as we're in danger of losing the opportunity to compete with the other services.

Right now, the emphasis is on softball, tennis and golf. Whether you've played sports before or not, if you have the desire to get involved we need you now!

Periodically, I must ask you: what are you going to be doing in your leisure time when you're 40, 50, 60 or even 70? The answer for many of you may be at the Station Gym.

Stop by and see us, or call 257-35503622 for more information.

By Jerry Price Sports Specialist, SSO

K-Bay Lanes Bowling Center has 24 lanes with Brunswick pinsetters. There is a pro shop, snack bar, video game room and vending machines. Call 257-3375 for information.

soothe "DRY EYE" with cool wet Lavoptik EYE WASH AT LONGS DRUG

Health Fair '86 pushes fitness



Frances Hartberger, Semper Fit instructor, uses a caliper to measure the relative body fat on Cpl. Joseph Seymour.



The parking lot at the Main Exchange came alive as bodybuilders, weightlifters, aerobic students and spectators gathered for Health Fair '86, in recognition of May as being Physical Fitness and Sports Month.

The fair, which featured information booths and several demonstrations, was held to promote awareness of health and fitness.

The event opened with an aerobics demonstration by the Semper Fit program, followed by a bench press competition and appearances by several Marine bodybuilders. The event ended with a demonstration of Japanese karate by several Marines and family members.

Exchange patrons were also able to browse among the many booths and pick up information on various aspects of health and fitness. One booth offered a computer that simulated peer pressure that can cause a person to fall into a drug or alcohol abuse problem; while another booth

from the Department of Health offered diet analysis and advice.

Corpsmen from the Branch Medical Clinic gave free blood pressure checks next to a booth that offered "skinfold" tests which measure body fat.

Marines from the Outdoor Recreation Equipment Center and Scuba Locker also manned a booth providing information on the various water sport classes offered here this summer.

In the bench press competition, several weightlifters took part by doing as many repetitions as possible of their own body weight. Sgt. David Allen, from 1st Radio Bn., won the event with 26 repetitions of 170 pounds. SSgt. Frankie Holmes, Co. A, 1/3, and 1.Cpl. Michael Schoppe, Co. A, 3d Recon. Bn., tied for second when each did 25 repetitions of 155 pounds. Both men tied again when they went for a tie breaker, so two trophies were awarded.



Cpl. Amos Ingram, MABS-24, poses during the bodybuilding demonstration at Health Fair '86.

DELTA GETS YOU THERE. OVER 100 MAJOR CITIES, THE EASY WAY.

Map of the United States showing Delta flight routes. Major cities listed include Seattle/Tacoma, Portland, Salt Lake City, Denver, Kansas City, St. Louis, Dallas/Ft. Worth, Houston, New Orleans, Atlanta, and many others. A curved arrow highlights the route from Honolulu to Dallas/Ft. Worth and then to Atlanta.

Fly Delta nonstop to Dallas/Ft. Worth, nonstop to Atlanta. Make fast connections for dozens of other cities.

Fly nonstop to Dallas/Ft. Worth any evening for arrival the next morning.

Our nonstop to Atlanta leaves every evening. You arrive in Atlanta the next morning.

Save with Delta's discount fares. Be sure to ask about our big discounts off regular Day Tourist Fares. Discount fare seats are limited and there are

special requirements; reserve early. We also have Military Fares that save you 25%. No restrictions—leave on any flight that has available space.

Check your on-base SATO (Scheduled Airline Ticket Office). See your professional Travel Agent. Or call Delta. Schedules are from Honolulu and subject to change without notice.



# An 'old fashioned' picnic

By Patricia Gail Sears

Recently, MGySgt. Charles James, a resident of Dias Place in Ulupau housing area, here, realized that his community was suffering from indifference. He decided to remedy the problem by arranging an old fashioned neighborhood picnic.

After making the necessary arrangements, he hand

delivered invitations to all of his neighbors.

He stopped at each door to introduce himself, and to encourage his neighbor to participate in the picnic.

The response was overwhelming. Nearly every neighbor accepted, and on April 26 more than 150 people gathered for the event.

Each family contributed a covered dish to the buffet. While they enjoyed eating everything, from taco salad to chocolate cake, they were entertained by live music provided by GySgt. Hank Northen.

"It was exciting," said James. "We played dizzyzzy."

and had an egg throwing contest and an egg hunt; but most importantly, we introduced ourselves to each other."

According to James, who works for the Marine Corps Exchange, his mission was accomplished: the picnic was a success.

James said arranging the gathering was hard work, but he was rewarded for his efforts. "I know my neighbors now," he says, "and they know me. We are a real community, not just a collection of strangers."

When asked if he would do it again, James replied, "of course: same time next year."



Children await the signal to start the egg hunt.

## Preschool registration

The Menehune Rainbow Preschool, located in bldg. 1391, will be holding registration for fall classes, June 18, from 8 a.m. to 1 p.m.

Class openings are available for children who will be 3 years old by Dec. 31, and for 4 year-olds. Registration packets will be available June 9 so they can be filled in prior to registering.

To register a youngster parents must provide a complete registration packet and the child's birth certificate and record of immunizations.

Registration fee is \$15 and must be paid at the time of registration. An equipment fee and the first month's

tuition are payable in September.

Openings are filled on a first-come, first-served basis, and a waiting list will be established for vacancies.

## Child Alert

The U.S. Postal Service and the National Association of Letter Carriers, have jointly agreed to cooperate with the National Center for Missing and Exploited Children.

Under this cooperative effort called "Child Alert," letter carriers will review pictures of missing children who may be identified by carriers while serving on their routes.

## Courts-Martial Report

Lance Corporal Roger L. Dowell, Co. A, 3d Marines, was convicted during a general court-martial 5 May, of 22 instances of wrongfully and unlawfully making and delivering checks to defraud and for procurement of U.S. currency. He was sentenced to be reduced to the pay-grade E-1, to forfeit \$300.00 pay per month for 12 months, to be confined for one year, and to be discharged from the service with a bad conduct discharge.

Corporal Eldon K. Barnes, Co. "A", AAV Det., was convicted during a special court-martial 6 May, of dereliction of duty; of willfully damaging government property; and of wrongfully appropriating government property. He was sentenced to be reduced to pay grade E-2, PFC and to be confined for a period of three months.

Lance Corporal Philip S. Dowdall, Co. "A", AAV Det., was convicted during a special court-martial 13 May, of dereliction of duty and wrongfully appropriating property of the U.S. Government. He was sentenced to be reduced to pay grade E-1, private; to forfeit \$300.00 per month for a period of three months; and to be confined for a period of three months.

A variety of classes and gear is available at the Station Marina. It is located in Bldg. 1698, call 257-2219 for information.

**ARRESTED FOR DRUNK DRIVING?**  
CALL: NOAH D. FIDDLER  
Attorney at Law  
Free Consultation  
545-7400  
820 MHIwai St.  
11K Bldg. Ste. #612  
261-3233  
408 A. F. Hialeah St.

**VIETNAM BOOTS**  
Proven durability... under the most rugged conditions

**LEATHER BIKE JACKETS**  
Many styles in stock  
From \$99  
Also BIKE GLOVES and CHAPS

**WOODLAND CAMOUFLAGE PANTS AND JACKETS**

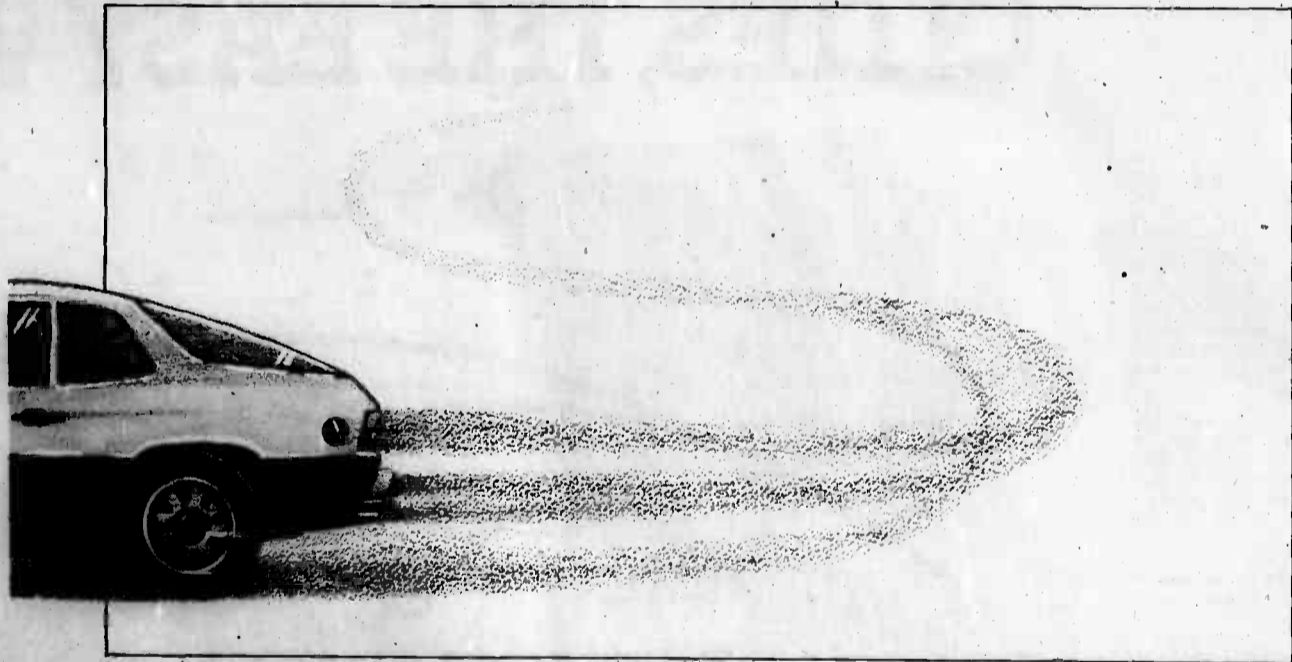
**22 OZ. COTTON CANVAS**  
Ruck sack features: two side pockets, a front zipper pocket, a padded lid, a two-inch waist, ball, adjustable heavy canvas shoulder straps and a hang loop.

**NINJA**  
WE CARRY NINJA SUITS, SHIRTS, HOODS & ACCESSORIES

**SUNBIRD TRADING COMPANY**  
671-2777  
MONDAY-SATURDAY 10-6  
SUNDAY 10-4

**It's so easy to make extra cash with classified**

# Auto loan payments should be like sports cars. Small and easy to handle.



Your sentiments exactly? Then you'll be very interested in First Hawaiian's new Limited Edition Auto Loan now available to qualified buyers.

The Limited Edition Auto Loan is specially designed to provide significantly lower monthly payments, up to 24% lower than conventional loans. Other standard features: down payment as low as 15% • your choice of terms up to 5 years • PayAnyDay® of the month • no prepayment penalty.

The low monthly payments are possible because the Limited Edition Auto Loan is structured like many home mortgage loans—your payments retire part of the loan. When the loan term ends, you have a choice: pay off the rest with a single final installment ("balloon") payment... or just refinance the balance.

So, if you can't handle large monthly payments, ask your dealer if you can qualify for the loan that's as contemporary as this year's model.

First Hawaiian's Limited Edition Auto Loan. It's the best money for the car.

Here's a comparison\* of how low your monthly payments could be for a \$10,000 Limited Edition Auto Loan versus a conventional loan:

Term	Conventional Loan	Limited Edition Loan	Difference in Monthly Payment
2 years	\$484.87 (24 monthly payments)	\$370.68 (23 monthly payments, plus one final installment of \$3,543.75)	\$114.19
3 years	\$346.65 (36 monthly payments)	\$274.18 (35 monthly payments, plus one final installment of \$3,543.75)	\$72.47
4 years	\$278.31 (48 monthly payments)	\$227.47 (47 monthly payments, plus one final installment of \$3,543.75)	\$50.84

\*Examples based on 15% Annual Percentage Rate and a down payment of 15%.

Ask your dealer about First Hawaiian's new Limited Edition Auto Loan.

**FIRST HAWAIIAN BANK**  
We say yes to you. Member FDIC

## Movie schedule



### Today and Tomorrow

**Eleri (PG)** Meryl Streep and Robert Redford. Drama. A story of love, survival and revenge, based on the real-life experiences of journalist Nicholas Cage. This drama centers on a man obsessed with finding and bringing to justice those responsible

for the torture and execution of his mother in 1948 during the Greek Civil War.

### Saturday and Sunday

**Black Moon Rising (R)** Tommy Lee Jones. Drama. A professional thief, working for the Attorney

General, hides a stolen computer in a hot jet car, the "Black Moon," which is stolen.

### Monday

**Surprise film classic. Tuesday and Wednesday**

**The Holocaust (G)**

Michael Caine and Victoria Tennant. Suspense. Holocaust is the son of a deceased Nazi SS general. His father and two other generals youted money to a Swiss account Caine and the eldest offspring of the other generals vow to pay out the \$1.8 billion to par... victimized by Hitler.

## What's cooking



### Today

**Lunch**  
Creamed mushrooms, shrimp curry, Cantonese spare ribs

**Dinner**  
Apple-glazed corned beef, grilled cheese sandwich

### Friday

**Breakfast**  
Baked sausage patties, pancakes

**Lunch**  
Hamburger pie, deep-fried cod fillets

**Dinner**  
Meat loaf, grilled ham steaks

### Saturday

**Brunch**  
Grilled minute steak, minced beef

### Dinner

Steinship round of beef, breaded pork slices

### Sunday

**Brunch**  
Grilled sausage patties, creamed beef

**Dinner**  
Grilled steak-to-order, Newport fried chicken

### Monday

**Breakfast**  
Roast beef hash, cinnamon French toast

**Lunch**  
Baked meat loaf, roast ham

**Dinner**  
Roast turkey, ginger pot roast

### Tuesday

**Breakfast**  
Baked sausage links, ass't fruit kolaches

**Lunch**  
Beef stew, buttered noodles, baked lasagna

**Dinner**  
Breaded pork chops, tamales, enchiladas

### Wednesday

**Breakfast**  
Corned beef hash, apple coffee cake

**Lunch**  
Pepper steak, BBQ dried pork

**Dinner**  
Breaded veal steaks, chicken Vega

## ENERGY CONSERVATION

AT YOUR FINGERTIPS

TURN ME OFF

SAVE ENERGY



## The Hale Koa Luau

Beginning in June—2 nights per week!

### An Evening of Vintage Hawaii

Only here will you feel like you're really there. Our spacious oceanfront garden lawn provides a lush setting and panoramic views reminiscent of the early days on Waikiki Beach. The evening begins with a fresh flower lei greeting, cocktails and a shimmering sunset, followed by authentic imu (cooking pit) and torchlight ceremonies, traditional Hawaiian dinner and a captivating South Seas show spanning centuries of music and dance. Tickets are \$21.95 for adults and \$12.95 for children under 12. Dinner, show, two complimentary cocktails or one exotic drink (soft drinks for children) and gratuity are included. Get yours now at the Hotel Activities Desk or at the Kaneohe MCAS Special Services Office.

Every Thursday evening on our oceanfront lawn  
Cocktails: 5 PM | Dinner: 6 PM

### HALE KOA HOTEL

At the Hale Koa Recreation Center, 2055 Kalia Road, Honolulu, HI 96815-1988. Tel: phone (809) 955-3555

## Ticket info

Admit One

**Aloha Supereros** — Aloha Stadium on May 31 at 7:30 p.m. Tickets are \$13.20 for adults and \$6.95 for children 6-12.

**Amy Grant** — Waikiki Shell on June 14 at 7:30 p.m. tickets are \$15.70 for reserved seats, and \$13.20 for lawn seating.

**Polo Matches** — Molekela — through August. Tickets are \$4.

**Hawaii Islanders Baseball** — At Aloha or Rainbow stadiums, seasonal book of 20 tickets is \$25, single tickets are \$1.25. Ask for a game schedule.

**Castle Park Special** — Action Pass gift certificates are \$10.95 for two people.

**Santitas** — Waikiki Shell on June

12 at 7:30 p.m. Reserved seats are \$17.20 and \$13.20 for grass seating. **Alvin Ailey** — NBC Concert Hall on June 10-13. Tickets are \$22.50, \$19.20, \$15.70 and \$13.20.

For more information, call Margaret at 254-3304 or stop by bldg. 219. Hours are from 9 a.m. to 3:30 p.m. Monday through Friday.

# PENDLETON RODEO

**Your family benefits, too.**

The experience of being a Marine goes beyond the regular workday. It includes being part of a community that has something in common. It means, when you transfer from one base to another, you'll probably run into friends at that new base. Plus, families can find all kinds of services available to them at Marine Corps bases throughout the world like recreational facilities for the kids, day-care centers for tots. And events happening on base that families can participate in.

There's also a helpful moving package designed for Marine Corps wives so they can take full advantage of all they have coming to them on a move.

When you look at the security, the medical, educational and retirement benefits available to families through the Marine Corps, there are some good reasons to stay.



You can count on the Corps.



# STAY MARINE.

- JOINT CAREER PLANNING OFFICER  
1st Lt Schopmeyer 257-3244
- JOINT CAREER PLANNING SNCOIC  
1ST MAB  
MSgt HYLE 257-2403
- JOINT CAREER PLANNING MCAS SNCOIC  
GySgt Pavlik 257-2403
- JOINT CAREER PLANNING ASNCOIC  
1ST MAB  
GySgt Sawyer 257-3244
- HOSVCCO 1ST MAB  
Sgt Gilbert 257-3670
- COMMSPTCO  
SSgt Sablan 257-3632
- HOCO 3D MAR  
SSgt Oldham 257-2993
- 1ST BN 3d Mar.  
SSgt Sechler 257-2167
- 2D BN 3D Mar  
SSgt Minler 257-3107
- 3DBN 3d Mar  
GySgt Martinez 257-3142
- 1STBN 12TH MAR  
SSgt Calder 257-3225
- H&MS-24  
MSgt Dukes 257-2230
- MACS-2  
SSgt Thomas 257-2995
- MARS-24  
SSgt Gonzalez 257-3693
- HMM-165  
Sgt Kerr 257-2788
- HMM-262  
SSgt Melcalf 257-2417
- HMM-265  
Sgt Hall 257-2788
- HMM-364  
Sgt Scott 257-2393
- HMM-463  
Sgt Myers 257-3201
- VMFA-212  
GySgt Balley 684-3156
- VMFA-232  
Sgt Turner 684-3267
- VMFA-235  
Sgt Fife 684-9181
- BSSG 1ST MAB  
SSgt Esplnosa 257-3127
- 1ST RadBn  
GySgt Hayden 257-2725
- HHS MCAS  
SSgt Carney 257-2912
- SOMS MCAS  
Sgt Hudson 257-3439
- FMFPAC  
GySgt Johnson 477-5090
- MARBKS PEARL HARBOR  
SSgt Hall 471-9516
- CAMP H M SMITH HI  
SSgt Jones 477-6865
- MARINE CORPS RESERVE 471-0202
- MARINE CORPS RECRUITING  
Honolulu 546-7560
- MARINE CORPS RECRUITING  
Kaneohe 247-8773

See your Career Planner

# Sports Shorts

## Frisbee Festival

Hundreds of brightly colored discs and footbags will be in the air at the



Honolulu Hacky Sack and Frisbee Festival Saturday at Kapiolani Park from noon until 5 p.m. Admission is free.

The festival is a fun, non-competitive, family-oriented event. There will be demonstrations by Frisbee champions and Hacky Sack wizards. In addition to exhibitions, instructors will be available to give free beginner, intermediate and advanced workshops.

Participants will have the opportunity to learn the basics of Hacky Sack and Frisbee play, as well as pick up tips on how to try some tricky moves of advanced play.

One of the highlights of the day is the "Big Throw" — an attempt to break the Guinness record for the most number of disc in the air at the same time. The current record is 449.

For more information, call Brad Evans at 449-5078.

## Youth soccer

Youth Summer Soccer registration for boys and girls 6-16 years old is being held on a first-come, first-served basis at Dependent Rec Center, building 1391, 1 to 4 p.m., Monday through

Friday. Last day of registration is tomorrow.

All applicants must be accompanied by a parent or a guardian. Military ID or a birth certificate is required. For more information call 254-2963.

## Scuba locker

You can get your basic open water certification or advanced certification in scuba diving at Special Services Scuba Locker. Speciality classes are also available.

Scuba equipment is also available at the Outdoor

Recreation Equipment Center.

For more information, call 257-2548.

## Golfers

Open Golfers with a 7 handicap and below: Seniors, 40 and above, with handicaps of 10 and below; and WMs with any handicap can sign up now with the Athletic Office for the HMAAC All-Marine qualifying tournament, June 19-22, at the Kaneohe Klipper Course. Practice rounds are scheduled at 7 a.m., on June 1, 8 and 15.

## Bowling

An organizational meeting for the Summer Bowling Program will be held at the Station Theater on Wednesday at noon. Units are encouraged to enter as many teams as possible. Season starts June 4.

## Tennis

An open Tennis Tournament will be held June 7 and 8 at the lower courts. Matches will start at 9 a.m., on June 7. All-Marine hopefuls are encouraged to participate. Register with Athletic Office as soon as possible.

# Island Happenings

## Creative Theater classes

The Pearl Harbor Youth Center will be holding creative theater classes for children ages 4-13, Saturdays and weekday afternoons in Kailua, Pearl Ridge, Newtown, Mililani and Waialae. The classes will teach communication and performing art skills using games, puppets and video equipment.

Two summer programs are

featured. Creative Expressions for children 4-7, and Video Production and Performing Skills for children 7-13.

For more information, call 536-0390.

## Job skills for teens

The Pearl Harbor Family Service Center will hold a workshop on "Job Skills for Teens" from 7:45 a.m. to 12:15 p.m., in building 193, on June 13.

Topics covered will include

job hunting, interviewing, goal setting, what employers look for, scholarships for college, and appearance.

For reservations call 474-2220/4222.

## Exercise

"Young at Heart" exercise fitness classes for persons over 40 are offered at Castle Medical Center's Health Education Center, Monday through Thursday at 5 p.m. The 60-minute classes are

aimed at persons interested in exercising but are not ready for, or are not able to do, strenuous aerobic exercise. The cost of the classes is \$35 for 20 sessions.

For additional information, call 263-5286 or 235-8737.

## Information Fair

"Planning for Your Later Years," a free information fair, will be held May 31, from

8:30 a.m. to 12:30 p.m., at the Lanakila Multi-Purpose Senior Center.

A variety of agencies will present information on residential options, family caregiving, adult day care, living wills, health insurance and aging services available in Honolulu. The program is sponsored by Protection and Advocacy Agency of Hawaii, Executive Office on Aging and Lanakila Multi-Purpose Senior Center.

## Career life planning

The Pearl Harbor Family Service Center will hold a presentation on "Career-Life Planning" June 5, from 7 to 9 p.m., in building 193.

Topics covered will include career-life exploration, planning strategy, self-awareness, the world of work, playful decision-making, and the career-life rainbow.

To register call 474-2220/4222.

# Religious services

**MCAS Kaneohe Bay**  
257-3553/3508  
Weekdays

11:45 a.m. — Catholic Mass

**Saturdays**

7 p.m. — Catholic Confession

Reconciliation

**Sunday**

7:30 a.m. — Catholic Mass

8:30 a.m. — Protestant Liturgical Communion



9:30 a.m. — Protestant Sunday School

9:30 a.m. — Catholic Mass

10:45 a.m. — Catholic CCD Classes

11 a.m. — Protestant Worship  
1 p.m. — Samoan Congregation  
6 p.m. — Protestant Gospel Worship service

The Station Chapel is located in

the right rear corner of the Marine Corps Exchange, building 1090. Sunday School and CCD are held in the pre-school area, building 1391.

**Camp H.M. Smith**  
477-5098

**Sunday**

8 a.m. — Catholic Mass  
9:30 a.m. — Protestant Worship

9:30 a.m. — Protestant Sunday School

**Monday**

11:30 a.m. — Bible Study

**Wednesday**

6:45 — Prayer breakfast  
7 p.m. — Choir rehearsal

**Friday**  
11:30 a.m. — Catholic Mass

**Aloha Jewish Chapel**  
Pearl Harbor  
471-0050

8 p.m. — Shabat

**Saturday**

9:30 a.m. — Shabat and Torah Study

**ADOPTIONS  
DIVORCE  
DRUNK DRIVING**

Reasonable rates

**Marylyn K. Hata**

Attorney at Law

Ph. 521-4781

**Breakfast, Lunch  
or Dinner  
At**

# Rob Roy's

Kailua's  
Traditional Family  
Restaurant  
26 Hoolai St.  
262-6992

**SAN DIEGO  
BOUND?**

**FREE**

Relocation Brochure

**JOAN KIDDER**

Multi-Million Dollar Producer

**Corky McMillin Realty**

Call Toll Free  
1-800-725-8911 ext. 3061

## SPRING FRAME SPECIAL

**20% OFF** On Custom Framing  
**30% OFF** On Ready-Made Frames

235-6408

**FRAMES HAWAII NEI**

46-144 Kahuhipa St., Kaneohe

(Across From Kaneohe Nissan) Offer Good Thru June 30, 1986

## MILITARY PERSONNEL...

Visit neighbor islands at special hotel rates

from **\$31** for 2

**KAMAAINA OR  
MILITARY RATES**

(All rates are for double occupancy)

Standard rooms ..... from \$31-40  
Superior rooms ..... from \$35-44  
Deluxe rooms ..... from \$39-49



**KONA LAGOON**  
Kona at Keauhou/P/m \$31



**HILO HAWAIIAN**  
Hilo/P/m \$35



**MAUI BEACH**  
Kahului, Maui/P/m \$40



**MAUI PALMS**  
Kahului, Maui/P/m \$31



**KAUAI RESORT**  
Waialua, Kauai/P/m \$39



**QUEEN KAPIOLANI**  
Waikiki/P/m \$38



**WAIKIKI HANA**  
Waikiki/P/m \$31

For reservations and information,  
see your travel agent or call  
**Hawaiian  
Pacific Resorts**  
531-5235

From neighbor islands, toll-free  
1-800-272-5275

Executive offices: 1150 S. King St.,  
Honolulu, HI 96814

Need a car? Ask us about our "Rent & Wash" a super value hotel and car package with cars provided by DOLLAR RENT A CAR. Reservations may also be made through ALMA AIRLINE, phone 436-1111.

Kahului, HI 96706

# Exchange Special

from **KODAK**  
Processing  
Labs



## Get in on the double! 2 prints for the price of 1.

Just bring in any size color film to your Exchange Self-Service Photofinishing Counter and we'll give you a second set of those special pictures free! What a bonus... quality developing and printing by Kodak, plus two sets of prints. All for our regular low price. This is a limited time offer. So bring in your film today. See full details at the Exchange. Applies only to processing by KODAK Processing Labs.

### SALE DATES: 26 May to 16 June

**Kodak...Serving the Military Worldwide**

\*Available only at time of processing. One finish surface only.

This advertisement was neither paid for, nor sponsored, in whole or in part, by the Exchange Service.



© Eastman Kodak Company 1986

A10-252C









**WE ARE OVERSTOCKED WITH USED CARS WE WILL NOT REFUSE ANY SERIOUS OFFER STOP BY TODAY AND MAKE OFFER**

**13" COLOR TV or MICROWAVE WITH EVERY PURCHASE**

- '79 BUICK REGAL [AEV031] Auto. Air, AM Radio \$3995
- '79 DODGE ST REGIS 4 DR. [AXR223] Auto. Air, AM Radio \$2395
- '77 CHEV MALIBU 4 DR. [ARF254] Auto. Air, AM Radio \$1995
- '82 FORD FUTURA 2 DR. [BBW738] Auto. Air, AM Radio \$3395
- '80 FORD LTD 4 DR. S/W [BAR231] Auto. Air, AM Radio \$2995
- '79 CHEV IMPALA 4 DR. [AJB273] Auto. Air, AM Radio \$2495
- '85 FORD TEMPO GL 4 DR. [BYG737] Auto. P/S, Air, AM/FM Cass \$6795
- '80 OLDS OMEGA 4 DR. [BER031] Auto. Air, AM Radio \$2995
- '82 FORD EXP 2 DR. [BFP943] 4 spd. AM Radio \$1795
- '84 CHEV CAVALIER 4 DR. [MJW572] Auto. Air, AM Radio \$5995
- '78 CADILLAC ELDORADO [AXR427] Auto. Air, AM/FM Cass, Leather, P/D/Lock \$3295
- '81 VOLKS RABBIT 2 DR. [AYU674] 4 spd. AM Radio \$6995
- '85 CHEV SPRINT 2 DR. [BWG586] 5 spd. AM Radio \$4695
- '84 CHEV CELEBRITY S/W [BUP072] Auto. Air, AM Radio, 6 cyl \$6995
- '81 BUICK LESABRE 4 DR. S/W [BFB581] Auto. Air, AM/FM Cass \$5595
- '82 DATSUN 280ZX [BXV632] 5 spd. Air, AM/FM Cass \$7395
- '80 PONTIAC BONNEVILLE S/W [BTP514] Auto. Air, AM/FM Cass \$2495
- '83 FORD FUTURA 4 DR. [BTS271] Auto. AM Radio \$3995
- '82 PONTIAC J2000 4 DR. S/W [ATN113] Auto. Air, AM/FM Cass \$3995
- '82 FORD ESCORT [BDX294] 4 spd. AM Radio \$3195
- '82 DATSUN 210 2 DR. [MPK171] 4 spd. AM Radio \$3395
- '81 TOYOTA TERCEL 2 DR. [BEA934] 5 spd. AM Radio \$3295
- '79 DATSUN 280ZX 2+2 [AAS443] Auto. Air, AM/FM Cass, P/D/Lock \$5795
- '79 DATSUN 510 S/W [BJA758] Auto. AM/FM \$1695
- '84 CHEV CHEVETTE 4 DR. [BYT323] 4 spd. Air, AM Radio \$3995
- '83 DODGE SHELBY 2 DR. [EYZ321] 5 spd. AM/FM Cass, P/S \$3395
- '85 PLY RELIANT LE 2 DR. [CDR528] Auto. Cruise, Air, AM/FM Cass, P/W \$6895
- '84 FORD TEMPO GL [BXU005] Auto. Air, AM Radio \$4995
- '78 TOYOTA LANDCRUISER [BAS481] 4 spd. AM Radio \$3995
- '78 TOYOTA CELICA 2 DR. [BFY156] Auto. Air, AM Radio \$3695

100% Financing Available Subject to prior sale MANY MORE CARS TO CHOOSE FROM

**NISSAN**  
**Windward**  
 46-151 Kahupia St. In Kaneohe  
 Call 235-6433

**MEMORIAL DAY PARADE OF SAVINGS**

- '76 MAZDA WGN #ARN647 \$599
- '76 TOYOTA COROLLA #ACJ967 \$799
- '79 CAPRI 4 spd. #HAW579 \$999
- '79 VW RABBIT Auto. #ADE811 \$1099
- '81 CHEVETTE 4 dr. Auto #BFX694 \$1599
- '80 VW CONVERTIBLE #ABV879 \$5499

**THIS WEEKS SPECIAL**  
 '84 TOYOTA 4x4 WGN Air, p.s., stereo, & MORE #BWP514 **\$6995**

**WINDWARD VOLKS 262-6576**

MGB	TOYOTA
'80 MGB, 35,000 mi. 1-owner A-1 cond \$4995/best offer. 22,000 mi. like new. \$3995. Call 247-2593 leave message.	'74 CELICA, 2-tone, spoilers, Weber, std., extra parts. \$2100. Leaving 239-6693
NISSAN	VOLKSWAGEN
'82 NISSAN Stanza, a/c, new tires & cassette, excl. cond. \$3995. Ph. 239-7657	'67 VW, good running cond. \$1200 or offer. Call 262-6494
'83 SENTRA 5 spd., air, low mi. AM-FM stereo, 22,000 mi., like new. \$3995. Call 247-2593 leave message.	'69 ANGLE Chop Bug, new paint, alloys. \$8000/offer. Ph. 732-7865 before 7 p.m. Kailani. Leave message.
OLDSMOBILE	'70 BUG, body good cond. 1776cc, 48's. Rebuilt heads & trans. Offer. 247-6700 1/2
'77 DELTA 88, 4 dr., luxury model, only \$1000. DWH 477-5052, AWH 263-4301	'74 VW SUPER Beetle, Excl. Cond. \$1650. Call 254-3020
PLYMOUTH	'75 VW BUG, Newly rebuilt engine, New battery, clean \$2000/offer. 235-5799
'69 PLYMOUTH Valiant, \$600. Good Condition. Ph. 261-4831	'75 SCIROCCO, 55,000 mi. Asking \$2500. Excl. cond. Must sell. 922-9497
PONTIAC	'77 SUPER Beetle, good condition, sun roof \$2000/offer. Call 621-9032
'80 PLYMOUTH Volare \$1500/best offer. 254-4679	'77 VW Rabbit, 4 spd., 4 dr., runs well, clean \$850. Ph. 247-6707 or 247-4653
TRIUMPH	'79 VAN, 7 passenger, 31,000 mi., 1 driver. Must see \$5200/offer. 239-7073.
'79 TRANS AM, 1-top, many extras. \$3200. Ph. 247-8110	'79 RABBIT, 4-dr., 4-speaker cass., luggage rack. 1st \$1200 takes it Ph 395-2771
'80 SUBARU 2 dr 5 speed, runs good Asking \$1900. Call 261-9887 anytime	'80 RABBIT Diesel, Original owner, Tuffkote \$1500/offer. Call 621-9032
'86 FIERO SE, must sell, regularly priced at \$16,000, asking for \$11,500. Call 655-0533 Ask for Sgt Perez	'80 SCIROCCO, excl. interior, AM/FM cass. Best Offer Call 247-1451 eves
	'85 VANAGON GL Deluxe \$13,000. Ph 239-7702

# MIKE SALTA GOOD NEWS REPORT



PRICES ON ALL PONTIAC FIERO CDUPES HAVE NOW BEEN REDUCED BY '650

**\$7995** IS NOW THE CASH PRICE FOR A NEW '86 PONTIAC FIERO ORDER NOW!

PONTIAC MOTOR DIVISION ANNOUNCES ALL NEW PONTIACS ARE NOW ELIGIBLE FOR NEW, LOW 7.9 ANNUAL PERCENTAGE RATE FINANCING, SOME MODELS FOR AS LOW AS 5.9%

**\$3695** IS NOW THE CASH PRICE FOR A NEW '86 PONTIAC GRAND AM #660169

GMAC ANNOUNCES NOW PONTIACS CAN NOW BE LEASED WITH ANNUAL PERCENTAGE RATE FINANCING LOWER THAN EVER!

**\$6995** IS NOW THE CASH PRICE FOR A NEW '86 ISUZU I-MARK #11828

THROUGH THE PONTIAC MOTOR DIVISION, COLLEGE GRADUATES CAN NOW PURCHASE NEW CARS WITH LESS THAN 5% DOWN EVEN WITHOUT PREVIOUS CREDIT.

**\$8995** IS NOW THE CASH PRICE FOR A NEW '86 PONTIAC FIREBIRD ORDER NOW!

ISUZU ANNOUNCES THE INTRODUCTION OF ITS NEW 4-DOOR TROOPER II FEATURING GREATER PASSENGER CONVENIENCE AND SAFETY.

**\$9995** IS NOW THE CASH PRICE FOR A NEW '86 ISUZU IMPULSE #05029

VEHICLES ARE SUBJECT TO PRIOR SALE. PRICES ARE PLUS TAX, LICENSE AND DOCUMENTARY FEE, AND VALID THRU 5-31-86



**MIKE SALTA PONTIAC-ISUZU**  
 2945 N. NIMITZ HIGHWAY  
 Ph. 836-2441

**OVER 400 CARS & TRUCKS**

**INVENTORY CLEARANCE 5.9%\*** Annual Percentage Rate

the functional CABARELLOS

1/2 ton GMC PICKUP

the stylish CUTLASS CIERAS (4 cylinder)

on our most popular CUTLASS SUPREMES

**NO REASONABLE OFFER REFUSED**

\*on approved credit for limited time on select models only

Westridge Showroom  
 98-150 Kaonohi St  
 487-5526  
 Mon-Fri 10 a.m.-8 p.m.  
 Sat 9 a.m.-6 p.m.  
 Sun 10 a.m.-6 p.m.

**PACIFIC OLDSMOBILE & GMC**  
 Subject to prior sale. Price + tax & lic.