

# Hawaii Marine

Vol. 15, No. 26

MCAS Kaneohe Bay, Hawaii

July 3, 1986

## FMFPac Band receives MUC award

By Cpl. Stephen Frank

The Fleet Marine Force Pacific Band was awarded a Meritorious Unit Commendation by the Secretary of the Navy for meritorious service in support of military operations from June 30, 1982, to September 30, 1985.

The Band, under the direction of Capt. William M. Clemons, is responsible for providing all ceremonial support for changes of command, posting and relieving of sergeants major, parades, Marine Corps Birthday balls; and various community events on both the Leeward and Windward sides of Oahu, such as the Kamehameha Day Parade, Aloha Week Parade, Armed Forces week activities, and the Annual Combined Band Concert at the Neal Blaisdell Concert Hall. The 45-member band also travels inter-island.

The Band was cited in part for "bringing distinguished

credit upon the United States of America and the United States Marine Corps through flawless public representation of superior military professionalism and musical precision."

"The Band was personally selected by the Commander in Chief, U.S. Pacific Command, as the military musical unit to perform for all ceremonies and honors for visiting Heads of State and other senior civilian and military dignitaries."

The citation went on to read "the sterling performances by the FMFPac Band during its frequent participation in parades and other community relations events served to enhance the Marine Corps' image in the civilian community and promoted understanding in high visibility commitments, and an unblemished record earned the FMFPac Band a reputation as the most distinguished and highly regarded military musical unit in the region."



USMC photo

## Alcohol to cost more in clubs, exchange

By Cpl. Stephen Frank

Prices for beer, wine and liquor will be going up at military clubs and exchanges in Hawaii as the result of the new tax legislation recently passed by the Hawaii State Senate.

A price hike occurred earlier this year after Federal Legislation required military installations to buy all alcoholic beverages from distributors in the state in which the base is located.

The result of that Federal Legislation, according to Maj. Dan Kessler, director of

Command Clubs Management Systems here, was an increase to the cost of alcoholic beverages to the clubs and the Package Store by as much as 70 percent.

The new legislation, Hawaii State Bill No. 2038, will change the alcohol tax structure from a flat rate, or Ad Valorem tax — where a tax is paid by the percentage of cost — to a "by the gallon" rate. The bill will also bring to an end the traditional tax exemption that military alcohol purchasers enjoyed.

"In the past," said Maj. Kessler, "products provided

to the military were exempt from the state tax. Now, the distributors are being taxed and are passing that increase on to us, the consumer. I'm receiving the new prices now," Kessler added, "and it looks like we'll be seeing wholesale prices about seven percent higher than current retail prices."

At that point, according to Kessler, it becomes difficult to make enough money to pay for operations and still provide the required support for Morale, Welfare and Recreation activities.

"We're going to try to keep

prices at, or below prices in the local stores off-base," Kessler said. "But it will be difficult to match any special promotions that might be offered. What I hope the customers here understand, is that by supporting the Club Systems, they will be supporting MWR since any profits go to support MWR Marine Corps-wide, and allows us to maintain our facilities."

Kessler also pointed out that there might be some relief in sight. The Federal Legislation that required military installations to buy

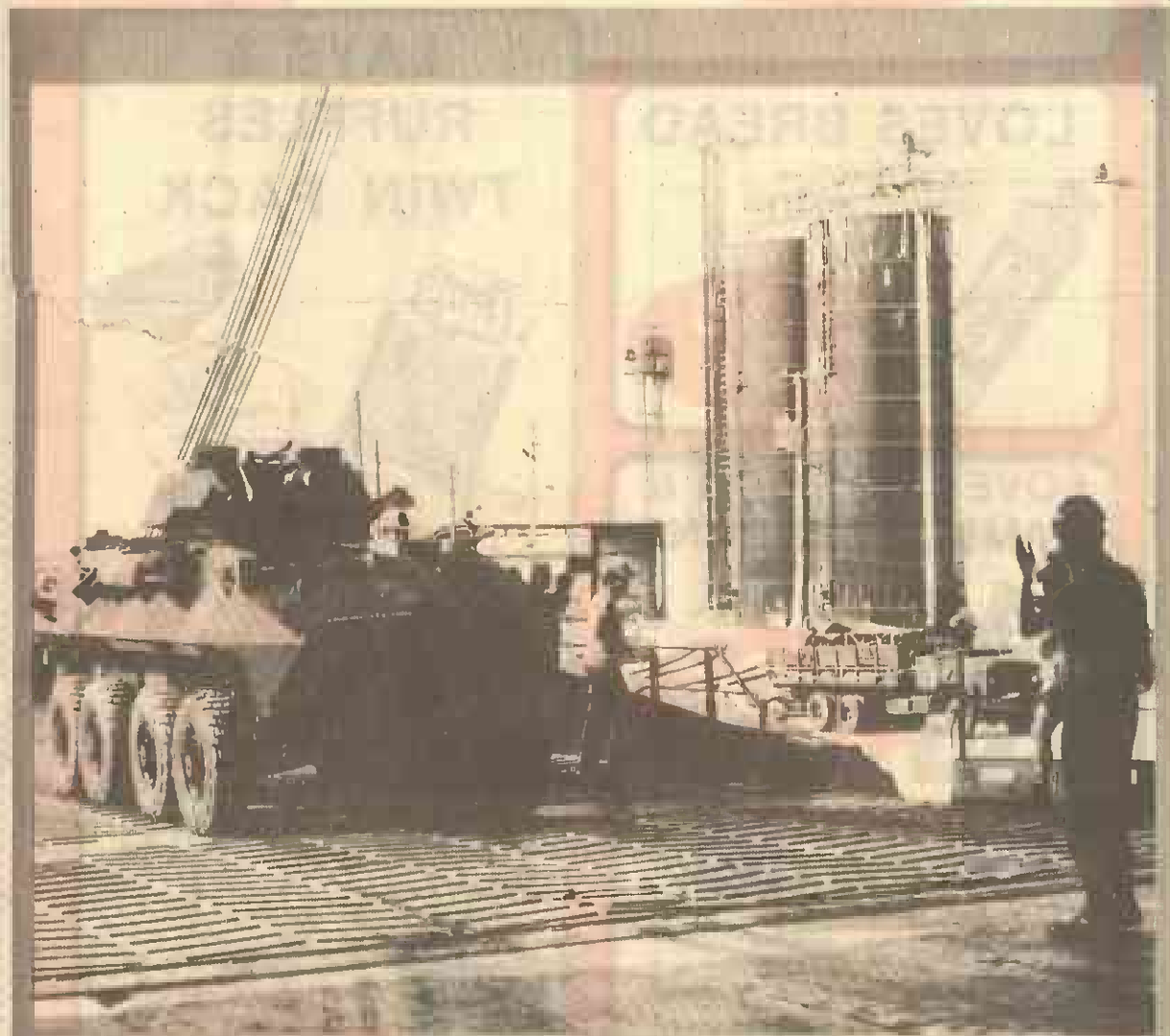
alcohol locally was a "rider bill" attached to the 1986 Defense Appropriation Bill. That bill will end with the fiscal year this October, and with it the rider.

"This was a political issue that was defeated twice by the U.S. Senate in 1985, but passed the House of Representatives once it was attached to the Defense Bill," Kessler said. "There was a lot of opposition to it, so there appears to be a better than 50-50 chance that this (local alcohol purchase) bill won't make it back into law next year."

If the alcohol law doesn't make a comeback next year, it appears that military purchasers will once again be able to buy alcohol from the mainland, and have it delivered here through "drop shipments" eliminating the need to buy from local distributors and paying the gallonage tax.

Until this issue is resolved later this year, military customers can look forward to pay even more for their local alcohol purchases.

See Alcohol/B-4



Cpl. Thomas L. Russell photo

### MPS-3 preparation

A Light Armored Vehicle-25 is guided up the rear ramp of the Motor Vessel 1stLt. Baldomero Lopez during loadout operations for Maritime Prepositioning Squadron-3 in Panama City, Fla. For more turn to page A-3.

## Inside

Salutes	A-10
Special Services	A-10
Ticket info	A-10
At a glance	A-8
Island	
Happenings	A-7
Movies	B-7
What's cooking	B-7
Sports Shorts	B-6
Religious Services	B-6
YMCA events	B-5



W.O. Eric Carlson photo

### They won!

Marines of First Squad, First Platoon, Company K, 3/3 took first place in the 3d Marine Division Rifle Squad Competition held on Okinawa, June 22-29. Above, the Marines live-fire on the SARTS Range here before going to Okinawa. A squad from 2/6 took second place in the competition, while a squad from the 1st MAB's own 2/3 took third place. The Marines from 2/3 are on a six-month Unit Deployment to the Western Pacific and will return here in September. The winning 3/3 squad will return here shortly. Unlike past years, division-level is the highest-level rifle squad competition in the Corps.

*'Have a safe and happy 4th of July'*

# 4th of July messages



From the President

The Independence Day we celebrate this year is special. This July 4th, in New York Harbor, we will rededicate a refurbished Statue of Liberty — that grand and glorious symbol of liberty and hope — which for the last hundred years has greeted millions of immigrants. She has welcomed them to a new land and a new life, where the darkness of privation and oppression gave way to the sunlight of opportunity and liberty — the freedom to speak and write and worship and achieve.

As we celebrate this two hundred and tenth anniversary of our Founding Fathers' Declaration of Independence, we are reminded once again that it is the gallant men and women of our Armed Forces who have maintained and sustained the liberty we prize, a liberty that generations of patriots have won for us with their courage and sacrifices. Because of your dedication and commitment to defend America against all its enemies, we still enjoy those precious rights, and the Statue of Liberty remains a beacon of hope for people throughout the world who yearn for freedom.

On this special Fourth of July, I am especially proud to serve our nation as Commander in Chief of such splendid forces. Nancy and I salute you and join all of our fellow Americans in wishing you and your families, here and abroad, a safe and happy Independence Day.

*Ronald Reagan*

Ronald Reagan



4 July 1986

### A MESSAGE FROM THE COMMANDANT OF THE MARINE CORPS

Today, we join our fellow Americans in celebrating the birth of our country. As we watch the flags unfurl, from sea to shining sea, we are reminded of what independence means and what can be lost if we don't stand strong in its defense.

To Marines, life, liberty, and the pursuit of happiness are more than just words from the Declaration of Independence. They are rights we carefully guard to preserve the legacy of our heritage.

For over 210 years, Marines have served selflessly alongside other brave patriots to ensure America's independence. Today, Marines around the world are committed to preserving peace. With the best equipped and most highly qualified force in our Nation's history, we stand prepared to meet any challenge.

On this Independence Day, my pride in your unwavering spirit and vigilance is beyond measure. As Marines, let us rededicate our lives and honor to keep America secure and free.

Happy birthday, America! Semper Fidelis, Marines!

*P. X. KELLEY*  
General, U.S. Marine Corps



## 12 PACK BEER

ALL POPULAR BRANDS

6.99 EACH



12/12 OZ. CANS

DON'T FORGET THE BUDWEISER LIBERTY BOG JULY 4 & 5

## SUITCASE BEER

- BUD
- BUD LIGHT

11.99 EACH



24/12 oz. Cans

## BARTLES & JAYMES

PREMIUM WINE COOLER

4 - 12 OZ. BOTTLES



3.99 EACH

## LOVES BREAD

KING WHITE & GOLDEN WHEAT  
1 lb.



89¢ EACH

## LOVES HOT DOG & HAMBURGER BUNS

8 PACK



99¢ EACH

## LAYS & RUFFLES TWIN PACK



1.79 EACH

## CASE PEPSI

- DIET PEPSI
- DIET PEPSI FREE
- MOUNTAIN DEW
- PEPSI
- PEPSI FREE
- PEPSI LIGHT



MIX N MATCH ANY COMBINATION YOU DESIRE

7.99 EACH

24 12 OZ. CANS

## CASE COKE

- COKE
- CLASSIC COKE
- DIET COKE
- CF COKE
- CF DIET COKE
- CHERRY COKE
- DIET SPRITE
- CF TAB
- SPRITE



MIX N MATCH ANY COMBINATION YOU DESIRE

7.99 EACH

24 12 OZ. CANS



# 1st MAB ECG prepares for second ship

## MPS-3 embark

The Motor Vessel 1st Lt. Jack Lummus is due to arrive at Port Panama City, Fla., this weekend with its loading schedule to begin Monday.

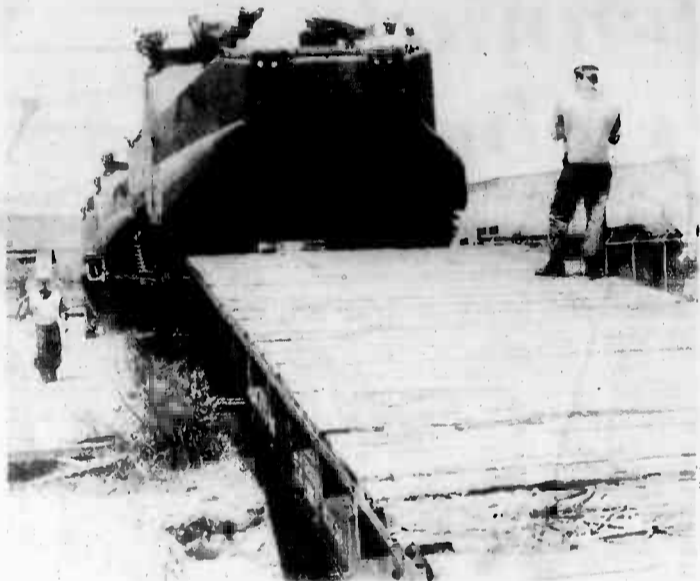
The MV Lummus, the second of four ships of the Maritime Prepositioning Squadron-3, will be loaded by members of the 1st MAB's Embarkation Command Group, who have been in Panama City since mid-April. The first ship of the squadron, the MV 1st Lt. Baldomero Lopez, was loaded during May and left Florida on June 6.

Since then, ECG Marines and civilian stevedores have been unloading railroad cars, staging equipment and conducting Limited Technical Inspections to prepare for the Lummus' loading. To ensure that all available space is used, ECG crews have been adjusting mobil loads — palletized containers of smaller equipment — so they can be put on the vehicles to be loaded aboard the ship.

The third ship of MPS-3, the MV PFC Dewayne Williams, is scheduled to arrive in Panama City in August, followed by the fourth, and final ship, the MV Sgt. William Button.



Lance Corporal L.W. McSwiney, a longshoreman with the Embarkation Command Group, 1st MAB, guides a vehicle off a flat car.



Assault Amphibian Vehicles are unloaded from railroad cars.



Lieutenant General J.J. Went (center), Assistant Chief of Staff for Installations and Logistics and Quartermaster of the Marine Corps, Headquarters, U.S. Marine Corps, visits with Col. Jack W. Cunningham (second from right), Commanding Officer, Embarkation Command Group, 1st MAB, and Capt. Anthony G. Papadopoulos, Motor Vessel 1st Lt. Baldomero Lopez Ship Master and Embarkation Command Group Marines.



Gunnery Sergeant Tony Vasquez, Guard Chief, Embarkation Command Group, 1st MAB, instructs Marines assigned to guard duty in security procedures.

MISS  
LIBERTY...  
SYMBOL  
OF  
FREEDOM  
AND  
HOPE.  
1886-1986



## Centennial celebration



Like the 1886 unveiling of the Statue of Liberty, this year's celebration of her 100th birthday is expected to feature an extravaganza of unprecedented proportions.

The Army, Navy and Marine Corps will join with the Air Force and Coast Guard, July 3-6, for Liberty Weekend '86, when the statue will be unveiled after its \$230 million facelift.

At opening ceremonies for the 1886 celebration, President Grover Cleveland and the Marine Corps Band led a procession through Manhattan. Following closely behind were forma-

tions of mounted Army troops and four battalions of sailors from three ships of the North Atlantic Squadron: the Tennessee, Alliance and Yantic. Veterans from the War of 1812 and the Mexican War also participated.

This year, members of the military will have an operational, as well as ceremonial, role in the festivities. Officials estimate that some 20 million people will attend Liberty Weekend '86. Members of the military are expected to be called on to augment local, state and federal security forces.

The Coast Guard estimates

that 30,000 to 40,000 small craft will cram into New York Harbor to watch the activities. Eighty to 100 Coast Guard vessels, assisted by as many as 200 vessels from the civilian Coast Guard Auxiliary, will be on duty to police the harbor and provide harbor security.

However, the most memorable military participation is likely to be of a ceremonial nature.

Eleven U.S. Navy ships, including the aircraft carrier USS John F. Kennedy and the battleship USS Iowa, will participate in the activities. The USS Kennedy was originally planned as the stage for a July 3 opening show; however, these plans were scratched, and the carrier is now planned as a primary viewing area.

The USS Iowa and nine other U.S. Navy ships will join 20 warships from Brazil, Canada, France, West Germany, Honduras, India, Ireland, Jamaica, Japan, Morocco, The Netherlands, Norway and the United Kingdom for an "International Naval Review."

According to William G. Brittain Jr., DoD coordinator for the festivities, these ships will be anchored in New York Harbor and along the Hudson River. Each will render a 21-gun salute as the USS Iowa, the official reviewing ship, passes.

Twenty-two tall ships from

around the world will be featured during Operation Sail 1986. Led by the U.S. Coast Guard bark Eagle, ships from Argentina, Belgium, Chile, Columbia, Ecuador, Indonesia, Italy, Mexico, Oman, Portugal, Spain, Uruguay and Venezuela will sail through New York Harbor and up the Hudson River.

The French air force is expected to perform a flyover of Lady Liberty, commemorating the French people's gift of the statue to the people of the United States 100 years ago. Aircraft from the U.S. Air Force, Marine Corps and Navy will also conduct flyovers during Liberty Weekend.

Bands from the Army, Navy, Air Force and Marine Corps are scheduled to keep Liberty Weekend '86 filled with music from start to finish. Military flag and drill units and color guards will be joining them.

One hundred years ago, the *New York Times* called the Statue of Liberty unveiling the day "a hundred Fourths of July broke loose."

Planners say this year's event "will not only be recorded as one of America's most splendid moments. It will go down as one of the world's most spectacular events of all time."

By Donna Bolinger  
American Forces Information  
Service

# Survivor benefit plan changes

Required spouse agreement and elimination of the Social Security offset system are among significant changes to the Survivor Benefit Plan in the Department of Defense Authorization Act for FY-86.

Enacted by Congress in 1972, the Survivor Benefit Plan provides an annuity in monthly payments to the retiree's spouse, or other dependents, upon the retiree's death.

The government pays a substantial part of its cost. The cost to retirees is withheld from retired pay — there is no cost to any member until he or she receives, or is entitled to receive, retired or retainer pay. The following changes became effective March 1 of this year:

For active duty members, spouse agreement is required if the member declines coverage under the plan; elects less than maximum spouse coverage; or elects child-only coverage.

If spouse agreement is not received before an active duty member's retirement date or in conjunction with a reservist's election upon notification of eligibility for retired pay, then full spouse costs and coverage will be implemented, regardless of any request by the member to do otherwise.

The Social Security offset is eliminated and replaced with a two-tier benefit structure. Surviving spouses, former spouses and dependent children will receive 55 percent of the base amount until age 62 and 35 percent thereafter.

Surviving spouses receiving an annuity under the plan on Oct. 1, 1985, and beneficiaries of members who were retired or who were retirement-eligible on or before Oct. 1, 1985, will be "grandfathered." That is, the service finance offices will compute annuities for these persons under both Social Security offset and the two-

tier system, and will pay the greater amount.

The member may elect former spouse and child coverage for children of marriage to that former spouse (children of other marriages may not be covered);

The member may elect a reduced base amount for former spouse coverage;

The former spouse loses annuity if remarried before age 60;

The former spouse may receive only one Survivor Benefit Plan or Reserve Component Plan annuity;

The former spouse annuity is subject to an offset for dependence and indemnity compensation.

The low-cost portion of the Survivor Benefit Plan or Reserve Component Survivor Benefit Plan participation will be increased (indexed) by the same percentage as any increase in basic rates. For example, the new low-cost base amount is \$309 instead of \$300 due to the Oct. 1, 1985, pay raise.

When a retirement-eligible member and spouse die as a result of a common accident, a Survivor Benefit Plan annuity may be paid to eligible surviving children.

A surviving spouse may receive a Survivor Benefit Plan annuity if the member was a commissioned officer with less than 10 years commissioned service but with more than 20 years active duty service.

Surviving spouses of Reserve members who died after Sept. 30, 1978, and who were eligible to participate in the Reserve component of the Survivor Benefit Plan, but who died before receiving their notice of eligibility, or who died during the 90-day notification of eligibility period are eligible for a Reserve Component Survivor Benefit Plan annuity.

Children of reserve members described are eligible for Reserve Component Survivor Benefit Plan coverage if the member and spouse died in a common accident.

If a member elects spouse or spouse and child coverage before retirement and remarries after retirement, the member can increase coverage or withdraw from spouse coverage with consent of the present spouse. The member must pay accumulated differential costs, plus interest, for increased coverage.

A provision in last year's authorization act that eliminated the Social Security offset for widows receiving benefits on their own earnings record was repealed. However, members who became participants

during that period of time are allowed to withdraw from the plan if they choose.

Surviving spouses who lost entitlement to dependent indemnity compensation through remarriage after age 60 may repay previously refunded Survivor Benefit Plan costs and thereby reestablish annuity under the plan.

Survivor Benefit Plan annuity will be paid without offset in the month of death when dependency and indemnity compensation is payable. Such payment does not start until the first of the following month; prior to this

change, the Survivor Benefit Plan annuity was offset in the month of death.

While not contained specifically in the Defense Authorization Act, it is service policy for members and their spouses to be notified 45 days before retirement of the options available with the Survivor Benefit Plan.

For further information about these changes or the basic Survivor Benefit Plan itself, contact the personnel branch at your installation.

American Forces Information Service

## Hawaii Marine

The Hawaii Marine is an unofficial newspaper published every Thursday by RFD Publications, Inc., 46-016 Alaloe St., Kaneohe, HI 96744, a private firm in no way connected with the Department of the Navy or the United States Marine Corps. All advertising is provided by the publisher, RFD Publications Inc., by calling 235-5881 or by visiting their office. Circulation is 8,000.

The editorial content is edited, prepared and provided by the Joint Public Affairs Office, Marine Corps Air Station/1st Marine Amphibious Brigade, Kaneohe Bay, Hawaii, 96863-5001, telephone 257-2178/2179. Opinions expressed by the publisher and journalists are their own, and are not to be considered an official expression of the Department of the Navy or the United States Marine Corps.

Articles for publication must be submitted to the Joint Public Affairs Office by 4:30 p.m., on Thursday for the following week's publication. The Hawaii Marine staff solicits articles and photographs from all Marine Corps, Navy and civilian organizations sanctioned by the Commanding Officer, MCAS Kaneohe Bay, however, the Joint Public Affairs Officer, or his designated representative, reserves the right to edit or rewrite materials submitted for publication. Submission does not constitute publication. All photographs published are Official Marine Corps photographs unless otherwise noted. The Hawaii Marine subscribes to the American Forces Information Service (AFIS), and Navy Editor Service (NES), which articles are published on a regular basis.

Items advertised in the Hawaii Marine must be made available for purchase, use, or patronage to everyone without regard to race, creed, color, national origin, religion, age or sex of the purchaser, user or patron. A confirmed violation, or rejection, of this policy of equal opportunity by any advertiser will result in the refusal to print advertising from that source. The appearance of all advertisements in the Hawaii Marine, to include inserts and/or flyers, does not constitute endorsement by the Department of Defense, the Department of the Navy or the United States Marine Corps, of the firms, products or services advertised.

## FAMILY EYE EXAMINATION PLAN

Includes All Immediate Family Members

**\$39**

CHAMPUS Participant  
SOFT CONTACT LENSES

From **\$79**

PRESCRIPTION GLASSES

From **\$49**



All Contact Lens Fees include Lenses, Care Kit, Follow-up Care and 90 DAY TRIAL PERIOD.

COMPLETE PROFESSIONAL VISION SERVICES  
DEDICATED TO QUALITY AND SERVICE IN VISION CARE

Dr. Charles Dean  
Optometrist

KAILUA  
139 Hekili St.  
261-9735



# OFFER EXTENDED THROUGH JULY!!!

## JUNE SPECIAL: AIRFARE AND ROOM FOR TWO START AT \$139. AND THE RENTAL CAR IS FREE!

SAVE ON FUN DURING  
"DON'T BE A SHUT-IN" MONTH!  
Get roundtrip airfare for two and a night at any of 100 different hotels and condos on all major islands... with names like Sheraton, Hilton and Amfac!

Throughout this very special June, prices are starting at only \$139 for two and you get a rental car free the first day! Additional room nights and car are extra. Rates for extra night and car are shown in parenthesis.

Call Mid Pacific Air right now! June is "Don't Be A Shut-In" month and we're flyin'!



OAHU	MAUI	KAUAI
ALOHA SURF HOTEL \$165 (\$45)	MAUI HUKILAU \$175 (\$49)	KAUAI SANDS \$165 (\$40)
TRAVEL LODGE \$175 (\$55)	MAUI SEASIDE \$180 (\$55)	KAUAI BEACHBOY \$175 (\$55)
PAGODA \$175 (\$60)	COCONUT INN \$190 (\$70)	SHERATON COCONUT BEACH \$190 (\$75)
WAIKIKI BEACHCOMBER \$180 (\$55)	KAANAPALI BEACH \$200 (\$80)	SHERATON KAUAI \$195 (\$80)
ALA MOANA AMERICANA \$185 (\$65)	KAMAOLE SANDS \$215 (\$94)	PONO KAI \$195 (\$80)
PRINCESS KAIULANI \$185 (\$65)	SHERATON MAUI \$215 (\$95)	COCO PALMS \$200 (\$85)
PACIFIC BEACH \$185 (\$70)	MAUI INTER-CONTINENTAL \$225 (\$100)	PLANTATION HALE \$210 (\$95)
SHERATON WAIKIKI \$240 (\$120)		KAUAI HILTON VILLAS \$215 (\$95)
		WAIHAI \$215 (\$100)
	<b>KONA</b>	
	KONA HUKILAU \$139 (\$39)	
	KONA SEASIDE \$170 (\$45)	
	KING KAMEHAMEHA \$180 (\$64)	
	KONA SURF \$190 (\$70)	
	SHERATON ROYAL WAIKOLOA \$190 (\$75)	
	ROYAL SEA CLIFF \$195 (\$80)	
	<b>HILO</b>	
	HILO HUKILAU \$139 (\$39)	
	NANILOA SURF \$180 (\$55)	

**FLY/DRIVES FROM \$59 PER PERSON DOUBLE**  
Going inter-island for the day? Get roundtrip airfare and one day's rent a car for less than regular airfare. Based on two people sharing a car.

*The New*  
**MID PACIFIC AIR**

For reservations or more information, see your travel agent, or call Mid Pacific Air.  
24 Hour Reservations: Oahu 836-3313, Maui 242-4906, Kauai 245-7775 or 245-5681, Big Island 961-6626 or 329-0944.

Prices subject to change without notice.

**1st TIME EVER LIMITED OFFER\***

**HURRY!  
FINAL WEEKS!**

1 YEAR MEMBERSHIP

2 FOR 1\*

**\$99**

PLUS \$20 REGISTRATION FEE PER PERSON

ASK FOR OUR UNADVERTISED SPECIAL!

- OPEN 7 DAYS A WEEK
- MEN, WOMEN & STUDENTS
- CYBEX EQUIPMENT
- STAIR MASTER
- BICYCLE
- SAUNA, STEAM
- DANCE AEROBICS & EXERCISE CLASSES
- OLYMPIC FREE WEIGHTS
- PERSONALIZED TRAINING
- BABYSITTING AVAILABLE (M-F 8 am-10 am)

\*Must Join On First Visit

**KAILUA**



Health Club

**263-6678**

1090 Keolu Drive  
Kailua, Enchanted Lake

Next to 7-11

Hours: M-F 6am-9pm • SAT., 9am-5pm • SUN., 12pm-5pm

# MAG-24 thinks safety

To stimulate safe driving and discourage drinking while driving, Marine Aircraft Group-24 will hold a July 4th Holiday Traffic Safety/Vehicle display, on July 3, from noon to 3 p.m. The display will be held on the grassy area and parking lot by the Group's head-

quarters, and will include the "Seat Belt Convincer"; a Military Police mobile unit; a tactical vehicle exhibit by MABS-24; and safety information booths set up by Brigade, MAG-24 and H&MS-24 safety departments. Also included in the

display will be a Blue and White mobile and motorcycle units from the Honolulu Police Department; a safety display booth by HPI; a Corvette display, open to all Kaneohe Bay military personnel, and their families; and a Motorcycle Skill Course competition set up by

the Station Training Motorcycle Safety personnel. Soft drinks and hot dogs will be provided by the Exchange, and the Group will provide a First Aid station. For more information call GySgt Acuna at 257-3214/2957.

## Courts-Martial Report

**Lance Corporal Alphonso Bert, 8d Combat Engineers Bn., 3d Marines,** was convicted during a General Court-Martial, Jan. 24, of conspiring to distribute cocaine; three counts of distributing cocaine; and of two counts of using marijuana. He was sentenced to be confined for two years; to forfeit all pay and allowances; to be reduced to Private; and to be discharged with a Bad Conduct Discharge.

**Private Jeffery A. Wilson, Hqs. Btry., 1/12,** was convicted during a General

Court-Martial, May 21, of four counts of wrongfully distributing cocaine; one count of wrongfully distributing marijuana and cocaine; and of one count of wrongfully possessing marijuana. He was sentenced to be confined for five years; to forfeit all pay and allowances; and to be discharged with a Dishonorable Discharge.

**Sergeant Robert C. Scherf, 1/12,** was convicted during a General Court-Martial, May 22, of communicating indecent language on

seven separate occasions; of conduct of a nature to bring discredit to the Armed Forces; and of communicating a threat to injure. He was sentenced to be confined for eight months; to forfeit \$200 a month for eight months; and to be reduced to PFC; and to be discharged with a Bad Conduct Discharge.

**Private Wayne B. Elliot, Hqs. Btry., 1/12,** was convicted during a General Court-Martial, May 23, of being UA from Jan. 23 to March 18, and of two counts of distributing cocaine. He was sentenced to be confined

for 18 months; to forfeit \$300 a month for 18 months; and to be discharged with a Bad Conduct Discharge.

**Lance Corporal Gary L. Williams, Co. "A", 3d Combat Engineers,** was convicted during a General Court-Martial, May 28, of conspiring to distribute cocaine, and three counts of distributing cocaine. He was sentenced to be confined for 18 months; to forfeit all pay and allowances; to be reduced to Private; and to be discharged with a Bad Conduct Discharge.

### IG quiz #5

**Editor's Note:** The following general military subjects quiz will be published through November to help you refresh your memory and add to your knowledge for the upcoming IG inspection. If you have questions you would like to add to the weekly quiz, you can submit them, along with the reference you extracted them from, to the Hawaii Marine editor, JPAO, building 244, next to the Family Theater, weekdays between 8 a.m. and 4 p.m.

1. What are the dimensions of a straddle trench?
  2. Mars Inc. invented M&M's in 1941 for the soldiers of the U.S. Army to use as a quick energy snack that would not get their trigger finter sticky. True or False?
  3. Drill — Double Time March may be given at the halt, while marching at quick time, or while marching in place. True or False?
  4. You are required to wear the necktie clasp when the service coat is worn. True or False?
  5. The mandatory possession date for the "wooly pully" sweater is 1 October 1987? True or False?
  6. Which state claims the most CMCs as native sons?
  7. When two marksmanship badges are worn, what should be the approximate distance between them?
  8. What are the six short distance marching movements that you can execute from order arms?
  9. Name the only officer and enlisted rank insignias that you must check to be sure they are a pair?
  10. Commanding Officers may deny a request which deals with which two subjects?
- Questions 2, 6 and 9 are not EST-related.

### ANSWERS

1. One foot wide, two and one-half feet deep and four inch.
2. True.
3. True.
4. False.
5. False — 1 October 1986.
6. Pennsylvania (5).
7. Nicholas, Wharton, Harris, Zelin and McCawley.
8. Side step, back step, open ranks, close ranks, close and extended march.
9. Colonel and Sergeant Major of the Marine Corps.
10. Disciplinary action under the UCMJ, and discharge proceedings.

**Your smartest move may be a lateral one.**

If you're not content with your present job, if you're looking to broaden your experience, learn a new job or seeking a new challenge, a lateral move may be just what you're looking for. Every year thousands of Marines take advantage of the lateral move option.

The advantages are many. You keep building your retirement, keep increasing in rank and you're working within an organization you know something about. In short, you're not starting over. You're taking a new direction in your career.

If you don't think you qualify for a lateral move because your GT score is low, think again. You can take the test over any number of times and use only your most recent score.

Plus you're keeping your educational and medical benefits. Talk to your career planner about a lateral move.



You can count on the Corps.

**STAY MARINE.**

JOINT CAREER PLANNING OFFICER	
1stLt Schopmeyer	257-3244
JOINT CAREER PLANNING SNCOIC	
1ST MAB	
MSgt HYLE	257-2403
JOINT CAREER PLANNING MCAS SNCOIC	
GySgt Pavlik	257-2403
JOINT CAREER PLANNING ASNCOIC	
1ST MAB	
GySgt Sawyer	257-3244
HQSVCCO 1ST MAB	
Sgt Gilbert	257-3670
COMMSPTCO	
SSgt Sablan	257-3632
HQCO 3D MAR	
SSgt Oldham	257-2993
1ST BN 3d Mar	
SSgt Sechler	257-2167
2D BN 3D Mar	
SSgt Minier	257-3107
3DBN 3d Mar	
GySgt Martinez	257-3142
1STBN 12TH MAR	
SSgt Calder	257-3225
H&MS-24	
MSgt Dukes	257-2230
MACS-2	
SSgt Thomas	257-2995
MABS-24	
SSgt Gonzalez	257-3693
HMM-165	
Sgt Kerr	257-2788
HMM-262	
SSgt Metcalf	257-2417
HMM-265	
Sgt Hall	257-2788
HMM-364	
Sgt Scoll	257-2393
HMM-463	
Sgt Myers	257-3201
VMFA-212	
GySgt Bailey	684-3156
VMFA-232	
Sgt Turner	684-3267
VMFA-235	
Sgt File	684-9181
BSSG 1ST MAB	
SSgt Espinosa	257-3127
1ST RadBn	
GySgt Hayden	257-2725
HHS MCAS	
SSgt Carey	257-2912
SOMS MCAS	
Sgt Hudson	257-3439
FMFPAC	
GySgt Johnson	477-5090
MARBKS PEARL HARBOR	
SSgt Hall	471-9516
CAMP H M SMITH HI	
SSgt Jones	477-6865
MARINE CORPS RESERVE	
	471-0202
MARINE CORPS RECRUITING Honolulu	
	546-7560
MARINE CORPS RECRUITING Kaneohe	
	247-8773

**See your Career Planner**

# Island Happenings

## Island events

The Pan Pacific 16-foot South Pacific Championships, held July 2-17 in Hickam Harbor and offshore Waikiki are conducted by the Royal Hawaiian Ocean Racing Club. Twenty, 16-foot skiffs will come from Australia to compete. Dick Gooch, 942-7760.

Two events for "green thumb" people will be held in Hilo, Hawaii, July 3-6. The annual Hilo Orchid Society Show, at Civic Auditorium feature prize-winning orchids by Hawaii's top growers. Neil Okamoto, 965-9299. The annual Big Island Bonsai Show, at Wailoa Center, displays Japanese bonsai, some several hundred years old. Mable Meyer 961-7360.

Another Hilo, Hawaii, event, the Fourth Fest, July 4, is a day filled with a variety of activities: a Carole Kai Bed Race, a flea market, canoe races and other sports and activities. Edwin Hara 961-6651.

The Parker Ranch Rodeo and Horseraces, July 4, will be held in Waimea, on the island of Hawaii. Elaine Scott 885-7555.

The annual Naalehu Rodeo, July 4-6, is one of Hawaii's oldest rodeos. The event, now in its 43rd year, features the usual rodeo events as well as games, food booths and Hawaiian entertainment. Naalehu, Hawaii. Joseph Serrao 929-8818.

The annual Makawao Statewide Rodeo, July 4-6, is an oldtime upcountry rodeo held at Oskie Rice Arena, Makawao, Maui. The rodeo

parade throught the town is on July 4. Brandon Baltazar 572-8736.

The Big Island Marathon and Half Marathon, July 6, is a 26.2-mile and a 13.1-mile loop run starting and ending at the Hilo Hawaiian Hotel. Hilo, Hawaii. Laurie Lannon 959-7987.

## Teen parents course

Family Service Center, here, offers a course to parents of teenagers, July 14 to Aug. 17, on Mondays 7 to 9 p.m.

Systematic Training For Effective Parenting is a realistic and sensible approach to family relations making them more satisfying and enjoyable for both parents and teens. This class is free and includes a parenting workbook for each family.

For reservations call 257-2128/2129.

## 4th of July Celebration NAS Barbers Pt

Barbers Point is gearing up for its Ninth Annual Old Fashioned Fourth of July Celebration and the public is invited to join in the festivities at Pointer Field 12 noon to 8 p.m.

Admission is free and there is ample parking. Traditional Fourth of July parade, games, food and entertainment will culminate with a patriotic speech and a fireworks display at 8 p.m.

The celebration will begin with a noon parade around the track field led by Dixie Cats, followed by Pazazz at 1:30; Iwalani School of Dance

at 2:45; and Naupaka Blend at 4 pm. A parachute demonstration begins at 5:30; Nick Masters' Mustangs play at 5:45; and Nohelani Cypriano takes the stage at 6:45.

## ARC Volunteers needed

Give something back to your community by registering as an American Red Cross Volunteer. The Red Cross always has openings in the Navy Medical and Dental Clinics.

Other areas for volunteers to work in are also available. All you need is a good attitude and a sincere commitment.

For more information, stop by the American Red Cross Pearl Harbor Office, near Makalapa Gate, or call 474-9152.

## 'Visit ship' 4th of July

The USS Ouellet (FF-1077), a Pearl Harbor-based frigate, will celebrate the Fourth of July by hosting a special "Visit Ship" July 4 and 5 from noon until 4 p.m., at Pearl Harbor.

The 438-foot Ouellet is a unit of Destroyer Squadron Thirty-Five, commanded by Cmdr. Larry G. Eggleston. It has a crew of approximately

17 officers and 225 enlisted personnel.

The Ouellet's primary mission is to provide anti-air, antisubmarine and antisurface protection for military and merchant shipping, amphibious task forces and aircraft carrier battle groups.

Visitors should park outside Nimitz Gate at the Naval Base Pass and ID parking lot. Transportation will be provided to and from the ship location. Group tours will be conducted and reservations are not accepted.

## Computer Electronic swap meet

The second annual Computer and Electronic Swap Meet will be held at the NBC Exhibition Hall on Aug. 21, from 9 a.m. to 5 p.m. A 50 cent donation will be collected at the door.

Items to be sold will include computers and accessories, communication equipment, copiers, business machines, VCRs, stereos, audio-visual

equipment, televisions, electronic appliances and high-tech components.

Individuals have a place to sell used machines and odds and ends at a cost comparable to want ads. Space is limited, so reservations should be made as soon as possible to help with planning.

To reserve space or for information, call Barry Gay at 521-3162.

## Kailua Super Saver Salon

**Our Specialties For Women, Men & Children**

- Precision Hair cut ..... \$7
- Shampoo/Conditioner/Finish ..... \$7
- Permanent Wave

with either or both of the above ..... additional \$7

NO APPOINTMENT! COME IN TODAY!  
(service subject to time availability)  
Must be 12 years or older for permanent wave.  
Long hair slightly higher.



## LIBERTY HOUSE

AN American COMPANY

**Ronald T. Nelson**  
D.D.S.

### FAMILY DENTISTRY

970 N. Kalaheo Ave.  
Suite C #309  
PALI PALMS PLAZA  
KAILUA

HRS:  
Days & Evenings  
By Appointment  
254-5503



**THE Very BEST BUFFETS IN TOWN!**

*Sunday and Monday • 5:30pm to 9:30pm*  
**CRAB LEG AND PRIME RIB BUFFET**  
Alaskan King Crab Legs and Prime Rib at a terrific all you can eat price!  
**\$15.50**

*Tuesday • 5:30pm to 9:30pm*  
**INTERNATIONAL NIGHT**  
Featuring the world's cuisine in one fabulous buffet.  
**\$12.95**

*Wednesday, Thursday and Friday • 5:30pm to 9:30pm*  
**JAPANESE BUFFET DINNER**  
Sashimi, shrimp tempura, teriyaki steak and many more of your favorites on our buffet AND prepared by our Teppanyaki chefs.  
**\$12.95**

*Saturday • 5:30pm to 9:30pm*  
**PRIME RIB BUFFET DINNER**  
The best this side of Waikiki. Save room for all the pies and cakes featured on our dessert table.  
**\$12.95**

*Daily except Sunday & Thursday • 11am to 2pm*  
**HAWAIIAN LUNCHEON LU'AU**  
Imu Kalua pig, lomi salmon, lau lau, poke and many more island favorites featured. Bring your guests from the mainland for a taste of Hawaii.  
**\$7.25**

*Thursday • 11am to 2pm*  
**JAPANESE LUNCHEON BUFFET**  
Beef, Pork, or Chicken Teriyaki and Katsu, Tempuras, Sashimi, Sushl, Noodles, Somen, oriental salads and much more.  
**\$8.95**

*Sunday • 10:30am to 2pm*  
**THE QUEEN'S SUNDAY BRUNCH**  
Superb breakfast and luncheon cuisine combined in one fabulous buffet.  
**\$8.95**

*Live Hawaiian entertainment at the Lanefoon Luau and every evening.*



**Queen Kapiolani HOTEL**

150 Kapahulu Ave. / Ample Parking  
Reservations Requested—Phone:  
922-1941 or 922-0020

# SOMETHINGS SPECIAL.



**Our no-stop check-in** means you can select your seat and get all your boarding passes before you begin your trip. It's simple, convenient, and a real time-saver.

**Now with non-stop flights to four gateway cities.**

With the addition of our daily service to Chicago, we can now offer you more ways to the Main-

land. Including our direct flights from Maui to Los Angeles and Dallas/Fort Worth.

**Connecting flights throughout the Mainland. And the world.**

Take a non-stop flight to one of our four gateway cities, then connect to any of over 80 cities in the U.S. (including seven new additions in the Carolinas).

Or go on to business and vacation destinations like Canada, Mexico,

the Caribbean, London. Even Paris and Frankfurt.

**Something Extra Special.**

Our People. They're the reason American Airlines was voted the most preferred airline for the fifth consecutive time by the members of the International Airline Passengers Association.

Over 200 employees in Hawaii are ready to show you what "something special in the air" is all about.



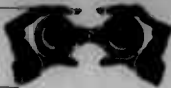
CHICAGO  
SAN FRANCISCO  
LOS ANGELES  
DALLAS/FORT WORTH



For reservations and information, call your nearest SATO or American Airlines. On Oahu, 526-0044. Neighbor Islands, 1-800-232-0980.

**American Airlines**  
*Something special in the air.*

# At a glance



## Air Station commissary

The Commissary Store will be closed on July 4, in observance of Independence Day.

## 4th of July salute

To honor Independence Day, the Air Station's Saluting Battery will give a 21-gun salute in front of the MCAS/1st MAB headquarters, starting at noon, July 4.

Active duty personnel, retirees and civilian employees, and their families, are invited to attend.

## Fireworks celebration

A half-hour fireworks show will be a part of the Annual Fourth of July Celebration, July 3, at 8 p.m., at the Kailua Beach Park.

Other activities include a Royal Hawaiian Band concert at the park's pavilion, at 7 p.m.

On July 4th, more than 100 units will march in a parade at 10 a.m. in Kailua. Participating units will include the MCAS Color Guard; Hqs Co, 3d Marines; and the FMFPac Band. The parade route is from Kaimali

Elementary School to Kailua Intermediate School.

Awards ceremonies will be held after the parade at the Kailua Recreation Center Pavilion, and will feature entertainment from a barbershop quartet, senior citizens, hula hula, and an aerobic demonstration.

For information, call 261-2727.

## 4th of July Fireworks

During the 4th of July celebrations, Kaneohe Bay residents are not authorized to use any type of fireworks unless it has been approved by the Air Station commanding officer and coordinated through the Fire Department here.

## Navy Relief Office Hours shortened

During August, The Kaneohe Bay Navy Relief Office will be running on a limited time schedule.

The office will be open Mondays, Wednesdays and Fridays, from 8 a.m., to 2 p.m. On Tuesdays and Thursdays, a skeleton crew will handle emergency leave and checking-in and -out only.

Appointments should be made in advance. If assistance is necessary the Pearl Harbor Office will be open on a regular basis.

For more information, call 254-1327 and 254-1328.

## Package store hours

The Air Station Package Store has changed its hours of operations. They are:

- Monday, 3 to 9 p.m.
- Tuesday-Thursday, 10 a.m. to 9 p.m.
- Friday and Saturday, 10 a.m. to 10 p.m.
- Sunday, 11 a.m. to 5 p.m.

## Auto Service Center

The Auto Service Center, here, has started taking appointments for maintenance work, on a trial basis.

Some of the services offered by the center are vehicle inspections, oil and filter changes, chassis lubrication, tire and wheel bearing repairs, battery replacements and tune-up service.

For more information, or to make an appointment, call the Auto Service Center, at 257-2039.

## Holiday hours

All Exchange activities will be closed on July 4, except the following.

ACTIVITY	OPEN/CLOSE
Main Store	10 a.m. to 5 p.m.
CFS #1	8 a.m. to 10 p.m.
Self Service	10 a.m. to 9 p.m.
Deli	9:30 a.m. to 5 p.m.
Bowling Center Snack Bar	11 a.m. to 9 p.m.
Car Rental Facility	8 a.m. to 6 p.m.
Golf Pro Shop	7 a.m. to 5 p.m.
Golf Course Snack Bar	6 a.m. to 6:30 p.m.
Wiki Wiki Snack Bar	8 a.m. to 9 p.m.
CFS #2, Mamanua	8 a.m. to 9 p.m.
Ice Cream Parlor	6:30 a.m. to 9 p.m.
Rent-All Center	10 a.m. to 6 p.m.
Service Station	8 a.m. to 6 p.m.
Mobile Canteens	8 a.m. to 9 p.m.

**KIYOKO'S BARBER SHOP**

**NOW UNDER NEW MANAGEMENT**

**ANN KIM**

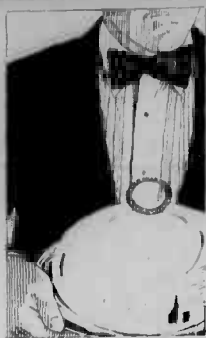
- Professional Hair Stylists for men, women & children
- Reasonable Prices

**OPEN DAILY:**  
**Mon-Fri 8:30-6 pm**  
**Sat & Sun 8:30-5 pm**  
**488-0211**

98-044 Kam Hwy, Waimalu Shopping Center

# WINDWARD ENLISTED CLUB

KMCAS



**SPECIAL DINNER**  
**JULY 11th ONLY!**  
 at the  
**BREEZY INN**

Have Dinner With Us First.  
 Then See Tanya Tucker!

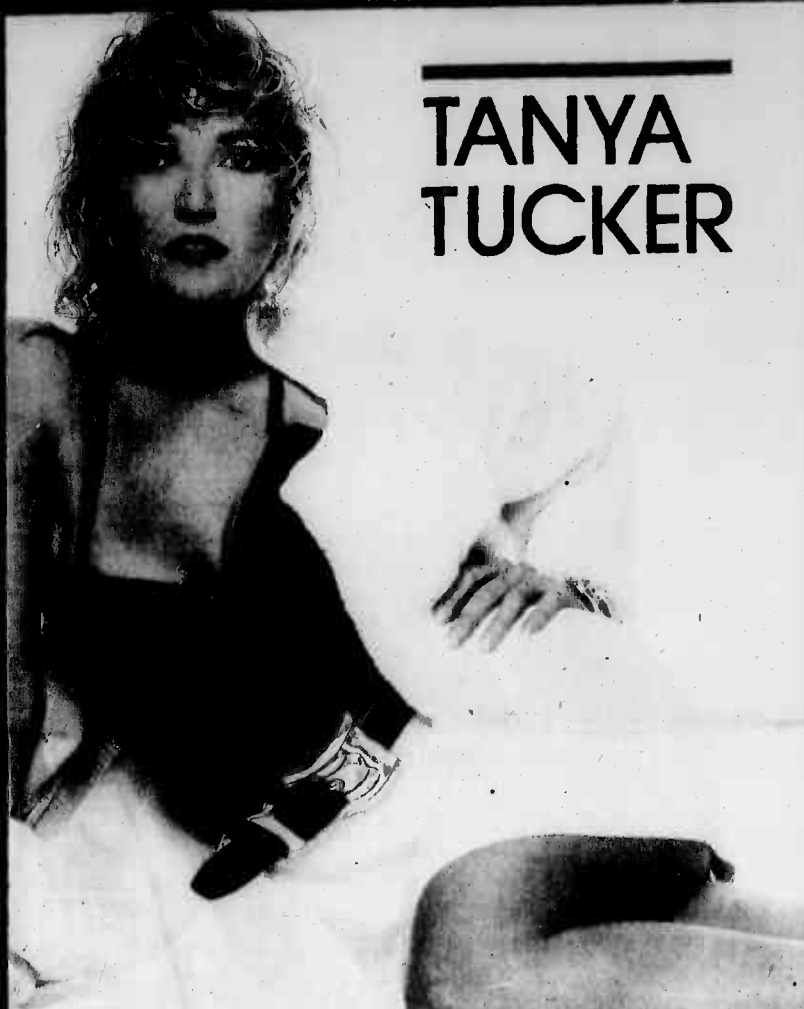
**SPECIAL DINNER MENU: \$10<sup>95</sup>**  
 20 oz. TOP SIRLOIN or PRIME RIB

Reservations: 257-2657 or 257-2873

MASTERCARD & VISA ACCEPTED FOR CONCERT TICKETS, DINNER & BEVERAGE PURCHASES

# WINDWARD ENLISTED CLUB

KMCAS



# TANYA TUCKER

FRIDAY

# JULY 11, 1986

AND SPECIAL GUEST STAR



# MISS TINA MARIE

Before and After the Tanya Tucker Show!!!

**TICKETS**  
**\$10<sup>00</sup>** ADVANCE  
**\$12<sup>00</sup>** AT THE DOOR

**DOORS OPEN 8:00 PM**  
**SHOW STARTS 10:30 PM**

**RESERVATIONS A MUST**  
**CALL: 257-2657 or 257-2873**  
 Welcome PEARL HARBOR • ALL RANKS WELCOME

# WINDWARD ENLISTED CLUB

KMCAS

**HONOLULU HAWAII'S GRAND OPENING**

Purchasing that "SPECIAL FUR" from **JINDO FUR SALON**

May even cover the cost of your trip to Hawaii

**5% Military Discount. Hawaii Store Only.**  
 (with Military I.D.)

US\$1,535	US\$435	US\$1,070	US\$440
US\$465	US\$570	US\$320	US\$220

## WHO SAYS THAT YOU CAN'T AFFORD FUR?

**JINDO FUR SALON**

Jindo Fur Salon has come to Honolulu, offering beautiful and fashionable furs at incredibly affordable prices. Our beautiful fur coats, jackets, and fur-lined raincoats are finely crafted in top-quality mink, blue and silver fox, raccoon, and opossum. The Islands have always had lots to offer, and now with the arrival of Jindo Fur Salon, you can bring home the alluring warmth and beauty of a Jindo fur. So, come visit, and see what Jindo Fur Salon has to offer... and take home something special from the Islands, or write to our Seoul Salon for a free mail order catalog.

- Open Seven Days a Week, 10:00am - 7:00pm
- Major Credit Cards Honored.
- Opening Date June 1.

**Jindo**

**Blackglama**



**Hawaii**  
 Tel: (808) 942-5601  
 1500 Kapiolani Blvd.  
 Honolulu

**Seoul**  
 Tel: (82) 2-388-1111  
 15-1, Hongdae-gil, Seoul, Korea

**Hong Kong**  
 Tel: (852) 2-388-1111  
 15-1, Hongdae-gil, Seoul, Korea

**London**  
 Tel: (44) 20-777-7777  
 15-1, Hongdae-gil, Seoul, Korea

**Frankfurt**  
 Tel: (49) 69-277-7777  
 15-1, Hongdae-gil, Seoul, Korea

**Dusseldorf**  
 Tel: (49) 212-277-7777  
 15-1, Hongdae-gil, Seoul, Korea

**W. Berlin**  
 Tel: (49) 30-277-7777  
 15-1, Hongdae-gil, Seoul, Korea

• Prices are subject to change without notice. Prices may vary store to store depending on exchange rates, import duty.





# Salutes



**EDITOR NOTE:** Salutes recognize individuals for their achievements and exceptional performance and welcomes new arrivals to Hawaii. The information is compiled by the Unit Information Officers and submitted to the Joint Public Affairs Office.

"Five consecutive Navy Technical Proficiency Inspections consistently graded Battery K as outstanding with zero discrepancies noted."



**Promotion**

**Staff Sergeant Joseph Westbrook, 1st Battalion, 12th Marine Regiment, was appointed a Gunnery Sergeant, recently here.**

**1/12 MUC**

The Secretary of the Navy awarded Battery K, 1/12, a Meritorious Unit Citation for their technical proficiency, exercise participation, readiness and individual training from June 2, 1980 to June 17, 1985.

The citation read in part, "specific areas of excellence exhibited by Battery K included close supervision and attention to the Personnel Reliability Program, management of its security program, and tactical proficiency in such areas as technical operations, local security, and tactical movement."

**3d Battalion 3d Marines**

**Welcome Aboard**

- PFC W. Luke
- PFC H.A. Nunn
- LCpl. T. Castle
- Cpl. D.A. Dotson
- PFC W. Luke
- PFC H.A. NUNN
- PAC H.A. Nunn
- PFC H.A. Nunn
- LCpl. T. Castle
- LCpl. K.J. White
- Cpl. D.A. Dotson
- Cpl. R.R. Markham
- Sgt. R.A. Zawicky

**CommSuppCo. 7th CommBn.**

**Welcome Aboard**

- LCpl. R.C. Olguin
- Cpl. B.E. Peck
- CySgt. W. Hall Jr.

**Promotions**

- PFC G.R. Zerneno
- PFC S.A. Leiske

**Letter of Appreciation**

- SSgt. A.Q. Sublan

**Certificate of Commendation**

- HM2 D.D. Gregory

**Reenlistments**

- Cpl. C.M. Anderson
- Cpl. J.H. Valenzuela
- Sgt. H.J. Alemany

**H&HS**

**Welcome Aboard**

- LCpl. R.A. Helton Jr.
- LCpl. R.L. Schwendinger
- LCpl. J.A. Young
- LCpl. Walker
- Cpl. D.L. Lennon
- Cpl. W.S. Bartkovich
- Cpl. D.L. Wamplerly
- Cpl. E.C. Anderson
- Cpl. F.E. Jones
- SSgt. R.L. Kates
- MSgt. S.R. Mead
- Capt. A.P. Fazio

**Letter of Appreciation**

- Chaplain T.E. Kennan
- Cpl. W.S. Bartkovich

**Meritorious Must**

- Cpl. L.L. Foster

**Reenlistments**

- MSgt. D.K. Kumano Jr.
- SSgt. J.L. Rushton
- Sgt. J.R. Johnson

**Force Public Affairs**

**Welcome Aboard**

- LCpl. C.R. Taylor
- LCpl. C. Beltran
- LCpl. J.G. Wiekwire
- Cpl. D.J. Edwards
- Cpl. S.M. Ballew
- Sgt. P.A. Simmons
- Sgt. D.J. Kings
- SGT. L.U. Leonard
- Sgt. L.U. Leonard
- Sgt. M.A. Edwards
- SSgt. E.M. Villeneuve
- SSgt. H. Robinson
- CySgt. P.M. Questel
- LCpl. J.P. Kiley

**Promotions**

- LCpl. C.M. Casario Jr.

**LCpl. M.A. Ferns**

- Meritorious Promotions
- Cpl. T.J. Janks
- Cpl. H.D. Spiller
- Cpl. L.L. Speights

**Meritorious Must**

- Cpl. L.L. Speights
- Good Conduct Medalist
- LCpl. C.T. Townsend
- Cpl. C.A. Plameneshk
- Cpl. C.D. Brown
- Sgt. E. Hernandez
- Sgt. W. Deshaw
- SSgt. K.R. Rooker
- SSgt. J.M. Walter
- MSgt. D.K. Terry

**Meritorious Unit Citation**

- Navy Unit Commendation
- SSgt. R.W. Coffey

**HM1-463**

- Welcome Aboard
- LCpl. S.S. Doughlass
- LCpl. P.E. Jones

## Happy Birthday BSSG-1

From initial activation as the Provisional Service Battalion on June 30, 1970 and through succeeding redesignations, Brigade Service Support Group-1 has continuously provided exceptional combat service support to the 1st Marine Amphibious Brigade. The seven companies of BSSG-1 perform a myriad of functions, ensuring the Brigade has the means to move, shoot and communicate when needed. To the officers, men and women of BSSG-1: "Happy

Birthdays on the occasion of your 16th anniversary. I am certain you will continue the tradition of excellence you have established."

*G.L. Cates*  
Brigadier General, U.S. Marine Corps  
Commanding

## Special Services

Kaneohe Bay, Hawaii

### Scuba Locker

The Scuba Locker here offers everything needed to go diving. Tanks, regulators, weights and weight belts, masks, fins and snorkels are available for rent.

Scuba classes are also held year round. Classes range from basic diving to specialties.

For more information, call 257-2548 or stop by building 238 on "D" Street.

### Station Library

Pearl Harbor which explores the question of who was really to blame for the disaster that took America by complete surprise.

Pearl Harbor was going to be attacked, and let it happen as a way of bringing America into the war. This book explores that possibility.

For more information, call the Station Library at 257-3583.

### ADOPTIONS

**DIVORCE DRUNK DRIVING**  
Reasonable rates  
**Marylyn K. Hata**  
Attorney at Law  
Ph. 521-4781

## Ticket info

**Polo Matches** - Mokuleia - through August. Tickets are \$4.  
**Hawaii Islanders Baseball** - Rainbow stadium. Seasonal book of 20 tickets is \$25, single tickets are \$1.25. Ask for a game scheduling.

**Castle Park Special** - Action pass gift certificates for \$10.95 for two people.

**Mud Race** - Aloha Stadium - July 4 at 8 p.m.; July 5 at 7:30 p.m. Tickets are \$9.70 for adults; \$6.20 for children 7-12; and 6 and under are free.

**Championship Wrestling** - Blaisdell Center - July 10. Tickets are \$12.70 ringside, \$10.70 risers, \$4.70 general admission.

For more information, call Margaret at 254-3304 or stop by bldg. 219. Hours are from 9 a.m. to 3:30 p.m. Monday through Friday.

**HOT SUMMER SALE!**  
JULY 11-17  
20% OFF ALL DIVING EQUIPMENT  
Scuba Tanks \$129.99 +  
Free Air For Life

100 for 1\*\*  
PACIFIC GUEST DRIVERS  
44-216 Kalia Rd. Honolulu, HI 96814  
347-4016

### Brooks® Assurance Jogging Shoes

**24.99**  
Reg. 34.99

### Reebok® Rhapsody Fitness Shoe

**32.99**  
Reg. 38.99

### Endicott Johnson® Softee Golf Shoe

**49.99**  
Reg. 74.99

### Putters Brass putters in assorted styles

**16.99**  
Reg. 21.99

### Weslo® 40-in. Jogging Trampoline

**29.99**  
Reg. 59.99

### Paddle Ball Game

**7.99**  
Reg. 9.99

### Hacky Sack Footbag

**6.49**  
Reg. 7.99

### Academy Dome Tent

**59.99**  
Reg. 89.99  
Three person tent with screen door & window, storm flaps & rain-fly.

### Browning® Auto-Matic Golf Set

3 Woods  
8 Irons  
**299.99**  
Reg. 600.00

**SAVE \$300.00**

### Wilson® Ultra Golf Balls

**15.99**  
Reg. 18.99

### 20% OFF Pro Golf Bags

Reg. 59.99-79.99

### Welder® Barbell/Dumbbell Set

**49.99**  
Reg. 79.99  
110 lb. set with cast iron plates, steel bars, collars.



### Igloo® 48 Qt. Ice Chest

**24.99**  
Less Mig. Rebate -4.00  
Net Cost Limit: 2 per person **20.99**



### Ninja Skateboard

**69.99**  
Reg. 89.99

### Ramp Rat Skateboard

**89.99**  
Reg. 104.99

### Fold-Out Table

**69.99**  
Reg. 79.99

### Solid Curl Bar

**21.99**  
Reg. 27.99

### Browning® Playday Golf Cart

**55.99**  
Reg. 69.99  
Easy rolling with wide track stance.

### Vitamaster® 735 Flywheel Exercise Bike

**149.99**  
Reg. 229.99

• Windward Mall  
247-8733  
Prices good thru July 8th

# HONSPORT

Division of Oahman's Sporting Goods Inc.

• Kallua  
261-9751

• Pearlridge  
487-1517

We honor VISA, MasterCard, American Express.

## Auto hobby shop gets overhauled



Lance Corporal Bryan Burns (l), and Cpl. Doug Martin work on a differential.

Story and photos  
by Cpl. Stephen Frank

The Auto Hobby Shop, here, recently moved to a new location; and with that move, it expanded its ability to better serve customers.

The new location is next to the Special Services warehouse, behind the Wood Hobby Shop. According to Van Svensson, manager of the Auto Hobby Shop, the relocation now provides a much improved working environment.

The new Auto Hobby Shop has 15 indoor bays, up from two at the old facility. It also features a complete welding shop, with gas and arc welders, plus portable units; a

complete machine shop; and an engine overhaul shop that can accommodate up to 10 separate projects.

The new shop also has a complete diagnostic center that will soon be upgraded to accommodate on board computers for every make of vehicle. There is also a paint booth that can handle big cars.

"With these new facilities, there really isn't a whole lot that we can't do here. Anyone can come in here and rebuild an entire car," said Svensson.

"We've got the room to do just about anything now," continued Svensson, "and I don't put any limits on anyone who comes here. If they've got the capabilities and the expertise to do a

project, I let them do whatever they want."

In the future, the new Auto Hobby Shop will be offering classes on engine overhauls and brake systems. "We can teach pretty much everything you need to know to work on a car," said Svensson.

The Auto Hobby Shop charges a monthly membership fee of \$30, which allows patrons to use all the facilities, with the exception of the paint booth, head blaster and engine analyzer. These facilities have separate charges.

The hours of operation are: Monday, Thursday and Friday, 11 a.m. to 8 p.m.; Saturday and Sunday, 9 a.m. to 5 p.m.; and it's closed on Tuesdays and Wednesdays.



Van Svensson, the shop manager, explains how the new tire spin balancer is used to Col. R.P. Rogers, MCAS commanding officer.



Staff Sergeant Noel Walker prepares his sports car before painting it.



Corporal Jayce Ashline (l) and LCpl. Chris Ward work on an engine.



With 15 indoor bays, the new Auto Hobby Shop also provides a variety of services and improvements.



Lance Corporal Mike Johnson removes his transmission.

# Motorcycle Safety: saves lives

According to the 1986 World Almanac and Book of Facts, motorcycles don't exist. The Almanac's motor vehicle statistics show automobiles, buses and trucks.

Trains and airplanes have their own sections; even statistics for "pedalcycles" are included in the Almanac's accident section. Unfortunately, many car drivers feel the same way — motorcycles don't exist.

Almost three-fourths of multi-vehicle motorcycle accidents are caused by the other driver. This was revealed in the University of Southern California's Motorcycle Accident Factors Study. Based on in-depth analysis of 900 motorcycle accidents between 1976 and 1978, the study also showed the most common "other driver" fault was violation of the motorcycle's right of way.

Talk to any motorcyclist about accidents or near misses — many have more than a fair share of stories about people cutting them off. When faced with this situation, a motorcyclist applies the brakes and abruptly changes the bike's course. These actions are known as "collision evasion tactics."

In the accidents USC studied, 68 percent of the motorcyclists involved used collision evasion tactics, but 76 percent of them improperly executed them. The most common error in applying

evasion tactics was improper braking, causing the motorcyclist to lose control. None of the riders who had completed a motorcycle safety course used their brakes properly.

The study showed that motorcyclists who had professional safety training were less likely to be involved in an accident. But the study also indicated that motorcycle safety courses need to provide more training in accident avoidance skills and in carrying a passenger.

Only 17 percent of the accidents studied included passengers. But nearly half of the motorcycle operators involved in these accidents had little or no experience with carrying passengers; and more than half of the passengers had little or no riding experience. Every shift in the passenger's body position affects the bike's balance, and a passenger's instinct to stay perpendicular to the road in a turn or during an emergency can lessen the operator's control of the motorcycle.

The USC study showed the "accident population" is dominated by men aged 17 to 26 with less than three years' experience on the motorcycle involved in the accident.

A motorcyclist needs to know how to react and how the bike will respond in any situation; this takes experience. But the odds are you'll probably take a fall while gaining this experience

— and you'll probably be injured. According to the USC study, motorcycle accidents result in some sort of injury to the motorcyclist 88 percent of the time.

The study also showed that helmets and proper clothing lessened the severity of injuries. Head and neck injuries made up 13 percent of all injuries suffered by those who wore helmets and 25 percent of injuries to riders without helmets.

The best material for protective clothing is leather, which is expensive and hot in the summer. The next best fabric is heavy denim or corduroy, followed by a heavy, close-woven twill.

Hard-soled shoes with heels are better than wearing running shoes, shower shoes or sandals. Motorcycle or engineer boots are the best footwear; they have hard rubber soles that grip the ground and give the motorcyclist both ankle support and protection.

As for helmets, be sure to get one that is DOT approved and fits snugly. The USC study showed that a full face helmet afforded the most protection.

Despite the hazards and the ever-increasing protective regulations, most riders will keep riding. Many people who consider motorcycling an attempt at suicide don't understand this determination to stay in the wind. For those who understand, no explanation is necessary. For

those who don't, no explanation is possible.

### Tips for nonmotorcyclists

A big part of increasing motorcyclists' safety is public awareness. As the weather gets warmer, more motorcycles will be on the roads, many operated by new riders.

Look for motorcycles. Some of the places they "hide" are in your blind spots; and, at night, motorcycles can be lost in the tail- and brakelights of vehicles in front of them.

Don't tailgate a motorcycle. If the bike goes down, you'll probably run over it before you can stop.

Bikes are entitled to their own lane. Just because motorcyclists don't occupy the entire lane does not mean they want a car to join them.

Respect a motorcycle's power. Most bikes accelerate faster than cars and most riders need more distance to stop.



### 'Rules of the road'

## Bicycle safety for kids

It's a little known fact, but bicycles are one of the most hazardous vehicles on the road today, according to the Consumer Product Safety Commission. Yet, almost all children ride bicycles.

According to the National Safety Council, over 1,000 bicycle riders died in collisions with motor vehicles in 1984, and nearly 400,000 children (aged 1-14) were treated for bicycle-related injuries in U.S. hospital emergency rooms in 1985. The AAP notes that in 75 percent of motor vehicle-bicycle accidents, the bicycle rider was responsible.

The most common cause of death is head injuries.

Serious head injuries have been reduced in other recreational activities such as football and ice hockey through the use of protective helmets. However, research indicates that helmet use among children riding bicycles is rare.

As schools let out and summer vacations start, more and more children will be outdoors bicycling.

The following guidelines are for bicycle riders:

Buy your child an appropriately sized bicycle. Oversized bicycles can be dangerous.

Restrict riding to sidewalks, paths and driveways until the child can ride confidently.

Make sure a child can stop quickly, dismount without falling, and ride in a straight line without wobbling off the path.

Teach children the basic "rules of the road:" obey all traffic signals and stop signs; ride to the right of the road, with traffic; don't ride at night; and always wear a helmet and reflective clothing.

To prevent injuries, riders should not ride double or ride a borrowed bicycle; and make sure the bicycle has both lights and reflectors. State laws require all bicycle to have a horn or bell, and reflectors on the rear, wheels, pedals and handlebars.

# 'The Bus' - Use it or lose it

Air Station residents have seen "The Bus" passing through Mokapu Gate for the last month, but more people should use it if the service is to continue.

The city bus service, here, is still on a trial basis. The route is the Lanikai-Maunawili (bus route 70) service. If the patronage increases, the shuttle's hours could be expanded.

The intervals between shuttles running through the

air station is approximately 90 minutes, and there are five runs daily. The Bus enters and exits through the Mokapu (back) Gate when it picks up an MP escort for its trip through the Air Station. The MP ensures that no unauthorized passengers get off the bus.

All bus stops on the Air Station are marked with the same signs used in the civilian community.

## Fares and schedule

### Fare structure

	One way cash fare	Monthly Bus pass
Adults	.60	\$15
Students (ages six - high school)	.25	\$7.50
Children (infant - 5 years)	.25	\$7.50
Special 'Stadium' Express	\$1.50	N/A

Infants to 5 years will ride free when accompanied by a fare-paying passenger, or a passenger with a valid bus pass. However, a child riding free shall not occupy a seat to the exclusive of a fare-paying passenger.

Exact fare in coins only must be deposited into the fare box as bus operators do not carry change.

### Transfers

Transfers are free, and are issued to fare-paying passengers upon request at the time is deposited.

### Monthly Bus passes

Monthly passes are valid for the month indicated on the pass. They are available from the 16th of the previous month until the 15th of the valid month.

Passes are available at the following locations: Foodland and Enjays stores; Oahu branches of Pioneer Federal Savings Bank; Satellite City Halls; University of Hawaii, Manoa Campus Center Ticket Desk (adult passes only); and MTL, Inc. Bus Pass Office, 725 Kapiolani Boulevard. Cash only accepted.

### Baggage rule

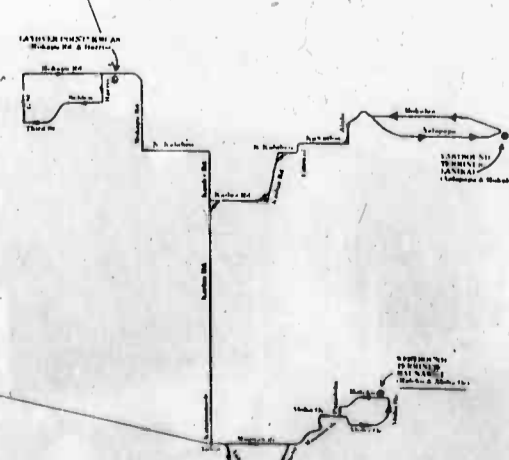
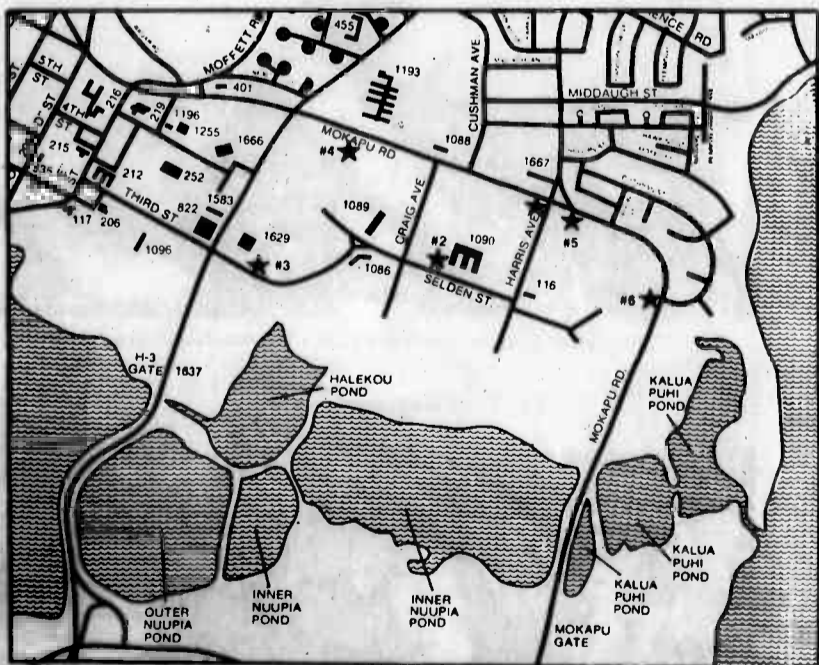
• Any personal article that can be stored under a passenger's seat or on a passenger's lap without interfering with the comfort of or endangering the safety of other passengers shall be allowed on board.

• Personal articles prohibited from being carried onto a bus shall include but not be limited to: shopping carts, backpack with metal frame, surfboard, boogie board, duffel bag, golf clubs, non-umbrella type baby strollers, or suitcases not capable of being placed under the seat or on a passenger's lap.

• All personal article allowed and carried onto the bus shall be stowed and secured under a seat or on a passenger's lap in a manner which shall assure unrestricted freedom of movement to the driver and his operation of the bus; unobstructed access to all exits by any occupant of the bus; and protection of occupants of the bus against injury resulting from falling, moving, or protruding articles transported in the bus.

• Personal articles allowed on the bus shall not be stored in the aisles or on the seats at any time.

For further information call 531-1611.



### On-Base Schedule

#1	#2	#3	#4	#5	#6
Mokapu & Harris (Bldg. 1064)	MC Exchange (Bldg. 1060)	E Club/ T1F (Bldg. 1028)	Mokapu (across from school)	Mokapu & Harris (Bldg. 1167)	Mokapu & Cochran
Bus sign	Bus stop	Bus sign	Bus stop	Bus stop	Bus sign
7:58 a.m.	8 a.m.	8:02 a.m.	8:04 a.m.	8:06 a.m.	8:07 a.m.
9:28 a.m.	9:30 a.m.	9:32 a.m.	9:45 a.m.	9:36 a.m.	9:37 a.m.
10:58 a.m.	11 a.m.	11:02 a.m.	11:04 a.m.	11:06 a.m.	11:07 a.m.
12:28 p.m.	12:30 p.m.	12:32 p.m.	12:34 p.m.	12:36 p.m.	12:37 p.m.
2 p.m.	2:02 p.m.	2:04 p.m.	2:06 p.m.	2:08 p.m.	2:09 p.m.

The bus may connect to other routes such as 54, 57 and 85. This schedule is subject to change without notice.

# Station 8 'firehouse gang' stands ready

By Cpl. Tom Worth

Morning after morning, day after day, while the Air Station gets ready for another workday, the little-known firehouse "gang" inside Station 8 stirs into action.

Some lean against the Universal weight machine, others gather around the pool table. The "B" shift file in one and two at a time, ready to relieve the other shift on their 24-hours-on, 24-hours-off schedule.

The outgoing captain takes a few moments to pass some

routine announcements to the two shifts of firefighters who are grouped together. Once finished, he shakes hands with his relief, and with that "B" shift assumes duty.

For the next 24 hours, eight firefighters man the station. They train, sharpen their skills, service the trucks, clean the station, perform quarters inspections and just wait for that "moment" to happen, away from family, not really noticed by the people they serve, the Air Station community.

They take pride in their

work. They are all civil service employees. The achievers work to move up the promotion ladder. One driver makes enough to provide for his wife and six children and pay his bills. It used to be, though, as a lower ranking firefighter, he had to work a second job added to his already disruptive schedule.

Each morning, the two drivers inspect their trucks. They get them ready; but they all know that the likelihood of being called to the raging "Big One" is slim to none. "What's wrong with that?"

one driver with 10 years experience said, about the small chance of fighting a fire bigger than a kitchen grease-smoker. "I like sleeping nights," he said.

The gang at Station 8 may never see the "Big One," but their function is nevertheless vital. They're ready. Like Marines ready for the first call to fight, the firehouse gang stands ready.

They do a lot of preventive work. Capt. R. Takahashi pushes fire prevention awareness. He schedules his "B" shift to make fire inspections of housing units. Once inside the quarters, he and his men spread their knowledge.

"What would you do if you had a grease fire on your stove," asks Firefighter Pat Allen to a homemaker during a quarters inspection. At each residence he visits, he heightens the realization that fire can be sudden, costly, often needless, and often fatal.

"You've got to watch out for overloaded extension cords," he warned one family, "it's only a matter of time before fire could start." At still another home, when taken aback by the sight of one Marine's storeroom, he said, "I would recommend that he clean this place up — very strongly. There's a lot of fuel for fire here."

But, in the just-hanging-out spirit of the firehouse gang, one firefighter reminds a Marine housewife that the information they provide are no more than suggestions. "It's only a recommendation," said Val Kukahiko. "We can't force you."

Still, families in military housing units could be held liable if a fire is traced to carelessness on the part of the sponsor, especially if the firefighters' recommenda-

tions are ignored.

Generally, the firefighters who inspect housing units and spread common sense reminders say they feel housing residents benefit from the inspections. Allen said most of the residential fires they respond to are in the kitchen. Often times, Marines' wives prevent costly damage because of the tips they learn.

"Test your smoke detector," Allen said. "Maybe sit down at dinner and discuss an emergency escape plan... like how to get out of the building and who's going to grab the baby."

Allen reminds all residents of the central emergency telephone number to be used in case of fire. He cautions families not to use the listing for the firehouse aboard the Air Station, because firefighters could be away from the phone.

"By calling 471-7117 we are dispatched through our radios," he said. "We are never away from our radios."

Even when just hanging out, the firefighters jump at the sound of their radios relying at a moment's notice on many hours of drills and experience to protect property and preserve life.



Geneva Rosoles, wife of Cpl. David Rosoles of CommSptCo., reviews emergency phone number stickers that firefighter Pat Allen (center) provides to all station housing residents during required fire inspections. Firefighter Val Kukahiko makes recommendations to residents. (USMC photo by Cpl. Tom Worth)

## Warm weather fire hazards

Warm weather brings special fire hazards. Here are a few safety tips

Never fill the gas tank on a lawn mower while it's running, hot or in a closed area such as a garage. Gas can explode without warning, causing severe burns.

Store only small quantities of flammable liquids to reduce chances of a severe fire.

Don't leave barbecue fires unattended, and do your grilling at least 10 feet away from buildings. Grilling on apartment or dormitory balconies is dangerous. Don't douse charcoal with lighter fuel once the fire has started, and make sure the coals are completely extinguished once you are finished cooking. Many a fire has started from smoldering embers.

If you have a carport or

garage, keep it neat. Store Flammables and other substances out of children's reach. And don't let young children use it as a play area.

Check with local fire officials before burning leaves or other dead plants. You may need a permit to burn leaves. Burning leaves could start a fire, especially if there has been a drought.

A year-round tip: Don't attempt to put out a grease fire with water. "Put a lid on it," is the fire safety specialist's slogan. It's best to have a frying pan with a top — use the top to smother the fire after you've turned off the burner. If you don't have a top for your frying pan, place another large, empty pot over the flames. And never pick up a burning pot — you could fan the flames or set yourself on fire.

Fire safety experts no

longer recommend dousing grease fires with baking soda — they say by the time you get enough to do any good, the fire will have spread. Using flour to douse a grease fire can result in an explosion.

If the fire seems to be getting out of hand, get yourself and everyone else out of the house and call the fire department from a neighbor's phone.

If you do suffer a minor burn, safety experts say you should never put grease or a cream ointment on it. Cool water is best. Of course, major burns, or minor burns affecting a large area, require emergency room treatment.

By Evelyn D. Harris  
American Forces  
Information Service

## Sunday Pop



**Brunch it with Champagnel**

**NEW! BRUNCH AND LUNCH MENU**

Featuring Complete Meals

Hearty portions, complete with fresh fruit, apple fritters, buttermilk biscuits, beverage, and dessert.


Choose from these favorites:

- Eggs Benedict
- Eggs Nova Scotia
- Eggs Florentine
- Steak & Eggs prepared to order
- Broiled Mahimahi Steak
- Spring Lamb Chops with Orson's special sauce.

**ORSON'S BOURBON HOUSE**

*"Kailua's Finest Seafood & Steak Restaurant/Lounge"*

Nightly Entertainment/Piano Bar  
Lunch: Mon-Fri. • Dinner Nightly  
5 Hoolai Street, Kailua  
Reservations 262-2306



## WEST OAHU COLLEGE

UNIVERSITY OF HAWAII

### WINDWARD OUTREACH PROGRAM

Orientation Meeting  
Wednesday, July 9, 1986

West Oahu College, University of Hawaii, plans to offer Windward residents a three year sequence of accelerated upper division courses in business administration beginning in fall 1986. Courses will be offered weekday evenings or weekends on the Windward Community College campus at the rate of four a semester. Students entering in fall 1986 should complete degree work in two to three years of part-time study. Program features: accelerated course work, excellent teaching and on-site academic advising. Community college degree holders and those with 45 or more college transfer credits are invited to apply.

**ORIENTATION MEETING**

The Windward Outreach Program will be explained and your questions will be answered at a community Orientation Meeting to be conducted by West Oahu College staff for prospective applicants, as follows:

DATE: Wednesday, July 9, 1986 at 6:00 pm  
LOCATION: Windward Community College Campus  
Place: Eckerdt Room 102

At the orientation, eligible students may apply for a place in the new program and complete an application form for admission into West Oahu College. Since enrollment is limited, students will be admitted on a first come, first served basis.

For more information about the Windward Outreach Program, contact West Oahu College's Student Services Office, 96-043 Ala Ike, Pearl City, HI 96782 or telephone 456-5921.

West Oahu College is accredited by the Accrediting Commission for Senior Colleges and Universities of the Western Association of Schools and Colleges.


## Marine Corps Exchange

Kaneohe Bay

presents

# 4<sup>th</sup> of July Watch Specials


**CARAVELLE**



SELECTED MEN'S AND WOMEN'S WATCHES

**\$39<sup>99</sup>** reg. \$55


**BULOVA**



LADIES DIAMOND WATCHES

**\$74<sup>99</sup>** reg. \$110

**BULOVA**



MEN'S DIVERS WATCH

**\$64<sup>99</sup>** reg. \$100

**While Supplies Last!**

This Ad Not Paid For By The Marine Corps Exchange

### Travel security

## Service members take caution

With the increased threat of terrorism, many service members traveling overseas have taken steps to protect themselves that are contrary to standard travel policy.

There have been several reports of military personnel placing identification cards and passports in their luggage and not being able to show them to airline or immigration authorities. Some service members have arrived at airline check-in counters carrying only a military identification card when a passport was required.

While the Department of Defense and the services are doing all they can to accommodate those traveling to or through high-threat areas overseas, basic travel regulations must still be followed when traveling through areas that are not considered high risk.

Department of Defense personnel must still travel on no-fee official (red) passports or on official orders with identification cards as required by the country being visited. Command-sponsored family members will continue to use the no-fee (blue) passports with an official endorsement.

However, Department of Defense personnel traveling on official orders to or from high-threat areas, or through high-risk airports by commercial air, can obtain

and use the regular fee passport for security reasons. They will be reimbursed for the passports and visas by the government.

In some cases, Department of Defense personnel may also be authorized to fly on foreign-flag airlines and use indirect routings to avoid high-risk areas. Transportation offices should be consulted for the specifics regarding those authorizations.

When travel overseas becomes necessary, the following precautions are recommended by Department of Defense antiterrorist experts to help reduce the hazards associated with potential terrorist assaults:

When making travel arrangements, leave the rank and military address off travel documents and hotel reservations. Use office symbols on orders and leave authorizations if the word description indicates a high or sensitive position.

Consider getting a seat at the rear of the plane away from potential hostile action, which usually takes place near the cockpit. Window seats offer more protection because hijackers move up and down the aisles. A seat by an emergency exit may provide escape opportunities.

Civilian clothing should be worn on all commercial flights, but it should be void of anything clearly of U.S.

origin. That would include cowboy hats and boots, belt buckles, baseball caps or clothing that carries American-product logos. Long-sleeved shirts can be used to cover visible U.S.-affiliated tattoos.

Arrive at the airport early, and don't loiter in public sections. Proceed through the security checkpoints as soon as possible to secure areas to await your flight.

Blend in with the other passengers, but don't discuss your military association with anyone. All hijackers may not reveal themselves at the same time. Sometimes hijackers leave one person secretly among the passengers to try to identify any security people who may be on the aircraft.

If you are traveling on a

tourist passport, remember that it is only a shallow attempt to hide your affiliation with the Department of Defense. Surrender your passport if asked; if directly confronted, confirm that you are with the Department of Defense. Be prepared to explain that you always travel on your personal passport and were not intentionally trying to deceive anyone.

These measures are precautionary and will help increase your awareness of the terrorist threat. But, remember, your chances of becoming a victim of terrorism are extremely remote.

By Tom Joyce  
American Forces  
Information Service

Need help?  
Call us.  
Want to help?  
Call us.



## 'No alcohol' policy enforced

Military personnel and their family members who plan on spending the weekend at Bellows Air Force Station, should be aware of changes to beach regulations, especially on the side open to civilians.

The "no drinking of alcoholic beverages on public beaches ordinance will be strictly enforced on the joint-use side by the Honolulu Police Department; violators will be cited. Picnickers and beachgoers must park in designated areas and must leave no later than 8 p.m. The only people allowed to stay in the area after 8 p.m., are those who have camping permits.

Only 50 permits for the joint-use side will be issued each week, and may be obtained at the Kailua Satellite City Hall. Each campsite will be allowed a maximum of three cars, and

the vehicles must display the parking permit and be parked at the designated camp site.

Service members and their families can use picnic areas and the beach at Bellows, but access will be tighter on weekends. Anyone wanting to enter after 8 p.m. on weekends must have a camping permit for the joint-use side; have a cabin or camping permit for the Air Force Station-side; or be going to the beach club.

Everyone will be stopped at the gate off of Kalaniana'ole Highway, and again at the gate between the Air Force Station and the joint-use beach to check for permits or ID cards.

Camping permits for Bellows may be obtained at the reservation building. Picnic areas close at sunset and swimming is not allowed after 5 p.m.

## Family Dental Care at Kaneohe Bay

Screening exams, preventive dentistry lectures and fluoride treatments for military family members will be conducted by appointment, July 12, at the Dental

Clinic, here. Preschool children will also be seen. For an appointment, call 257-3226/2290, between 2 and 9 p.m., Monday through Friday.

Sickcall: Monday-Friday (except holidays) 4 to 6 p.m.  
Care: Monday-Friday (except holidays) 6 to 9 p.m., by appointment only.  
Screening exams, preventive dentistry lectures, and fluoride treatments will still be conducted on the second Saturday of each month by appointment. Preschool children will be seen at this time.  
All questions concerning dental care will be answered Monday-Friday except holidays, 2 to 9 p.m. by calling 257-3226/2290.

**Celebrate!**

With **Rob Roy's**

**THE 4th of JULY PARADE in KAILUA...**

Parade Starts at 10:00 a.m. — So come in and have Breakfast Before the Parade Starts or Lunch after the Parade

**INDEPENDENCE DAY SPECIAL**  
"All American Lunch or Dinner"  
Fried Chicken, Corn on the Cob, Soup or Salad, Rice, Whipped Potatoes or Country Fries, Apple Pie for Dessert, and Coffee or Tea **\$5.95**  
(Plus lots more to choose)

We Will be Open All Day from 6:30 AM through 9:00 PM. Dinner Starts at 5:00 PM.

**OUR GIFT TO YOU** 1776-1986

Pay to the Order of: **OUR GUEST** 10% OFF

**TEN PERCENT DISCOUNT** On Your Meal Bill

Good 6:30 AM to 9:00 PM  
JULY 4, 1986 Only!

**Rob Roy's**

**Rob Roy's**

26 Hoolai Street 262-6992  
Open from 6:30 A.M. daily

**GRAND OPENING**

July 4th! **AMERICAN COUNTRY** July 4th!

**OLDE** **HOPE**

**COUNTRY COLLECTABLES**  
10 a.m.-5 p.m. Mon. thru Sat.  
332 Uluniu St. 262-0008

**SPA fitness center**

*We Love America!*

We're rolling back our prices to 1974 when we first opened and cutting them in half to...

**4TH OF JULY CELEBRATION!** **\$8600 PER YEAR**

**LIMITED OFFER! CALL TODAY!**

**FACILITIES & SERVICES FOR BOTH MEN & WOMEN**

- Swimming Pool
- Soothing Sauna
- Vanly Area
- Aerobics
- Life Cycles
- Steam Room
- Hydra Whirlpool
- World Wide Affiliation
- Private Showers

**4th of JULY 5 DAYS ONLY** Expires 7/9/86

<b>Kaneohe</b> 46-102 KAHUHA ST. ACROSS FROM KANEOHE DATSUM 235-6461	<b>WAIPIO</b> 94-530 UKEE ST. GENTRY BUS PARK 671-5431	<b>PEARLRIDGE</b> TIMES SQ. SHOP PLAZA AT WAIMALU 487-5551	<b>NIU VALLEY</b> NIU VALLEY SHOPPING CTR. 373-9836	<b>PUNAHOU</b> 1212 PUNAHOU ST. IN THE BANYAN TREE PLAZA 949-0026
---	---	---	---	--

BASED ON 36 MONTH NON-RENEWABLE MEMBERSHIP \$40 DOWN NEW ADULT PATRONS ONLY

<b>VIETNAM BOOTS</b> Proven durability \$25	<b>LEATHER BIKE JACKETS</b> Many styles in stock From \$99 Also BIKE GLOVES and CHAPS
<b>NEW</b> Tropical Rip-Stop Camo & Black BDU's in Stock!	<b>Every Man Needs A MECHANICS TOOL BAG</b> \$16.00 or 2 for \$30.00
<b>22 OZ. COTTON CANVAS</b> Each pack includes two size pockets, a front zipper pocket & a back zippered pocket. Each pack has adjustable heavy canvas shoulder straps and a hang loop. \$25.00	<b>3 Man Dome Tent</b> Lightweight 6 lbs. 8x7x4 ft. Was \$80.00 NOW \$49.00

**SUNBIRD TRADING COMPANY**  
1000 KANEOHE ST. WAIPIIO (Corner 22nd St. & Hwy 1)  
MONDAY-SATURDAY 10-5 SUNDAY 10-4  
671-2777

**A SOUND SALE YOU CAN'T RESIST JUST LISTEN TO THIS SPECIAL OFFER**

**KIT 1**  
#39B6444 - CASSETTE PLAYER \$37.44  
#39BDMS2 - 2 WAY SPEAKER KIT \$37.44 **\$74.88 + TAX**

**KIT 2**  
#39B6446 - CASSETTE PLAYER \$56.13 WITH AUTO REVERSE  
#39BDMS2 - 2 WAY SPEAKER KIT \$37.44 **\$93.57 + TAX**

**ALSO ON SPECIAL**  
#39BEPB100 - EQUALIZER BOOSTER \$56.19  
#39BDMS3 - 3 WAY SPEAKER KIT \$56.19

INSTALLATION EXCLUDED/GUANTITIES LIMITED  
ESTABLISHED 1983

**Schuman Carriage Company**  
LIMITED  
PARTS DEPARTMENT • PHONE 524-8571

# YMCA Events

## 'Step Families' course

Building a solid foundation for a successful step-family life will be studied in a special five-week series of classes sponsored by the Armed Services YMCA, beginning Sept. 10, on Wednesdays 7 to 9 p.m.

Some of the topics to be addressed are difficulties children face in sharing a parent and acquiring new siblings; effective step-parenting techniques dealing with guilt; "instant love," discipline and sexually issues within the step family; handling the relationship with a nonresidential parent as well as step grandparents; and focusing on the couple as a cornerstone for building a successful step-family.

To cover the costs, the course will cost \$25; space is limited.

For more information, call 254-4719 or 254-4965.

## Positive thinking seminar

A "positive thinking" seminar will be given at the Armed Services YMCA Outreach, Aug. 6, 9 to 11 a.m.

Methods to better fulfill your potential and to change

negative thinking and reactions to positive ones will be target. Childcare and transportation is available.

For more information, call 254-4719/4965.

## Giant swap meet

A "giant swap meet" will be held, Aug. 15, 9 a.m. to 2 p.m., in the courtyard behind the 7-Day Store. If you've been fall cleaning or moving, you can sell items you don't need anymore.

Sellers must be cleared through the Armed Services YMCA. Registration and seller's fee is \$1 and is required by Aug. 12. Serviceable toys, clothes, household items, crafts and baked goods can be sold. Space is limited and will be given on a first-come, first-served basis.

For more information, call 254-4965/4719.

## Women's awareness program

The Armed Services YMCA Outreach sponsors a women's awareness program each Wednesday, 9 to 11 a.m., at the Air Station. This month the YMCA will hold seminars and tours on:

**Ribbon origami.** Learn how to make a beautiful mobile, July 9, using the art of ribbon origami. A \$2.25 fee is required and includes all supplies except scissors.

**Lyon Arboretum tour and workshop.** The YMCA is sponsoring a walking tour of botanical gardens in Manoa Valley and a mini-workshop demonstrating the making of an exotic fruit dessert, July 16. Long pants comfortable walking shoes and an umbrella are suggested. Bring a brown bag lunch; beverages will be provided. The fee is \$2.50 and child care is available for \$3 per child. Their lunch must be provided by the parent. The van leaves the ASYMCA parking lot at 8:30 a.m., and will return at 2 p.m. Space is limited.

**Tips on meat buying and preparation.** A lecture and demonstration, July 23, at the Commissary, here, teaches what to look for when buying meat and how to prepare certain meats. Topics will include cutting up meat and a whole chicken, and some inexpensive recipes.

How to talk to kids

**about sex.** A discussion on the sexuality of young children, which teaches parents how to educate children about sex as well as how to develop communication with children about it, will be held, July 30.

**Boat cruise.** A three-hour boat tour of Pearl Harbor, Diamond Head and Waikiki will be held in September. Demonstrations of coconut hat weaving and lei making will be given, and entertainment by a Hawaiian musical group will be provided on the tour. The cruise costs \$6.50; a packed lunch is necessary for a picnic at Ala Moana Park after the cruise.

**Idea Box.** The station Armed Services YMCA Outreach would like your input and suggestions for new programs. They should be in writing and placed in the new, pink idea box at ASYMCA.

## FITNESS TIPS

### YOUR MUSCLES

**BUILD UP YOUR MUSCLES**  
As a general rule, gains in muscle strength are made by lifting heavy weights a limited number of repetitions. Gains in muscular endurance involve lifting lighter weights numerous repetitions.

**STRONG YET FLEXIBLE**  
The idea that heavy muscular development inhibits movement is false. Studies show that strength training speeds up reaction time, and with stretching exercises does not lessen flexibility.



**FAT OR MUSCLE?**  
Exercise does not convert fat to muscle. The right combination of exercise reduces fat tissue while building muscle tissue. Since muscle is heavier than fat, you may reduce body measurements without reducing body weight.



FROM THE PRESIDENT'S COUNCIL ON PHYSICAL FITNESS AND SPORTS

**V.W. Performance!**  
RMR ASSOC.  
**QUALITY HIGH Performance Parts**

Cam Shafts • Dial A Gear • Big Valve Heads • Oil Systems • Fuel Systems • Mikuni Carburetor Systems • Exhaust & Ignition Systems • Header • Lazeritz • GTI Engine Kits 90 & 100 HP • Suspension Systems • Bilstein Shocks • Boge Turbo • Sacks Sport Sets

Specializing in the Euro look for Rabbit, Scirocco, Golf, GTI, Jetta & Bugs

Carburetors & Suspension Systems for Toyotas & Datsuns

725 Kailua Road At Windward VW **262-6576**

**ARRESTED FOR DRUNK DRIVING?**

CALL **NOAH D. FIDDLER**  
Attorney at Law

**Free Consultation**  
**545-7400**  
820 Miliiani St.  
HK Bldg. Ste. #612

**261-3233**  
415 A. Uluniu St.  
Kailua

**Neck Pain? Backache?**  
Don't Suffer Needlessly!

**Pacific Chiropractic**

TRAINED IN 5 RECOGNIZED TECHNIQUES INCLUDING "LOW FORCE"

COMPLETE PHYSICAL EXAM  
X-RAY FACILITIES

**DR. JEANNE MICHAELS**  
R.N. D.C.

602 KAILUA RD. NO. 207, KAILUA  
(between Cornet & Hardware Hawaii-2nd floor rear)  
**NO CHARGE FOR BRIEF SPINAL ANALYSIS**

261-0831

**Three ways to enjoy Hawaii more.**

Tama's Polynesian Revue graces the Hale Koa's Banyan Tree Showroom three times a week, with a different show each night. There's no better time or place to enjoy all the excitement and splendor of the South Pacific: pulsating drumbeats, soft Hawaiian hulas, and mesmerizing music.

Tickets are just \$13.95 (\$6.50 for children under 12) and include a bountiful buffet dinner featuring Polynesian and Oriental specialties, the show, and your gratuity. Get yours now at the Hotel Activities Desk or at the Kaneohe MCAS Special Services Office.

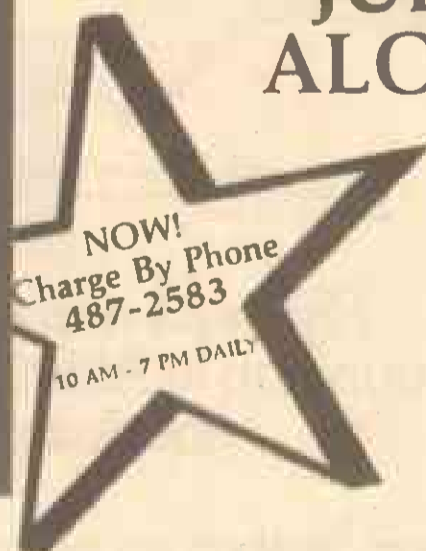
**TAMA'S POLYNESIAN REVUE**  
Wednesday, Friday and Sunday  
Banyan Tree Showroom  
Dinner from 6:00 to 7:30 p.m.; show at 8:00 p.m.

**HALE KOA HOTEL**  
Armed Forces Recreation Center, 2055 Kalia Road  
Honolulu, HI 96815-1998 / Telephone: (808) 955-0555

AT&T is proud to present the Event of the Decade



**Sinatra**  
IN CONCERT  
**SATURDAY**  
**JULY 26 8 P.M.**  
**ALOHA STADIUM**



**Now On Sale!**

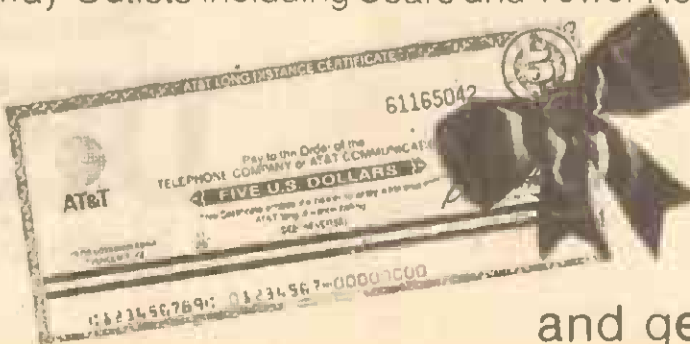
To experience this once-in-a-lifetime evening, purchase one or more Gift Packs of **The People Present** — AT&T Long Distance Gift Certificates — and receive

**FREE CONCERT TICKET(S)**

The certificates are as good as cash for payment of AT&T Long Distance calls a great way to keep in touch with faraway family and friends

Get your Gift Packs and FREE SINATRA TICKETS at Aloha Stadium Box Office and All Funway Outlets including Sears and Tower Records.

**The People Present**



Buy Gift Packs worth \$25, \$50 or \$75 and get free concert tickets!

# Sports Shorts

## 1st MAB 10K for Navy Relief

The first 1st MAB 10K Run for Navy Relief will be held July 25, at 6 a.m., on a course similar to the Marine Corps Birthday Run.

The entry fee is \$5. The run is open to all active duty personnel, their family members, and DoD employees. The entire fee is going to Navy Relief.

Also available are T-shirts in a variety of colors and sizes for \$5 each. Registration begins July 1.

Call Capt. John Rattick at 257-3214, for information.

country run each September. Women interested in competing in this event, or any of the other runs held weekly on island, are urged to call SSgt. Kathy Creswell at 257-3250/3290.

## Women's Volleyball League

A women's dependent volleyball league is being formed with the first game slated for Sept. 6.

For registration and more information, contact Jeanie at 247-8424 or Phyllis at 235-4033.

Windward Enlisted Club, with the first bout starting at 5 p.m. Participants can preregister at the Station Gym.

## All-Marine Tennis

The 1986 Hawaii Marine Athletic Council Tennis Championships will be conducted July 12-13 at the lower tennis courts here.

Matches start at 9 a.m., on July 12 and noon on July 13. This is the first step for qualifying for the All-Marine tennis trials to be held Aug. 30 through Sept. 14 at MCRD San Diego.

Superior tennis players should register at the Station Gym, 10 a.m. to 5 p.m., weekdays. Divisions are Seniors, over 40; Junior vets, 35-40; open and women's. Camp Smith and Marine Barracks personnel are eligible to compete.

## Youth Football

Youth football registration for youth 6 to 17 years old are being conducted on a first-come, first-served basis at the Dependent Recreation Center, building 1319, from 1 to 4 p.m., Monday-Friday.

Last day of registration is July 25.

All applicants must be accompanied by a parent or guardian. A military I.D. card or a birth certificate is required.

For more information, call 254-2963.

## Coaches needed

Individuals interested in coaching a youth football team should contact Mark at

257-3550/3622. Training will be provided to coaches of all levels.

## Gym Courts to close

The Station Gym racquetball and basketball courts will be closed starting July 15 for approximately six weeks so they can be refinished. The racquetball tournament and volleyball seasons are delayed until further notice.

## Women 10K Runners

The Hawaii Marines field a five women team in the Hawaiian Armed Services Athletic Council 10K cross

## Boxing Smoker date change

The semiannual "Friday Night at the Fights" smoker will be held July 18 at the

## Religious services

**MCAS Kaneohe Bay**  
257-3553

**Weekdays**  
11:45 a.m. — Catholic Mass

**Saturdays**  
6 p.m. — Catholic Mass  
7 p.m. — Catholic Confession Reconciliation

**Sunday**  
7:30 a.m. — Catholic Mass  
8:30 a.m. — Protestant Communion  
9:30 a.m. — Protestant Sunday School  
9:30 a.m. — Catholic Mass  
10:45 a.m. — Catholic CCD Classes  
11 a.m. — Protestant Worship  
1 p.m. — Samoan Congregation  
The Station Chapel is located in the right rear corner of the Marine Corps Exchange, building 1090. Sunday Schools and CCD are held in the pre-school area, building 1391.

**Camp H.M. Smith**  
477-5098

**Sunday**  
8 a.m. — Catholic Mass  
9:30 a.m. — Protestant Worship  
9:30 a.m. — Protestant Sunday School

**Monday**  
11:30 a.m. — Bible Study

**Wednesday**  
6:45 — Prayer breakfast  
7 p.m. — Choir rehearsal

**Friday**  
11:30 a.m. — Catholic Mass

**Aloha Jewish Chapel Pearl Harbor**  
471-0050

8 p.m. — Shabat  
**Saturday**  
9:30 a.m. — Shabat and Torah Study

**KATHLEEN L. DURANTE, M.D.**

COMPREHENSIVE CARE FOR  
INFANTS, CHILDREN, ADOLESCENTS  
HMSA/CHAMPUS Participant

263-6623

Kailua Professional Bldg. I

After Hours:  
988-2188

30 Aulike St.  
Kailua, Hawaii

Suite #201  
Kailua Prof. Bldg. I

*Just Sheppard Asset's*

# Jazzercise

**FREE JAZZERCISE FOR TWO. OR TWO TRIPS JUST FOR YOU.**

Honolulu Area	
Downtown	262-6116
Kaimuki	261-2007
Waikiki	625-0684
Hawaii Kai	261-3098
	261-9590
Windward Area	
Kaneohe	262-6116
Kailua	261-3098
	262-6116
Leeward Area	
Aiea	671-8109
Milliani	625-0684
	625-0684
Airport	671-8109
Pearl Harbor	261-3098

\*Babysitting Available  
For More Information, Please Call: Debbie Schmidt, Area Manager, 261-2007

Hawaii Residents Only With Registration For 8 Classes  
OFFER EXPIRES AUG. 1986

# DELTA GETS YOU THERE.

## OVER 100 MAJOR CITIES, THE EASY WAY.



**Fly Delta nonstop to Dallas/Ft. Worth, nonstop to Atlanta. Make fast connections for dozens of other cities.**

**Fly nonstop to Dallas/Ft. Worth any evening for arrival the next morning.**

**Our nonstop to Atlanta leaves every evening. You arrive in Atlanta the next morning.**

**Save with Delta's discount fares.** Be sure to ask about our big discounts off regular Day Tourist Fares. Discount fare seats are limited and there are

special requirements; reserve early. We also have Military Fares that save you 25%. No restrictions — leave on any flight that has available space.

**Check your on-base SATO (Scheduled Airline Ticket Office).** See your professional Travel Agent. Or call Delta. Schedules are from Honolulu and subject to change without notice.



**SAN DIEGO BOUND?**

Interested in Buying a Home?

**FREE Relocation Brochure**

**JOAN KIDDER**  
Multi-Million Dollar Producer

**Corky McMillin Realty**

Call Toll Free  
1-800-525-8910 ext. 9961

See how Sylvan can guarantee results you never thought possible.

- Complete diagnostic testing.
- Individual instruction in reading and math.
- Positive reinforcement and rewards for success.
- College prep, algebra programs and more.

For more information, call  
**Sylvan Learning Center.**

**KAILUA** 629 Kailua Blvd #208  
Kailua, Hawaii 96734  
263-6656

**KAHALA** Kahala Professional Bldg  
4747 Kihuna Ave.  
Suite 103-105  
Honolulu, Hawaii 96816  
735-8811

**Sylvan Learning Center**  
Because success begins with the basics.



# Movie schedule

Admit One

**Family Theater**  
7:15 p.m. Nightly  
257-3668

happened 13 years ago. He organizes a rematch with all the old players and redeems himself with the winning touchdown.

**Monday**  
Surprise film classic.

**Today and Tomorrow**

**The Best of Times (PG-13)**. Robin Williams and Kurt Russell. Comedy. An ex-high school football player blames himself for a disastrous defeat during a big rivals game that

**Saturday and Sunday**

**Jagged Edge (R)**. Glenn Close and Jeff Bridges. Drama. A newspaper publisher's wife is brutally murdered, and he is targeted as a suspect. He hires a defense attorney to outfox the DA.

**Tuesday and Wednesday**

**The Trip to Bountiful (PG)**. Geraldine Page. Drama. The town of Bountiful has long since been abandoned and wild grass has replaced fertile fields and the fruit of pecan trees lies rotting.

# What's cooking



**Today**

**Lunch**  
Creamed of mushrooms, Shrimp Curry, Cantonese spare ribs

**Dinner**  
Apple-glazed corned beef, grilled cheese sandwich

**Friday**

**Breakfast**  
Baked sausage patties, pancakes

**Lunch**  
Hamburger pie, deep-fried cod filets,

**Dinner**  
Meat loaf, grilled ham steaks

**Saturday**

**Brunch**  
Grilled minute steak, minced beef

**Dinner**  
Steamship round of beef, breaded port slices

**Sunday**

**Brunch**  
Grilled sausage patties, creamed beef,

**Dinner**  
Grilled steak-to-order, Newport fried chicken

**Monday**

**Breakfast**  
Roast beef hash, cinnamon French



**Lavoptik**  
EYE WASH

AT PAY 'N SAVE

**KAILUA ASSEMBLY OF GOD**

A SPIRIT FILLED COMMUNITY CHURCH READY & WAITING TO MEET YOUR NEEDS.

**ASSEMBLY OF GOD AG**

**SUNDAY SERVICES**  
9:00 A.M. Sunday School  
10:15 A.M. Morning Worship  
7:00 A.M. Evening Worship

201 N. KAINALU DRIVE

Home of Kailua Church Christian School Grades Pre-K thru 12  
Pastor Ray Shurance invites you to stop by. PH: 261-4641

**\$38 A Room and Car For Two**

From

**KAUAI SANDS** from \$48    **KONA HUKILAU** from \$38  
**MAUI HUKILAU** \$49    **KONA SEASIDE** \$48  
**MAUI SEASIDE** \$55    **HILO HUKILAU** \$38

Includes standard room on or by ocean, a 1986 Budget auto compact, free mileage. Most rooms have color TV, refrigerator, ceiling fan, A/C, phone, pool, dining room, free ice, free parking. Hawaii's largest room and car operator.

**ROOMS ONLY from: \$28 single or double.**

See your travel agent or call:  
**Sand & Seaside Hukilau Hotels 922-1228**  
or **Aloha Airlines 836-1111**

# CLASSIFIED

**Counter Service** 46-016 Alaloe Street Kaneohe Mon.-Fri. 8 a.m.-5 p.m.  
**Telephone Service** 235-5881 or 235-7535 Mon.-Fri. 8 a.m.-5 p.m.

Important Information: Please check your ad on the first day and bring any error to the attention of Classified immediately. RFD Publications assumes responsibility for errors in copy for the first insertion only. Any adjustments or credit will not exceed the value of the ad. The Publisher assumes no further liability and the advertiser expressly waives any and all claims of consequential damages due to errors. RFD Publications cannot assume responsibility for the claims or performance of advertisers.

## INDEX

### ANNOUNCEMENTS - SERVICES

- Announcements.....15
- Card of Thanks.....8
- Cemetery Plots.....10
- Free Bee.....0
- Home Services.....31
- Legal Notices.....1
- Lost & Found.....20
- Money Loaned/Wanted.....55
- Moving/Storage.....123
- Personals.....25
- Personal Services.....35

### AUTOMOTIVE

- Auto Announcements.....173
- Auto Leasing.....172
- Auto Service/Parts.....156
- Autos Wanted.....161
- Automobiles for Sale.....176
- Motorcycles, Mopeds & Scooters.....171
- Pickups, Trucks.....166
- Vans, Campers.....175
- Jeeps, 4WD.....175

### BUSINESS OPPORTUNITIES

- Business Opportunity.....50
- Restaurants, Bars.....118

### JOB OPPORTUNITIES

- Domestic Help Wanted.....62
- Help Wanted.....60
- Male/Female.....60
- Resumes.....36
- Schools & Instructions.....58

### JOBS WANTED

- Domestic Jobs Wanted.....64
- Jobs Wanted.....63

### MERCHANDISE

- Antiques-Art.....130
- Bicycle Sales & Service.....131
- Boats-Supplies/Service.....146
- Garage/Land Sale.....128
- Home Appliances.....125
- Home Furnishings.....120
- Livestock & Horses.....150
- Machinery & Equipment.....153
- Miscellaneous.....126
- Wanted.....127
- Musical Instruments.....144
- Pets-Everything.....151
- Photography.....140
- Sporting Goods.....147
- Stereo, Video & Television.....129
- Swap & Exchanges.....128

### REAL ESTATE

- Condos/Townhouse For Sale.....109
- Income Property.....113
- Property Management.....112
- Real Estate Announcements.....115
- Real Estate Loans.....119
- Real Estate for Sale.....114
- Real Estate for Trade.....117
- Real Estate Wanted.....116

### RENTALS

- Apts Furnished.....73
- Apts Partly Furnished.....75
- Apts Unfurnished.....74
- Condos/Townhouses Furnished.....86
- Condos/Townhouses Partly Furnished.....85
- Condos/Townhouses Unfurnished.....87
- Houses Furnished.....81
- Houses Partly Furnished.....83
- Houses Unfurnished.....82
- Housesitting.....84
- Rentals to Share.....76
- Rentals Wanted.....98
- Rooms for Rent.....98
- Short Term Rentals.....94
- Stores & Offices for Rent.....103
- Vacation Rentals.....93

### 0 Free Bee

FREE: Golden Retriever, 6 mos. old, needs a good home. 734-2413, 533-6606

FREE: kittens-healthy, housebroken. To good home. 239-5675

FREE: 2 dogs-1 black lab & 1 German Shepherd/Lab. Call 499-1755

FREE: very affectionate Persian mix w/ cat, has shots. 254-1418 evas. & wknds.

FREE: White male full blooded German Shepherd good w/kids. 423-2612

Your ad is FREE if you're giving away something! Published on space available basis. Just call 235-5881 (except Mon. and Tuesdays).

FREE: loveable cal. spayed, had shots, housebroken, 1 yr PH: 261-5141

FREE: Puppy, mixed shepherd, 4 mos. all shots. Good w/kids, housebroken. 672-8726

FREE: 2 kittens 1 tortoise shell & 1 black. Call Eileen 531-6211 ext. 26.

FREE: Two adorable sister tiger kittens. Need permanent inside home. 696-6826

1 Legal Notices

**RAYMOND MUNOZ, ATTORNEY**

REASONABLE PRICES! LEGAL SERVICES EMPHASIS ON ADOPTION GUARDIANSHIP DIVORCE, WILLS PERSONAL INJURY SPANISH SPOKEN SE ABLA ESPANOL

1360 BISHOP TOWER 1001 BISHOP STREET TELEPHONE 526-0503

0 Free Bee

FOUND Girl's Hawaiian ring. Sat., June 21 at Kehala Beach. Call Phyllis 737-3151 or 944-6341/42

FOUND Young male cal. gray and white, Crown Terrace 2, 6/21 235-2709

25 Personals

It's easy to charge it. Visa/MasterCard pays for Sun Press Classified. 235-7535 or 235-5881

THANKS ST. JUDE

0 Holy St. Jude Apostle & Martyr, great in virtue & rich in miracles, near kinsman of Jesus Christ, faithful intercessor of all who invoke your special patronage in time of need, to you I have recourse from the depth of my heart & humbly beg you whom God has given such great power to come to my assistance. Help me in my present urgent petition to return I promise to make your name known & your cause known. Say 3 Our Fathers, 3 Hail Marys & 3 Glories. Publication must be promised. St. Jude pray for us all-NO invoke your aid Amen. This Novena must be said for 9 consecutive days & has never been known to fail. C.C.



Time for headaches, ulcers, short tempers. All the signs of back to school symptoms. Let us help you take some pain out of registration with our successful back to school editions.

## FALL BACK TO SCHOOL TABLOIDS

	TABLOID 1st EDITION	TABLOID 2nd EDITION
Publication Dates:	July 24	August 7
Space Deadline:	July 18	July 30
Camera Ready:	July 18	August 1
*Editorial Deadline:	July 16	July 30

**RATE:**  
\$16.18 p.c.i. 1st run (4" min.)  
\$15.69 p.c.i. 2nd pickup run (4" min.)

With each 10 inch or more space reservation accepting for consideration for publication typewritten double spaced page of editorial copy with black/white photograph. We reserve the right and keep all materials received.

**Sun Press** CALL TODAY!  
Phone 235-5881

Publishers of Hawaii Marine, Hawaii Navy News, Sun-Flyer & Sun Press Newspapers

**0 Free Bee**

FREE: kittens, white both males, 9 wks. 254-2654

**15 Announcements**

**LOCAL HOUSEHOLD MOVING**

Let us move the heavy items. Time starts at your door or piece rate quoted

**S&S DELIVERY**

Expert piano moving. 833-1857 or 395-7295

**20 Lost & Found**

FREE: 2 indoor kittens. Must go together to good home. Litter trained. 696-8503

**0 Free Bee**

FREE: Golden Retriever, 6 mos. old, needs a good home. 734-2413, 533-6606

**0 Free Bee**

FREE: kittens-healthy, housebroken. To good home. 239-5675

**0 Free Bee**

FREE: 2 dogs-1 black lab & 1 German Shepherd/Lab. Call 499-1755

**0 Free Bee**

FREE: very affectionate Persian mix w/ cat, has shots. 254-1418 evas. & wknds.

**0 Free Bee**

FREE: White male full blooded German Shepherd good w/kids. 423-2612

**1 Legal Notices**

**RAYMOND MUNOZ, ATTORNEY**

REASONABLE PRICES! LEGAL SERVICES EMPHASIS ON ADOPTION GUARDIANSHIP DIVORCE, WILLS PERSONAL INJURY SPANISH SPOKEN SE ABLA ESPANOL

1360 BISHOP TOWER 1001 BISHOP STREET TELEPHONE 526-0503

**0 Free Bee**

FOUND Girl's Hawaiian ring. Sat., June 21 at Kehala Beach. Call Phyllis 737-3151 or 944-6341/42

**0 Free Bee**

FOUND Young male cal. gray and white, Crown Terrace 2, 6/21 235-2709

**25 Personals**

It's easy to charge it. Visa/MasterCard pays for Sun Press Classified. 235-7535 or 235-5881

**A FIT & HEALTHY YOU**

Call on these specialists devoted to your well being TO ADVERTISE IN THE HEALTH & FITNESS DIRECTORY CALL 235-7535 or 235-5881 We Accept VISA and MASTERCARD

**Aerobic Classes**

**Sports Massage**

**BODY By Janis, Exercise Classes, Free Babysitting, Kailua. 947-2182**

**OUTCALL SHIATSU On table \$23. Mats. 4-9, Sun 11-6. MAT 1780. Lique Message - Fuji's 734-1720**

**MUSICAL INSTRUMENT SALES**

Easy Music Center is in search of two self-motivated individuals with musical instrument sales experience. Self-disciplined, desire and perseverance are essential qualities. Some heavy lifting required. If you fit these requirements, apply Monday-Thursday 8:30-11:00 a.m.

**Servco Pacific Inc.**

89 South King St., 4th Floor  
Equal Opportunity Employer

**HOMEOWNERS - CONSTRUCTION BLUES?**

Like To Remodel? Don't Know How To Start? Need Plans & Permits?

**NO PROBLEM!**

Call **ADDWAY CONSTRUCTION & ENGINEERING INC.**  
Ph: 942-3786 or 834-7633  
**WE'LL HELP . . .**  
(we can assist with financing)

**INCENTIVE AUTO LEASING**

- Now Interviewing •Part time/Full time.
- Auto Lease Consultants.
- No Experience Necessary.

We train - No Investment - Earn 10  
**\$5,000 per month**  
Call **845-2226**  
Mr. Roberts for appointment

# FISHER

**4th of JULY Sale** SALE ENDS 7/6/86

**FVH-904**

**VHS VIDEO CASSETTE RECORDER**

- Up to 8 hours of recording and playback with a single T-160 cassette
- 111-channel cable-ready tuner
- 14-day/4-event programmable timer with everyday function
- QTR (Quick Timer Recording) up to 4 hours
- Cue and review special playback modes
- DTS (Digital-Synthesizer Tuning System) for programming
- 13-function/10-button infrared remote control

**\$269.00** reg. \$339.00

**FVH 839**

**Hi-Fi STEREO VIDEO RECORDER with STEREO RECORDER**

- Up to 8 hours recording and playback (T-160 cassette)
- 140-channel cable-ready quartz PLL digital synthesizer tuner with direct access channel selection
- 4 video heads and 2 AFM Hi-Fi heads
- 6 special effect playback modes in both, SP and EP speeds
- APS (Automatic Program Search) system
- 4-hour QTR (Quick-Timer Recording)
- MTS (Multichannel TV Sound) circuitry for recording or recording stereo, bilingual or S.A.P. (Second Audio Program) broadcasts
- Audio level and balance controls
- 23 button/15 function wireless infrared remote control

**\$529.00** reg. \$635.00

**FREE**

**Video Club Membership** from HOME VIDEO with purchase of advertised video cassette recorders While supply lasts

**Marine Corps Exchange**  
Kaneohe Bay  
This Ad Not Paid For By Marine Corps Exchange

**CLASSIFIED**

It's the biggest discount store in town!

**235-5881**

**BEND**

your minds and wills to the education of the peoples and kindreds of the earth, that haply the dissensions that divide it may be blotted out . . . Baha'i writings. Join us every Wed. 8 P.M. "The New World Video" . . . 191 Kuulei Rd. Kailua. Ph. 239-6852 (Information)

\$400 CASH loan-anybody. No collateral, personal, fast approval. Employment needed (Burglar alarm rebate loan). 526-3766



# Christmas IN JULY

## AUTO SPECIALS

- '80 HONDA CIVIC 1500 GL  
6 spd., radial tires, metallic red in color. 100% Financing OAC. FIRST TIME OFFERED.  
#MJAB23  
**\$2995**
- '81 CONCORD WGN  
THE SHELLEY SLEEPER SALE. Auto, p/s, gorgeous inside & out. If You Call Us, It's Too Late - COME ON DOWN TODAY. #HFB23  
**\$2195**
- '79 SUPRA L/B  
6 spd., air, radio, p/s, p/w. GORGEOUS INSIDE & OUT. 1st. Time Offered. #BSF817  
**\$3995**
- '84 SENTRA 4 DR.  
Auto, factory air, WELL MAINTAINED inside & out. PERFECT 2nd. Car. #HRT806  
**\$3995**
- '82 DATSUN P/U  
Std. NEW custom paint, radio. FREE SHIPMENT to outer islands. A Going Machine That's Got To Go This Weekend. #AVY514  
**\$2995**
- '79 VW CONV'T  
FUN IN THE SUN. 4 spd., radio. \$2000 Price Reduction! PRICED FOR IMMEDIATE SALE. Financing in 10 min. #COSP1  
**\$3995**
- '81 MAZDA 626 LX  
2 dr. & 6 spd., v/c, gorgeous inside & out. Priced for IMMEDIATE SALE. DON'T DELAY here.  
#BFR377  
**\$3333**
- '81 CORVETTE  
Glass T-tops, alloys, p/s, AM/FM stereo, auto. air, blue w/blue int. SHOWROOM CONDITION.  
#BBV188  
**\$11,995**
- '84 Z28  
Brown w/brown cloth int., Overhead Pkg., auto. AM/FM stereo, air, p/w, p/l, rear wiper.  
#HBJ826  
**\$10,225**

# SHELLY CARS

836-0466 "Friends of the Family" OPEN 'TIL 9 P.M. Corner Nimitz & Lagoon

# CONSTRUCTION SALE

- Models may not be exactly as shown
- 1986 MONTE CARLO SPORT COUPE  
2 dr., AT, PS, PB, etc. \$755  
**\$10,488**
  - 1986 CAMARO Z-28 IROC  
V6, 5 spd., loaded including 1 top. #933  
**\$15,988**
  - 1986 MAZDA 626 LX  
5 speed, 2 dr., loaded. \$204  
**\$12,299**
  - 1986 MAZDA GLC WAGON  
5 spd., plus lots more! \$371  
**\$6,688**
  - 1985 CHEVY S-10 4x4 BLAZER  
5 spd., loaded w/extras, retail \$18,339.50 LT5457  
**\$13,888**
  - 1986 CHEVY ASTRO 7 PASS. VAN  
6 cyl., AT, PS, AC, retail \$15,919.50 LT6013  
**\$13,988**
  - 1986 S-10 EXTENDED CAB PUP  
6 cyl., AT, PS, & much more, retail \$14,698.50. LT6067  
**\$6,888**
  - '83 Nissan Sentra  
4 dr., AT, ac, PS, AW2238  
**\$4,988**
  - '83 Grand Prix  
5 spd., AT, ac, loaded. #DUR907  
**\$5,388**
  - '83 Camaro Z-28  
V6, AT, ac, loaded. #21012  
**\$9,988**
  - '79 RX-7 Coupe  
1 spd., air, AM/FM stereo, #BY0365  
**\$5,588**
  - '80 Buick Regal  
V6, AT, ac, #X2914  
**\$3,988**
  - '82 VW Scirocco  
5 spd., AM/FM stereo, #ALU882  
**\$4,988**
  - '83 Dodge Omni H/B  
4 dr., AT, PS, AM/FM stereo  
**\$3,988**
  - '85 Mazda 626 LX  
V6, 5 spd., loaded. #Y0551  
**\$9,888**
  - '85 Honda Civic H/B  
V6, 4 spd., AM/FM stereo, #AD0579  
**\$5,988**
  - '84 S-10 4x4 PUP  
V6, AT, PS, AC, #DU253  
**\$6,988**
  - '84 Bronco II 4x4  
6 cyl., 1 spd., PS, COM191  
**\$8,988**
  - '79 K Blazer 4x4  
V6, 4 spd., low miles. #AD0552  
**\$6,888**
  - '85 Astro Van  
Cargo van, AT, PS, #CE238  
**\$8,988**
  - '79 G10 Cargo Van  
6 cyl., standard, PS, #HW789  
**\$3,588**
- All Cars Subject to Prior Sale  
Prices Plus Tax & Licenses

# JN CHEVROLET MAZDA

2999 N. NIMITZ HWY. One Block Ewa of Lagoon Drive **836-1222**

### MILITARY DISCOUNT

# \$450 R/T EAST COAST

Includes Midwest, Mexico, Canada, Caribbean

## EUROPE BIG DISCOUNTS TRAVEL MART

373-9824 (TA802)

### CASH REBATE

We'll give 10% cash back to you for your insurance claim on body and paint work.

## AUTO BODY & PAINT SPECIALISTS

CALL 456-2144 ASK FOR VINCE  
96-1345 Wahioua, Bay 4  
Satisfaction Guaranteed \* Free Estimate \* All Insurances Accepted

FREE Window Tinting or Body Side Molding & Pinstriping (w/Complete Body & Paint Job)

WE'RE PRICED RIGHT!

- \* INSURANCE CLAIMS
- \* RUST REPAIR
- \* BODY WORK
- \* GLASS TINTING
- \* COLOR MATCH
- \* STRIPING
- \* COMPLETE PAINT JOB
- \* 5 YEAR PAINT SEALANT
- \* BODY SIDE MOLDING
- \* AUTO FABRIC SEALANT
- \* CUSTOM PAINTING
- \* RUSTPROOFING

- 93 Vacation Rentals
- 114 Real Estate for Sale
- KAILUA Lge. cottage one block from beach, furn., \$30/day & up. Wkly. & mo. rates. 262-0025
- KAILUA vacation rentals, near beach. Call 261-5174
- LANIKAI (Kailua) nr. beach, esp. nice, 1 or 2 bdrm. garden apt., TV, priv. 262-5445
- KAILUA across from beach. Studio, \$35 daily. 261-3691

### 120 Home Furnishings

WATERBED Renewed/ Guaranteed. Any size includes headboard. \$150. Aquawood Alea Shopping Center. Ph. 486-3288

RATTAN - Beautiful 5 pc. living rm. set \$495. Rattan dining set \$275. All new. Call 734-1554

WATERBED with bookcase headboard, heater. New, still boxed. \$250. 821-9068

SOFA white velour copper/silver pattern, 7 pillow back \$350. Call 395-4621

QUEEN size hide-a-bed, plaid design. \$200. Call 623-0436

DARK BROWN naugahyde love seat, sofa & chr. w/ottoman, excl. cond. \$300. 395-7765

- 98 Rentals Wanted
- It's easy to charge it. Visa/MasterCard pays for Sun Press Classified. 235-7535 or 235-5881
- QUIET working couple w/1 child need 2-3 bdrm. house. Kailua-Kaneohe. Up to \$750 month. 262-4222
- KANISAI GAIDAI HAWAII COLLEGE seeks room rentals for English-speaking Japanese students, male & female from Sept. 1 (up to 1 yr.). HONOLULU AREA ONLY - 3 Options: 1. Lodging only (\$200-\$300 mo.), 2. Lodging w/meals (\$250-\$380 mo.), 3. Host-family arrangement incl. rm./bd. & participation in family act. (\$250-\$380 mo.) Call Mrs. Fleischer, 377-5402

### AIRLINE COUPONS

USA/CARIBBEAN/MEXICO

## COACH SPECIAL \$399 R/T

### TRAVEL DISCOUNTS INTERNATIONAL

Serving Hawaii Since 1979

Credit Cards OK **943-7900** TA-639

- PROFESSIONAL couple w/3 children seeking 3 or 4 bdrm. home. Kaneohe area. Long lease, up to \$800. 235-2677 evs.
- GRAD. student w/2 child. needs am. hse./col. up to \$500/mo. from Manoa to Hawaii Kai 396-8151
- 109 Condos/Townhouses for Sale
- CENTURY West 14th flr. 2 bdrm/2 ba. Security pool. \$73,900. 737-2124 evs.
- KAHALUU TOWNHOUSE 2 bedroom, 1 bath. Assume loan. 422-6884
- KANEHOE-Kahaluu 6 bdrm., 4 bath duplex on cut-de-sac, view, fee, \$195,000. Courtesy. 263-6660

- 124 Garage/Lanal Sale
- REFRIG. 20 cu. ft., drapes, like new, elec. typewriter & misc. 7.5, 8-5, 917 Kapoho Pl. Mariners Ridge
- LANIKAI, Sun, 7/6, 9-3 p.m. furn. housewares, clothes, bike, weight bench misc. 1502 Mokuia Dr.
- MOVING Sale: 2054 Aani Lu. Pacific Palisades, Sat., 7/5, 8 to 2, 8 dressers, sofa, beds, dinettes, tables, lamps, 650 Kawasaki \$125, 750 Yamaha \$275. Everything goes. Cheap.
- WASHER/dryer, refrig., furn., children's 7520 Puu-mahoe Pl., Sat., 7/5, 8-4
- MILILANI Moving Sale everything must go! Furn., typewriter, items from Far East, etc. 7/4, 5, 6 p.m. 505-601 Kipapa Dr. 623-9456
- MOVING Sale: dining table, hidebed, crib & misc. Sat., Sun. 7/5 & 6, 1291 Ulupuni St. Kailua 9-3
- GARAGE Sale: Sat. July 5, 8 to 4, 279 Alkali Pl., Kailua. baby items, toys, misc. Bargains Galore.
- KAILUA - Be there! Italian bar w/4 stools (\$200), foot lockers, portable typewriters, chests of drawers, dining rm. suite, trimmer lawn mower, etc. Sat. 8-1, 625 Paopua Lp. Kailua.
- 1306 AUPAPAHOE Kailua St., 7/5, 8 a.m. to 2 p.m. Records, clothing, toys, etc.
- MOVING Sale - Must sell - dining table, chairs, hutch, books, stools, and bdrm. set, tools, desk, lots of misc. Fri.-Sun. 46-184 Kailua Pl., Kaneohe. 7a m.-6
- KAILUA Moving Sale: Sat., 7/5, 8-1, 364 Kaha St., Dineite, baby items, toys, misc. housewares and more
- CERAMIC Classes, Wed. 7 to 9 p.m., Sat., 1 to 3:30 p.m. Call 262-8862
- TEAK bdrm. set, rocker, oak dresser, desk, 3 spd. boys bike, neshid. items, misc. Sat., 8 a.m. Rear 557 Wanaao Rd. Kailua
- MOVING Furniture, desks, shelves, TRS-80 computer, etc. Sat. 7/5, 8 a.m. to 2 p.m. 8-3, 589 Ulukahu St.
- AIKAI PARK - 218 Aikapa St., July 5, 9 a.m. Plants, toys, clothes.

- 114 Real Estate for Sale
- MILILANI 2 bdrm., 1 ba w/Whirlpool, Condo, Lse. view, KLI appl. \$78,000 (RA) Schick/G Martin 946-3855
- MILILANI - only \$72,500 VA/FHA/Hula Mae, 2 bdrm. in Nahaha Apts. w/waterproof D.H.-Ewa view. Compare price/location! Call Paul Newlon (R) 537-9414
- SMALL business for sale - mini store, Kailua. 261-7141 Tues. or Wed
- BY OWNER-3 bdrm., 2 bath cedar pole house on quiet cut-de-sac. Inq. call. Fee \$225,000. Ph. 261-3809
- W. TEXAS REPOSESSION Only 7.5% Interest 5 acres prime, \$3,500, \$100 dn. \$45/mo. For free maps, photos & info, write: L. Johnson, P.O. Box 61462, Hon., HI. 96822, 986-2206

### SSSCASHSSS

for used furniture, dressers, desks, beds, rattan & all types of furniture.

Call **834-1080** or **247-6621**

Call anytime **521-6311**

### 122 Travel

AAA - INTERISLAND Jet Tickets. Good anytime, any island. \$30.95 each. 377-5857

AIR TICKETS & coupons lower than Airlines & Travel Agencies to Mainland Europe & Orient. 924-8364

### \$450 R/T EAST COAST

Includes Midwest, Mexico, Canada, Caribbean

## EUROPE BIG DISCOUNTS TRAVEL MART

373-9824 (TA802)

### 124 Garage/Lanal Sale

MOVING! July 5, 95-637 Lavana St. Mililani, hsehold furn. 623-6258

LARGE MOVING SALE Patio furn. & much more. For info call 623-9466

824 N. KALAHEO Ave. hsd., misc. stereo, toys, bike, clothes, plants, fri. & Sat. 9-4.

KAILUA-Big Garage Bkge Sale! Sat. 7/5 8 am-2 pm 733 N. Kalaheo Ave. Multi-family donations to benefit Aulea Swim Team

### 125 Home Appliances

SEARS gas range - \$150. Sears dishwasher - \$75. G.E. dryer - \$50. 624-6557

KITCHENAID D/W porci. \$395. Champion juicer \$120. Cuisinart DC10 \$250. 263-4211

### KEONI'S VCR REPAIR

## FREE PICK-UP AND DELIVERY AND 15% DISCOUNT ON PARTS

**254-1470**

- 128 Miscellaneous
- SEARS 17 cu. ft. refrig. w/2maker, \$150; answering machine, \$40, metal desk \$30; aurlboard \$30; windsurfer board, \$100. 261-9077 or 262-2572 eve.
- OUILTING scraps, small prints. Call 395-7772
- 4 SHELF unit, black wrought iron & wood, crib, new mattress, \$50, hedge trimmer, Black & Decker, \$15, bathroom sink, \$20, Kenmore vacuum, \$20, new sunroof-Volks or sm. car. \$69, reg. \$149. Call 261-1420
- FREE: Young coconut bumper, \$5, crib mattresses \$10. Prices firm. 262-0084
- BUNKBEDS, 200: 2 HP Johnson '81 motor, \$225; misc. chest of drawers, \$15-\$30. Call 395-6339
- BAR & dining rm. set, bikes, piano, weights, plants, stroller. 422-5882
- DINING table & six chairs, \$50. 261-4049 after 5 p.m.
- USED 10 speed bike, 24" new gears \$75 or offer. Call 261-8349 after 4 p.m.
- ELECTROLUX Vacuum, Cost \$1000, Must sell \$300. Call 455-9374
- '85 RAINBOW vacuum. Cost \$900, Must sell \$350. Call 735-2055 or 923-7943
- '85 FLITER Queen Vacuum Cost \$850, Must sell \$250. 735-4651, 926-7292
- WANTED: sm space needed for custom fiberglass work. 262-4194 lv. message
- 19" COLOR TV remote control, \$300. Girls 10 spd. bike, \$20. 254-3442
- 128 Miscellaneous Wanted
- WANTED: Experienced painter w/own basic tools & transportation. Call 396-4221 ask for John.
- WANTED T1-99/AA Computer Console. Call between 6-9 p.m. 262-4005
- CASH for unwanted refrig., washers, dryers, stoves, etc. Will pickup. 262-2196
- TENNIS Partners wanted, inter. level. Hon. - will commute some. 946-1811 George
- CASH paid for Waterbeds, dead or alive, parts, accessories. Ph. 486-3208
- CASH for unwanted refrig. washers, dryers, stoves, TVs. pickup. 262-2196
- 128 Swaps and Exchanges
- SCM Typewriter printer III electronic, portable. Unused, will trade for std. typewriter. 737-2552
- 129 Stereo, Video & Television
- BOSE spkrs 901 series V & equalizer & chrome base. All new \$495. Call 623-0868
- COMPUTER Heathkit Z-120, 192K Main & 192K Color memory & OSDSD drives, built-in green 12" monitor, \$2500 in software. All for \$1500/offer. 456-2720
- 130 Antiques-Art
- WINDWARD ANTIQUES-Buy Sell Trade. Wanted Collectibles & Junk. 160 Hamakua Dr., Kailua 262-Collectib./junk. 160 Hamakua Dr. Kailua 262-5526
- 131 Bicycle Sales & Services
- MEN'S Schwinn Cont. 10 spd., new tires \$75. Ladies Schwinn Varsity 10 spd. w/child's seat \$65. 264-5131
- 10 SPEED bicycle, Cycle Pro \$120. Call 262-5802

## INVENTORY IS MOVING!!

Model	Normally	SALE	Quantity
3400 20" Push R/Bag (all electric)	\$329.95	\$279.95	1
4261 20" Push R/Bag (MZR*)	\$379.95	\$329.95	1
7035 21" Push Side Bag (MZR*)	\$349.95	\$299.95	7
8035AE 21" Self Prop. Side Bag (PRS**)(electric start)	\$564.95	\$514.95	1

### Cast Deck

4600 20" Push R/Bag (MZR*)	\$459.95	\$409.95	1
8241AE 21" Self Prop. Side Bag (BBC***)	\$564.95	\$514.95	1

### Handheld Blower

1490 31CC Gas Blower	\$189.95	\$129.95	1
----------------------	----------	----------	---

### Commercial

6261 21" Push W/Bag	\$469.95	\$419.95	1
8453 21" Self Prop. Catcher optional (MZR*)	\$584.98	\$534.95	1

### Line Trimmer

1100 31CC Gas Trimmer	\$139.95	\$109.95	14
-----------------------	----------	----------	----

LIMITED QUANTITIES  
ITEMS AVAILABLE ONLY AT SOUTH SHORE LAWN MOWER  
2 YEAR WARRANTY WITH A 2 YEAR EXTENDED WARRANTY AVAILABLE  
All units in box, current production 1986 models.  
\*MZR-manual zone restart \*\*PRS-power restart (electric start) \*\*\*BBC-blade brake clutch

## SOUTH SHORE EQUIPMENT

156D. Hamakua Dr., Kailua 261-9711

## \$2 OFF W/THIS AD - HONOLULU RENT-A-CAR

487-2702

# \$49.95 wk.

+ Insur.

Monthly Rates Available  
FREE Mileage • FREE Map • FREE Airport Pickup

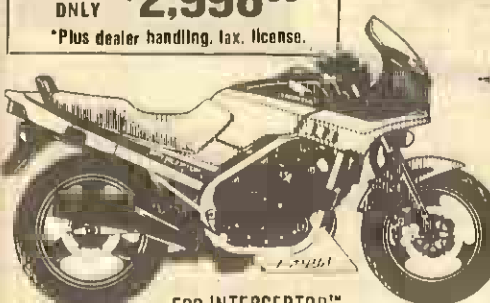
98-360 Kam Hwy., Aiea  
(Next to ARCO Gas Station & BC Used Cars)

- 144 Musical Instruments
- BALDWIN Piano, walnut finish. \$1195. Ph. 732-3240.
- HAMMOND A-100 w/bench & service manual, recently serviced, good cond. \$2000. 737-7829
- EXPERT Piano Moving, Crating, Storage. 833-1659 S&S Delivery 395-7295
- 146 Boots-Supplies/Services
- 18 FOOT outboard w/trailer 75 hp Mercury, \$1500/offer, non running. 499-1067 evs.
- 20 FT CLIPPER-GOOD cond. Main & Jib. \$3500 best offer. 941-8401
- 16 HOBBIE '79 w/trailer. \$1600/offer. Good selling cond. 455-9397 for info.
- 78 20 ft. GALAXY excellent cond., lots of extras, 170 hp Mercruiser \$9000/offer. Call 672-4320
- 146 Boots-Supplies/Services
- 146 Boots-Supplies/Services
- 12' DYNOLIS inflatable, 68 hp Tohatsu & trail, '85 Mcl Like new. \$2700. 455-5964

# HONDA MOTORCYCLES

Plus! **HONDA MOPEDS**

**500 INTERCEPTOR™**  
NOW IN STOCK  
ONLY **\$2,998.00**  
\*Plus dealer handling, tax, license.



500 INTERCEPTOR™

**86 HONDA SPREE**  
ONLY **\$563.00**  
plus tax & license

**85 HONDA AERO 50**  
ONLY **\$765.00**  
plus tax & license

**HAWAII'S MOST COMPLETE HONDA**

**94-169 Farrington Hwy.**

**Sandy Brodie's**  
WAIPAHU CYCLES

**671-2691**  
Mon.-Sat.  
8 a.m.-5 p.m.

**146 Boots/Supplies/Services**

**HOBIE CAT 14'** Great starter boat. Good cond. \$850. 282-7781

**42" GRAND Benks Trawler.** Twin diesels, generator. Free slip \$110,000/offer. Makani Kai Marina. 235-6599

**16' HOBIE Excl. cond.** Ready to sail. Trailer Lic. & road worthy. (W) 257-3280 (H) 949-7254. Bart Bacon

**147 Sporting Goods**

**\$99 THRUSTER SALE.** SEACON SURFCO. OPEN 7 DAYS & NITES. PH. 946-0130

**TWO 80 pound rods with** Dande 3/0 reels loaded with 60 test line used once plus trolling lures. \$350. Call 254-4683

**HAYDEN type surf ski** \$350. Call 293-1219

**151 Pets - Everything**

**TWO LOVEBIRDS.** Including a new cage. Ph. 947-7794

**AKC reg. Alaskan Malamute pup.** great pet, loving companion \$500. 261-2034

**AKC Toy Champagne male** poodle pup, 8 weeks \$275. Phone 623-4200

**156 Auto Service/Parts**

**'73 240Z for parts.** Call 871-6676 ask for Bill

**CUSTOM Upholstery for cars.** Good rates! Call 235-8032

**PORSCHE Auto Parts-New & Used.** Call for low prices. Ph. 836-8876

**FIBERGLASS shell for S-10** or S-15 long \$399. Call 623-1101

**WELDING - chromemoly, stainless, alum., anything.** Supp. & chassis leters. Roll cages, etc. Tom 621-1883

**THE BATTERY FACTORY**

•Motorcycles, Marine & Auto Batteries.

•Starters, Alternators, Regulators & Carburetors.

**Prices You Can Afford.**

1226 Waimanu St. Call 533-3312

**168 Pickups, Trucks**

**'69 DATSUN p/u.** body gd shape, needs eng. work, no papers. \$500. 262-9155

**'80 DIESEL pick-up.** rebuilt engine, dependable, great ml. \$400/offer. 262-5037

**171 Motorcycles, Mopeds & Scooters**

**'78 SUZUKI GS 550.** 7,000 mi. Incl. cruise control \$835. 254-4776

**YAMAHA 80 dirt bike.** Make offer. Call 247-2205

**'80 SUZUKI 450.** 11,000 mi. helmet & faring \$450. Call 487-5282

**'80 YAMAHA 650 XS.** runs good \$900 or best offer. Call 254-2330

**'82 HONDA 900 CB.** Full dress. Excellent condition, well-maintained \$1500. Call Ken. 261-4854 or 235-5881

**'84 HONDA 200X. ATC.** \$1000/offer. 262-9668 eves or 257-2973 days SSGT Dork

**172 Auto Leasing/Rentals**

**LEMON Car & Truck Rentals** Kamaaina & Military Discounts. 3179 Nimitz Hwy. Alipoi. 833-4997

**175 Vans, Campers, Jeep, 4 WD**

**NEW Gem top shell custom** List \$1000, sell \$700. For mini truck. 262-9668 eves or 257-2973 days SSGT Dork

**'77 VOLKS Van.** good cond moving. Must sell \$2000/best offer. Call Sharon 257-2926 or 235-1013 or 734-2915

**'80 VANAGON.** 7 pass., 4 spd., new brakes, recent tune-up. \$4250. 263-4211

**'80 Datsun KING CAB 4x4 5 spd.,** low mi. Extras \$4000 offer. 637-9641, 837-6336

**'85 VOYAGER SE-Excl!** Low mi., auto., air, loaded, must sell. \$13,000 595-3246

**JULY 4th SALE**

VISIT OUR CONVENIENT AIEA SHOWROOM

**6.9% ENDS SOON!**  
Annual Percentage Rate

**CUTLASS SUPREME COUPE**  
AM/FM Stereo, a/c, Power Steering

SALE **\$11,817**

**\$15 JIMMY**  
STK #6724

SALE **\$13,825**

Reg. \$16,845.00

Mags. Auto., A/C, 4 spd., V6, AM/FM Cass Clock  
on approved credit for limited time on select models only

Westridge Showroom  
98-150 Kaonohi St.  
487-5526  
Mon.-Fri. 10 a.m.-9 p.m.  
Sat. 9 a.m.-8 p.m.  
Sun. 10 a.m.-5 p.m.

**PACIFIC OLDSMOBILE & GMC**

Subject to prior sale. Price + tax & lic.

**CUTTER FORD**

MILITARY FINANCING AVAILABLE

<b>'73 PINTO</b> (7845 AYF252)	<b>'895</b>	<b>'70 NOVA</b> (7878 ACC519)	<b>'395</b>
<b>'70 CHEV PICKUP</b> (7869 BWY035)	<b>'495</b>	<b>'72 MALIBU</b> (7886 AYW116)	<b>'495</b>
<b>'75 ELITE</b> (7899 BWZ833)	<b>'395</b>	<b>'79 CAPRICE</b> (7894 BGN627)	<b>'795</b>
<b>'78 COROLLA</b> (7877 HAA176)	<b>'695</b>	<b>'70 CORONA</b> (7856 APC958)	<b>'395</b>

98-015 Kam Hwy, Aiea Ph. 487-3811 JULY 3, 4, 5

**176 Automobiles for Sale**

<b>Ford</b>	<b>MOB</b>
'64 FORD Classic Galaxy 500 51,000 miles. light blue. all original \$4000. 235-3286	'79 MGB. brown, excl. cond., new top, AM/FM, extras. \$3000. Call 254-5724 eves.
'76 GRANADA V8. runs good. \$300. Call 261-6552	Nissan
'79 GRANADA GHIA - Very good cond. \$1750. Call 254-5696 KMCA5	'87 SENTRA. 4-dr., sdn., a/c, p/s, auto., stereo, never driven. 455-4659 alt. 6 p.m.
'78 PINTO Station wagon, auto., p/s, undercoated, excl. cond., \$1475/offer. 261-1344	Oldsmobile
'80 T-BIRD for sale, good cond., \$2000. Call Bill 262-2011 days	BANK Repol '77 Starfire. Call Nancy 525-8216 M-TH 8-4:30, Friday 8-6 pm
'81 FORD Fairmont Squire s/w, p/s, a/c, needs tune-up. 6 cyl. \$1700. 262-9155	Plymouth
'82 MUSTANG L, auto, p/s, air. AM/FM, rustproofed, new tires \$3900/offer. 455-7364	'65 LE MANS. 8 cyl., 326 cu. AM/FM, new brakes, great body. \$2000. Dave 684-7163/4
<b>Honda</b>	'78 GRAND LeMans V8, auto., air, p/s & brakes. \$1200/offer. 623-8935
'77 HONDA Civic. 2 dr., 4 spd., good cond., Asking \$1000. 254-5131	'80 FIREBIRD. Excl. cond., 31,000 mi. Red, air, AM/FM. \$4600/offer. 735-4645 eves.
'77 HONDA Accord. 2 spd., auto., 123,000 mi., runs good, looks good, no rust \$1100. 254-6268	<b>Toyota</b>
80 PRELUDE, must sell, good cond., 5 spd., sunroof, extras. \$3200/offer. 487-2000, 486-8045	'81 TOYOTA Tercel. 3 dr. hbck., auto., excl. mech. cond. \$2500. Ph. 422-1839
83 HONDA Accord LX hatchback, a/c, AM/FM cassette, 45,000 mi. \$8100. Excellent cond. 247-8071	'83 4x4-25,000 mi. chrome rims & big tires. 2" x 3" lift kit w/pipe rack. Asking \$6850. 235-6564
'84 PRELUDE 5 spd., air, silver, low mi., tinted, \$8595. 423-2213, 488-0635	BANK REPO! '83 Tercel. Call Nancy 525-8216. M-TH 8-4:30, Friday 8-6 pm.
'85 PRELUDE - Sunroof, AM/FM cassette, \$11,900/offer. 261-2059 after 5.	'83 COROLLA, no rust, 5 spd., AM/FM. \$4250/offer. 262-2355 (d), 254-2853 (e)
'86 CRX HF. Must sell. Lvg. Island. AM/FM cass. equip., 5 spd. \$2500/best offer & take over payments Brian/Cara 625-1304	<b>Triumph</b>
<b>Jaguar</b>	'70 SPITFIRE, new paint. \$1600/best offer. Ph. 247-5457 evenings
'73 JAGUAR Classic. V12 2 + 2. \$10,950. Call 254-2611	'73 YELLOW TR 6. Excl. cond. \$2900/offer. Call 499-2286.
<b>Lancia</b>	<b>Volkswagen</b>
'78 LANCIA 2 dr., Beta Coupe, GT, 5 spd., \$1925/offer. 946-7379	'65 BUG. 1600 dual port, runs good, reliable. \$2000/offer. Ph. 456-2491
<b>Mazda</b>	'69 BUG 1700cc motor w/dual carbs. Good cond. Custom inter. \$2750. 247-0766 after 6 p.m.
'79 GLC Wagon. 5 spd., air, AM/FM stereo, roof rack. 1 owner-all maint. records. \$1200/offer. 263-4872	'70 BUG. Good engine, battery & trans. Rusty body. Radio. \$395. Ph. 636-8209
'80 MAZDA GLC. good cond., \$700. Call 262-7788	'70 BUG. good cond., runs great, new radials, \$925. 247-8226
'85 MAZDA 626 4 dr., auto., AM/FM cass. \$7000/offer. 262-5573	'73 KARMANN Ghia, auto., good running cond. Needs some body work. \$1500/offer. 623-4999 Jullan
<b>Mercedes</b>	'74 THING. 1600cc convertible & '78 Ford Mustang. 4 spd. 456-9144
'73 220D-Std. new brakes, eng., paint, sheepskins. Pristine cond. Sacrificial Classic \$7500/offer. 262-8528	<b>Volvo</b>
'76 VW DASHER. 4 dr., \$500 or best offer. Call 261-8184	'77 VOLVO 264GL 4 dr., AM/FM cass stereo, elr. sunroof, loaded. Needs nlt. \$2800/best offer. 235-8661 John eves
'76 RABBIT 2 dr., 4 spd. h/bk., needs body work. Runs good w/good tires. \$500. 247-3467 after 7 p.m.	'72 VOLVO Sedan 144E. 4 spd. \$1500. Ph. 732-3240.
<b>Mercury</b>	'78 RABBIT 2 dr., 4 spd., radio. Gd. cond., runs well. \$975. Eve. 671-8814; 455-4960
'74 COMET, 6 cyl., auto., p/s, good tires, runs & looks good. \$600/offer. 235-3995; Monique, morns/eves.	'84 DL 240. Must sell! 5 spd., a/c, AM/FM, takeover p/mts. 845-1619 alt. 7:30

# SAVING MONEY IS ALWAYS GOOD NEWS!

**MIKE SALTA ISUZU PICKUP** #27863



**ONLY \$5395**

**MIKE SALTA PONTIAC SUNBIRD ORDER**



**ONLY \$7795**

**MIKE SALTA PONTIAC FIERO** #71499



**ONLY \$7995**

**MIKE SALTA PONTIAC GRAND AM** #66583



**ONLY \$8695**

**MIKE SALTA PONTIAC GRAND PRIX** #33461



**ONLY \$9895**



Cars are subject to prior sale; prices are plus tax, license and documentary fee. Offer ends 7/9/86.

## MIKE SALTA PONTIAC-ISUZU

2945 N. NIMITZ HIGHWAY  
Ph. 836-2441

## NISSAN OF WAHIAWA

621-0761

### SUMMER NEW CAR SAVINGS

**UP TO**

# \$1,000\*

**REBATES**

**ON ALL NEW NISSAN**

**AS LOW AS**

# \*5.7%

**ANNUAL PERCENTAGE RATE**

**ON NEW NISSAN PICKUPS**

**QUALITY USED CAR SPECIALS**

'82 MAZDA 4 DR. S/W 4 cyl. auto. air HET380	'82 TERCEL 4 DR. Auto 4 cyl. stereo ATU514	'83 CAPRI H/B 4 cyl. 4 speed sunroof. AWC173	'78 CUTLASS 4 DR. 8 cyl. auto. air AYC544	'82 DATSUN 4 DR. S/W 4 cyl. auto. stereo. MFH189	'79 FORD MUSTANG H/B 4 cyl. 4 speed AVB335	'80 MALIBU 2 DR. 8 cyl. auto. l/rc BEN945	'83 TOYOTA 4 DR. 4 cyl. auto low miles. BV5556
<b>\$3995</b>	<b>\$2895</b>	<b>\$3695</b>	<b>\$1995</b>	<b>\$3295</b>	<b>\$1295</b>	<b>\$2495</b>	<b>\$3995</b>

REBATES NOT COMBINABLE WITH 5.7% FINANCING OFFER GOOD THRU 7/8/86

\*36 MO. FINANCING NEW NISSAN PICKUPS ONLY

ALL CARS SUBJECT TO PRIOR SALE. ALL PRICES + TAX, LIC. & DOC. FEES. \*EXCLUDES STANDARD MODELS & MAXIMAS