



Hawaii Marine

September 8, 1990

Published at MCAS Kaneohe Bay. Also serving 1st MEB, Camp H.M. Smith and Marine Barracks, Hawaii.

Vol. 19, No. 35

Air Station salutes military families in Community Day

Enlisted wives' center opens

JPAO

Families here suddenly facing separation from their Marines and sailors will get a chance Sunday afternoon to find out how to square away most of the related problems.

All Marine and Navy families of the Kaneohe Bay community, both on and off base, are being invited by Station Commander Col. R.R. Critser to the "K-Bay Salute to Marine Corps and Navy Families Community Day."

"The entire day will be devoted to the families and to educating them on all the support that is available to them while they are separated from their husbands and wives," said Critser. "It's their day. I would like to see them all attend."

Festivities will take place from 1-5 p.m. at the Station Theater, the Lanai Courtyard and classrooms, and Bay Square, and will be structured around information on benefits and services.

Child care will be available for children ages 4 and up, and will include pony rides, free Disney cartoons, games, and a visit from Ronald McDonald. Pony rides are scheduled for 2-4 p.m., and the Disney cartoons will be screened from 4-5 p.m.

For the rest of the family, service organizations will be on hand at the Lanai Courtyard and classrooms. Refreshments, as well as entertainment headlined by the FMPTac Band, will also be offered. The band will play from 2-2:30 p.m.

An added feature will be video message taping for deployed family members, offered by the Station Training and Audio-Visual Support Center.

"There will be plenty of food and entertainment," Critser said. "But what's more important is that we want to make absolutely sure that none of our Marine and Navy families are left in a situation that is unbearable, whether it be because of housing needs, difficulty with communications with families, children's needs, educational concerns, transportation considerations, or financial problems."

"This is all about giving something back to the Air Station community and providing something that's needed in these times," said Peter Rudisill, MWR's coordinator for the event. "We're especially concerned about reaching the families who are living off base on the local economy."

Also planned for the day is the grand opening of the Station's Enlisted Wives' Center. The center will

See FAMILY/A-10

Prepositioning tested in Gulf crisis

Story and photo by Cpl. Jason Erickson

In the early stages of Operation Desert Shield, some analysts were warning that the first components of U.S. forces would be vulnerable to attack. But because of Maritime Prepositioning Force capabilities the Marine Corps may have averted the day.

Using nine prepositioning ships — which combined, carry approximately 13,000 vehicles and another 3.2 million cubic feet of additional cargo — Marines from California and Hawaii

were able to rapidly deploy to Saudi Arabia with enough gear for 30 days of sustained combat.

The 7th MEB from MCAGCC, Twentynine Palms, Calif., was airlifted first and began off-loading ships in MPS-2 (based off Diego Garcia in the Indian Ocean) Aug. 15. By the end of the second week, Hawaii's 1st MEB began off-loading cargo from MPS-3 (based off Guam in the Pacific Ocean).

As MPS doctrine dictates, equipment aboard the prepositioned ships was off-

loaded and joined with the MEB personnel who were airlifted along with helicopters and other critical equipment not contained on the ships.

The Maritime Prepositioning Force concept was proposed by the Secretary of Defense in 1979 as a new option for increasing the capable response time of the Marine Corps for contingencies around the world. Marines began training with the prepositioning ships in 1984 to fine-tune the on- and off-loading procedures as well as

maximize cargo storage capabilities. Desert Shield was the first real contingency test MPS has had, however.

There are 13 commercially-owned, government-leased MPS vessels divided into three squadrons. The squadrons are staged in strategic locations around the globe and each is set up to support a 16,500-Marine brigade. The four ships of MPS-1, which normally operated in the Atlantic, are dedicated to the 6th MEB at Camp Lejeune, N.C. The five ships in MPS-2 and the four ships in MPS-3 are dedicated to the 7th and 1st MEBs respectively.

There are no reports from DoD that MPS-1 has been or is being deployed, but the 4th MEB from Little Creek, Va., was. Using 13 Navy Amphibious Ships for its cargo, the brigade began leaving from Morehead City, N.C., Aug. 13. Marine Commandant Gen. A.M. Gray told reporters Aug. 20 that 45,000 Marines were now in the Gulf.

During his Annual Report to Congress in 1989, Gen. Gray said: "With a combination of amphibious ships, MPS, land prepositioning, and strategic airlift, you can deploy the Corps where you need it, and when you need it — Now!"

The Corps was needed in Saudi Arabia and now actions speak louder than words as Marines prove once again to be America's force in readiness.



Marines from the 1st MEB and Navy support elements off-load the M.V. Button (MPS-3) during Freedom Banner-90 in July. The MEB, which conducts routine MPS training exercises, has now been called to Operation Desert Shield along with the vessels of MPS-3.

Ombudsman of the year passes on experience

By Cpl. Jason Erickson

Joyce Miller has been an ombudsman for the past five years. She spent half of those in Beaufort, and the other half here. While she says she's the type of person who likes to keep a low profile, her associates put her in the limelight when they selected her as Kaneohe's Ombudsman of the Year for 1990.

The award comes at a time when the ombudsman here are perhaps the busiest they've ever been because of the crisis in the Persian Gulf. Like nearly all of the 48 ombudsmen, Miller has already been kept very busy by the deployment of Marines here.

It also comes on the eve of

the Navy Ombudsman Program's 20th anniversary of service to the Navy-Marine Corps family.

Miller is the wife of Sgt. Mark Miller, Maintenance Company, BSSG-1. Her husband has been deployed, and Miller can relate to the wives she serves — that's why she does it.

Katie Iwanaki, president of the Ombudsmen Program here, said Miller was picked for her commitment to the program.

"She's very active and has gotten many things accomplished for the program," Iwanaki said.

Among her achievements, Miller has coordinated several regular deployment

family briefings and has maintained a newsletter for the families of 1,100 Marines in BSSG-1. She also coordinated responses for a nationwide child care needs survey and sponsored the Group's first and subsequent family picnics.

She also contributed to the May BSSG-1 policy letter which defines various duties of the Ombudsman, commanding officer, executive officer and sergeant major, and is a model for the overall Kaneohe Ombudsman Program.

"She originally got into the Ombudsman program because she wanted to help out, and found that she very much enjoyed the feeling."

"It gives you confidence to know that you can handle your own situation while your

husband is away," she said.

She also said that helping young wives gives her a satisfaction because she was there once and knows what they go through.

"A lot of wives are totally new to the area or even to the Marine Corps, and it's hard to understand how things work sometimes," added Miller.

Along those lines, Miller would like to have a program started to educate wives about Marine Corps issues, such as history, chain of command, and leave and earning statements.

"I think it would help wives to understand what their husbands do, and why they have to do certain things," Miller said.

"When a lot of the units were preparing to deploy,

some of the wives didn't understand why they're husbands never knew for sure when they'd be leaving," Miller said. "As a result, some wives got frustrated because they didn't understand why their husbands couldn't pin-point the day they'd be leaving."

She explained that it usually just takes someone who's been through it before to explain the system to them.

Ombudsmen exist to support the commanding officer by bridging the gap between families and the command they represent. While husbands are away, they help to keep the families in their unit informed of the latest events, and also act as liaison between unit and family when there's a problem.

Miller said she's already helped arranged for one husband to come home from Saudi Arabia because his pregnant wife was near delivery and there were special medical considerations involved.

"I have built a very good report with the commanding officer, and I feel he trusts my judgement in cases like this. That's very important for an ombudsman program to work."

Miller, and her Navy counterpart, will be honored during a dinner ceremony Sept. 11 at the Pearl Harbor Officers' Club from 6-8 p.m. Tickets are \$12.50 each and can be obtained at Family Service Center, Pearl Harbor. For more information call Family Service Center at 474-2220/4222.

News In Brief

Mail To Any Servicemember

"Strangers" who want to send mail to any servicemember involved in Operation Desert Shield must use the following addresses:

Operation Desert Shield
APO New York 09848-0006

Mail is limited to first class mail, of 12 ounces or less (audio cassettes OK). Mail destined for Saudi Arabia must also conform with Saudi customs regulations.

Local Business Helps Out

All Mark's Hallmarks stores are offering to mail letters

or cards to "Generic Servicemembers" in Operation Desert Shield. Bring the mail to the store and they will pay for the postage. Mark's Hallmarks are located in the Windward, Pearlridge and Kahala Malls.

Child Care Center Extends Hours

The Child Development Center here will extend its hours of operation for working parents whose spouses are deployed. The extended hours will begin Monday. If one spouse is deployed, the other working parent is eligible to reserve child care spaces during his or her work hours. The extended hours of operation will be Monday-Thursday 6-10 p.m., and Friday and Saturday 5 p.m. - midnight. For more information or reservations, call 254-5335.

when both parents are deployed. For more information, call 254-3454.

Post Office Hours

The hours for the Post Office in Building 835 are as follows:

Monday-Friday	
Administrative Office	7 a.m.-4:30 p.m.
Registry	9 a.m.-4:30 p.m.
Dispatch	5:30 a.m.-4:30 p.m.
Unit Mail Call	10-11 a.m.
Express Mail	9 a.m.-4:30 p.m.
Money Orders	9 a.m.-4 p.m.
Saturday	9 a.m.-12 p.m.
Sunday and Holidays	CLOSED

Free Long Distance Calls

To help salute Marine and Navy families during Community Day, AT&T will give free three-minute long distance calls to anywhere in the world served by AT&T. The calls can be made Sept. 6-8, 10 a.m. - 6 p.m. inside the Marine Corps Exchange, directly across from the Camera Department.

Agent Privilege Cards

The Station Inspector will assist anyone needing an ID Card for a guardian to take care of dependent children

Hawaii Marine

Family Services	A-5	ASYMCA	A-7
Legally Speaking	A-6	Riotter	A-9
MWR Tickets	A-7	Hawaii Marine Ads	A-10

Red Cross + military = communication

By LCpt. G. Pozner Smith

One of the greatest fears a military wife lives with is her husband going away to war. Being left alone without the reassurances she's used to having can put a strain on anyone. Add to that the responsibility of taking care of the kids, paying the bills and a million other duties, and the need for a helping hand can take on a new meaning.

There are local organizations designed to be that helping hand. The best known is probably the American Red Cross. What started out as one man's dream has evolved into one of the largest and most diverse service organizations in the world (see related story).

When most people think of the Red Cross, images of hardy volunteers feeding dirty faces, or efficient nurses taking pulses come to mind. And while disaster relief and medical care have always been a large part of the Red Cross mission, military men and women see the bold, cherry-red cross symbol as a vital link of communication.

The American Red Cross (ARC), as mandated by Congress, serves as the official link for the families of the U.S. Armed Forces in cases of emergency. The ARC has been doing this since the Spanish-American War near the end of the 19th century. It was called home communication services, and in times of war, when a message from home had to reach an American fighting man, the Red Cross delivered the news.

The news usually wasn't good: sometimes about a grave illness or death of a

parent or spouse. Yet the Red Cross also played the stark, bringing news of a birth. However, the ARC isn't the message link for death and casualty reports of deployed servicemembers. Kathleen Yule, the Red Cross service center manager on the Air Station, said news of deaths and casualties are left to the units.

In light of the Middle East situation, with so many American men and women serving thousands of miles away, the need for this vital communication link is twofold. For instance, if a 1st MEB lance corporal deploys for Operation Desert Shield and his wife is involved in a serious auto accident, the Red Cross will verify the accident, check on the status of the wife and contact the Marine to get him back to Kaneohe Bay.

Servicemembers are encouraged to let relatives back home know about the ARC's role as a communication link. Relatives should contact their local Red Cross chapter now to let them know they have a relative in the military. This will expedite the channels of communication should an emergency occur.

Yule said Red Cross offices around the world have been handed strict guidelines concerning emergency communications for Operation Desert Shield. "The Joint Chiefs of Staff passed down a 'minimize' communication status," she said. "This means only messages about deaths, births and critical illnesses can be communicated." Yule stressed that the limitations apply only to Desert Shield, and all other Red Cross functions will go ahead as normal.

The Red Cross provides many different services to

people worldwide. They include classes on first aid, cardiopulmonary resuscitation, babysitting and swimmer safety, as well as blood donor programs and massive disaster relief efforts. Hawaii Red Cross remains the state's largest health and safety educator, training 60,000 people yearly in standard first aid, CPR and aquatics.

But, as the Red Cross relies almost entirely on a volunteer work force and solely on private donations, it's facing critical shortages of manpower and money. Lt. Col. Gerald Anderson (retired) of the ARC talked about the Red Cross mission Aug. 19 on CNN. He asked for people to volunteer their time and expertise, and said that nationwide, the ARC is "stepping up" its operations due to the Middle East situation.

After recent massive disaster relief efforts for last year's San Francisco earthquake and Hurricane Hugo that decimated the southeastern coast, it's easy to see that the ARC has been taxed to the limits of personnel and funds.

The Air Station Red Cross chapter is also increasing its support, according to Yule, who has only two other full-time staff members in her office. This past week, Yule said several briefs were given to various units on pre-deployment preparations.

"We've been stressing to the Marines and sailors that they should keep in contact with their families when they're gone. But it might be a while before they are able to call or send letters, and the families have to



understand this."

Yule added that it's important for the Marines and sailors to get their financial and other matters in order before they go, but if there is an emergency at home, the Red Cross can help.

She added that the ombudsman on Station have been very helpful, and that the

Red Cross here refers many calls and cases to them. "Sometimes we'll get a call from a wife who just needs to talk to someone," she said.

The ARC also works hand-in-hand with the Navy/Marine Corps Relief Society.

Military families are encouraged to call the Red Cross

for any information at 254-5576/6217. The office on the Air Station is open from 7:30 a.m.-3:30 p.m., Monday-Friday, but emergency after-hour services are handled on a 24-hour basis through the Hickam Chapter at 449-1488.

To volunteer or donate money to the ARC, call 254-5576/6217.

Society gives assistance beyond battlefield relief

By LCpt. G. Pozner Smith

The idea behind what has become today's American Red Cross started with the vision of Henry Dunant of Switzerland. But the credit of founding the diverse social-service organization that has evolved began with a woman named Charissa Harlowe Barton.

In 1881, Barton organized a society that would go well beyond the giving of battle-

field relief, which was Dunant's original intent of an international Red Cross. Barton's society would serve America in times of peace as well as in war, especially when disaster and calamity struck.

The first war-time participation for the ARC was the Spanish-American War of 1898. This was a major turning point for the ARC, which before had prided itself on quick response to

fire, flood and famine. Although ill-equipped for the War in Cuba and the Philippines, the Red Cross sent doctors, nurses and food; help that the soldiers would not have gotten if the Red Cross hadn't been there.

The effort drew praise from many top officials, including President William McKinley.

As successful as the Red Cross was in accomplishing its mission, Barton, already being called the "grand old lady," resigned in 1904 amid charges of mismanagement and financial negligence. But she had accomplished two very significant goals: the official chartering of the ARC by Congress in 1900, and the bringing about of the signing of the Geneva Convention treaty by the U.S. government.

The Red Cross was also there in Galveston, Texas, after the 1900 Hurricane that

claimed 6,000 lives. In 1906, when the infamous earthquake shattered San Francisco, Red Cross workers calmly dished out meals and treated injuries to the tens of thousands of affected citizens. The San Francisco Earthquake allowed the Red Cross to show its massive relief capabilities and closed the mouths of many Red Cross detractors and critics.

Throughout the 20th century, the ARC continues to serve in times of need, in every war and in every type of disaster. The ARC has seen great faces among its volunteers, including an 18-year-old Red Cross ambulance driver named Ernest Hemingway, who would go on to win the Nobel Prize for Literature. He earned Italy's second highest award, the Silver Medal of Valor for rescuing a fallen comrade in battle during World War I.

Today, the ARC has more than 3,000 chapters in the U.S. with about 78,000 volunteers. There are 300 chapters on U.S. military installations across the world. Hawaii-based military chapters alone processed more than 17,000 emergency communications in 1989 and provided more than \$300,000

in financial assistance.

In 1904, Clara Barton said that "It is not in its past that the glories or benefits of the Red Cross lie, but in the possibilities it has created for the future, in the lessons it has taught, in the avenues to humane effort it has opened...."

YOU'RE NEVER OUT OF TOUCH.

Around the Clock. Around the World.



Hawaii Marine
The Hawaii Marine is an unofficial newspaper published every Thursday by RFD Publications, Inc., 45-826 Laina Road, Kaneohe, HI 96744, a private firm not connected with the Department of the Navy or the United States Marine Corps. All advertising is provided by RFD Publications, Inc., by calling 255-5881 or by visiting their office. Circulation is 8,000.
The Hawaii Marine is a free publication delivered each week to all family housing units aboard Marine Corps Air Station, Kaneohe Bay and to all Hawaii-based Marine Corps commands. Housing carriers are paid only

Emergency communications set up Red Cross deploys to Middle East

WASHINGTON D.C. — The first of 16 American Red Cross workers expected to be assigned to U.S. military units deployed to the Middle East arrived there Aug. 14.

The primary function of workers like George T. Hitchcock, a Red Cross station manager, and other Red Cross volunteers on the Armed Forces staff, will be to facilitate traditional Red Cross emergency communications between service personnel and their families during the military action.

According to Hitchcock, who just returned from the Army's 2nd Infantry Division in South Korea, "getting a

message out to a soldier during a combat situation will mean experiencing the same weather conditions and battle hazards as our service personnel. I know how important it is to the mental attitude of our troops that they be informed about health and welfare news from home in a timely fashion."

In addition to staffing a 24-hour a day, seven-day-a-week electronic emergency communications system that will link service personnel with more than 2,700 Red Cross chapters nationwide, Red Cross workers will provide other support to U.S. troops including emergency financial assistance and social service referrals. The

Red Cross also assists with emergency travel needs.

American Red Cross workers are civilians who volunteered to serve during the conflict, and are participating in the military action at the request of the Department of Defense and individual branches of the Armed Services. Initial assignments are from three to six months. The Red Cross also cooperates with other civilian and military organizations assisting military people during the crisis.

Red Cross workers already named to serve in the Persian Gulf come from a variety of disciplines, though

most have social work skills. Each was formerly assigned to a military base in the United States or overseas.

"We are prepared to supply additional Red Cross staff as requested," said John Fong, director of Military and Social Services at the American Red Cross National Headquarters. "The American Red Cross is the only national Red Cross society that routinely provides services to members of the Armed Forces and families. Typically, we handle one emergency communicate every 38 seconds, but with the crisis in the Middle East, Red Cross emergency communications activities have increased."

Big MAKE A PLAN!

VOLUNTEER 2000

VOLUNTEER—THE FUTURE IS YOU.

CONTACT YOUR LOCAL RED CROSS CHAPTER

American Red Cross 254-5575

by voluntary contributions from customers who are satisfied with the postage delivery service. A voluntary contribution of \$1.50 a month may be solicited by these carriers. Housing residents may contact the publisher directly if they wish to stop home delivery. Questions concerning circulation policies and service can be answered by calling the publisher.

The Hawaii Marine welcomes stories and photo submissions from its readers, and can respond to timely requests for specialized coverage. Please call the MCAS/1st MEB Joint Public Affairs Office at 257-8745 for Windward activities or the Fleet Marine Force, Pacific, Public Affairs Office at 477-6862 for Leeward activities. Opinions expressed by the publisher and its writers are their own and are not to be considered an official expression of the Department of the Navy or the United States Marine Corps.

News advertised in the Hawaii Marine must be made available for purchase, use, or patronage to everyone without regard to race, creed, color, national origin, religion, age or sex of purchaser, user or patron. The appearance of all advertisements in the Hawaii Marine, to include inserts and/or flyers, does not constitute endorsement of the firm, products or services by the Department of Defense, the Department of the Navy or the United States Marine Corps.

Commanding Officer: Col. R.F. Ortner
Public Affairs Officer: Capt. L.M. Ryan
Editor: Sgt. T.L. Allen

President praises military during Desert Shield

By Cpl Jason Erickson

On Aug. 8, the U.S. military got the call from its Commander-in-Chief to deploy to Saudi Arabia for Operation Desert Shield. By the end of August, in the face of Saddam Hussein's formidable Iraqi force, American troops stood well-armed and firmly planted on Saudi soil. Desert Shield has seen the deployment of more military power in fewer days than any other operation in the world's history. More than 100,000 Marines, sailors, soldiers and airmen, as well as a billion pounds of material, have reportedly been deployed to the Arabian Peninsula and surrounding waters.

"Desert Shield has been a classic case of America's military at its best," President Bush told Veterans of Foreign Wars during their National Convention Aug. 20.

The Department of Defense has used a variety of military and commercial aircraft and shipping assets to handle the demanding transportation needs involved.

While there are reports that Saudi airfields are centers of non-stop action as troops and equipment continue to pour into the country, DoD reports 95 percent of the heavy equipment — meaning the bulk of U.S. mechanized and artillery ground forces — is being transported by sea.

In addition to nine pre-positioning ships and 13 amphibious ships used by Marines, eight FAST Sea-lift Cargo Ships, 10 Afloat Pre-positioning Force Ships, and a number of specially chartered commercial ocean vessels have already been put to use.

Ground forces in the region include the 45,000-strong 1st Marine Expeditionary Force; the 24th Mechanized Infantry Division; the 101st Airborne Division; and the 3d Cavalry Regiment.

While U.S. forces are outnumbered by the estimated 165,000 Iraqi troops in Kuwait and along the Iraq-Saudi border, Chairman of the Joint Chiefs of Staff Gen.

Collin Powell said U.S. Naval gunfire and aircraft assets will more than even the odds.

Before Iraq invaded Kuwait, an eight-ship U.S. Navy flotilla was in the Persian Gulf as part of a 40-year-old routine deployment schedule. Additionally, the *USS Independence* carrier battle group was in the Indian Ocean and the *USS Dwight D. Eisenhower* carrier battle group was in the Mediterranean.

By Aug. 8, when President Bush called for U.S. military deployment to the region, the *USS Saratoga* carrier battle group and the battleship *USS Wisconsin* had already departed from East Coast

ports en route for the Middle East.

The Navy has already established control of the nearly 25,000 square miles of sea lanes in and around the Middle East, according to the Navy News Service.

In addition to sea superiority, the U.S. is expected to have little trouble establishing dominance in the air if hostilities break out.

U.S. fighter and bomber aircraft now in the region include B-52s, F-117A Stealth fighters, F-14s, F-15Es, F-16s, F/A-18s, A-10s, A-6s and AV-8Bs. While Iraq's air force is by no means small, it is said to lack the training or the technology to withstand U.S. firepower in the air.

H. Lawrence Garrett III, Secretary of the Navy, knows of the importance of U.S. technological advantages, but he sees people as the most important factor.

At the Long Beach Naval Station in California, he told Navy and Marine Corps families that "no matter how much our continuing research and development preserves our technological edge — America's margin of superiority ultimately depends on each and every one of you, and on the sacrifices you and your families so willingly make."

People and advanced technological equipment continue to pour into the Gulf with every day.

Total Quality Leadership

By Capt. Rick Wileman

The last six Total Quality Leadership articles discussed the first twelve of Dr. W. Edwards Deming's 14 Management Principles. This article focuses on principles 13 and 14.

Principle 13. Institute a vigorous program of education and self-improvement.

"What an organization needs is not just good people; it needs people that are improving with education," said Deming.

The type of education and self-improvement is not necessarily important. It need

not be work related. In fact, who is to say what skills or knowledge will be applied at work anyway? Who knows what knowledge will be needed in the future?

Of course, work-related education would be beneficial. Education in the new philosophy might be a start. Education as simple and powerful statistical tools can be used at all levels by all employees. Other topics could include basic math, reading, and writing skills; job related subjects like chemistry or electronics; and even personal improvement classes in stress reduction and weight control.

Education and training can

prevent burnout. People are exposed to new ideas. They discuss these ideas with their fellow employees. They meet new people. The new environment is one of learning, growing and improving. Most people want to work in such an environment.

When an organization improves its quality and improves productivity, fewer people may be needed for specific functions. At the same time, however, other functions that are new or expanding will require additional people. Through education and training an organization can fill new jobs and new responsibilities with

members of its family.

Principle 14. Put everybody in the organization to work to accomplish the transformation. The transformation is everybody's job.

Do whatever you can within your sphere of influence. If your leadership and management is on board, your job will be easier. If not, do what you can. There should be a chain reaction when people become aware of what quality is.

How do we improve processes? Deming recommends the Plan, Do, Check, Act Cycle.

Plan. Assemble experts

and identify what changes are desirable. Collect data. Plan a change or a test.

Do. Carry out the change or test on a small scale if possible.

Check. Measure the results. Observe the effects. Study the results.

Act. Make policy changes. Implement on a larger scale. Decide to conduct further tests.

The cycle never ends. After you act, you plan to improve again; continuous improvement, forever.

In addition to leadership talking the talk, it must walk the walk. Deming says: "Top management must

feel pain and dissatisfaction with past performance and must have the courage to change. They must break out of line, even to the point of exile among their peers. There must be a burning desire to transform their style of management."

Top management must create an environment where those in charge want to know what the problems are and where workers are willing to identify them.

To those who say, "If it ain't broke, don't fix it," Tom Peters says, "If you think it ain't broke, you're not looking hard enough."

Make Eye Contact

SOFT CONTACT LENSES

- Daily
- Tinted
- Extended Wear
- Disposable



*Complete Professional Vision Services
Dedicated to Quality And Service In Vision Care*

FAMILY EYE EXAMINATION PLAN	\$49 ⁰⁰	Includes All Immediate Family Members
SOFT CONTACT LENSES	from \$79 ⁰⁰	Includes Care Kit Follow up Care 90 DAY TRIAL PERIOD
PRESCRIPTION GLASSES	from \$49 ⁰⁰	

DR. CHARLES DEAN - Optometrist
139 Hekili St. • Kailua **261-9735**

WINDWARD
DUI DEFENSE

BODE A. UALE, Esq.
(Former St. Joseph's Public Defender)

FREE CONSULTATION

Low Offices of
Joseph P.H. Ahuna, Jr.
KANEHOE HAWAII

235-4000

LOSE YOUR FAT EASIER!

LOSE 4-14 PERMANENT INCHES IN 1 HOUR!

EUROPE'S #1 CELLULITE BODY TREATMENT
WHAT A BALANCED DIET & EXERCISE IS UNABLE TO DO

*Based on Consulting: HIRSH, DODD, WELLS, and Associates, Inc. • Honolulu, Hawaii • *Banned Toxic Drugs & Chemicals
*No Side Effects • *No Downtime • *No Pain • *No Discomfort • *No Redness • *No Swelling • *No Bruising • *No Itching

THIS IS NOT A WATER LOSS!

23% OFF

EXPIRES 12/90

3 WRAP SERIES w/FREE FACIAL

Present This Ad

FREE VIDEO DEMONSTRATION 236-4400 KANEHOE

LIFE STYLES BEAUTY HEALTH CENTER
KARON KANEHOE, TECHNICIAN & DISTRIBUTOR OF BIOMERICAL PRODUCTS

HAIR

ALTERNATIVES

At Kailua

Visit Hair Alternatives at Kailua Liberty House for your next hair cut, permanent wave, color or nail beautifying. Consultations are complimentary and no appointment is needed with our stylists.

SERVICES INCLUDE:	Master Stylist	Stylist
• Haircut	16.00	18.00
• Permanent wave, haircut	32.00	36.00
• Color, highlighting, glassing or jazzing only, plus haircut	35.00	40.00

All services include cleansing, conditioning and style.

NAIL SERVICE TO PAMPER YOU:	
Manicures	10.00
Pedicures	20.00
Nail extensions	40.00
Files	20.00

Prices for additional services available upon request. No appointment necessary except with our master stylists. phone 945-5696.
hair alternatives . kailua

LIBERTY HOUSE

THE TACO SHOP



Celebrating

3 YEARS

OF SERVING THE FINEST MEXICAN FOOD THIS SIDE OF THE KOOLAUS.

The Cantina

SERVING DELICIOUS CHAR-BROILED HAMBURGERS & HOTDOGS

ALSO \$1.50 MARGARITAS HAPPY HOUR

3pm-9pm
Monday-Saturday

WINDWARD MALL
THE FOODCOURT

235-2229

FAST SERVICE TAKE-OUT AVAILABLE

\$1.00 OFF MEDIUM NACHO MAGNIFICO

Seasoned Ground Beef, Refried Beans, Nacho Chips, Tomatoes, Olives, Cheddar & Monterey Jack Cheese, Sour Cream Served With Our Home Made Salsa Sauce. Expires 9/30/90 Reg. \$5.95

This coupon not valid with any other offer or discount.

FREE MEDIUM SOFT DRINK

With Purchase Of Any FIESTA COMBINATION PLATE

Expires 9/20/90
This coupon not valid with any other offer or discount.

THE TACO SHOP

MASC-2 detachment supports Giant Warrior

By Sgt. W.M. Alexander

A 19-man Early Warning Control Team (EWCT) from MACS-2 deployed to Saipan to support aircraft participating in Giant Warrior-90 held Aug. 6-11. The exercise was sponsored by the 15th Air Force from Riverside, Calif. Using realistic air-war scenarios, Giant Warrior gave pilots from bases across the United States a chance to drop live ordnance on bombing ranges at Farallon Island,

roughly 70 miles north of Saipan. While the "red" force's F-15 pilots defended the island, the attacking "blue" force maneuvered to drop live ordnance there. The attackers flew their B-52s, F-18s, A-6s, and F-4s out of Anderson Air Force Base on Guam. Radar support was two-dimensional. Using the AN/TPS-63 radar, the Marines set up inside the Navy Satellite Tracking Station atop the northern tip of Snipan. They

gave close ground control intercept to the "red" force in the northern half of the Marianas Islands. Nineteen controllers from the 6010th Aerospace Defense Group, Wheeler Air Base, set up a site at Mount Santa Rosa on Guam, to control the southern half. Both units gave broadest or "big picture" control to the "blue" force and controlled air refuelers who acted as the "white" force. "We had two four-hour

missions a day," said 1st Lt. E.H. Minchin, MACS-2 Communications Electronics Officer. "It was a really good exercise for the fairly limited system we had. "It (the system) would normally be used as a gap filler behind a mountain range or something, with just a couple of Marines to pass information to the Tactical Air Operations Center (TAOC)," he said. "But we had, at any one time, up to 50 aircraft airborne under our control.

We were performing the mission of a complete TAOC." Before the "air wars" began Aug. 6, MACS-2 took time to promote one of its Marines, Cpl. Dean Guyton, on "Suicide Cliff." The cliff is a historical site which got its name during World War II. According to SSgt. Fred Daubenspeck, EWCT detachment NCOIC, after the United States overran Saipan

during the war, many Japanese flung themselves to their deaths there after hearing misguided "horror stories" about American treatment of its prisoners. 1st Lt. Minchin said the Air Force plans to make Giant Warrior an annual exercise. If so, with the experience his Marines gained this year, he plans to deploy more personnel and equipment in the future.

Dunn & Dunn
Attorneys at Law
A Law Corporation

- Low Uncontested Divorces
- Low Uncontested Adoptions
- Bankruptcy
- Car Accidents & Deaths

DAY SERVICE/RUSH AVAILABLE
OPEN EVENINGS & SATURDAYS

567 South King St. Suite 178 Ph. 524-4529




Greg T. Dunn
Former Military
JAG Attorney

RESUMES and SF 171's

- Military Specialist — so you don't have to keep explaining all your terminology.
- Award Winning Writer — to put you in the best possible light.
- Laser Set Availability — to set you out in a crowd.
- MasterCard & Visa Accepted

COMPLETE BUSINESS SERVICES
455-1177

Pearl City



KAILUA OPTICAL
Has One Hour Service On Most FT 28 and Single vision Lenses.

CONTACTS from \$59
COMPLETE GLASSES from \$69
OVER 1,000 FRAMES

Kailua Square • Ulunlu Street • 282-6191



Luke Jones, Owner

Bargain Air
LOWEST AIR FARES TO THE WORLD

LOS ANGELES/ SAN FRANCISCO	FROM	\$290	RT
SAN DIEGO	FROM	\$320	RT
HOUSTON	FROM	\$495	RT
MILWAUKEE	FROM	\$505	RT
FLORIDA	FROM	\$525	RT

MANY MORE DESTINATIONS • RESTRICTIONS APPLY • FARES SUBJECT TO CHANGE

537-2355
1991 KAPIOLANI BLVD., STE. 1030
TA 1152




FAST EDDIE'S NIGHTCLUB
Presents
The Eighth Annual
HAIR SALON COMPETITION

WEDNESDAY
SEPTEMBER 12, 1990

DOORS: 7PM
COMPETITION 8PM
ADMISSION: \$4.00

COMPETITION CATEGORIES

- BRIGHT LIGHTS, BIG CITY
- STARS OF THE GALAXY

See the Island's Top Stylists & Salons Compete for
\$1200.00
Cash and Prizes

52 ONEAWA ST., KAILUA
RESERVATIONS 281-8561



21 YEARS OF AGE AND ABOVE

SAVE 30%
KOA FURNITURE SALE



See for yourself just how beautiful koa furniture is.

Hawaiian Heritage Furniture

2870 UOLENA ST. (2nd right off of Lagoon Dr., near the airport)
Open: M-F 9:00 to 5:30 Sat 9:00 to 5:00

839-6656

OUR CHAMPUS PROVIDERS MEET MANY SPECIAL NEEDS.

CHAMPUS Prime and CHAMPUS Extra have a network of over 400 doctors in a variety of special practices.

When your Primary Care Physician says you need to see a specialist, you'll be tapped into a plan with over 400 highly qualified health care professionals. In areas of specialization

that range from orthopedic surgery to clinical psychiatry. Cardiology to dermatology. Located in private practices and health care facilities islandwide.

Special solutions for special needs. One more reason to make The Queen's Health Care Plan your CHAMPUS provider.

CHAMPUS SERVICE CENTERS
Tripler Army Medical Center, Room 4G 222
Two Waterfront Plaza, Suite 200, 500 Ala Moana Blvd.

The Queen's Health Care Plan

You've Got A Friend
522-7545




CHAMPUS Prime and CHAMPUS Extra are approved by the Department of Defense for eligible uniformed services family members and retirees, and are available in Hawaii exclusively from The Queen's Health Care Plan, Inc.

Family Services

The Family Service Center has the following free programs to help military people improve their lives. For more information, reservations, or to get on the FSC newsletter mailing list, call 254-1541.

Family Day Care Homes

If you are caring for children in your home for 10 or more hours a week, please register with the FDCH Office. If you are looking for a certified day care provider, be sure to visit the FDCH Office at the FSC.

Coping With Separation

Coping with Separation is a new program designed to help spouses cope with the stresses of deployment. The program will provide an opportunity for you to share your strengths as well as your fears to help you become stronger. Classes will be held Thursdays from 9-11 a.m. Reservations are not required.

New Arrivals Tour

Join other singles and families new to the Air Station for an orientation and tour of the Island Sept. 14 from 8 a.m.-4 p.m. Bring a bag lunch. Soda will be provided. Children are welcome. Reservations are required.

Job Bank

Looking for a job? Get a computerized list of jobs available in the civilian community and get your name into the computer. Employment assistance is also available by appointment.

How to Buy a Car

Learn what you're up against when you purchase a new or used car Sept. 17 from

1-4 p.m. Workshop topics include: dealer/salesman tactics, financing options and sources, payment factors, the car's dollar value, insurance, and negotiating the sale.

Active Parenting

A six-week video-based program will be held at the FSC Wednesdays from 7-9 p.m.

beginning Oct. 24. Reservations are now being taken for this free series.

Sponsorship Briefs

A class for sponsors is given Thursdays from 2-3 p.m. at the Family Service Center. Learn how to make a newcomer's arrival an enjoyable, memorable experience.

Reservations are not needed.

Friendship Series

A four-week program to increase knowledge about developing friendships and deepening existing relationships will be held Mondays from 12:30-2 p.m. beginning Oct. 15.

Playmoring

A free mobile preschool for parents and children (infants to 5 year olds) will be in the following housing locations:
Mondays 2454-2460 Cochran St.
Tuesdays Elrod St. & Cochran St.
Wednesdays Dodson St. & Cochran St.

Thursdays Daly Rd. & Bordelon Lp.

Come to any of these locations from 9-11 a.m. You don't have to live in housing to attend. On stormy days Playmoring meets at the Family Service Center Lane. Babysitters are welcome but are limited to 4 children per adult.

ALL NEW SATURDAY MORNING SHOWS ON FOX!
JOIN US FOR A WHOLE NEW LINE-UP OF GREAT NEW SHOWS JUST FOR KIDS!

BOBBY'S WORLD

TOM & JERRY KIDS SHOW

ZAZOO U.

ATTACK OF THE KILLER TOMATOES

FOX'S FUN HOUSE

FOX KIDS CLUB

PIGGSBURG PIGS

Premieres Saturday September 8th

BEST WESTERN

Jewels of the West

Best Western
INDEPENDENT
WORLDWIDE
BOOKING

AMERICAN VALUE

When it comes to value for your dollar, no one shines like Best Western.

Special rates for government and military employees are just one of a glittering array of offers.

Available only at participating "Jewels of the West" Best Westerns in California, Nevada and Hawaii.

For reservations, call 1-800-528-1224.

It's easy to enter the AT&T Push the Right Buttons Sweepstakes

Just dial 1 800 STAY ATT from any touch-tone phone. 110 prizes awarded daily.

• Every day 10 callers will receive a Delta Air Lines Roundtrip "Anywhere USA" Ticket. Take off—to anywhere Delta Air Lines flies in the Continental U.S.*

• 100 callers a day will receive a FREE AT&T T-shirt.

• And all callers are entered in the AT&T Sports Spectacular Grand Prize drawing by just dialing 1 800 STAY ATT... a trip for 10 to any 1991 major U.S. sporting event of your choice.

*If you're stationed in Hawaii or Alaska, Delta Air Lines will fly you to any destination in the continental U.S. See rules for specific eligibility requirements and full program details.

AT&T Push the Right Buttons Sweepstakes Official Rules

NO PURCHASE NECESSARY.
Sweepstakes open exclusively to active duty or retired U.S. Military Personnel and their immediate family members (AT&T, 8-00000) in the Continental U.S., Alaska and Hawaii (except employees and their immediate family members of AT&T, American Telephone and Telegraph, American Telephone and Telegraph, Air Force, Marines, and Coast Guard). To enter as often as you like, call 1 800 STAY ATT from any touch-tone phone in the Continental U.S., Alaska and Hawaii between June 15, 1990-Doc. 15, 1991. AT&T will award 10 Delta Air Lines Certificates daily within the program period. Each certificate is good for 1 roundtrip ticket on Delta Air Lines to anywhere within the 48 contiguous states (not Delta) apply (Value \$350.00) Limit one Delta Certificate per household. In addition, AT&T will also award 100 AT&T T-shirts daily throughout the promotion (Value \$5.00) Each call made will set an automatic entry into the Grand Prize drawing to take place on or about Dec. 17, 1990. AT&T will award 1 Grand Prize consisting of 1 trip for 10 people to the winner's choice of any 1991 major U.S. sporting event that is played in the Continental U.S. The Grand Prize Trip will include Round Trip Air Transportation, Game Tickets, Hotel accommodations, and ground transfers from airport to hotel for 10 people (Value \$20,000.00). Sweepstakes is void where prohibited or restricted by law. Liability for taxes in the sole responsibility of the individual winner. Odds of winning will be dependent on the number of calls received. All winners (including the Grand Prize Winner) will be randomly determined by American Telephone and Telegraph independent judging organization whose decisions are final. Winners will be notified immediately during the call and the Grand Prize Winner will be notified by mail. All winners will be required to sign an affidavit of eligibility and release (for a list of winners, send a stamped, self-addressed envelope to: AT&T Push the Right Buttons Sweepstakes, P.O. Box 2249, Hartford, CT 06120-0249). Prizes are non-transferable for cash. Travel prizes must be redeemed through authorized travel agents. Delta Air Lines Certificates must be redeemed by Dec. 15, 1991.

AT&T
The right choice.

MDA...
Dedicated to the idea that "No disease is incurable. There are only diseases whose cures are yet to be found."
Muscular Dystrophy Association
810 Seventh Avenue
New York, N.Y. 10019

MARKET FUN RIDES
• Parties
• Grand Openings
• Special Events
• Birthdays & Games
• Fundraiser dinners on percentage basis
• Tent Rentals & Games
• Popcorn, Cotton Candy, Snow Ice, Soft, Kids
Tickets avail.
PH. 871-3661 delivery for 4 hrs.

HOLIDAY THEATRES

Enchanted Lake Cinemas
1080 Keolu Dr. 263-4171

A SECRET WEAPON
8:30, 9 & 10:15
Sat & Sun 12:30 & 3

AIN AMERICA
TAKING CARE OF BUSINESS
7:15
CHARLES GRODIN
Sat & Sun 12:30 CONT.

JITSAKES
Sat & Sun ONLY
11, 1 & 3

SCORPION
TOTAL RECALL
2 Peter Weller, Nancy Allen
8:15 & 9:45
KAILUA 261-9103

PUMP UP THE VOLUME
Christian Slater
Plus

MY BLUE HEAVEN
7 PM
Sat 1:30P
LAIE 293-8488

YOUNG GUNS II
EMILIO ESTEVIZ
KAILUA 261-9103
NOW ON TV 1:00P 8775

SCORPION
TOTAL RECALL
Get ready...
10 & 8:30

Legally Speaking

By Capt. Brian Palmer

The Soldiers and Sailors Civil Relief Act has been in existence in many different forms since the Civil War.

Congress and state legislatures have long recognized that the very nature of military service makes it extremely difficult for servicemembers to meet their financial obligations or to assert their rights.

During the Civil War, Congress put a temporary halt to all civil court actions brought against federal soldiers. During World War I, Congress passed the Soldiers and Sailors Civil Relief Act of 1918, which provided few

guidelines, but did tell trial courts to take whatever measure justice required to protect servicemembers' rights.

In 1940, Congress passed the present version of the SSCRA.

The Act suspends or postpones certain civil obligations to allow servicemembers to devote their full attention to their assigned duties. It also permits the delay of civil court proceedings where military service prevents the servicemember from asserting or protecting a legal right.

Finally, the Act also protects the dependents for the limited purpose of preventing

evictions for non-payment of rent without a court order for a period of up to three months following a servicemember's discharge. The eviction protection is very weak, because it applies to rentals of \$150 or less.

Servicemembers most commonly find themselves needing SSCRA when facing debt actions, divorce and support actions or paternity actions.

Once a Marine becomes aware that he is being sued in civil court, he should act quickly. Failure to act in a timely fashion may result in a default judgement. He must tell the party suing him and the court involved he is on active duty and that he wishes to invoke his rights

under the SSCRA.

Depending on the state involved, the effect of providing such notice could stay the action for a maximum of three months beyond his discharge. However, many states have drastically reduced the length of time a stay will be granted. In some cases, it is only good for a couple of weeks, requiring the servicemember to request a new stay every time the old one expires.

The best way to invoke the Act is to send an affidavit to the court which indicates that the servicemember is on active duty in the U.S. Armed Forces, and that he did not enter the service to avoid the action.

It is also very important that the servicemember tell the court that he is not represented by an attorney. Courts have been known to construe almost any communication from an attorney on behalf of a servicemember to mean he has been retained by the servicemember. This may terminate the servicemember's protection from default judgement, leaving him with no rights to petition the court to re-open the case.

If a servicemember successfully invokes the SSCRA, the state court involved must appoint a lawyer to assist him. The primary responsibility of the court-appointed attorney is to ascertain

whether the defendant is in the military and, if so, request a stay of the civil proceeding in the defendant's behalf. Be warned, however, that if you leave the Armed Forces, that same court-appointed attorney will report to the court and force you to appear or lose by default.

If you are in the process of being sued and need to invoke your rights under SSCRA, you should go to the Legal Services Center and speak to an attorney. He will assist you with the preparation of documents necessary to stay the action. Further, he can advise you on the best course action to remedy the situation.

ARMY COMMUNITY THEATRE

presents

Annie

The Musical Story of Little Orphan Annie, The Comic Strip Waif.

Book by Thomas Meehan • Music by Charles Strouse

SEPTEMBER 6, 7, 8, 14, 15, 21 & 22
RICHARDSON THEATRE, FT. SHAFTER

Adults: \$8 7:30 PM CURTAIN For more info
Children: \$4 Open to the Public 655-9081
E1-E6: FREE

Beer on Ice

Coldest in Town
7 Days

Bud & Bud Light
\$6.99 12 pack cans
Mon.-Fri.

KMCAS Special
Free Bag of Ice
with \$10.00
purchase

Liquor +
Alkali Park Shopping Ctr.
254-6699
Mon.-Thurs.: 10 a.m. - 10 p.m.
Fri., Sat.: 10 a.m. - 12 midnight
Sun.: 10 a.m. - 10 p.m.

Flash Bulletin!!

Unconditional Protection for America's Armed Forces

This is a reminder that UNITED SERVICES LIFE continues to provide NO WAR CLAUSE LIFE INSURANCE PROTECTION. Even if you're stationed in or expect to be assigned to a volatile area, like the present Middle East situation, you're eligible for life insurance coverage without increased premiums.

In 1937, USLI became one of the first insurance carriers to protect military personnel without a "war clause". For over 50 years, we have insured military families without ever breaking our promise. To receive unconditional life insurance protection, call your UNITED SERVICES LIFE regional manager listed below:

J.R. SLOAN
88-850 Helehu Dr., Suite #29
(Behind Catter Ford in Aiea)
Aiea, HI

488-3055

• AVAILABLE 24 HOURS BY PHONE •

440 Parker Drive, P.O. Box 170
Arlington, VA 22201 United Services Life
Insurance Company
A member of USLI/FC Corporation

Century 21 WINDWARD

OUR NEXT PRE-LICENSING CLASS FOR THE HAWAII STATE EXAM WILL BEGIN TUESDAY, SEPTEMBER 11th

THE NEXT HAWAII STATE CONTINUING EDUCATION MODULES WILL BE TAUGHT ON SEPTEMBER 21st and 22nd

CALL TODAY FOR RESERVATIONS

263-3322

Put your trust in Number One:

© All trademarks of Century 21 Real Estate Corporation
Equal Opportunity Employer
EACH OFFICE IS INDEPENDENTLY OWNED AND OPERATED

Friday

Candidate Forum

Democrats Mike Crozier, Mufi Hannemann, Ron Menor and Patsy Mink from the Second District Congressional race discuss the issues and answer your questions.

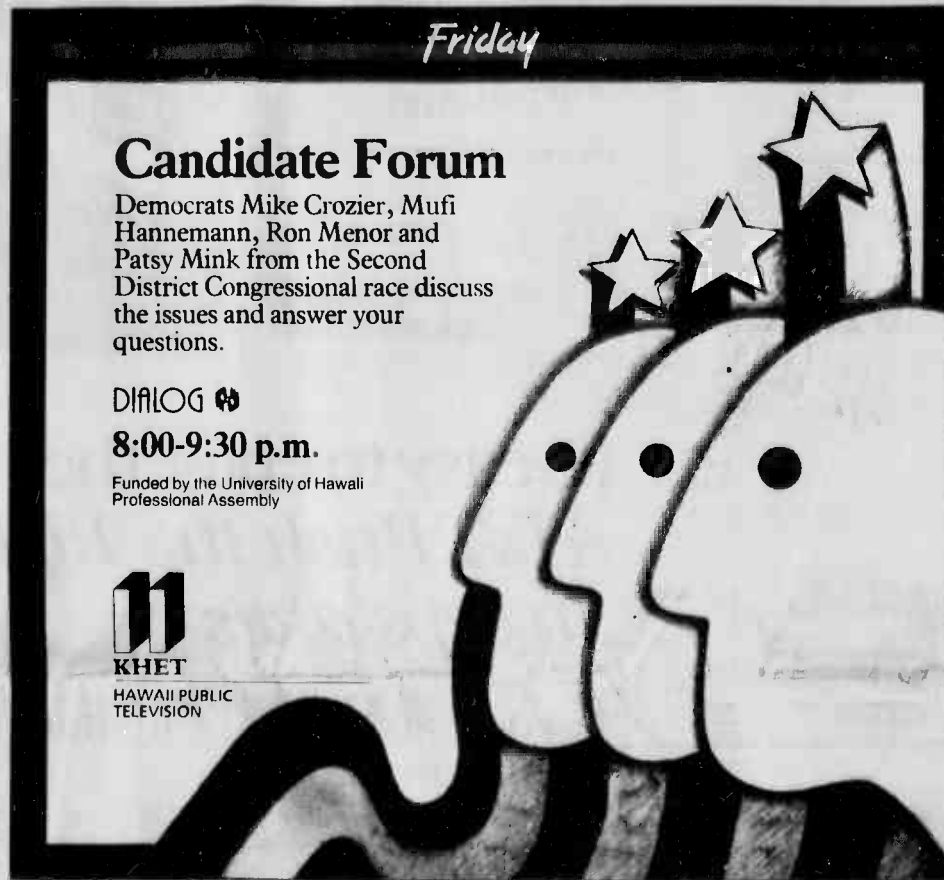
DIALOG 49

8:00-9:30 p.m.

Funded by the University of Hawaii Professional Assembly



KHET
HAWAII PUBLIC TELEVISION



Weight Watchers®



What a Great New Program.

I knew I could do it this time. When I started the exciting New Fast & Flexible Program from Weight Watchers, it included all the foods I like to eat—even pizza. Finally, there's a program I can live with.

It's fast. Because the new program allows me to enjoy the same food I regularly eat, I thought it would take time to see results. Was I in for a surprise. In just three weeks, my friends told me I looked sensational! And best of all, I didn't have to change my lifestyle to do it.

And I can still have a slice of pizza.

REGISTER NOW FOR JUST \$?

SALE \$18.00	NO HIDDEN COSTS	
	Regularly	Now Only
	Registration \$ 21.50	\$ 3.00
	Weekly Fee \$ 8.50	\$ 8.50
	First Mtg \$ 30.00	\$ 11.50

CALL TODAY! 521-2113

NEW FAST & FLEXIBLE PROGRAM

Weight Watchers® is a Registered Trademark of Weight Watchers International Inc. © 1990, Weight Watchers International Inc. All rights reserved.

For Outer Island Meetings Call 1-800-535-6296 OAHU

AIEA

Pearl Kai Center 98-199 Kam Hwy	5:30 pm
Monday	5:30 pm
Tuesday	5:30 pm
Wednesday	5:30 pm
Thursday	5:30 pm
Friday	5:30 pm
Saturday	5:30 pm
Sunday	5:30 pm

DOWNTOWN

Executive Center 1088 Bishop Street	5:30 pm
3rd Floor Conference Room	5:30 pm
Mon & Tues	11:45 am
Express Meeting	

EWA BEACH

First Baptist Church of Ewa Beach	5:30 pm
91 928 Fort Weaver Road	5:30 pm
Thursday	5:30 pm
Friday	5:30 pm
Saturday	5:30 pm
Sunday	5:30 pm

HAWAII KAI

Mariners Cove Bay Club	5:30 pm
800 Lunailo Home Road	5:30 pm
Wednesday	5:30 pm

HONOLULU

1430 Kona St. Suite 204	5:30 pm
Next to Ala Moana Shopping Center	5:30 pm
Monday	5:45 pm
Tuesday	5:30 pm
Wednesday	5:30 pm
Thursday	5:30 pm
Friday	5:30 pm
Saturday	5:30 pm
Sunday	5:30 pm

KAHALA

Wesley Methodist Church	5:30 pm
1360 Honolulu Rd.	5:30 pm
Tuesday	7:00 pm

KAILUA

Windward Trade Center	5:30 pm
602 Kalua Rd.	5:30 pm
Tuesday	5:30 pm
Wednesday	5:30 pm
Thursday	5:30 pm
Friday	5:30 pm
Saturday	5:30 pm

KANEOHE

Parker United Methodist Church	5:30 pm
45-211 Waialae Road	5:30 pm
Monday	5:30 pm
Tuesday	5:30 pm

MILILANI

Christ Lutheran Church of Mililani	5:30 pm
261 381 Mahalo Parkway	5:30 pm
Tuesday	5:30 pm

PEARL HARBOR

Hale Moku Community Center	5:30 pm
Hale Moku Navy Housing	5:30 pm
Waiala St, make a left	5:30 pm
Wednesday	5:30 pm

WAIHANA

Waihana Methodist Church	5:30 pm
1445 California Ave.	5:30 pm
Monday	5:30 pm

WAIANAE

Maiala Lutheran Church	5:30 pm
55-298 Farrington Hwy.	5:30 pm
Tuesday	5:30 pm

New/Renewing Members

Registration begins at the times listed. The meeting begins 1/2 hour later and lasts for 45 minutes. This offer expires September 30, 1990.

MWR Tickets

The MWR Ticket Office offers tickets and information on how to get them at special military rates. The office also takes reservations for events and attractions around the Island. Call the Entertainment Hotline at 254-3304 or come to building 219, the theater lobby, for information and reservations.

Aloha Bowl Tickets—Tickets are now on sale for this Christmas Day classic. Tickets for 40-50 yard line seats are \$18.

Barefoot Catamaran cruises—Sails 12:30 p.m. Sail includes lunch, zodiac rides, snorkeling and ocean water slide. Tickets are \$38.

Honolulu Symphony—Featuring John Browning on the piano Sunday at 4 p.m. and Tuesday at 8 p.m.

Comedy Club—Bob Gulob will be the headliner and Tony Edwards the featured act through Tuesday.

98 Rock and Roll Party Cruise—Friday and Saturday evenings on the Hokunani for two and a half hours

of live R&R music and dancing. Tickets are \$14.

Oktoberfest '90—Celebrate an annual tradition of fun at the Hale Koa Hotel Sept. 26-30. Tickets are \$6. A wide selection of authentic German food and traditional drinks will be available for purchase. Large groups are welcome.

Diamond Head Theater—Tony Award-winning musical classic "Kismet" will be performed Sept. 14—Oct. 14.

Kennedy Theater—"Bye Bye, Hana Bruttah Days" will be performed Sept. 28 & 29 at 8 p.m. and Sept. 29 & 30 at 2 p.m.

Theater tickets for all Consolidated Theaters are only \$4.25 and are good until December 1990.

Rainbow Football tickets for all games are now available. Sideline tickets are \$14.50 and end zone seats are \$12.50. Children's and senior citizen's tickets are \$7.50 (north end zone only). The following games are scheduled: Oct. 6—Maine, Oct. 20—Fullerton, Oct. 27—Pacific, Nov. 3—New Mexico, Nov. 17—Wyoming, Nov. 24—Colorado State, Dec. 1—Brigham Young.

MWR Movies

Family Theater
7:15 p.m.
254-2113

Thursday
Rocky Horror Picture Show—(R) A fantasy horror starring Susan Sarandon, Tim Curry and Barry Bostwick. A fantasy spoof of Hollywood's old horror movies with contemporary music and weird sexual overtones.

Friday-Sunday
Gremlins 2—(PG-13) A horror movie starring Phoebe Cates and Gizmo. When a series of accidents creates a totally new generation of gremlins, Billy, Kate and Gizmo once again try to prevent another catastrophe.

Monday-Wednesday
Robo Cop 2—(R) Science fiction/action. In the Detroit of the future, Cop

Murphy struggles to recover his human past as he battles a drug-crazed gang, resists mind control rehabilitation and finally joins forces with his pretty partner to battle a robot created to replace him.

Saturday Matinee
1 p.m.
The Fox and the Hound—(G) Animated. The adventures of a baby fox and a young hunting hound.

Totally Tropical

FUTONS & FRAMES

"Drive A Little - Save A Lot"

Specials through Sept. 10

"Lanikai": Hardwood Armless Bifold
Full frame: \$199⁰⁰ Compare at \$279.00
Queen frame: \$219⁰⁰ Compare at \$299.00

"Kailua": 4 Position Lounger with edge moulding
Twin frame: \$99⁰⁰ Compare at \$140.00
Full frame: \$109⁰⁰ Compare at \$160.00
Queen frame: \$119⁰⁰ Compare at \$180.00

and much, much more!
3 Months No Interest Financing Available!



4-Position Lounger




Bifold

HONOLULU
735 Sheridan St., Bldg. B
Phone: 955-3478

KAILUA
320 Ukaolu St.
262-9312

MON.-SAT.: 11am-6pm
SUNDAY: 12noon-4pm



CHAMINADE UNIVERSITY
OF HONOLULU

MBA Program

The Program Designed for Working Professionals
Classes Offered in the Evenings and on Saturday Mornings
Kaneohe ★ Honolulu ★ Pearl Harbor
Free Advising at All Three Locations

Our program offers a strong core of required courses with great flexibility within the elective area, including the possibility of internships.

The program can be completed within fifteen months.

Fall Semester Registration begins on September 7
Fall Semester Classes begin on October 1

There's still time to register for the Fall Semester.
For information, call 735-4735 or mail in the coupon below.

Please send me an MBA catalog and application.

Name _____

Address _____

City _____ Zip _____

Day Phone _____

Mail to:
Chaminade University Honolulu
Admissions Office
3140 Waiialae Avenue
Honolulu, HI 96816-1578

1 HOUR SERVICE

(More complicated prescriptions may take from 24 to 72 hours)


On Most Single Vision and Flat Top Bifocals

50% OFF

All Frames In Stock

KAILUA OPTICAL

Now Has 1 Hour Service
On Most Flat Top 28 Bifocals
and Single Vision Lenses



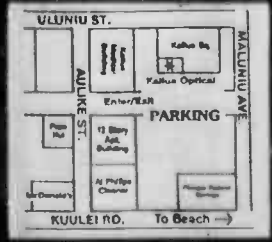
Luke Jones, Owner

WHY PAY MORE FOR FAST SERVICE WHEN YOU CAN RECEIVE FAST, PERSONALIZED SERVICE FROM KAILUA OPTICAL!

Personalized Service • Low Prices • Over 1000 Frames • Fast Service

- Over 12 Years In Business
- Complete Single Vision Glasses from **\$69.00**
- Complete Bifocal Glasses from **\$99.00**
- Bausch & Lomb contacts from **\$59.00**
- Most Optical Prescriptions Back In About 1 Hour!

ASK YOUR EYE DOCTOR ABOUT US



MON.-FRI.: 9:30-5:30
SAT.: 9:00-3:00

315 Uluniu St., Kailua

For more information phone **262-6191**

Armed Services YMCA

The Armed Service YMCA Outreach Office is located on the Air Station, down the sidewalk from the 7-Day Store. For more information and to make reservations, call 254-4719 or 254-4965.

GED, Tuesday
Sign up now for classes in GED preparation and English as a second language. Classes are designed for those who do not have a high school diploma or to increase conversational English ability. Classes start Tuesday, and will be held Tuesdays and Thursdays from 9:30 a.m.-noon. Registration is \$5, and classes are free.

Canvas Shoe Art, Wednesday
Sneaker art is the newest fashion rage. Bring a pair of new canvas shoes or

sneakers and decorate them with puff paints, sequins and glitter. Designed sneakers sell in the store for up to \$60. Child care is available.

Decorator Book Covers, Sept. 14
Children can have a great time designing and creating their own school book cover using a variety of items. Each child can cover two books for a \$2 fee. There is limited space for this class so please sign up soon.

Parenting, Sept. 28
Carol Pajari, Branch director of ASYMCA Outreach, is offering a seven-week parenting class starting Sept. 28. The classes will be held Fridays from 9:30-11:30 a.m. The free classes are designed to help you enjoy a better relationship with your child.

and help them be more responsible for their school work and chores. Registration fee is \$6 for first parent. A free book will be provided.

Driver's Education, Monday
Driver's education classes will begin Monday, on four consecutive Mondays from 9-11 a.m. The \$10 fee includes the manual and a trip to the licensing bureau for the permit test.

Play school
Designed as a skills building program for 4 and 5 year olds, Play school will be held Monday and Wednesday from 9-11:30 a.m. The seven-week series will begin Monday. Children will sharpen social and self-help skills, practice sharing and listening to others, and learn

colors, basic alphabet and number skills. The fee is \$30.

Lamaze Classes
New classes begin every six

weeks. All aspects of pregnancy, labor and delivery are covered to make the birth of your baby a wonderful experience.

Reserve your place by signing up around your sixth month of pregnancy. Our certified instructor was trained by Dr. Lamaze.

NCOA supports Desert Shield

The Non Commissioned Officers Association (NCOA) is asking its members, their families and friends to show support for the servicemen and women involved in Operation Desert Shield by displaying a red, white and blue ribbon as part of NCOA's "Project Patriot's Pride."

Patriot's Pride is the NCOA's way of showing the nation's colors and honoring the patriot's participating in Desert Shield, both overseas

and at home. The project kicked-off Saturday and will continue until the situation in the Middle East is resolved.

According to NCOA President Walter W. Krueger, "these ribbons should be placed not only 'round the old oak tree, but also on car antennas, door knobs, store and business fronts, residential entrances, etc., to show that we are with our troops in spirit and prayer."

NCOA's 214 chapters and more than 150 service cen-

ters have been asked to make the ribbons available at no cost to the general public. NCOA officials hope that other organizations will follow suit in this ribbon campaign.

The NCOA is a worldwide association consisting of current and former noncommissioned officers and petty officers from all five branches of the U.S. Armed Forces, as well as military retirees and members of the National Guard and Reserves.

LAW OFFICES OF KENNETH H. NAKAMURA

- Property, Probate & Business
- Personal Injury & Accidents
- Divorce & Adoptions

247-8512

46-001 Km. Highway, Suite 307 KANEONE
CASTLE PROFESSIONAL CENTER

Auto-Logic™ Answering System

KXT 1000 **\$54.88**

TTS with Auto-Logic™ Answering System, Recordable OGM Chip and 2-Digit LED Call Counter

KXT 2596 **\$79.98**

Integrated Telephone With Auto-Logic™ Answering System

KXT 2632 **\$149.88**

White Supplies Last

Panasonic
Authorized Sales & Service

\$10.00 OFF
OFF ANY REPAIR OR SERVICE FOR YOUR CORDLESS PHONE OR ANSWERING MACHINE

COUPON

ALOHA PHONE COMPANY
1534 Makiloa St., Honolulu (808) 947-1112 Expires 9/30/90

PERMANENT MAKE-UP
Regulated by a physician

SPECIAL ON EYEBROWS

•Eyeliner •Lipliner •Blush

•Makeovers available for the new you

•Professionally done by hand or by machine

FREE VIDEO DEMONSTRATIONS / ALL WORK GUARANTEED

LOSE YOUR UGLY CELLULITE!

LOSE 4-14 Inches in one hour overall

•where diet and exercise fail •This is not a water loss!

1010 S. King B-9 **Lasting Beauty®** 528-1116
MEDICAL ARTS BUILDING Health and Care Center 524-5049

HAS PAIN THROWN YOUR GAME OFF?

ouch!!

oof!

DON'T PLAY AROUND WITH YOUR ACHES AND PAINS... LET CHIROPRACTIC HELP YOU!

High! High! GO! GO! SORRY 'BOUT THAT!

CALL DR. PHILLIPS TODAY! WE'LL HELP YOU GET BACK IN THE GAME!

STRIKE!

262-5555

Enchanted Lake Chiropractic

1090 Keolu Dr., Kailua

REGISTER NOW FOR THE 6TH ANNUAL HAWAII BABY PAGEANT

Registration ends Friday, Sept. 7, 1990

NO COST TO ENTER

•Boys & Girls Eligible
•Figs, Heam, E-zams
•Baby Beauty Show
•Rosette Ribbons
•Only One Child Per Family

•Twins Accepted
•Coronation Pageant October 14, 1990
•Savings Bonds Awarded
•Age Limit - 1 Month thru 8 Years
•Trophies

Baby need not be present to register. Register in Person by phone or Mail

524-3338

BABY PAGEANT OFFICE
1130 N. NIMITZ HWY., #B-200
HONOLULU, HI 96817

SPONSORED BY
KAIMUKI Y'S MEN CLUB

BENEFITS YMCA PROGRAMS

You... can make a world of difference!

Look for the 0300 series in your CSC Brochure!

INTERNATIONAL SERVICE AGENCIES
1-800-636-8079

New!

GBC Boxes and Packaging!
See our new location!
We're at 4478 Malaai Street near Costco!

NEW LOCATION
Enter on LAWRHANA

GBC BOXES & PACKAGING

- * Over 70 sizes of Packing and Shipping Boxes!
- * Everything you need for Gift wrapping!
- * Let our experts Pack and Ship your Fragile Items!
- * Check our prices on Party Supplies!
- * Lots of free parking!

Call 423-4111 for Information!
Open Mon - Fri 8 am to 5 pm
Saturday 9 am to 4 pm

Club Pearl Happenings...

We're here for you! - HAWAII MVM DEPT.

Thursday, September 6 & 13
Jazz in the Aloha Lounge 7:30 p.m.-11:30 a.m.
Country Music in the Panilo Lounge 8:30 p.m.-11:30 a.m.

Friday, September 7 & 14
Disco in the Aloha Lounge 8:30 p.m.-1:30 a.m. (\$2.00 cover)
Rock & Roll in the Paradise Lounge 8:30 p.m.-1:30 a.m. (\$2.00 cover)
(Rollerskating w/Rock & Roll 9/14)
Country Music in the Panilo Lounge 8:30 p.m.-1:30 a.m.

Saturday, September 8 & 15
Disco in the Aloha Lounge 8:30 p.m.-1:30 a.m. (\$2.00 cover)
Country Music in the Panilo Lounge 8:30 p.m.-1:30 a.m.
Rock & Roll in the Paradise Lounge 8:30 p.m.-1:30 a.m. (\$2.00 cover)

Tuesday, September 11 & 18
Walter's Karaoke in the Aloha Lounge 8 p.m.-11 p.m. (\$2.00 cover)

Wednesday, September 12 & 19
Country Music in the Panilo Lounge 8:30 p.m.-11:30 p.m.

— Added Attractions —
Grand Opening of Panilo Lounge
September 22, 1990
Door Prizes
First Come First Serve

CLUB PEARL PRESENTS ROLLERSKATING WITH ROCK AND ROLL & KONTRAST

Friday, September 14, 1990
8:30 p.m.-1 a.m. hours
Paradise Lounge
Must be 18 & older!!!
\$2.00 Cover Charge
Authorized Personnel only!

Limited sizes in skates—
Come early or bring your own!
IT'S HOT ENOUGH TO BURN YOU!

For Information:
Sharon/Stacy 471-1741

Door Prizes also!

In the Blotter

Alcohol-related incidents

Honolulu Police arrested a Marine for DWI after he was observed operating his vehicle with an expired registration and safety inspection. The Marine had no drivers license or proof of insurance. He was administered a field sobriety test which failed. He submitted to an Intoxilyzer test which resulted in a blood-alcohol content of .20 percent. The Marine was re-

leased on \$350 and is scheduled to appear in court. His decal was removed and his Station driving privileges have been suspended.

Honolulu Police stopped three Marines in a vehicle for a violation of the seat belt law. The driver was administered a field sobriety test which he failed. The Marines were transported to HPD where the driver submitted to an Intoxilyzer test, which resulted in a blood-

alcohol content of .14 percent. The driver was arrested for DWI and having an open container in the vehicle. He is being held on \$200 bail. The other Marines were arrested for open container and released on \$50 bail. They are all scheduled to appear in court.

Honolulu Police stopped a Marine for loud music in Kailua. Upon contact with the Marine, an odor of alcohol was detected. He failed a field sobriety test, was

arrested for DWI and was transported to the Kailua Substation where he refused to submit to a BAC test. The Marine was released on \$150 bail and is scheduled to appear in court. His decal has been removed and his Station driving privileges were suspended.

MPA responded to a breach of peace at the Enlisted Club where five Marines were involved in an argument. One of the Marines became

combative and attacked the military police which resulted in him being physically restrained. Investigation revealed that three of the five Marines were underage, including the combative Marine. The three Marines were transported to the MPD where the combative Marine attempted to leave while restrained which resulted in him injuring himself. He was then transported to the Branch Medical Clinic where he was treated for his inju-

ries. The other two Marines were processed and released to a representative of their command.

Other incidents

MPA responded to a neighborhood dispute in housing where two dependent wives were involved in an argument. Investigation revealed that the argument started when one of the women asked the other to turn down her stereo. Both women were processed and released.

GEAR UP YOUR BICYCLES WITH THE PROS!

PERFORMANCE TUNE-UP SPECIAL \$10 OFF

15% OFF ALL PARTS & ACCESSORIES

- Professional Service Dept.
- Clothing Accessories
- Parts & Accessories



GEAR UP EARLY FOR THE 1990 CENTURY RIDE
Sale Ends 9/16/90
247-5200

46-174 Kahuhupa St., Kaneohe (Across Windward Dodge, Isuzu, Subaru)

Thalia's STEAK & SEAFOOD RESTAURANT, KANEOHE

"A Fine Dining Gathering Place With An Intimate Atmosphere"

Serving Dinner Nightly Featuring Kiawe Broiled Prime Rib & Steaks, Seafood And Our Famous Pulehu Ribs.

Breakfast And Lunch Served Every Sunday.
A Variety Of Foods To Satisfy Every Appetite. Let Us Help You With All Your Party Planning For All Occasions.

For Your Next Friendly Gathering Remember

Thalia's

Senior Citizens Discount Every Tuesdays & Thursdays

Reservations Accepted

Lunch Served 5 Days A Week Monday-Friday 11:00 a.m.-2:00 p.m.

Dinner Served 7 Days A Week Monday-Sunday 5:30 p.m.-10:00 p.m.

236-0501 • KANEOHE • 46-014 Kamehameha Hwy. • In The Heart Of Kaneohe

UNITED ARMED FORCES ASSOCIATION

MILITARY & FEDERAL EMPLOYEES Automobile Insurance

(Telephone Quotes Available)

254-6977 or 6978

Pali Palms Plaza • Kalaheo Ave. • Kailua Above Navy Federal Credit Union

PART-TIME POSITIONS AVAILABLE

The Hawaii Army National Guard is looking for people to fill important Part Time Positions.

If you have no experience, we will train you in any of the following skills:
Artillery • Engineer • Communication • Mechanic
Infantryman • Administration • Medical Specialist
Food Service Specialist • And Many More

- If you have prior military service, you may fill any vacancy immediately. Participate with us for 38 days a year, and you may qualify for the following benefits:
- FREE COLLEGE TUITION AT ANY UH CAMPUS (must meet residency requirements)
- THE NEW GI BILL (up to \$5040 for a better education)
- \$10,000 STUDENT LOAN REPAYMENT
- STARTING PAY ABOVE MINIMUM WAGE
- AND MANY MORE BENEFITS

If you're adventurous and a seeker of new challenges, give us a call today and be a part of HAWAII'S Own and help us Guard Hawaii!
CALL YOUR HAWAII ARMY NATIONAL GUARD REPRESENTATIVE TODAY
PEARL CITY 486-4637 • KAIMUKI 735-3872 • KAUAI 825-2346
WAIHANA 822-9878 • KALIHI 948-4661

THE HAIR CELLAR
In Kaneohe
46 005 Kawa Street, #104
235-8878 (Wed-Sat)

Leisure Curl	\$65
Wave Nouveau	
TCR & Care Free Curl	\$50
Relaxers: includes conditioner	\$45

We Specialize in Black Hair Care. We Do Flaxer Waves, Hair Waxing, Flat Iron, Tress & Military Cuts. Long hair slightly more. All prices subject to tax. Call For An Appointment

JOHN DAUGHTERS, M.S.
Certified Hypnotherapist
Lose Weight
Stop Smoking
Gain Confidence
Improve Performance
Release Blocks to Success & Happiness

CALL FOR FREE Introductory Tape 262-5911

KOOLAU PETS Anniversary SALE

COME VISIT OUR NEW LOCATION ON THE LOWER LEVEL NEXT TO J.C. PENNEY'S

25% OFF HOEI PENN-PLAX ASSORTED BIRD CAGES

20% OFF ALL KAYTEE BIRDSEED PRODUCTS

Sale Ends 9/9/90.

20% OFF ALL Lambert Kay Flea & Tick Products For Dogs & Cats

WINDWARD MALL 235-6477

WEINBERG & BELL

ATTORNEYS AT LAW, A LAW CORPORATION

ANNOUNCES THE OPENING OF THEIR NEW NEIGHBORHOOD OFFICE

NEWTOWN PLAZA
98-1247 Kaahumanu, Suite 306-B

487-3211
OR
488-3446

Free Parking
EVENING & WEEKEND HOURS

**PERSONAL INJURY
AUTO ACCIDENTS
MEDICAL NEGLIGENCE
DEFECTIVE PRODUCTS
INSURANCE LAW**

Workmen's Compensation

Jao M. Weinberg and Roy J. Bell III

- Free first consultation
- No fee unless our clients recover compensation.
- Caring professional involvement of attorneys and staff.
- Trial lawyers who are aggressive, thorough, and ethical.
- All personal injury and accidental death claims considered.

A Law Corporation

1164 Bishop Street Suite 1200
Telephone (808) 523 9477
Facsimile (808) 521 4681

Hawaii Marine Ads

AUTO

1969 Ford Fairlane, runs great, good body, classic style, power brakes and steering. \$900 OBO. Call Peter at 254-5471.

1971 Dodge Dnrt, runs great, needs little work. \$450 OBO. Call Alvin at 254-5709 after 6 p.m.

1987 Chevy Astro Van, A/T, P/S, P/B, A/C, AM/FM Cass., Power windows, Ex. condition. \$10,500 OBO. Call 254-4524.

MISC

King size bed complete with frame, mattress, boxsprings. \$200. Call 254-1953.

Ladies clothes. Career-oriented style. Misses sizes 8 & 10. Junior sizes 7/8, 9/10, 11/12. Call 254-5540 after 6:30 p.m.

King size waterbed with brand new mattress. Moving, must sell. Make offer. Call 254-5540 after 6:30 p.m.

Queen size semi-waveless waterbed, walnut finish. 4 dwr pedestal. Only \$350 or best offer. Call 239-9804 after 5 p.m.

WANTED

Want to buy toddlers Little Tikes toys, swing, sand box, picnic table, and seesaw. Call Martha at 254-6341.

FAMILY/from A-1 provide a place for enlisted wives and children to meet, dine together, and spend the night if they choose.

"We want it to be their home away from home — a place where they can come and relax and meet with their children," said Critzer.

The day kicks off with the commanding officer's brief at 1 p.m. Forums on community services, medical, legal matters and child care benefits will then be held. Some of the organizations represented will include the Family Service Center, Armed Services YMCA, Housing Office, MWR, scouts, and CHAMPUS, along with chaplains and ombudsmen.

Transportation will be provided by a shuttle bus through the housing areas starting at 12:45 p.m. Stops will be on main roads only, and no unaccompanied children are allowed.

Those who need more information on the event can contact MWR at 254-1651.

LEADERS
CORPORATE CAREERS FOR JUNIOR MILITARY OFFICERS

Representing Fortune 500 companies, **LEADERS** informs, interviews and selects the finest junior officers for later presentation to our Client Companies.

ATTEND OUR LEADERS INFORMATION SESSION:

September 8
10:00 a.m.
Holiday Inn Honolulu
Kalaheka Avenue

LEADERS:
Jim Rucks - USNA '74
Tom Quinn - USMA '79

1701 Westwind Dr., Suite 230
Bakersfield, CA 93304

(805) 328-1333



SALE \$54

Outer Limits™ Perm Reg. \$68 shampoo, haircut and styling included. Long hair and perms with additional charge. Sale prices effective through Sat. September 15.

JCPenney Styling Salon

OPEN SUNDAYS FOR YOUR CONVENIENCE

NEXUS **GIMME CURL PERM** **SENIOR CITIZEN'S DISCOUNT**
Sale \$40 Reg \$48 Mon., Tues & Wed. 10% OFF
Sale Ends Sat, Sept. 15. ALL SALON SERVICES

WINDWARD 235-4224

LIFECO TRAVEL SERVICES

A FULL SERVICE TRAVEL AGENCY — OPEN TO MILITARY AND CIVILIAN

- *AIRLINE TICKETS
- *HOTEL RESERVATIONS
- *TOUR PACKAGES
- *AMTRAK
- *CRUISES
- *CAR RESERVATIONS
- *INTER ISLAND RESERVATIONS
- *MILITARY & KAMAAINA RATES

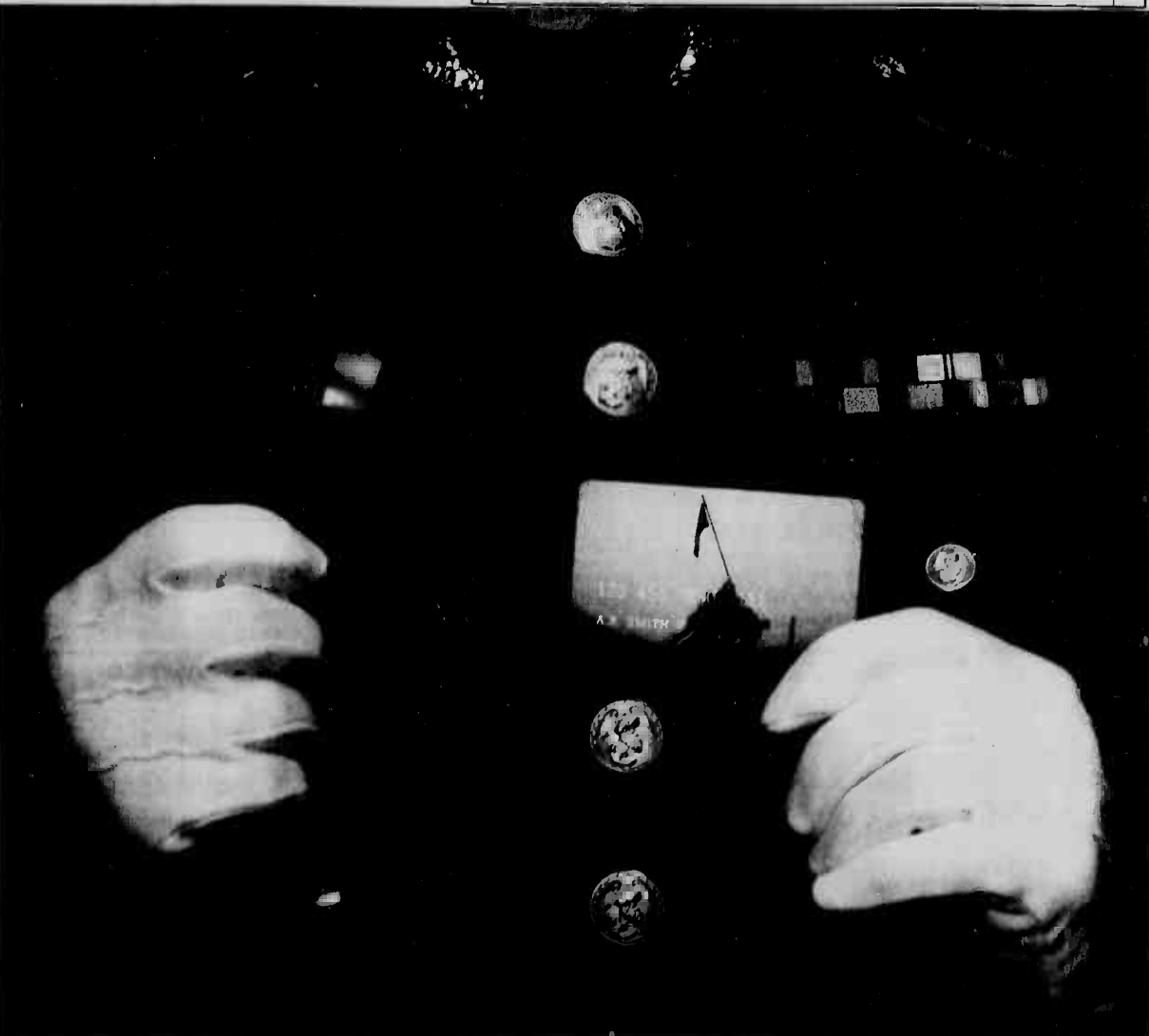
LOCATED TO SERVE YOU AT:
CAMP H.M. SMITH — AIEA 487-1567
KANEHOE BAY AIR STATION 254-4554
KANEHOE BAY POST EXCHANGE 254-3581

ALL BOWLERS

1. Form your own league or join a league at Hickam Bowling Center, Hickam AFB
2. Morning leagues available to join — Tuesday & Friday, 0900 hrs.
3. Form your own morning league, days and times available; as follows: Monday 0900 hrs Thursday 0900 hrs
4. Evening times available to join or form your own league are as follows:
5. For more information contact J.J. Smith, 449-2702.



Sunday	Monday	Tuesday	Wednesday	Thursday	Friday	Saturday
1730 hrs	1645 hrs	2100 hrs	2045 hrs	1830 hrs	1800 hrs	1730 hrs
	1930 hrs				2130 hrs	



MCI introduces the Marine Calling Card. An easier way for you to call from Kaneohe.

Now all your long distance calls will be simpler, faster, and more convenient, with the Marine Calling Card from MCI. Its unique design, created specifically for the Marines, will get everyone's attention. But the Marine Calling Card gives you more than just a second look.

- Use your Card from any phone in the U.S. to virtually any phone in the world.
- Frees you from carrying excess charge.
- Lets you call direct, from base payphones, by simply dialing 0+area code+ the number. No extra digits to dial.
- Supports your Base's MWR Fund, with an MCI contribution each time you make a call.

To sign up for your own Marine Calling Card, send in the coupon below, or call 1-800-950-HOME. Getting home has never been easier.

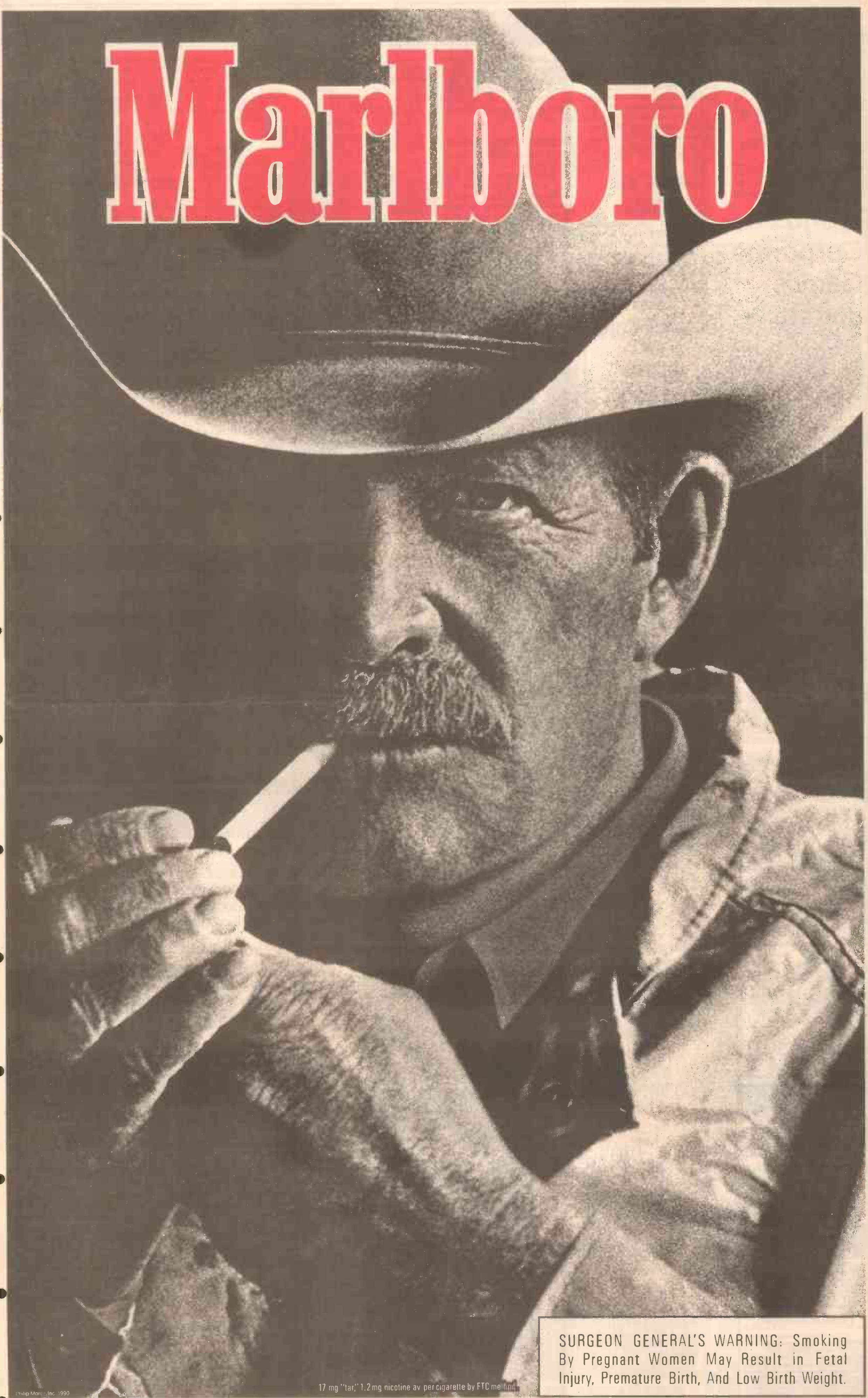
Yes! Please send me an application for the Marine Calling Card from MCI.

Name _____
Address _____
City _____ State _____ Zip _____
Telephone number _____
Signature _____
Mail to: Marine Calling Card Service Centers, P.O. Box 9020, San Ramon, CA 94583

MCI
Let us show you.

Marine is a United States Marine Corps for any other component of the Department of Defense has approved. MCI is a registered trademark of MCI Telecommunications Corporation.

Marlboro



SURGEON GENERAL'S WARNING: Smoking By Pregnant Women May Result in Fetal Injury, Premature Birth, And Low Birth Weight.

17 mg "tar," 1.2 mg nicotine av. per cigarette by FTC method.

Sports Shorts

New Gym Hours

The new hours of operation for the Main Gym are from 11 a.m.-1 p.m. and 4-8 p.m. Monday-Friday, and from 11.5 p.m. Saturday and Sunday.

Hula Bowl Sailing Regatta

The 2nd Annual Central Pacific Bank Hula Bowl Regatta In Honor of King

World Corporate Games update

Organizers of the 1990 World Corporate Games, a 20-sport, eight-day festival for corporate, club and military athletes reported today that hundreds of competitors from Hawaii and Mainland bases had entered the Games.

Biggest numbers are competing in the Road Running, Cycling, Triathlon and Bowling events, but strong entries have come from military squads in the Teams Sports also.

One of the reasons for the strong presence of military athletes is the \$25 entry fee, down \$75 from the standard Games fee of \$100 charged to civilian entrants. Military family members also qualify for the special rate.

Among Marine athletes entered in the Triathlon are Mark Reed, Christian Morrow and Robert Hayne. They will meet keen competitors from Navy, Army, Coast Guard and Air Force personnel. Reed, a Kaneohe Bay Marine will also challenge Barbours Point terrain in the Cycling Road Race and Time Trials.

There is still time to enter the Games as organizers, reacting to the Persian Gulf crisis, extended the deadline for military personnel in Hawaii.

Even though they get a reduced entry fee, all Armed Forces and dependent participants get every World Corporate Games benefit which includes nightly parties in Honolulu, a month's free membership to Gold's Gym, a chance to win trips to Lille, France for the 1991 Games and to Steamboat, Colorado for the 1991 Winter World Corporate Games, a souvenir shirt, books and gifts.

Entry forms can be picked up at the Main Gym. For more information call Games headquarters at 536-1990.

Kalaka'ua's Birthday will be held Nov. 18, beginning at 11 a.m. A variety of paddleboard, kayak, outrigger canoe paddling and outrigger canoe sailing races will be held. Each event will include Junior, Open and Masters men's and women's divisions. For more information call Carol Hogan at 326-1011.

Also, people using the fitness center (weight room) are reminded to bring their own towels when using the facility; attendants have the right to refuse admittance if towels are not brought.

Station Pool Hours

Recreational swimming at the Station Pool is scheduled 1-5 p.m. Mondays and Fridays and 10 a.m.-5 p.m. on weekends. Lap swimming is scheduled Monday through Friday from 11:30 a.m.-1 p.m. and 5-6 p.m.

IM Softball

An organizational meeting for Intramural Softball will

be held Wednesday at 1 p.m. in the Station Theater. A team representative must be present. For more information, call 254-2516.

Soccer Players Sought

The Hawaii Marine soccer team is looking for players for their team. Anyone interested can meet at Pop Warner Field Monday-Wednesday from 5-9 p.m., or call Cpl. Eddie Herrera at 257-5552.

Women's Soccer Team

Six players are needed for

the women's soccer team here on the Air Station. No experience necessary. A coach for the team is also being sought. For more information call Lisa Nelson at 254-6948.

Thursdays at the Station Pool. Cost for the sessions is \$18 a month or \$2 a class. For more information, call Jessica Kirtley at 254-2516.

Bowling League

An Officers' Wives' Bowling League is now forming. Anyone interested can call Bonnie at 254-3515 or Ann-Marie at 254-6099.

Varsity Men's Basketball Tryouts

Tryouts for the 1990 Hawaii Marine men's basketball team has been indefinitely postponed.

Attention Gym Users

The Station Gym is not open until 11 a.m. Mondays through Fridays. Units needing gear for a unit function should coordinate with the athletic director at least a day before the event

Lanes Baseball Cards and Comics

262-0597

MON. FRI. 1-7
TUE. CLOSED
SAT. 10-5
SUN. 11-4

418A Kuulele Rd. • Kalia
(behind McDonald's)

HAIR LOSS? BALD? THINNING HAIR?
WE HAVE THE SOLUTION!

STRAND-BY-STRAND
CALL TOM TODAY FOR FREE CONSULTATION

521-9906
By Appointment Only

NON-SURGICAL 100% HUMAN HAIR SWIM, SHOWER, PLAY ALL ACTIVE SPORTS

European HAIR REPLACEMENT
Executive Centre
1088 Bishop, Suite 601
Honolulu, HI 96813

OPEN Mon-Fri 9am-9pm Sat 9am-1pm

WIFE WANTED

Due to a massive overstock situation New Home Sewing Center is offering for sale to the public a limited number of new special 1990 HEAVY DUTY New Home Zig Zag Sewing Machines (MODEL 571R) that are made of METAL and sew on all fabrics. Levi's, canvas, upholstery, nylon stretch, vinyl, silk, EVEN SEWS ON LEATHER! No attachments needed for button holes (any size), monograms, awes on buttons, satin stitches, stretch stitches, darts, appliques and more... Just set dials and see magic happen without old fashioned cams or programmers. These HEAVY DUTY New Home Sewing Machines are suitable for home, professional or school room sewing, 25 year warranty. Head only. Your price with ad \$99, without this ad \$399. Check, cash, VISA/MasterCard accepted. 4 DAYS ONLY Sept. 5-8

NEW HOME SEWING CENTER 762 Kaplani Blvd. 524-6700
Free store front parking (Mauka between Ward & Cooke St.)



Flying into the Pro MCAS

The AT&T Military Calling Card— makes sharing the experience easy. It connects you to more places worldwide than any other long distance calling card.

• Call from most phones, anywhere. The AT&T Military Calling Card is the least expensive way to call next to direct dialing on the AT&T Long Distance Network.

• You don't need your own phone. It's easy to get the AT&T Military Calling Card. And once you have it, you don't have to reapply every time you move.

• It's free. So order today. Enjoy quick, clear connections, dependable operators 24 hours a day and the most reliable long distance service you can get—with the AT&T Military Calling Card. Just complete and mail the attached postage-paid application. For more information call:

1 800 551-3131 Ext. 1093

AT&T
The right choice.

PEEL-A-GRAM

- Anytime
- Anywhere
- All Occasions
- Bachelor/ Bachelorette Parties
- Birthdays
- Alohas

FOR INQUIRIES
239-5748

\$5.00 OFF

From 0 to XXX & Bathub

HAWAIIAN PHONE PERSONALS

"Talking" personal ads from local men & women. Now record your own ad using our private voice mail. Other callers record replies for you on our system. No need to ever give out your phone #.

Free info 948-4337
95/min.

1-900-454-3210

DEEP SEA FISHING AT ITS BEST!

The 44 fishing machine "KALONI" runs daily from Hahaione Bay Marine Pier (Pier 1) Harbor. We provide all the gear, you keep the fish.

EXPERIENCE THE THRILL OF A LIFE-TIME WHEN THAT BIG ONE BITE!

5 Passenger Exclusive Charter
\$328.00 Full 8 hour day

8 Passenger Exclusive Charter
\$265.00 Full 8 hour day

Overnight to Molokai \$2 hours

Weekdays & Weekends
Other prices available upon request.

All military, active duty, retired, DOD and government employees call the charter fishing office at 441 11th Street, Hahaione Pier (NAVERT) at 474-0126, 476-1188 for details. Reserve early and mention your charter # for priority. All reservations on a first come, first served basis. This ad not valid for Special Pier NAVERT.

YOU KEEP THE FISH!



Marine punches his way to Goodwill gold

By Sgt. Jim Fitzgibbons

Lt. Cpl. Sergio Reyes hant Bulgarian Serafim Todorov Aug. 4 to win the gold medal in the bantamweight class at the 1990 Goodwill Games in Seattle.

The spunky pugilist won three bouts, going unbeaten during the Games, all on 3-2 split decisions. In doing so, he knocked off the world's top two boxers in the 119-pound class.

Reyes pummeled the Bulgarian, who was considered second in the world in that class, during the finals. But the fight he considers his

crowning accomplishment was a surprise split decision in the quarterfinals over the reigning world champion.

The All-Marine, Interservice and U.S. Amateur champ, won a 3-2 decision over two-time world champion Enrique Carrion of Cuba. The win has been called the biggest upset in boxing during the Games.

The 20-year-old Marine cited his aggressiveness and constant pressure as the two major factors that swung the decision over Carrion his way, according to reports in several national newspapers. However, those reports in-

cluded comments from the Cuban, who said the decision was unjust but agreed that Reyes did pressure him during the bout.

The win was expensive for Reyes as he injured his right hand and was a question mark on the semifinal card until weigh-ins Aug. 1. Newspaper reports went so far as to say Reyes might be medically disqualified from fighting the semis. But the decision was left up to Reyes.

Reyes shook off the injury and relied exclusively on his

left to take another 3-2 decision and beat his Soviet opponent.

Going into the championship bout, the agile Marine had no doubt about his abilities and chances to win the gold. "I've beat the best in the world and I know I can beat the second best, too," Reyes said in a telephone interview from Seattle. "Nothing can stop me now because I'm hungry. I want to fight him right now."

In the championship, the 5-foot-3-inch Reyes penetrated

his taller opponent's defense and delivered a series of opportunistic head combos to the Bulgarian.

In a post fight interview with the cable network showing the Games, Reyes, who is unbeaten this year, credited his Marine Corps training and All-Marine Boxing Coach Roosevelt Sanders with giving him the abilities to win on an international level.

Reyes has been hoping to use the Goodwill Games as a springboard to the 1992 Olympics.

Someone in a wheelchair is waiting. You can make a difference.



Make your GFC pledge donation to the Paralyzed Veterans of America Spinal Cord Research Foundation (2218)

PRESTIGE TRAVEL UNLIMITED, INC.
 1513 YOUNG ST. SUITE #102 • PH. #945-7400
 * OPEN 7 DAYS A WEEK * DELIVERY AVAILABLE TO HON. & KAILUA *

	O/W	R/T		O/W	R/T
• LOS ANGELES	1144	1247	• SAN FRANCISCO	1144	1247
• SAN DIEGO	1158	1247	• SEATTLE	1149	1298
• MIAMI/NEW YORK	1274	1487	• CHICAGO/ST. LOUIS		1522
• ALLENTOWN/BUFFALO		1552	• BOSTON/WASH DC	1274	1487
• ALBUQUERQUE		1202	• COLORADO/SALT LAKE		1405
• OKLAHOMA/DALLAS		1552	• QUAM	1235	1459
• HOUSTON/AUSTIN		1233	• ATLANTA/SYRACUSE		1552
• TAMPA/ORLANDO		1512	• BANGKOK		1676

Call for Other Destinations

INTER-ISLAND COUPONS

HAWAIIAN \$218 **ALOHA \$225**

SOME RESTRICTIONS APPLY. PRICES SUBJECT TO CHANGE
 OPEN MON-FRI 9:00 AM-7:00 SAT-SUN 9:00 AM-3:00 PM

MARINA	FLARIDGEL	MILANI
0104115 & 1930 \$2.99 (200 CONT.) Sorry, No Packed	0104113 1302444 & 1000 \$ 18 & 10.00 Sorry, No Packed	0104106 \$ 204748 & 1000 \$2.100 CONT. No Return Policy, No Packed

CHARLIE SHEEN **EMILIO ESTEVEZ**

TWO GARBAROMEN WHO KNOW WHEN SOMETHING SMELLS FUNNY!

MEN AT WORK

PG 13

©1990 Epic Productions, Inc. All rights reserved. TRIUMPH

ARE YOU FRUSTRATED WITH TAXES or LOOKING FOR A NEW CAREER?

announcing...

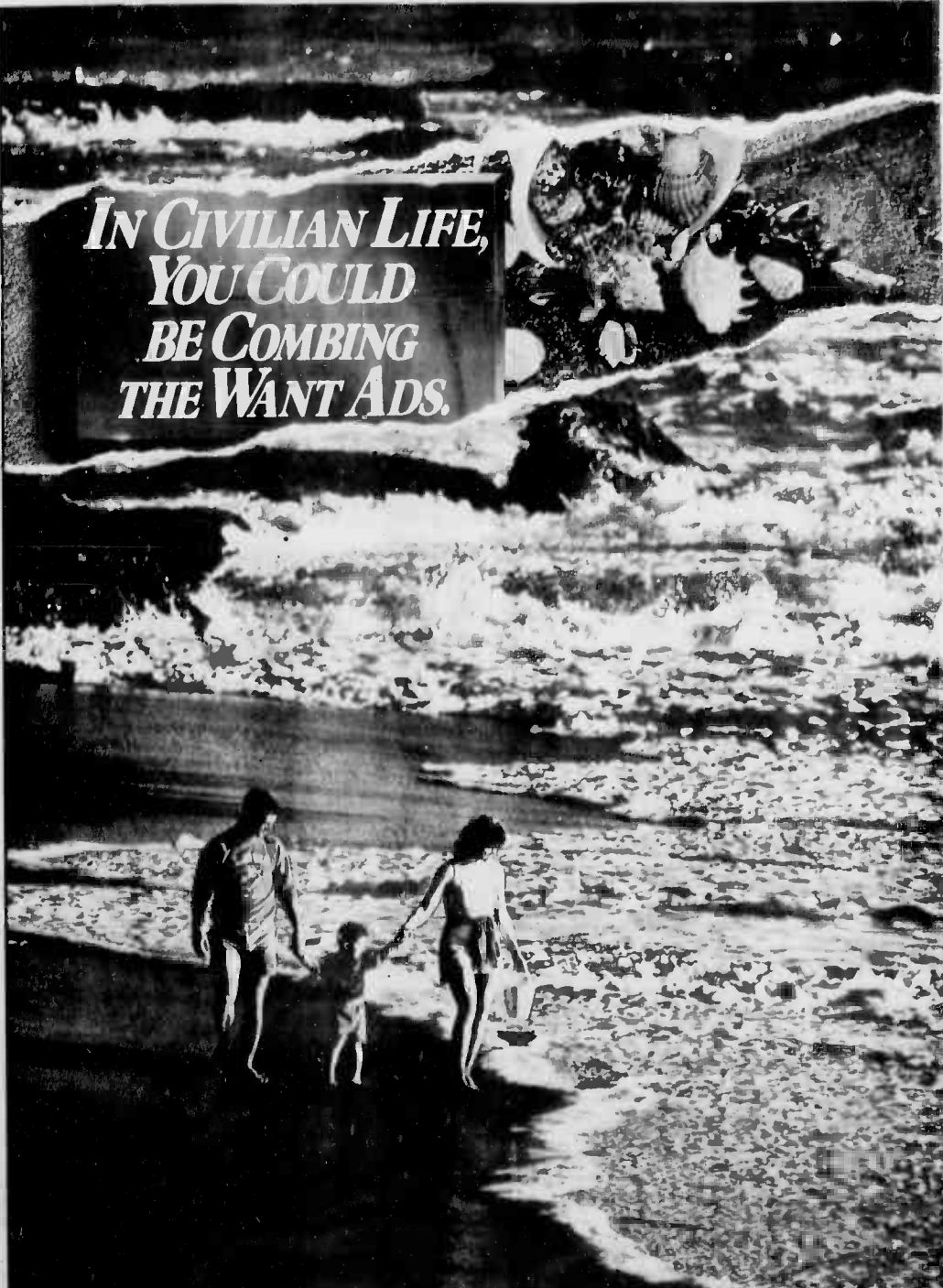
PENDLETON TAX COURSE

- Enhance Your Tax Knowledge
- Learn About the Exciting Career of Tax Preparation
- Day & Evening Classes

Limited Space Available

CALL TODAY 841-1725

JOINT CAREER PLANNING OFFICER 1stLt. C.W. THOME	257-2403
JOINT CAREER PLANNING NCOIC GySgt. D.D. HARTZELL	257-1252
JOINT CAREER PLANNING ANCOIC SSgt. C.B. JOHNSON	257-1250
JOINT CAREER PLANNING CLERK Cpl. W.O. FOSTER	257-1251
RESERVE PROCUREMENT LIAISON MGySgt. P.V. FREEMAN JR.	257-1314/1885
HQSVCCQ, 1stMEB SSgt. M. RODRIGUEZ	257-4180
HQCO, 3D MAR GySgt. K.E. BAKAMEYER	257-3287
1stBn, 3dMar SSgt. P.R. BOWERS	257-2310
2NDBN, 3D MAR Sgt. R. P. ZIGABARRA	257-5283
3rdBn, 3dMar SSgt. S. Q. AQUINO JR.	DEPLOYED
1stBn, 12thMar SSgt. J.R. GRISBY	257-2800
Co B, 7THCOMMBN SSgt. B.A. ATKINSON	257-5895
BSSG-1 GySgt. J.P. LACHANCE	257-5508
Sgt. A. C. LOPEZ	257-5507
MAQ-24 HQ GySgt. F.R. HENLINE	257-1372
MALS-24 SSgt. A. CRAWLEY	257-3696
MACS-2 SSgt. THOMAS	257-2995
MWSS-174 Sgt. L.E. PAOLETTO	257-3963
HMM-165 Sgt. K.E. DESQUE	257-0430
HMM-252 Sgt. V. HEREDIA	257-1946
HMM-265 SSgt. R.A. ROBINSON	257-4820
HMM-364 Sgt. J.L. ECHEVARRIA	DEPLOYED
HMH-483 SSgt. D.C. GODIN	257-1093
VMFA-212 SSgt. D.J. BENNER	257-9800
VMFA-232 SSgt. D.J. FURTADO	257-5820
VMFA-235 SSgt. E.B. FOXWORTH	257-1613
HQHQRON, MCAS GySgt. R. BRZUSKIEWICZ	257-5738
HAFB, MCAS SSgt. BROWN	278-5738
18TRADRN GySgt. J.A. PETERS	257-4550
SSgt. D.C. COATS	257-4650
CAMP H.M. SMITH GySgt. W. SAWYER	477-8885
MARINE BARRACKS Sgt. BORROW	471-9516
MARINE CORPS RESERVE	471-0202
MARINE CORPS RECRUITING Honolulu	546-7560
Kaneohe	247-8773



See your Career Planner

S T A Y M A R I N E

U.S. MARINE CORPS CAREER PLANNING

At A Glance

Family Salute

There will be a command-sponsored family event Sunday from 1-5 p.m. The Salute to the Navy/Marine Corps Family will be held in Building 219 and surrounding areas (courtyard, library, theater, and Dewey Square). The event will offer information, services and hospitality to the military families who are remaining on the Air Station during Operation Desert Shield.

ing and house guest passes. Temporary passes for sponsored guests and vehicles without decals may be obtained through the gate sentry 24 hours a day. For more information, contact SSgt. Hinton at 267-5904.

Kaneohe Bus Route Changes

To accommodate Air Station bus patrons, The Bus has altered its westbound route operating on Route 70 (Lanikai-Maunawili). The change was made because of the reduced hours of the Mokapu Gate. Westbound buses on North Kalaheo Ave. and Mokapu Road will detour by continuing across Mokapu Road onto Kaneohe Bay Drive. Buses will then turn right onto the H-3 ramp and in the H-3 Gate onto "G." They will turn right on

Mokapu Road, then right on Harris, right on Selden, veering left on Third, left on "G," exit H-3 Gate onto H-3, turn right to get on the off-ramp leading to Kaneohe Bay Drive, left on Kaneohe Bay Drive, resuming the regular route to Maunawili after crossing Mokapu Road onto North Kalaheo Ave.

Mokapu Gate Hours

The Mokapu Gate has new operating hours. It will be open from 6-8 a.m. and 4-6 p.m. Monday through Friday, and closed Saturday and Sunday. Arrangements can be made to open the gate under special circumstances.

College Refunds

The Windward Community College is giving full tuition refunds to all Marines and

seafarers in Operation Desert Shield and their dependents. For more information, call 235-7445.

Government Furniture Turn-in

Service families planning to move to the Mainland in anticipation of their spouse deploying to Operation Desert Shield are reminded to return government furniture to Family Housing. For more information call Joe Francese.

Spouse Scholarships Offered

The Awa Lau Wahine Officers' Wives' Club is offering two \$1,000 continuing education scholarships for any type of study beyond the high school diploma. It may be used toward obtaining an advanced degree or toward

obtaining instruction which trains for the job market. Any active duty or retired Navy, Marine Corps or Coast Guard spouse living in Hawaii is eligible.

The scholarship will be awarded in December to two applicants stating the best reasons for continuing their education. Financial need is not a criterion for the scholarship and applicants need not be enrolled in school at the time of application.

Deadline for applications is Oct. 15. Applications are available from:

Judy Brown
15 Palmyra Drive
Honolulu, HI 96818
Phone: 422-9327

Support Group

There is a Pregnant Wives' Support Group forming. For

more information call Cheryl Carpenter at 235-7588.

Free Concert

"The Party" will be performing in a free concert Saturday at 4 p.m. at Kapiolani Park Bandstand. The five-member singing group is a spin-off of the New Mickey Mouse Club and currently has a single on the charts called "Summer Vacation. For more information call 531-4602.

Check Out the Hale Koa Luau

The Hale Koa Luau is being held every Monday and Thursday evening until the end of August. Festivities begin at 5:30 p.m. and dinner starts at 6:30. The cost is \$21.95 for adults and \$12.95 for children under 12. Tickets are available at the MWR Ticket Office.

Pass & Registration Hours Change

The Pass and Registration Office, located at the H-3 gate, is now operating under new hours. The office will be open Monday-Friday, 7 a.m.-5 p.m. and closed Saturday and Sunday. The services most effected are vehicle, weapons, and bicycle registration, and issuing of fish-

ROBERT B. ANSON

ATTORNEY AT LAW

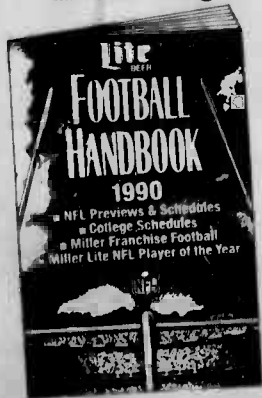


- LICENSED IN HAWAII & CALIFORNIA •
- ★ DIVORCE
- ★ REAL ESTATE
- ★ BUSINESS LAW
- ★ BANKRUPTCY
- ★ CHILD CUSTODY/ SUPPORT MODIFICATION
- FREE INITIAL CONSULTATION
- (Evening & weekend appointments available.)

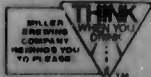
88 064 Kam Hwy., Suite 302
(In Territorial Savings & Loan Bldg.)

Aiea 486-6170 Pearl City

ONE OF THE BEST CATCHES IN THE NFL.



To pick up your own FREE copy of the Official NFL Handbook from Miller, simply stop by the Party Zone display wherever you buy Miller High Life, Miller Lite or Miller Genuine Draft. You can only get it through Labor Day. Pick up your copy today! Avoid the rush.



Tama's Polynesian Revue... Feel the beat of the South Pacific.

Tama's talented troupe of entertainers takes you on a fantastic musical voyage of the South Pacific. It's Waikiki's most exciting Polynesian revue. At the Hale Koa.

Start your evening with tempting selections from our magnificent buffet, including carved roast baron of beef and specialties from the Islands and the Orient. Then let yourself be carried away to distant, colorful lands. And charmed by exotic chants. Hypnotized by graceful hula. Thrilled by the pounding Tahitian

drums. This is one night in paradise you won't forget. Just \$15.95 for adults, includes dinner, show and gratuity. Children under 12, \$7.50. Every Wednesday and Sunday in the Banyan Tree Showroom. Dinner from 6-7:30. Show at 8.

Purchase tickets up to four weeks in advance at our Activities Desk or any Military Ticket Outlet.



Feels like paradise!

HALE KOA HOTEL

Armed Forces Recreation Center
On Waikiki Beach at Ft. DeRussy - 2095 Kalia Road
955-0555

Listen to what our children are saying.



Dear Hawaii Nature Center,
I am glad that the soil soup we made will help the plants and trees grow green and tall. I am glad it was not my lunch. I liked it when our guide John told us to be very quiet and open our ears to all the sounds around us. I liked the quiet and I think the earth sounded very busy to me.
See you soon. Lindsay



Children are learning a lot about the nature of our world at the Hawaii Nature Center. You can teach them. Volunteer your time at the Hawaii Nature Center. The children and our earth need you now. Please call us at 973-6166.

HAWAII NATURE CENTER

Ten minutes from the beach in Waipahu in Waikiki Valley

Salutes

HQSVCCo, 1st MEB
 Promotions
 LCpl. T.A. Wildenstein

Good Conduct Medal
 Cpl. E.D. Andes

HMM-265
 Promotions
 LCpl. A.R. McElfresh

Meritorious Mast
 LCpl. G. Reyes
 LCpl. J.J. Wynne

HMM-185
 Promotions
 Cpl. J.B. Kimbro
 Cpl. J.M. McCrae
 Capt. K.L. Miller
 Capt. M.C. Young

Good Conduct Medal
 Cpl. Jesus Blancarte

Meritorious Mast
 Cpl. Jose Gomez
 LCpl. A.M. Gruenemeier

HQHQRON
 Good Conduct Medal
 Cpl. J.L. Lee
 Sgt. T.A. Brady (2nd award)

VOTE

Olga

BOARD OF EDUCATION

BARGAIN AIRFARES

732-5533

•LOS ANGELES	•SAN FRANCISCO	•SAN DIEGO	OW	RT
•NEW YORK	•BOSTON	•WASH DC	\$139	\$248
		•PITTSBURGH	270	478

Seattle \$298	Manila \$728	LAS VEGAS \$378
Phoenix \$310	Seoul \$607	4 days/3 nights (PanAm)
Salt Lake \$435	Taipei \$700	DISNEYLAND \$324
Kansas City \$478	Bangkok \$735	Air/2 nights hotel only.
Houston \$428	Hong Kong \$700	Per person sharing twin.

Call for fares to other destinations

ROYAL ADVENTURE TRAVEL
 2612 Harding Avenue, Suite 101, Honolulu, Hawaii 96815

BONKERS


51 Flavors Yogurt HoP

OVER TO BONKERS FOR A BACK-TO-SCHOOL TREAT!

Pints, Quarts and Frozen Pies available. Pick up a gift certificate and T-shirt today!

Sun-Thru 10:00 AM to 10:00 PM
 Fri and Sat 10:00 AM to 11:00 PM

261-0535
 201 Hamakua Drive
 Across from Safeway
 Adjacent to Carnival Carnival.




ASK ME HOW TO DROP WEIGHT.

Pure and simple. If you want to lose weight without putting your body through the torture and pain of a rigorous diet and exercise program. **Drop Drops** is the answer. Just 4 drops in a glass of water three times a day increases your appetite dramatically.

30 DAY MONEY BACK GUARANTEE
CALL TODAY & START LOSING WEIGHT TOMORROW!
263-3637
FAX: 261-0630

Ask me how you can become a distributor & make money too!

If arthritis isn't so serious, why is it costing America over 14 billion dollars a year?



TIRE QUALITY IN HAWAII

13 YEAR SUMMARY* 1978-1990

TIRE BRAND	NUMBER OF TIRES EXAMINED	FAILURE RATE
Michelin	16,482	1.0%
Sears	1,202	1.9%
Toyo	5,358	2.3%
Bridgestone	8,041	5.2%
General	2,387	7.1%
B.F. Goodrich	3,491	8.0%
Goodyear	5,398	9.4%
Uniroyal	4,341	9.7%
Firestone	5,000	10.9%
Pirelli	1,591	15.5%
Dunlop	2,862	15.9%
Continental	2,219	30.7%
All Others	7,041	12.9%

TOTAL 65,413 7.5%

*During the early months of each calendar year, skilled personnel at Lex Brodie's Tire Co. carefully examine the first 5,000 steel radials that come in for replacement. Unfortunately, a significant number of these tires are units that have failed prior to tread wearout. Moreover, most of these tire failures are caused by either inferior factory workmanship or materials and / or car owners neglect.

September 2, 1990

HONFED BANK

Dear Families of Military Active Duty, Reserve & National Guard Personnel,

At Honfed Bank we are aware of the difficulties that separation can impose on the families of personnel sent overseas or called to active duty.

Times like these call for everyone to do their part. We at Honfed want to help military personnel sent overseas, reservists called to active duty, and their families deal more easily with their financial obligations during this period.

Honfed has, therefore, established an information line for all dependents of military personnel sent overseas and reservists called to active duty -- customers and non-customers alike. Please visit one of our branches or call us at 545-6125 and let us know you are a member -- or dependent of a member -- of the active military, the Ready Reserve, or the National Guard. We will do our best to answer any questions that you may have relating to financial matters, including information on ensuring access to funds and loan servicing.

We at Honfed Bank hope that all of your lives can return to normal as soon as possible. If we can help you in the interim please call us. In addition, to show our support of you and your families, Honfed Bank will proudly wear buttons displaying the American flag during this period.

Sincerely,

Gerald M. Cesarnecki
 Gerald M. Cesarnecki
 Chairman and Chief Executive Officer

M. Charles Armstrong
 M. Charles Armstrong
 President and Chief Operating Officer

William M. Borthwick, Jr.
 William M. Borthwick, Jr.
 Vice Chairman

188 Merchants Street • P.O. Box 539 • Honolulu, Hawaii 96809 0539 • Telephone (808) 546-2200
 A Federal Savings Bank • Insured by the FDIC • An Equal Opportunity Lender

A message from Honfed Bank.

TIRE BRAND	1978 FAILURE RATE	1979 FAILURE RATE	1980 FAILURE RATE	1981 FAILURE RATE
Michelin	1.3%	1.1%	0.5%	1.0%
Sears	—	—	—	—
Toyo	—	—	—	—
Goodrich	8.4%	5.5%	2.4%	5.5%
Bridgestone	1.7%	0.8%	1.2%	1.2%
General	10.9%	3.4%	10.8%	4.8%
Uniroyal	18.8%	11.2%	5.5%	8.4%
Firestone	26.2%	10.8%	8.7%	5.0%
Goodyear	21.8%	18.0%	12.3%	10.6%
Pirelli	20.2%	18.6%	12.0%	9.4%
Dunlop	32.8%	21.3%	14.2%	13.8%
Continental	42.8%	26.4%	26.6%	23.7%
All Others	21.2%	10.8%	9.8%	8.7%
TOTAL	17.4%	9.9%	7.7%	6.4%

TIRE BRAND	1982 FAILURE RATE	1983 FAILURE RATE	1984 FAILURE RATE	1985 FAILURE RATE
Michelin	0.4%	1.0%	2.8%	1.6%
Sears	2.5%	1.0%	3.3%	2.0%
Toyo	4.3%	5.0%	3.4%	4.4%
Goodrich	8.5%	6.8%	7.3%	16.9%
Bridgestone	13.7%	6.7%	11.2%	7.5%
General	21.1%	9.2%	9.2%	6.6%
Uniroyal	14.2%	10.0%	8.4%	16.2%
Firestone	10.8%	8.7%	13.3%	8.0%
Goodyear	13.1%	8.7%	5.8%	6.8%
Pirelli	18.8%	10.9%	23.4%	2.8%
Dunlop	20.0%	16.0%	24.0%	16.2%
Continental	43.9%	45.2%	50.0%	22.8%
All Others	16.4%	11.5%	14.1%	17.1%
TOTAL	11.3%	7.4%	9.4%	8.4%

TIRE BRAND	1986 FAILURE RATE	1987 FAILURE RATE	1988 FAILURE RATE	1989 FAILURE RATE
Michelin	1.0%	0.6%	0.5%	0.8%
Sears	0.0%	2.5%	0.6%	2.8%
Toyo	5.2%	1.6%	0.9%	0.9%
Goodrich	4.3%	9.2%	7.0%	9.3%
Bridgestone	4.8%	4.9%	1.9%	2.0%
General	6.2%	1.7%	2.7%	3.9%
Uniroyal	6.2%	4.8%	2.8%	3.9%
Firestone	6.5%	4.8%	4.7%	5.8%
Goodyear	4.1%	1.1%	0.6%	1.6%
Pirelli	15.2%	4.1%	2.3%	9.0%
Dunlop	14.8%	9.9%	11.1%	4.8%
Continental	21.1%	20.0%	24.6%	9.8%
All Others	13.4%	20.7%	9.4%	7.2%
TOTAL	9.4%	4.4%	3.2%	3.1%

TIRE BRAND	1990 FAILURE RATE
Michelin	1.0%
Sears	4.9%
Toyo	4.2%
Goodrich	14.6%
Bridgestone	2.9%
General	12.6%
Uniroyal	6.8%
Firestone	6.9%
Goodyear	4.1%
Pirelli	13.8%
Dunlop	9.3%
Continental	13.8%
All Others	6.8%
TOTAL	3.8%

(*This table also corrected for wear)

We suggest you save this information for future reference before buying new replacement tires.

Lex Brodie's

TIRE COMPANY

HONOLULU
 701 Queen St.
 PH. 536-9381
 MON.-SAT.
 8:00-5:00 P.M.

WAIPAHU
 94-189 Farrington Hwy.
 (Next to McDonald's)
 PH. 671-4541
 MON.-SAT.
 8:00-5:00 P.M.

Religious Services

Kaneohe Bay
257-3552

Weekdays
11:45 a.m. — Catholic Mass

Saturday
6 p.m. — Catholic Mass

Sunday
7:30 a.m. — Catholic Mass
8:30 a.m. — Protestant

Communion
9:30 a.m. — Sunday School (bldg. 1391)

9:30 a.m. — Catholic Mass
11:30 a.m. — Protestant

Camp H.M. Smith
477-5098

Sunday
8 a.m. — Catholic Mass
9:30 a.m. — Protestant

Worship
9:30 a.m. — Protestant Sunday School

Tuesday
11:30 a.m. — Catholic Mass

Wednesday
5:45 a.m. — Prayer Breakfast
7 p.m. — Choir Rehearsal

Aloha Jewish Chapel
Pearl Harbor
471-0050

Friday
8 p.m. — Shabat

Saturday
10 a.m. — Shabat and Torah Study

Marine-O Pizza

We're Open Daily 1100-2200 hrs.
Fri. & Sat. 1100-2300 hrs.
For Walk-in and Take-Out Orders
Delivery Service from 1700-2100 hrs.
Fri. & Sat. 1700-2200 hrs.

PIZZA CARNE
6 MEAT TOPPING FOR 1 SPECIAL PRICE!
Pepperoni, Canadian Bacon, Beef, Ground & Chunk Sausage & Ham

Small \$7.50 Med. \$10.40 Large \$12.00
Save \$1.70 Save \$1.86 Save \$3.90

Call 254-1537, 254-1538, 254-1539 CONVENIENTLY LOCATED NEAR PACKAGE STORE!

PIANO LESSONS

247-6010

JOHN SCHOUTEN 45-270 Waikalua Place, KANEHOE
EXPERIENCED • PROFESSIONAL • BUT NOT EXPENSIVE


LAW OFFICES OF
JOSEPH P.H. AHUNA, JR.

CALL IF YOU ARE:

- Injured in an **Auto Accident**
- Suffering from **Personal Injury**
- Suffering from **Serious Injury or Death**

FREE INITIAL CONSULTATION
NO FEE FOR REPRESENTATION UNLESS
YOUR CASE IS DECIDED IN YOUR FAVOR

235-4000



Joseph P.H. Ahuna, Jr.
Attorney at Law

The Kaneohe Atrium Bldg.
46-005 Kawa Street, Suite 101
KANEHOE • HAWAII

AFRAID TO QUIT?

OPPORTUNITIES IN THE CIVILIAN WORLD ARE Expanding!

IS your career tied to a constricting market? Are your career goals realistically achievable in the military? If you think so, fine—pursue it!

If you'd like to explore possible civilian opportunities in Hawaii or elsewhere in the world, give us a call...

As career consultants to executives and professionals for over 20 years, we have helped hundreds of military personnel effect successful transition into civilian life, plan careers in business or service areas, and move ahead toward selected ultimate goals.

No cost to talk—no obligation! Let's explore your potential and look at some alternatives, other lifestyles—and how/where your military experience can be translated into profitable background for a real good opportunity in civilian business or service communities.

WE (help) change lives!

DUKAY

MANAGEMENT CONSULTANTS
CAREER PLANNING & DEVELOPMENT
1314 S.King St., Suite 1263, Honolulu, HI 96814
(808) 531-4772



Grand Re-Opening CELEBRATION

September 1990
Introducing our

SPORTS BAR and ALL NEW MENU

Florence's

Italian Restaurant
261-1987 • Kaneohe St. • Kailua
Across from Kentucky Fried Chicken

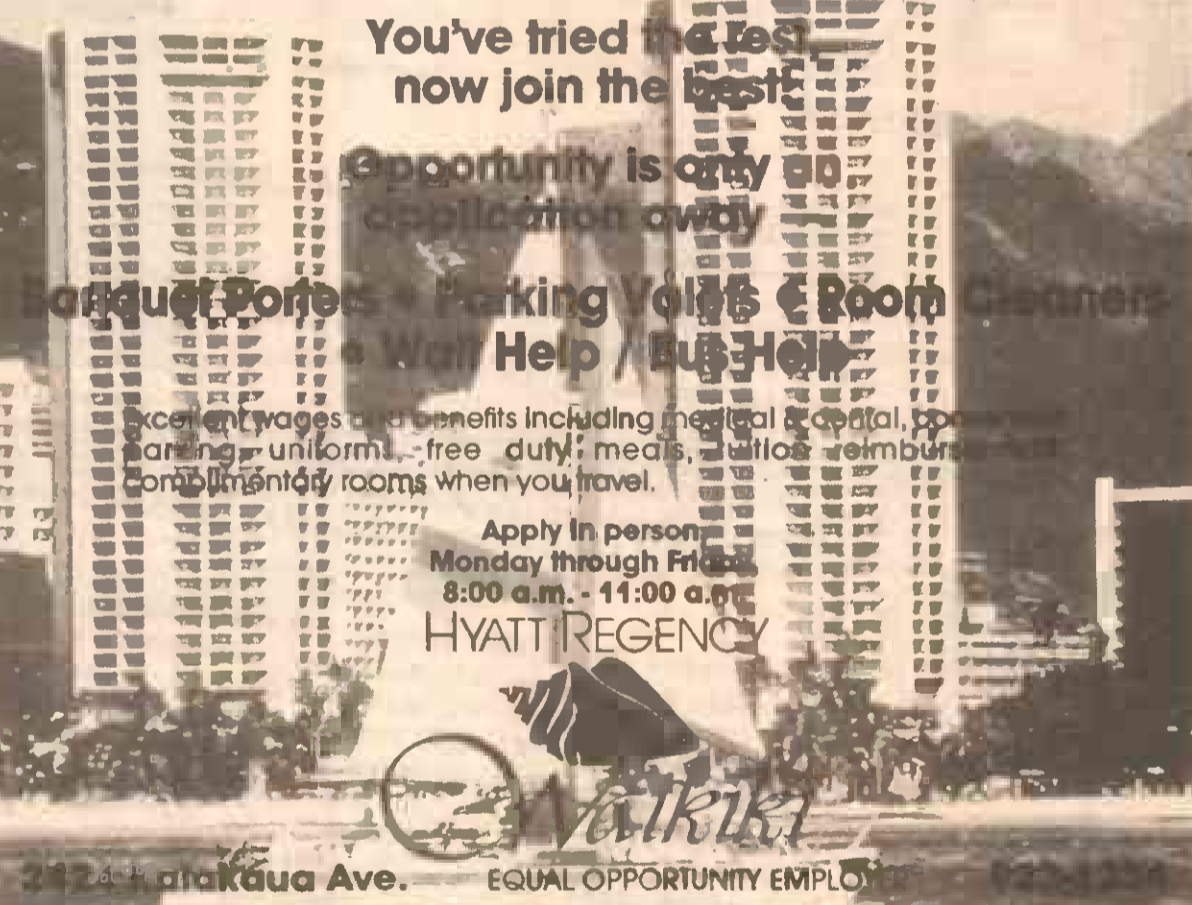
THE CLASSIFIED INDEX

Telephone Service 235-5656 Mon.-Fri. 8 a.m.-5 p.m.	Counter Service 45-525 Luluku Kaneohe Mon.-Fri. 8 a.m.-5 p.m.	Deadlines: Line Ads due by 12 Noon - Tuesday Class Display Ads due by 4:00 p.m. Friday CANCELLATIONS & CORRECTIONS due by 12 Noon-Mon.	Important Information: <small>Please check your ad on the first day and bring any error to the attention of Classified immediately. RPD Publications assumes responsibility for errors in copy for the first insertion only, and any adjustments or credit will not exceed the value of the ad. The publisher assumes no further liability and the advertiser expressly waives any and all claims of consequential damages due to errors. RPD Publications cannot assume responsibility for the claims or performance of advertisers.</small>
--	--	---	--

It's so easy to make extra cash with classified

DONATE PLASMA FOR \$100/Mo. CASH

3179 KOAPAKA STREET
PLASMA DONOR CENTER OF HAWAII
836-0647
For More Information



You've tried the rest now join the best

Opportunity is only an application away

Hyatt Regency

Apply in person
Monday through Friday
8:00 a.m. - 11:00 a.m.

HYATT REGENCY

2725 Ala Moana Ave. EQUAL OPPORTUNITY EMPLOYER

0 Free Bees

FOUND 5 to 6 mo. old female black pup., app. 20 pds. Had brown collar on. 254-4817

FOUND Solid gray cat, gold eyes, Scottish fold, British blue. 262-8344.

FREE 2 laying hens & pair Peking ducks. Call 254-2290.

FREE: kittens, to good homes, 8 weeks old. shots. Call 239-5132.

FREE: to good home, orphaned female kitten, 6 mo., gray/whit. 672-6444

FREE: "Animal Lovers" DOGS & PUPS of all kinds. All ages & sizes. All shots & health guar. All spayed & neutered. 696-4357 lv. msg. We are the 1st NON-KILL animal shelter that urgently needs your tax deductible contributions to continue saving lives. Please mail to: K-9 Rescue, P.O. Box 1602, Wainane, HI 96792. VOLUNTEERS NEEDED.

0 Free Bees

FREE: basic obedience training. Sponsored by K-9 Rescue League for West Coast residents of Oahu. Dogs of all ages welcome. Must have all current vaccinations. Every Sat. in July & the first 2 Sat. in Aug. For more information call, K-9 Rescue League 696-4357 lv. msg.

FREE 2 white lab/terrier sisters, spayed, 1 yr. needs permanent home together. 668-7222.

FREE: to good home, male Retriever/Shepherd, 8 mos. old. 235-0109.

FREE: Black & grey retriever mix, 7 mo., good w/kids. To a good home. 624-2615.

FREE: to a good home. Pol dog, female, 2 1/2 yrs., neutered, lovable, spoiled. 422-6177.

0 Free Bees

3 Aviation

AAP — I.A. RATINGS
• 8 days. Guaranteed!
• Includes Oral & Practical Review
• Day & Night Classes

ATP — FE
• 2 days
Classes starting OCTOBER 8
HONOLULU AIRPORT
1-800-345-2742

4 Health & Fitness

ELECTRIC Beach tanning Salon 212 Merchant St. #3310. 599-5999. Introductory offer to 1st time tanners. 60 min. of tanning time for \$9.95 + tax w/ad only. Call Now.

YOU Deserve it! Treat yourself to a massage now. 951-8330 MAE795

15 Announcements

TIRED of struggling with just one car, or no car at all? Burned out on The Bus?? Our specialty is selling reliable pre-owned cars for under \$1000. We also have many under \$500. Come on down & check us out, you won't believe the deals!
Hee Haw, we're the Mule Skippers
Kaplan Mule Pre-owned Car Dealer
235-9999

25 Personals

ST. JUDE'S NOVENA
May the Sacred Heart of Jesus be adored, glorified, loved and preserved throughout the world now and forever. Sacred Heart of Jesus pray for us. St. Jude, worker of miracles pray for us. (Also please include these directions: Say this prayer 9 times a day. By the 8th day your prayer will be answered. Say it for 9 days. It has never been known to fail. Publications must be promised. Thank you St. Jude for prayers answered, and the main one to be answered!)
M.M.

SHORT ON CASH? EASY MONEY PAWN
CALL 839-2005
3180A KOAPAKA ST.
Behind Airport Plaza Hotel

PSYCHIC READINGS
Questions answered about love, \$ life Readings anywhere on island or over phone. Sacred spot readings
Carole Prism 638-5571

PSYCHIC READINGS
One of America's best Reincarnation/Karmic/Mission Readers. Just moved to Hawaii. Private Trance Sessions, Tarot, Numerology, Name chg, "MISSION COUNSELING". Couples readings & house calls avail. Vanessa Taima-Lord 262-1386 (10am-8pm).

DIVORCE
Serving Oahu Since 1977
\$12500
595-2533
Staff Attorney
Gene Bridges
A Public Service Project

50 Business Opportunities

A CHALLENGE: Do you have the courage to be rich? 948-4276, 24 hr. recording.

HONEST & LEGITIMATE earnings, free package details. SASE: P.O. Box 86-262, Alahimi St. 96792.

HOW to obtain free advertising, mail lists plus much more. For complete set up. Send \$1 to AMH Distributors P.O. Box 964 Kailua, 96734

58 Schools & Instruction

ACT I Production
Singing, Dancing, Acting
Call 261-0457.

CERAMIC Classes, Wed. 7-9 pm. Specialize in centerpieces. 262-8862.

PIANO Lessons
A happy learning process. Master teacher. BMus. Juilliard A.R.C.T. studio/parking 942-8004.

Write an Ad that Works!

FREE Classified Advertising Special —
Buy 7 weeks & receive the 3rd week FREE!
Call the Sun Press/Midweek Classified Department for details of 235-5656

Name _____
Address _____
Bus. Ph: _____ Home Ph: _____
 VISA MasterCard No. _____ Exp. _____

PLACE YOUR AD HERE
Allow for each letter, punctuation or space. Please do not abbreviate. Please run this ad in your next issues of Sun Press & MidWeek.

MINIMUM 3 LINES PER AD

FIRST LINE	2	3	4	5	6	7	Classification #

No. of Lines _____ x Cost per line _____ x No. of weeks _____ **TOTAL COST** _____
Payment must accompany your ads

Sun Press MidWeek 45-525 Luluku Rd. Kaneohe, HI 96714 235-5656

58 Schools & Instruction	58 Schools & Instruction	58 Schools & Instruction	58 Schools & Instruction
EXP. TEACHER now taking piano & organ students. 623-8390.	PIANO lessons, ex-elementary teacher BA in music seeks interested students phone 396-6137.	OPEN Water Dive Course. Certification Paid \$100 includes everything. Call 235-4105 Bob.	PIANO Instruction Juilliard M. Music. 538-9985.

CHESHIRE OPERATOR

Full time Direct Mail Processor needed immediately.

Experience preferred but not necessary in this challenging position. Work for one of the islands largest direct mailers and enjoy excellent pay, profit sharing, medical & dental benefits.

Apply at 45-525 Luluku Road In Kaneohe, M-F, 8am-5pm

Equal opportunity Employer M/F

10 Cemetery Plots

4 MILLANI plots. \$2000 ea. Will sell for \$1100 ea. Prime location. 923-8899

VALLEY of the Temple, Holy Cross Area \$1000. Call 262-8396.

15 Announcements

Aloha Pawn
(Buy, Sell, Loan, Trade)
Come see us for best deals in Wahiawa
Ph. 622-2898
540 California Ave.

FREE
Mini-Psychic Phone Reading 7-10 pm ONLY.
Prof. services avail.
944-8063.

IF If you want to drink, that's your business. If you want to stop, that's ours. Call 946-1458. Alcoholics Anonymous.

ARE you worried or troubled? Psychic readings by phone. Diane can tell you your past, present & future. Advise on problems. One call will convince you! 813-747-1849

MARRIAGES Legally performed anytime, anywhere. Very reasonable rates. Parks, beaches, waterfalls, etc. EVEN UNDER WATER. 259-5429.

PERMANENT Weight Loss! Certified Hypnotic therapist. Call 261-4595.

WOULD
You like to earn \$1000 (\$2000)/mo. in your spare time?
537-6581

30 Income Tax

LATE TAXES, past yrs. in your home. svc. Steve White MBA, 395-7141

58 Schools & Instruction

ACT I Production Singing, Dancing, Acting Call 261-0457.

CERAMIC Classes, Wed. 7-9 pm. Specialize in centerpieces. 262-8862.

PIANO Lessons A happy learning process. Master teacher. BMus. Juilliard A.R.C.T. studio/parking 942-8004.

MEDICAL ASSISTANT Training in less than 1 year. Free placement assistance. Financial aide available. Call 524-3363.

58 Schools & Instruction
SEWING made fun in lessons start now.
TEENS/LADIES, come & join our fun group.

60 Help Wanted Male/Female
CROSSING Guard for Le Jardin Academy, 7-8am.
DENTAL Receptionist, Full time position in McCully.

60 Help Wanted Male/Female
GROUP LEADERS
A self awareness course designed around substance abuse is looking for a group facilitator who has some knowledge of group dynamics.

COULD WE GIVE YOU A FEW TIPS ON MAKING MORE MONEY?
Be a Pizza Hut crewmember and start cashing in on the good times we provide to people of all ages.

SAFeway PHARMACISTS
For KAUAI and OAHU STORES
Earn \$24 per hour
Send confidential resume to: SAFEWAY TRAINING SCHOOL

59 Employment Opportunities
ATTENTION: HIRING!
GOVERNMENT JOBS- YOUR AREA! MANY IMMEDIATE OPENINGS WITHOUT WAITING LIST OR TEST!

60 Help Wanted Male/Female
EARLY Childhood teacher, F/T afternoon, needs Ass. ECH, CDA, or Bachelors.

60 Help Wanted Male/Female
HOUSECLEANER exp., honest, reliable, dependable. Can communicate, take constructive criticism.

60 Help Wanted Male/Female
MILITARY SPOUSES DEPLOYMENT BLUES??
Learn new skills Receptionist, Clerical, Sec'y, Accounting Clerk.

60 Help Wanted Male/Female
PHONE Personnel, P/T, \$5.75 per hr. Domino's Pizza Inc. Call before 4pm or after 8pm or apply in person.

60 Help Wanted Male/Female
TEACHER'S Assistant Preschool, Kailua for applications call 537-9551, 9am-12noon.

60 Help Wanted Male/Female
\$7 TO \$10 AN HOUR. Immediate openings. Domino's Pizza Delivery Drivers. Must be 18 or older.

PILOTS MECHANICS
Nationwide/Worldwide Aviation employment opportunities. Free Brochure Call Toll Free (800) 543-5201

HOUSEKEEPERS, Waitresses/Waiters, Diet Aides, Nursing Assistants, P/T days, P/T nights.

NEWSPAPER PASTE-UP
Person to work with advertising & page makeup. Experience preferred but not necessary.

60 Help Wanted Male/Female
RECEPTIONIST needed for Kailua computer firm, P/T to start, Career potential, 266-0022

TEACHERS ASSISTANT AIDES
Sunrise Preschools is looking for quality professionals to work in clean new facilities.

60 Help Wanted Male/Female
AVON Intelligents? Brains pay High salary! P/T Admins. Ass't. 395-5555

ENERGETIC assistant wanted for friendly down to earth dental practice, flex hrs. F/T or P/T, good starting pay, willing to train. 947-8888

HOUSECLEANER wanted-KMCAS. No exp. nec., will train. Call 254-3541.

60 Help Wanted Male/Female
Nurses RN's, LPN's, Aides Highest pay, great benefits. Transfer privileges, national company, flexible hours.

60 Help Wanted Male/Female
SHOP MANAGER TECHNICIANS
If you are interested in working for a people oriented company opening soon in Kailua or Waimanalo.

TELEMARKETERS
9 needed. Salary + commissions. Benefits. Flex. hrs. Call 735-6452

60 Help Wanted Male/Female
AVONI Earn X-mas \$8 Products at disc. Call Ass't Mgr. Char 834-2835.

ESTABLISHED Kailua business needs a friendly outgoing person to assist customers & to perform various office duties. F/T 9am-5pm. 261-3963.

TEACHER-MONTESSORI
Certified for Pre-school at Pearl Harbor. Call 696-4339, lve. msg

60 Help Wanted Male/Female
ASST. SUPERVISOR
Responsible individual to supervise 12 persons. Record keeping, able to handle problems, organized. \$1350/mo. Excellent benefits.

60 Help Wanted Male/Female
SPARE time bus. venture. People help people earn income. \$53-5485.

64 Domestic Help Wanted
COMPANION Aide, F/T & P/T positions for elderly lady. Mililani 623-4246.

60 Help Wanted Male/Female
AVONI Own business Be your own boss! Cash gifts. Kandy 235-7641.

MADE IN HAWAII
Windward F/T & P/T avail. 7:30-4pm. Mon-Fri. Assemble & finishing for souvenirs.

60 Help Wanted Male/Female
DRIVER
Able to operate & maintain step van. Very responsible person in good cond.

60 Help Wanted Male/Female
TELEPHONE SOLICITOR
No sales telephoning calling. Interact well w/ others. P/T day & evenings. \$4.50/hr. + bonus.

60 Help Wanted Male/Female
SPARE time bus. venture. People help people earn income. \$53-5485.

64 Domestic Help Wanted
HOUSECLEANER needed KMCAS, bi-wkly., refs. req. 254-2599 eves.

60 Help Wanted Male/Female
CARPENTRY, Elec., Plumbing & more. Lanais enclosed. Free est. To \$100. Call Mark CM&R Co. 226-9170/955-3499.

CARPETS
AM PM Carpet Service 1. Carpet sales 2. Installations new/used. 3. Repairs & restitches. Free est. 224-2350.

60 Help Wanted Male/Female
CONTRACTING & Construction
CHRIS Contracting Inc. Specializing in custom home building. All phases of construction.

60 Help Wanted Male/Female
HANDYMAN
JL Handyman Svc. Home repairs & renovation, termite, water rot damage, carpentry, plumbing, elec., ceramic tile, drywall painting. 236-0052

60 Help Wanted Male/Female
PAINTING
PAINTING by Jorge, 7 years, experience fast quality work, reasonable rates. Call for free est. at 254-2523, To \$100

64 Domestic Help Wanted
BABY SITTER NEEDED! BY MONDAY SEPT. 10!
Adorable 8 mo. old boy. Mon.-Fri. 7:30am-5:15pm. Exp. Lic. required. Prefer Kaneohe area. Call Melody, 293-7782 eves. or 235-5881 days.

ON THE RUN?
Dry Carpet Service is offering a hot summer deal on cleaning \$17.00 per room. So call today and take advantage of this super saver.

CARPETS
HOUSECLEANING/ move out. Call Lori for free est. at 262-2247.

60 Help Wanted Male/Female
ELECTRICAL
CEILING Fan Installation, Free estimate. Call 395-0395, # C6052.

60 Help Wanted Male/Female
PAINTING
ISLAND Budget Painting & mildew wash. Call for \$100. Ins./Refs. Summer Savings. 239-5058

60 Help Wanted Male/Female
PLUMBING
KANEHOE Plumbing, Repairs & remodeling. Lic. C9153. 239-9262. Free Est.

64 Domestic Help Wanted
BEST Buddies Childcare. Safe, fun, reliable. 2 yrs & up. P/T. Kailua/Aikahi. 254-3637

LABORER FIELD WORK, FULL-TIME, MONDAY thru FRIDAY AT MAUNAWILI AGRICULTURE STATION \$7.86 per hour w/benefits. HAWAIIAN SUGAR PLANTERS ASSOCIATION Call Jim Lesser 262-4041 EQUAL OPPORTUNITY EMPLOYER

SPORTS WRITER
Immediate opening for a talented writer with solid knowledge of local sports at the high school & community level. Must have experience in newswriting & layout. Call Bill at: 235-5881

62 Domestic Help Wanted
COMPANION Aide, F/T & P/T positions for elderly lady. Mililani 623-4246.

64 Domestic Help Wanted
CAREING, loving mom will baby sit in my Mililani home, 6am to 6pm. M-F. Call 625-4585.

64 Domestic Help Wanted
MOTHER want a relief? Will care for 1 child once a wk, your hm, or mine. Mon. to Fri. 263-2254.

64 Domestic Help Wanted
RESPONSIBLE & loving mom will babysit in my Waimanalo home Mon-Sat. 6am-6pm 259-8966

ALOHA HEALTH CARE CENTER
KANEHOE'S NEW 120 BED NURSING CENTER
Now accepting applications for: RN's, LPN's, NA's
ATTRACTIVE INCENTIVES AND EXCELLENT BENEFITS
Apply in person at business office, 8am-5pm:
Alloha Health Care Center
45-545 KAM HWY, KANEHOE, HAWAII 96744
AN EEOC EMPLOYER

TACO BELL
CATCH THE SPIRIT!
HAWAII KAI TACO BELL OPENING SOON
You'll find some bright enthusiastic people on the Taco Bell crew. People who enjoy making good friends while they make good money.
EARN UP TO \$600/HOUR (starting) and count on benefits like:
• Flexible Hours
• Free Meals
• Full Training
NO EXPERIENCE NECESSARY
Catch the spirit at Taco Bell.
Apply at
HAWAII KAI TACO BELL
Koko Marina Shopping Center
An EEO/AA Employer

\$6.50 MORNINGS AND FULL TIME \$5.50 PART TIME
INVENTORY SPECIALISTS NO EXPERIENCE NECESSARY DRIVERS LICENSE AND PHONE REQUIRED APPLY IN PERSON 10AM-6PM

WASHINGTON INVENTORY SERVICE
905 UMI ST. #104 KALIHI 842-7178
765 KAM HWY #104 PEARL CITY 455-6563

Printing Press Trainees
Immediate openings for pressroom workers to assist with the production of newspapers and advertising circulars. Learn a highly skilled job in a profession that pays well if you are willing to work hard and work 12-hour shifts, we'll start you at \$6.00 per hour. Wage increases are likely after the first, third, and sixth month intervals with good performance. Excellent benefits including medical, dental, life insurance and profit sharing. Apply in person at:
Sun Press/MidWeek
45-525 Luluku Road Kaneohe, HI 96744

PROFESSIONALS SERVICES

REPAIR-BUY-SELL-TRADE. Washers, dryers, refrig., air cond. Honest Warranty. Call 239-7479

DRY CLEAN your carpet! No wet mess, no drying time, no sticky residue. Call ARID DRY CARPET CLEANING (host) 395-5217.

DRY CLEAN your carpet! No wet mess, no drying time, no sticky residue. Call ARID DRY CARPET CLEANING (host) 395-5217.

HAULING
RICK'S Hauling svc. Yd. clearing. Construction clean up. Furn... You name it we'll haul it. 262-2181

LANDSCAPING
DISTINCT yard, rock, sprinklers Call 263-7777.

MASONRY
ALL phases masonry, brick, stone concrete work. No job too big. Free est., 15 yrs. exp. Dave 263-2136. To \$100.

REPAIR
MEL'S Painting & repairs interior & exterior, dry wall, some carpentry, quality work, free est. up to \$100. Ph. 695-5010.

YARD SERVICE
LAWN & Garden reasonable & reliable. Experienced. 623-0830.

REPAIR-BUY-SELL-TRADE. Washers, dryers, refrig., air cond. Honest Warranty. Call 239-7479

HOUSEKEEPING
Dan's Housekeeping Personnel Service

ELECTRICAL
CEILING Fan Installation, Free estimate. Call 395-0395, # C6052.

PAINTING
ISLAND Budget Painting & mildew wash. Call for \$100. Ins./Refs. Summer Savings. 239-5058

PLUMBING
KANEHOE Plumbing, Repairs & remodeling. Lic. C9153. 239-9262. Free Est.

REMODELING
CARPENTRY frame to finish, moss rock, masonry, fences, all renovations, large or small. Up to \$100. Call for free est. 235-1714.

SEWING & ALTERATIONS
PROFESSIONAL sewing/alter, for all occasions. Free p/u & del. 239-5601.

PART TIME JOB IN KANEHOE BUSINESS DELIVERY REP. Thursday only
Must be dependable, have own vehicle. Salary, bonus and gas allowance.
Call Circulation Office
247-8755 ex. 354

Family Motors

Special Financing! E3, E4 & Above!

\$99* DELIVERS, OAC

'84 PLYMOUTH TURISMO 2 Dr. B72447	\$2195	'83 CHEVY CAVALIER 4 Dr., A/C C8000
'84 TOYOTA TERCEL 2 Dr. B7227	\$2395	'84 NISSAN SENTRA 2 Dr. 601579
'83 CHRYSLER LeBARON Conv., A/C, P/S, P/W, T/W A8000	\$2695	'84 PONTIAC 6000 4 Dr., A/C, P/S CBJ151
'82 LINCOLN CONTINENTAL Loaded B77490	\$3495	'83 CHEVY Z-28 Sunroof, Auto, P/S, Cass. C83338
'84 HONDA CRX A/C, Cass., P/S, Nice B77248	\$4195	'85 PONTIAC FIERO Auto, P/W, A/C, Sunroof, P/S, T/W C80000
'88 DODGE COLT S/W A/C, Cass., P/W	\$4395	'88 FORD ESCORT 2 Dr. CVA800

SPECIAL MILITARY FINANCING
NEW IN HAWAII!
FAIR CREDIT - NO CREDIT - SO-SO CREDIT?
WE ARE EXPERTS IN FINANCE
INCLUDING BANKRUPTCIES!
Sale Good Now Till Sept. 13, 1990

In House Financing • Instant Delivery
*Plus Tax & Lic. Subject to Prior Sale • Call for Directions
Open 7 Days a week 9 a.m. - 6 p.m. Sundays 11 a.m. - 4 p.m.
94-267 Farrington Hwy. at Leokane
Waipahu, HI 96701 Ph: 676-1600

USED 1990 TOYOTA COROLLA 4 DR. SEDANS

NOW \$9995

ONLY 15 TO CHOOSE FROM LOW MILEAGE!

\$900 down payment
\$220¹¹/ mo. 60 mo. 13.5% APR

Payment includes sale price plus tax & license transfer fees, \$55.
Subject to prior sale. Sale ends Sept. 13, 1990.

KAIMUKI TOYOTA

735-1737

A DIVISION OF SERVCO PACIFIC
Corner of 6th Ave. & Wai'alae

Good to Savings

'86 HONDA CIVIC Lic. # CEE-426 5 spd, A/C, Great Economical Car \$5195	'82 DODGE CHALLENGER Lic. # ATD-515 5 spd, This is a Black Beauty \$1995	'89 NISSAN SENTRA 4 dr, Auto, Air, P/S 2 to choose from Priced to sell \$6995
'83 BUICK REGAL Lic. # AMY-283 4 dr., V/6, Auto, Air, P/S, Cass, Tilt Wheel, Great Family Car \$2995	'86 HONDA CIVIC Lic. # CCV-047 4 dr., Auto, Air, P/S, Very Clean and Low Miles \$5995	
'85 MAZDA 626LX Lic. # Baf-307 4 dr, All the options: AIR, AUTO, P/Windows, Custom Wheels Priced to sell \$4995	'87 BUICK SKYHAWK Lic. # CGW-099 4 dr, Equipped with Air & other accessories Beat the summer heat \$5295	
'84 NISSAN WAGON Lic. # BWC-375 Perfect car for family errands around the neighborhood \$2695	'82 MAZDA RX7 Lic. # ATG-177 Sporty Little Sports Car PRICED TO GO \$3295	
'85 OLDS CUTLASS CIERA Lic. # CAW-602 This car is loaded with all the extras \$5295	'87 MAZDA B2200 PICK UP Lic. # CPW-810 Good truck for doing chores around the house this Labor Day weekend. \$5195	
'84 OLDS CUTLASS CIERA WGN. Lic. # CWX-007 Auto, Air, P/S, Lug Rack. This won't last the weekend \$4995		

SCORE \$200 OFF ANY CAR ABOVE
When you show us this Ad.

809 S. King St.,
531-9922

PACIFIC OLDSMOBILE & GMC

RAINBOW CHEVROLET COURTESY PONTIAC 630 PIKIOI ST. HONOLULU 522-5400

NOTICE:
Rainbow Chevrolet Wishes To Salute And Reward All Active Military Members Stationed in Hawaii - We Will Pay You Cash To Own Our Car! See Coupon Below For Details.

COUPON \$200 ADDITIONAL BONUS FOR MILITARY

Valid (1) per customer.
Sale good Sept. 13, 1990
Clip & Present Coupon After deal is completed and get \$200 cash.
Military ID required for use of coupon.
This coupon is only valid on one purchase.

'90 Z-24 COUPE

Brand New, V-6, Auto, A/C, P/S, P/B, P/Locks, Tilt Steer, Cruise, Int Wipers + More

\$12,695*

#0-6959

Classified 235-5656

Auto and Pickup Fleet Sales and Brokerage

NEW CARS & TRUCKS COST LESS

For prices please call or write

Since 1946
Roberts and Redfield

Oregon Dealer #1649 1313 W. Burnside Portland, Oregon 97209
(503) 295-5556

176 Autos For Sale

GOVERNMENT SEIZED Vehicles from \$100. Ford, Mercedes, Corvettes, Chevys, Surplus. Your area. 1-805-687-8000 Ext. S-4031.

Buick '78 SKYHAWK auto., 2 dr., low mi., very good cond. \$675. Ph. 261-8366	Geo '90 METRO 3 dr., red. DGR242. \$695. 261-3321 D.
Cadillac '83 COUPE DE VILLE auto. LOADED!! HGE-354 \$4995 (D). 235-0068	Honda '85 ACCORD, H/back, dependable car \$3300/ ofr. 263-2507 or 263-2507 '85 CRX, blue, 5 spd. alarm, tint \$5200. Call 254-3750. '85 PRELUDE CPE, 5 speed, AM/FM cass. Sun roof, B/YR-292 (D). 235-0068
Chrysler '85 CAVALIER 4 cyl., auto. A/C, low miles \$2500/ ofr. Ph. 293-9347. '87 CAMARO 1-top, auto, P/S, A/C, LIC.#CNR-799. \$9995- 531-9922 (D).	Mercedes '81 MERCEDES, 380-SL, 2 Top, low mileage, excellent drivability. \$25,900. Call 373-4527 or 944-8929.
Datsun '78 T-BIRD good cond. \$3500 or best offer. 262-7554. '70 CADILLAC conv., good mech. cond., new top \$3500/ ofr. 623-1672.	Mercury '76 COUGAR Good engine & tires. Needs trans. \$300. 235-8519, Brian. '82 WAGON, 4 door, standard, good shape \$1500. Ph. 625-5204. '89 COUGAR V-6: Loaded, priced to move. CYT-985 \$11,895. (D) 235-0068
Dodge '72 DART Runs great. Stereo cassette, \$400/ offer. 254-1226.	Mitsubishi '90 GS ECLIPSE, like new, only \$18,000/ offer. Call 487-2848 lv. msg.
Ford '86 MUSTANG \$2500. Call 293-5817. '77 MUSTANG II Auto., Concord stereo, 10" subwoofers \$1100. 488-7837. '79 LTD S/W 351e eng. P/S, P/B, Auto. \$500 833-7165 or 455-4157. '84 ESCORT 2 dr. auto. Very realible, good cond. \$2,000/ offer 238-0943 Leave Mesg.	Oldsmobile '81 DIESEL Station Wagon. \$1500/ offer. Call 293-5817. '87 TOURING SEDAN Beautiful executive car. CNT-297. \$12,995. 531-9922
Pontiac '83 TRANS AM V8, T-Top, AM/FM Cass. \$4000. Call 486-2085. '84 FIERO 2M4 SE, 35,000 mi. \$3500/ offer, Call 293-5817. '85 FIREBIRD auto., A/C, P/S, P/W. CCB354. \$595. 261-3321 D.	Subaru '88 TEMPO GL 4 dr., auto. A/C, P/S, P/L. DBE835. \$995. 261-3321 D.

PACIFIC OLDSMOBILE & GMC

Wahaiwa 621-0020

We are Central Oahu's Used Truck & Car Specialists
Deal directly with the management
Stop by our showroom today and see our car of the month

'83 CHEVY S-10 P/U 8 cyl., Rims, 5 Speed CJK-794	\$2800
'88 TOYOTA P/U 4 Speed, Low Rider, Clean P-948	\$3900
'78 CHEVY EL CAMINO P/Windows, P/Locks, Tilt, Air P-953	\$4800
'82 DATSUN P/U 4x4 Very Clean, AM/FM Cass B8X-759	\$5700
'84 FORD RANGER 4x4 Auto, Air, Custom Wheels P-95094	\$5900
'86 CHEVY EL CAMINO Air, Stereo, Tilt, Calif. Car P-1003	\$6800
'87 CHEVY 3/4 TON Auto, Air, Calif. Truck P-1030	\$10,000
'86 CHEVY P/U STEPSIDE SILVERADO Auto, Air, Loaded P-1010	\$10,000
'85 CHEVY 1 TON DUALY SILVERADO Loaded, Very Clean P-1020	\$10,500
'84 FORD 3/4 TON 4x4 Raised, Air, AM/FM Cass., Custom Wheels CRR-809	\$10,700

Truck & Car
961 Center St. Wahaiwa

'90 GEO METRO XFI

BEST THE GAS CRUNCH - GET UP TO 58 MPG. WORLDS HIGHEST MILER

Geo #0-7033 **\$5895***

'90 GEO STORM

2+2 Coupe, P/B, 5 Spd, A/C, Floor Mats + More

CHEVROLET #0-6147 **\$9995***

'90 CHEVY S-10 P/U

4.3, 5 Speed, A/C, Cass w/ Eq. 215 Tires, tilt, Sport Sus., Int. Wipers & Lots More

CHEVROLET #06989 **\$10,895***

'90 454 SS P/U

Bucket Seats, 454 Auto, Locking Diff., 275/60 15 Tires, Locks, 373 Axle, Windows, A/C, Tilt + Lots More

#0-6537 **\$17,995***

LOW DOWN

\$500 Down or Less for any Car*

Easy Military Financing*

Free Tank of Gas with Purchase!

Choose From Over 100 Cars!

'79 BUICK REGAL Auto, Air, Stereo Lic #ACC-023 MAKE OFFER!*	'79 FORD MUSTANG Auto, Air, Cherry Lic #CRA-510 MAKE OFFER!*	'81 OLDS CUTLASS SUPREME Air, Low miles, Clean Lic #CXV-100 MAKE OFFER!*
'84 FORD T-BIRD Auto, Air, V-8, 49,000 Miles Lic #BUA-346 MAKE OFFER!*	'84 MAZDA RX7 GSL Air, Sunroof Lic #BUU-272 MAKE OFFER!*	'85 CHEVY SILVERADO Auto, Air, Loaded Lic #DJB-381 MAKE OFFER!*
'86 NISSAN SENTRA S/W Auto, Air, Top Shape Lic #MKR-019 MAKE OFFER!*	'88 FORD EXP Air, Perfect Condition Lic #DBR-085 MAKE OFFER!*	'88 PONTIAC GRAND PRIX Air, 16,000 Miles Lic #CWE-120 MAKE OFFER!*

*Prices plus tax, license & \$195 doc fee. Offer on approved credit. Vehicles subject to prior sale.

KAILUA TOYOTA

Classic Cars
'86 T-BIRD good cond. \$3500 or best offer. 262-7554.
'70 CADILLAC conv., good mech. cond., new top \$3500/ ofr. 623-1672.

Datsun
'77 280Z runs great, good cond. \$1500/ offer. 623-2269.

Dodge
'72 DART Runs great. Stereo cassette, \$400/ offer. 254-1226.

Ford
'86 MUSTANG \$2500. Call 293-5817.
'77 MUSTANG II Auto., Concord stereo, 10" subwoofers \$1100. 488-7837.
'79 LTD S/W 351e eng. P/S, P/B, Auto. \$500 833-7165 or 455-4157.
'84 ESCORT 2 dr. auto. Very realible, good cond. \$2,000/ offer 238-0943 Leave Mesg.

Pontiac
'83 TRANS AM V8, T-Top, AM/FM Cass. \$4000. Call 486-2085.
'84 FIERO 2M4 SE, 35,000 mi. \$3500/ offer, Call 293-5817.
'85 FIREBIRD auto., A/C, P/S, P/W. CCB354. \$595. 261-3321 D.

Subaru
'88 TEMPO GL 4 dr., auto. A/C, P/S, P/L. DBE835. \$995. 261-3321 D.

PACIFIC OLDSMOBILE & GMC

Toyota

'78 CELICA, 5 spd., good engine, body needs work \$750. Ph. 254-4248.
'78 TOYOTA Corolla, runs great \$1500 or offer. Call 254-3489.
'82 CELICA GT Auto., A/C. AWT834. \$4995. 261-3321 D.
'82 CORONA, St. Wagon, auto., A/C. ATY726. \$1295 261-3321 D.
'89 CAMRY 4 dr., auto, P/S, AM/FM, A/C, warranty. HLL-863 \$10,396 (D). 235-0068
'89 COROLLA wgn. auto, P/S, AM/FM, A/C, Warranty. HLE960 \$7995. (D) 235-0068

KAILUA TOYOTA

'82 COROLLA, 4 dr. auto., A/C, P/S, AM/FM, MPS849, \$7995. 261-3321 D.
'89 COROLLA 4 dr. auto, P/S, AM/FM, A/C, Warranty. Low mi. MGC-762 \$10,495. (D) 235-0068
'90 COROLLA 4dr. Auto, A/C, P/S, AM/FM, DDS-054, \$9995. 261-3321 D.

KAILUA TOYOTA

'88 BUG, new, paint, mag rims, good body, new tires, eng. needs little work \$375. 247-3570

CAR PAYMENT RELIEF!

Is your Loan pay-off greater than the value of your car? Unable to Sell or Trade

AVOID REPOSSESSION SAVE YOUR CREDIT!

Financial Firm can take-over Auto Loans & Leases

CREDIT LINE SERVICES 521-5944

CLASSIFIED 235-5656

PFLUEGER LINCOLN-MERCURY

AIRPORT: 3179 N. NIMITZ HWY. • PHONE: 836-2082

KAILUA TOYOTA

'88 TEMPO GL 4 dr., auto. A/C, P/S, P/L. DBE835. \$995. 261-3321 D.

'83 4 DR. Automatic. BTF900. \$959. 261-3321 D.

PACIFIC OLDSMOBILE & GMC

KAILUA TOYOTA

'88 BUG, new, paint, mag rims, good body, new tires, eng. needs little work \$375. 247-3570

STORE HOURS

MON-SAT. 8:30 a.m. - 9:00 p.m.
SUNDAY 9:00 a.m. - 6:00 p.m.

CUTTER TEAM

HAWAII'S DRIVING FORCE

BANK FINANCING AVAILABLE
ALL STORES OPEN
8:30 A.M.-9 P.M.
SUN. 9 A.M.-6 P.M.

★SPECIAL MILITARY FINANCING
WITH FORD CREDIT, CHRYSLER CREDIT AND GMAC
★TAKE IT WITH YOU WHEN YOU LEAVE ★NO HASSLES—NO RED TAPE

CUTTER FORD-ISUZU
98-015 Kamehameha Hwy.
AIEA
487-3811

FACTORY AUTHORIZED FORD CLEARANCE

FROM **4.8% APR** FINANCING OR GET UP TO **\$1500** CASH FOR BUYING AMERICA'S BEST SELLING CARS & TRUCKS

THE MONTH'S BEST BUYS

'90 AEROSTAR WGN.
IN A CLASS BY ITSELF
7 Pass, Auto, A/C #2298 **\$12,995**

1990 Ranger Pick-Up
#1 Selling Truck In It's Class #2251 **\$6895**

1990 SUPER SPECIALS

- Escort Wagon** #1679 Auto, Air, AM/FM, Two Tone **\$8895**
- Tempo GL** #2586 4 dr. AM/FM Air, Tilt **\$8895**
- Mustang LX** #1562 Air, Cass, P/W, Lots More **\$9495**
- F150 Pick-Up** #2624 Super Buy! Tilt, AM/FM, Bumpers & More **\$10,995**
- Impulse** #1287 Air, Loaded! Cass., Alloy Wheels **\$11,995**
- Taurus 4 Dr.** #2429 3.0 V-6, Auto, Air **\$12,495**
- T-Bird** #1946 Auto, Air, All Power **\$13,995**

AT CUTTER FORD/ISUZU IN AIEA WHERE YOU MAKE THE DEALS

TRANSPORTATION SPECIALS

'85 DODGE COLT Auto, Radio, Clean Car #10085 \$1895	'86 FORD TAURUS LX S/W 4 Cyl. A/C, Auto, P/S, P/W, Low Mi. CF#886 \$6995
'85 CHEVY CAMARO Auto, P/S, AM/FM Cass, New Paint CWF#98 \$3495	'87 CROWN VICTORIA LX 3.7W, V-8, A/C, Auto, P/W, P/L, CLE#28 \$7695
'84 IMPULSE A/C, Auto, P/S, New Paint DFR#81 \$3795	'88 OLDS CIERRA 4 DR. Auto, P/W, AM/FM Cass, A/C CVT#46 \$7995
'85 FORD RANGER P/U 4 Sp, Radio, New Paint CV#853 \$4295	'88 TOYOTA CAMRY DLX 5 Sp, A/C, Radio, Clean CY#309 \$8395
'89 FORD FESTIVA A/C, 5 Sp., Only 1000 MI. MR#202 \$4695	'86 BLAZER S-10 4x4 6 Cyl., 5 Sp., Cass Cruise, Sunroof, CDA#119 \$8695
'89 MITSUBISHI PRECIS LS 4 Cyl., Auto, A/C MFS#208 \$4795	'86 CHEVY K-10 4x4 P/U V-8, Auto, A/C, Only 35,000 MI. CDU#743 \$9995
'86 FORD TAURUS GL 6 Cyl., A/C, Auto, P/S, ML#422 \$5395	'86 LEGEND 4 Dr., A/C, Auto, Sun- roof, P/W CF#480 \$10,495
'86 FORD TAURUS GL 4 Dr., 6 Cyl., A/C, AM/FM Only 31,000 MI. CF#816 \$5895	'88 CHEVY Z-28 IROC V-8, A/C, Auto, P/W, Tilt, Low Mi. CWC#82 \$10,895
'88 EAGLE MEDALLION DL Wagon, A/C, Auto, P/S, Only 18,000 MI. CWS#16 \$6295	'86 BRONCO 4x4 FULL SIZE P/L, Tilt CFT#67 \$11,295

Prices include all factory rebates. Plus tax, lic. & \$129 doc fees. Sale ends Sept. 6, 1990.

CUTTER CHRYSLER-PLYMOUTH DODGE JEEP/EAGLE
735 Dillingham Blvd.
HONOLULU
842-6300

WHAT A DEAL!



NEW 1990 Plymouth Colt
4 Cyl., Front Wheel Drive, Independent Suspension
#15444 **\$5995**



NEW 1990 Eagle Summit
4 Cyl., 5 Speed Trans., Clear Coat Paint, Cloth Bucket Seats, Radial Tires
#97008 **\$7995**



NEW 1990 Plymouth Sundance
4 Cyl., Air Cond., AM/FM Cassette, T-Glass, Cloth Seats
#15380 **\$9595**



NEW 1990 Chrysler LeBaron Cpe.
Auto, Air Cond., Overhead Console, Aluminum Wheels, P/Steering, P/Brakes
#15061 **\$12,995**



NEW 1990 Jeep Cherokee
Floor Carpet, Dual Mirrors, Air Cond.
#97078 **\$13,995**

Prices include any & all applicable rebates. Not combinable with special finance rates. Subject to prior sale. Plus tax, lic. & \$129 doc. fees. Sale ends Sept. 13, 1990.

CUTTER DODGE
2 GIANT LOCATIONS!
921 Kamehameha Hwy.
455-1071
735 Dillingham Blvd.
842-6300

WHAT A DEAL!
SAVE SAVE SAVE

NEW CAR DEALS:

- NEW COLT**
Now **\$5985**
Was \$8351 Save \$2366 #10924
- NEW CARAVAN**
Now **\$12,995**
Was \$15,510 Save \$2515 #11005
- NEW DAKOTA P/U**
Now **\$7660**
Was \$11,540 Save \$3880 #11010
- NEW SHADOW**
Now **\$9915**
Was \$12,542 Save \$2627 #11085
- NEW SPIRIT**
Now **\$11,562**
Was \$14,593 Save \$3031 #11085
- NEW DYNASTY**
Now **\$12,765**
Was \$17,574 Save \$4809 #10364
- NEW LANGER**
Now **\$12,997**
Was \$16,190 Save \$3192 #90306
- NEW MONACO LE**
Now **\$13,512**
Was \$13,512 Save \$7283 #1067 Demo

AS LOW AS **0.00% FINANCING** on selected models

OR UP TO **\$2000 REBATE**

USED CARS SPECIAL

'79 HONDA PRELUDE (parts only) #6091 BCV387 **\$395**

'82 SUBARU GL #6043 \$395	'84 FORD T-BIRD #5823 \$3995
'79 MERCURY ZEPHYR #6057 \$595	'89 PRECIS LS #5787 \$4995
'77 DODGE COLT WAGON #6052 ACF#60 \$995	'89 DODGE DMFI #6057 DBC#74 \$4995
'85 FORD TEMPO #6058 CA#519 \$2595	'87 CHEVY CAVALIER CR#136 \$5195
'85 PLYMOUTH CARAVELLE CAR#761 \$2895	'86 PLYMOUTH VOYAGER #6054 MKN#05 \$7495

Prices include any & all applicable rebates. Not combinable with special finance rates. Subject to prior sale. Plus tax, lic. & \$129 doc. fees. Sale ends Sept. 13, 1990.

CUTTER MITSUBISHI
94-149 Farrington Hwy.
WAIPAHU
671-2626
Across from Gem

#1 MITSUBISHI DEALER
ENTIRE STATE OF HAWAII
INVENTIVE INCENTIVE SALE

NEW MITSUBISHI '90 HATCHBACK
Fully Factory Equipped M2827 **\$5988**
ECONOMY

NEW MITSUBISHI '90 MONTERO LS SPORT 4x4
Loaded, Power Sunroof, Big 4x4 Wheels & Tires M3058 **\$5000**
Under MSRP

SPECIAL PURCHASE
WHY PAY NEW CAR PRICES, WHEN YOU CAN OWN A
'89 MITSUBISHI 4 DR. LS
Air cond. • auto trans. • p/steer. • much more.

NOT ONE BUT **23** **\$5288**
AT THIS LOW, LOW PRICE!! CHOOSE A COLOR!

C-R-E-D-I-T
671-2626

'79 HONDA CIVIC S/W Factory Equipped AXP#734 \$488	'83 BUICK CENTURY Auto • P/S • More AWB133 \$1288
'85 NISSAN SENTRA Auto BXY#254 \$2488	'82 FORD THUNDERBIRD Loaded CDF#62 \$2588
'84 CHEVY CELEBRITY Auto • A/C • More BTU#47 \$2988	'76 VW PASS. VAN Sharp BDP#540 \$2988
'85 FORD CR. VICTORIA S/W 9 Pass., • A/C • More MTR#494 \$3588	'82 TOYOTA CELICA GT Auto • A/C • P/S • Cass Eq. • Wheels AUN#45 \$3988
'82 LINCOLN CONTINENTAL Loaded • Leather DBU#83 \$3988	'79 CHEVY K-5 BLAZER Big Wheels & Tires, P/S & More MTR#494 \$3988
'83 HONDA ACCORD Auto, A/C, P/S, Clean AWP#152 \$3988	'88 FORD TEMPO Auto • A/C CDY#083 \$5988
'89 DODGE COLT S/W Auto • A/C • P/S • More DEU#65 \$6588	'86 FIREBIRD TRANS/AM Auto • A/C • V-8 • P/W • More CDG#386 \$6988
'87 JEEP 4 WHEEL DRIVE V-8 • Big Tires • More HKA#555 \$6988	'90 FORD MUSTANG LX A/C • Tilt • Cruise • D/L Loaded DFC#714 \$8988

All prices & discounts include any and all applicable rebates. Cars subject to prior sale. Prices plus tax, lic. & \$129 doc. fees. Sale ends 9/13/90.